

RIN32M3 Module (RY9012A0)

 R30AN0378ED0101
 Rev.1.01
 2021.6.25

Software PLC Guide: CODESYS for EtherNet/IP

Introduction

This application note explains the procedure for running evaluation R-IN32M3 module Solution Kit in connection with the CODESYS software programmable logic controller (PLC). In particular, this covers how to add and configure the protocol stack EtherNet/IP supported by CODESYS.

Target Device

R-IN32M3 module

Related document

Document Type	Document Title	Document No.
Data Sheet	R-IN32M3 Module Datasheet	R19DS0109ED****
User's Manual	R-IN32M3 Module User's Manual: Hardware	R19UH0122ED****
User's Manual	R-IN32M3 Module User's Manual: Software	R17US0002ED****
Quick Start Guide	R-IN32M3 Module Application Note: Quick Start Guide	R12QS0042ED****
Application Note	R-IN32M3 Module (RY9012A0) User's Implementation Guide	R30AN0386EJ****
User's Manual	Adaptor Board with R-IN32M3 module YCONNECT-IT-I-RJ4501	R12UZ0094EJ****
Quick Start Guide	Evaluation Kit for RA6M3 Microcontroller Group EK-RA6M3 Quick Start Guide	R20QS0011EU***
Application Note	R-IN32M3 Module (RY9012A0) Application Note RA6M3/RA6M4	R30AN0388EJ****
Application Note	R-IN32M3 Module (RY9012A0) Application Note RX66T	R12AN0111EJ****
Application Note	Software PLC Connection Guide CODESYS for PROFINET	R30AN0377ED****
Application Note	Software PLC Connection Guide CODESYS for EtherCAT	R30AN0379ED****
Application Note	Software PLC Connection Guide TwinCAT	R30AN0380ED****

Table of Contents

1. Overview.....	3
1.1 Abstract	3
1.2 Operating environment.....	3
1.2.1 Software environment	3
1.2.2 Hardware environment.....	4
2. CODESYS Setup.....	5
2.1 Setup EtherNet/IP project.....	5
2.1.1 Creating a project.....	5
2.1.2 Install Device Information (EDS).....	6
2.1.3 Add Scanner and Adapter Device.....	8
3. Configuring CODESYS Network	11
3.1 Connecting HOST PC IP address.....	11
3.2 Connecting to the Software PLC.....	12
3.2.1 Starting the Gateway Server	12
3.2.2 Starting the Software PLC.....	12
3.3 Configuring Network.....	13
3.3.1 Device registration.....	13
3.3.2 Configuring the Ethernet Network	14
3.3.3 R-IN32M3 Module setting.....	15
4. CODESYS Network Connection.....	16
4.1 Download the Project	16
4.2 Run Project.....	17
4.3 Creating and Simulating a User Interface	18
4.3.1 General.....	18
Revision History	22

1. Overview

1.1 Abstract

This document describes how to setup R-IN32M3 module with CODESYS for EtherNet/IP.

1.2 Operating environment

For details on the software environment and hardware environment, refer to the application note included in the sample package (r18an0052xx0 ***).

Table 1-1 Application Note

資料名	資料番号
R-IN32M3 Module Application Note RA6M3 / RA6M4	R30AN0388EJ****
R-IN32M3 Module Application Note RX66T	R12AN0111EJ****

The connection procedure described in this manual assumes that the following conditions are met. For the setup method of each evaluation board, refer to the application note corresponding to each sample software included in the sample package.

1.2.1 Software environment

Table 1-2 shows the software operating environment.

Sample software and various documents are included in the sample package.

Table 1-2 Software environment

Name	Link
R-IN32M3module sample package	r18an0052xx0***
CODESYS CODESYS Group	https://www.codesys.com/
Npcap NMAP.ORG	https://nmap.org/npcap/

1.2.2 Hardware environment

This document applies only to the following configurations:

- 1) R-IN32M3 module Adapter board with EK-RA6M3 / EK-RA6M4
- 2) R-IN32M3 module Adapter board with SK-S7G2
- 3) R-IN32M3 module CPU card

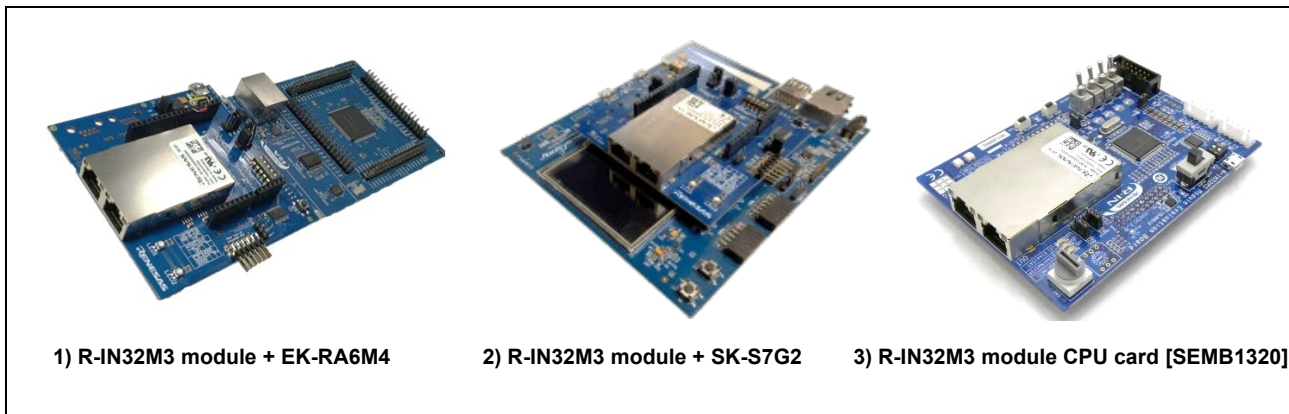


Fig. 1.1 Evaluation environment

Table 1-3 Evaluation environment

Name	Type
R-IN32M3 Module Adapter board	YCONNECT-IT-I-RJ450
R-IN32M3 Module CPU card	SEMB1320
RA6M3 MCU Group Evaluation Board	EK-RA6M3
RA6M4 MCU Group Evaluation Board	EK-RA6M4
SK-S7G2 starter kit.	SK-S7G2

2. CODESYS Setup

2.1 Setup EtherNet/IP project

2.1.1 Creating a project

Select "All Programs > CODESYS > CODESYS V** SP** Patch**" from the Windows start menu.

Select "New Project" from the "File" menu to create a new project.

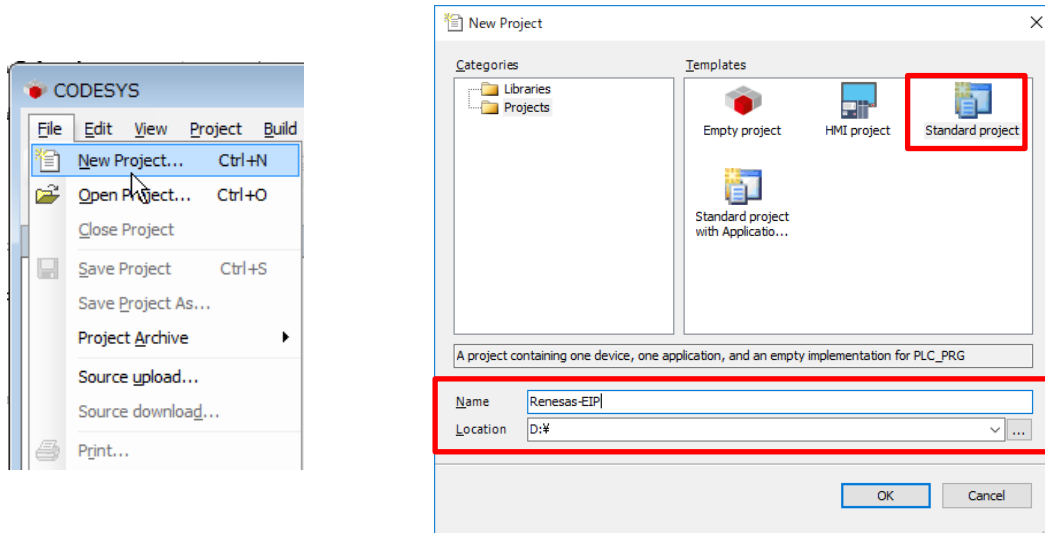


Figure 2.1 new project

In the "New Project" window, select "Projects" from the "Categories" section and "Standard project" from the "Templates" section. Then, specify the name of the project.

In the "Standard Project" window, select the controller and programming language you wish to use from the drop-down lists for "Device" and "PLC_PRG in". For this example, select "CODESYS Control Win V3 x64" and "Structured Text (ST)", respectively. After that, click on "OK" to open the new project.

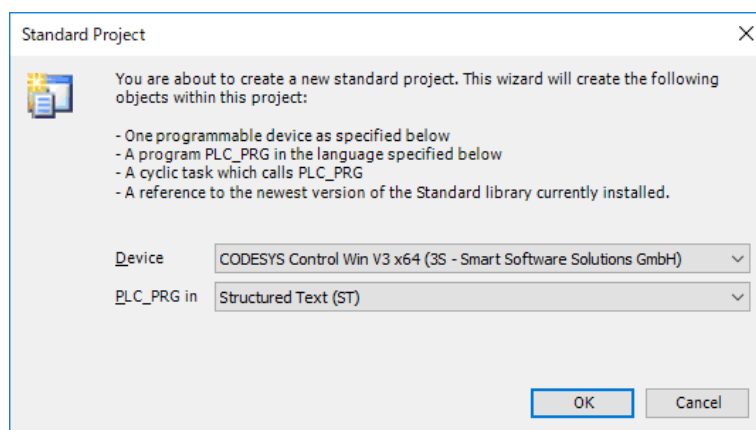


Figure 2.2 Select the Device and PLC programming

The "Device" tree for the newly created project will be displayed as shown below.

The components that belong to "Device (CODESYS Control Win V3 x64)" are managed in a tree structure.

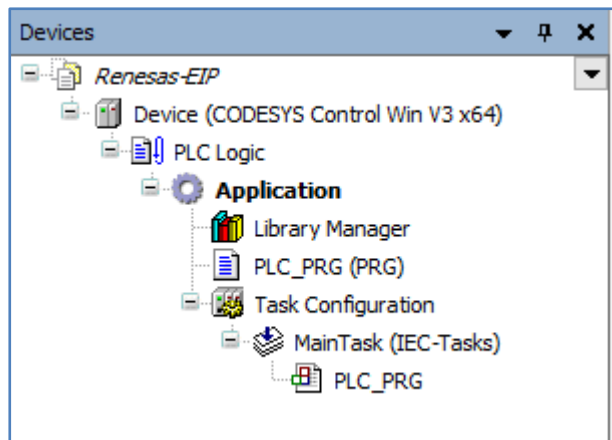


Figure 2.3 Project View

2.1.2 Install Device Information (EDS)

Install an EDS (Electronic Data Sheet) file which contains a description of the EtherNet/IP adapter device.

Select "Device Repository..." from the "Tools" menu of the CODESYS program.

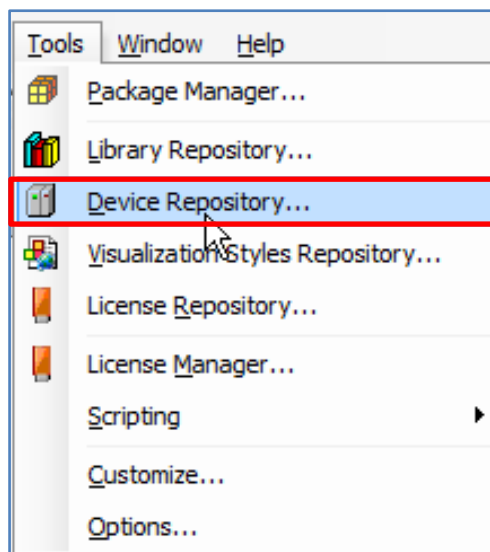


Figure 2.4 Open Device Repository

In the dialog box, click on the "Install" button to produce the dialog box where you are to enter the name of the provided EDS file. The R-IN32M3 module sample package has EDS file for each application (**Table 2-1 EDS file**).

When the installation is complete, [R-IN32M3_Module] will be registered in "EtherNet/IP Remote Adapter" tree.

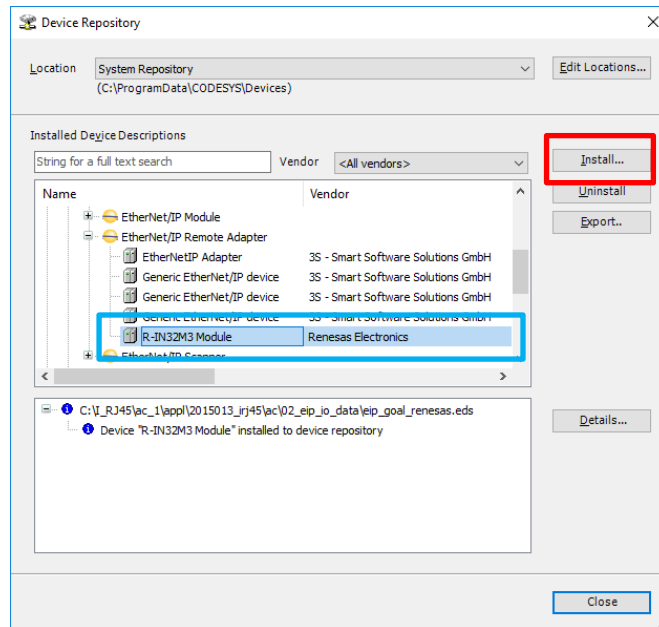


Figure 2.5 Install the EDS File

Table 2-1 EDS file

Sample project	application	directory
RA sample	Mirror	RA6_CCM_V***\appl\mirror_sample\ac\02_eip_io_renesas
	Remote-IO	RA6_CCM_V***\appl\remote_io_sample\ac\02_eip_io_renesas
	Sensor	RA6_CCM_V***\appl\sensor_sample\ac\02_eip_renesas
Synergy sample	Mirror	Synergy_CCM_V***\appl\2015013_irj45\ac\06_eip_io_data_static_ip
RX66T sample	Mirror	RX66T_CCM_V***\appl\mirror_io_sample\02_eip
	Remote-IO	RX66T_CCM_V***\appl\remote_io_sample\02_eip
	Motor	RX66T_CCM_V***\appl\motor_sample\02_eip

2.1.3 Add Scanner and Adapter Device

Add the Scanner device and "R-IN32M3 Module" Adapter device to the project.

1.) Add the Ethernet Interface

Right-click on "Device (CODESYS Control Win V3 x64)" in the "Device" tree and select "Add Device...".

The "Add Device" dialog box opens. Select "Ethernet" under "Fieldbuses", then "Ethernet Adapter" and click on the "Add Device" button.

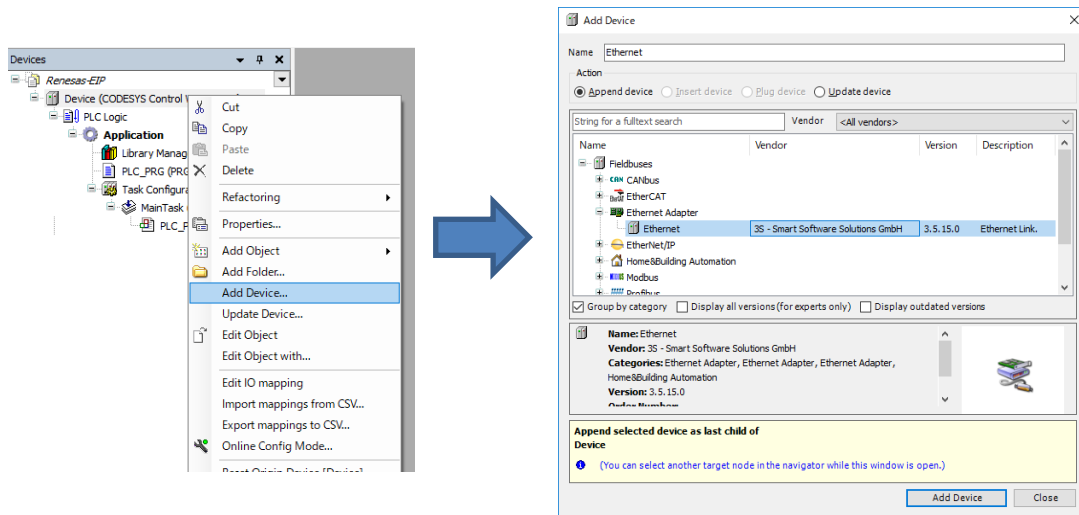


Figure 2.6 Add Device

You can see that "Ethernet" has been added under the "Device" tree.

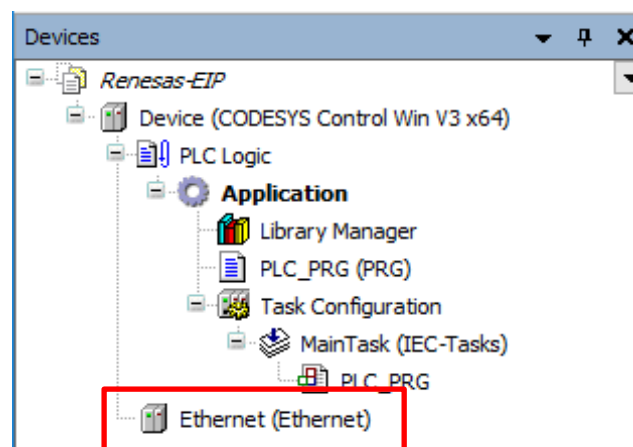


Figure 2.7 Ethernet Interface in Project Tree

2.) Add an EtherNet/IP Scanner

Right-click on "Ethernet (Ethernet)" in the "Device" tree and select "Add Device".

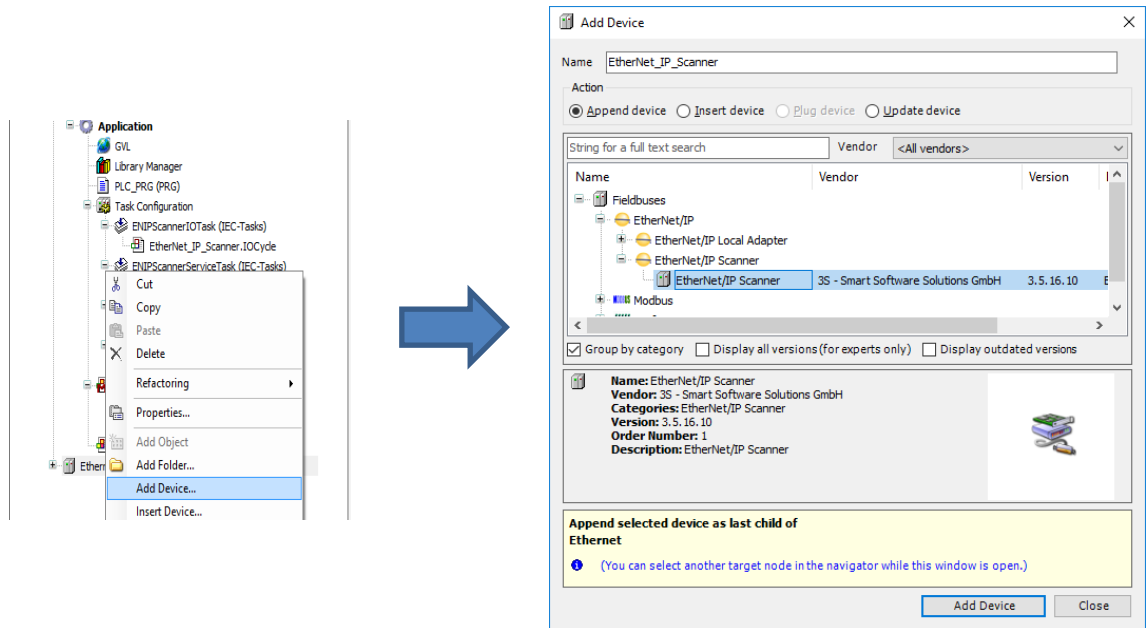


Figure 2.8 Add an EtherNet/IP Scanner

The "Add Device" dialog box opens. Select "EtherNet/IP Scanner" under "Fieldbuses", "EtherNet/IP", then "EtherNet/IP Scanner" and click on the "Add Device" button.

You can see that "EtherNet/IP Scanner" has been added under "Ethernet" Interface in the Project tree.

3.) Add R-IN32 Module Adapter

Right-click on "EtherNet/IP Scanner" in the Project tree and select "Add Device".

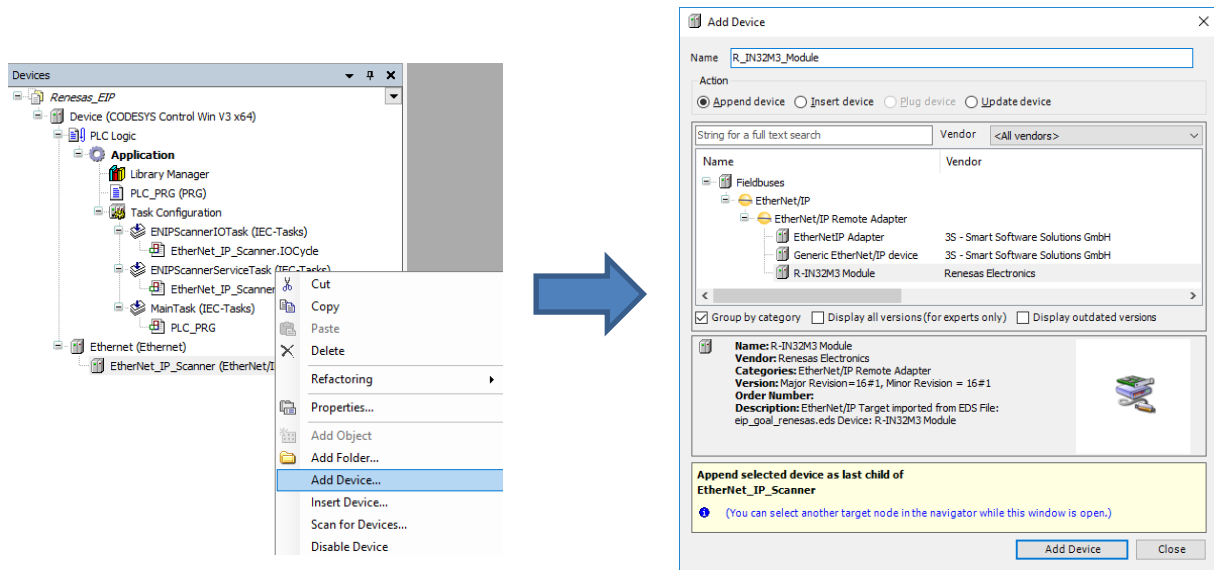


Figure 2.9 Add the R-IN32M3 Module

The "Add Device" dialog box opens. Select "R-IN32M3 Module" under "Fieldbuses", "EtherNet/IP Remote Adapter", click on the "Add Device" button.

You can see that "R-IN32M3 Module" has been added under "EtherNet/IP Scanner" in the Project tree.

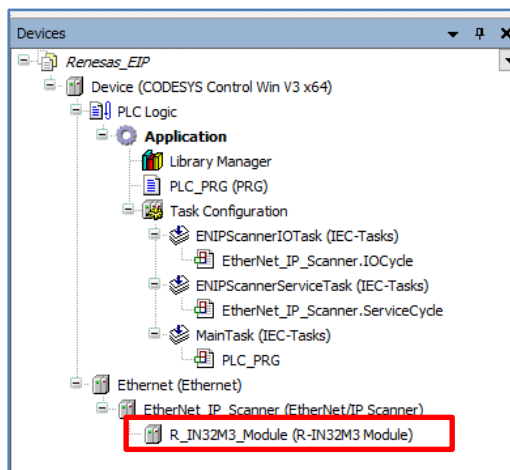


Figure 2.10 R-IN32M3 Module in Project

3. Configuring CODESYS Network

3.1 Connecting HOST PC IP address

IP address setup to the HOST PC.

Open "Network Connection". Double-click or right-click on the "Local Area Connection" icon.

In the "Local Area Connection Status" window, select "Properties".

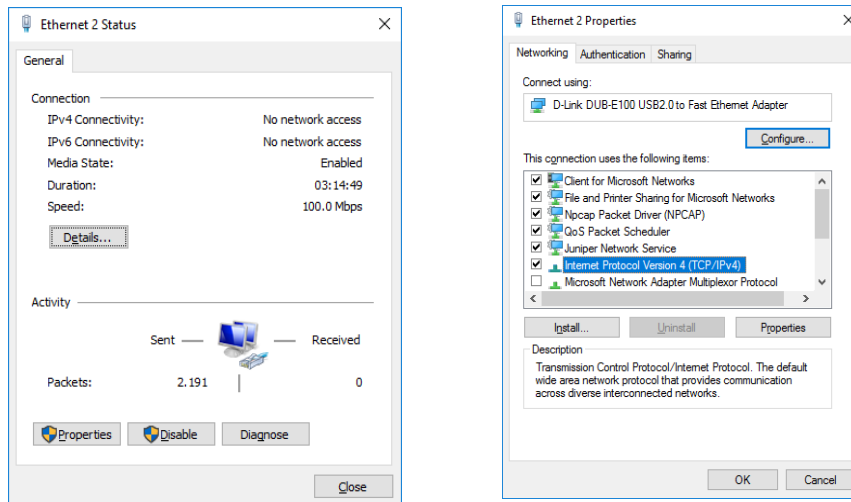


Figure 3.1 Network Status

In the "Local Area Connection Properties" window, highlight "Internet Protocol Version 4 (TCP/IPv4)" then click on the "Properties" button.

Select the radio button "Use the following IP Address" and set IP [192.168.0.1] and subnet mask [255.255.255.0].

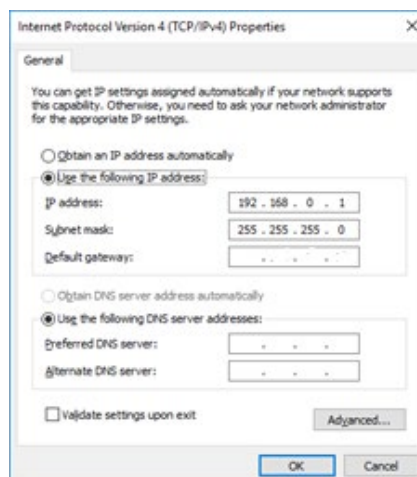


Figure 3.2 IP address setting

Click on "OK" to finish the configuration.

3.2 Connecting to the Software PLC

This section gives the procedure for connection to the target software PLC from the CODESYS development environment via a gateway.

3.2.1 Starting the Gateway Server

Check the state of the gateway server on the system tray. If the server is down, click on the "🔴" icon and select "Start Gateway" to start the server up. Usually, the server will automatically be started as a standard service on booting of Windows and its status is indicated in the system tray^{Note} in the lower-right corner of the desktop.

Note: If you cannot find the icon in the system tray, start the server up by the following procedure:
Click on "All Programs" > CODESYS > CODESYS Gateway V3.



Figure 3.3 Start of Gateway Server

3.2.2 Starting the Software PLC

Check the state of the software PLC on the system tray. If the program is stopped, click on the "🛑" icon and select "Start PLC" to start the program up.

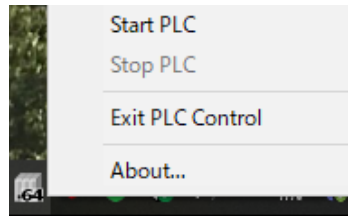


Figure 3.4 Start PLC Controller

Usually, the program will automatically be started as a standard service on booting of Windows and its status is indicated in the system tray^{Note} in the lower-right corner of the desktop.

Note: If you cannot find the icon in the system tray, start the server up by the following procedure:
Click on "All Programs" > CODESYS > CODESYS Control Win V3 x64 SysTray.

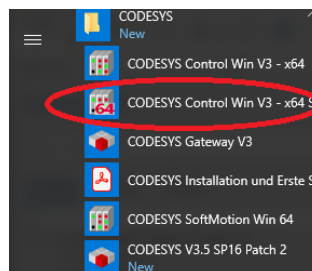


Figure 3.5 Run PLC Controller

3.3 Configuring Network

3.3.1 Device registration

Make connection settings for connecting the software PLC service from your development environment. Double-click on the "Device (CODESYS Control Win V3 x64)" in the "Device" tree. On the "Device" tabbed page, select "Connection settings" and click on the "Scan network..." button.

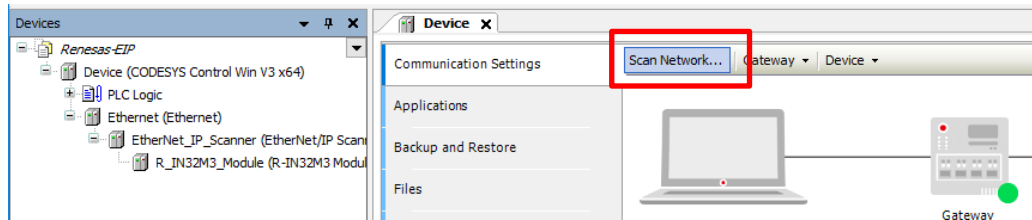


Figure 3.6 Device Scan

The "Select Device" window opens and a search for available devices that can use the local network automatically starts. Finding a software PLC service constitutes success and the name of the corresponding PC will be indicated. Double-click on the PC name to make a connection.

If the service will not be found, check the settings described in previous sections, [3.2 Connecting to the Software PLC](#).

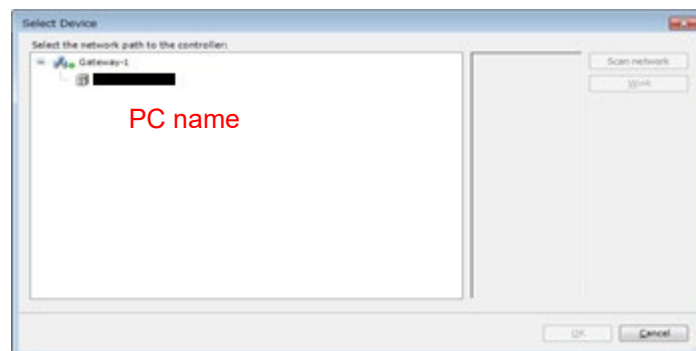


Figure 3.7 Select the PLC

When the available device is registered, the device is activated, and the green circle mark lights up.

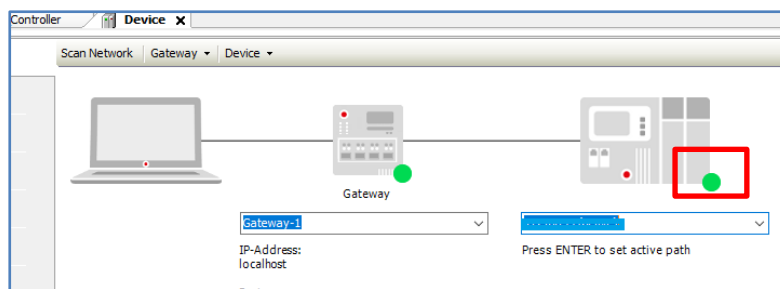


Figure 3.8 registered device

3.3.2 Configuring the Ethernet Network

Double-click on "Ethernet (Ethernet)" in the "Device" tree to open the configuration window. In the "General" tabbed page, click on the icon next to the text box for "Interface" section as shown in the red rectangle below.

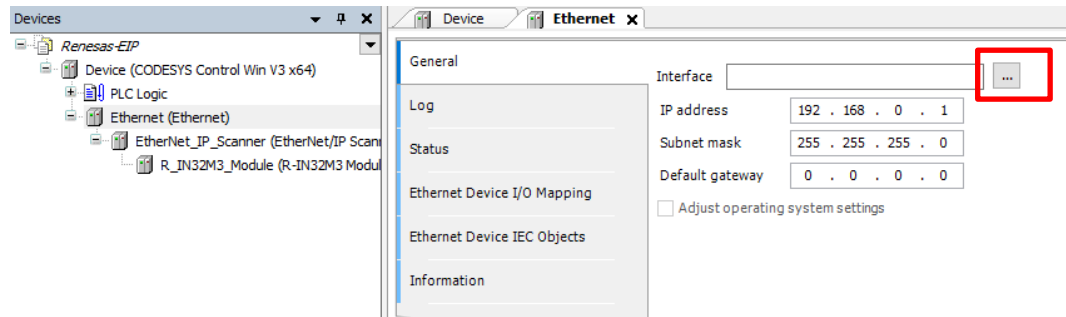


Figure 3.9 Configure the Network Adapter

In the "Network Adapters" window, select the interface set by [3.1 Connecting HOST PC IP address](#).

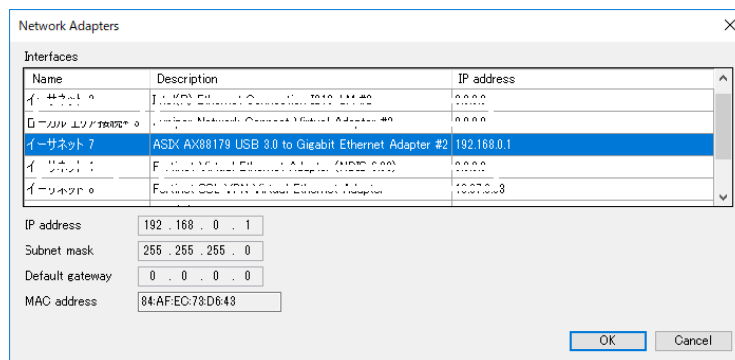


Figure 3.10 Select the Network Adapter

3.3.3 R-IN32M3 Module setting

Double-click on "R_IN32M3_Module (R-IN32M3 Module)" in the "Device" tree to open the configuration window. Then, set the RIN32M3 Module IP address.

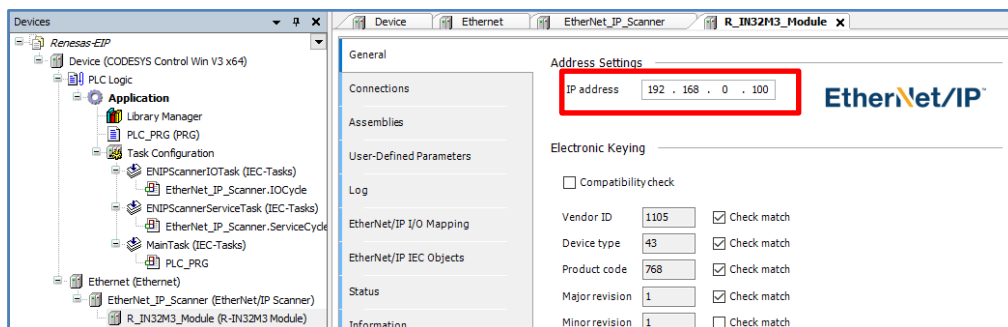



Figure 3.11 R-IN32M3 Module IP Address

4. CODESYS Network Connection

4.1 Download the Project

Now we have finished the offline configuration and can start the online mode.

Click on the button  to build and download the configuration.

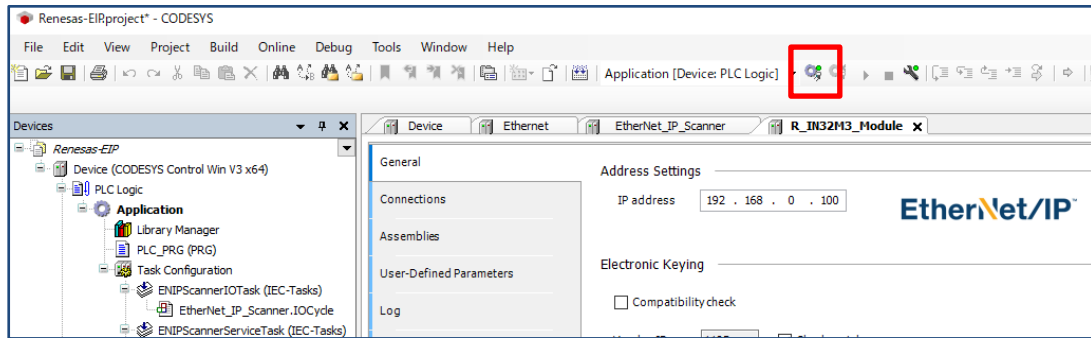


Figure 4.1 Login the project

When you have change something in the project then you will be asked to download it. Acknowledge it with “OK”

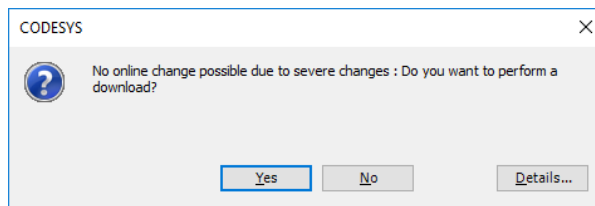


Figure 4.2 Download project

When the download is finished click “Start” to run the project.

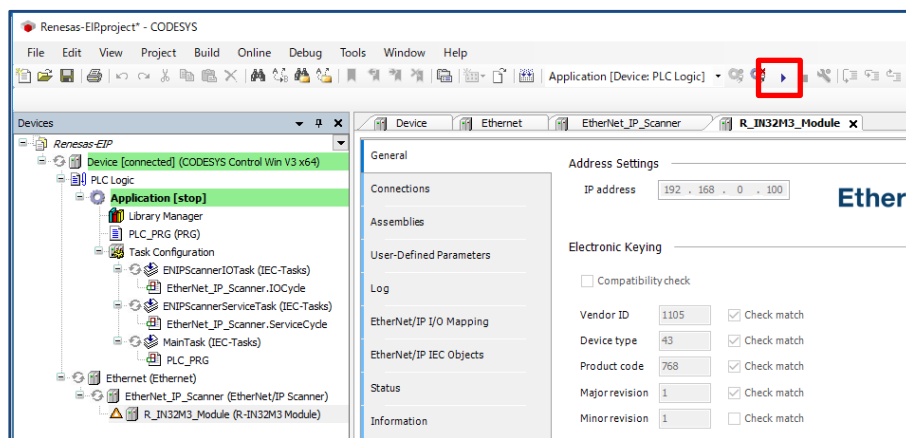


Figure 4.3 Start project

4.2 Run Project

Now, if all the icons in front of the device turn green, the EtherNet/IP connection is successful.

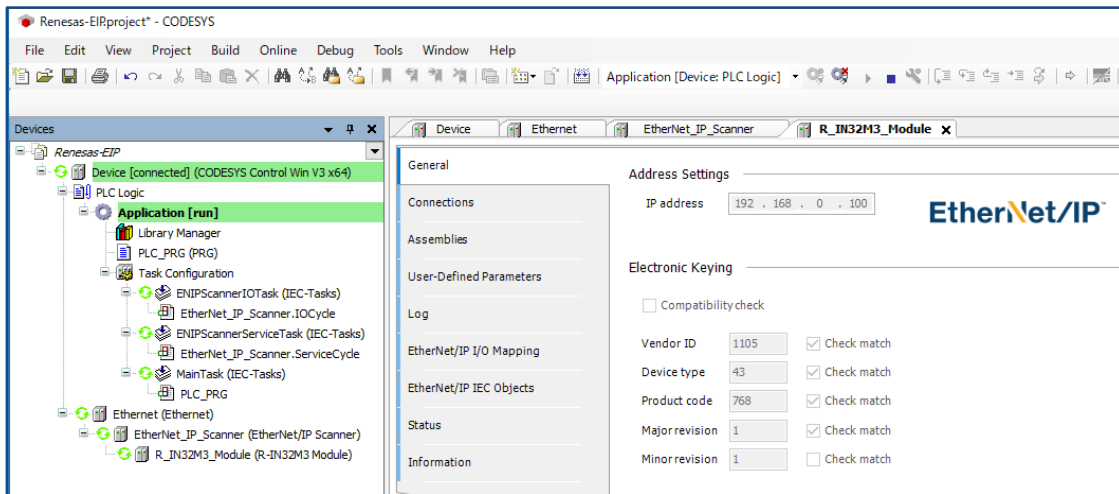






Figure 4.4 successful running project

The icons indicating status of each device is listed below.

-  : The application is connected to the PLC and is running.
-  : The application is connected to the PLC but is not running.
-  : Error. Check the error contents and the settings of the device.
-  : There is no device information in the device repository. Review the device information file and re-install it.

4.3 Creating and Simulating a User Interface

4.3.1 General

This section includes the following procedures:

- Displaying the development environment screen
- Implementation example
- Relating variables to components and to the I/O ports of devices

The CODESYS development environment allows the creation of user interfaces. You can access all internal variables used in the PLC program on the screen as well as monitoring and changing the parameters.

The PLC example in this case uses the "mirror" feature (Mirror sample application) of the R-IN32M3 module application. The INPUT value of the device (Module) will be increased by one and send back to the OUTPUT value of the PLC. The speed of this increase can be controlled by the value MAXI.

4.3.1.1 Adding Components

Components to be placed on a user-interface display need to be added to the "Device" tree before creating one. Right-click on "Application" in the tree and select "Add Object", then "Visualization...".

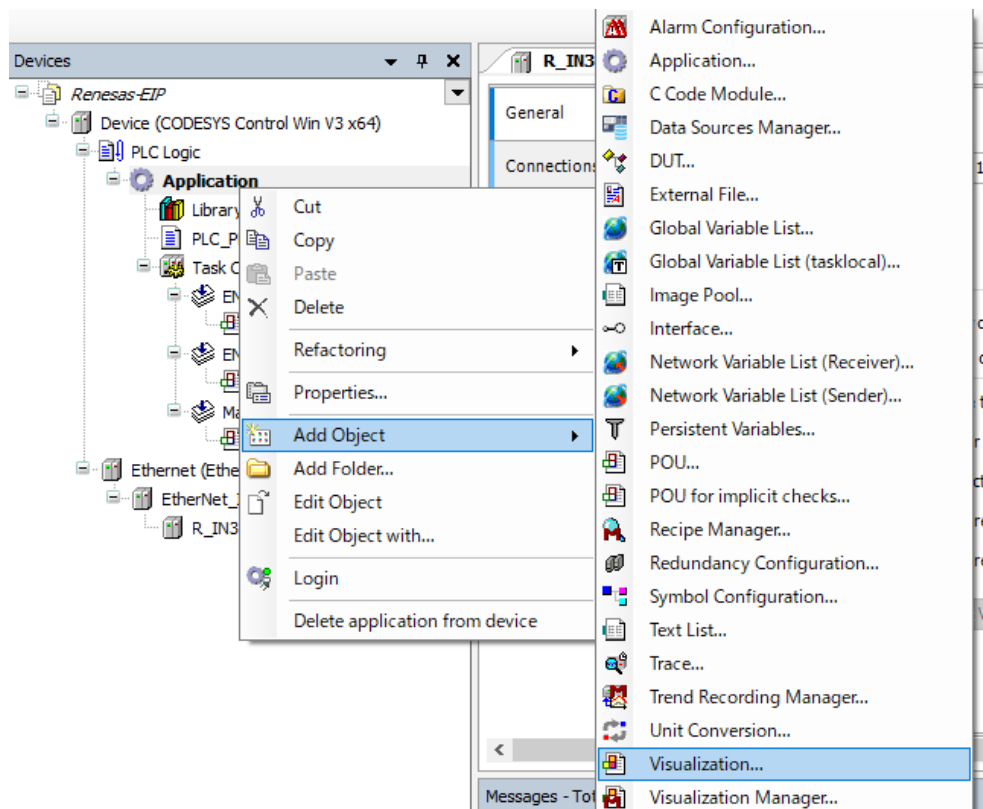


Figure 4.5 Add of Visualization object in Project tree

4.3.1.2 Development Pane

Double-clicking on "Visualization" in the tree displays the development pane.

Development pane

The main pane for structuring user-interface displays.

Place the components you will be using here.

Toolbox

The toolbox provides basic components for placements in the development pane. As well as such as graphs, tables, and labels, meters, switches, progress bars, and other items are available.

Users can select the desired components from this box and place them in the development pane.

Properties

Parameters for the components placed on the development pane are monitored and changed from here. The internal variables of the PLC program are also handled within this pane.

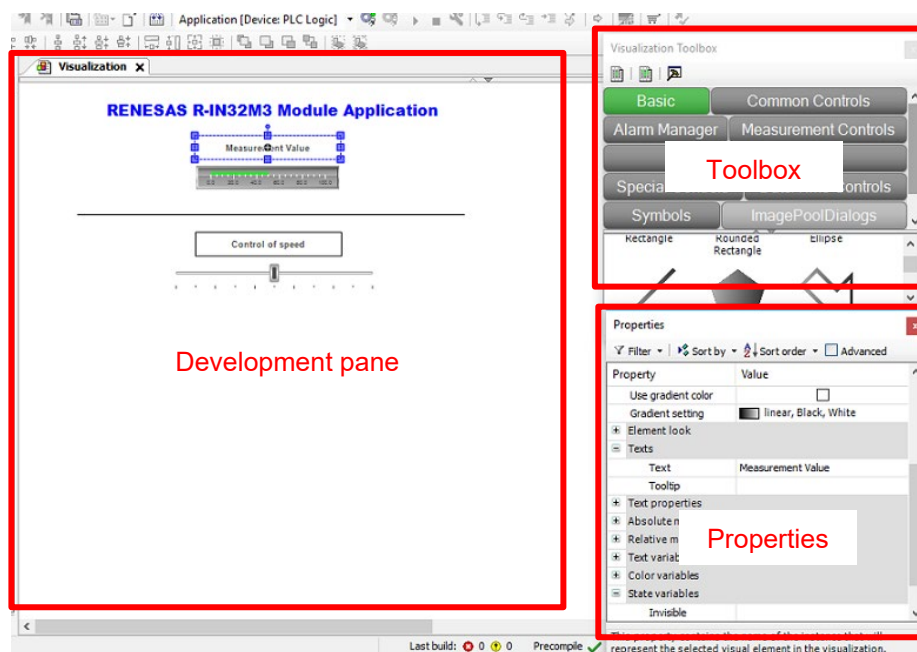


Figure 4.6 Development of visualisation example

To design an example just drag and drop the display and control item out of the "Toolbox" in the "Development pane"

4.3.1.3 Development of PLC program

For our PLC example we have to establish a small application program.

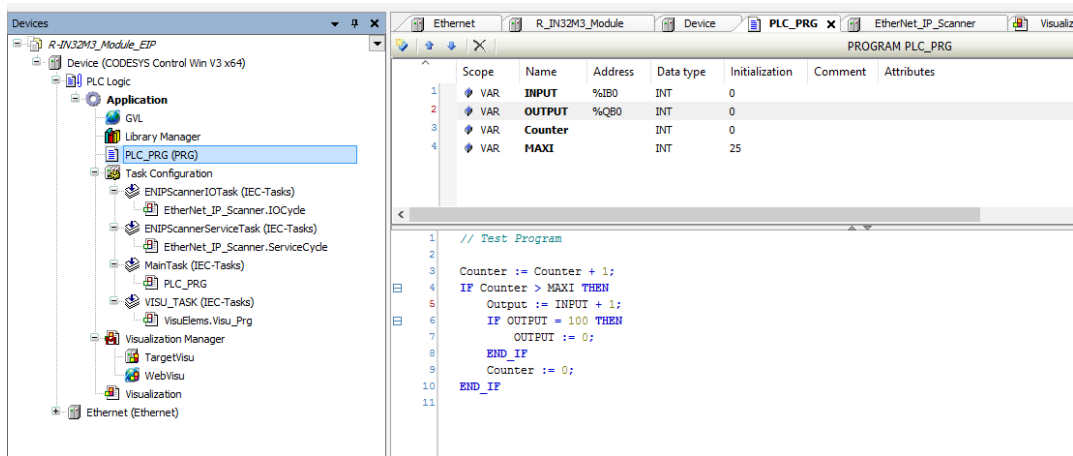


Figure 4.7 Development of visualisation example

Therefore, please double click of “PLC_PRG” in the project tree.

Input the necessary variables like “INPUT”, “OUTPUT”, “COUNTER” and “MAXI”.

The variables “INPUT” and “OUTPUT” are assigned to dedicated device address. These addresses can be found in the device configuration. Make a double click on the Input or/and Output module of the device and open the tab “PNIO Module I/O Mapping”.

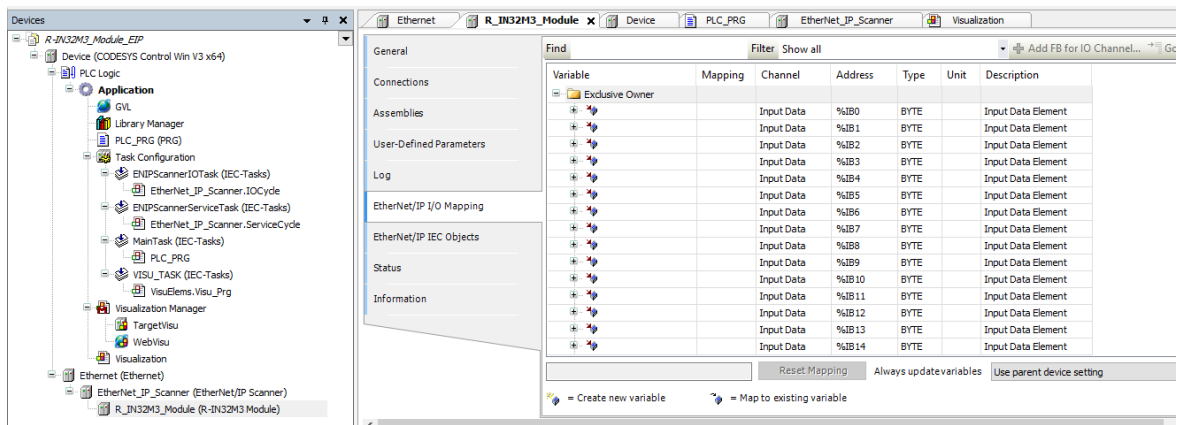


Figure 4.8 Parameter addresses

Here are the addresses of the module parameters. In our case the address %IB0 will be used for the INPUT variable and %QB0 for OUTPUT.

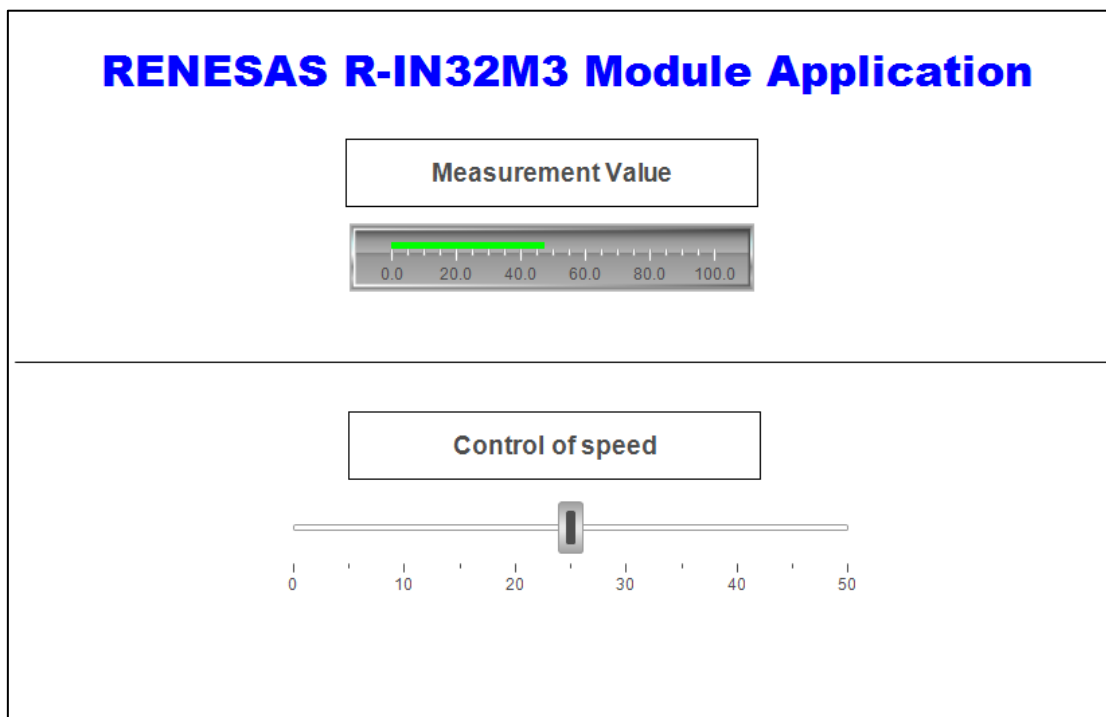
On the "PLC_PRG" tabbed page, write the source code in the code-writing section with defined variables.

```
1 // Test Program
2
3 COUNTER := COUNTER + 1;
4 IF COUNTER > MAXI THEN
5     OUTPUT := INPUT + 1;
6     IF OUTPUT = 100 THEN
7         OUTPUT := 0;
8     END_IF
9     COUNTER := 0;
10 END_IF
11
```

Figure 4.9 PLC program

4.3.1.4 Result of Running the Program

By starting the PLC, the following screen will come up:



The measurement value (green bar) will move from "0" to "100" and back to "0".

The speed of the increase of the measurement value can be controlled by the slider. The default value is 25. The highest speed is a "0" and the slowest is a "50".

Revision History

Rev.	Date	Description	
		Page	Summary
Rev.1.0	2020.12.15	-	First Edition
Rev.1.01	2021.6.25	3	Add Evaluation Environment part

Notice

1. Descriptions of circuits, software and other related information in this document are provided only to illustrate the operation of semiconductor products and application examples. You are fully responsible for the incorporation or any other use of the circuits, software, and information in the design of your product or system. Renesas Electronics disclaims any and all liability for any losses and damages incurred by you or third parties arising from the use of these circuits, software, or information.
2. Renesas Electronics hereby expressly disclaims any warranties against and liability for infringement or any other claims involving patents, copyrights, or other intellectual property rights of third parties, by or arising from the use of Renesas Electronics products or technical information described in this document, including but not limited to, the product data, drawings, charts, programs, algorithms, and application examples.
3. No license, express, implied or otherwise, is granted hereby under any patents, copyrights or other intellectual property rights of Renesas Electronics or others.
4. You shall not alter, modify, copy, or reverse engineer any Renesas Electronics product, whether in whole or in part. Renesas Electronics disclaims any and all liability for any losses or damages incurred by you or third parties arising from such alteration, modification, copying or reverse engineering.
5. Renesas Electronics products are classified according to the following two quality grades: "Standard" and "High Quality". The intended applications for each Renesas Electronics product depends on the product's quality grade, as indicated below.
"Standard": Computers; office equipment; communications equipment; test and measurement equipment; audio and visual equipment; home electronic appliances; machine tools; personal electronic equipment; industrial robots; etc.
"High Quality": Transportation equipment (automobiles, trains, ships, etc.); traffic control (traffic lights); large-scale communication equipment; key financial terminal systems; safety control equipment; etc.
Unless expressly designated as a high reliability product or a product for harsh environments in a Renesas Electronics data sheet or other Renesas Electronics document, Renesas Electronics products are not intended or authorized for use in products or systems that may pose a direct threat to human life or bodily injury (artificial life support devices or systems; surgical implantations; etc.), or may cause serious property damage (space system; undersea repeaters; nuclear power control systems; aircraft control systems; key plant systems; military equipment; etc.). Renesas Electronics disclaims any and all liability for any damages or losses incurred by you or any third parties arising from the use of any Renesas Electronics product that is inconsistent with any Renesas Electronics data sheet, user's manual or other Renesas Electronics document.
6. When using Renesas Electronics products, refer to the latest product information (data sheets, user's manuals, application notes, "General Notes for Handling and Using Semiconductor Devices" in the reliability handbook, etc.), and ensure that usage conditions are within the ranges specified by Renesas Electronics with respect to maximum ratings, operating power supply voltage range, heat dissipation characteristics, installation, etc. Renesas Electronics disclaims any and all liability for any malfunctions, failure or accident arising out of the use of Renesas Electronics products outside of such specified ranges.
7. Although Renesas Electronics endeavors to improve the quality and reliability of Renesas Electronics products, semiconductor products have specific characteristics, such as the occurrence of failure at a certain rate and malfunctions under certain use conditions. Unless designated as a high reliability product or a product for harsh environments in a Renesas Electronics data sheet or other Renesas Electronics document, Renesas Electronics products are not subject to radiation resistance design. You are responsible for implementing safety measures to guard against the possibility of bodily injury, injury or damage caused by fire, and/or danger to the public in the event of a failure or malfunction of Renesas Electronics products, such as safety design for hardware and software, including but not limited to redundancy, fire control and malfunction prevention, appropriate treatment for aging degradation or any other appropriate measures. Because the evaluation of microcomputer software alone is very difficult and impractical, you are responsible for evaluating the safety of the final products or systems manufactured by you.
8. Please contact a Renesas Electronics sales office for details as to environmental matters such as the environmental compatibility of each Renesas Electronics product. You are responsible for carefully and sufficiently investigating applicable laws and regulations that regulate the inclusion or use of controlled substances, including without limitation, the EU RoHS Directive, and using Renesas Electronics products in compliance with all these applicable laws and regulations. Renesas Electronics disclaims any and all liability for damages or losses occurring as a result of your noncompliance with applicable laws and regulations.
9. Renesas Electronics products and technologies shall not be used for or incorporated into any products or systems whose manufacture, use, or sale is prohibited under any applicable domestic or foreign laws or regulations. You shall comply with any applicable export control laws and regulations promulgated and administered by the governments of any countries asserting jurisdiction over the parties or transactions.
10. It is the responsibility of the buyer or distributor of Renesas Electronics products, or any other party who distributes, disposes of, or otherwise sells or transfers the product to a third party, to notify such third party in advance of the contents and conditions set forth in this document.
11. This document shall not be reprinted, reproduced or duplicated in any form, in whole or in part, without prior written consent of Renesas Electronics.
12. Please contact a Renesas Electronics sales office if you have any questions regarding the information contained in this document or Renesas Electronics products.

(Note1) "Renesas Electronics" as used in this document means Renesas Electronics Corporation and also includes its directly or indirectly controlled subsidiaries.

(Note2) "Renesas Electronics product(s)" means any product developed or manufactured by or for Renesas Electronics.

(Rev.4.0-1 November 2017)

Corporate Headquarters

TOYOSU FORESIA, 3-2-24 Toyosu,
Koto-ku, Tokyo 135-0061, Japan
www.renesas.com

Trademarks

Renesas and the Renesas logo are trademarks of Renesas Electronics Corporation. All trademarks and registered trademarks are the property of their respective owners.

Contact information

For further information on a product, technology, the most up-to-date version of a document, or your nearest sales office, please visit:
www.renesas.com/contact/.