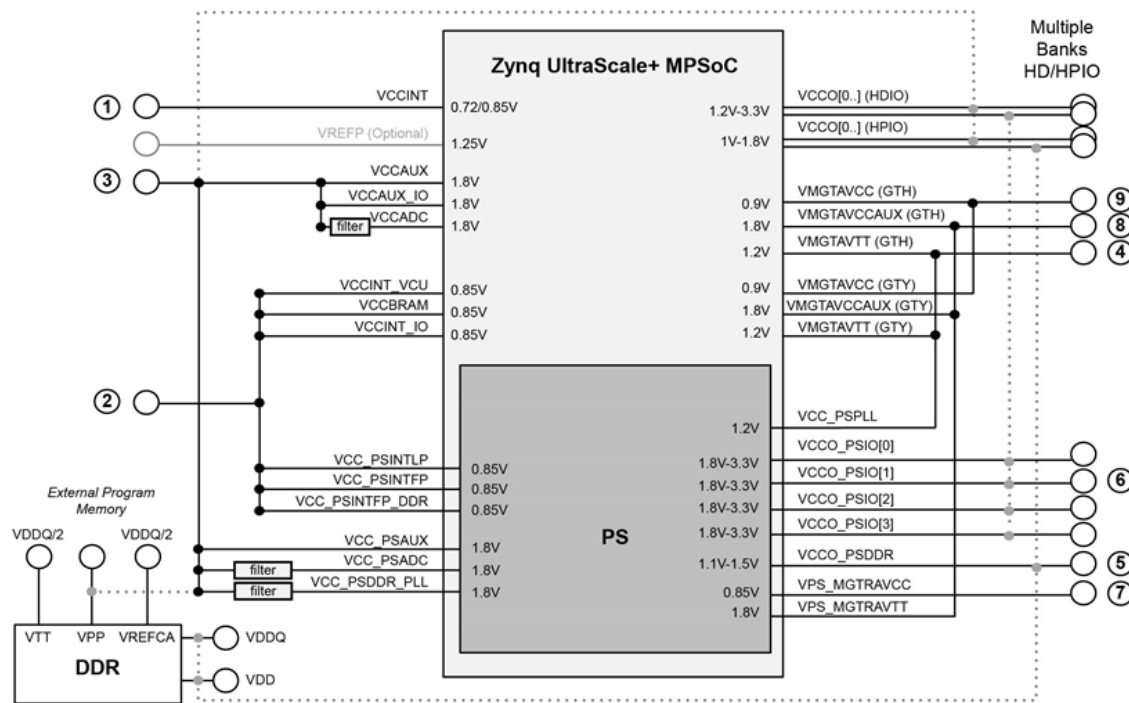
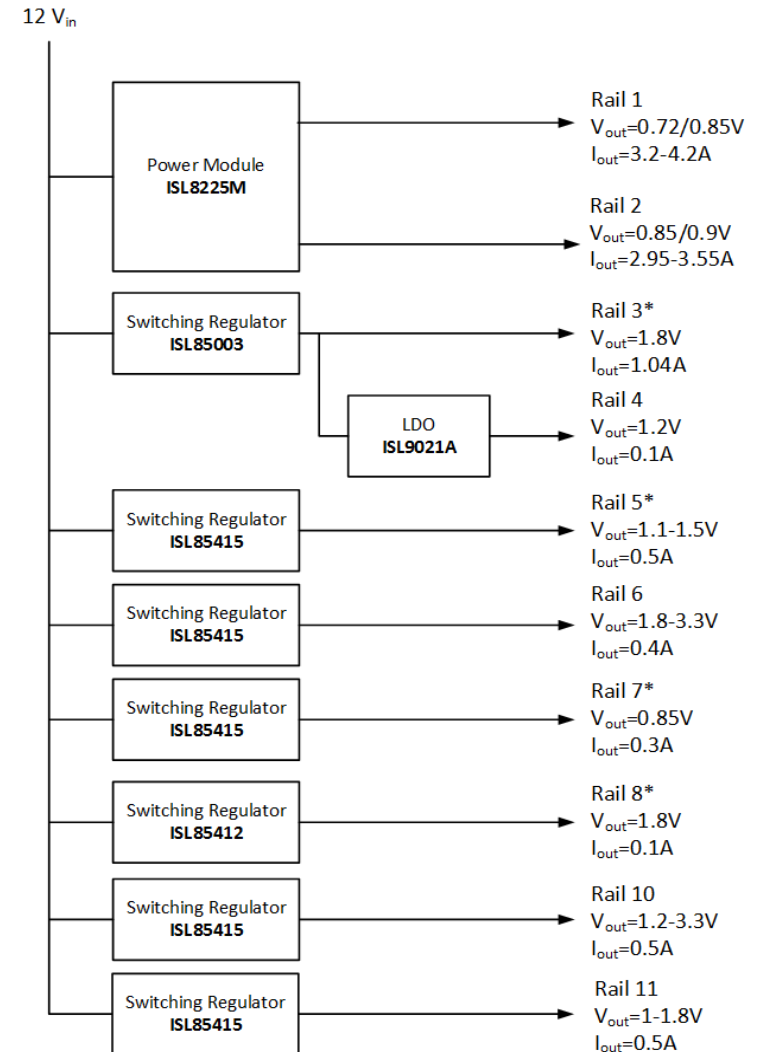


USECASE 2 #1



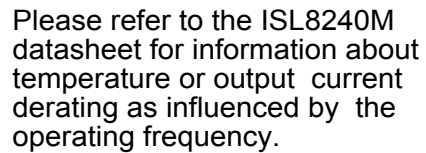
© Copyright 2013-2017 Xilinx, Inc.
All Rights Reserved.

Rail	Voltage	Power Supply Rails
Rail 1	0.72/0.85V	VCCINT
Rail 2	0.85/0.9V	VCC_PSINTFP, VCC_PSINTLP, VCC_PSINTFP_DDR, VCCINT_VCU, VCCINT_IO, VCCBRAM
Rail 3*	1.8V*	VCC_PSAUX, VCCAUX, VCCAUX_IO, VCC_PSDDR_PLL, VCCADC, VCC_PSADC
Rail 4*	1.2V*	VMGTAVTT (GTH), VMGTAVTT (GTY), VCC_PSPLL
Rail 5	1.1-1.5V	VCCO_PSDDR
Rail 6	1.8-3.3V	VCCO_PSIQ
Rail 7*	0.85V*	VPS_MGTRAVCC
Rail 8*	1.8V*	VMGTAVCCAUX (GTH), VMGTAVCCAUX (GTY), VPS_MGTRAVTT
Rail 9*	0.9V*	VMGTAVCC (GTH), VMGTAVCC (GTY)
Rail 10	1.2-3.3V	HDIO_VCCO
Rail 11	1-1.8V	HPIO_VCCO



Title	ZYNQ US+ MPSoC Power Rails	
Size B	Document Number <Doc>	Rev A
Date:	Thursday, March 09, 2017	Sheet 1 of 10

VIN RANGE:
4.5V to 20V



Title			
ISL8225M-dual-1			
Size A	Document Number		Rev
Date:	Thursday, March 09, 2017	Sheet 2 of 10	

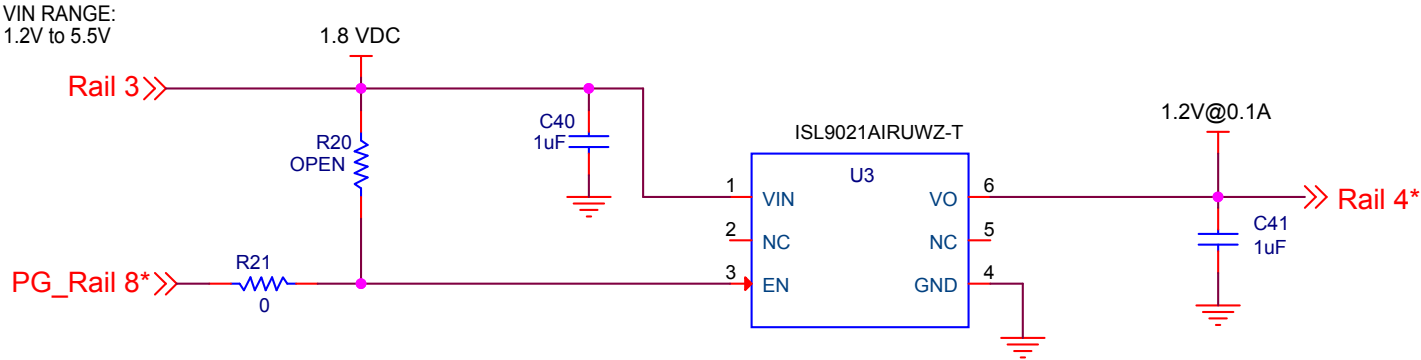
an external sync is not
constant current mode
or discontinuous current
mode (DCM) can be configured
by setting the SYNC pin to a high impedance state (R15 = OPEN).

If custom compensation is desired, remove the ground connection on the COMP pin to enable external compensation.

Programmable Soft Start is available in the ISL85003A
(without synchronization)

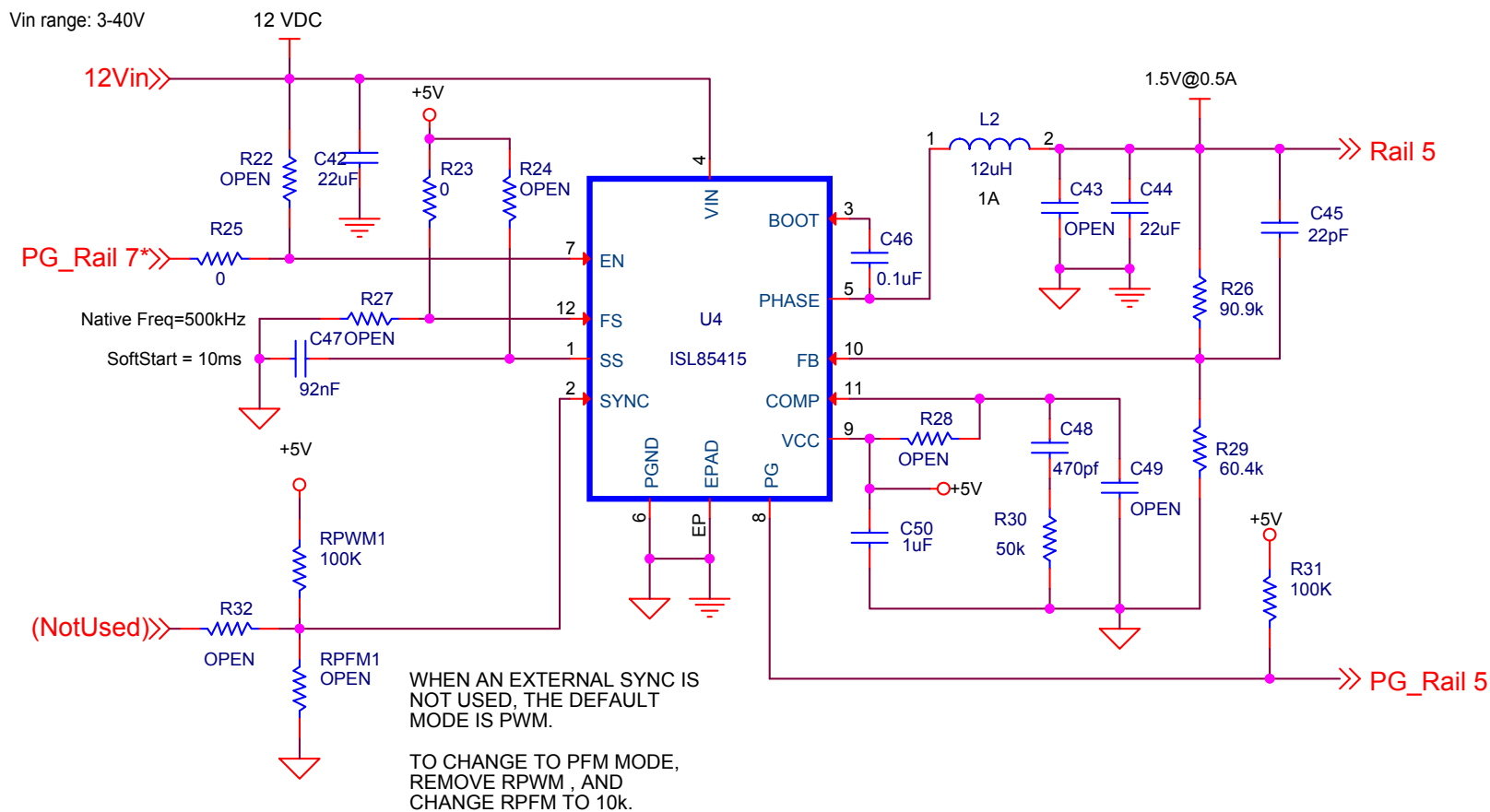
Title				ISL85003-SINGLE-1			
Size A	Document Number <Doc>					Rev <RevC>	
Date:	Thursday, March 09, 2017			Sheet	3	of	10

ISL9021A Single Output (250mA)



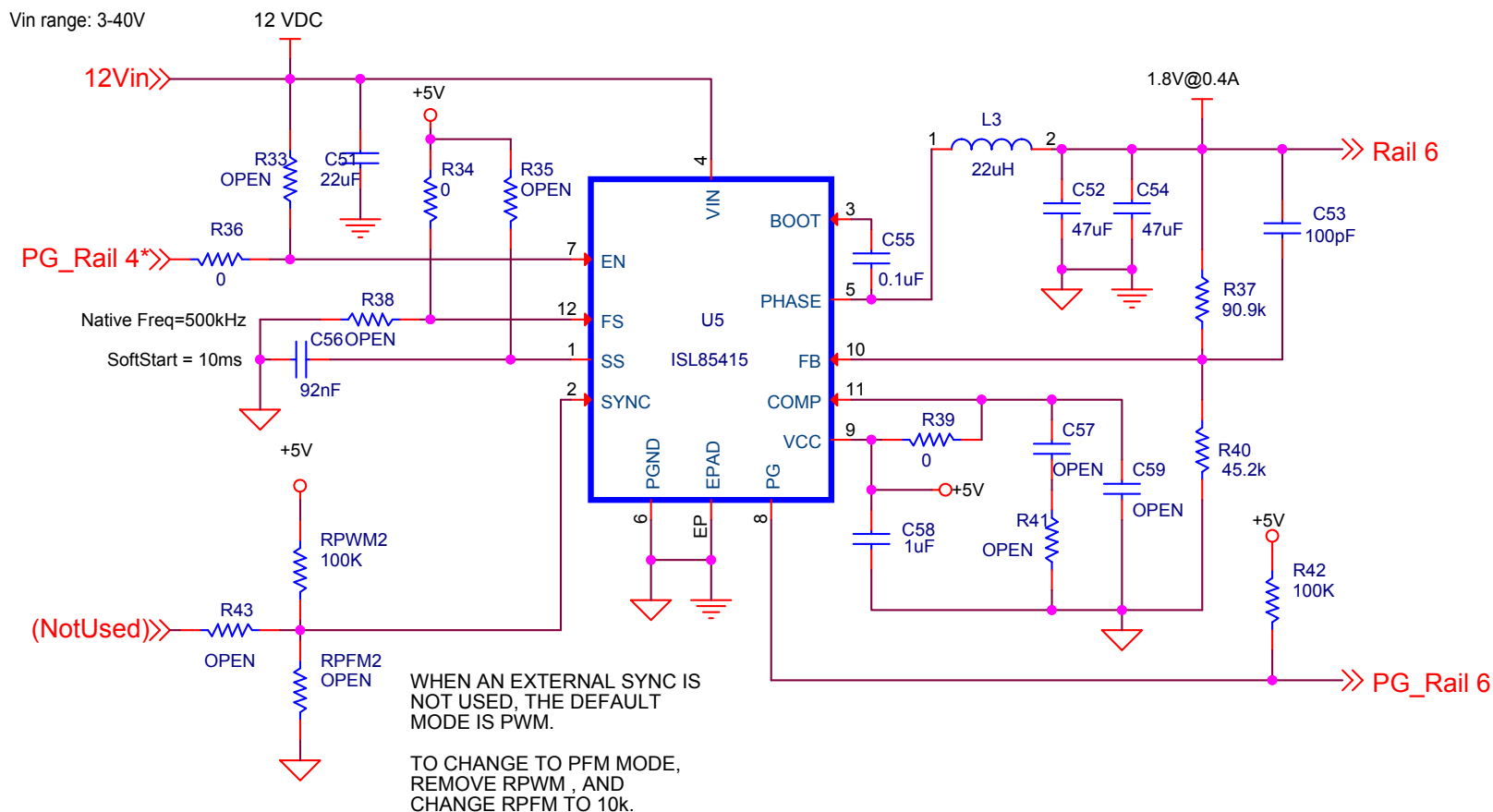
Title		
ISL9021A-SINGLE-1		
Size A	Document Number	Rev
Date:	Sheet 4	of 10

ISL85415 SINGLE OUTPUT (500mA)



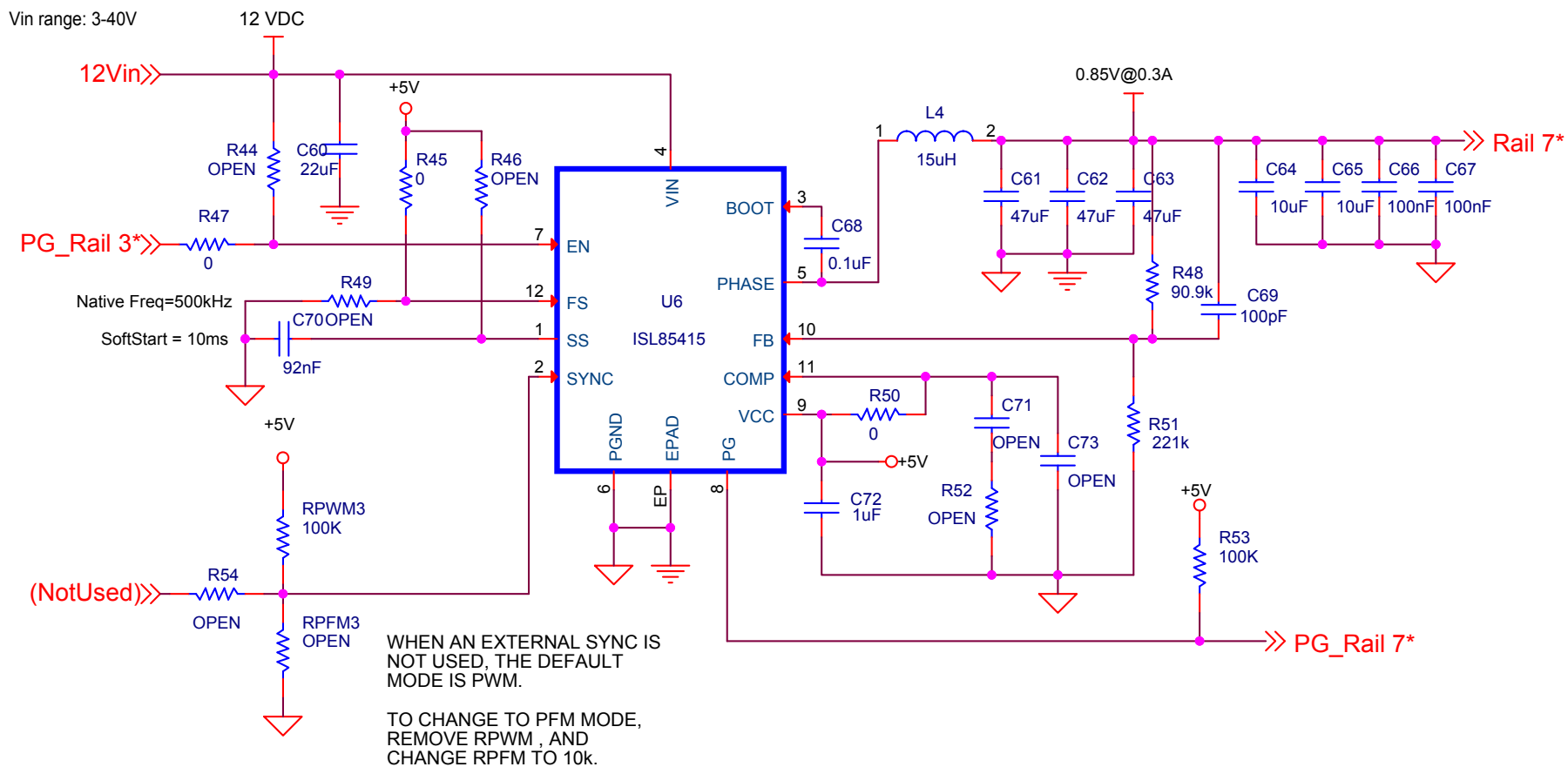
Title		
ISL85415-SINGLE-1		
Size A	Document Number	Rev
Date:	Thursday, March 09, 2017	Sheet 5 of 10

ISL85415 SINGLE OUTPUT (500mA)



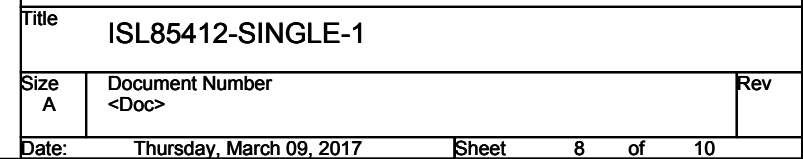
Title		
ISL85415-SINGLE-1		
Size A	Document Number	Rev
Date:	Thursday, March 09, 2017	Sheet 6 of 10

ISL85415 SINGLE OUTPUT (500mA)

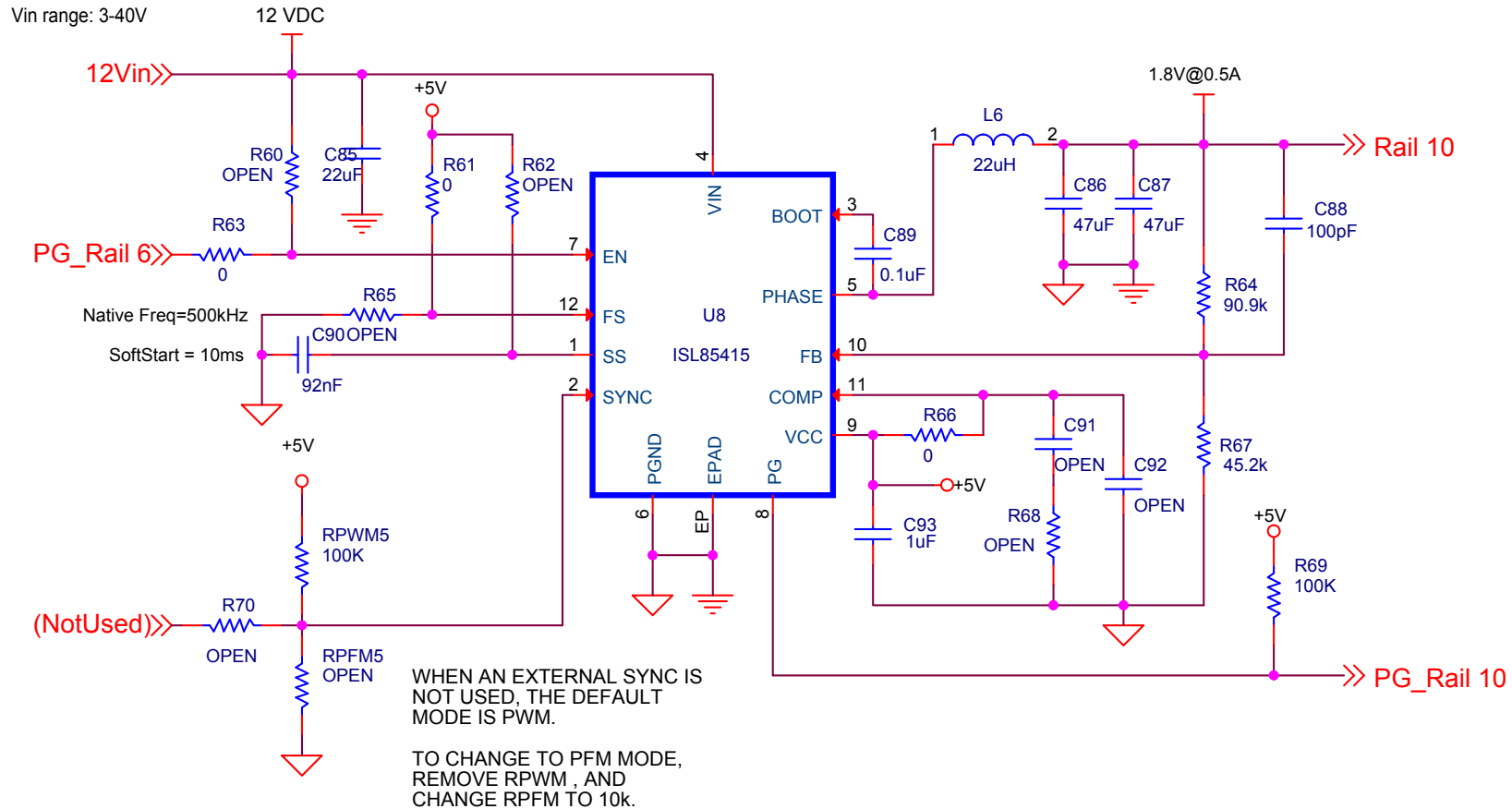


Title		
ISL85415-SINGLE-1		
Size	Document Number	Rev
A		
Date:	Thursday, March 09, 2017	Sheet 7 of 10

VIN RANGE:
3.5 .. 40V

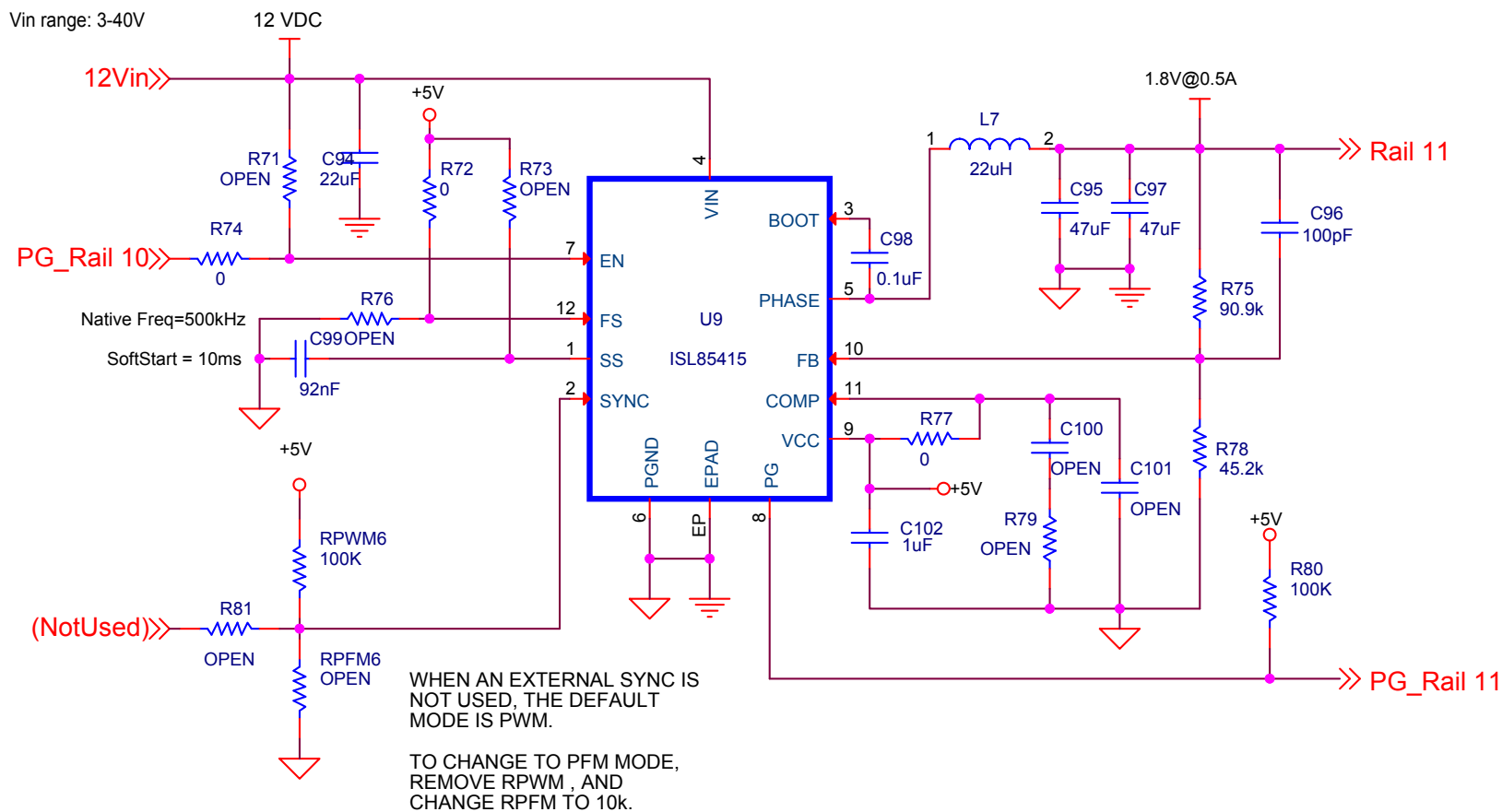


ISL85415 SINGLE OUTPUT (500mA)



Title		
ISL85415-SINGLE-1		
Size A	Document Number	Rev
Date:	Thursday, March 09, 2017	Sheet 9 of 10

ISL85415 SINGLE OUTPUT (500mA)



Title		
ISL85415-SINGLE-1		
Size A	Document Number	Rev
Date:	Thursday, March 09, 2017	Sheet 10 of 10