

---

[Upgrade to revision]

R20TS0726EJ0100

Rev.1.00

Jul. 16. 2021

Solution Toolkit

QE for BLE[RX] V1.1.0:

Development Assistance Tool for Bluetooth® Low Energy

---

## Overview

We have updated the products in the title as follows:

- QE for BLE[RX], the development assistance tool for Bluetooth® low energy: From V1.0.0 to V1.1.0

### 1. Version to Be Updated

- QE for BLE[RX] V1.0.0

How to check the version: In e<sup>2</sup> studio, select [Help] and then [e<sup>2</sup> studio Installation Details], open the [Installed Software] tab, and then check the version of Renesas QE for BLE[RX].

### 2. Description of Revision

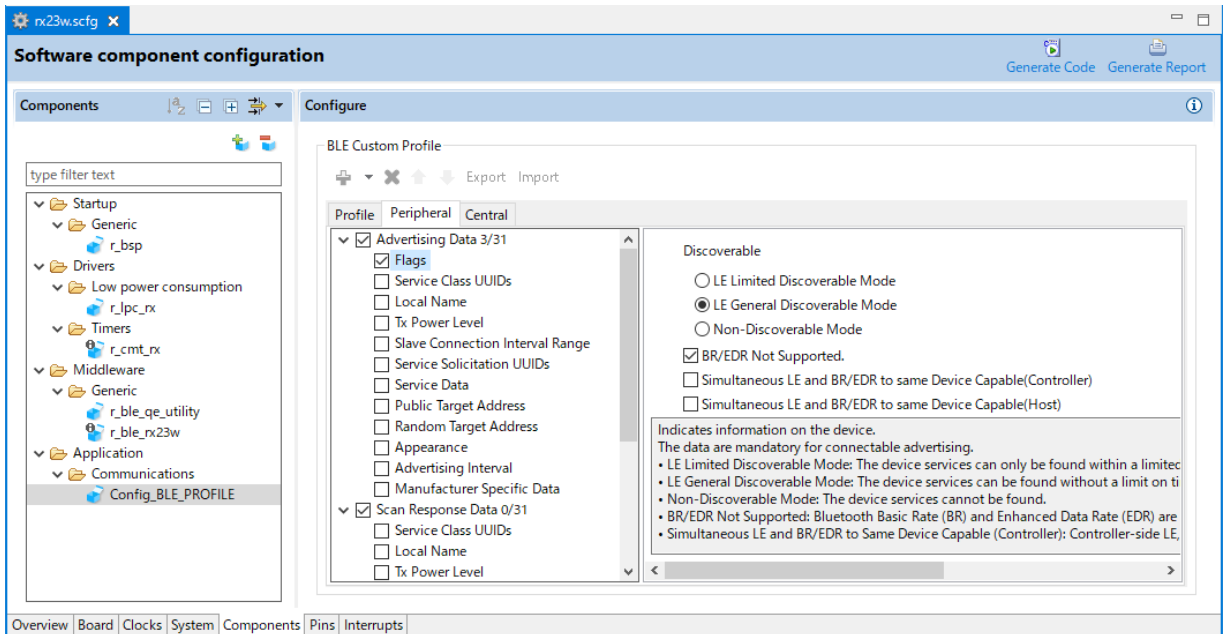
The major revision points are as follows. For details and installation instructions, see the following release note.

- QE for BLE[RA, RE] V1.1.0 Release Note

<https://www.renesas.com/search/keyword-search.html-genre=document&q=r20ut5011>

#### 2.1 Improvements to Functionality

- Integrated development environment e<sup>2</sup> studio 64-bit edition is now supported.  
From this version, the product can be used in the e<sup>2</sup> studio 64-bit version (e<sup>2</sup> studio 2021-07 or later) environment. Note that e<sup>2</sup> studio 32-bit edition is no longer supported. Install QE for BLE[RX] V1.1.0 or later in an environment in which e<sup>2</sup> studio 2021-07 or later is installed.
- Improvement in the GUI for property file definitions  
If you want to perform unique data communication (not through profiles provided by Bluetooth SIG), you must define a profile. The custom profile generation function for changing profiles was improved for better visibility of values entered for characteristics and descriptors.
- Support of advertising scan settings  
This tool supports settings for advertising, which is one of the features of BLE. You can specify details such as the timing and frequency of advertisement scan communications. Advertisement mode and scan mode can be configured in the Peripheral tab and Central tab, respectively.



### 3. Operating Environment

- Integrated development environment e<sup>2</sup> studio 2021-07 or later

For details about how to use this product, see the QE item from the [Help] menu of e<sup>2</sup> studio.

### 4. Obtaining the Product

Download the installer for QE for BLE[RX] V1.1.0 from the following URL:

<https://www.renesas.com/qe-ble>

**Revision History**

Rev.	Date	Description	
		Page	Summary
1.00	Jul.16.21	-	First edition issued

Renesas Electronics has used reasonable care in preparing the information included in this document, but Renesas Electronics does not warrant that such information is error free. Renesas Electronics assumes no liability whatsoever for any damages incurred by you resulting from errors in or omissions from the information included herein.

The past news contents have been based on information at the time of publication. Now changed or invalid information may be included.

The URLs in the Tool News also may be subject to change or become invalid without prior notice.

**Corporate Headquarters**

TOYOSU FORESIA, 3-2-24 Toyosu,  
Koto-ku, Tokyo 135-0061, Japan  
[www.renesas.com](http://www.renesas.com)

**Trademarks**

Renesas and the Renesas logo are trademarks of Renesas Electronics Corporation. All trademarks and registered trademarks are the property of their respective owners.

**Contact information**

For further information on a product, technology, the most up-to-date version of a document, or your nearest sales office, please visit:  
[www.renesas.com/contact/](http://www.renesas.com/contact/)