

[Released on the Web]

R20TS0815EJ0100

Solution Toolkit

Rev.1.00

Jan. 16, 2022

QE for Motor[RA] V1.0.0:

Development Assistance Tool for Motor

Outline

QE for Motor[RA] V1.0.0 has been released on the web.

QE for Motor[RA] is an assistance tool for applications that operates under the e2 studio integrated development environment. In the development of an embedded system based on the RA6T2 that incorporates the motor unit, this product supports the configuration of motor middleware and related drivers provided by FSP (Flexible Software Package). Also, QE for Motor[RA] assists tuning and analysis by coordinating Renesas Motor Workbench to support the development of motor software.

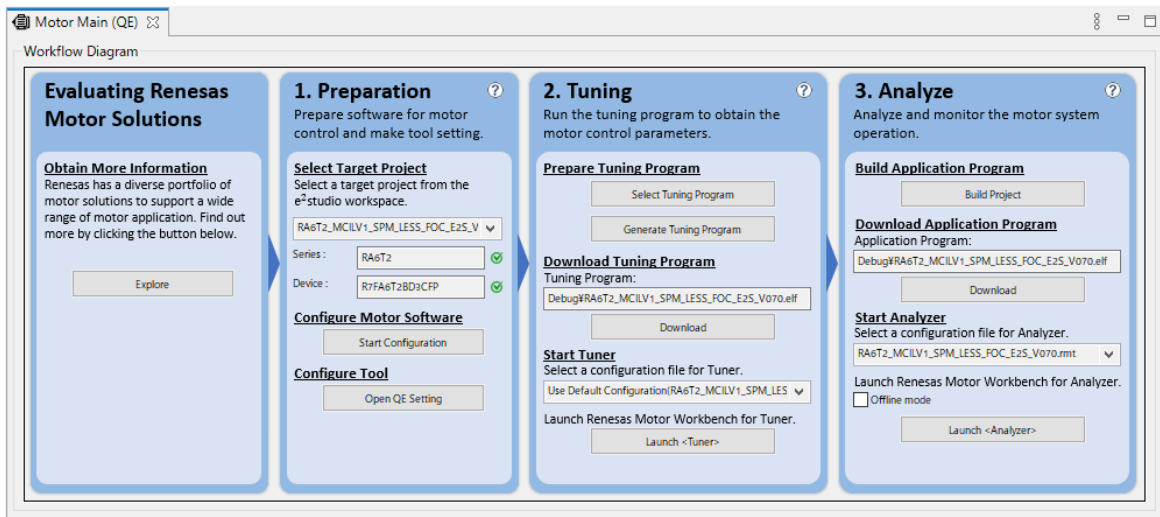
This product is available free of charge

1. Product Features

The three functions below make it easy to develop software for motors.

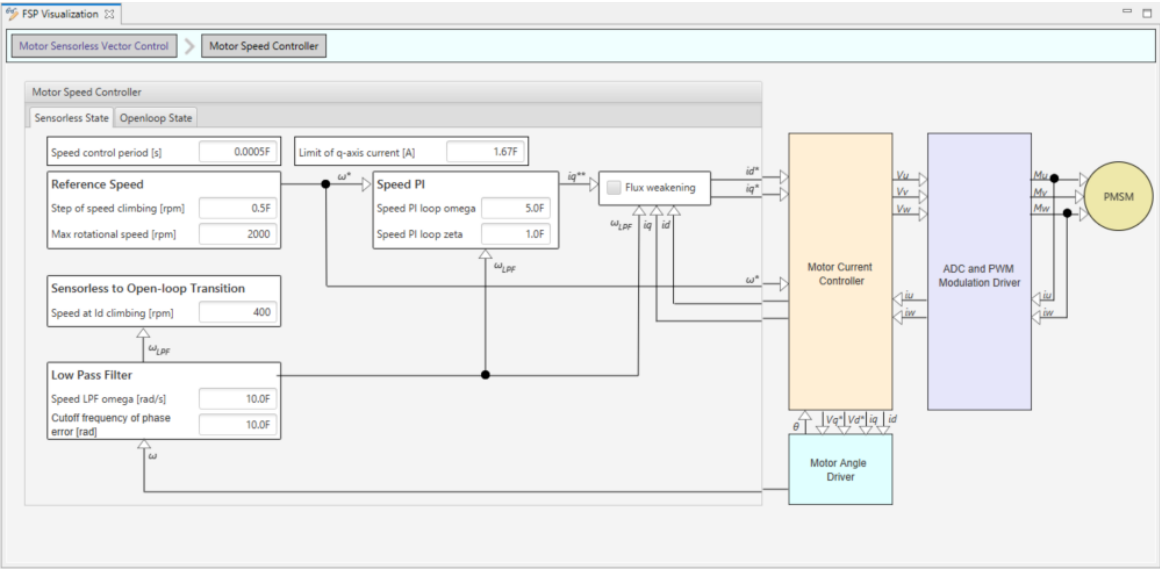
1.1 Workflow View

By following to the Workflow Diagram, it is possible to configurate the middleware and related drivers for motor. Also, tuning and analysis can be easily implemented by coordinating Renesas Motor Workbench from the diagram.



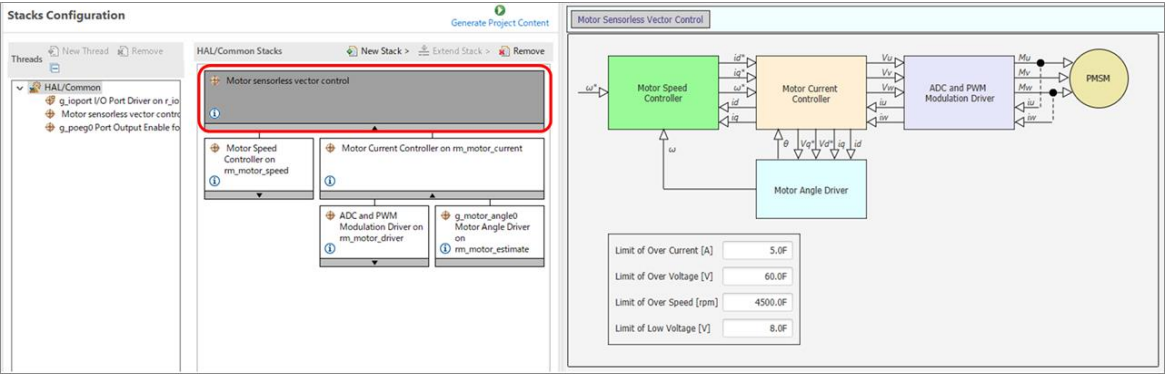
1.2 Motor Configuration GUI

By using motor system configuration diagram with hierarchical structures that synchronize with FSP (Flexible Software Package: a software package for middleware and drivers), you can efficiently configure the middleware and related driver for the motor.



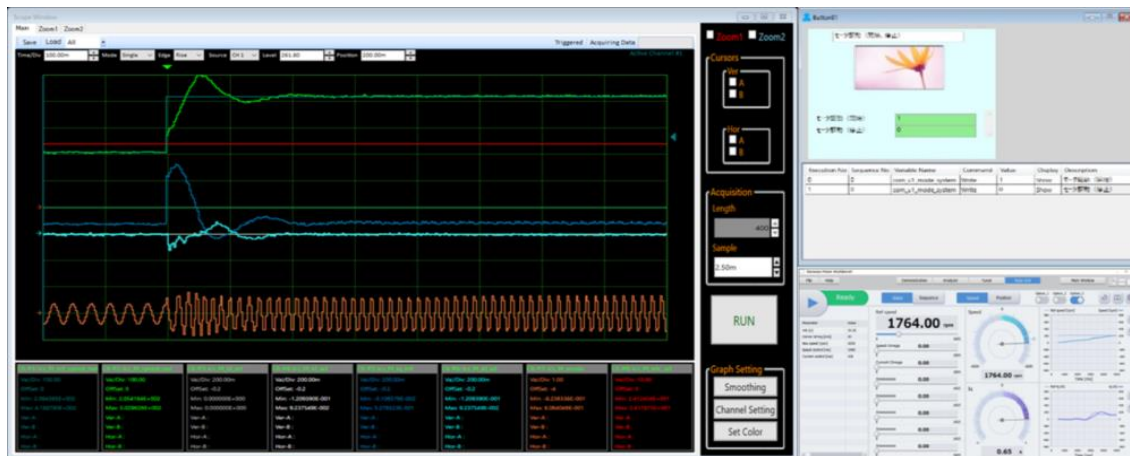
The motor configuration GUI is displayed on [FSP Visualization] view in e2 studio. [FSP Visualization] view is opened in [FSP Configuration] perspective. Also, [FSP Visualization] view can be opened from main menu of e2 studio, [Renesas Views]->[C/C++]->[FSP Visualization].

The motor configuration GUI is displayed when selecting the stack of [supported FSP module](#) on the [Stacks] tab in FSP configuration editor.



1.3 Coordination with Renesas Motor Workbench

QE automatically sets the necessary settings for Renesas Motor Workbench, so you can tune and analyze the motor by clicking on [Launch Tuner] and [Launch Analyzer] button in the workflow view.



2. Supported Devices

RA Family

- RA6 Series : RA6T2

3. Supported Software

Middleware for motor

- RA Flexible Software Package (FSP)
 - Motor Sensorless Vector Control: rm_motor_sensorless V3.5.0 (or later)
 - Motor Encoder Vector Control: rm_motor_encoder V3.5.0(or later)
 - 120-degree control: rm_motor_120_degree V3.5.0(or later)

4. Operating Environment

- Windows 8.1, and Windows 10 (64bit)
- Renesas e² studio 2021-10 (or later)
 - ※ If you are using a version of the e2 studio earlier than 2021-10, please update it to 2021-10 or later.
- Renesas Motor Workbench V3.0.0(or later)
 - ※ If you are using a version of the Renesas Motor Workbench earlier than V3.0.0, please update it to V3.0.0 or later.

5. Obtaining the Product

Obtain QE for Motor [RA] V1.0.0 from the following URL:

<https://www.renesas.com/qe-motor>

For details on how to use this product, refer to the [Help] menu.

Revision History

Rev.	Date	Description	
		Page	Summary
1.00	Jan.16.22	-	First edition issued

Renesas Electronics has used reasonable care in preparing the information included in this document, but Renesas Electronics does not warrant that such information is error free. Renesas Electronics assumes no liability whatsoever for any damages incurred by you resulting from errors in or omissions from the information included herein.

The past news contents have been based on information at the time of publication. Now changed or invalid information may be included.

The URLs in the Tool News also may be subject to change or become invalid without prior notice.

Corporate Headquarters

TOYOSU FORESIA, 3-2-24 Toyosu,
Koto-ku, Tokyo 135-0061, Japan
www.renesas.com

Trademarks

Renesas and the Renesas logo are trademarks of Renesas Electronics Corporation. All trademarks and registered trademarks are the property of their respective owners.

Contact information

For further information on a product, technology, the most up-to-date version of a document, or your nearest sales office, please visit:
www.renesas.com/contact/