

[Notes]

R20TS0623ES0100

Rev.1.00

Oct. 01, 2020

e<sup>2</sup> studio Smart Configurator Plug-in,

Smart Configurator for RX

## Outline

When using the products in the title, note the following points.

1. When using “r\_sci\_rx” component and making pin configurations for RXD and TXD
2. When using “r\_sci\_rx” component, duplicate SCI11 channels are displayed in the Components configuration panel

## 1. When using “r\_sci\_rx” component and making pin configurations for RXD and TXD

### 1.1 Applicable Products

- e<sup>2</sup> studio 2020-07 (Smart Configurator Plug-in V2.6.0)
- Smart Configurator for RX V2.6.0

### 1.2 Applicable Devices

- RX family:  
RX651, RX65N, RX66N, RX72M, and RX72N Group

### 1.3 Details

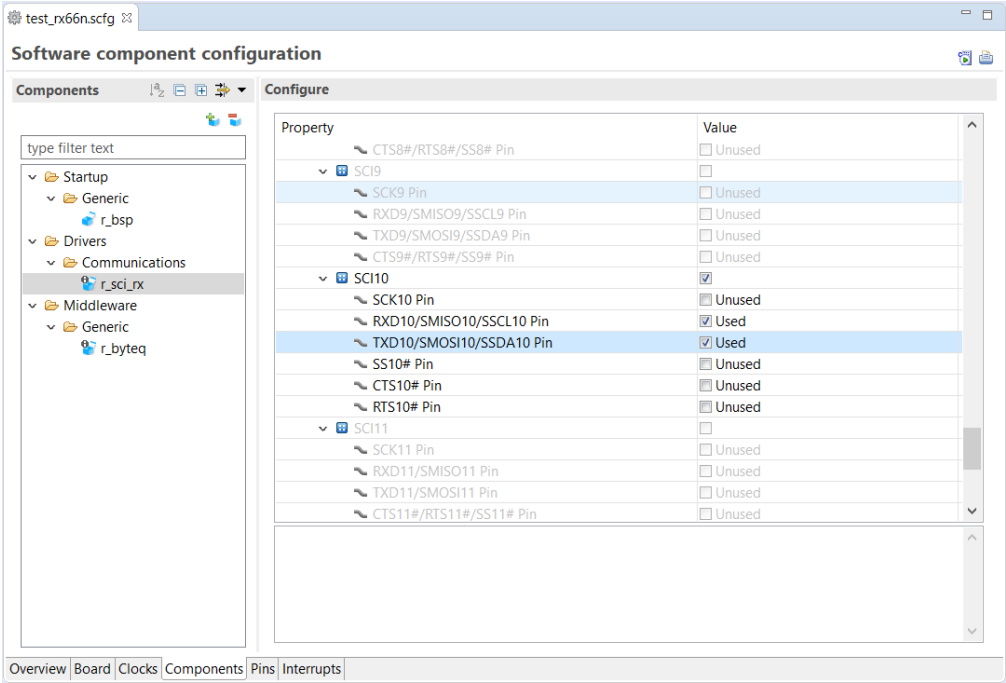
When the pin assignment for the shared pins (SMISO<sub>n</sub>/SSCL<sub>n</sub> and SMOSI<sub>n</sub>/SSDA<sub>n</sub>) is canceled when configuring the pin assignment for RXD<sub>n</sub> and TXD<sub>n</sub> for “r\_sci\_rx” component on SCI channels, a pin error may be displayed.

The affected SCI channels differ depending on the microcontroller group. See below for the details:

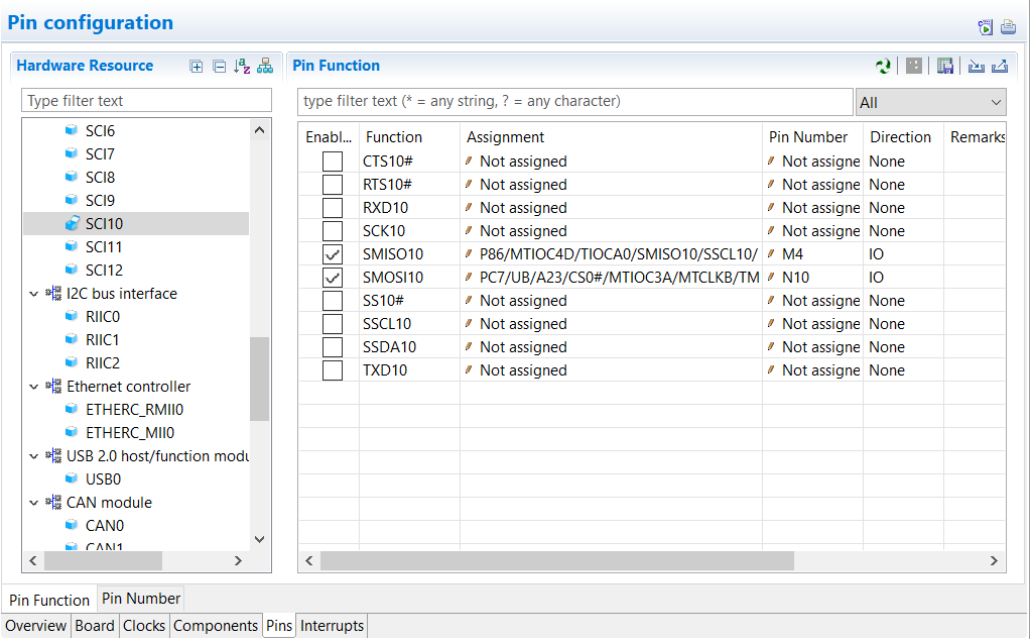
Group	SCI channel	Pin assignment	Shared pins that will display pin errors
• RX651	10	RXD10 and TXD10	SMISO10/SSCL10 and SMOSI10/SSDA10
• RX65N	11	RXD11 and TXD11	SMISO11/SSCL11 and SMOSI11/SSDA11
• RX66N	8	RXD8	SMISO8/SSCL8
• RX72M	9	RXD9	SMISO9/SSCL9
• RX72N	10	RXD10 and TXD10	SMISO10/SSCL10 and SMOSI10/SSDA10
• RX72N	11	RXD11 and TXD11	SMISO11/SSCL11 and SMOSI11/SSDA11

➤ Example: When configuring pin assignment for RXD10 and TXD10 on SCI10

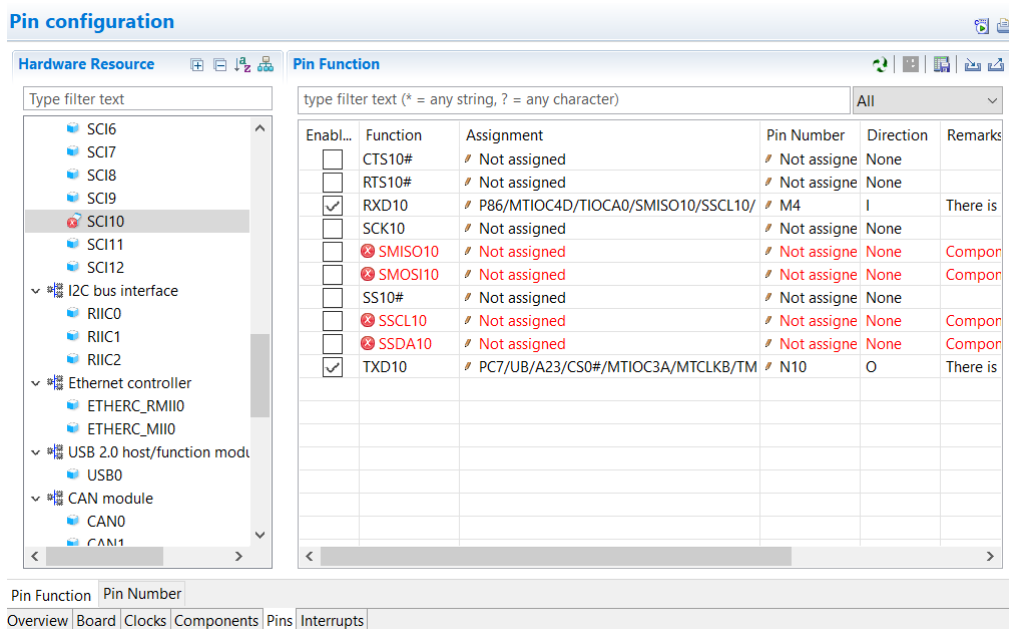
(1) In the Components page, SCI10 pin is enabled.



(2) In the Pins page, the pin assignment for SMISO10 and SMOSI10 is configured automatically.



- (3) In the Pins page, when SMISO10 and SMOSI10 are unselected, and then RXD10 and TXD10 are selected, pin errors are displayed for the shared pins incorrectly.



### 1.4 Workaround

Please ignore the pin errors of the shared pins if the pins RXDn and TXDn are set.

### 1.5 Schedule for Fixing the Problem

This problem will be fixed in the following versions. (Scheduled to be released in October 2020.)

- e<sup>2</sup> studio 2020-10
- Smart Configurator for RX V2.7.0

2. When using r\_sci\_rx component, duplicate SCI11 channels are displayed in the Components configuration panel

2.1 Applicable Products

- e² studio 2020-04 (Smart Configurator Plug-in V2.5.0) or later
- Smart Configurator for RX V2.5.0

This problem applies if the above products are used with the following versions of RX Family SCI Module Using Firmware Integration Technology.

- The versions of “r\_sci\_rx” component
  - v3.30
  - v3.40
  - v3.50
  - v3.60

2.2 Applicable Devices

- RX family:
  - RX66N, RX72M, and RX72N Group
- 

2.3 Details

Duplicate SCI11 channels are displayed in the Components configuration panel. Additionally, if only one of SCI11 is enabled, related SCI pins configuration will not be reflected correctly to the Pins page.

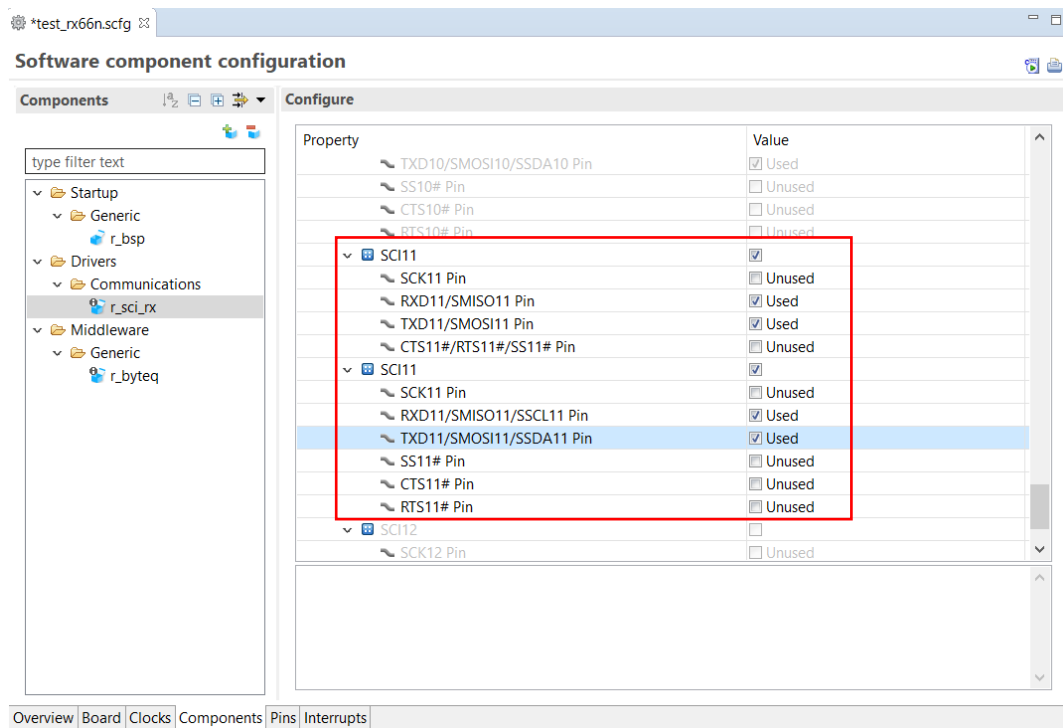


Figure 2.1 In the Components configuration panel, duplicated SCI11 channels are displayed

### 2.4 Workaround

Please make the same settings in both SCI11 channels to ensure the pin configuration is reflected correctly to the Pins page.

### 2.5 Schedule for Fixing the Problem

This problem will be fixed in the following version of “r\_sci\_rx” component. (Scheduled to be released in December 2020.)

RX Family SCI Module Using Firmware Integration Technology, r\_sci\_rx v3.70

**Revision History**

Rev.	Date	Description	
		Page	Summary
1.00	Oct.01.20	-	First edition issued

Renesas Electronics has used reasonable care in preparing the information included in this document, but Renesas Electronics does not warrant that such information is error free. Renesas Electronics assumes no liability whatsoever for any damages incurred by you resulting from errors in or omissions from the information included herein.

The past news contents have been based on information at the time of publication. Now changed or invalid information may be included.

The URLs in the Tool News also may be subject to change or become invalid without prior notice.

**Corporate Headquarters**

TOYOSU FORESIA, 3-2-24 Toyosu,  
Koto-ku, Tokyo 135-0061, Japan  
[www.renesas.com](http://www.renesas.com)

**Contact information**

For further information on a product, technology, the most up-to-date version of a document, or your nearest sales office, please visit:  
[www.renesas.com/contact/](http://www.renesas.com/contact/)

**Trademarks**

Renesas and the Renesas logo are trademarks of Renesas Electronics Corporation. All trademarks and registered trademarks are the property of their respective owners.

© 2020 Renesas Electronics Corporation. All rights reserved.

TS Colophon 4.1