

[Notes]

e² studio Smart Configurator Plug-in,
Smart Configurator for RX

Outline

When using the e² studio Smart Configurator Plug-in and Smart Configurator for RX, note the following point.

1. Setting TPU0 channel of PWM Mode Timer

1. Setting TPU0 Channel of PWM Mode Timer

1.1 Applicable Products

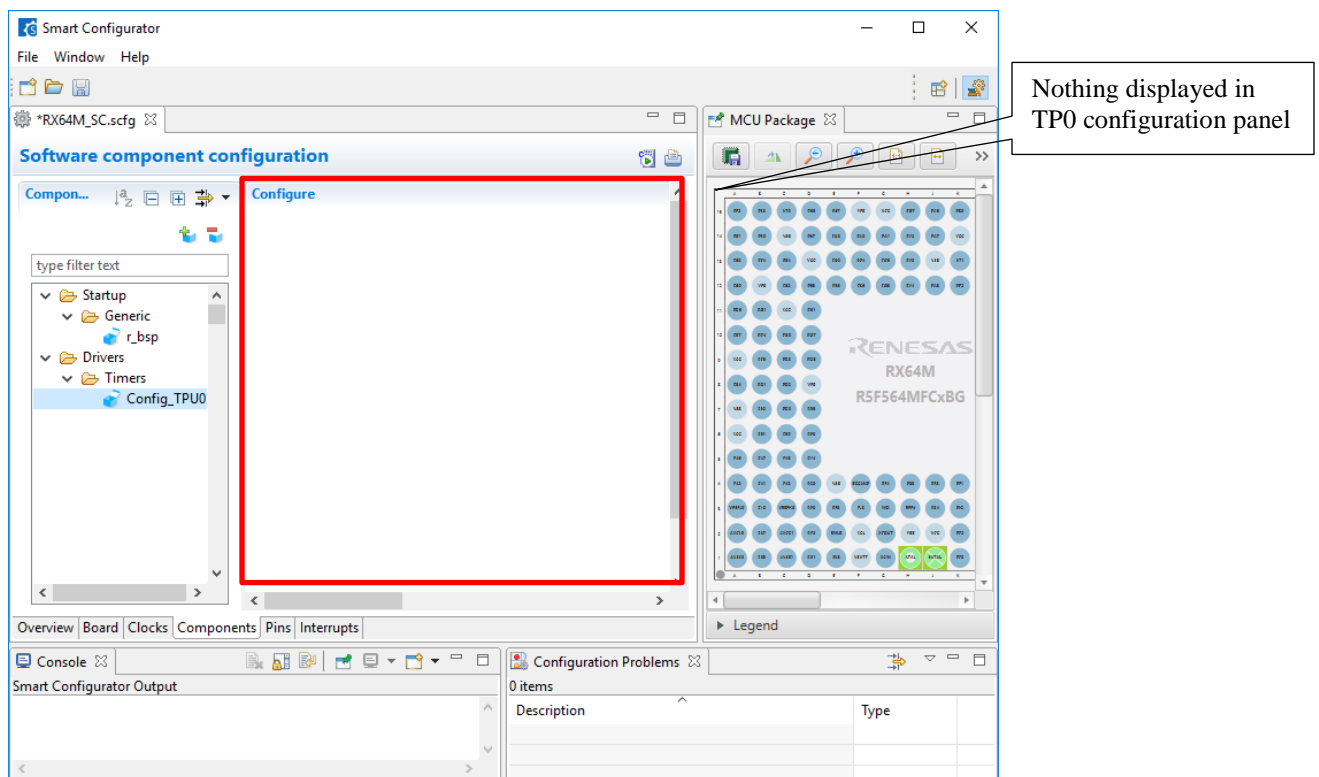
- RX Smart Configurator V1.2.0 or later
- e² studio V6.1.0 (Smart Configurator Plug-in V1.2.0) or later

1.2 Applicable MCUs

- RX family: RX65N/RX651, and RX64M groups

1.3 Details

When you select the TPU0 channel as a resource from the [Software component configuration]→ [Software component selection] screen→ [PWM mode timer], the configuration panel would not display. You can display the TPU0 configuration panel by adjusting the width of the window, however even if you specify the TPU0 in the setting, the different source code is output. For this reason, the correct source code cannot be output.



1.4 Workaround

There is no workaround for this problem. Create a source code by referring to other channels such as TPU1 of the PWM mode timer.

1.5 Schedule for Fixing the Problem

This problem will be fixed in a later version.

Revision History

Rev.	Date	Description	
		Page	Summary
1.00	Oct. 01, 2018	-	First edition issued

TOYOSU FORESIA, 3-2-24 Toyosu, Koto-ku, Tokyo 135-0061 Japan
 Renesas Electronics Corporation

■Inquiry

<https://www.renesas.com/contact/>

Renesas Electronics has used reasonable care in preparing the information included in this document, but Renesas Electronics does not warrant that such information is error free. Renesas Electronics assumes no liability whatsoever for any damages incurred by you resulting from errors in or omissions from the information included herein.

The past news contents have been based on information at the time of publication. Now changed or invalid information may be included.

The URLs in the Tool News also may be subject to change or become invalid without prior notice.

All trademarks and registered trademarks are the property of their respective owners.