

To our customers,

---

## Old Company Name in Catalogs and Other Documents

---

On April 1<sup>st</sup>, 2010, NEC Electronics Corporation merged with Renesas Technology Corporation, and Renesas Electronics Corporation took over all the business of both companies. Therefore, although the old company name remains in this document, it is a valid Renesas Electronics document. We appreciate your understanding.

Renesas Electronics website: <http://www.renesas.com>

April 1<sup>st</sup>, 2010  
Renesas Electronics Corporation

Issued by: Renesas Electronics Corporation (<http://www.renesas.com>)

Send any inquiries to <http://www.renesas.com/inquiry>.

HITACHI SEMICONDUCTOR TECHNICAL UPDATE

DATE	23 August 2000	No.	TN-SH7-246A/E
THEME	SH7750 Section23 Electrical Characteristics on SH7750 Series Hardware Manual		
CLASSIFICATION	<input type="checkbox"/> Spec. change <input type="checkbox"/> Limitation on Use <input checked="" type="checkbox"/> Supplement of Documents		
PRODUCT NAME	HD6417750, HD6417750S		
REFERENCE DOCUMENTS	SH7750 Series Hardware Manual	Effective Date: Eternity	
		Lot#: All	

1. Following Figure 23.13 of SH7750 series Hardware Manual(Section23 Electrical Characteristics) is changed.

1-1. 23.3 AC Characteristics  
23.3.2 Control Signal Timing  
Figure 23.13 is corrected as bellow.

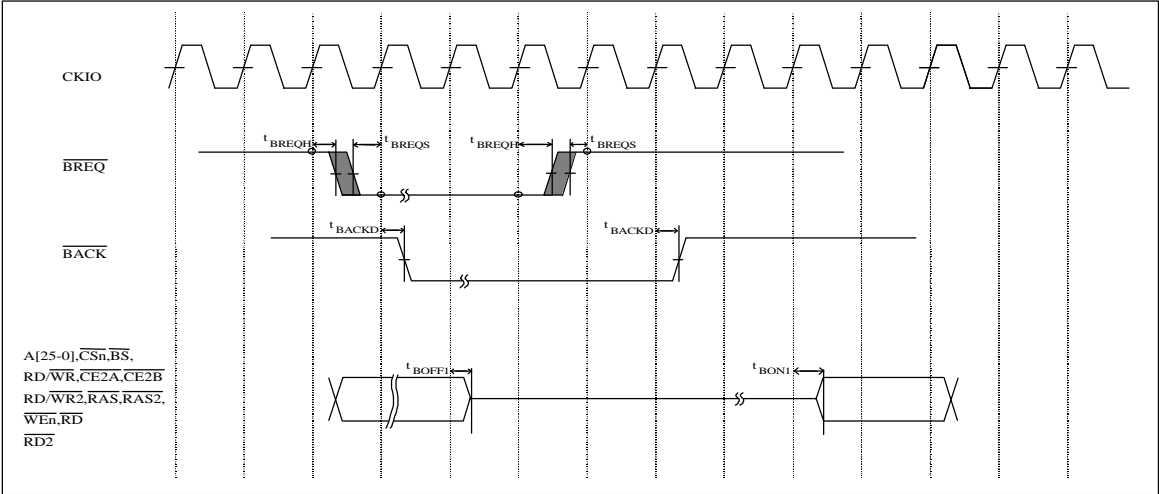


Figure 23.13 Control Signal Timing

# HITACHI MICROCOMPUTER TECHNICAL UPDATE

DATE	23 August 2000	No.	TN-SH7-247A/E
THEME	SH-4 Handling of Reserved Pin and CA pin		
CLASSIFICATION	<input type="checkbox"/> Spec change <input type="checkbox"/> Limitation on Use <input checked="" type="checkbox"/> Supplement of Documents		
PRODUCTNAME	HD6417750, HD6417750S, HD6417751	Lot No.etc.	All
REFERENCE DOCUMENTS	SH7750 series Hardware Manual	Rev.	EffectiveDate      Eternity
	SH7751 Hardware Manual	1 - 4	From

## 1. Contents

Reserved pin of the SH7750 must be pulled up to 3.3V as described in Pin functions table in Section 22. Reserved pin should be pulled up by the individual pull up resistance to reduce the effect from other signals.

When the CA pin of the SH7750S or SH7751 is pulled up, the individual pull up resistance should be used to reduce the effect from other signals.

Table. Pin name and Pin number of Reserved pin and CA pin

Product name	Package	Pin name	Pin number
HD6417750	BGA	Reserved	D17
HD6417750	QFP	Reserved	161
HD6417750S	BGA	CA	D17
HD6417750S	QFP	CA	161
HD6417751	QFP	CA	197