

To our customers,

---

## Old Company Name in Catalogs and Other Documents

---

On April 1<sup>st</sup>, 2010, NEC Electronics Corporation merged with Renesas Technology Corporation, and Renesas Electronics Corporation took over all the business of both companies. Therefore, although the old company name remains in this document, it is a valid Renesas Electronics document. We appreciate your understanding.

Renesas Electronics website: <http://www.renesas.com>

April 1<sup>st</sup>, 2010  
Renesas Electronics Corporation

Issued by: Renesas Electronics Corporation (<http://www.renesas.com>)

Send any inquiries to <http://www.renesas.com/inquiry>.

# RENESAS TECHNICAL UPDATE

Nippon Bldg., 2-6-2, Ohte-machi, Chiyoda-ku, Tokyo 100-0004, Japan  
Renesas Technology Corp.

Product Category	MPU&MCU		Document No.	TN-MC*-A012A/E	Rev.	1.0
Title	Note on QzROM Ordering		Information Category	Technical Notification		
Applicable Product	QzROM MCU (720 Family: 4283 Group, 4508 Group, 4509 Group)	Lot No.	Reference Document	-		
	740 Family: 7544 Group, 7545 Group, 3850 Group, 3858 Group, 3823 Group)	ALL				

## 1. Applicable Product

Bit	Group	Part Number
4-bit MCU	4283 Group	M34283G2-XXXGP
	4508 Group	M34508G4-XXXFP/GP, M34508G4H-XXXFP/GP
	4509 Group	M34509G4-XXXFP, M34509G4H-XXXFP
8-bit MCU	7544 Group	M37544G2A-XXXGP/SP
	7545 Group	M37545G8-XXXGP, M37545G6-XXXGP, M37545G4-XXXGP
	3850 Group	M38503G4A-XXXFP/SP
	3858 Group	M38588GC-XXXFP/SP
	3823 Group	M3823AGF-XXXFP/HP

## 2. Schedule

Starting date: July 4, 2005

## 3. Note

As for the QzROM shipped after writing, when the mask file converter MM (referred to as "MM") is used, the ROM option setup ("Mask option setup" represented in MM) is required.

Certainly specify the address and data in the table below on the mask option setup screen (see the following figure) when MM used.

If there is some problem\* with setup of ROM option, we cannot perform the ROM generating processing.

(\*: data except 00H or FFH is set, or ROM option is not set.)

In this case, we request you to resubmit ROM data.

Table Address and Data set in ROM Option

Address	4-bit MCU	8000H
	8-bit MCU	10H
Data	When protecting ROM is selected (common to 4-bit MCU/8-bit MCU)	00H
	When protecting ROM is not selected (Note) (common to 4-bit MCU/8-bit MCU)	FFH

Note: In this case, ROM data may be read by an outside party.

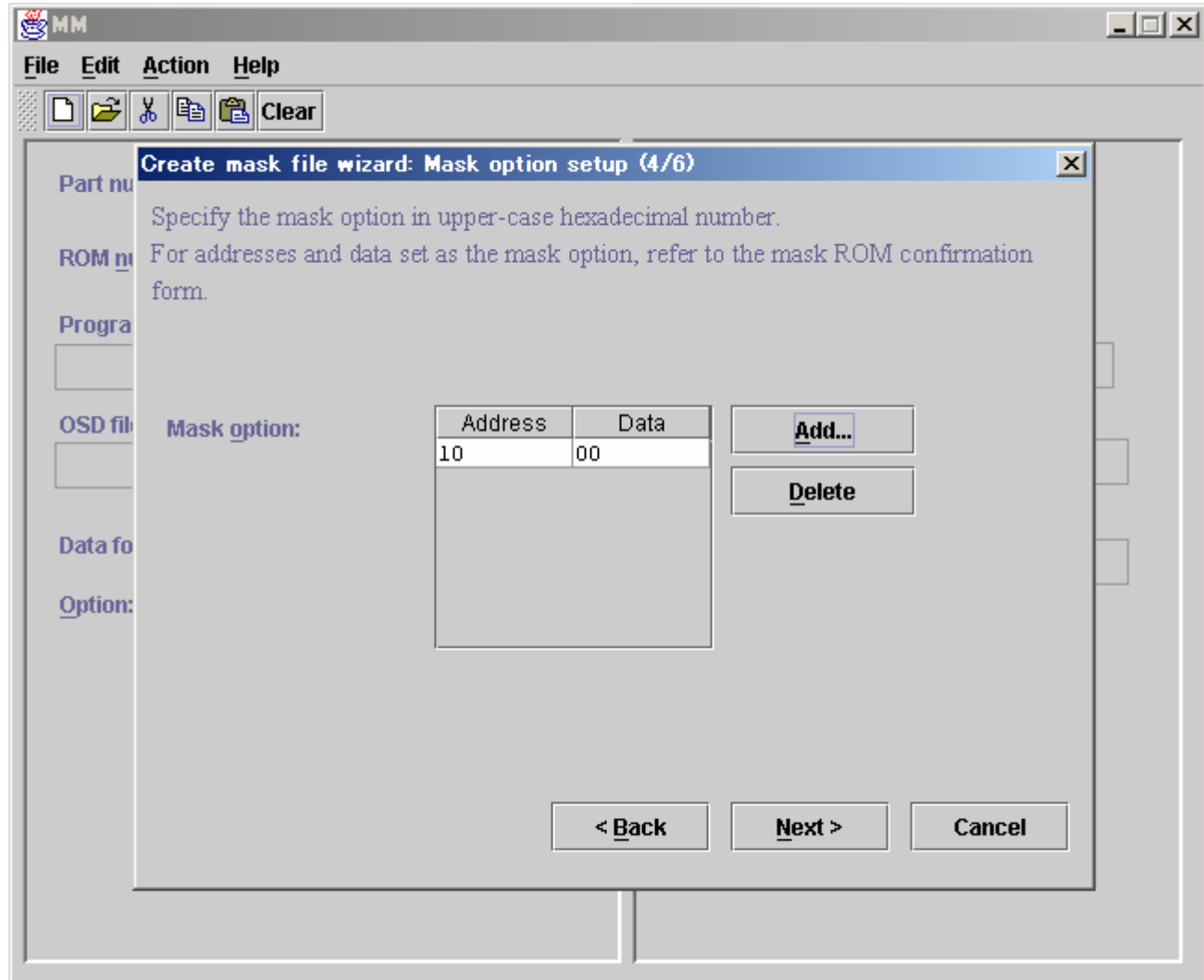


Figure Example of ROM option setup screen in MM