

RENESAS TECHNICAL UPDATE

TOYOSU FORESIA, 3-2-24, Toyosu, Koto-ku, Tokyo 135-0061, Japan
Renesas Electronics Corporation

Product Category	MPU/MCU		Document No.	TN-RX*-A0213A/E	Rev.	1.00
Title	Errata to the Package Code of 0.65-mm pitch 80-pin LQFP Package for RX66T Group and RX24T Group		Information Category	Technical Notification		
Applicable Product	RX66T Group, RX24T Group	Lot No.	Reference Document	RX66T Group User's Manual: Hardware Rev.1.10 (R01UH0749EJ0110) RX24T Group User's Manual: Hardware Rev.2.00 (R01UH0576EJ0200)		
		All				

This document describes a correction to the package code (RENESAS Code) of the 0.65-mm pitch 80-pin LQFP package in the User's Manual: Hardware for the applicable products stated above. Changes in the package dimensions that accompany this correction are also made.

1. Correction to the Package Code (RENESAS Code)

The package code of the 0.65-mm pitch 80-pin LQFP package used with the applicable products is corrected as follows.

Before correction

PLQP0080JA-~~A~~

After correction

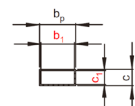
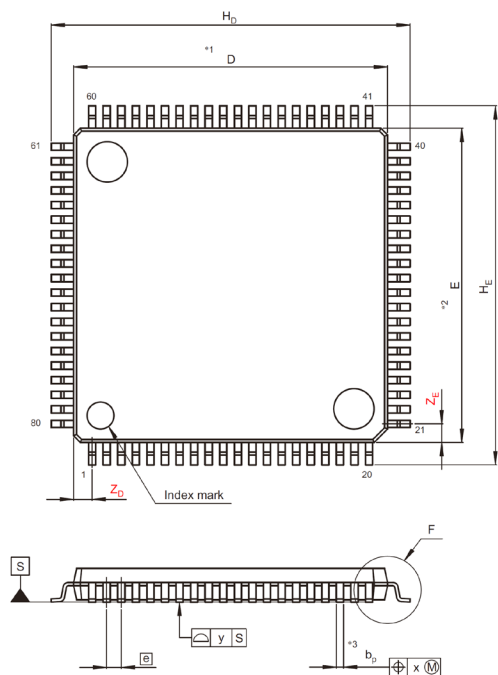
PLQP0080JA-~~A~~**B**

2. Changes in Package Dimensions

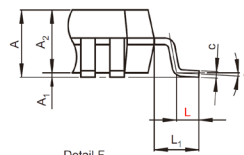
The package dimensions for the 0.65-mm pitch 80-pin LQFP package are also changed as shown in the following figures.

Before correction

JEITA Package Code	RENESAS Code	Previous Code	MASS[Typ.]
P-LQFP80-14x14-0.65	PLQP0080JA-A	FP-80W / FP-80WV	0.6g



Terminal cross section



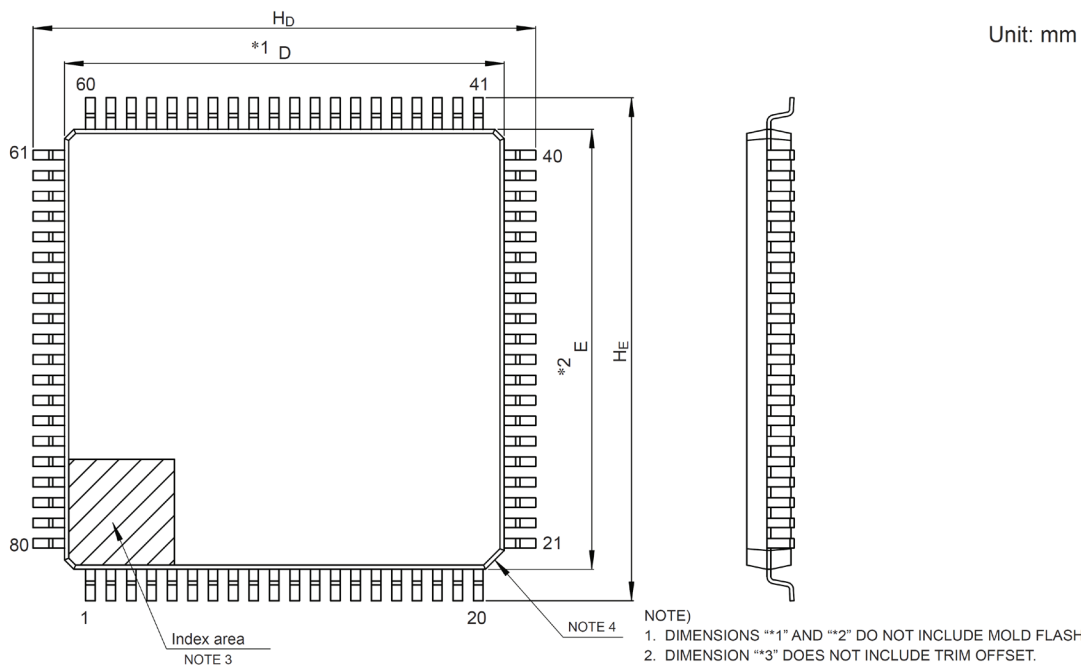
Detail F

NOTE)
 1. DIMENSIONS **1* AND **2* DO NOT INCLUDE MOLD FLASH.
 2. DIMENSION **3* DOES NOT INCLUDE TRIM OFFSET.

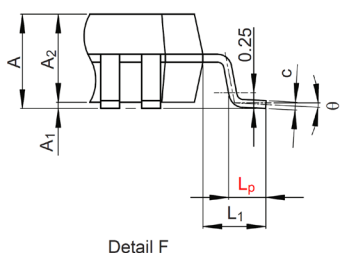
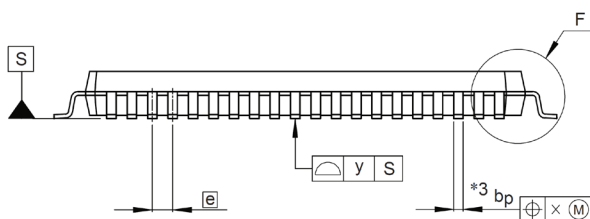
Reference Symbol	Dimension in Millimeters		
	Min	Nom	Max
D	13.9	14.0	14.1
E	13.9	14.0	14.1
A ₂	—	1.4	—
H _D	15.8	16.0	16.2
H _E	15.8	16.0	16.2
A	—	—	1.7
A ₁	0.05	0.1	0.15
b _p	0.27	0.32	0.37
b ₁	—	0.30	—
c	0.09	0.145	0.20
c ₁	—	0.125	—
θ	0°	—	8°
e	—	0.65	—
x	—	—	0.13
y	—	—	0.10
Z ₀	—	0.825	—
Z _E	—	0.825	—
L	0.35	0.5	0.65
L ₁	—	1.0	—

After correction

JEITA Package Code	RENESAS Code	Previous Code	MASS (Typ) [g]
P-LQFP80-14x14-0.65	PLQP0080JA-B	—	0.6



- NOTE)
1. DIMENSIONS **1" AND **2" DO NOT INCLUDE MOLD FLASH.
 2. DIMENSION **3" DOES NOT INCLUDE TRIM OFFSET.
 3. PIN 1 VISUAL INDEX FEATURE MAY VARY, BUT MUST BE LOCATED WITHIN THE HATCHED AREA.
 4. CHAMFERS AT CORNERS ARE OPTIONAL, SIZE MAY VARY.



Reference Symbol	Dimensions in millimeters		
	Min	Nom	Max
D	13.9	14.0	14.1
E	13.9	14.0	14.1
A ₂	—	1.4	—
H _D	15.8	16.0	16.2
H _E	15.8	16.0	16.2
A	—	—	1.7
A ₁	0.05	—	0.15
b _p	0.22	0.30	0.38
c	0.09	—	0.20
θ	0°	3.5°	8°
e	—	0.65	—
x	—	—	0.13
y	—	—	0.10
L _p	0.45	0.6	0.75
L ₁	—	1.0	—