

RENESAS TECHNICAL UPDATE

1753, Shimonumabe, Nakahara-ku, Kawasaki-shi, Kanagawa 211-8668 Japan
Renesas Electronics Corporation

| | | | | | | |
|--------------------|---|---------|----------------------|---|------|------|
| Product Category | MPU & MCU | | Document No. | TN-RX*-A111A/E | Rev. | 1.00 |
| Title | Corrections to User's Manual regarding the FASR.EXS bit for the Flash Memory in the RX111 Group | | Information Category | Technical Notification | | |
| Applicable Product | RX111 Group | Lot No. | Reference Document | RX111 Group User's Manual: Hardware Rev.1.10 (R01UH0365EJ0109) Specification Changes to Improve the Products in the RX111 Group (TN-RX*-A110A/E) Corrections to Descriptions for the Flash Memory in the RX111 Group User's Manual (TN-RX*-A109A/E) | | |
| | | All | | | | |

This document describes corrections to the description for the FASR.EXS bit in section 35. Flash Memory of RX111 Group User's Manual: Hardware Rev.1.10.

• Page 1104 of 1243

Description for the EXS bit of 35.4.8 Flash Area Select Register (FASR) is corrected as follows:

Before correction

Set this bit to 1 **when programming** the extra area **using the FEXCR register**.

Set this bit to 0 **when not programming** the extra area.

After correction

Set this bit to 1 **before issuing a software command (unique ID read, start-up area information program, or access window information program)** for the extra area. Set this bit to 0 **before issuing a software command (program, block erase, or blank check)** for the user area.

After issuing a software command, do not change the value until changing it for issuing the next software command.

•Page 1125 of 1243

Figure 35.10 in (3) Programming and Erasure Procedures of 35.7.3 Software Command Usage is corrected as follows:

Before correction

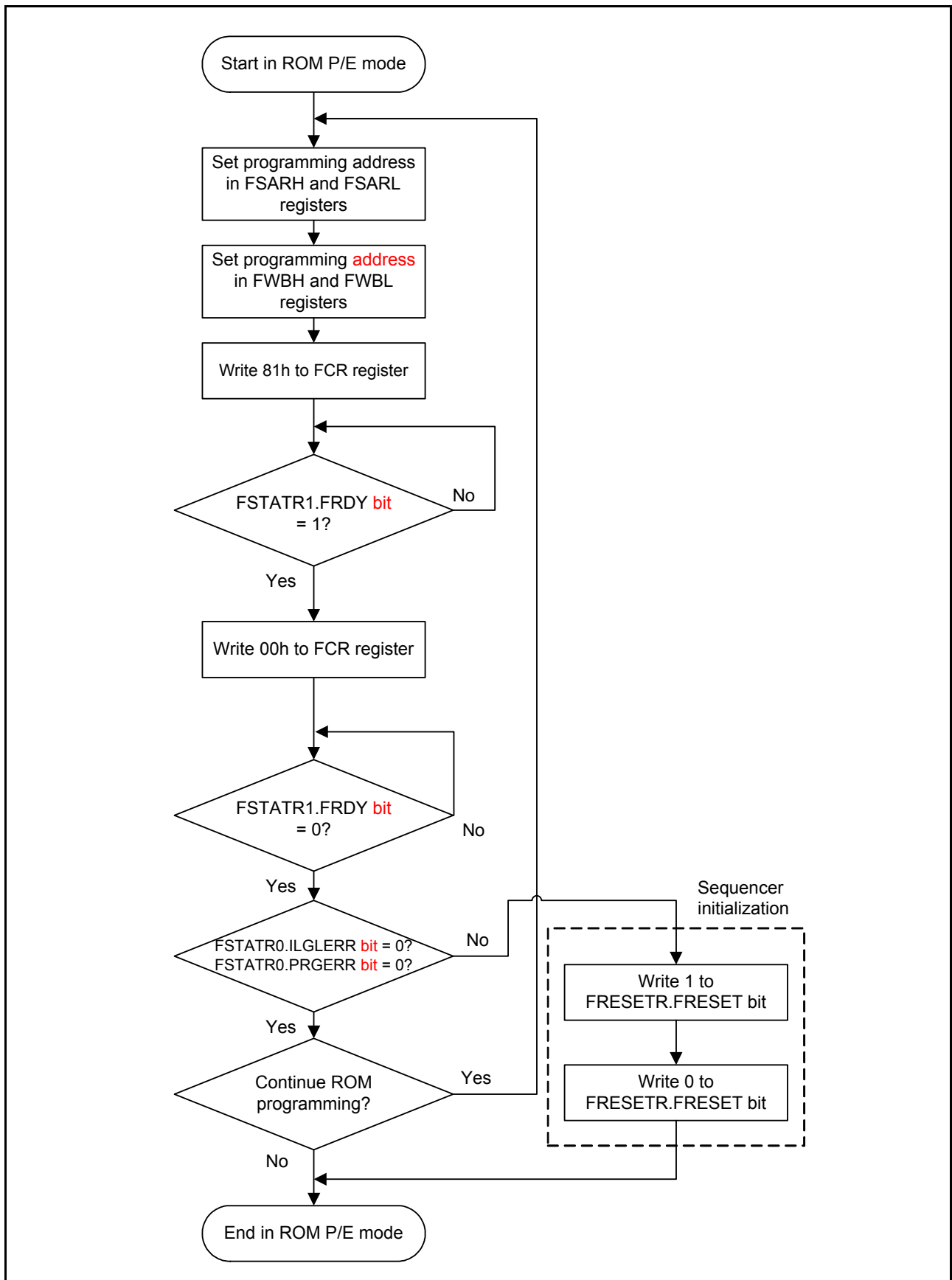


Figure 35.10 ROM Programming Procedure

After correction

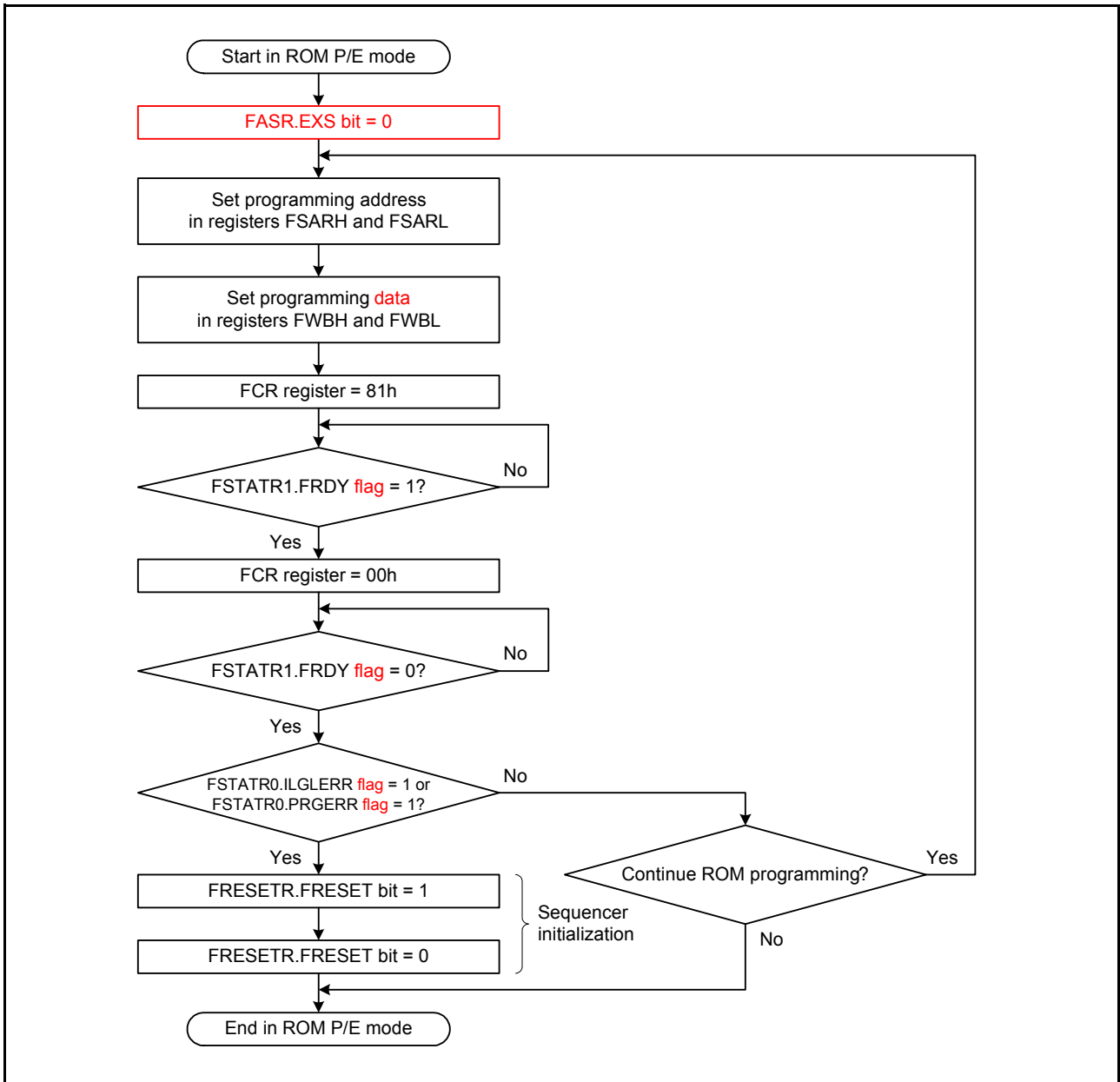


Figure 35.10 Procedure to Issue the Program Command for the ROM

•Page 1126 of 1243

Figure 35.11 in (3) Programming and Erasure Procedures of 35.7.3 Software Command Usage is corrected as follows:

Before correction

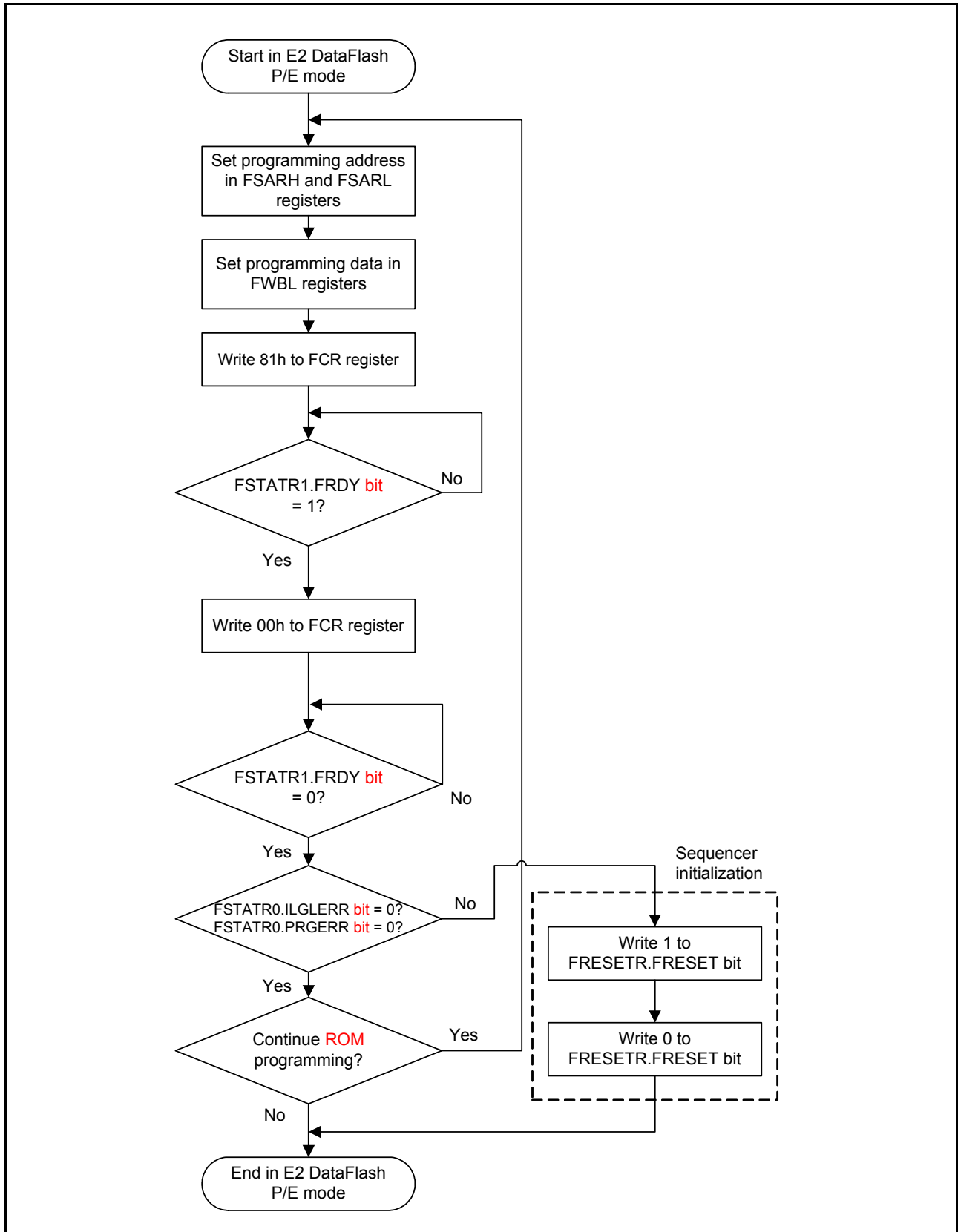


Figure 35.11 E2 DataFlash Programming Procedure

After correction

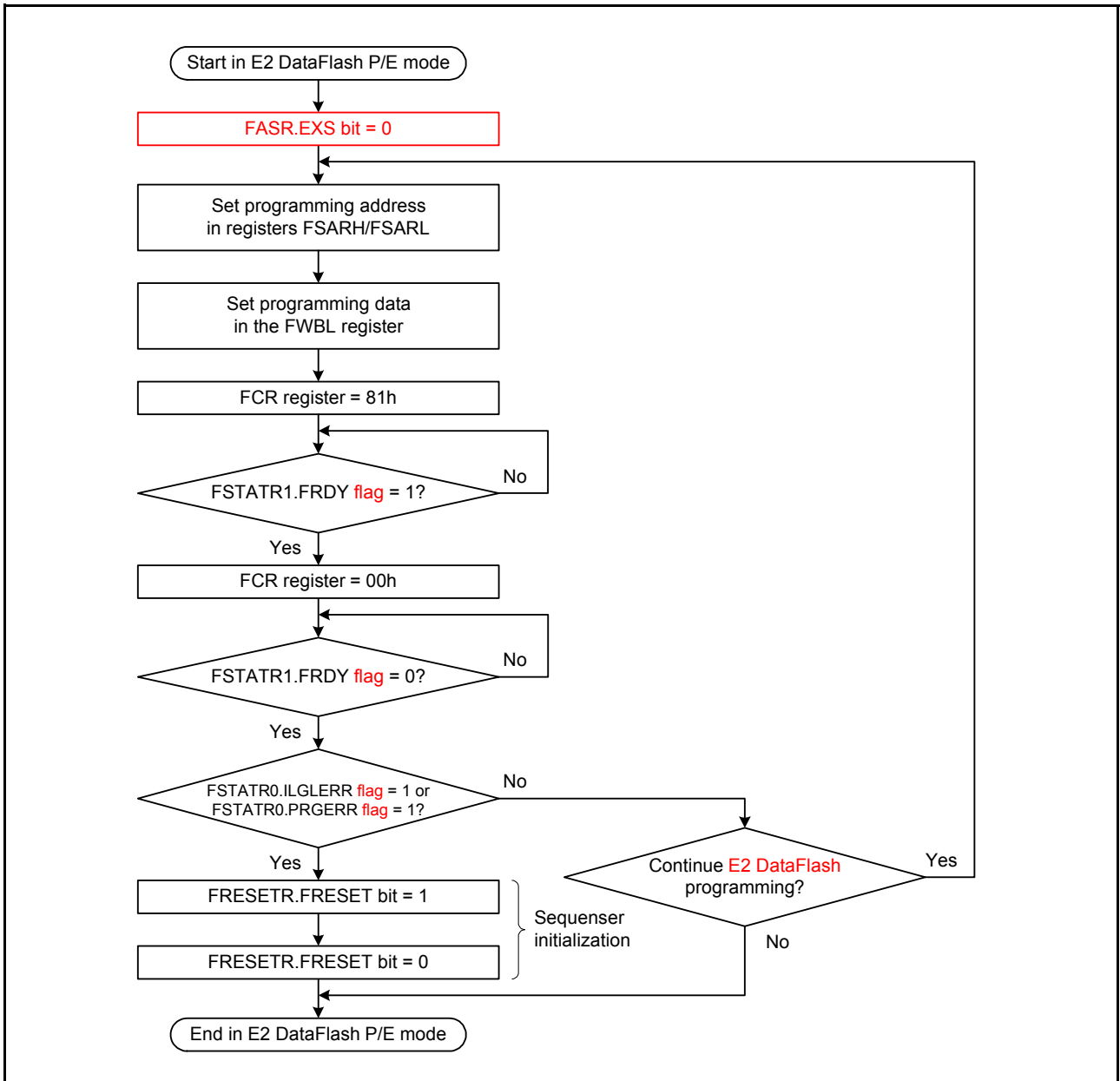


Figure 35.11 Procedure to Issue the Program Command for the E2 DataFlash

•Page 1127 of 1243

Figure 35.12 in (3) Programming and Erasure Procedures of 35.7.3 Software Command Usage is corrected as follows:

Before correction

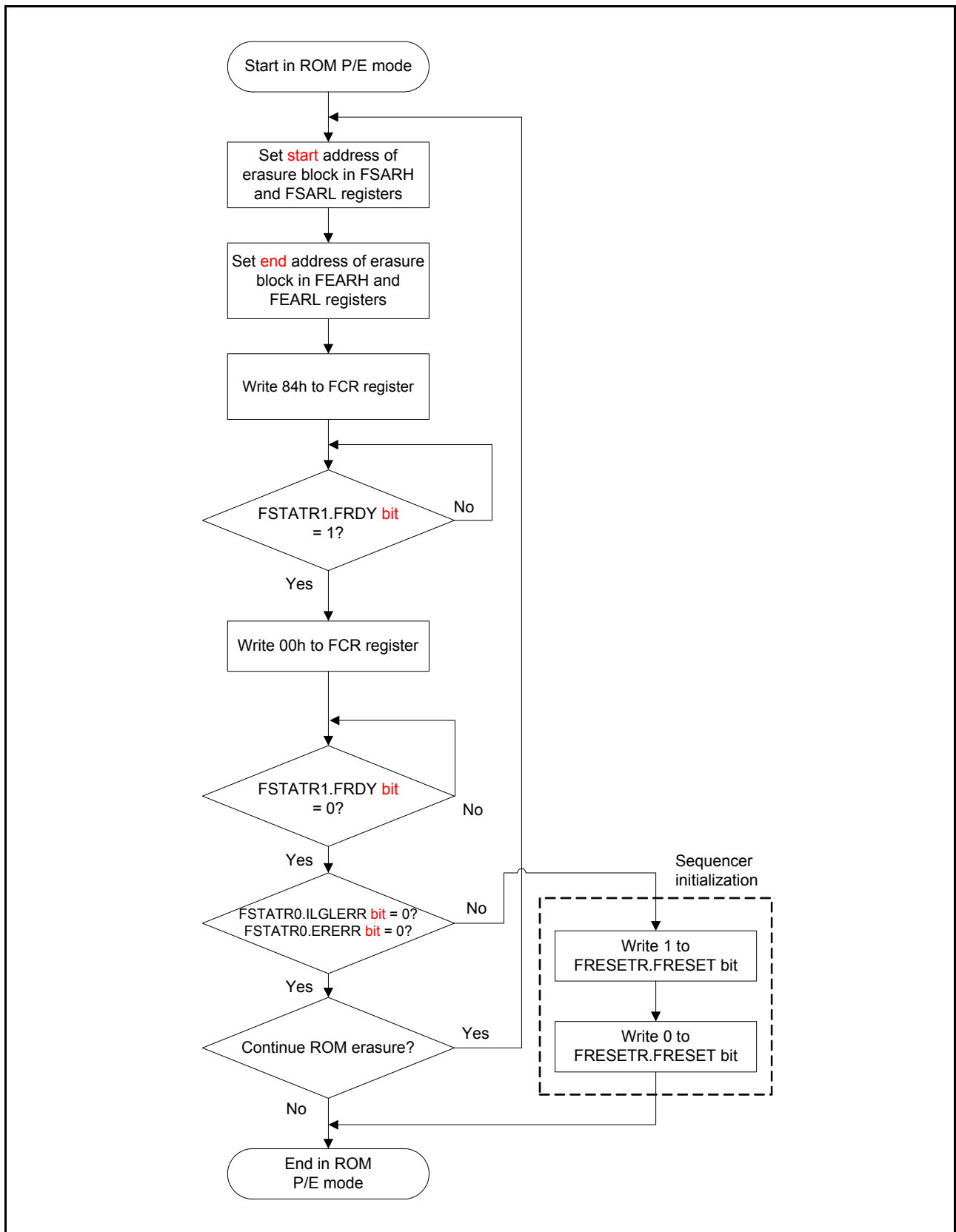


Figure 35.12 ROM Block Erase Procedure

After correction

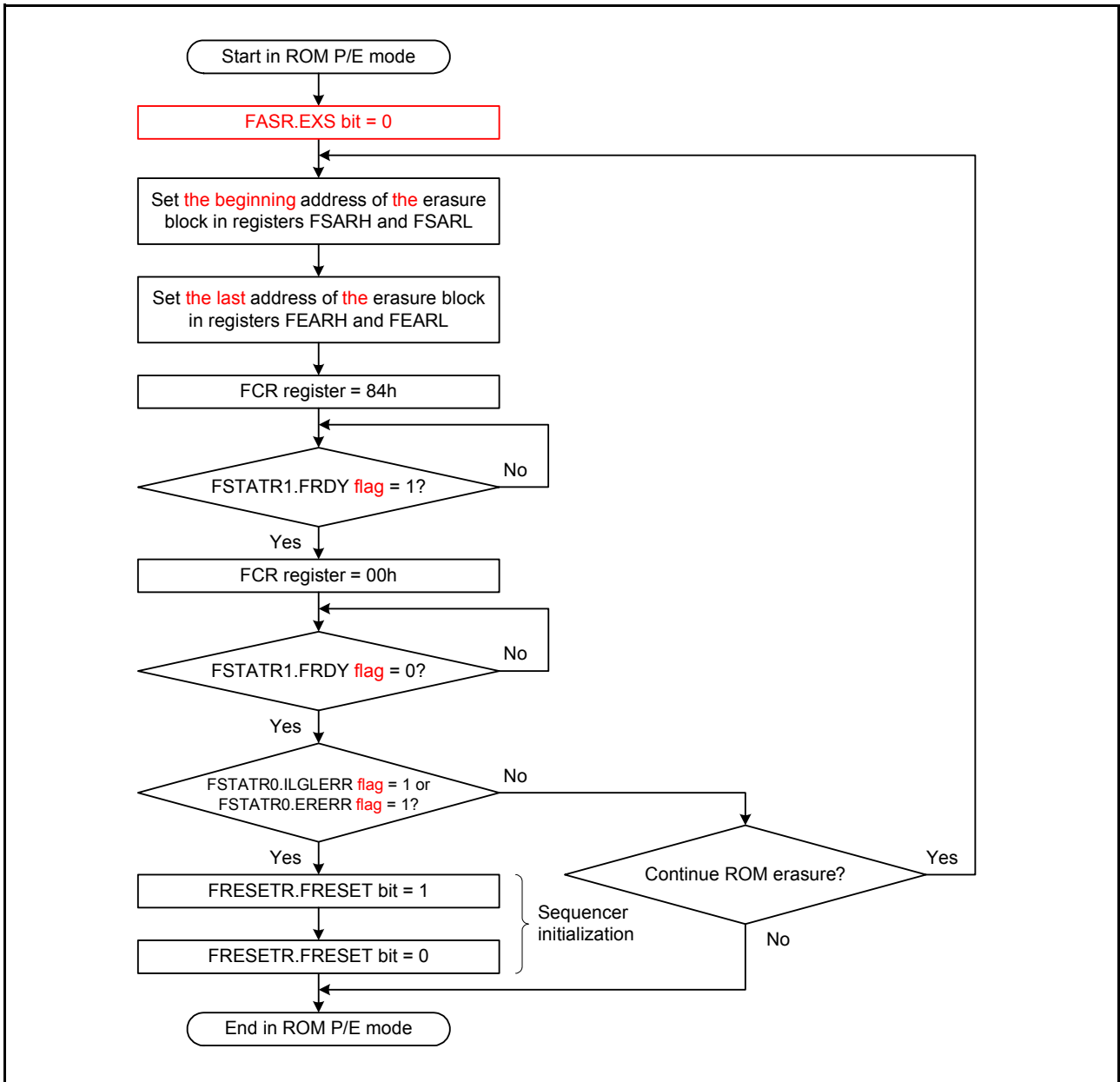


Figure 35.12 Procedure to Issue the Block Erase Command for the ROM

•Page 1128 of 1243

Figure 35.13 in (3) Programming and Erasure Procedures of 35.7.3 Software Command Usage is corrected as follows:

Before correction

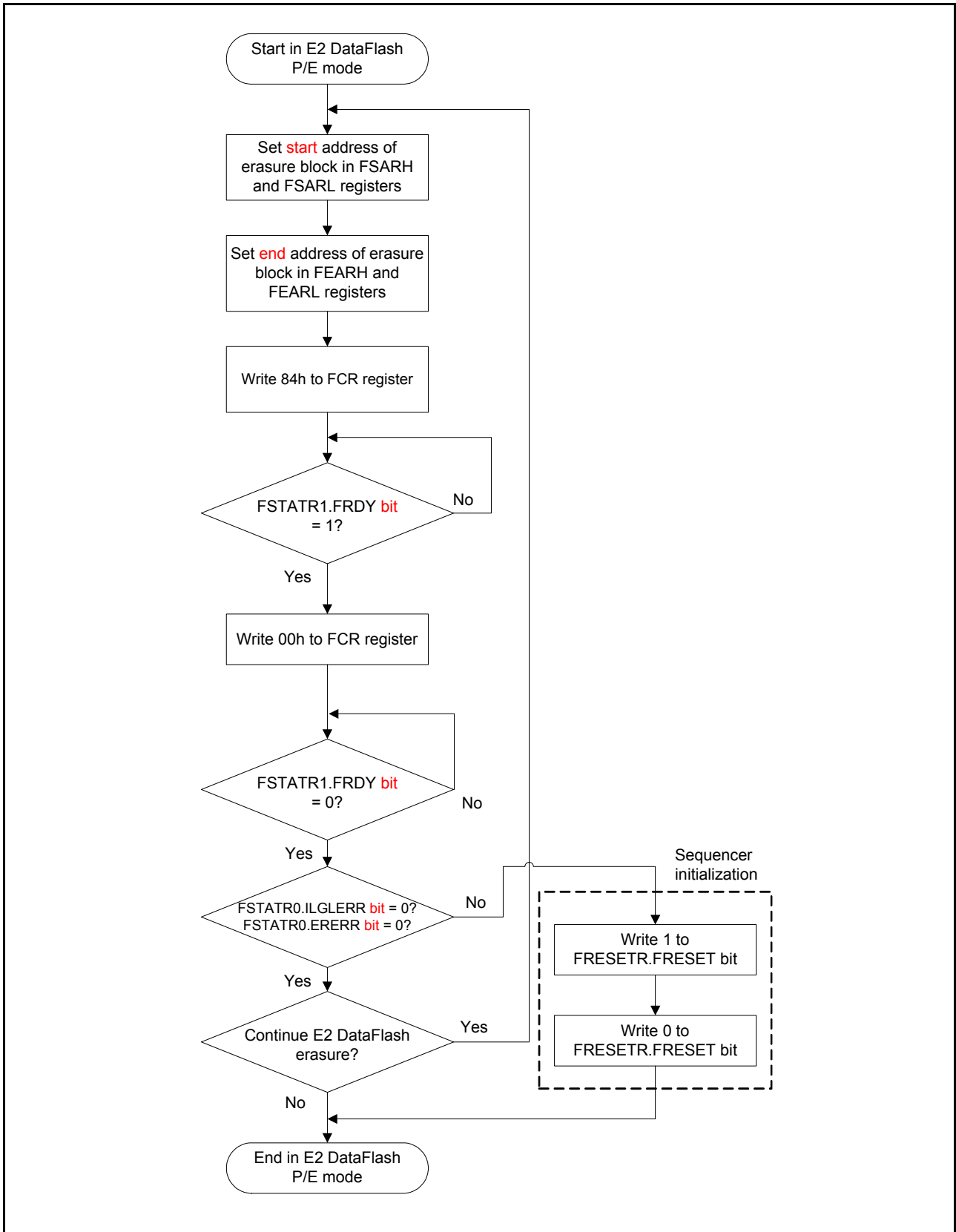


Figure 35.13 E2 DataFlash Block Erase Procedure

After correction

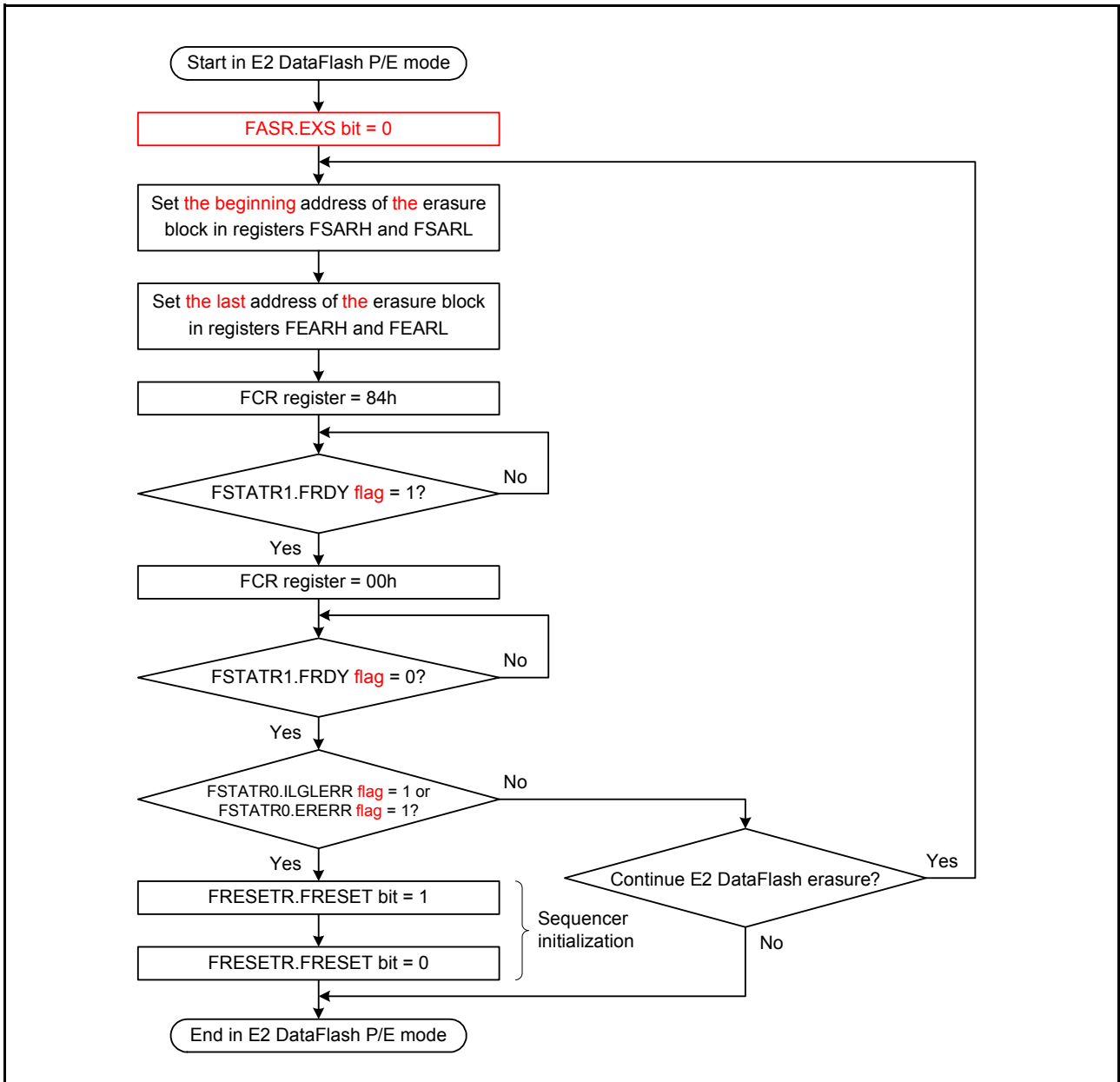


Figure 35.13 Procedure to Issue the Block Erase Command for the E2 DataFlash

•Page 1129 of 1243

Figure 35.14 in (3) Programming and Erasure Procedures of 35.7.3 Software Command Usage is corrected as follows:

Before correction

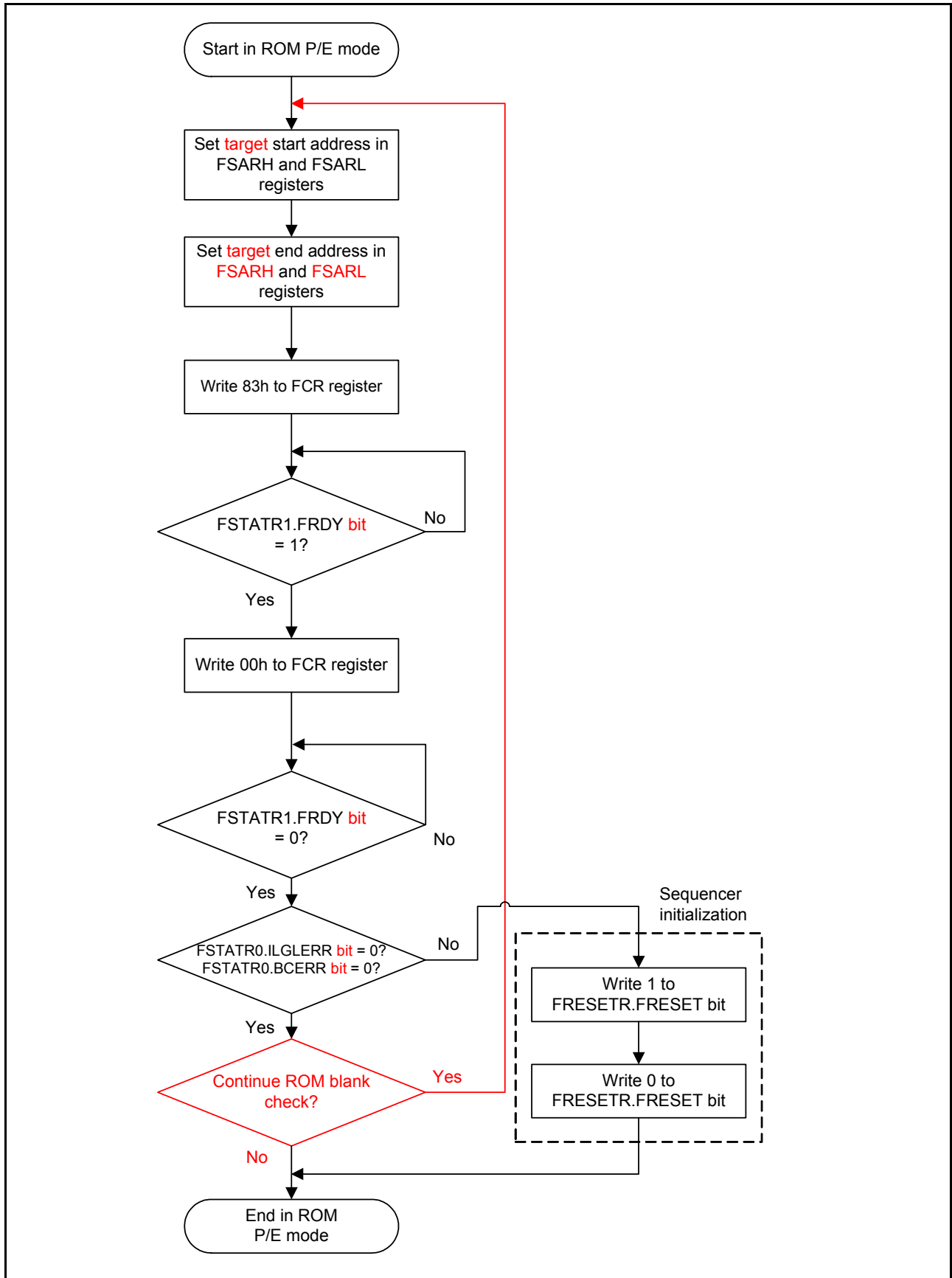


Figure 35.14 ROM Blank Check Procedure

After correction

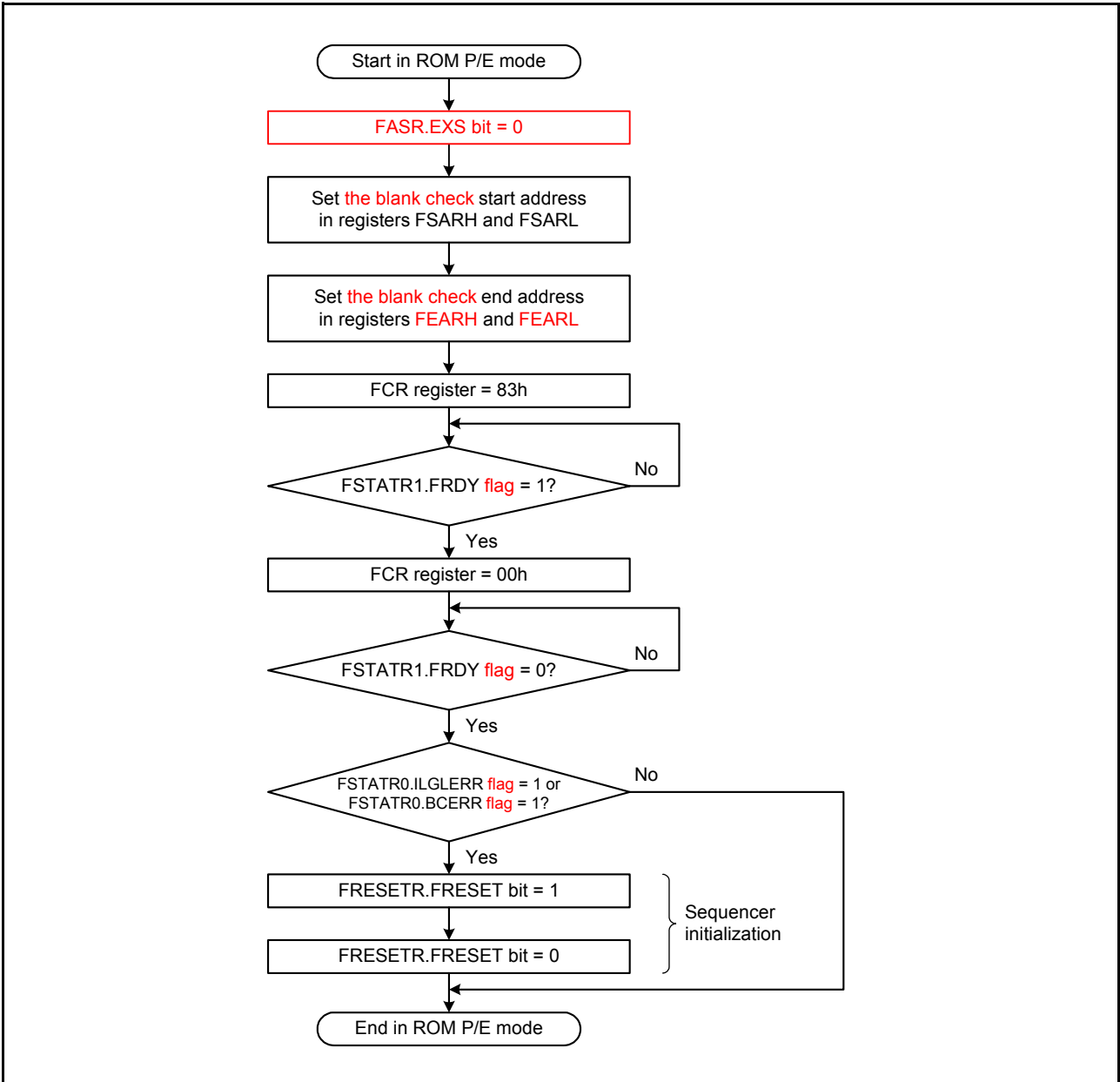


Figure 35.14 Procedure to Issue the Blank Check Command for the ROM

•Page 1130 of 1243

Figure 35.15 in (3) Programming and Erasure Procedures of 35.7.3 Software Command Usage is corrected as follows:

Before correction

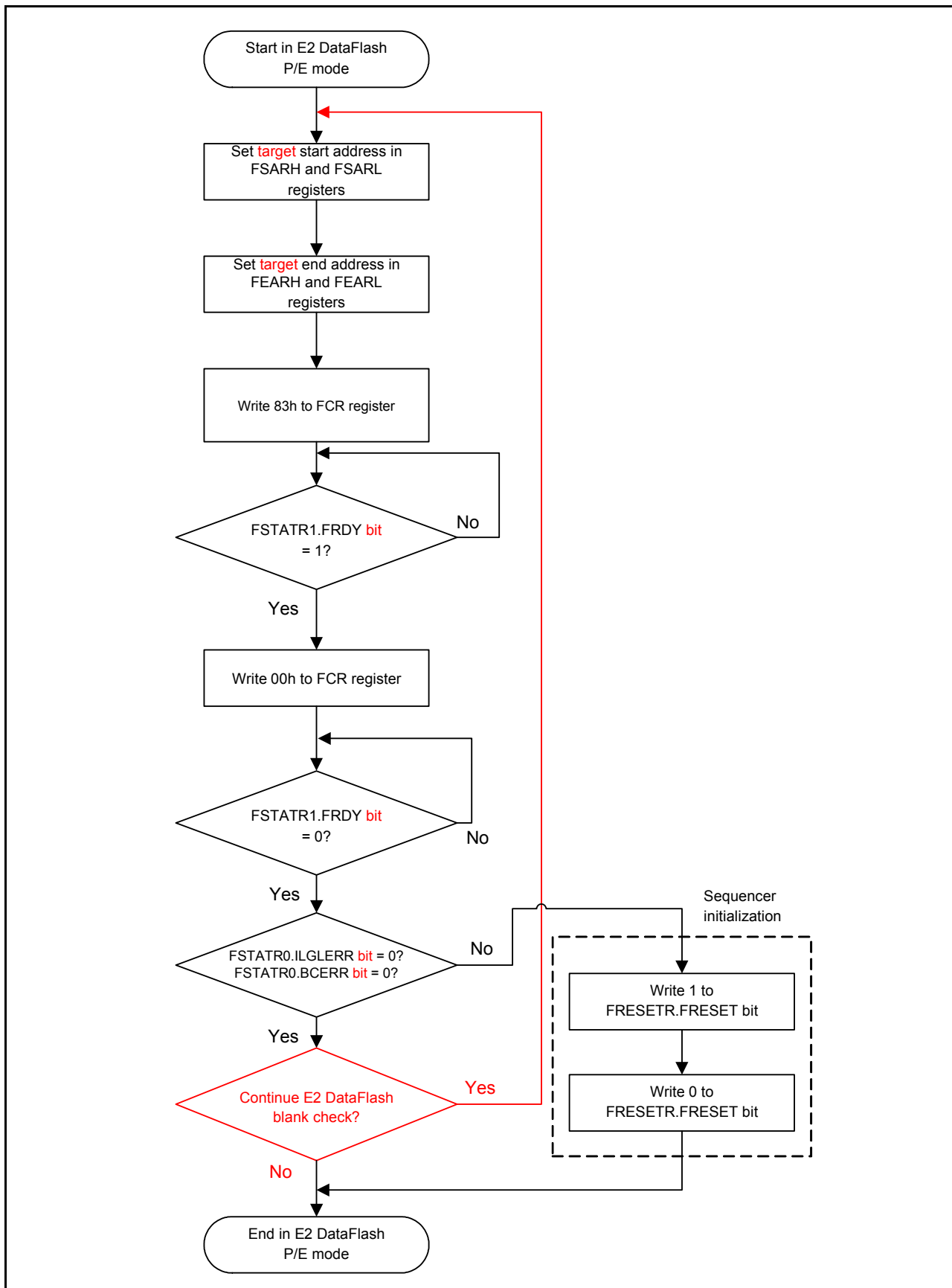


Figure 35.15 E2 DataFlash Blank Check Procedure

After correction

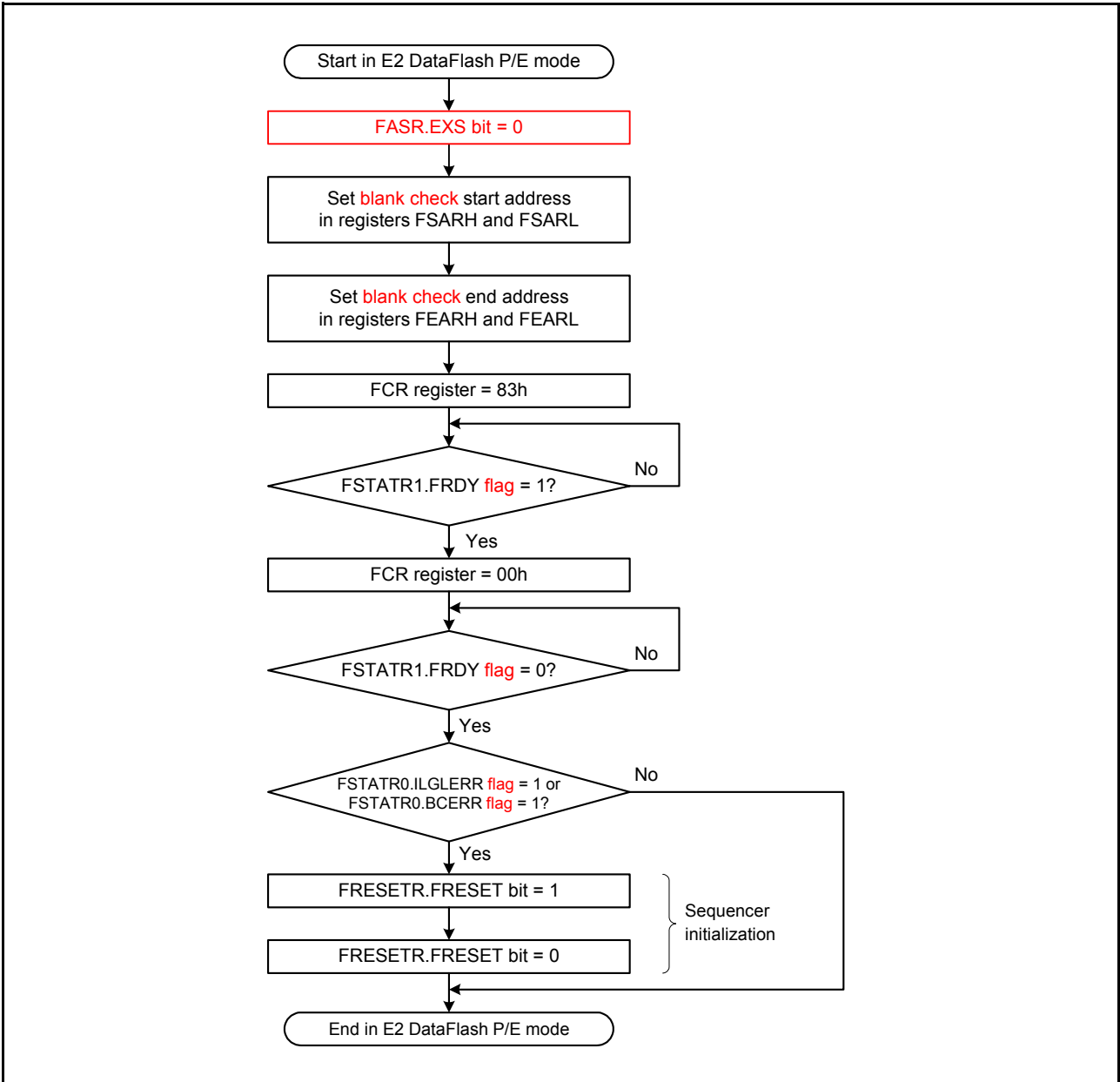


Figure 35.15 Procedure to Issue the Blank Check Command for the E2 DataFlash

•Page 1131 of 1243

Figure 35.16 in (4) Start-Up Area Information Program/Access Window Information Program of 35.7.3 Software Command Usage is corrected as follows:

Before correction

Figure 35.16 is a simple flowchart of the procedure for the start-up area information program/access window information program.

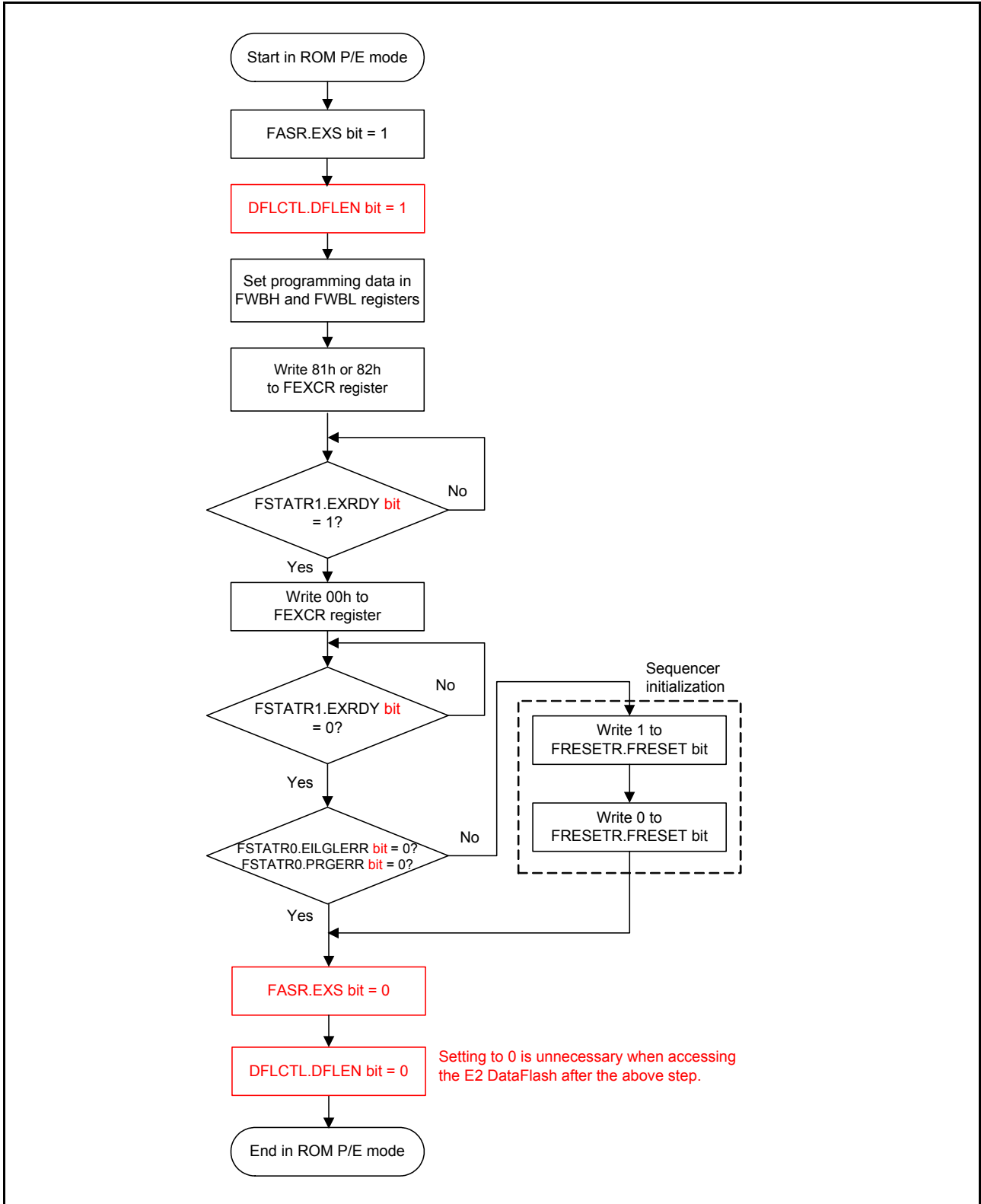


Figure 35.16 Simple Flowchart of the Procedure for the Start-Up Area Information Program/Access Window Information Program

After correction

Figure 35.16 shows the procedure to issue the start-up area information program command and access window information program command. When the sequencer has directly entered ROM/PE mode from E2 DataFlash access disabled mode, set the DFLCTL.DFLEN bit to 1 at the beginning of the procedure.

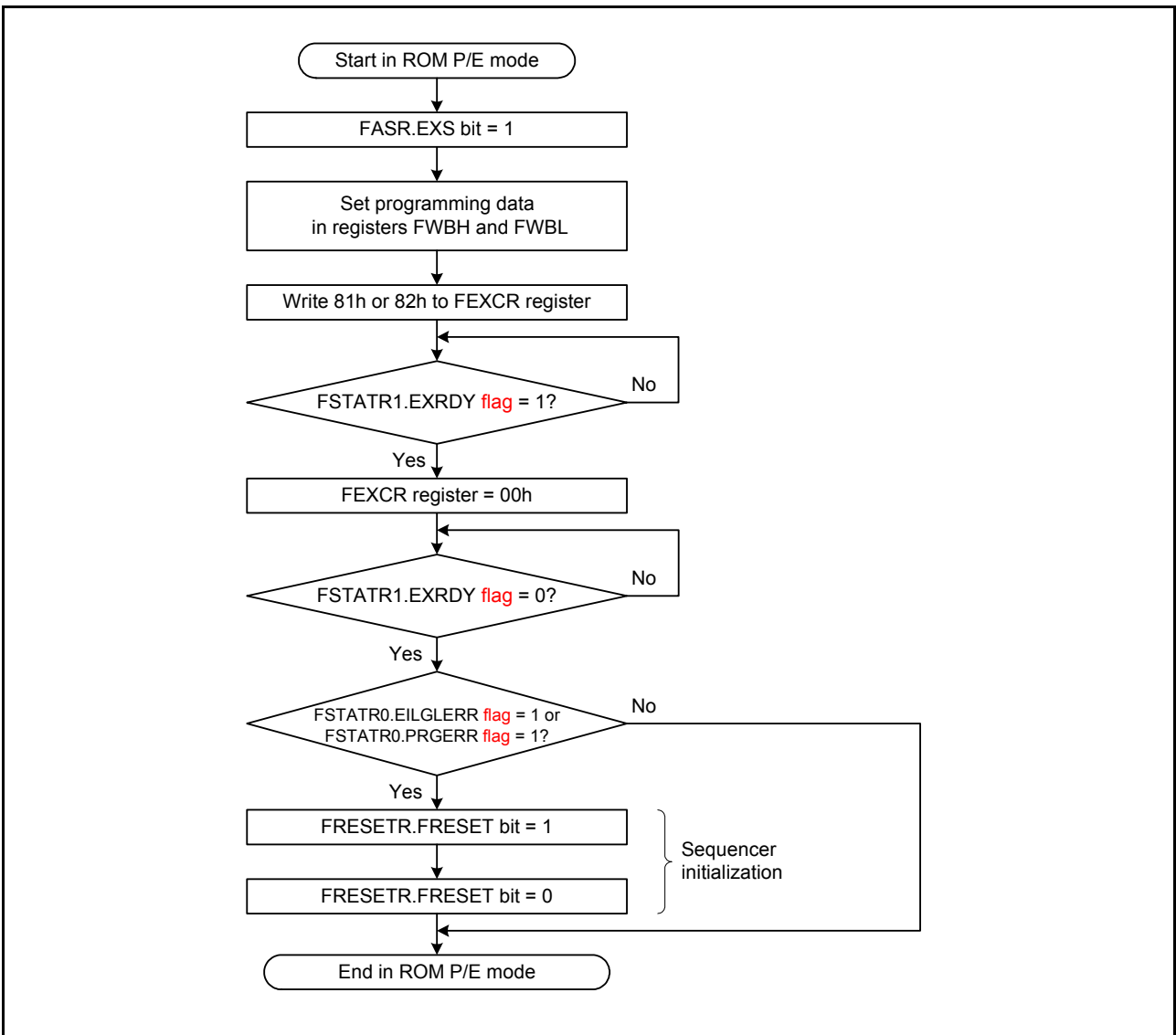


Figure 35.16 Procedure to Issue the Start-Up Area Information Program Command/Access Window Information Program Command