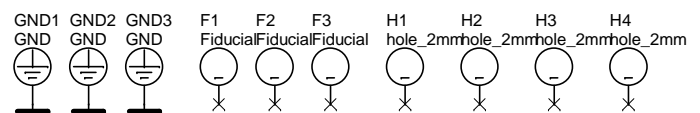
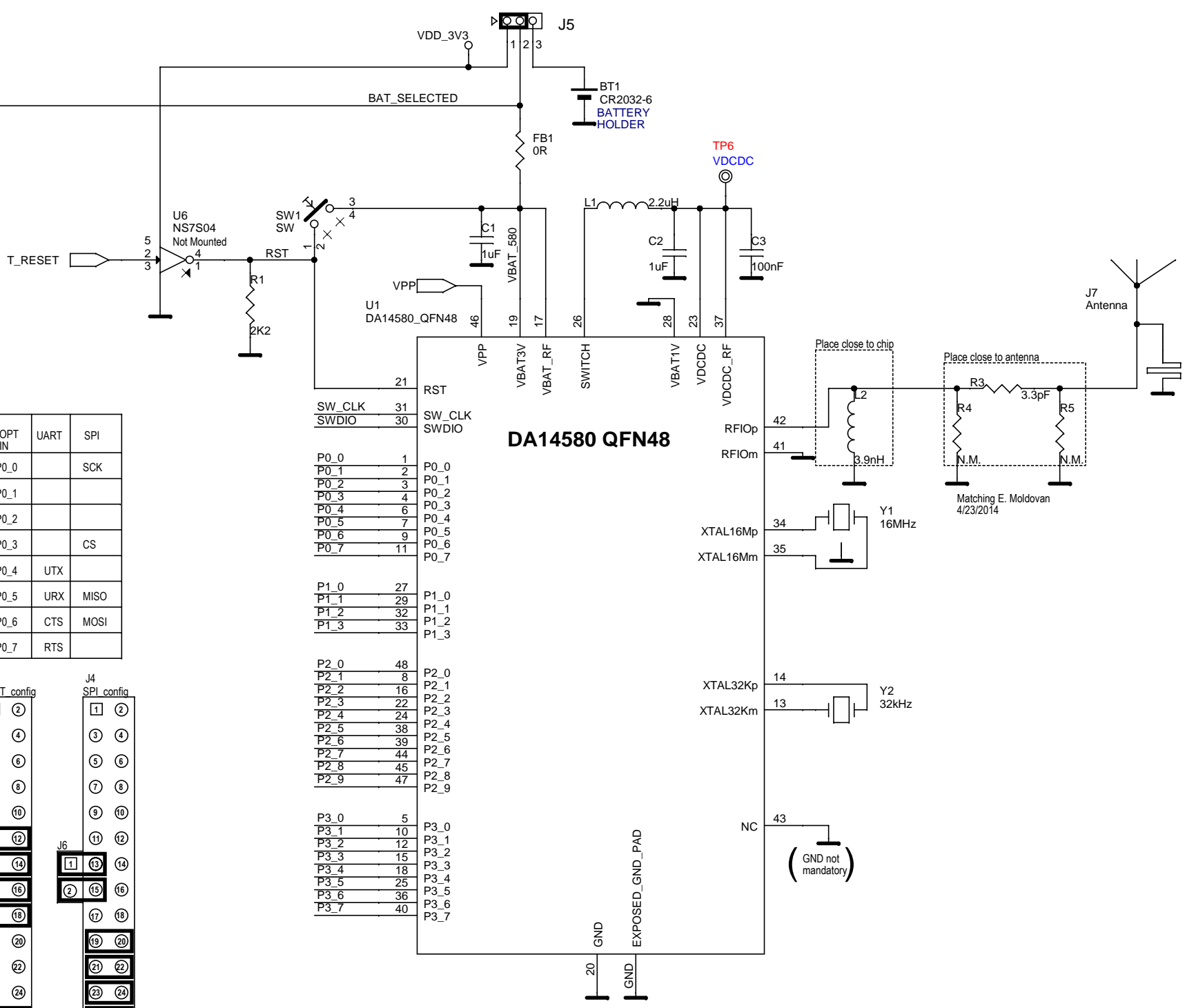
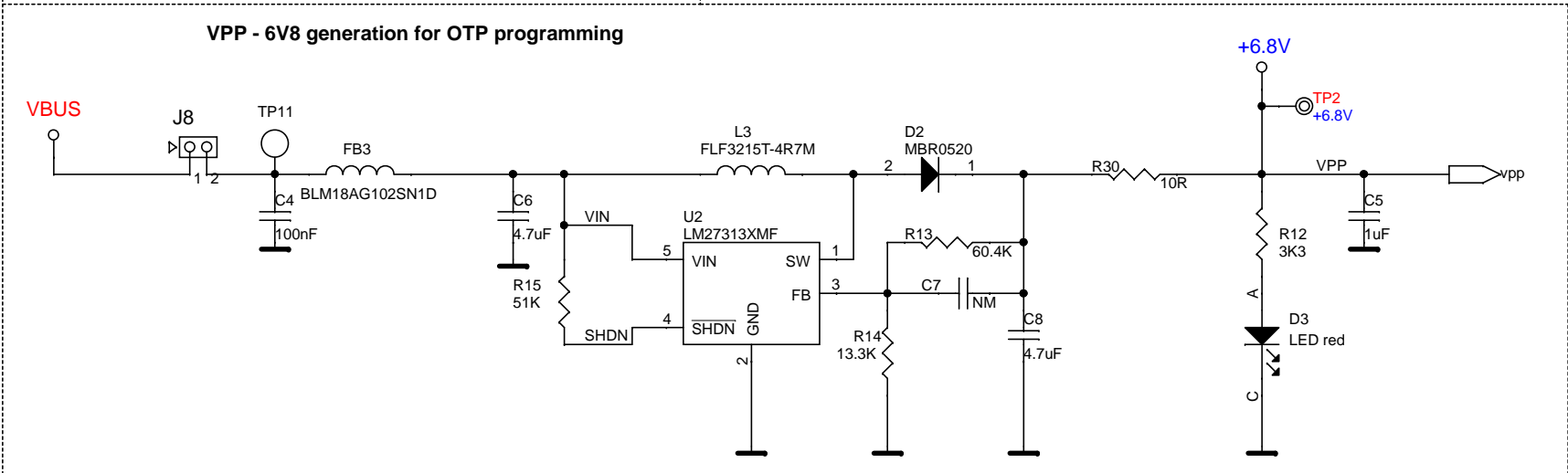
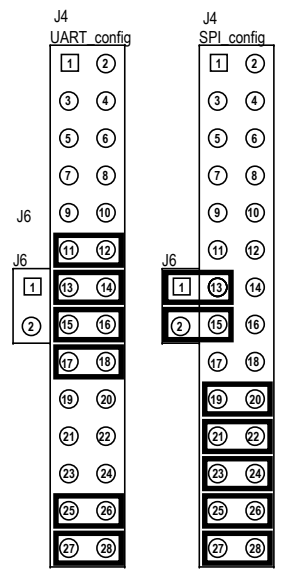


| PORT PIN | UART | SPI |
|----------|------|------|
| P0_0 | | SCK |
| P0_1 | | |
| P0_2 | | |
| P0_3 | | CS |
| P0_4 | UTX | |
| P0_5 | URX | MISO |
| P0_6 | CTS | MOSI |
| P0_7 | RTS | |



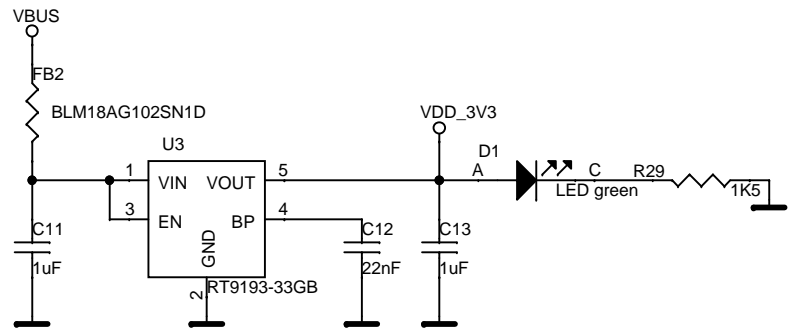
dialog
SEMICONDUCTOR

Dialog Semiconductor
Het Zuiderkruis 53
5215 MV 's-Hertogenbosch
tel. (+31) 73 6408822
fax. (+31) 73 6408823

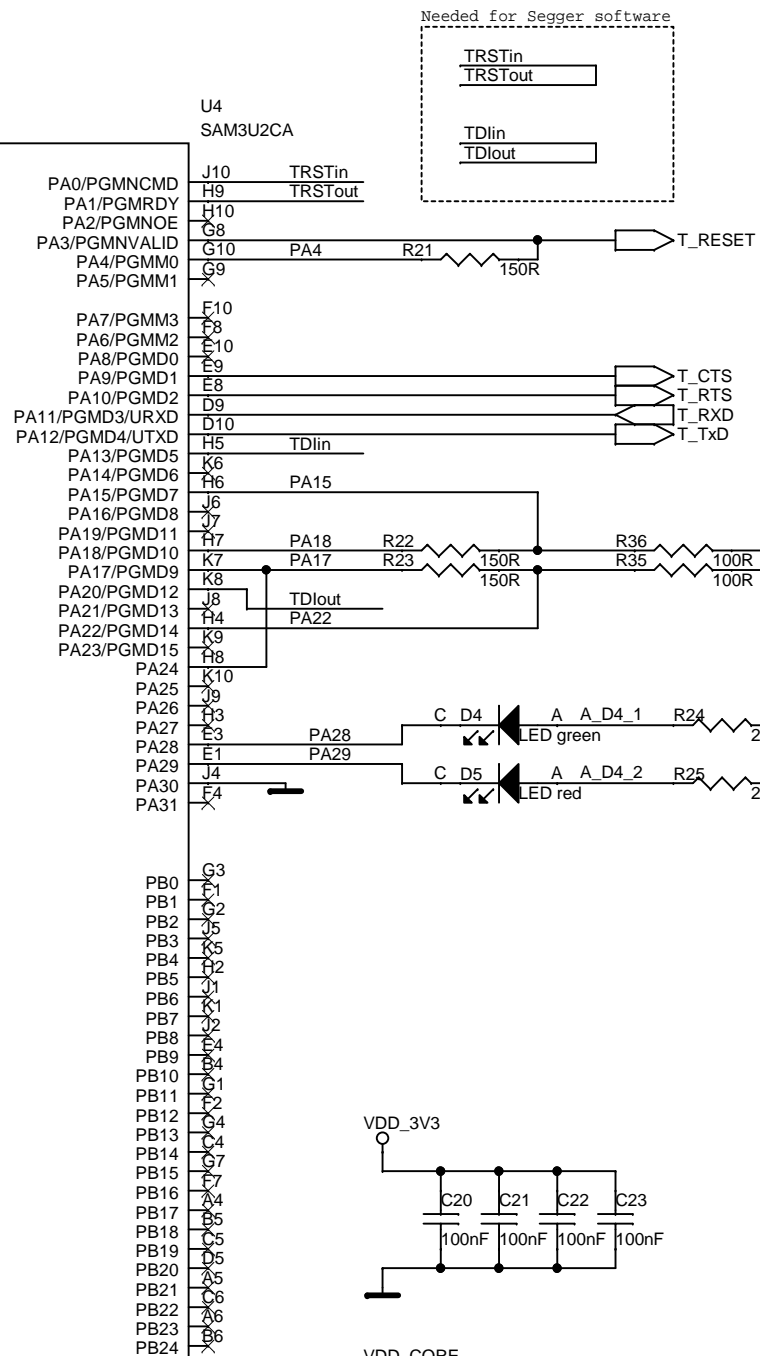
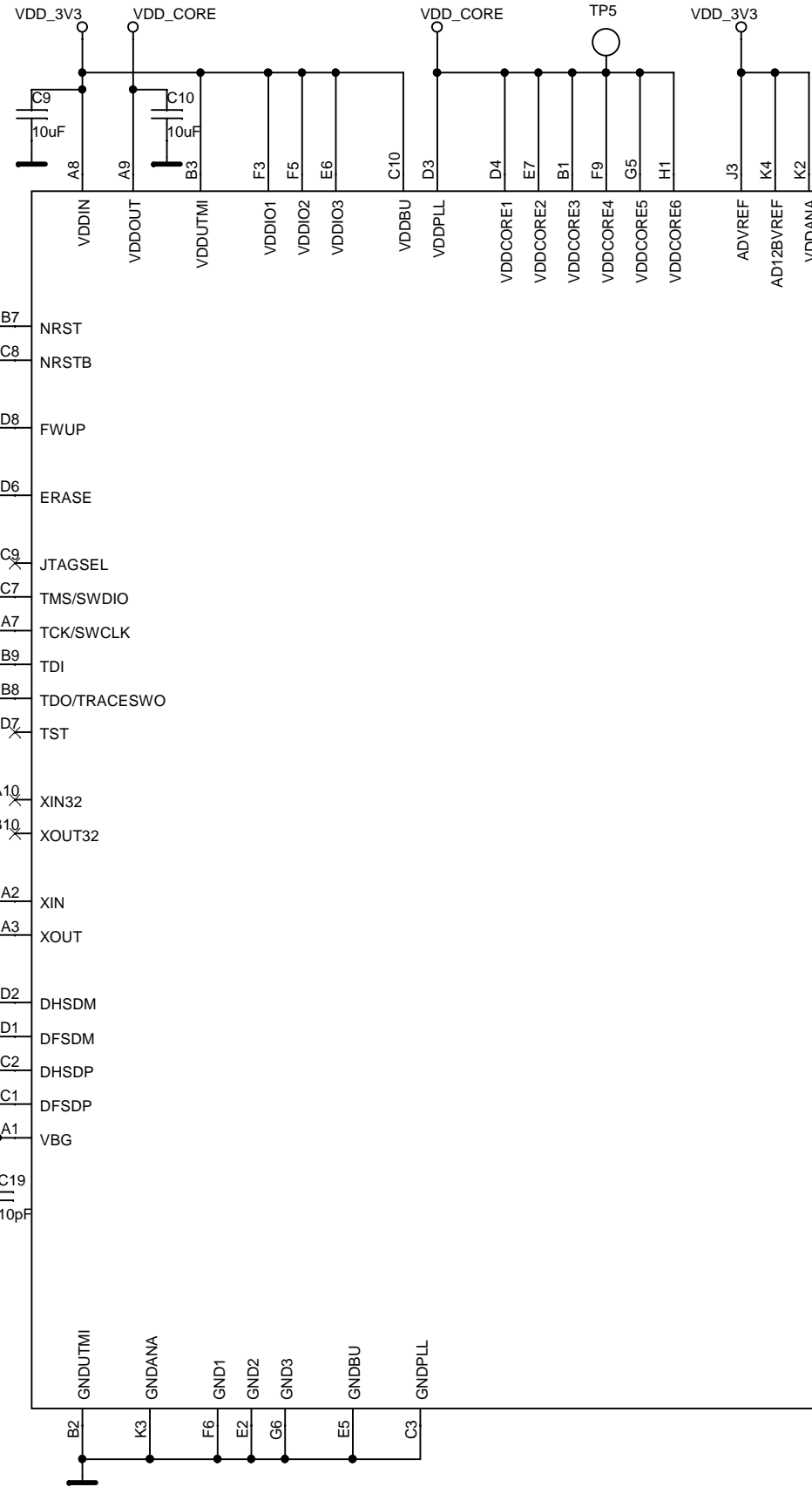
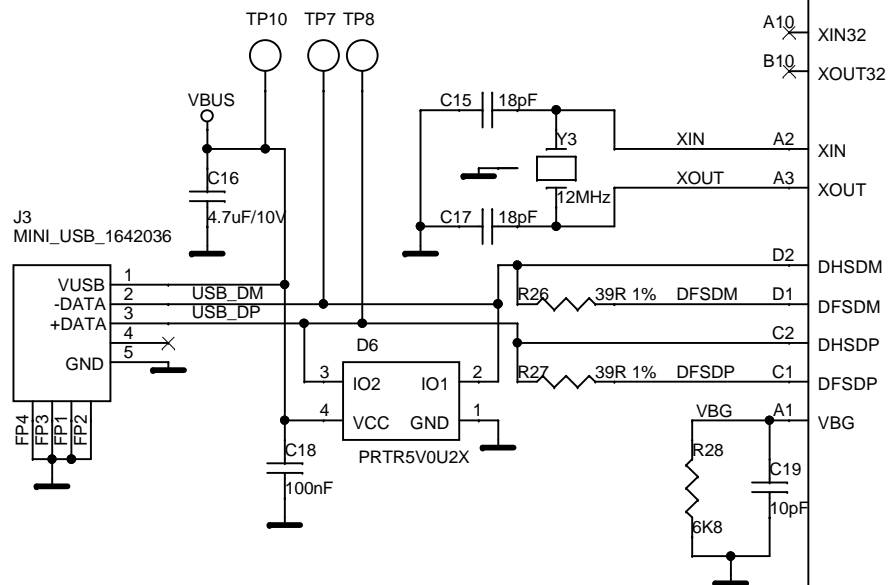
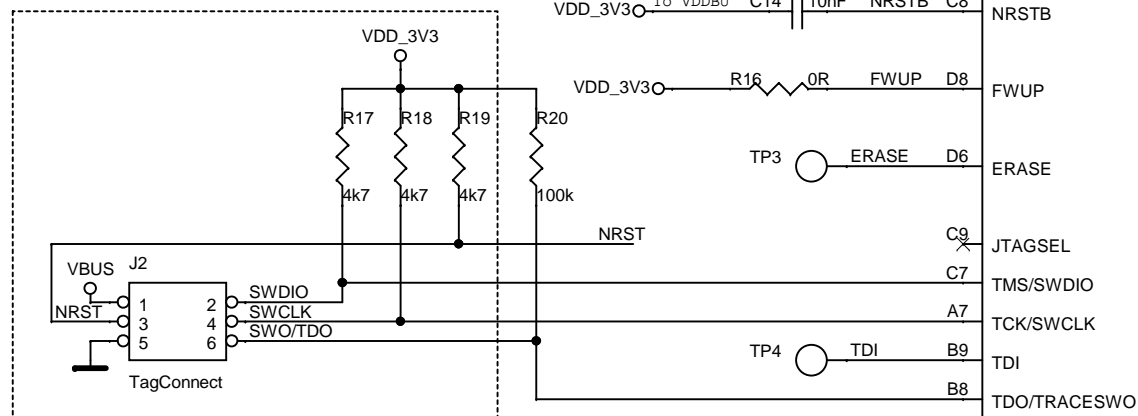
Title : DA14580DEVKT-B

Doc. Nr. 078-30-A Designer: FvD

Date: Thursday, April 24, 2014 Sheet: 1 of 2



For programming SAM3U2C



Dialog Semiconductor
Het Zuiderkruis 53
5215 MV 's-Hertogenbosch
tel. (+31) 73 6408822
fax. (+31) 73 6408823