

RL78/G24 CPU Card for Motor Control Evaluation Board  
(RTK0EMG240C00000BJ)  
Schematics

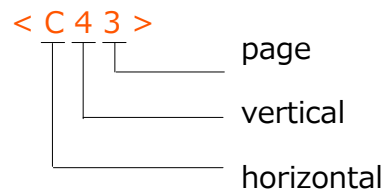
- 01 : Conten
- 02 : Inverter
- 03 : Connector
- 04 : History

Supplementary explanation :

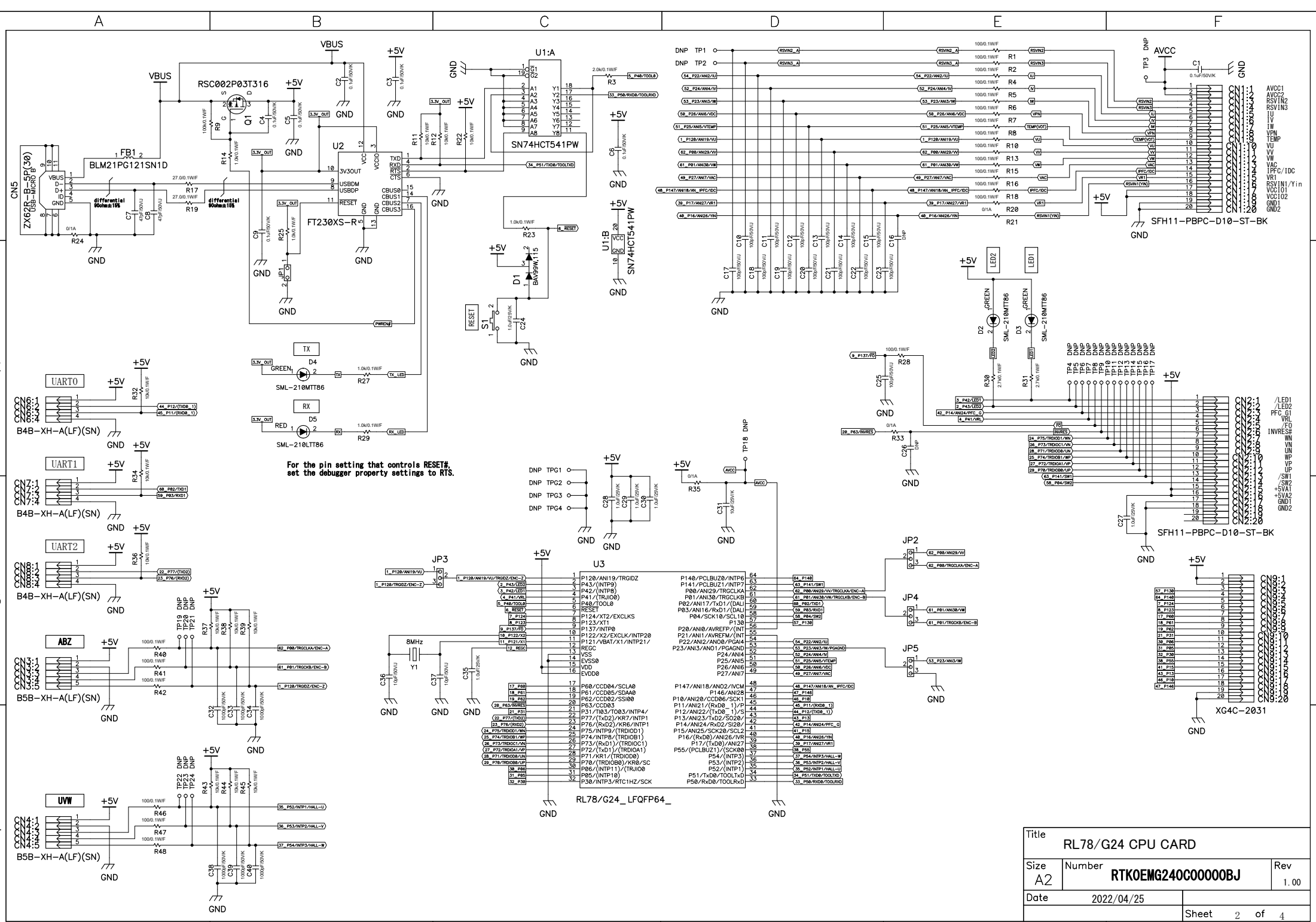
DNP: unmounted part

Access point: <horizontal, vertical page>

Ex.

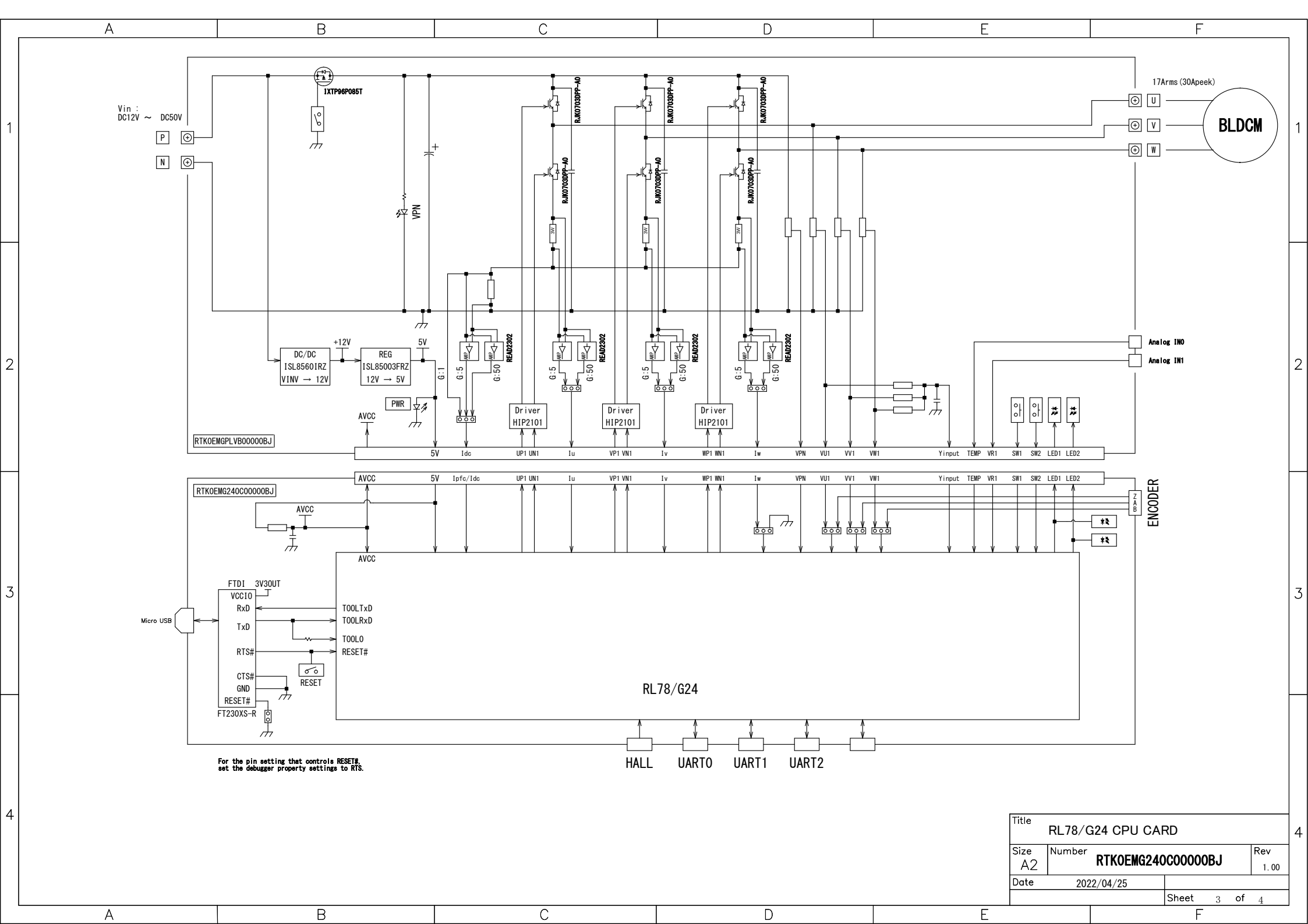


Title			RL78/G24 CPU CARD		
Size	Number	Rev			
A2	RTK0EMG240C00000BJ	1.00			
Date	2022/04/25				
			Sheet	1	of 3



For the pin setting that controls RESET#, set the debugger property settings to RTS.

Title		RL78/G24 CPU CARD	
Size	Number	Rev	
A2	RTKOEMG240C00000BJ	1.00	
Date	2022/04/25	Sheet 2 of 4	



For the pin setting that controls RESET#, set the debugger property settings to RTS.

Title		RL78/G24 CPU CARD	
Size	A2	Number	RTKOEMG240C00000BJ
Date	2022/04/25	Rev	1.00
		Sheet 3 of 4	

A

B

C

D

E

F

### History

Rev.	Date	Page	Summary
1.0	2022/4/25	—	First edition

1

1

2

2

3

3

4

4

Title		RL78/G24 CPU CARD	
Size	Number	Rev	
A2	RTK0EMG240C00000BJ	1.00	
Date	2022/04/25		
		Sheet 4 of 4	

A

B

C

D

E

F