

8

7

6

5

4

3

2

1

REVISIONS

DCN	REV	DESCRIPTION	DATE	CHANGE BY
	A	INITIAL RELEASE	2010-07-18	K. LEUNG

IDT 89HP0602Q USB 3.0 & SATA EVALUATION BOARDS

TABLE OF CONTENTS

89HP0602Q, POWER.....2
89HP0602Q, USB CONNECTORS...3
USB-TO-SMA CONVERTER BOARD...4
89HP0602Q, POWER.....5
89HP0602Q, SATA CONNECTORS...6
SATA-TO-SMA CONVERTER BOARD..7



CONFIDENTIAL PROPERTY OF INTEGRATED DEVICE TECHNOLOGY, INC.
6024 SILVER CREEK VALLEY ROAD, SAN JOSE, CA 95138
COPYRIGHT (C) 2010 IDT

TITLE 89HP0602Q Evaluation Boards			
SIZE B	DRAWING NO. P0602Q-U/S-EB-001	FAB P/N 18-702-000	REV. A
AUTHOR K. Leung		CHECKED BY D. Huang	
Sun Aug 01 01:38:55 2010			SHEET 1 OF 7

8

7

6

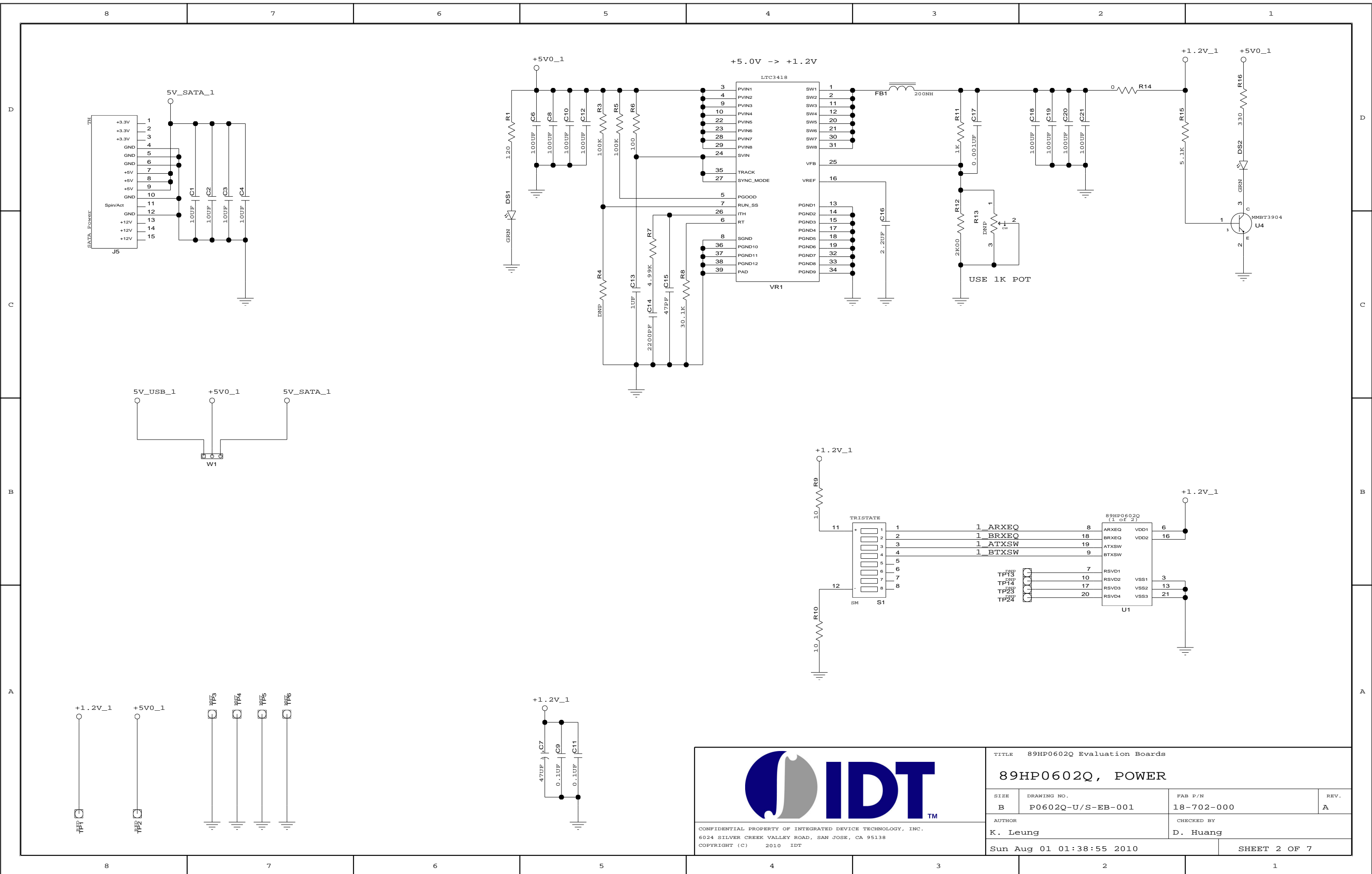
5


4

3

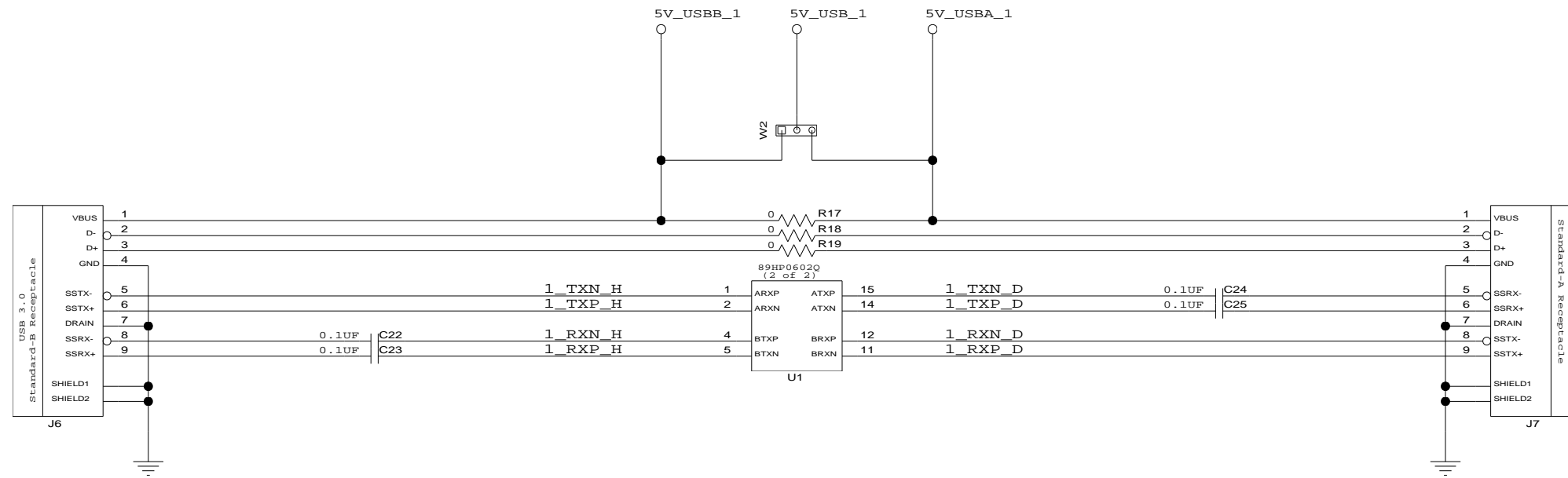
2

1



				TITLE 89HP0602Q Evaluation Boards 89HP0602Q, POWER			
SIZE	DRAWING NO.	FAB P/N	REV.				
B	P0602Q-U/S-EB-001	18-702-000	A				
AUTHOR		CHECKED BY					
K. Leung		D. Huang					
Sun Aug 01 01:38:55 2010			SHEET 2 OF 7				

CONFIDENTIAL PROPERTY OF INTEGRATED DEVICE TECHNOLOGY, INC.
 6024 SILVER CREEK VALLEY ROAD, SAN JOSE, CA 95138
 COPYRIGHT (C) 2010 IDT



18" TRACE BETWEEN J? AND U1

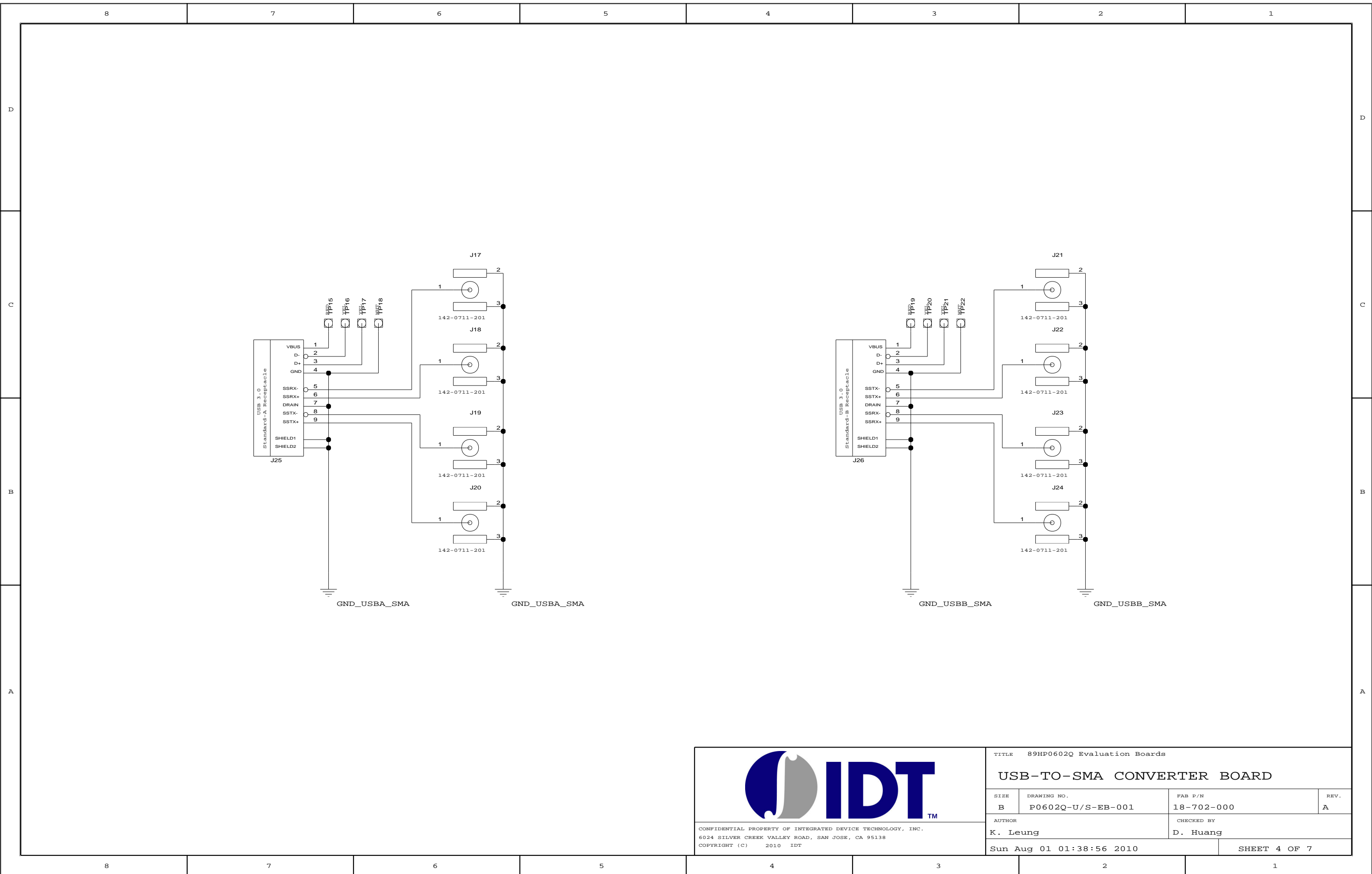


CONFIDENTIAL PROPERTY OF INTEGRATED DEVICE TECHNOLOGY, INC.
6024 SILVER CREEK VALLEY ROAD, SAN JOSE, CA 95138
COPYRIGHT (C) 2010 IDT

TITLE 89HP0602Q Evaluation Boards

89HP0602Q, USB CONNECTORS

SIZE B	DRAWING NO. P0602Q-U/S-EB-001	FAB P/N 18-702-000	REV. A
AUTHOR K. Leung		CHECKED BY D. Huang	
Sun Aug 01 01:38:56 2010			SHEET 3 OF 7



CONFIDENTIAL PROPERTY OF INTEGRATED DEVICE TECHNOLOGY, INC.
 6024 SILVER CREEK VALLEY ROAD, SAN JOSE, CA 95138
 COPYRIGHT (C) 2010 IDT

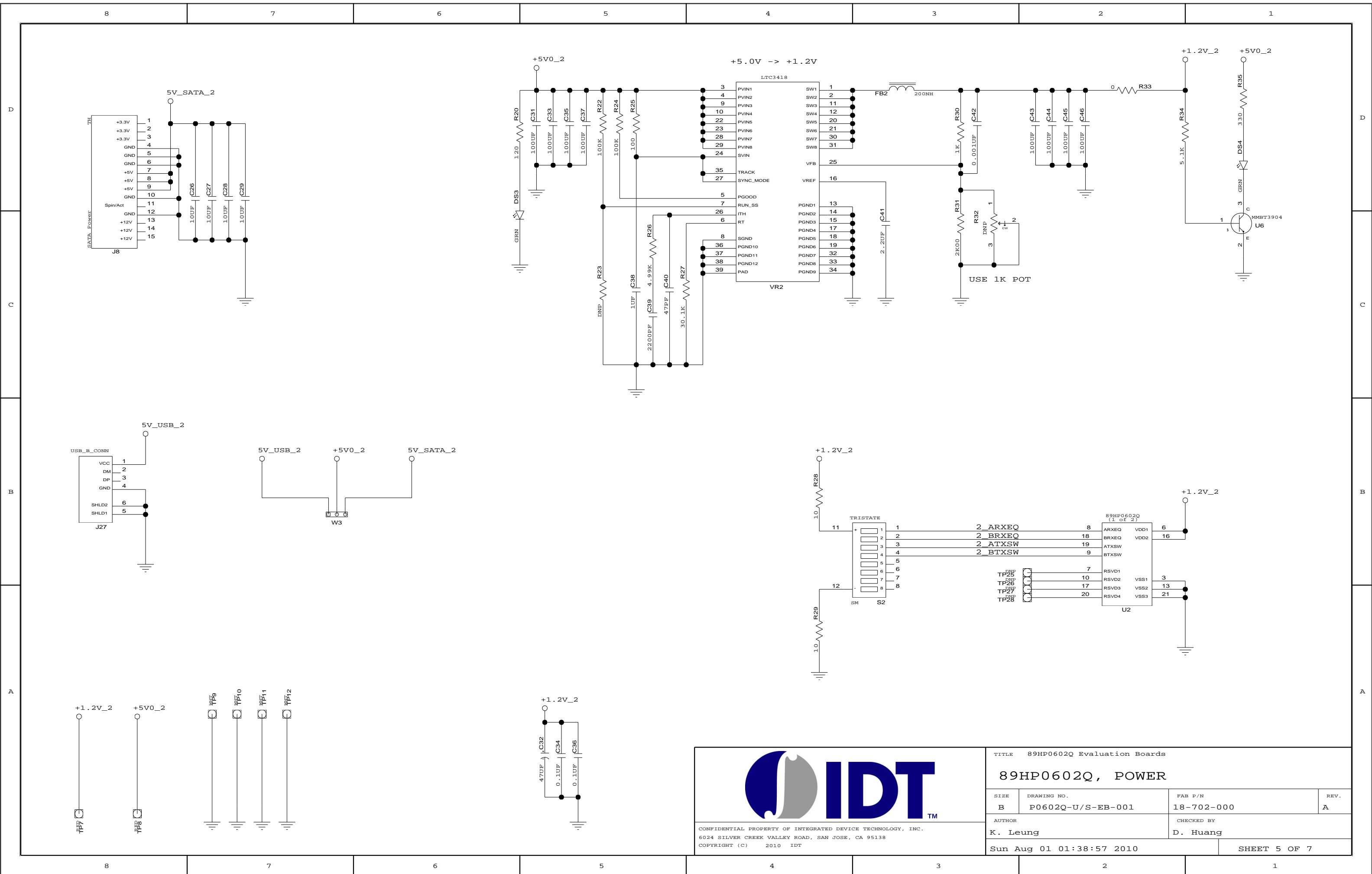
TITLE 89HP0602Q Evaluation Boards


USB-TO-SMA CONVERTER BOARD

SIZE B	DRAWING NO. P0602Q-U/S-EB-001	FAB P/N 18-702-000	REV. A
-----------	----------------------------------	-----------------------	-----------

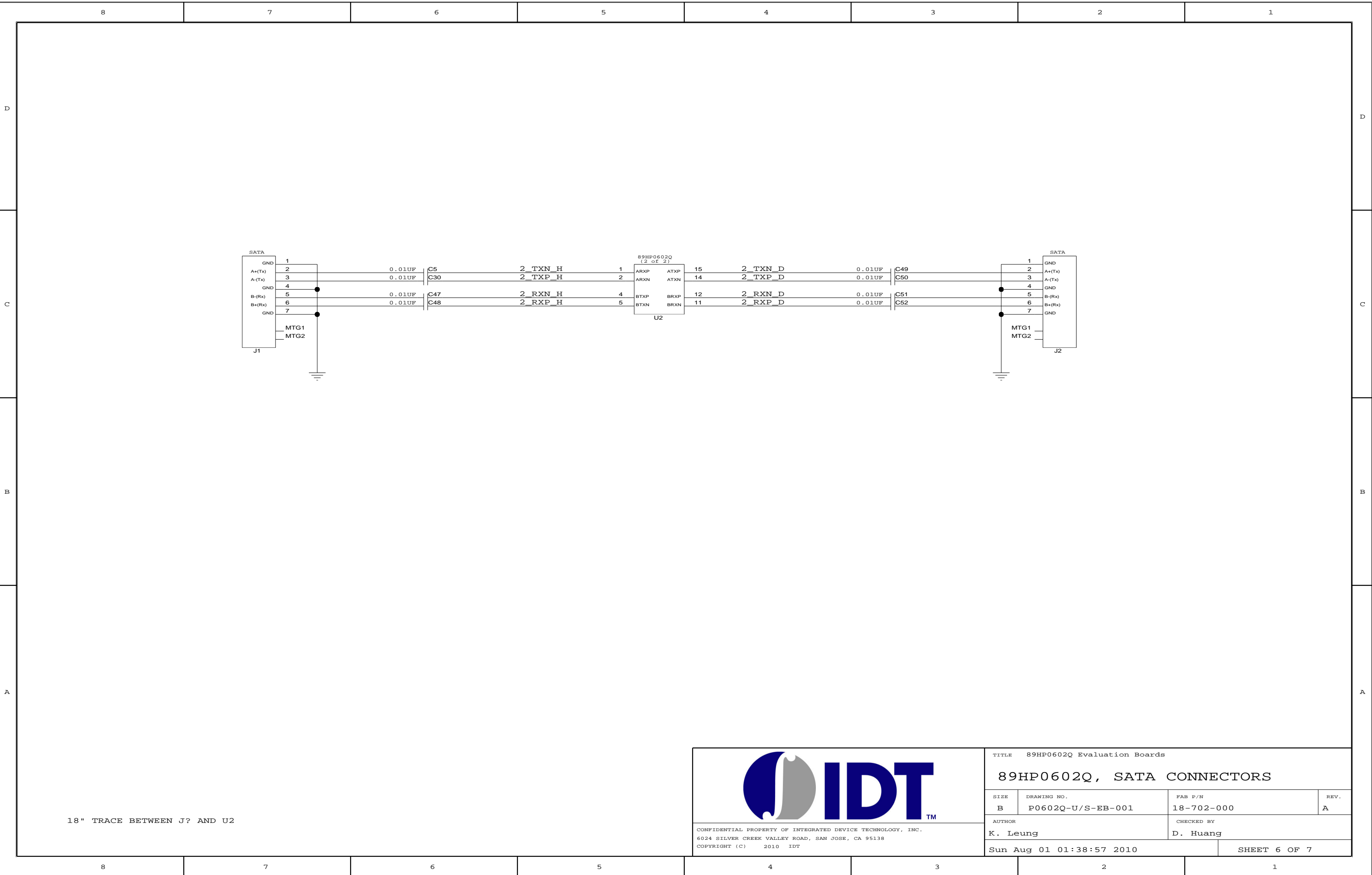
AUTHOR K. Leung	CHECKED BY D. Huang
--------------------	------------------------

Sun Aug 01 01:38:56 2010 SHEET 4 OF 7



				TITLE 89HP0602Q Evaluation Boards 89HP0602Q, POWER			
SIZE	DRAWING NO.	FAB P/N	REV.				
B	P0602Q-U/S-EB-001	18-702-000	A				
AUTHOR		CHECKED BY					
K. Leung		D. Huang					
Sun Aug 01 01:38:57 2010				SHEET 5 OF 7			

CONFIDENTIAL PROPERTY OF INTEGRATED DEVICE TECHNOLOGY, INC.
 6024 SILVER CREEK VALLEY ROAD, SAN JOSE, CA 95138
 COPYRIGHT (C) 2010 IDT

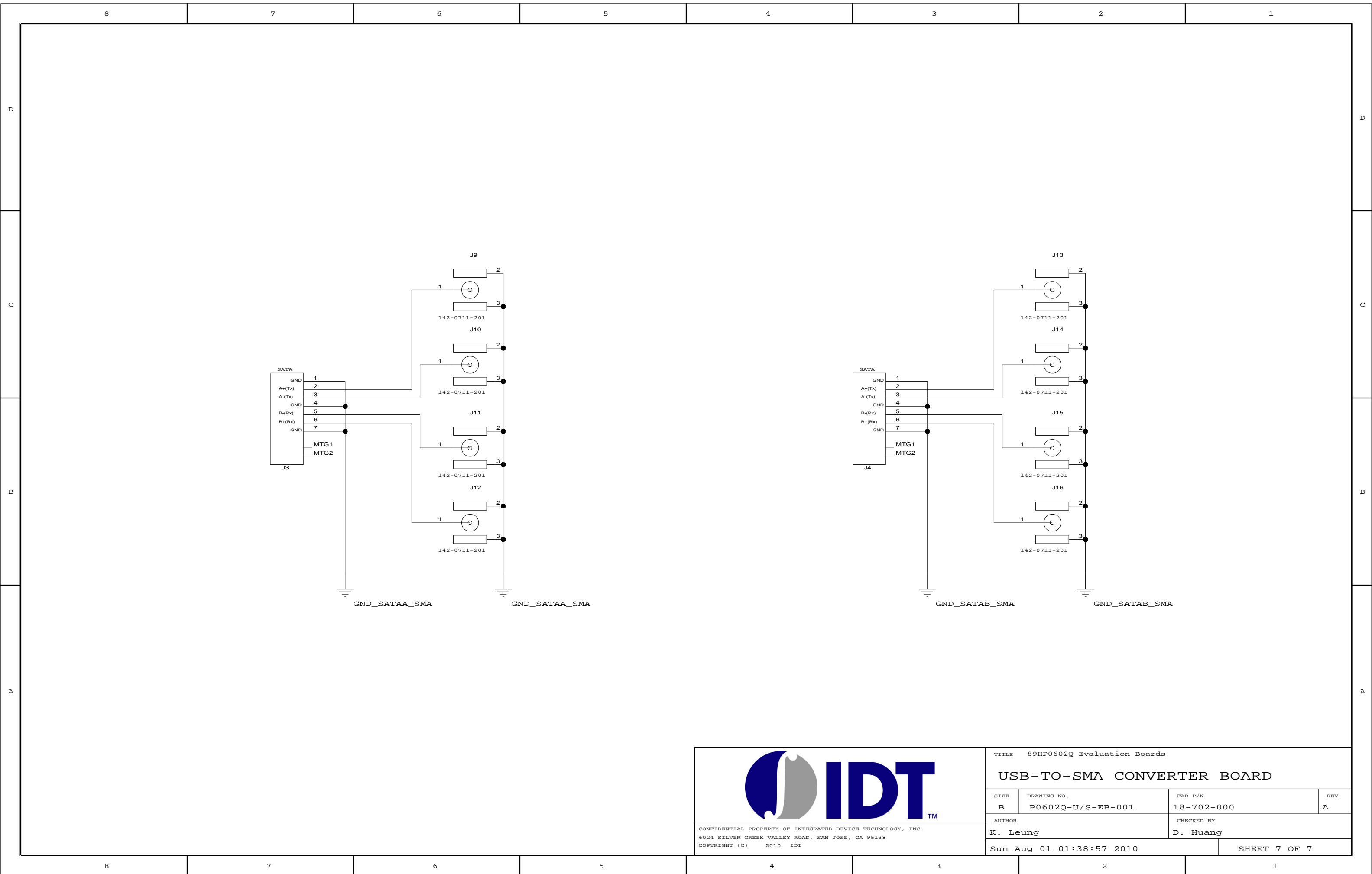


18" TRACE BETWEEN J? AND U2



CONFIDENTIAL PROPERTY OF INTEGRATED DEVICE TECHNOLOGY, INC.
6024 SILVER CREEK VALLEY ROAD, SAN JOSE, CA 95138
COPYRIGHT (C) 2010 IDT

TITLE 89HP0602Q Evaluation Boards			
89HP0602Q, SATA CONNECTORS			
SIZE	DRAWING NO.	FAB P/N	REV.
B	P0602Q-U/S-EB-001	18-702-000	A
AUTHOR		CHECKED BY	
K. Leung		D. Huang	
Sun Aug 01 01:38:57 2010			SHEET 6 OF 7



CONFIDENTIAL PROPERTY OF INTEGRATED DEVICE TECHNOLOGY, INC.
 6024 SILVER CREEK VALLEY ROAD, SAN JOSE, CA 95138
 COPYRIGHT (C) 2010 IDT

TITLE 89HP0602Q Evaluation Boards

USB-TO-SMA CONVERTER BOARD

SIZE B	DRAWING NO. P0602Q-U/S-EB-001	FAB P/N 18-702-000	REV. A
-----------	----------------------------------	-----------------------	-----------

AUTHOR K. Leung	CHECKED BY D. Huang
--------------------	------------------------

Sun Aug 01 01:38:57 2010 SHEET 7 OF 7