

Smart Configurator for RZ V1.12.0

Release Note

Introduction

Thank you for using the Smart Configurator for RZ.

This document describes the restrictions and points for caution. Read this document before using the product.

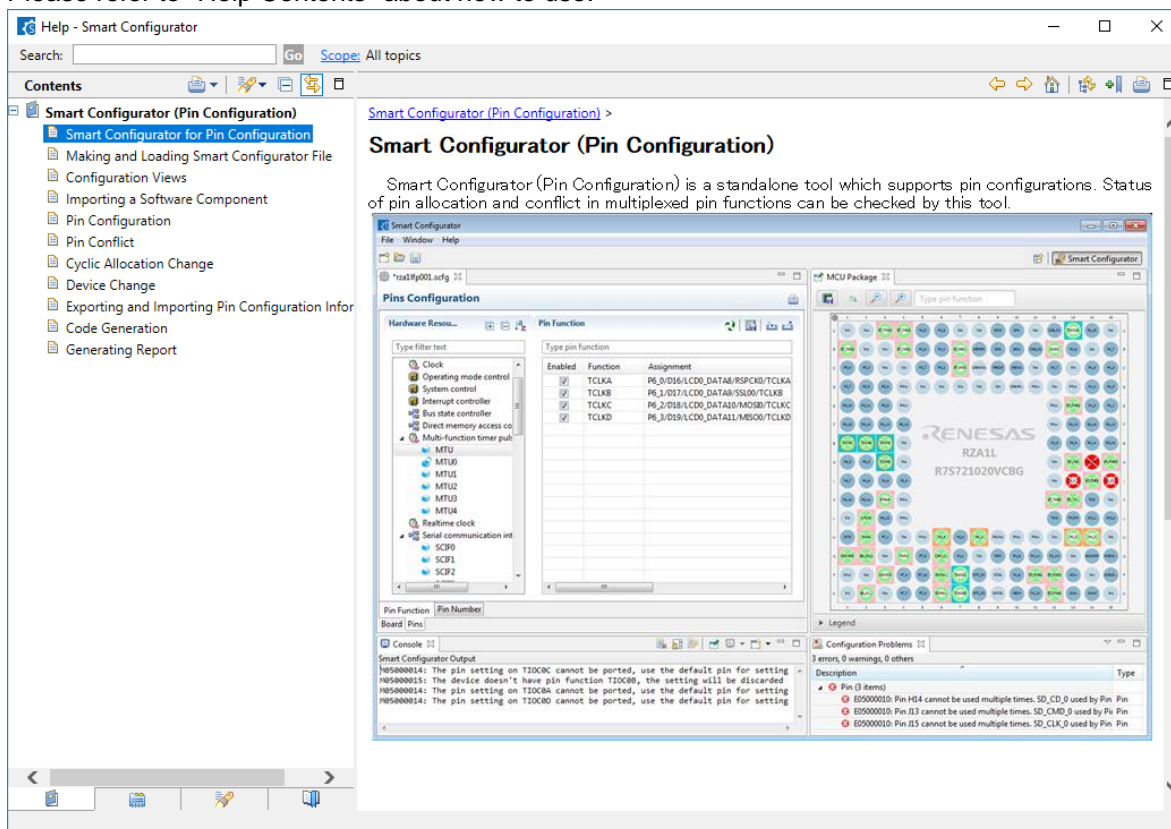
Contents

1.	Introduction	2
1.1	System Requirements	2
1.1.1	PC	2
2.	Support List	3
2.1	Supported Devices List	3
2.2	New Support	6
3.	Changes	7
3.1	Correction of issues/limitations	7
3.1.1	Allow grouping selection for Camera Data Receiving Unit peripheral	7
3.1.2	Allow grouping selection for LCDC peripheral	8
3.1.3	Allow grouping selection for Gigabit Ethernet Interface peripheral	8
3.1.4	Corrected the generated code of USB peripheral	9
3.1.5	Corrected the generated code of Interrupt Controller peripheral	10
3.1.6	Allow individual selection of GPT_EXT_TRIGGER pins	11
3.1.7	Allow individual selection of CANFD Interface peripheral pins	11
4.	List of [Notes] RENESAS TOOL NEWS	12
5.	Points for Limitation	13
5.1	List of Limitation	13
5.2	Details of Limitation	13
5.2.1	Settings may not be saved when the "Next group of pins for the selected resource" button is used	13
6.	Point for Caution	14
6.1	List of Caution	14
6.2	Details of Caution	14
6.2.1	Functions not supported by RZ/A1 package	14
6.2.2	Projects created using Smart Configurator for RZ V1.3.0 and before	14
	Revision History	15

1. Introduction

The Smart Configurator for RZ is a standalone GUI-based tool for setting the assignments of pin functions to pins in the design of hardware specifications. The assignments of pins can be set up from a GUI, which also checks and offers solutions for cases of contention for the same pins by multiplexed functions.

Please refer to "Help Contents" about how to use.



1.1 System Requirements

The operating environment is as follows:

1.1.1 PC

- IBM PC/AT compatibles (Windows® 10 64-bit, Windows® 8.1 64-bit)
- Processor: 1 GHz or higher (must support hyper-threading, multi-core CPUs)
- Memory capacity: 2 GB or more recommended.
- Hard disk capacity: 300 MB or more spare capacity
- Display: 1024 x 768 or higher resolution, 65,536 or more colors
- All other necessary software environments in addition to Windows OS
 - Java Runtime Environment

Please note that from V1.11.0, Smart Configurator for RZ will be released as a 64-bit product build. The switch to 64-bit means that it is no longer possible to run this version of the tool on Windows 8.1 and Windows 10 32-bit versions.

2. Support List

2.1 Supported Devices List

Below is a list of devices supported by the Smart Configurator for RZ V1.12.0.

Table 1. Supported Devices

RZ/A1L group	
PIN	Device name
176pin	R7S721020VCBG, R7S721020VCFP, R7S721020VLFP
208pin	R7S721021VCFP, R7S721021VLFP
RZ/A1LU group	
PIN	Device name
176pin	R7S721030VCBG, R7S721030VCFP, R7S721030VLFP
208pin	R7S721031VCFP, R7S721031VLFP
233pin	R7S721031VCBG, R7S722031VLBG
RZ/A1LC group	
PIN	Device name
176pin	R7S721034VCBG
Following documents.	
Manual Name	Document Number
RZ/A1L, RZ/A1LU, RZ/A1LC Group User's Manual: Hardware	R01UH0437EJ0300

RZ/A1H group	
PIN	Device name
256pin	R7S721000VCBG, R7S721000VCFP, R7S721000VLFP
324pin	R7S721001VCBG, R7S721001VLBG
RZ/A1M group	
PIN	Device name
256pin	R7S721010VCBG, R7S721010VCFP, R7S721010VLFP
324pin	R7S721011VCBG, R7S721011VLBG
Following documents.	
Manual Name	Document Number
RZ/A1H, RZ/A1M Group User's Manual: Hardware	R01UH0403EJ0200

RZ/G1M group	
PIN	Device name
831pin	R8A77430
Following documents	
Manual name	Document Number
RZ/G1M User's Manual: Hardware	R01UH0626EJ0100

RZ/G1C group	
PIN	Device name
501pin	R8A77470
Following documents	
Manual name	Document Number
RZ/G1C User's Manual: Hardware	R01UH0695EJ0100

RZ/G1E group	
PIN	Device name
501pin	R8A77450
Following documents	
Manual name	Document Number
RZ/G1E User's Manual: Hardware	R01UH0544EJ0100

RZ/G1H group	
PIN	Device name
831pin	R8A77420
Following documents	
Manual name	Document Number
RZ/G1H User's Manual: Hardware	R01UH0627EJ0100

RZ/G1N group	
PIN	Device name
831pin	R8A77440
Following documents	
Manual name	Document Number
RZ/G1N User's Manual: Hardware	R01UH0628EJ0100

RZ/G2E group	
PIN	Device name
552pin	R8A774C0
Following documents	
Manual name	Document Number
RZ/G2E User's Manual: Hardware	R01UH0848EJ0080

RZ/G2M group	
PIN	Device name
1022pin	R8A774A0
Following documents	
Manual name	Document Number
RZ/G2M User's Manual: Hardware	R01UH0846EJ0080

RZ/G2N group	
PIN	Device name
1022pin	R8A774B0
Following documents	
Manual name	Document Number
RZ/G2N User's Manual: Hardware	R01UH0847EJ0080

RZ/G2H group	
PIN	Device name
1022pin	R8A774E0
Following documents	
Manual name	Document Number
RZ/G Series, 2nd Generation User's Manual: Hardware	R01UH0808EJ0100

RZ/G2L, G2LC group	
PIN	Device name
456pin 551pin 361pin	R9A07G044L (15mm) R9A07G044L (21mm) R9A07G044LC
Following documents	
Manual name	Document Number
RZ/G Series, 2nd Generation User's Manual: Hardware	R01UH0914EJ0041

RZ/V2L group	
PIN	Device name
456pin 551pin	R9A07G054L (15mm) R9A07G054L (21mm)
Following documents	
Manual name	Document Number
RZ/V2L Group User's Manual: Hardware	R01UH0914EJ0041 R01UH0936EJ0040

RZ/G2UL group	
PIN	Device name
361pin 361pin	R9A07G043U (Type-1) R9A07G043U (Type-2)
Following documents	
Manual name	Document Number
RZ/G2UL Group User's Manual: Hardware	R01UH0968EJ0050

2.2 New Support

There are no new devices supported in this version.

3. Changes

This chapter describes the changes for Smart Configurator for RZ V1.12.0.

3.1 Correction of issues/limitations

No.	Descriptions	RZ/A1	RZ/G1	RZ/G2	RZ/V2
1	Allow grouping selection for Camera Data Receiving Unit peripheral	-	-	✓	✓
2	Allow grouping selection for LCDC peripheral	-	-	✓	✓
3	Allow grouping selection for Gigabit Ethernet Interface peripheral	-	-	✓	✓
4	Corrected the generated code of USB peripheral	-	-	✓	✓
5	Corrected the generated code of Interrupt Controller peripheral	-	-	✓	-
6	Allow individual selection of GPT_EXT_TRIGGER pins	-	-	✓	✓
7	Allow individual selection of CANFD Interface peripheral pins	-	-	✓	✓

✓:Applicable, -:Not Applicable

3.1.1 Allow grouping selection for Camera Data Receiving Unit peripheral

The following groups are selectable from the Camera Data Receiving Unit peripheral in the Pin Function page:

- CAM_DATA8
- CAM_DATA10
- CAM_DATA12
- CAM_DATA16

After a group selection is made, only pins belonging to the selected group will be synchronized and assigned.

[Target]

RZ/G2L, RZ/V2L

3.1.2 Allow grouping selection for LCDC peripheral

The following groups are selectable from the LCDC peripheral in the Pin Function page:

- DISP_BGR888
- DISP_BGR666

After a group selection is made, only pins belonging to the selected group will be synchronized and assigned.

Additionally, the group DISP has been split into the following sub-groups:

- DISP_CLK
- DISP_BGR888
- DISP_BGR666
- DISP_DE
- DISP_SYNC

[Target]

RZ/G2L, RZ/G2UL, RZ/V2L

3.1.3 Allow grouping selection for Gigabit Ethernet Interface peripheral

The following groups are selectable from the Gigabit Ethernet Interface peripheral in the Pin Function page:

- ETH0_MII
- ETH0_RGMII
- ETH1_MII
- ETH1_RGMII

After a group selection is made, only pins belonging to the selected group will be synchronized and assigned.

[Target]

RZ/G2L, RZ/G2LC, RZ/G2UL, RZ/V2L

3.1.4 Corrected the generated code of USB peripheral

The groups USB0 and USB1 have been split into the following sub-groups:

- USB0
- USB0_OTG_EXICEN
- USB0_OTG_ID
- USB1
- USB1_OTG_EXICEN
- USB1_OTG_ID

The generated output has been corrected as follows:

In V1.11.0:

```
&pfc {
  usb0_pins: usb0 {
    renesas,groups = "usb0_a";
    renesas,function = "usb0";
  };
};
&usb0 {
  pinctrl-0 = <&usb0_pins>;
  pinctrl-names = "default";

  status = "okay";
};
```

In V1.12.0:

```
&pfc {
  usb0_pins: usb0 {
    renesas,groups = "usb0_otg_exien a", "usb0_otg_id a", "usb0 a";
    renesas,function = "usb0";
  };
};
&usb0 {
  pinctrl-0 = <&usb0_pins>;
  pinctrl-names = "default";

  status = "okay";
};
```

[Target]

RZ/G2L, RZ/G2LC, RZ/G2UL, RZ/V2L

3.1.5 Corrected the generated code of Interrupt Controller peripheral

The generated code for IRQ0 to IRQ7 has been corrected as follows:

In V1.11.0:

```
&pfc {  
    irq0_pins: irq0 {  
        renesas,groups = "irq0_a";  
        renesas,function = "irq0";  
    };  
    irq1_pins: irq1 {  
        renesas,groups = "irq1_a";  
        renesas,function = "irq1";  
    };  
};  
&irq0 {  
    pinctrl-0 = <&irq0_pins>;  
    pinctrl-names = "default";  
  
    status = "okay";  
};  
&irq1 {  
    pinctrl-0 = <&irq1_pins>;  
    pinctrl-names = "default";  
  
    status = "okay";  
};
```

In V1.12.0:

```
&pfc {  
    irq_pins: irq {  
        renesas,groups = "irq0_a","irq1_a";  
        renesas,function = "irq";  
    };  
};  
&irq {  
    pinctrl-0 = <&irq_pins>;  
    pinctrl-names = "default";  
  
    status = "okay";  
};
```

[Target]

RZ/G2UL

3.1.6 Allow individual selection of GPT_EXT_TRIGGER pins

The pin functions GTETRGA, GTETRGB, GTETRGC and GTETRGD belonging to the GPT_EXT_TRIGGER group in the General PWM Timer peripheral can now be selected individually.

Enabl...	Group	Function	Assignment
<input checked="" type="checkbox"/>	GPT_EXT_TRIGGER_A	GTETRGA	⚡ P10_0/DISP_DATA6/CAN_CLK_A/MTK...
<input checked="" type="checkbox"/>	GPT_EXT_TRIGGER_B	GTETRGB	⚡ P10_1/DISP_DATA7/CAN0_TX_A/MTK...
<input type="checkbox"/>	GPT_EXT_TRIGGER_C	GTETRGC	⚡ Not assigned
<input type="checkbox"/>	GPT_EXT_TRIGGER_D	GTETRGD	⚡ Not assigned
<input type="checkbox"/>	GPT0_A	GTIOC0A	⚡ Not assigned
<input type="checkbox"/>	GPT0_B	GTIOC0B	⚡ Not assigned
<input type="checkbox"/>	GPT1_A	GTIOC1A	⚡ Not assigned
<input type="checkbox"/>	GPT1_B	GTIOC1B	⚡ Not assigned
<input type="checkbox"/>	GPT2_A	GTIOC2A	⚡ Not assigned

[Target]

RZ/G2L, RZ/V2L, RZ/G2LC

3.1.7 Allow individual selection of CANFD Interface peripheral pins

The pins belonging to the CANFD Interface peripheral can now be selected individually.

Enabl...	Group	Function	Assignment
<input checked="" type="checkbox"/>	CAN0_RX	CAN0_RX	⚡ P11_0/DISP_DATA8/CAN0_RX_A/MT...
<input checked="" type="checkbox"/>	CAN0_RX_DATARATE_EN	CAN0_RX_DAT...	⚡ P12_0/DISP_DATA10/CAN0_RX_DAT...
<input checked="" type="checkbox"/>	CAN0_TX	CAN0_TX	⚡ P10_1/DISP_DATA7/CAN0_TX_A/MT...
<input checked="" type="checkbox"/>	CAN0_TX_DATARATE_EN	CAN0_TX_DAT...	⚡ P11_1/DISP_DATA9/CAN0_TX_DATA...
<input type="checkbox"/>	CAN1_RX	CAN1_RX	⚡ Not assigned
<input type="checkbox"/>	CAN1_RX_DATARATE_EN	CAN1_RX_DAT...	⚡ Not assigned
<input type="checkbox"/>	CAN1_TX	CAN1_TX	⚡ Not assigned
<input type="checkbox"/>	CAN1_TX_DATARATE_EN	CAN1_TX_DAT...	⚡ Not assigned
<input type="checkbox"/>	CAN_CLK	CAN_CLK	⚡ Not assigned

Additionally, the group names of the CANFD Interface peripheral have been updated as follows:

- CAN0 is changed to CAN0_RX and CAN0_TX.
- CAN0_EN is changed to CAN0_RX_DATARATE_EN and CAN0_TX_DATARATE_EN.
- CAN1 is changed to CAN1_RX and CAN1_TX.
- CAN1_EN is changed to CAN1_RX_DATARATE_EN and CAN1_TX_DATARATE_EN.
- CAN is changed to CAN_CLK

[Target]

RZ/G2L, RZ/G2LC, RZ/G2UL, RZ/V2L

4. List of [Notes] RENESAS TOOL NEWS

[Notes] Below is a list of notifications delivered by RENESAS TOOL NEWS.

Issue date	Document No.	Description	Applicable MCUs	Fixed version
2019/12/16	R20TS0520	Incorrect display of peripheral function names "Camera Serial Interface" and "SPI Multi I/O Bus Controller" on pin function tab	RZ/G2E	V1.8.0
2021/7/16	R20TS0739	Missing pins for I2C0, I2C3 and I2C5 of RZ/G2M	RZ/G2M	V1.10.1

5. Points for Limitation

This section describes points for limitation regarding the Smart Configurator for RZ V1.12.0.

5.1 List of Limitation

No.	Descriptions	RZ/A1	RZ/G1	RZ/G2	RZ/V2
1	Settings may not be saved when the “Next group of pins for the selected resource” button is used	✓	✓	✓	✓

✓:Applicable, -:Not Applicable

5.2 Details of Limitation

5.2.1 Settings may not be saved when the “Next group of pins for the selected resource” button is used

In the Pin Function page, the “Next group of pins for the selected resource” button may not trigger a setting change to be detected when clicked.

When selections are made in the Pins page using only this button, the selections cannot be saved because the “Save” option is disabled.

To work-around this issue, please select and unselect any pin in the Pins page and make sure the “Save” option is enabled before saving the project.

The screenshot shows the Smart Configurator interface. The top bar includes 'Pin configuration' and buttons for 'Generate Code' and 'Generate Report'. The main area is split into 'Hardware Resource' and 'Pin Function' panels. The 'Pin Function' panel contains a table with columns: Enabl..., Group, Function, Assignment, and Pin Number. A red box highlights a circular refresh button in the top right of the Pin Function panel. Below the screenshot, the 'File' menu is open, with the 'Save' option (Ctrl+S) highlighted by a red box.

This issue will be fixed in the next release.

[Target]

All supported devices.

6. Point for Caution

This chapter describes the cautions for Smart Configurator for RZ V1.12.0.

6.1 List of Caution

No.	Descriptions	RZ/A1	RZ/G1	RZ/G2	RZ/V2
1	Functions not supported by RZ/A1 package	✓	-	-	-
2	Projects created using Smart Configurator for RZ V1.3.0 and before	-	✓	-	-

✓ :Applicable, -:Not Applicable

6.2 Details of Caution

6.2.1 Functions not supported by RZ/A1 package

RZ/A1 package does not support code generation and board configuration.

[Target]

RZ/A1H, A1L, A1LC, A1LU, A1M

6.2.2 Projects created using Smart Configurator for RZ V1.3.0 and before

Projects created using Smart Configurator for RZ V1.3.0 and before do not have [Group] information. Please confirm [Group] after opening those projects.

[Workaround]

None.

[Target]

RZ/G1C, G1E, G1H, G1M, G1N

Revision History

Rev.	Date	Description	
		Page	Summary
1.6.0	July.22.19	-	First edition issued
1.7.0	October.21.19	4	Updated information for Smart Configurator for RZ V1.7.0 - Added new device support for RZ/G2N
1.7.1	December.20.19	8, 9	Added new limitation of 5.2.1
1.8.0	August.05.20	7 8 11	Updated information for Smart Configurator for RZ V1.8.0 - Added new device support for RZ/G2H - Added correction of issues/limitations 3.2.1 and 3.2.2 - Removed limitation of 5.2.1
1.9.0	April.20.21	6,7	Updated information for Smart Configurator for RZ V1.9.0 - Added new device support for RZ/G2L, G2LC
1.10.0	July.20.21	6,7 8	Updated information for Smart Configurator for RZ V1.10.0 - Added new device support for RZ/V2L - Added new for limitation of 5.2.1
1.10.1	August.5.21	7 8	Updated information for Smart Configurator for RZ V1.10.1 - Added correction of issues/limitations 3.2.1 - Removed limitation of 5.2.1
1.11.0	December.20.21	2 6,7 8	Updated information for Smart Configurator for RZ V1.11.0 - Updated system requirements in 1.1.1 - Added new device support for RZ/G2UL in 2.2.1 - Added correction of issues/limitations 3.2.1, 3.2.2 and 3.2.3
1.12.0	January.20.22	7 – 11 13	Updated information for Smart Configurator for RZ V1.12.0 - Added correction of issues/limitations 3.1.1 - 3.1.7 - Added new limitation of 5.2.1

General Precautions in the Handling of Microprocessing Unit and Microcontroller Unit Products

The following usage notes are applicable to all Microprocessing unit and Microcontroller unit products from Renesas. For detailed usage notes on the products covered by this document, refer to the relevant sections of the document as well as any technical updates that have been issued for the products.

1. Precaution against Electrostatic Discharge (ESD)

A strong electrical field, when exposed to a CMOS device, can cause destruction of the gate oxide and ultimately degrade the device operation. Steps must be taken to stop the generation of static electricity as much as possible, and quickly dissipate it when it occurs. Environmental control must be adequate. When it is dry, a humidifier should be used. This is recommended to avoid using insulators that can easily build up static electricity.

Semiconductor devices must be stored and transported in an anti-static container, static shielding bag or conductive material. All test and measurement tools including work benches and floors must be grounded. The operator must also be grounded using a wrist strap. Semiconductor devices must not be touched with bare hands. Similar precautions must be taken for printed circuit boards with mounted semiconductor devices.

2. Processing at power-on

The state of the product is undefined at the time when power is supplied. The states of internal circuits in the LSI are indeterminate and the states of register settings and pins are undefined at the time when power is supplied. In a finished product where the reset signal is applied to the external reset pin, the states of pins are not guaranteed from the time when power is supplied until the reset process is completed. In a similar way, the states of pins in a product that is reset by an on-chip power-on reset function are not guaranteed from the time when power is supplied until the power reaches the level at which resetting is specified.

3. Input of signal during power-off state

Do not input signals or an I/O pull-up power supply while the device is powered off. The current injection that results from input of such a signal or I/O pull-up power supply may cause malfunction and the abnormal current that passes in the device at this time may cause degradation of internal elements. Follow the guideline for input signal during power-off state as described in your product documentation.

4. Handling of unused pins

Handle unused pins in accordance with the directions given under handling of unused pins in the manual. The input pins of CMOS products are generally in the high-impedance state. In operation with an unused pin in the open-circuit state, extra electromagnetic noise is induced in the vicinity of the LSI, an associated shoot-through current flows internally, and malfunctions occur due to the false recognition of the pin state as an input signal become possible.

5. Clock signals

After applying a reset, only release the reset line after the operating clock signal becomes stable. When switching the clock signal during program execution, wait until the target clock signal is stabilized. When the clock signal is generated with an external resonator or from an external oscillator during a reset, ensure that the reset line is only released after full stabilization of the clock signal. Additionally, when switching to a clock signal produced with an external resonator or by an external oscillator while program execution is in progress, wait until the target clock signal is stable.

6. Voltage application waveform at input pin

Waveform distortion due to input noise or a reflected wave may cause malfunction. If the input of the CMOS device stays in the area between V_{IL} (Max.) and V_{IH} (Min.) due to noise, for example, the device may malfunction. Take care to prevent chattering noise from entering the device when the input level is fixed, and also in the transition period when the input level passes through the area between V_{IL} (Max.) and V_{IH} (Min.).

7. Prohibition of access to reserved addresses

Access to reserved addresses is prohibited. The reserved addresses are provided for possible future expansion of functions. Do not access these addresses as the correct operation of the LSI is not guaranteed.

8. Differences between products

Before changing from one product to another, for example to a product with a different part number, confirm that the change will not lead to problems. The characteristics of a microprocessing unit or microcontroller unit products in the same group but having a different part number might differ in terms of internal memory capacity, layout pattern, and other factors, which can affect the ranges of electrical characteristics, such as characteristic values, operating margins, immunity to noise, and amount of radiated noise. When changing to a product with a different part number, implement a system-evaluation test for the given product.

Notice

1. Descriptions of circuits, software and other related information in this document are provided only to illustrate the operation of semiconductor products and application examples. You are fully responsible for the incorporation or any other use of the circuits, software, and information in the design of your product or system. Renesas Electronics disclaims any and all liability for any losses and damages incurred by you or third parties arising from the use of these circuits, software, or information.
2. Renesas Electronics hereby expressly disclaims any warranties against and liability for infringement or any other claims involving patents, copyrights, or other intellectual property rights of third parties, by or arising from the use of Renesas Electronics products or technical information described in this document, including but not limited to, the product data, drawings, charts, programs, algorithms, and application examples.
3. No license, express, implied or otherwise, is granted hereby under any patents, copyrights or other intellectual property rights of Renesas Electronics or others.
4. You shall be responsible for determining what licenses are required from any third parties, and obtaining such licenses for the lawful import, export, manufacture, sales, utilization, distribution or other disposal of any products incorporating Renesas Electronics products, if required.
5. You shall not alter, modify, copy, or reverse engineer any Renesas Electronics product, whether in whole or in part. Renesas Electronics disclaims any and all liability for any losses or damages incurred by you or third parties arising from such alteration, modification, copying or reverse engineering.
6. Renesas Electronics products are classified according to the following two quality grades: "Standard" and "High Quality". The intended applications for each Renesas Electronics product depends on the product's quality grade, as indicated below.
 - "Standard": Computers; office equipment; communications equipment; test and measurement equipment; audio and visual equipment; home electronic appliances; machine tools; personal electronic equipment; industrial robots; etc.
 - "High Quality": Transportation equipment (automobiles, trains, ships, etc.); traffic control (traffic lights); large-scale communication equipment; key financial terminal systems; safety control equipment; etc.Unless expressly designated as a high reliability product or a product for harsh environments in a Renesas Electronics data sheet or other Renesas Electronics document, Renesas Electronics products are not intended or authorized for use in products or systems that may pose a direct threat to human life or bodily injury (artificial life support devices or systems; surgical implantations; etc.), or may cause serious property damage (space system; undersea repeaters; nuclear power control systems; aircraft control systems; key plant systems; military equipment; etc.). Renesas Electronics disclaims any and all liability for any damages or losses incurred by you or any third parties arising from the use of any Renesas Electronics product that is inconsistent with any Renesas Electronics data sheet, user's manual or other Renesas Electronics document.
7. No semiconductor product is absolutely secure. Notwithstanding any security measures or features that may be implemented in Renesas Electronics hardware or software products, Renesas Electronics shall have absolutely no liability arising out of any vulnerability or security breach, including but not limited to any unauthorized access to or use of a Renesas Electronics product or a system that uses a Renesas Electronics product. RENESAS ELECTRONICS DOES NOT WARRANT OR GUARANTEE THAT RENESAS ELECTRONICS PRODUCTS, OR ANY SYSTEMS CREATED USING RENESAS ELECTRONICS PRODUCTS WILL BE INVULNERABLE OR FREE FROM CORRUPTION, ATTACK, VIRUSES, INTERFERENCE, HACKING, DATA LOSS OR THEFT, OR OTHER SECURITY INTRUSION ("Vulnerability Issues"). RENESAS ELECTRONICS DISCLAIMS ANY AND ALL RESPONSIBILITY OR LIABILITY ARISING FROM OR RELATED TO ANY VULNERABILITY ISSUES. FURTHERMORE, TO THE EXTENT PERMITTED BY APPLICABLE LAW, RENESAS ELECTRONICS DISCLAIMS ANY AND ALL WARRANTIES, EXPRESS OR IMPLIED, WITH RESPECT TO THIS DOCUMENT AND ANY RELATED OR ACCOMPANYING SOFTWARE OR HARDWARE, INCLUDING BUT NOT LIMITED TO THE IMPLIED WARRANTIES OF MERCHANTABILITY, OR FITNESS FOR A PARTICULAR PURPOSE.
8. When using Renesas Electronics products, refer to the latest product information (data sheets, user's manuals, application notes, "General Notes for Handling and Using Semiconductor Devices" in the reliability handbook, etc.), and ensure that usage conditions are within the ranges specified by Renesas Electronics with respect to maximum ratings, operating power supply voltage range, heat dissipation characteristics, installation, etc. Renesas Electronics disclaims any and all liability for any malfunctions, failure or accident arising out of the use of Renesas Electronics products outside of such specified ranges.
9. Although Renesas Electronics endeavors to improve the quality and reliability of Renesas Electronics products, semiconductor products have specific characteristics, such as the occurrence of failure at a certain rate and malfunctions under certain use conditions. Unless designated as a high reliability product or a product for harsh environments in a Renesas Electronics data sheet or other Renesas Electronics document, Renesas Electronics products are not subject to radiation resistance design. You are responsible for implementing safety measures to guard against the possibility of bodily injury, injury or damage caused by fire, and/or danger to the public in the event of a failure or malfunction of Renesas Electronics products, such as safety design for hardware and software, including but not limited to redundancy, fire control and malfunction prevention, appropriate treatment for aging degradation or any other appropriate measures. Because the evaluation of microcomputer software alone is very difficult and impractical, you are responsible for evaluating the safety of the final products or systems manufactured by you.
10. Please contact a Renesas Electronics sales office for details as to environmental matters such as the environmental compatibility of each Renesas Electronics product. You are responsible for carefully and sufficiently investigating applicable laws and regulations that regulate the inclusion or use of controlled substances, including without limitation, the EU RoHS Directive, and using Renesas Electronics products in compliance with all these applicable laws and regulations. Renesas Electronics disclaims any and all liability for damages or losses occurring as a result of your noncompliance with applicable laws and regulations.
11. Renesas Electronics products and technologies shall not be used for or incorporated into any products or systems whose manufacture, use, or sale is prohibited under any applicable domestic or foreign laws or regulations. You shall comply with any applicable export control laws and regulations promulgated and administered by the governments of any countries asserting jurisdiction over the parties or transactions.
12. It is the responsibility of the buyer or distributor of Renesas Electronics products, or any other party who distributes, disposes of, or otherwise sells or transfers the product to a third party, to notify such third party in advance of the contents and conditions set forth in this document.
13. This document shall not be reprinted, reproduced or duplicated in any form, in whole or in part, without prior written consent of Renesas Electronics.
14. Please contact a Renesas Electronics sales office if you have any questions regarding the information contained in this document or Renesas Electronics products.

(Note1) "Renesas Electronics" as used in this document means Renesas Electronics Corporation and also includes its directly or indirectly controlled subsidiaries.

(Note2) "Renesas Electronics product(s)" means any product developed or manufactured by or for Renesas Electronics.

(Rev.5.0-1 October 2020)

Corporate Headquarters

TOYOSU FORESIA, 3-2-24 Toyosu,
Koto-ku, Tokyo 135-0061, Japan
www.renesas.com

Trademarks

Renesas and the Renesas logo are trademarks of Renesas Electronics Corporation. All trademarks and registered trademarks are the property of their respective owners.

Contact information

For further information on a product, technology, the most up-to-date version of a document, or your nearest sales office, please visit:
www.renesas.com/contact/.