

# Code Generator for RZ

R20UT4676EJ0102

Rev.1.02

Oct.06.20

e<sup>2</sup> studio Code Generator Plug-in V2.17.0,

AP4 for RZ V1.10.00

## Release Note

### Introduction

Thank you for using the Code Generator for RZ. This document describes the restrictions and points for caution. Read this document before using the product. You can also check the latest release notes on the RENESAS website.

- [Code Generator for RZ Release Note](#)

### Contents

1.	Introduction.....	2
1.1	Product version.....	2
1.2	Operating environments .....	2
1.2.1	PC.....	2
1.2.2	Development tools.....	2
2.	Supported devices .....	3
3.	Changes .....	4
3.1	List of Changes.....	4
3.2	Details of Changes .....	5
3.2.1	Improvement for help context of Peripheral Functions view, Code Preview view, Device List view, Device Top view in e <sup>2</sup> studio .....	5
3.2.2	Improvement for Code Generator name displayed in e <sup>2</sup> studio project generation UI .....	5
3.2.3	Removal of restrictions about an error dialog is displayed after the project is closed in e <sup>2</sup> studio.....	5
3.2.4	Removal of restrictions about DMA "Switch register set on transfer completion" setting can't be kept after returning from other GUI .....	6
3.2.5	Removal of restrictions about MTCLKA,B can't be selected for MTU6, MTU7 .....	7
3.2.6	Removal of restrictions about e <sup>2</sup> studio crashes when changing pin configuration .....	7
3.2.7	Improvement for Code Generator registration in e <sup>2</sup> studio .....	7
4.	History of Corrections Announced in Renesas Tool News .....	8
5.	Cautions .....	9
5.1	List for Cautions.....	9
5.2	Details for Cautions .....	10
5.2.1	Online Help.....	10
5.2.2	Coding rule of MISRA-C .....	10
	Revision History .....	14

## 1. Introduction

The Code Generator for RZ is a software tool to generate control programs (device driver programs) for peripheral modules (timers, UART, A/D, etc.). It generates device driver codes using user settings through GUI. Initialize code and API (Application Programming Interface) functions are provided. The following products are provided as code generator for RL78.

- Code Generator Plug-in (e<sup>2</sup> studio)
- AP4 for RZ

### 1.1 Product version

- e<sup>2</sup> studio Code Generator Plug-in 2.17.00
- AP4 for RZ 1.10.00

Group	Version
RZ/T1	V1.05.02.01

## 1.2 Operating environments

### 1.2.1 PC

- IBM PC/AT compatible (Windows® 10, Windows® 8.1)
- Processor: At least 1 GHz (the product supports hyper-threading and multi-core CPUs)
- Memory capacity: 2 GB or more is recommended. At least 1 GB (or 2 GB for 64-bit versions of Windows®) is required.
- Hard disk capacity: At least 200 MB available
- Display resolution: 1024x768 or higher; at least 65536 colors
- Required elements of the software environment other than the Windows OS: .NET Framework 4.5 plus a language pack

### 1.2.2 Development tools

#### 1.2.2.1 e<sup>2</sup> studio and AP4 for RZ

- Integrated development environment e2 studio (64-bit) from Renesas, 2020-10 or later
- GCC ARM Embedded 6.3.1.20170620
- GNUARM-NONE-EABI V16.01
- IAR Embedded Workbench for ARM V8.30 or later
- ARM Development Suite (DS-5™) V5.29.1 or later

#### 1.2.2.2 iodefinition file

Get iodefinition file from below.

- [iodefinition file for RZ/T1 Group](#)

## 2. Supported devices

The devices supported by the Code Generator for RZ are listed below.

Table 2-1. Supported devices

○: Support -: Not support

Group (HW Manual number)	PIN	Device name	e <sup>2</sup> studio	AP4
RZ/T1 Group (R01UH0483EJ0150)	176pin	R7S910001CFP, R7S910101CFP	○	○
	320pin	R7S910002CBG, R7S910102CBG, R7S910006CBG, R7S910106CBG, R7S910007CBG, R7S910107CBG, R7S910011CBG, R7S910111CBG, R7S910013CBG, R7S910113CBG, R7S910015CBG, R7S910115CBG, R7S910016CBG, R7S910116CBG, R7S910017CBG, R7S910117CBG, R7S910018CBG, R7S910118CBG, R7S910025CBG, R7S910125CBG, R7S910026CBG, R7S910126CBG, R7S910027CBG, R7S910127CBG, R7S910028CBG, R7S910128CBG, R7S910035CBG, R7S910135CBG, R7S910036CBG, R7S910136CBG	○	○

### 3. Changes

Describes the changes in this release of the Code Generator for RL78.

#### 3.1 List of Changes

Table 3-1. List of Points for Change

○: Applicable, /: Not applicable

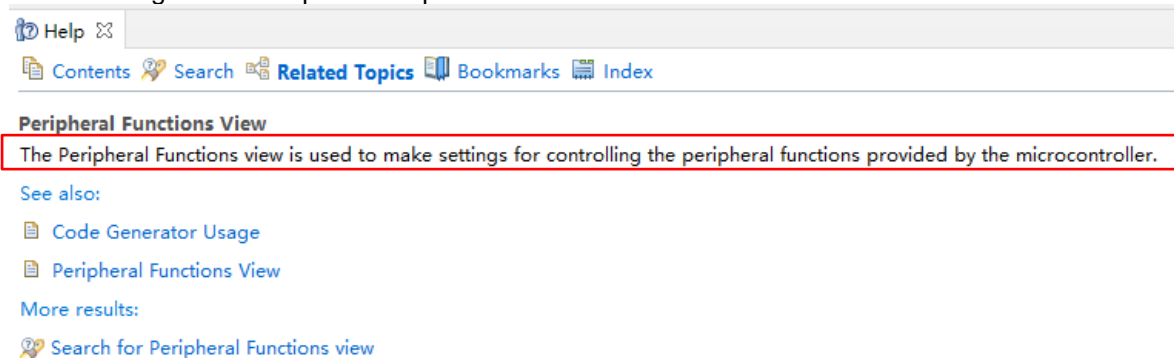
No	Description	Group
		RZ/T1
1	Improvement for help context for Peripheral Functions view, Code Preview view, Device List view, Device Top view in e <sup>2</sup> studio	○
2	Improvement for Code Generator name displayed in e <sup>2</sup> studio project generation UI	○
3	Removal of restrictions about an error dialog is displayed after the project is closed	○
4	Removal of restrictions about DMA "Switch register set on transfer completion" setting can't be kept after returning from other GUI	○
5	Removal of restrictions about MTCLKA, B can't be selected for MTU6, MTU7	○
6	Removal of restrictions about e <sup>2</sup> studio crashes when changing pin configuration	○
7	Improvement for Code Generator registration in e <sup>2</sup> studio	○

## 3.2 Details of Changes

### 3.2.1 Improvement for help context of Peripheral Functions view, Code Preview view, Device List view, Device Top view in e<sup>2</sup> studio

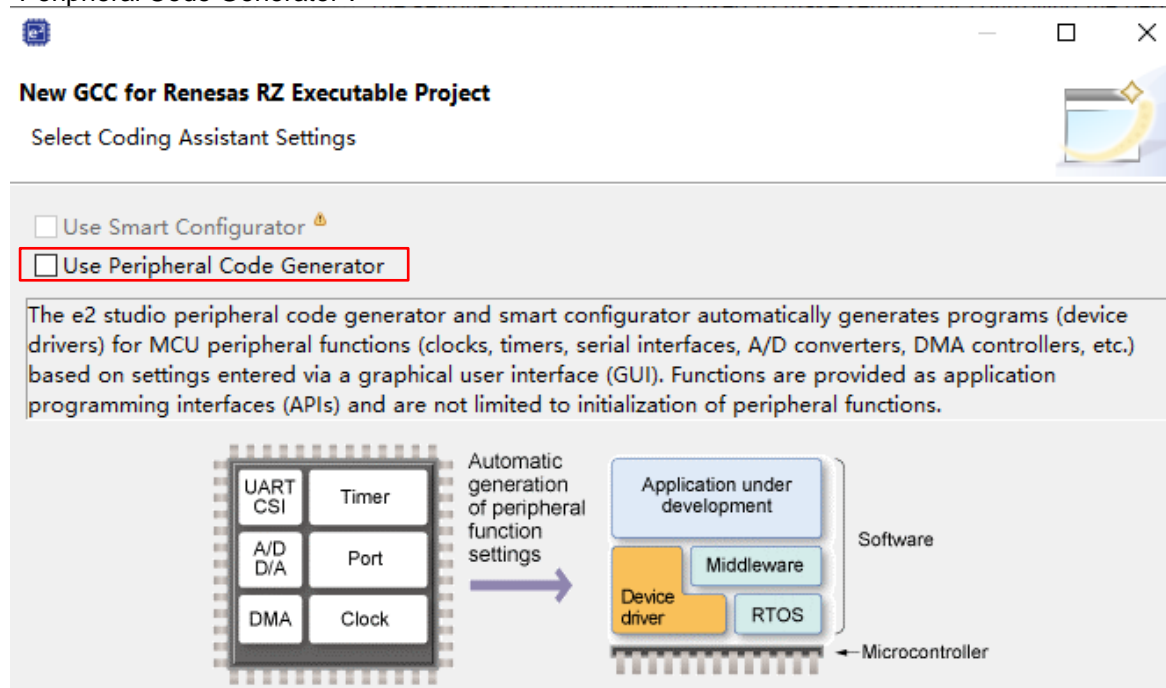
Modified the content of e<sup>2</sup> studio help context of Peripheral Functions view, Code Preview view, Device List view, Device Top view.

The following is an example of Peripheral Functions view:



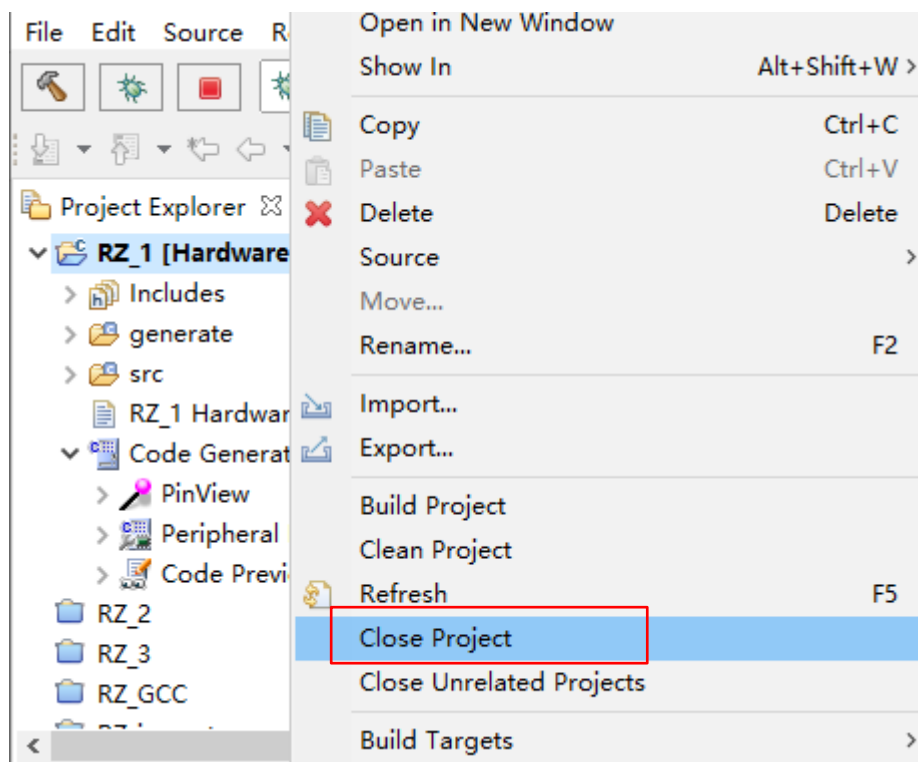
### 3.2.2 Improvement for Code Generator name displayed in e<sup>2</sup> studio project generation UI

Change Code Generator name in e<sup>2</sup> studio project generation UI from "Code Generator" to "Peripheral Code Generator".

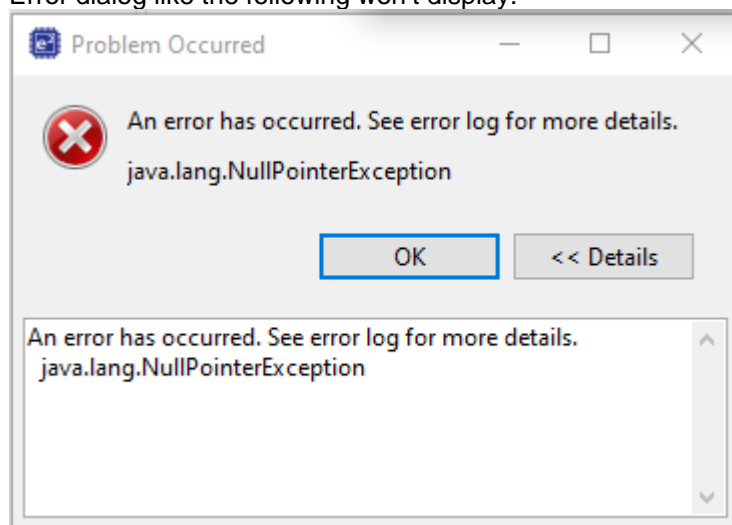


### 3.2.3 Removal of restrictions about an error dialog is displayed after the project is closed in e<sup>2</sup> studio.

Corrected errors so that there is no error dialog displayed after the project is closed by right-click menu on e<sup>2</sup> studio project tree.



Error dialog like the following won't display.



### 3.2.4 Removal of restrictions about DMA "Switch register set on transfer completion" setting can't be kept after returning from other GUI

Corrected errors so that DMA "Switch register set on transfer completion" setting can be kept after returning from other GUI

Please refer to the document number [R20TS0603EJ0100](#) of RENESAS TOOL NEWS.

### 3.2.5 Removal of restrictions about MTCLKA,B can't be selected for MTU6, MTU7

Corrected errors so that MTCLKA,B can be selected as the count clock of MTU6, MTU7.

**General setting** MTU0 MTU1 MTU2 MTU3 MTU4 MTU5 MTU6 MTU7 MTU8

– Function setting –

MTU0	Unused
MTU1	Unused
MTU2	Unused
MTU3	Unused
MTU4	Unused
MTU5	Unused
MTU6	Normal mode
MTU7	Normal mode
MTU8	Unused

– MTU1 32-bit phase counting mode setting –

☐ Enable 32-bit phase counting mode

External input phase clock select MTCLKA and MTCLKB are selected

– MTU6, MTU7 timer synchronous clearing setting –

☐ Enable counter synchronous clearing at MTU0/TGRA input capture/compare match

☐ Enable counter synchronous clearing at MTU0/TGRB input capture/compare match

☐ Enable counter synchronous clearing at MTU0/TGRC input capture/compare match

☐ Enable counter synchronous clearing at MTU0/TGRD input capture/compare match

☐ Enable counter synchronous clearing at MTU1/TGRA input capture/compare match

☐ Enable counter synchronous clearing at MTU1/TGRB input capture/compare match

☐ Enable counter synchronous clearing at MTU2/TGRA input capture/compare match

☐ Enable counter synchronous clearing at MTU2/TGRB input capture/compare match

– External clock pin setting –

<input type="checkbox"/> MTCLKA pin	<input type="checkbox"/> Use noise filter
<input type="checkbox"/> MTCLKB pin	<input type="checkbox"/> Use noise filter

### 3.2.6 Removal of restrictions about e<sup>2</sup> studio crashes when changing pin configuration

Corrected errors so that there is no crash on e<sup>2</sup> studio when changing pin assignments in the "Pin Function" view in the "Device List View" window

### 3.2.7 Improvement for Code Generator registration in e<sup>2</sup> studio

Improved the specification of Code Generator registration about:

- Removal of the prompting window to user for admin rights, and Code Generator is only registered to current user.
- Add a system property which can completely disable all Code Generator functionality and registration activity

#### 4. History of Corrections Announced in Renesas Tool News

This section is a summary of corrections announced in Renesas Tool News.

Issue Date	Document No.	Description	Device Concerned	Fixed version
May. 16, 2015	<a href="#">150516/tn2</a>	I2C Bus Interface (RIICa)	RZ/T1	AP4 V1.01.00
Nov. 10, 2015	<a href="#">151101/tn3</a>	Setting to permit or prohibit suspension of transfer in response to the reception of NACK over the I2C bus interface (RIIC)	RZ/T1	e <sup>2</sup> studio V2.08.0 AP4 V1.02.00
Mar.01, 2017	<a href="#">R20TS014</a> <a href="#">1EJ0100</a>	1. Transfer-completed interrupt detection type for DMA controllers	RZ/T1	e <sup>2</sup> studio V2.12.0 AP4 V1.06.00
		2. Using DMA controllers with the serial communications interface with FIFO (SCIFA)	RZ/T1	
Apr.16, 2017	<a href="#">R20TS016</a> <a href="#">2EJ0100</a>	1. Prohibition of reading from and writing to registers protected from programming by mistake in multi-function timer pulse unit 3 (MTU3a)	RZ/T1	e <sup>2</sup> studio V2.12.0 AP4 V1.06.00
Feb. 02, 2019	<a href="#">R20TS039</a> <a href="#">8EJ0100</a>	Point for caution regarding the write value of RSPI status register (SPSR)	RZ/T1	e <sup>2</sup> studio V2.15.0 AP4 V1.09.00
Apr. 16, 2019	<a href="#">R20TS042</a> <a href="#">2EJ0100</a>	Using link mode of DMAC	RZ/T1	e <sup>2</sup> studio V2.15.0 AP4 V1.09.00
Dec. 16, 2019	<a href="#">R20TS052</a> <a href="#">5EJ0100</a>	Regarding writing 0 to the timer dead time enable register of the multi-function timer pulse unit 3 (TU3a)	RZ/T1	e <sup>2</sup> studio V2.15.0 AP4 V1.09.00
Aug. 01, 2020	<a href="#">R20TS060</a> <a href="#">3EJ0100</a>	DMA "Switch register set on transfer completion" setting can't be kept after returning from other GUI	RZ/T1	e <sup>2</sup> studio V2.17.0 AP4 V1.10.00



## 5. Cautions

This section describes points for caution regarding the Code Generator for RZ.

### 5.1 List for Cautions

Table 5-1. List of Points for Caution

○: Applicable, /: Not applicable

No	Description	Group
		RZ/T1
1	Online Help	○
2	Setting peripheral functions using pin view	○

Notes: 1. These version numbers are stated in the file headers of the source code which is generated by the code generator.

## 5.2 Details for Cautions

### 5.2.1 Online Help

AP4 for RZ is not supporting online help.

### 5.2.2 Coding rule of MISRA-C

Pin View shows pin settings set by AP4 and allows user to configure pin settings.

Pin View has two view; Device List View and Device Top View and the two views are linked, so that settings can be made in either of them.

#### Device List View

Device list View shows the pin settings by the table style. Device list View has two lists; Pin Number and Pin Function.

#### Pin Number List

Pin Number List shows all assigned pins sorted by the pin number. If pins have multiple functions, Pin Number List allows to user to configure the functions.

Pin Number	Pin Name	Selected Function	Pin Direction	Pin Remarks
A1	VSS	VSS	-	
A2	PC2/ ETH0_TXC/ ETH1_RX...	Not assigned	-	
A3	PJ3/ IRQ11/ ETH0_TXD0/ ...	Not assigned	-	
A4	PJ1/ ETH0_TXD2/ CATLE...	Not assigned	-	
A5	PF7/ IRQ7/ A25/ ETH0_TX...	Not assigned	-	
A6	PB4/ A24/ ETH1_COL/ ET...	Not assigned	-	
A7	PB0/ ETH1_RXDV/ MTCLK...	Not assigned	-	
A8	PC0/ WAIT#/ ETH1_RXD2/...	Not assigned	-	

If pins have multiple functions, User can select pin functions by configuring the "Selected Function". For example, when IRQ7 has not been set up in CG and user set A5 as IRQ7, the following warning is shown.

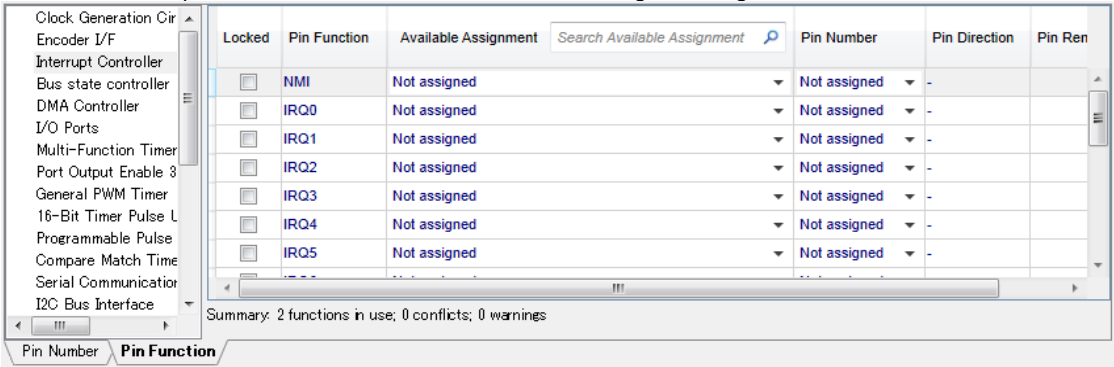
A5	PF7/ IRQ7/ A25/ ETH0_TX...	IRQ7	-	Function is not enabled in peripheral configuration.
----	----------------------------	------	---	--

After that, IRQ7 has been set in Peripheral Functions (Interrupt Controller), this warning is disappeared and IRQ7 is shown in Selected Function.

A5	PF7/ IRQ7/ A25/ ETH0_TX...	IRQ7	In	
----	----------------------------	------	----	--

Pin Function List

Pin Function List shows which pins are used by corresponding peripheral module. If multiple pins are selectable for a specific function, the allocation can be changed through this list.



Pin Function List allows user to change a specific pin which has been to set by CG. For example, IRQ7 has been set by CG, an available pin are automatically set.

IRQ7	PF7/ IRQ7/ A25/ ETH0_TXE...	A5	In	
------	-----------------------------	----	----	--

User can change the pin to another available pins by selection “Pin Assignment” or “Pin Number”.

IRQ7	P97/ AN107/ IRQ7/ A25/ AD...	E18	In	
------	------------------------------	-----	----	--

If a pin which has been already set as other function is selected, the warning is shown and the selected pin is not assigned.

IRQ7	Not assigned	Not assigned	In	Conflict detected in peripheral configuration.
------	--------------	--------------	----	--

Save Device List View



Clicking the icon above in Device List View, User can save the current pin settings as csv the format.

Lock Pin Settings



Clicking the icon above in Device List View, User can lock the current pin settings and be free of influence from other peripherals.

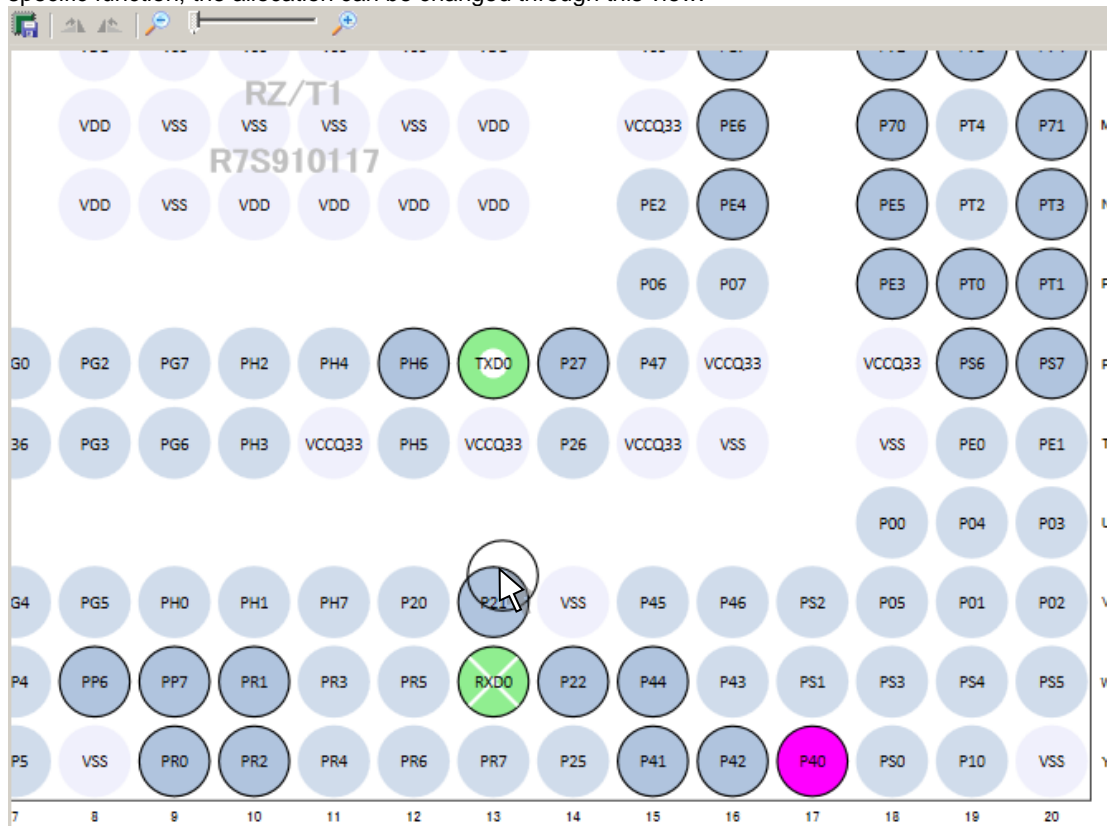
Generate Code



Clicking the icon above in Device List View, code generation can be executed.

## Device Top View

Device Top View shows which pins are used by corresponding peripheral module in the package view. If pins have multiple functions, this view allows to user to configure the functions and if multiple pins selectable for a specific function, the allocation can be changed through this view.



## Highlight Pins by Peripheral



Device Top View highlights the group of pins that belongs to the active CG peripheral functions. The figure above shows Device Top View when Serial Communications Interface with FIFO is being selected by CG.

## Assigned Pin (Input)



Shows assigned pins (Input).

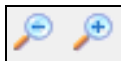
## Assigned pin (Output)



Shows assigned pins (Output).

**Alternative pin selection**

If user holds down the “CTRL” key and use mouse “left click” on the pin in use, the other pins with this same function will change color. For example, R13 is assigned to the function “TXD0”, if user “CTRL + Click” to pin “TXD0”, the pin Y17 (P40) changes color, because it contains the same function “TXD0”. At the same time, while the “CTRL” key is hold down, if user drag and drops the pin to Y17 (P40). Y17 (P40) will be assigned to in use as “TXD0”.

**Zoom**

Device Top View supports the zoom function by slider controls. After clicking the device top view, user can do this by mouse-wheel.

**Drag and Move**

Device Top View supports mouse drags actions. Hold down mouse left button on the view and move will drag the view around.

**Save Device Top View**

Clicking the icon above in Device Top View, User can save the view as PNG format.

**Configure Pin View Color**

Pin View supports for user to change color, through the property window.

Right click on the Device Top View on project tree, the property window will pop up a right click menu.

**Revision History**

Rev.	Date	Description	
		Page	Summary
1.00	Jan 20, 2020	-	First edition issued
1.01	Aug.01.2020	3	Correction for error of 'HW Manual number' in Table 2-1 Error: R01UH0483EJ0160 Correction: R01UH0483EJ0110
1.02	Oct.06.2020	3	Update 'HW Manual number' in Table 2-1 to R01UH0483EJ0150
		4	Update "3. Changes"
		8	Update "4. History of Corrections Announced in Renesas Tool News"

# General Precautions in the Handling of Microprocessing Unit and Microcontroller Unit Products

The following usage notes are applicable to all Microprocessing unit and Microcontroller unit products from Renesas. For detailed usage notes on the products covered by this document, refer to the relevant sections of the document as well as any technical updates that have been issued for the products.

## 1. Precaution against Electrostatic Discharge (ESD)

A strong electrical field, when exposed to a CMOS device, can cause destruction of the gate oxide and ultimately degrade the device operation. Steps must be taken to stop the generation of static electricity as much as possible, and quickly dissipate it when it occurs. Environmental control must be adequate. When it is dry, a humidifier should be used. This is recommended to avoid using insulators that can easily build up static electricity. Semiconductor devices must be stored and transported in an anti-static container, static shielding bag or conductive material. All test and measurement tools including work benches and floors must be grounded. The operator must also be grounded using a wrist strap. Semiconductor devices must not be touched with bare hands. Similar precautions must be taken for printed circuit boards with mounted semiconductor devices.

## 2. Processing at power-on

The state of the product is undefined at the time when power is supplied. The states of internal circuits in the LSI are indeterminate and the states of register settings and pins are undefined at the time when power is supplied. In a finished product where the reset signal is applied to the external reset pin, the states of pins are not guaranteed from the time when power is supplied until the reset process is completed. In a similar way, the states of pins in a product that is reset by an on-chip power-on reset function are not guaranteed from the time when power is supplied until the power reaches the level at which resetting is specified.

## 3. Input of signal during power-off state

Do not input signals or an I/O pull-up power supply while the device is powered off. The current injection that results from input of such a signal or I/O pull-up power supply may cause malfunction and the abnormal current that passes in the device at this time may cause degradation of internal elements. Follow the guideline for input signal during power-off state as described in your product documentation.

## 4. Handling of unused pins

Handle unused pins in accordance with the directions given under handling of unused pins in the manual. The input pins of CMOS products are generally in the high-impedance state. In operation with an unused pin in the open-circuit state, extra electromagnetic noise is induced in the vicinity of the LSI, an associated shoot-through current flows internally, and malfunctions occur due to the false recognition of the pin state as an input signal become possible.

## 5. Clock signals

After applying a reset, only release the reset line after the operating clock signal becomes stable. When switching the clock signal during program execution, wait until the target clock signal is stabilized. When the clock signal is generated with an external resonator or from an external oscillator during a reset, ensure that the reset line is only released after full stabilization of the clock signal. Additionally, when switching to a clock signal produced with an external resonator or by an external oscillator while program execution is in progress, wait until the target clock signal is stable.

## 6. Voltage application waveform at input pin

Waveform distortion due to input noise or a reflected wave may cause malfunction. If the input of the CMOS device stays in the area between  $V_{IL}$  (Max.) and  $V_{IH}$  (Min.) due to noise, for example, the device may malfunction. Take care to prevent chattering noise from entering the device when the input level is fixed, and also in the transition period when the input level passes through the area between  $V_{IL}$  (Max.) and  $V_{IH}$  (Min.).

## 7. Prohibition of access to reserved addresses

Access to reserved addresses is prohibited. The reserved addresses are provided for possible future expansion of functions. Do not access these addresses as the correct operation of the LSI is not guaranteed.

## 8. Differences between products

Before changing from one product to another, for example to a product with a different part number, confirm that the change will not lead to problems. The characteristics of a microprocessing unit or microcontroller unit products in the same group but having a different part number might differ in terms of internal memory capacity, layout pattern, and other factors, which can affect the ranges of electrical characteristics, such as characteristic values, operating margins, immunity to noise, and amount of radiated noise. When changing to a product with a different part number, implement a system-evaluation test for the given product.

## Notice

1. Descriptions of circuits, software and other related information in this document are provided only to illustrate the operation of semiconductor products and application examples. You are fully responsible for the incorporation or any other use of the circuits, software, and information in the design of your product or system. Renesas Electronics disclaims any and all liability for any losses and damages incurred by you or third parties arising from the use of these circuits, software, or information.
2. Renesas Electronics hereby expressly disclaims any warranties against and liability for infringement or any other claims involving patents, copyrights, or other intellectual property rights of third parties, by or arising from the use of Renesas Electronics products or technical information described in this document, including but not limited to, the product data, drawings, charts, programs, algorithms, and application examples.
3. No license, express, implied or otherwise, is granted hereby under any patents, copyrights or other intellectual property rights of Renesas Electronics or others.
4. You shall not alter, modify, copy, or reverse engineer any Renesas Electronics product, whether in whole or in part. Renesas Electronics disclaims any and all liability for any losses or damages incurred by you or third parties arising from such alteration, modification, copying or reverse engineering.
5. Renesas Electronics products are classified according to the following two quality grades: "Standard" and "High Quality". The intended applications for each Renesas Electronics product depends on the product's quality grade, as indicated below.

"Standard": Computers; office equipment; communications equipment; test and measurement equipment; audio and visual equipment; home electronic appliances; machine tools; personal electronic equipment; industrial robots; etc.

"High Quality": Transportation equipment (automobiles, trains, ships, etc.); traffic control (traffic lights); large-scale communication equipment; key financial terminal systems; safety control equipment; etc.

Unless expressly designated as a high reliability product or a product for harsh environments in a Renesas Electronics data sheet or other Renesas Electronics document, Renesas Electronics products are not intended or authorized for use in products or systems that may pose a direct threat to human life or bodily injury (artificial life support devices or systems; surgical implantations; etc.), or may cause serious property damage (space system; undersea repeaters; nuclear power control systems; aircraft control systems; key plant systems; military equipment; etc.). Renesas Electronics disclaims any and all liability for any damages or losses incurred by you or any third parties arising from the use of any Renesas Electronics product that is inconsistent with any Renesas Electronics data sheet, user's manual or other Renesas Electronics document.

6. When using Renesas Electronics products, refer to the latest product information (data sheets, user's manuals, application notes, "General Notes for Handling and Using Semiconductor Devices" in the reliability handbook, etc.), and ensure that usage conditions are within the ranges specified by Renesas Electronics with respect to maximum ratings, operating power supply voltage range, heat dissipation characteristics, installation, etc. Renesas Electronics disclaims any and all liability for any malfunctions, failure or accident arising out of the use of Renesas Electronics products outside of such specified ranges.
7. Although Renesas Electronics endeavors to improve the quality and reliability of Renesas Electronics products, semiconductor products have specific characteristics, such as the occurrence of failure at a certain rate and malfunctions under certain use conditions. Unless designated as a high reliability product or a product for harsh environments in a Renesas Electronics data sheet or other Renesas Electronics document, Renesas Electronics products are not subject to radiation resistance design. You are responsible for implementing safety measures to guard against the possibility of bodily injury, injury or damage caused by fire, and/or danger to the public in the event of a failure or malfunction of Renesas Electronics products, such as safety design for hardware and software, including but not limited to redundancy, fire control and malfunction prevention, appropriate treatment for aging degradation or any other appropriate measures. Because the evaluation of microcomputer software alone is very difficult and impractical, you are responsible for evaluating the safety of the final products or systems manufactured by you.
8. Please contact a Renesas Electronics sales office for details as to environmental matters such as the environmental compatibility of each Renesas Electronics product. You are responsible for carefully and sufficiently investigating applicable laws and regulations that regulate the inclusion or use of controlled substances, including without limitation, the EU RoHS Directive, and using Renesas Electronics products in compliance with all these applicable laws and regulations. Renesas Electronics disclaims any and all liability for damages or losses occurring as a result of your noncompliance with applicable laws and regulations.
9. Renesas Electronics products and technologies shall not be used for or incorporated into any products or systems whose manufacture, use, or sale is prohibited under any applicable domestic or foreign laws or regulations. You shall comply with any applicable export control laws and regulations promulgated and administered by the governments of any countries asserting jurisdiction over the parties or transactions.
10. It is the responsibility of the buyer or distributor of Renesas Electronics products, or any other party who distributes, disposes of, or otherwise sells or transfers the product to a third party, to notify such third party in advance of the contents and conditions set forth in this document.
11. This document shall not be reprinted, reproduced or duplicated in any form, in whole or in part, without prior written consent of Renesas Electronics.
12. Please contact a Renesas Electronics sales office if you have any questions regarding the information contained in this document or Renesas Electronics products.

(Note1) "Renesas Electronics" as used in this document means Renesas Electronics Corporation and also includes its directly or indirectly controlled subsidiaries.

(Note2) "Renesas Electronics product(s)" means any product developed or manufactured by or for Renesas Electronics.

(Rev.4.0-1 November 2017)

## Corporate Headquarters

TOYOSU FORESIA, 3-2-24 Toyosu,  
Koto-ku, Tokyo 135-0061, Japan  
[www.renesas.com](http://www.renesas.com)

## Trademarks

Renesas and the Renesas logo are trademarks of Renesas Electronics Corporation. All trademarks and registered trademarks are the property of their respective owners.

## Contact information

For further information on a product, technology, the most up-to-date version of a document, or your nearest sales office, please visit:  
[www.renesas.com/contact/](http://www.renesas.com/contact/)