

Technical Data of Ceramic Resonator

MURATA Part No.: CSTCR4M00G15B( )-R0

Applied to HD6437049

Note: Suffix indicates packaging style.

·Lead type

-A0 : Flat pack package(Ho=18mm)

-B0 : Bulk

·SMD type

-R0 : Plastic tape package( $\varnothing$ =180mm)





-B0 : Bulk

**TOYAMA MURATA MANUFACTURING CO., LTD.**

Product Engineering Service Section I

Planning Department

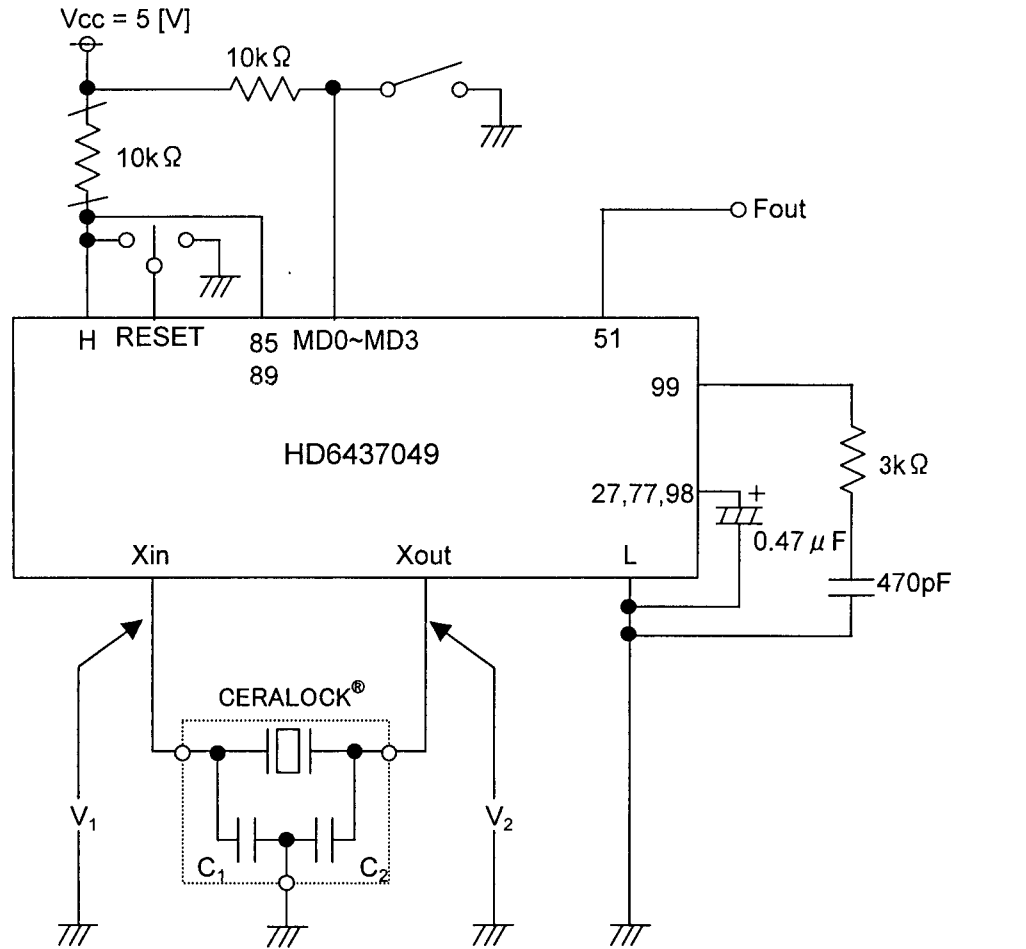
Piezoelectric Components Group

Approved by	Checked by	Checked by	Issued by	Issued Date	Data No.
 K.Kuramoto	 K.Maruno	 K.Masaki	 K.Tagata	Feb 3, 2003	TCD-03-0133

## Contents

1.	Test Circuit	1
2.	Temperature Characteristics of Oscillating Frequency, Oscillating Voltage	2
3.	Rise Time, Oscillating Frequency, Oscillating Voltage vs Vcc Characteristics	3

Test Circuit

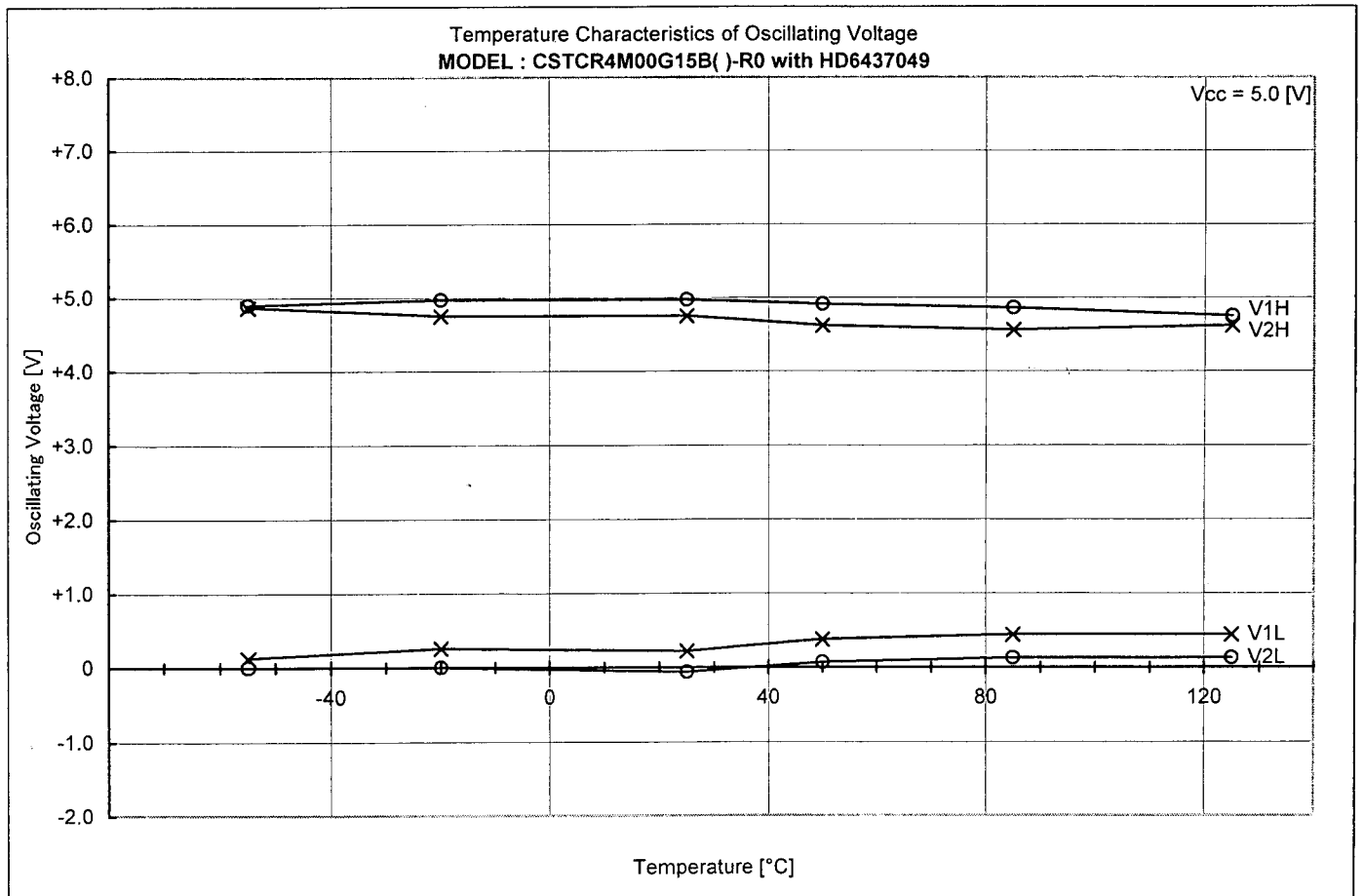
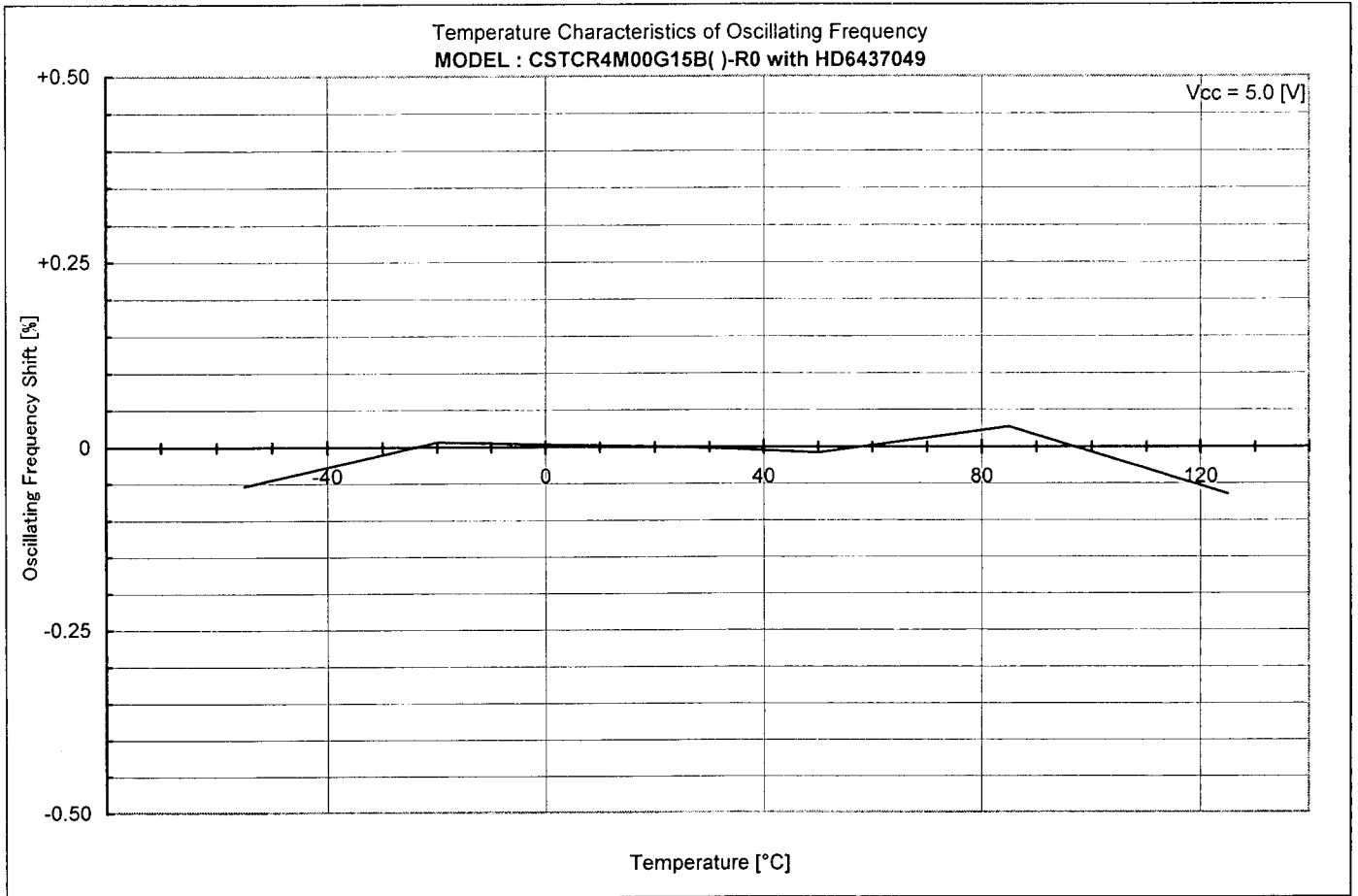


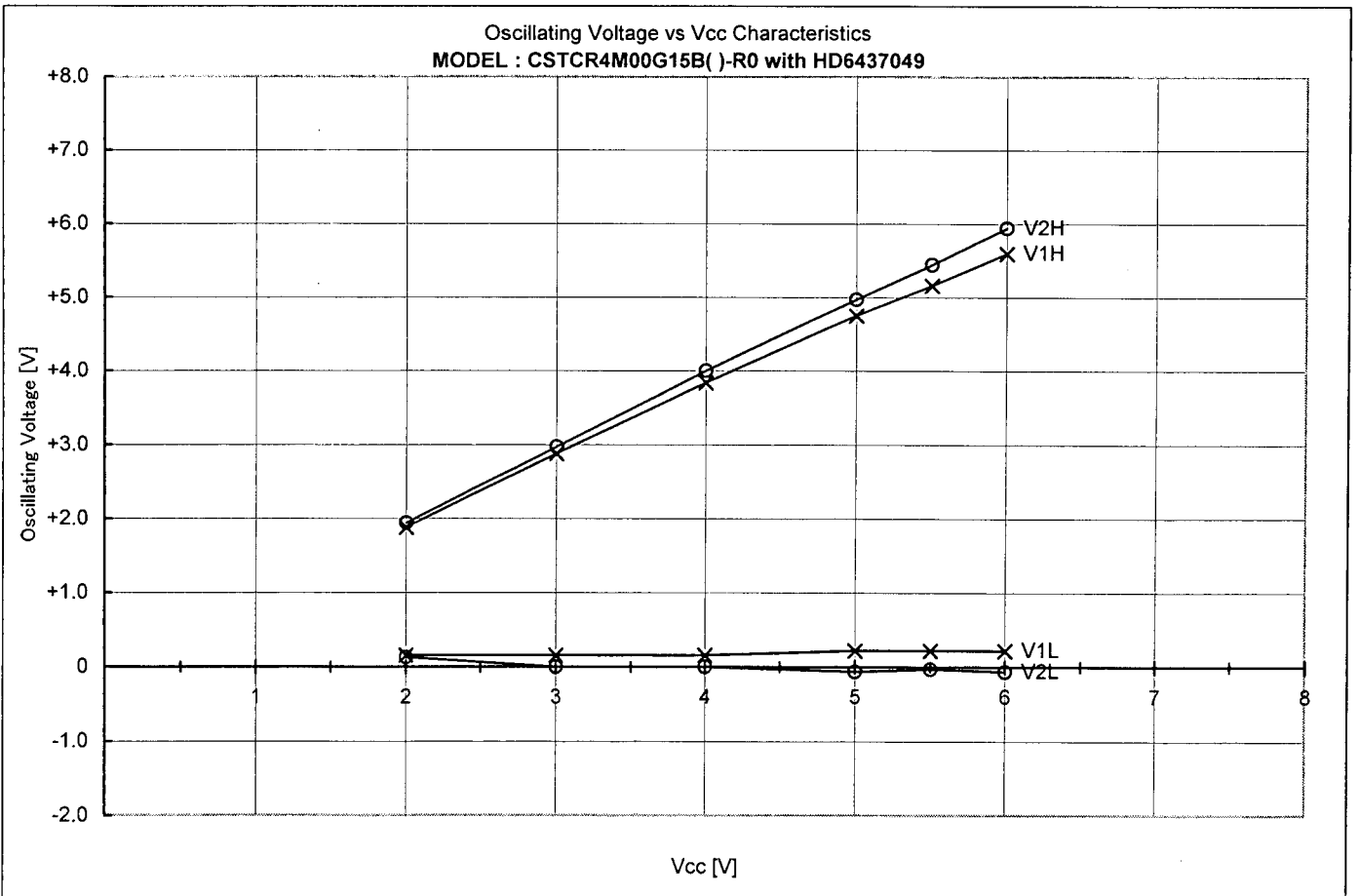
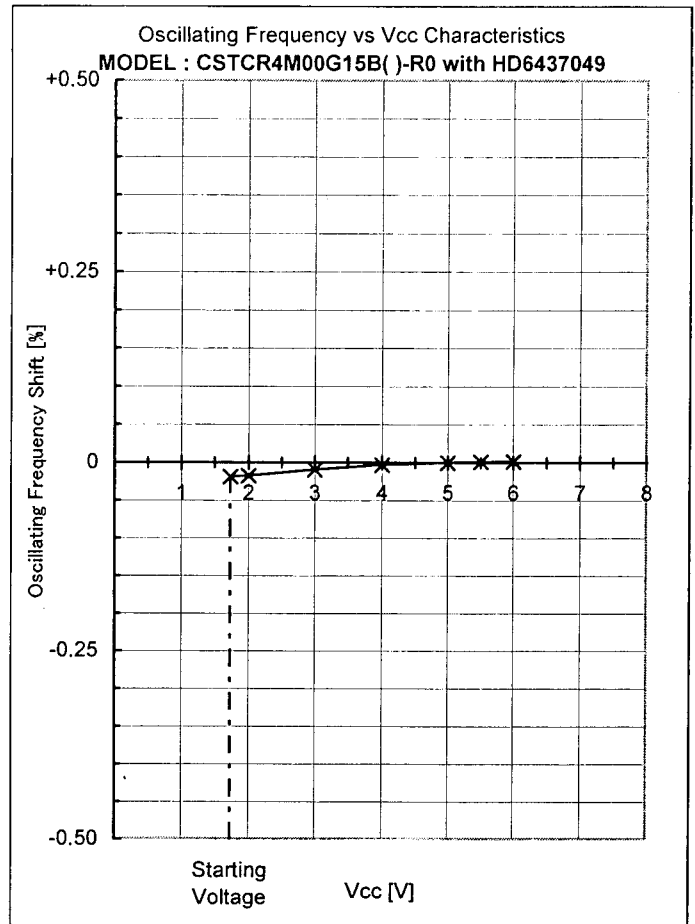
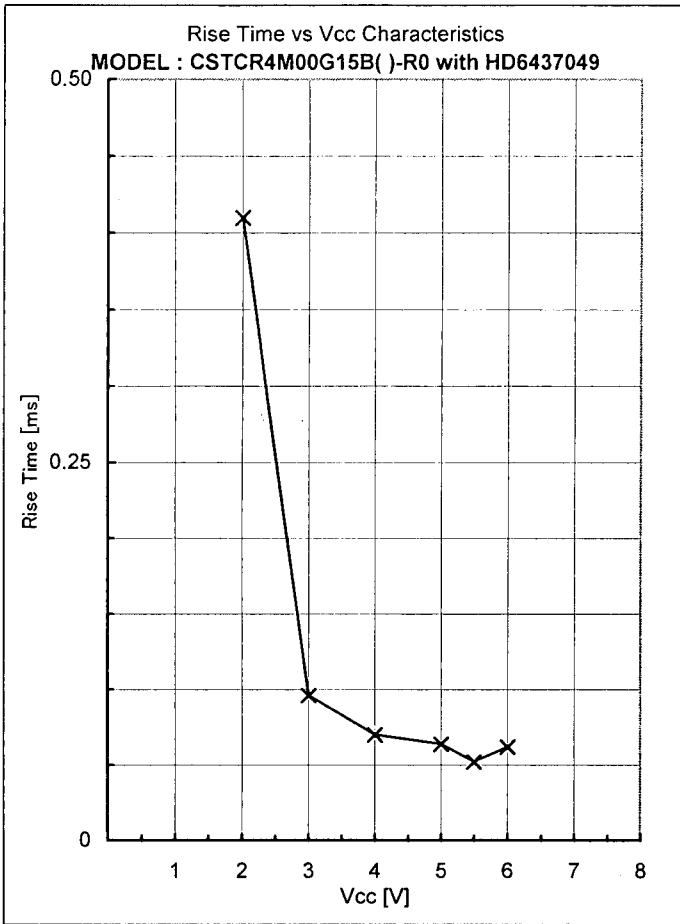
RESET : 87(L)  
 MD0 : 95(L)  
 MD1 : 94(L)  
 MD2 : 93(L)  
 MD3 : 91(L)

Xin : 96  
 Xout : 97  
 H : 11,15,16,33,46,53,72,83,84  
 L : 13,29~32,34~45,47~50,74,82,100

Recommended Value

CERALOCK® : CSTCR4M00G15B( )-R0  
 Vcc = 4.0 to 5.5 [V]  
 C1 = 39 [pF] (Typ.)  
 C2 = 39 [pF] (Typ.)  
 Ta = -40 to 85 [°C]







## Appendixes

4.	Comparison Table	4
5.	Frequency Correlation Data	5

**Comparison Table**

IC : No	V1H [V]	V1L [V]	V1p-p [V]	V2H [V]	V2L [V]	V2p-p [V]	Fosc [kHz]	Trise [ms]	Vstart [V]
006	4.69	0.22	4.47	4.97	0.00	4.97	4001.915	0.058	1.77
007	4.75	0.22	4.53	4.97	0.00	4.97	4001.948	0.068	1.76
008	4.69	0.22	4.47	4.97	-0.09	5.06	4002.029	0.062	1.73

Ref.

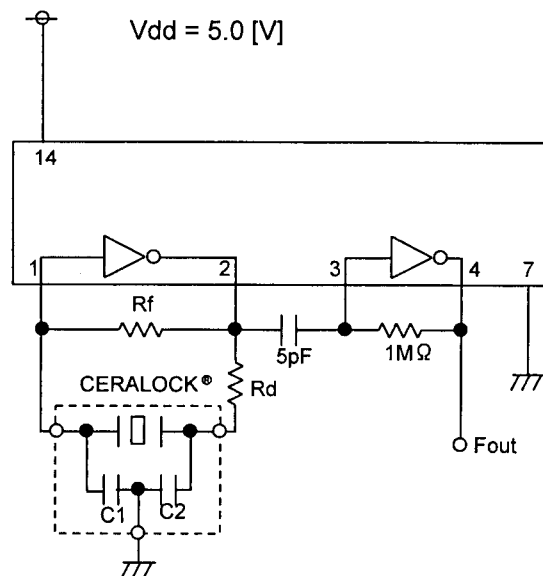
Performance described page 2 to 3 were measured with IC No. 008



### Frequency Correlation Data

Sample No.	HD6437049 Fosc [kHz]	TC74HCU04AP Fosc [kHz]	Shift [%]
1	4002.035	4013.096	-0.2756
2	4000.662	4012.324	-0.2907
3	4001.453	4011.470	-0.2497
4	4000.199	4011.885	-0.2913
5	4001.069	4011.285	-0.2547
$\bar{X}$	4001.083	4012.012	-0.2724

### muRata Standard Circuit



CERALOCK® : CSTCR4M00G15B( )-R0

C1 = 39 [pF]

C2 = 39 [pF]

Rf = 1 [Mohm]

Rd = 680 [ohm]

