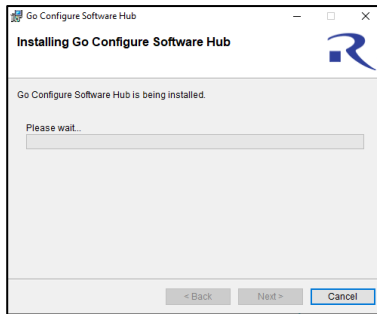


## GreenPAK Lite Development Kit Quick Start Guide



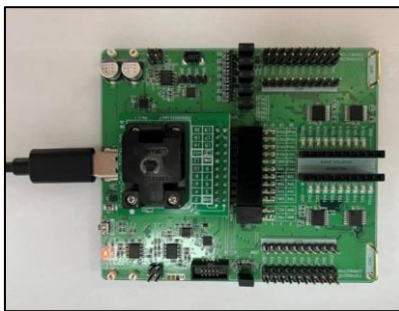
### 1. Install Go Configure Software Hub

Download and install the latest Go Configure Software Hub version from <https://www.renesas.com/software-tool/go-configure-software-hub>.



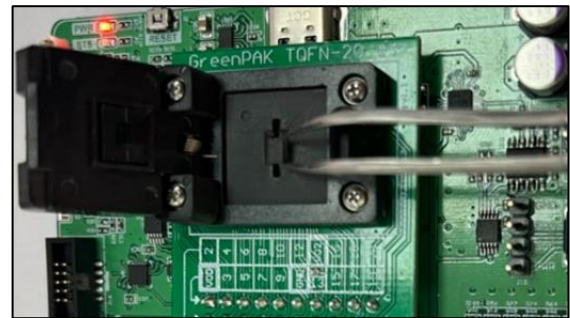
### 2. Create Your Project

Start Go Configure Software Hub and select the GreenPAK device which best suits your design. You are now ready to start developing using all available components including LUTs, DFFs, DLYs, and much more.



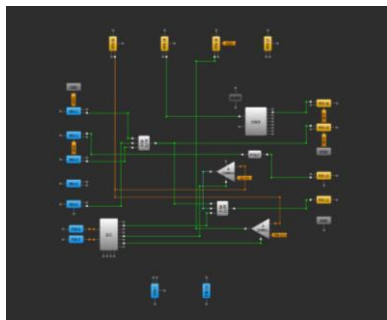
### 3. Prepare Development Board

Use the included USB-C cable to connect the GreenPAK Lite Development Board to your Windows, MacOS, or Linux based computer. Then install the Socket Adapter.

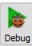


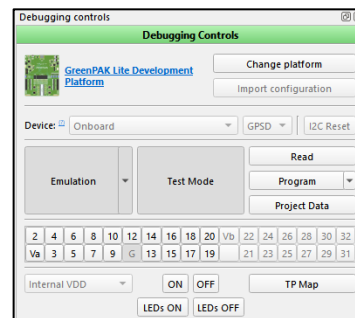
### 4. Place the Chip

Use tweezers to place one GreenPAK chip in the socket. Make sure that the PIN1 marker on the socket corresponds to first PIN dot on the chip. Close the socket.



### 5. Use Emulation Tool

Click the toolbar icon  to start the GreenPAK Emulation Tool. Choose GreenPAK Lite Development board as your platform. The schematic on the emulator control window represents the actual controls, which are present on the GreenPAK Lite Board.



### 6. Emulate or Program the Chip

Press the “Emulation” button to load your project code onto the chip. At this point the chip will operate according to the project code. Emulation can be performed multiple times, even on programmed chips. Press the “Emulation” button again to exit the emulation mode. Press the “Program” button to program the chip.