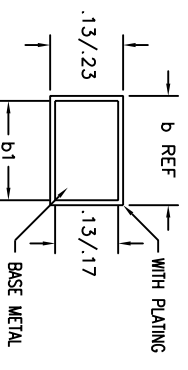
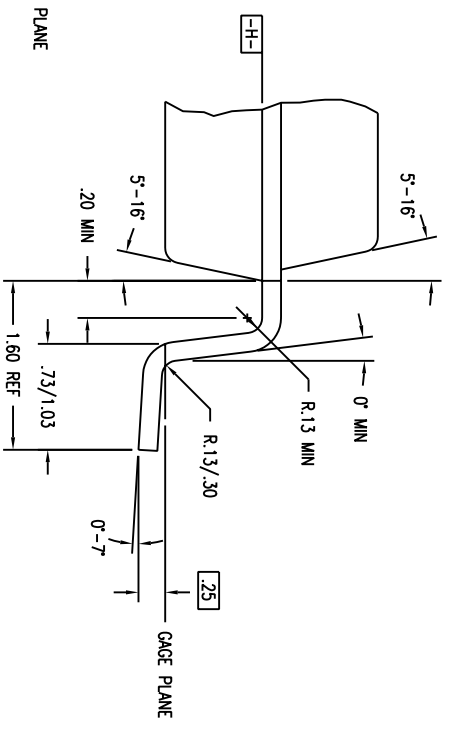
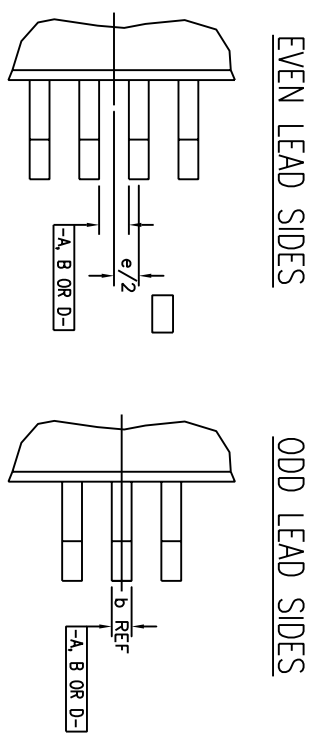
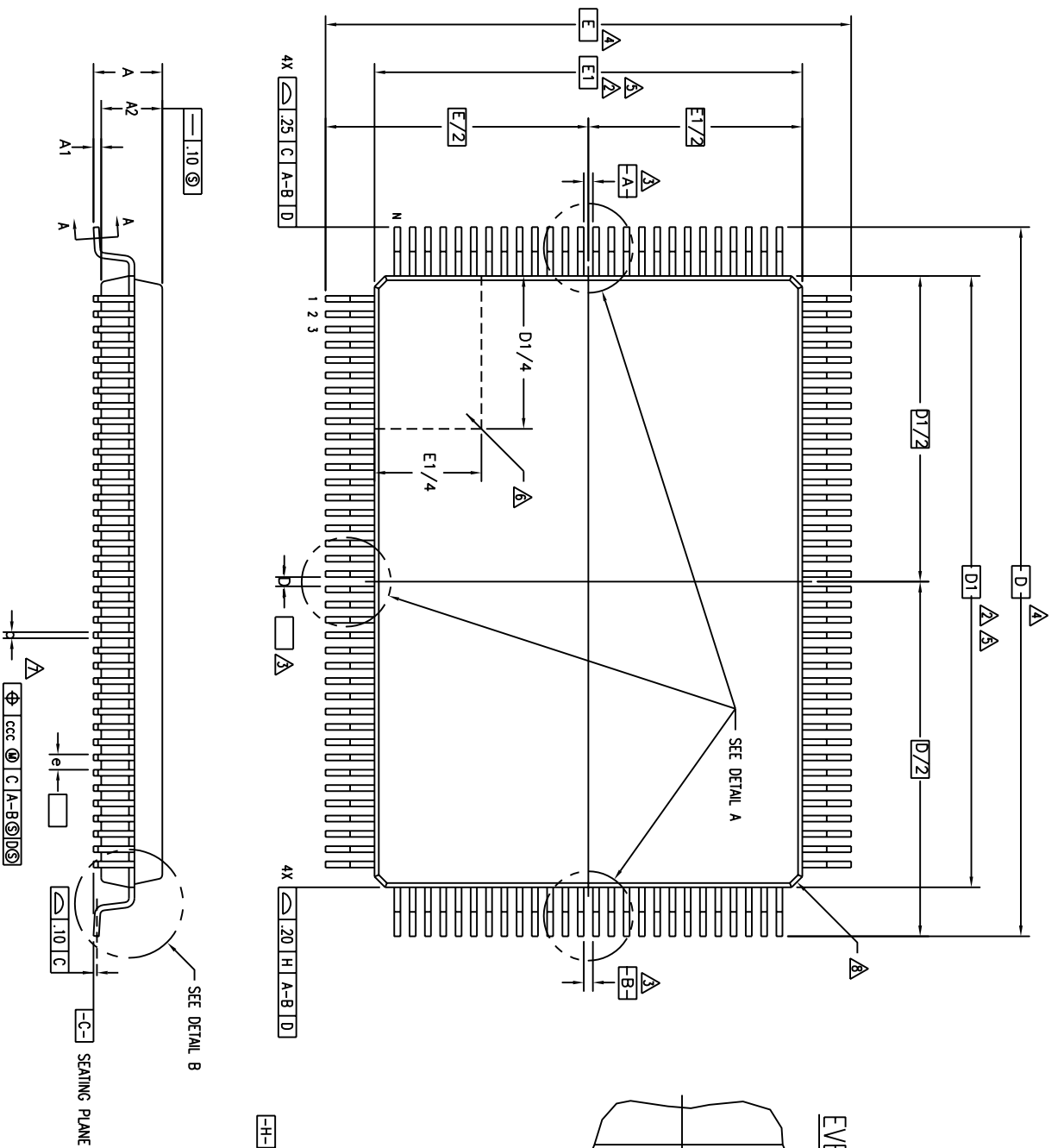


REVISIONS				
DCN	REV	DESCRIPTION	DATE	APPROVED
28838	00	INITIAL RELEASE	04/15/96	TU VU
	085	OBS DUE TO INACTIVE STATUS	8/29/03	TU VU
	01	REVIVE FROM OBS	10/31/03	TU VU
	02	ADD "GREEN" PXC NOMENCLATURE	11/12/04	TU VU



SECTION A-A

TOLERANCES
UNLESS SPECIFIED
DECIMAL
ANGULAR
F

IDT™ 2975 Stender Way
Santo Clara, CA 95054
PHONE: (408) 727-6116
FAX: (408) 492-8674

WWW.IDT.COM

APPROVALS
DATE
DRAWN
CHECKED

TITLE
PXC/PYG PACKAGE OUTLINE (RECT)
14.0 X 20.0 X 2.7 mm POF P

SIZE
DRAWING No.
PSC-4057

REV
02

DO NOT SCALE DRAWING

SHEET 1 OF 2

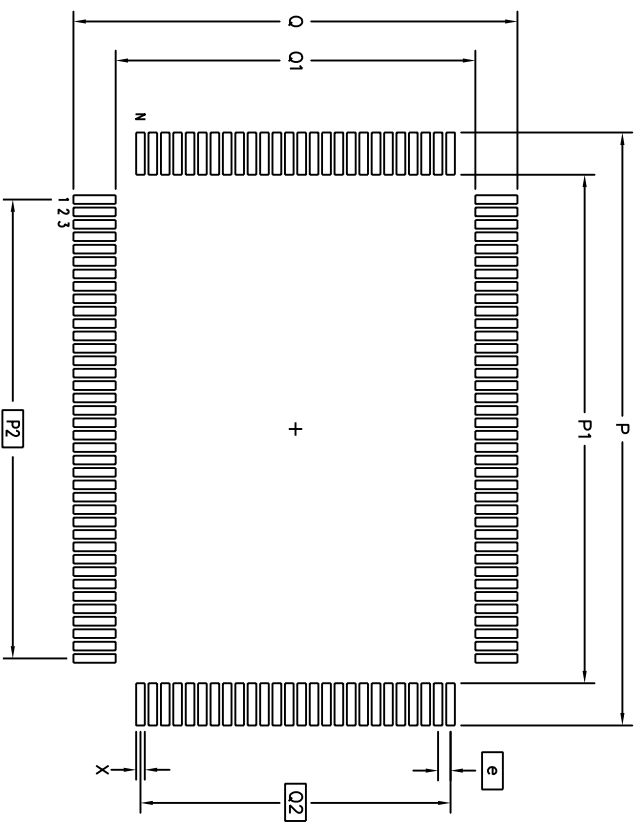
REVISIONS				
DCN	REV	DESCRIPTION	DATE	APPROVED
28838	00	INITIAL RELEASE	04/15/96	TU VU
	00S	OBS DUE TO INACTIVE STATUS	8/29/03	TU VU
	01	REVIVE FROM OBS	10/31/03	TU VU
	02	ADD "GREEN" PXX NOMENCLATURE	11/12/04	TU VU

LAND PATTERN DIMENSIONS

SYMBOL	JEDEC VARIATION			N D T E
	NOT YET REGISTERED	NOM	MAX	
A	-	-	3.40	
A1	.25	-	-	
A2	2.50	2.70	2.90	
D	23.20 BSC			4
D1	20.00 BSC			5.2
E	17.20 BSC			4
E1	14.00 BSC			5.2
N	128			
ND	38			
NE	26			
e	.50 BSC			
b	.17	-	.27	7
b1	.17	.20	.23	
ccc	-	-	.08	

NOTES:

- ALL DIMENSIONING AND TOLERANCING CONFORM TO ANSI Y14.5M-1982
- TOP PACKAGE MAY BE SMALLER THAN BOTTOM PACKAGE BY .15 mm
- DATUMS **A-B** AND **D-D** TO BE DETERMINED AT DATUM PLANE **-H-**
- DIMENSIONS D AND E ARE TO BE DETERMINED AT SEATING PLANE **-C-**
- DIMENSIONS D1 AND E1 DO NOT INCLUDE MOLD PROTRUSION. ALLOWABLE MOLD PROTRUSION IS .25 mm PER SIDE. D1 AND E1 ARE BODY SIZE DIMENSIONS INCLUDING MOLD MISMATCH
- DETAIL OF PIN 1 IDENTIFIER IS OPTIONAL BUT MUST BE LOCATED WITHIN THE ZONE INDICATED
- DIMENSION b DOES NOT INCLUDE DAMBAR PROTRUSION. ALLOWABLE DAMBAR PROTRUSION IS .08 mm IN EXCESS OF THE b DIMENSION AT MAXIMUM MATERIAL CONDITION. DAMBAR CANNOT BE LOCATED ON THE LOWER RADIUS OR THE FOOT.
- EXACT SHAPE OF EACH CORNER IS OPTIONAL
- THESE DIMENSIONS APPLY TO THE FLAT SECTION OF THE LEAD BETWEEN .10 AND .25 mm FROM THE LEAD TIP
- ALL DIMENSIONS ARE IN MILLIMETERS



	MIN	MAX
P	23.80	24.00
P1	20.40	20.60
P2	18.50 BSC	
Q	17.80	18.00
Q1	14.40	14.60
Q2	12.50 BSC	
X	.30	.40
e	.50 BSC	
N		128

TOLERANCES UNLESS SPECIFIED		2975 Slender Way	
DECIMAL	ANGULAR	Santa Clara, CA 95054	
XXX	F	PHONE: (408) 727-6116	
XXXX		FAX: (408) 492-8674	
XXXX		WWW.IDI.COM	
APPROVALS	DATE	TITLE	
DRWN 377	04/15/96	PXX/PYG PACKAGE OUTLINE (RECT)	
CHECKED		14.0 X 20.0 X 2.7 mm POFP	
		1.60/.25 MIN FORM	
SIZE	DRAWING NO.	REV	
C	PSC-4057	02	
DO NOT SCALE DRAWING		SHEET 2 OF 2	