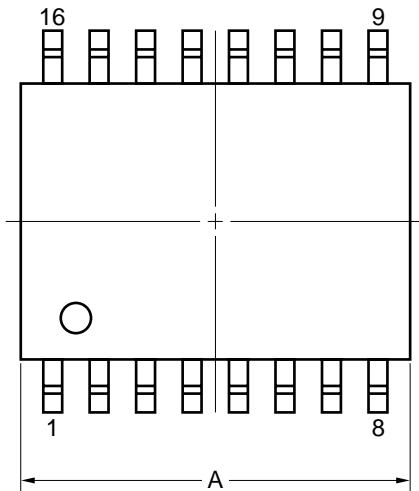
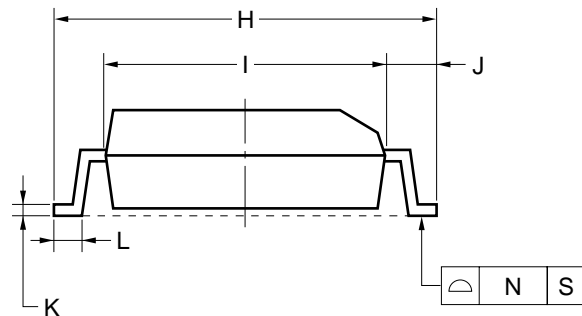
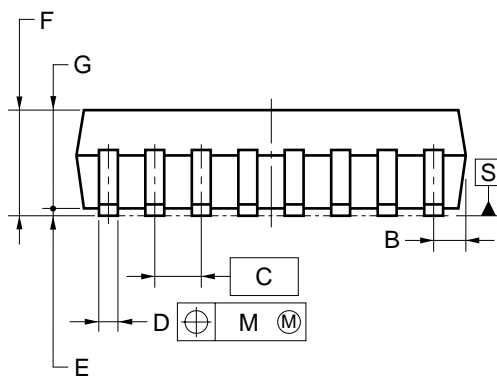
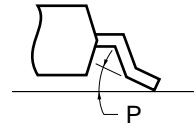


16-PIN PLASTIC SOP (9.53 mm (375))



detail of lead end



NOTE

Each lead centerline is located within 0.12 mm of its true position (T.P.) at maximum material condition.

| ITEM | MILLIMETERS |
|------|----------------------------------------|
| A | 10.0±0.2 |
| B | 0.78 MAX. |
| C | 1.27 (T.P.) |
| D | 0.42 ^{+0.08} _{-0.07} |
| E | 0.125±0.075 |
| F | 2.77 MAX. |
| G | 2.47±0.1 |
| H | 10.3±0.3 |
| I | 7.2 |
| J | 1.6 |
| K | 0.17 ^{+0.08} _{-0.07} |
| L | 0.8±0.2 |
| M | 0.12 |
| N | 0.15 |
| P | 3° ^{+7°} _{-3°} |

P16GM-50-375B-6