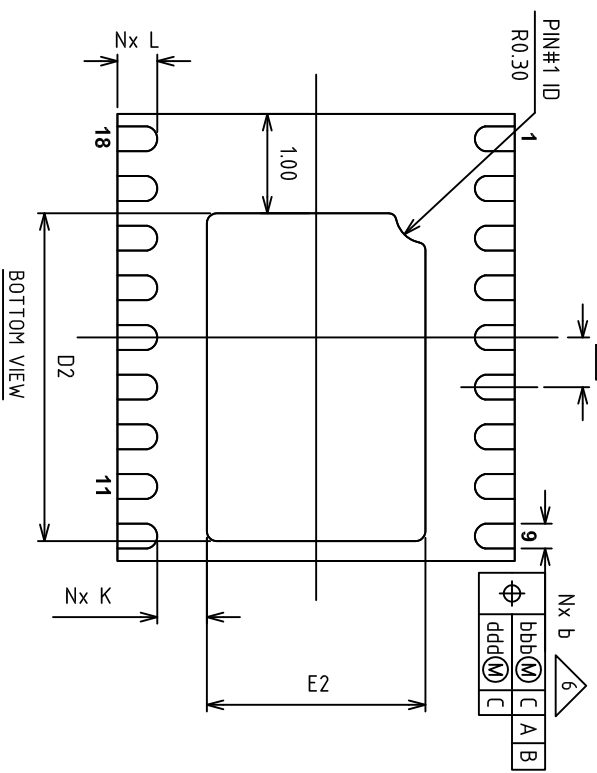
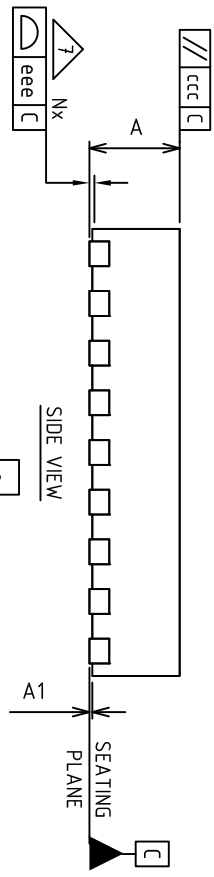
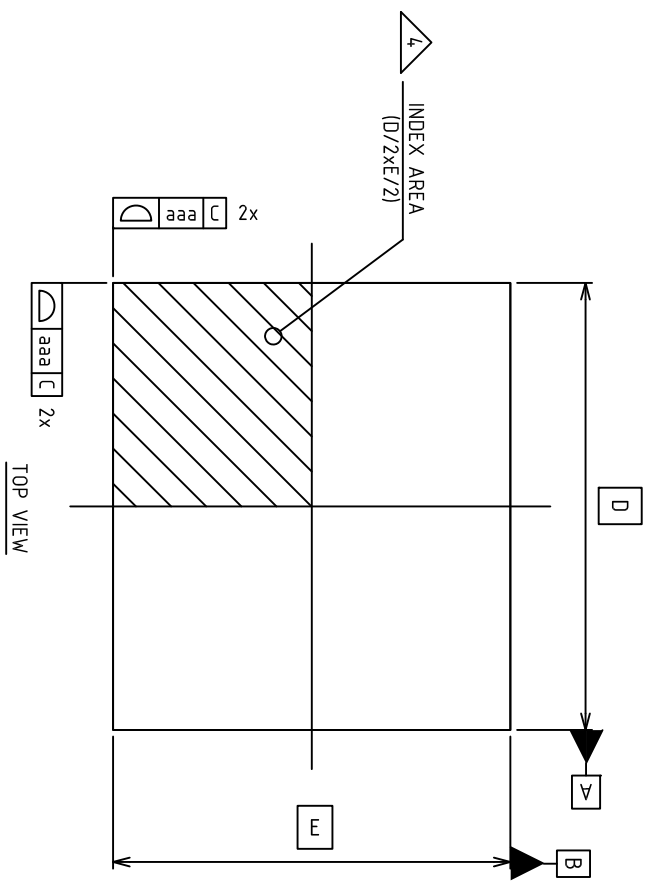


REVISIONS			
REV	DESCRIPTION	DATE	APPROVED
00	INITIAL RELEASE	2/1/13	E.YOON
01	COMBINE POD & LAND PATTERN	8/7/13	KS
02	ADD NOTES RECOMMENDED LAND PATTERN	2/19/14	JH



TOLERANCES UNLESS SPECIFIED  
 DECIMAL ±  
 ANGULAR ±

6024 Silver Creek Valley Road  
 San Jose, CA 95138  
 PHONE: (408) 284-8200  
 FAX: (408) 284-8591

**IDT** M  
 www.idt.com

TITLE: NXG18 PACKAGE OUTLINE  
 4.0 x 4.5mm BODY  
 0.50 mm PITCH QFN

APPROVALS: DATE: DRAWN: 02/02/13 CHECKED:

SIZE: C DRAWING No. PSC-4457 REV 02  
 DO NOT SCALE DRAWING SHEET 1 OF 3

REVISIONS			
REV	DESCRIPTION	DATE	APPROVED
00	INITIAL RELEASE	2/1/13	E:YOUN
01	COMBINE POD & LAND PATTERN	8/7/13	KS
02	ADD NOTE RECOMMENDED LAND PATTERN	2/19/14	J.H

### Dimension Table

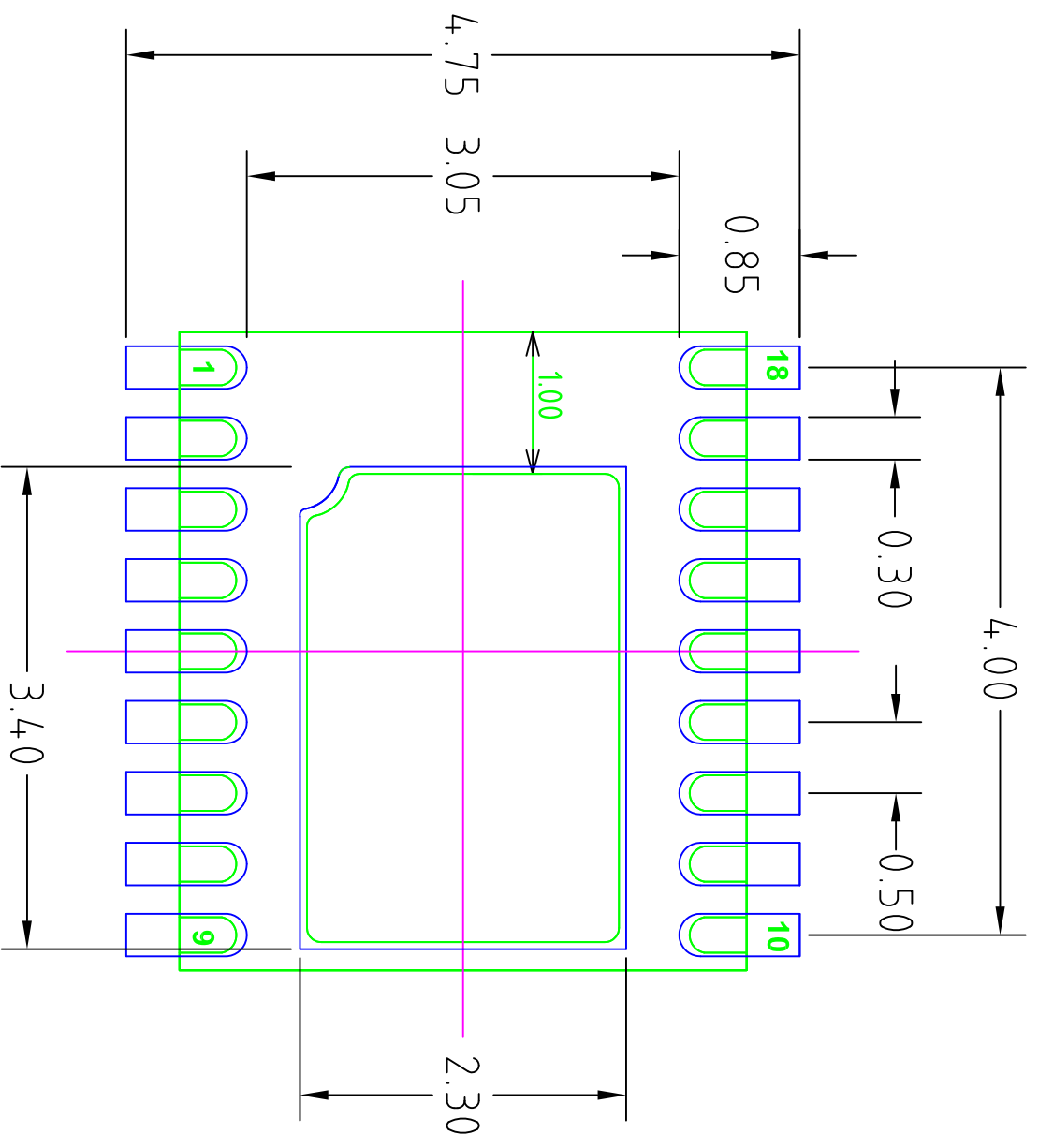
Thickness Symbol	1.50			NOTE
	MINIMUM	NOMINAL	MAXIMUM	
A	1.40	1.50	1.60	
A1	0.00	0.02	0.05	
b	0.20	0.25	0.30	6
D	4.50 BSC			
E	4.00 BSC			
e	0.50 BSC			
D2	3.15	3.30	3.40	
E2	2.05	2.20	2.30	
K	0.20	---	---	
L	0.30	0.40	0.50	
aaa	0.05			
bbb	0.10			
ccc	0.10			
ddd	0.05			
eee	0.08			
N	18			3
ND	9			5
NOTES	1, 2			

NOTE:

- Dimensioning and tolerancing conform to ASME Y14.5-2009.
- All dimensions are in millimeters.
- N is the total number of terminals.
- The location of the marked terminal #1 identifier is within the hatched area.
- ND refers to the maximum number of terminals on D side.
- Dimension b applies to metallized terminal. If the terminal has a radius on its end, dimension b should not be measured in that radius area.
- Coplanarity applies to the terminals and all other bottom surface metallization.

TOLERANCES UNLESS SPECIFIED		6024 Silver Creek Valley Road San Jose, CA 95138	
DECIMAL	ANGULAR	www.IDT.com Phone: (408) 294-8200	
±	±	Fax: (408) 294-8591	
APPROVALS	DATE	TITLE NXB18 PACKAGE OUTLINE	
DRAWN	02/02/13	4.0 x 4.5mm BODY	
CHECKED		0.50 mm PITCH 0FN	
SIZE	DRAWING No.	REV	
C	PSC-4457	02	
DO NOT SCALE DRAWING		SHEET 2 OF 3	

REVISIONS			
REV	DESCRIPTION	DATE	APPROVED
00	INITIAL RELEASE	2/1/13	E.YOON
01	COMBINE POD & LAND PATTERN	8/7/13	KS
02	ADD NOTE RECOMMENDED LAND PATTERN	2/19/14	JH



RECOMMENDED LAND PATTERN

NOTES:

1. ALL DIMENSION ARE IN MM. ANGLES IN DEGREES.
2. TOP DOWN VIEW, AS VIEWED ON PCB.
3. COMPONENT OUTLINE SHOW FOR REFERENCE IN GREEN.
4. LAND PATTERN IN BLUE. NSMD PATTERN ASSUMED.
5. LAND PATTERN RECOMMENDATION PER IPC-7351B GENERIC REQUIREMENT FOR SURFACE MOUNT DESIGN AND LAND PATTERN.

TOLERANCES UNLESS SPECIFIED		6024 Silver Creek Valley Road San Jose, CA 95138	
DECIMAL	ANGULAR	www.IDT.com Phone: (408) 284-8200	
±	±	Fax: (408) 284-8591	
APPROVALS	DATE	TITLE: NXG18 PACKAGE OUTLINE	
XXXX±	02/02/13	4.0 x 4.5mm BODY	
XXXX±		0.50 mm PITCH OPEN	
DRAWN	CHECKED	SIZE	DRAWING No.
		C	PSC-4457
			REV 02
DO NOT SCALE DRAWING		SHEET 3 OF 3	