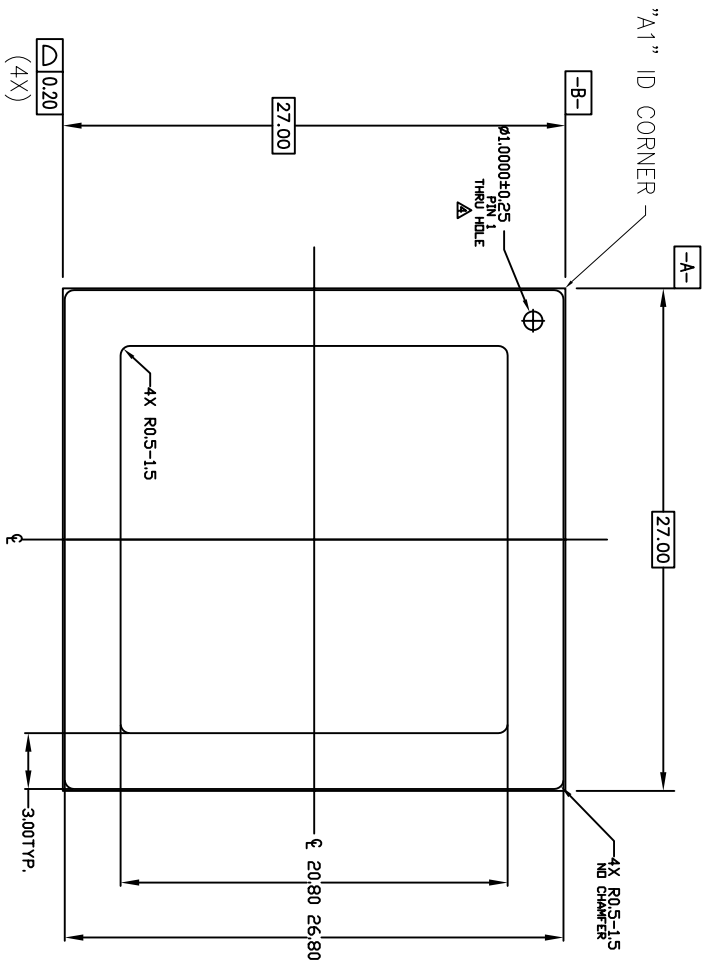
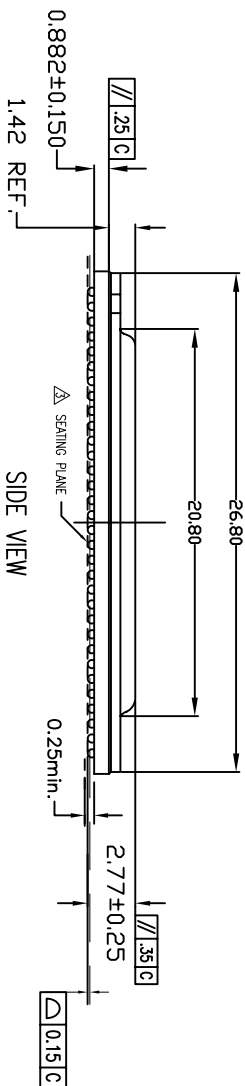


NOTES:

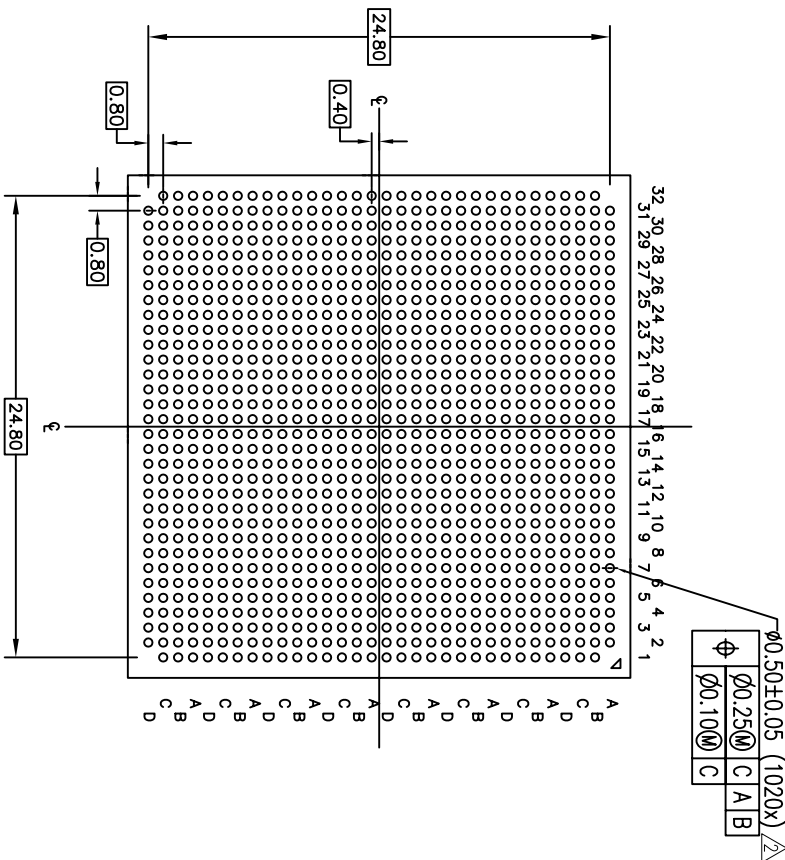
- 1 ALL DIMENSIONING AND TOLERANCING CONFORM TO ANSI Y14.5M-1994
- 2 DIMENSION IS MEASURED AT THE MAXIMUM SOLDER BALL DIAMETER, PARALLEL TO PRIMARY DATUM -C-
- 3 SEATING PLANE AND PRIMARY DATUM -C- ARE DEFINED BY THE CONTACT POINTS OF THREE OR MORE SOLDER BALLS THAT SUPPORT THE DEVICE WHEN PLACED ON TOP OF A PLANAR SURFACE.
- 4 ALL DIMENSIONS ARE IN MILLIMETERS



TOP VIEW



SIDE VIEW

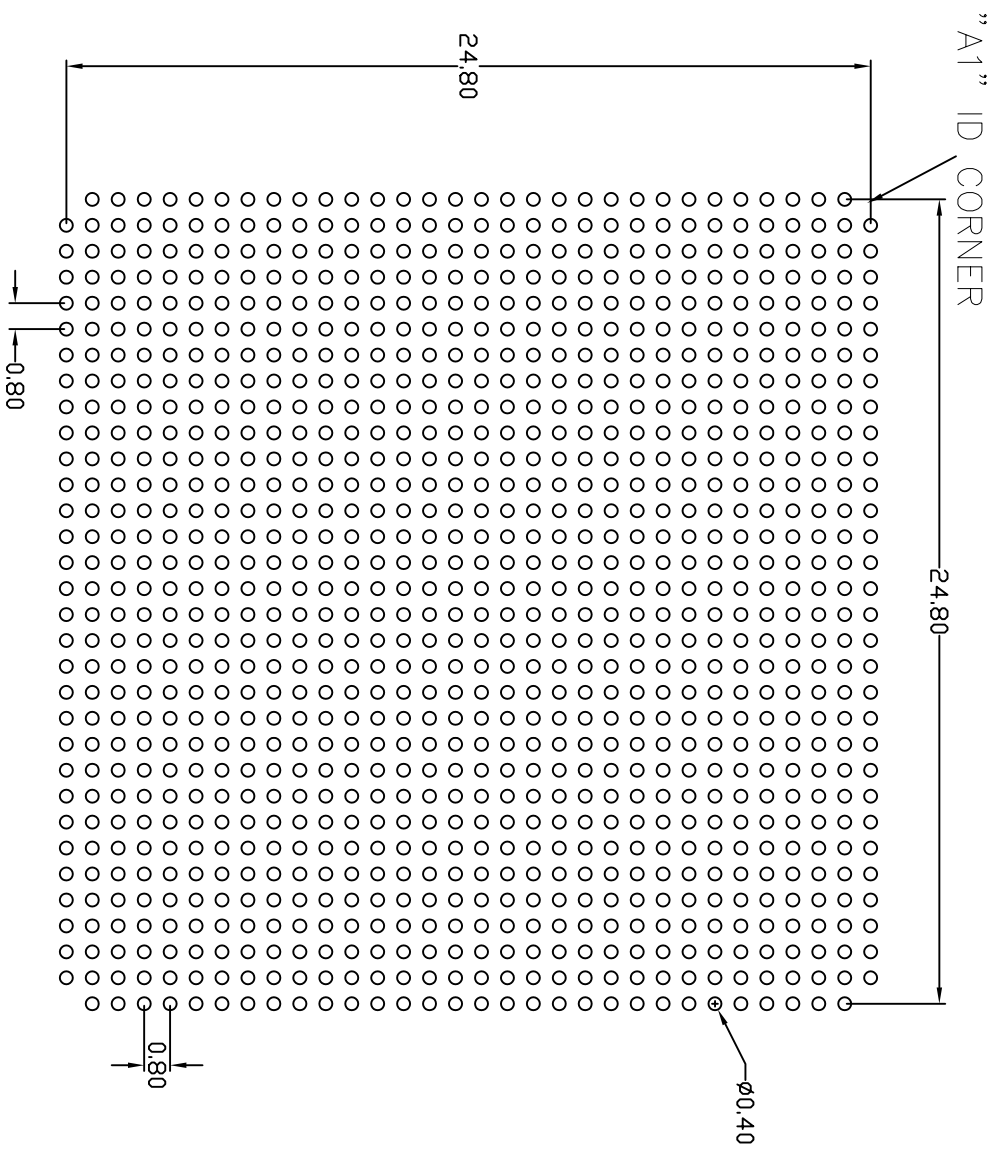


BOTTOM VIEW

REVISIONS			
REV	DESCRIPTION	DATE	APPROVED
00	INITIAL RELEASE	08/25/11	CK
01	CORRECT # OF BALL TO 1020x BESIDE	04/25/12	CK
02	CORRECT SOLDER BALL DIAMETER TO 0.5MM	06/25/12	CK
03	CHANGE PACKAGE THICKNESS	11/20/12	CK
04	COMBINE POD & LAND PATTERN	5/28/13	KS


TOLERANCES UNLESS SPECIFIED			
DECIMAL	±	6024 Silver Creek Valley Rd San Jose, CA 95138 PHONE: (408) 284-8200 FAX: (408) 284-3572 WWW.IDT.COM	
ANGULAR	±	TITLE HLG1020 PACKAGE OUTLINE FCBGA 27.0 x 27.0mm, 0.8mm pitch -HAT LID-	
APPROVALS	DATE	SIZE	DRAWING No.
DRAWN GJC	06/01/11	C	PSC-4387
CHECKED			
			REV 04
DO NOT SCALE DRAWING		SHEET 1 OF 2	

REVISIONS			
REV	DESCRIPTION	DATE	APPROVED
00	INITIAL RELEASE	08/28/12	OK
01	CORRECT # OF BALL TO 1020 RESIST	04/29/12	OK
02	CORRECT SOLDER BALL DIAMETER TO 0.3MM	06/29/12	OK
03	CHANGE PACKAGE THICKNESS	1/29/12	OK
04	CHANGE PCD & LAND PATTERN	5/29/13	MS



RECOMMENDED LAND PATTERN DIMENSION

TOLERANCES UNLESS SPECIFIED		DATE	
DECIMAL	±	08/07/12	
ANGULAR	±		
XXX±	0.05		
XXXX±			
XXXX±			
APPROVALS		DATE	
DRAWN	CJC	08/07/12	
CHECKED			
TITLE HLG1020 PACKAGE OUTLINE		SIZE C	
FCBGA 27.0 x 27.0mm, 0.8mm pitch		DRAWING No. PSC-4387	
-HAT LID-		REV 04	
DO NOT SCALE DRAWING		SHEET 2 OF 2	



6024 Silver Creek Valley Rd  
San Jose, CA 95138  
PHONE: (408) 284-8200  
FAX: (408) 284-3572  
www.IDT.com