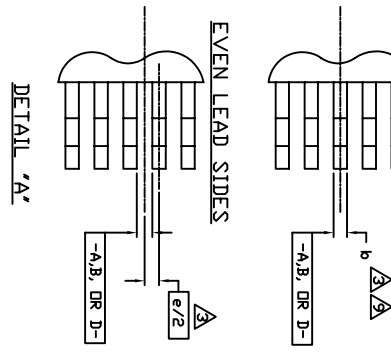
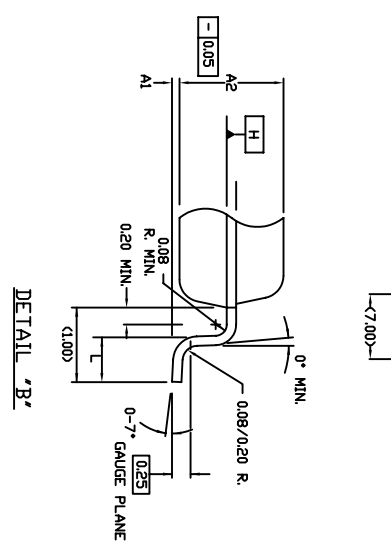
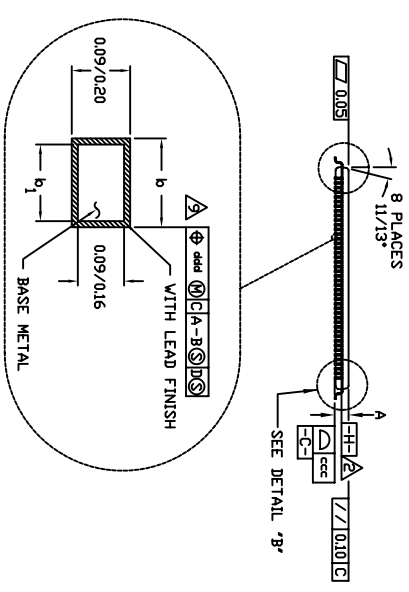


- TAB 1 EXPOSED PART OF CONNECTION AND  
 - CRITICAL DIMENSION IS DEPENDENT ON 'U' (SEE 'U')  
 - EXPOSED PART SIZE IS AFFECTED BY WELD FLASH AND  
 - WELD FLASH IS CONTROLLED BY 'V' (SEE 'V')  
 - VISUAL INSPECTION SPEC



TOLERANCES UNLESS SPECIFIED		6024 SILVER CREEK	
DECIMAL	ANGULAR	VALLEY ROAD, SAN JOSE, CA 95138	
XXX±	±	PHONE: (408) 284-8200	
XXXX±		FAX: (408) 284-3572	
APPROVALS	DATE	WWW.IDT.COM	
DRAWN GJC	01/22/10	IDT™	
CHECKED		E0/E0G176 E-PAQ 10PP (24X24X1.4MM)	
		MATRIX PACKAGE OUTLINE	
SIZE	DRAWING No.	PSC-4298	
C		REV 01	
DO NOT SCALE DRAWING		SHEET 1 OF 4	

**NOTES:**

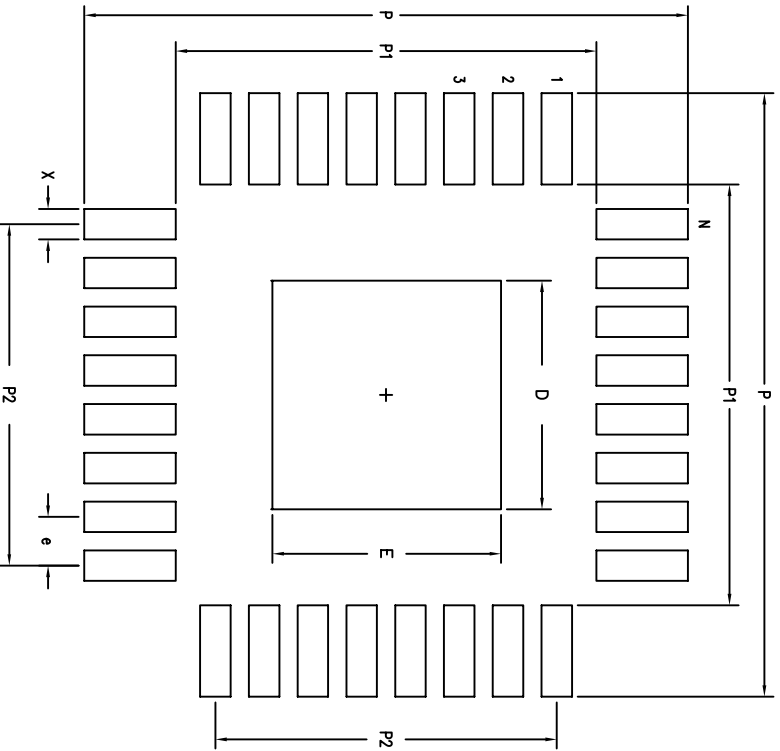
1. ALL DIMENSIONING AND TOLERANCING CONFORM TO ANSI Y14.5M-1994.
2. DATUM PLANE  $\square\text{--H}\square$  LOCATED AT MOLD PARTING LINE AND COINCIDENT WITH LEAD, WHERE LEAD EXITS PLASTIC BODY AT BOTTOM OF PARTING LINE.
3. DATUMS  $\square\text{--B}\square$  AND  $\square\text{--D}\square$  TO BE DETERMINED AT CENTERLINE BETWEEN LEADS WHERE LEADS EXIT PLASTIC BODY AT DATUM PLANE  $\square\text{--H}\square$ .
4. TO BE DETERMINED AT SEATING PLANE  $\square\text{--C}\square$ .
5. DIMENSIONS D1 AND E1 DO NOT INCLUDE MOLD PROTRUSION, ALLOWABLE MOLD PROTRUSION IS 0.254 MM ON D1 AND E1 DIMENSIONS.
6. \*N\* IS THE TOTAL NUMBER OF TERMINALS.
7. THESE DIMENSIONS TO BE DETERMINED AT DATUM PLANE  $\square\text{--H}\square$ .
8. PACKAGE TOP DIMENSIONS ARE SMALLER THAN BOTTOM DIMENSIONS AND TOP OF PACKAGE WILL NOT OVERHANG BOTTOM OF PACKAGE.

9. DIMENSION b DOES NOT INCLUDE DAMBAR PROTRUSION, ALLOWABLE DAMBAR PROTRUSION SHALL BE 0.08mm TOTAL IN EXCESS OF THE b DIMENSION AT MAXIMUM MATERIAL CONDITION. DAMBAR CANNOT BE LOCATED ON THE LOWER RADIUS OR THE FOOT.
10. CONTROLLING DIMENSION: MILLIMETER.
11. MAXIMUM ALLOWABLE DIE THICKNESS TO BE ASSEMBLED IN THIS PACKAGE FAMILY IS 0.38 MILLIMETERS.
12. THIS OUTLINE CONFORMS TO JEDEC PUBLICATION 95 REGISTRATION MS-026, VARIATION BGA A1 IS DEFINED AS THE DISTANCE FROM THE SEATING PLANE TO THE LOWEST POINT OF THE PACKAGE BODY.
14. EXPOSED PAD SHALL BE COPLANAR WITH BOTTOM OF PACKAGE WITHIN 0.05.

S Y M B O L	JEDEC VARIATION ALL DIMENSIONS IN MILLIMETERS			N O T E
	MIN.	NOM.	MAX.	
A	$\sphericalangle$	$\sphericalangle$	1.60	13
A1	0.05	$\sphericalangle$	0.15	
A2	1.35	1.40	1.45	
D	26.00 BSC.			4
D1	24.00 BSC.			7,8
E	26.00 BSC.			4
E1	24.00 BSC.			7,8
L	0.45	0.60	0.75	
N	176			
e	0.50 BSC.			
b	0.17	0.22	0.27	9
b1	0.17	0.20	0.23	
ccc	$\sphericalangle$	$\sphericalangle$	0.08	
ddd	$\sphericalangle$	$\sphericalangle$	0.08	

TOLERANCES UNLESS SPECIFIED		6024 SILVER CREEK	
DECIMAL	ANGULAR	VALLEY ROAD, SAN JOSE,	
XXX#	F	CA 95138	
XXXX#		PHONE: (408) 284-8200	
XXXX#		FAX: (408) 284-5972	
APPROVALS	DATE	TITLE	
DRAWN GJC	01/22/10	EQ/EOG176 E-PAD LQP (24X24X1.4MM)	
CHECKED		MATRIX PACKAGE OUTLINE	
		SIZE	DRAWING No.
		C	PSC-4298
			REV
			01
DO NOT SCALE DRAWING		SHEET 2 OF 4	


### EXPOSED LAND PATTERN DIMENSIONS



	UNIT (MM)
P	26.90
P1	23.90
P2	21.5
X	.30
e	.50
D	7.50
N	176

Refer to PSC-4298 for Package Outline Dimensions.


TOLERANCES UNLESS SPECIFIED		DECIMAL ANGULAR	
XXX±	±	°	±
XXXX±			
APPROVALS	DATE	TITLE EO/EOG176 E-PAD IQFP	
DRAWN 7/10	04/22/10	(24 x 24 x 1.4 mm)	
CHECKED		MATRIX PACKAGE OUTLINE	
SIZE C	DRAWING No. PSC-4298	REV 01	
DO NOT SCALE DRAWING		SHEET 3	OF 4



6024 Silver Creek Valley Rd  
San Jose, CA 95138  
PHONE: (408) 264-8200  
FAX: (408) 264-3572

**REVISIONS HISTORY**

<b>REV</b>	<b>DESCRIPTION</b>	<b>DATE</b>	<b>APPROVED</b>
00	INITIAL RELEASE	01/22/10	CK LEE
01	COMBINE POD and LAND PATTERN	07/98/13	K. STAHN

<b>TOLERANCES</b> UNLESS SPECIFIED DECIMAL XXX± ANGULAR XXXX±	<b>ANGULAR</b>
<b>TITLE</b> EQ/EOG176 E-PAD LOFP (24X24X1.4MM) MATRIX PACKAGE OUTLINE	 <b>IDT™</b> www.IDT.com
<b>APPROVALS</b>	<b>DATE</b>
DRAWN GJK	01/22/10
CHECKED	
<b>SIZE</b> C	<b>DRAWING No.</b> PSC-4298
DO NOT SCALE DRAWING	
<b>REV</b> 01	<b>SHEET</b> 4 OF 4
6024 SILVER CREEK VALLEY ROAD, SAN JOSE, CA 95138 PHONE: (408) 284-8200 FAX: (408) 284-3572	