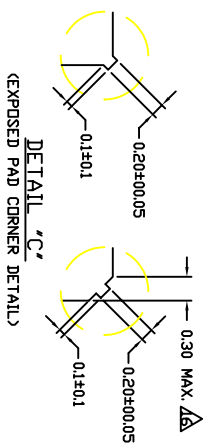
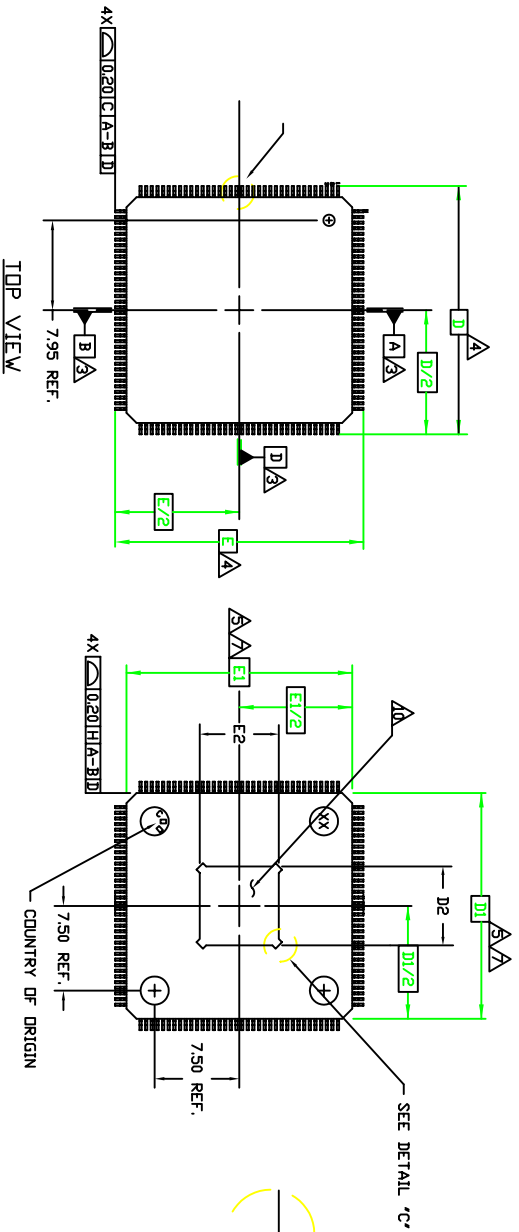
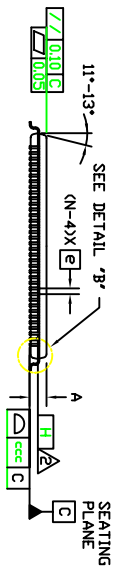


REVISIONS			
REV	DESCRIPTION	DATE	APPROVED
00	INITIAL RELEASE	11/3/10	R TORCUATO
01	COMBINE POD & LAND PATTERN	7/1/13	KS

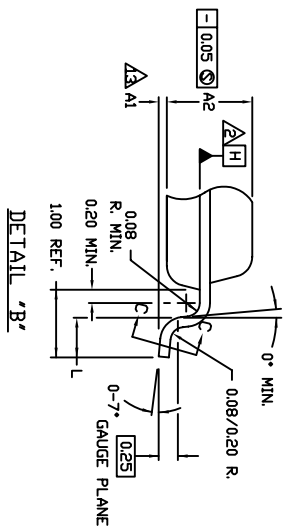


BOTTOM VIEW

ODD LEAD SIDES

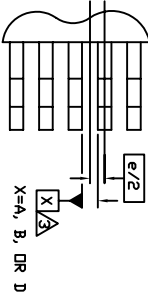


SECTION C-C



DETAIL 'A'

EVEN LEAD SIDES



TOLERANCES UNLESS SPECIFIED		TITLE	
DECIMAL	ANGULAR	EG/EG6144 PACKAGE OUTLINE	
X±.1	E°	20 x 20 mm BODY	
XXX±.05		E PAD 7.0 mm SQ	
XXXX.030		0.30 mm PITCH, 1.0 mm THICK	
APPROVALS	DATE	DRAWING No.	REV
DRAWN <i>dal</i>	11/3/10	PSC-4175	01
CHECKED			
		DO NOT SCALE DRAWING	SHEET 1 OF 3

6024 SILVER CREEK
VALETT ROAD, SAN JOSE,
CA 95138
PHONE: (408) 284-8200
FAX: (408) 284-3572


www.idt.com

REVISIONS			
REV	DESCRIPTION	DATE	APPROVED
00	INITIAL RELEASE	11/3/10	R.TORCUATO
01	COMBINE PAD & LAND PATTERN	7/1/13	KS

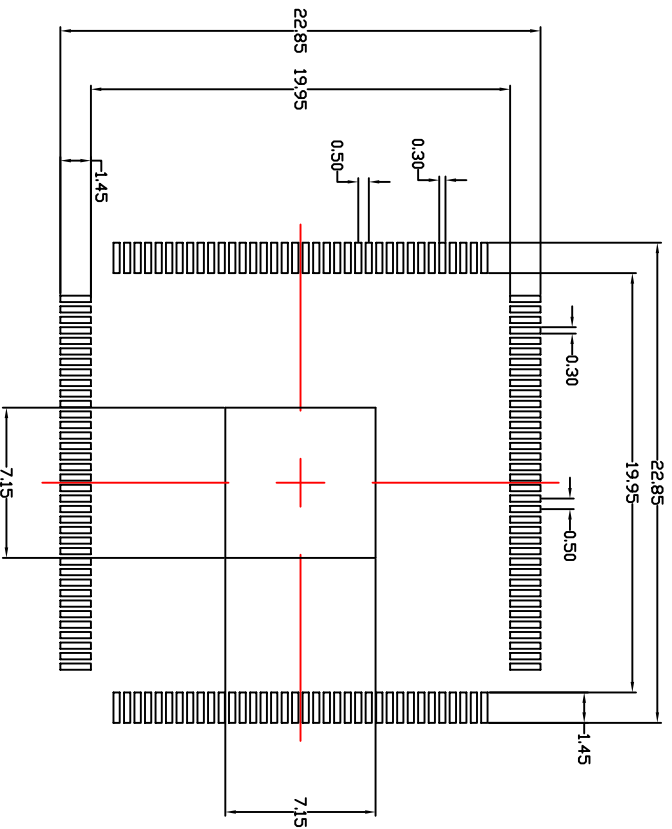
- NOTES:
- ALL DIMENSIONING AND TOLERANCES CONFORM TO ASME Y14.5-1994.
 - DATUM PLANE \square LOCATED AT MOLD PARTING LINE AND COINCIDENT WITH LEAD WHERE LEAD EXITS PLASTIC BODY AT BOTTOM OF PARTING LINE.
 - DATUMS \square , \square AND \square TO BE DETERMINED AT CENTERLINE BETWEEN LEADS WHERE LEADS EXIT PLASTIC BODY AT DATUM PLANE \square .
 - LEADS WHERE LEADS EXIT SEATING PLANE \square TO BE DETERMINED AT SEATING PLANE \square .
 - DIMENSIONS D1 AND E1 DO NOT INCLUDE MOLD PROTRUSION.
 - ALLOWABLE MOLD PROTRUSION IS 0.254 MM PER SIDE.
 - DIMENSION D1 AND E1 INCLUDE MOLD MISMATCH AND ARE DETERMINED AT DATUM PLANE \square .
 - NUMBER OF TERMINALS.
 - PACKAGE TOP DIMENSIONS ARE SMALLER THAN BOTTOM DIMENSIONS BY 0.10 MILLIMETERS, AND TOP OF PACKAGE WILL NOT OVERHANG BOTTOM OF PACKAGE.
 - DIMENSIONS \square DOES NOT INCLUDE DAMBAR PROTRUSION. ALLOWABLE DAMBAR PROTRUSION SHALL BE MORE THAN 0.08 MM, DIMENSIONS \square TO EXCEED THE MAXIMUM \square DIMENSION BY MORE THAN 0.08 MM, DAMBAR CAN NOT BE LOCATED ON THE LOWER RADIIUS OR THE FOOT.

- ALL DIMENSIONS ARE IN MILLIMETERS.
- THE EXPOSED PAD IS COINCIDENT WITH THE TOP OR BOTTOM SIDE OF THE PACKAGE AND NOT ALLOWED TO PROTRUDE BEYOND THAT SURFACE.
- THESE DIMENSIONS APPLY TO THE FLAT SECTION OF THE LEAD BETWEEN 0.10 MM AND 0.25 MM FROM THE LEAD TIP.
- THIS DRAWING CONFORMS TO JEDEC REGISTERED OUTLINE MS-026-C.
- VARIATION BFB AND BFC.
- BUT THE EXPOSED PAD DIMENSION WAS NOT SPECIFIED ON JEDEC.
- A1 IS DEFINED AS THE DISTANCE FROM THE SEATING PLANE TO THE LOWEST POINT OF THE PACKAGE BODY.
- DIMENSION D2 AND E2 SHOW THE THE EXPOSED PAD.
- EXPOSED PAD SHALL BE COPLANAR WITH BOTTOM OF PACKAGE WITHIN 0.05.
- CORNER CHAMFER OF EXPOSED DIE PAD SHALL BE WITHIN 0.30 MM.

(JEDEC VARIATION)				ALL DIMENSIONS IN MILLIMETERS	
S	B	F	L	N	E
MIN.	NDM.	MAX.			
A		1.20		13	
A1	0.05	0.10	0.15		
A2	0.95	1.00	1.05		
D		22.00 BSC.		4	
D1		20.00 BSC.		7.8	
D2	6.85	7.00	7.15	10, 14	
E		22.00 BSC.		4	
E1		20.00 BSC.		7.8	
E2	6.85	7.00	7.15	10, 14	
L	0.45	0.60	0.75		
N		144			
e		0.50 BSC.			
b	0.17	0.22	0.27	9	
bl	0.17	0.20	0.23		
ccc			0.08		
ddd			0.08		

TOLERANCES UNLESS SPECIFIED		6024 SILVER CREEK VALLEY ROAD, SAN JOSE, CA 95138	
DECIMAL	ANGULAR	PHONE: (408) 284-8200	
XX±.05	E±	FAX: (408) 284-3572	
XXX±.05		 IDT	
XXXX±.030			
APPROVALS	DATE	TITLE	SIZE
DRAWN $\&A$ G	11/3/10	EG/EGG144 PACKAGE OUTLINE	C
CHECKED		20 x 20 mm BODY	
		EPAD 7.0 mm SQ	
		0.30 mm PITCH, 1.0 MM THICK	
		DRAWING No.	REV
		PSC-4175	01
DO NOT SCALE DRAWING			SHEET 2 OF 3


REVISIONS			
REV	DESCRIPTION	DATE	APPROVED
00	INITIAL RELEASE	11/3/10	R.TORCUATO
01	COMBINE POD & LAND PATTERN	7/1/13	KS



RECOMMENDED FOOT PRINT DIMENSION

- NOTES:**
1. ALL DIMENSION ARE IN mm. ANGLES IN DEGREES.
 2. TOP DOWN VIEW, AS VIEWED ON PCB.
 3. LAND PATTERN IN BLACK, NSMD PATTERN ASSUMED.
 4. LAND PATTERN RECOMMENDATION PER IPC-7351B LP CALCULATOR.

TOLERANCES UNLESS SPECIFIED		ANGULAR	
DECIMAL		±1°	
X±.1			
XXX±.05			
XXXX±.030			
APPROVALS	DATE	TITLE	EG/EGG144 PACKAGE OUTLINE
DRAWN dadg	11/3/10	20 x 20 mm BODY	
CHECKED		EPAD 7.0 mm SQ	
		0.50 mm PITCH, 1.0 MM THICK	
SIZE	DRAWING No.	PSC-4175	REV
C			01
DO NOT SCALE DRAWING		SHEET 3 OF 3	



IDT
www.IDT.com

6024 SILVER CREEK
VALLEY ROAD, SAN JOSE,
CA 95138
PHONE: (408) 284-8200
FAX: (408) 284-3572