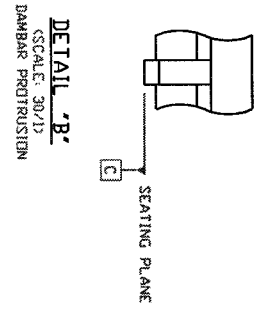
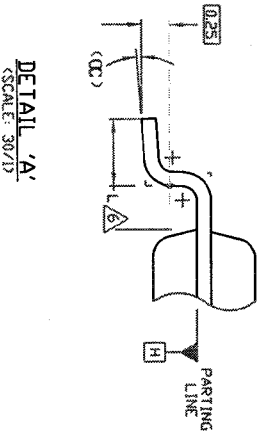
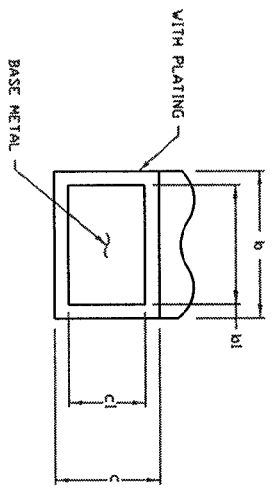
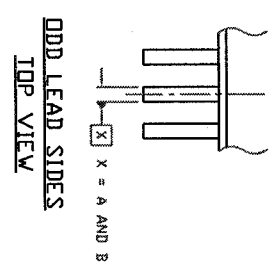
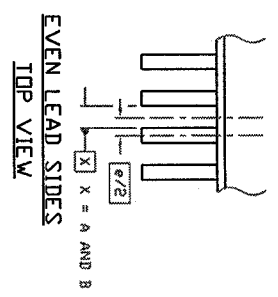
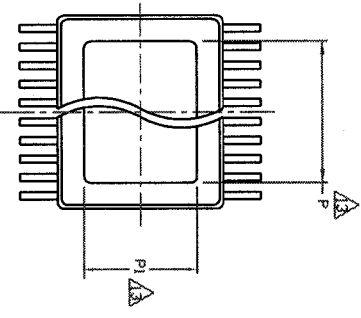
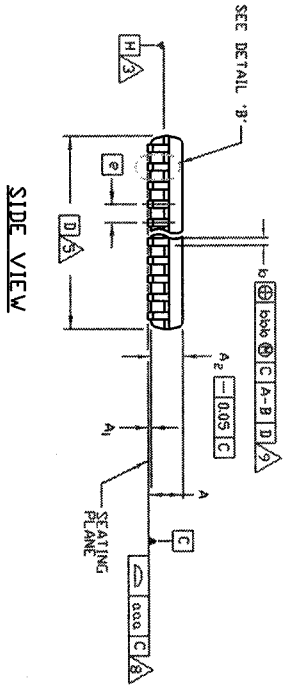
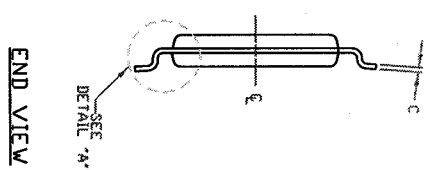
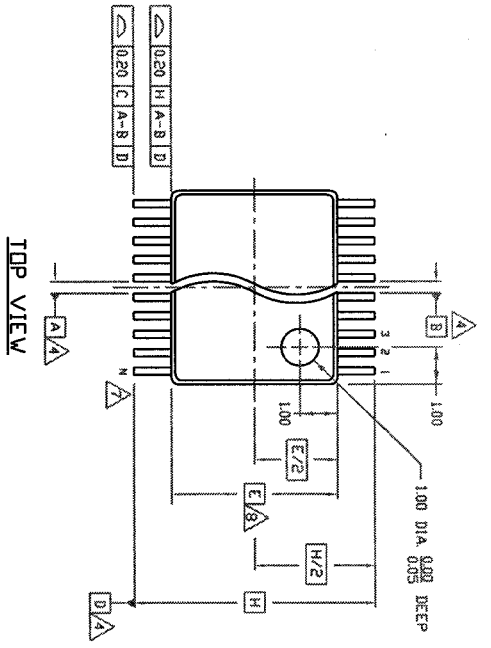


REVISIONS			DATE	APPROVED
DCN	REV	DESCRIPTION		
	00	INITIAL RELEASE	04/23/00	RT
	01	ADDED PAD TO LAND PATTERN	11/30/00	PKP



TOLERANCES UNLESS SPECIFIED			
DECIMAL	ANGULAR		
X2 .1 .05	E 1°		
X1/2 .025			
APPROVALS	DATE	TITLE	
DRAWN PZP/4/22/00		DW48 PACKAGE OUTLINE	
CHECKED		6.10 mm BODY, 0.5 mm PITCH TSSOP	
SIZE	DRAWING NO.	PSC-4092	REV
C			01
DO NOT SCALE DRAWING			SHEET 1 OF 2

**Integrated Device Technology, Inc.**  
 2975 Stoner Way, Santa Clara, CA 95054  
 PHONE: (408) 777-0110 FAX: (408) 492-8674 TWR: 910-338-2070

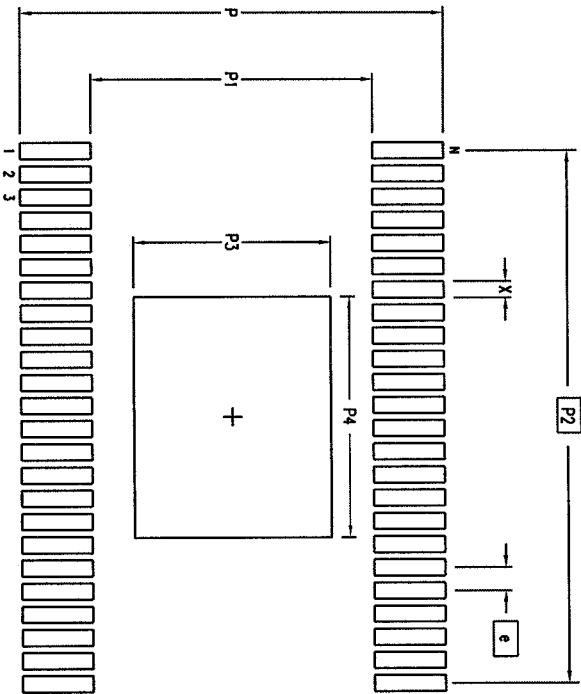
ALL DIMENSIONS IN MILLIMETERS

JEDEC VARIATION ED			
	MIN.	NOM.	MAX.
A	0.05	0.15	1.10
A <sub>1</sub>	0.85	0.90	0.95
A <sub>2</sub>	0.00	0.10	0.27
b	0.17	0.20	0.23
b <sub>1</sub>	0.08	0.20	0.23
b <sub>2</sub>	0.09	0.20	0.28
c	0.09	0.127	0.16
d	12.40	12.50	12.60
e	6.00	6.10	6.20
e	0.50 BSC		
h	8.10 BSC		
l	0.50	0.60	0.75
n	48		
α	0°	—	8°

NOTES:

- DIE THICKNESS ALLOWABLE IS 0.279±0.0127 (0.110±0.005 INCHES)
  - DIMENSIONING & TOLERANCES PER ASME Y14.5M-1994.
- △ DATUM PLANE H LOCATED AT MOLD PARTING LINE AND COINCIDENT WITH LEAD, WHERE LEAD EXITS PLASTIC BODY AT BOTTOM OF PARTING LINE.
  - △ DATUMS A-B AND D TO BE DETERMINED WHERE CENTERLINE BETWEEN LEADS EXITS PLASTIC BODY AT DATUM PLANE H.
  - △ 'D' & 'E' ARE REFERENCE DATUMS AND DO NOT INCLUDE MOLD FLASH OR PROTRUSIONS, AND ARE MEASURED AT THE BOTTOM PARTING LINE MOLD FLASH OR PROTRUSIONS SHALL NOT EXCEED 0.15mm ON D AND 0.25mm ON E PER SIDE.
  - △ DIMENSION IS THE LENGTH OF TERMINAL FOR SOLDERING TO A SUBSTRATE.
  - △ TERMINAL POSITIONS ARE SHOWN FOR REFERENCE ONLY.
  - △ FORMED LEADS SHALL BE PLANAR WITH RESPECT TO ONE ANOTHER WITHIN 0.076mm AT SEATING PLANE.
  - △ THE LEAD WIDTH DIMENSION DOES NOT INCLUDE DAMBAR PROTRUSION. ALLOWABLE DAMBAR PROTRUSION SHALL BE 0.08mm TOTAL IN EXCESS OF THE LEAD WIDTH DIMENSION AT MAXIMUM MATERIAL CONDITION. DAMBAR CANNOT BE LOCATED ON THE LOWER RADIUS OR THE FOOT. MINIMUM SPACE BETWEEN PROTRUSIONS AND AN ADJACENT LEAD TO BE 0.10mm FOR 0.65mm PITCH, 0.08mm FOR 0.50mm PITCH AND 0.07mm FOR 0.40mm PITCH PACKAGES.
  - △ SEE DETAIL 'B' AND SECTION 'C-C'.
  - △ SECTION 'C-C' TO BE DETERMINED AT 0.10 TO 0.25 MM FROM THE LEAD TIP.
- CONTROLLING DIMENSION: MILLIMETERS.
  - THIS PART IS COMPLIANT WITH JEDEC SPECIFICATION MG-153, VARIATION ED.
  - DIMENSIONS 'P' AND 'P1' ARE THERMALLY ENHANCED VARIATIONS. VALUES SHOWN ARE MAXIMUM SIZE OF EXPOSED PAD WITHIN LEAD COUNT AND BODY SIZE. END USER SHOULD VERIFY AVAILABLE SIZE OF EXPOSED PAD FOR SPECIFIC DEVICE APPLICATION.

LAND PATTERN DIMENSIONS



	MIN	MAX
P	8.90	9.10
P1	5.90	6.10
P2	1.50 BSC	
P3	4.25	4.35
P4	5.25	5.35
X	.30	.40
e	.50 BSC	
N	48	

REVISIONS				
DCN	REV	DESCRIPTION	DATE	APPROVED
	00	INITIAL RELEASE	04/23/00	RT
	01	ADDED ePAD TO LAND PATTERN	11/30/00	PKY

TOLERANCES UNLESS SPECIFIED		<p>Integrated Device Technology, Inc. 2975 Steiner Way, Santa Clara, CA 95054 Phone: (408) 727-0110 FAX: (408) 432-8674 TWR: 910-338-2070</p>
DECIMAL	ANGULAR	
X.1	±1°	
X.2 .05	±1°	
X.25 .025	±1°	
APPROVALS	DATE	TITLE
DRAWN / PXP/DP	4/23/00	DW48 PACKAGE OUTLINE
CHECKED		6.10 mm BODY, 0.5 mm PITCH TSSOP
SIZE	DRAWING No.	REV
C	PSC-4092	01
DO NOT SCALE DRAWING		SHEET 2 OF 2