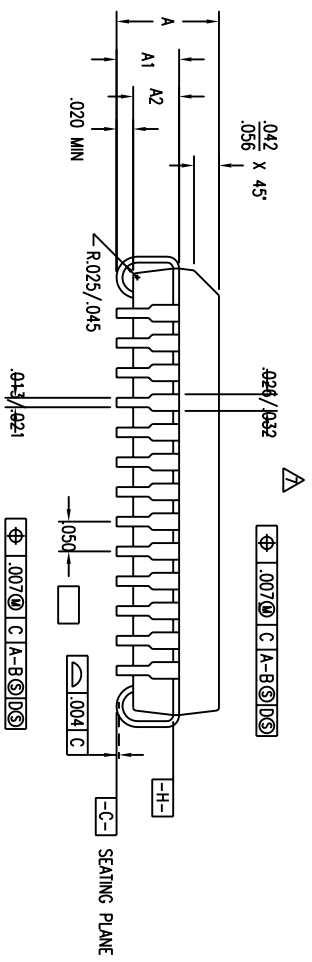
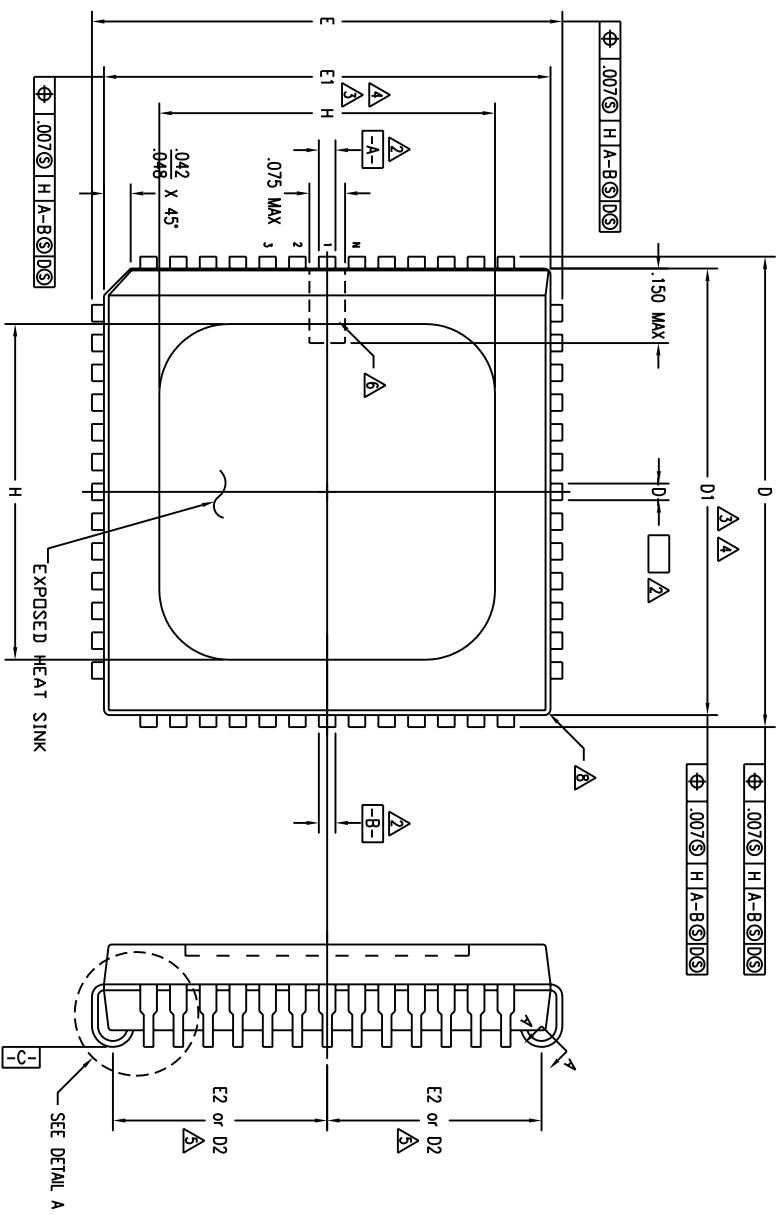
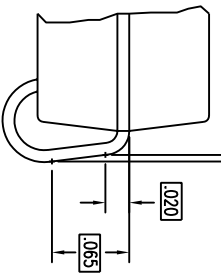



REVISIONS				
DCN	REV	DESCRIPTION	DATE	APPROVED
02	02	ADD "GREEN" DLG NOMENCLATURE	11/11/04	TU VU



DETAIL A



TOLERANCES UNLESS SPECIFIED DECIMAL ± ANGULAR ±		 2975 Slender Way San Jose, CA 95054 PHONE: (408) 727-6116 FAX: (408) 492-8674 www.IDT.com
APPROVALS DRAWN: JJC CHECKED:	DATE: 08/16/01	
TITLE: DL/DLG PACKAGE OUTLINE: POWERQUAD2 PLCC THERMALLY ENHANCED WITH SQUARE EXPOSED HEATSINK: .050 PITCH		SIZE: C DRAWING No.: PSC-4087
DO NOT SCALE DRAWING		

REVISIONS				
DCN	REV	DESCRIPTION	DATE	APPROVED
02	ADD "GREEN" DLG NOMENCLATURE	11/11/04	TU VU	

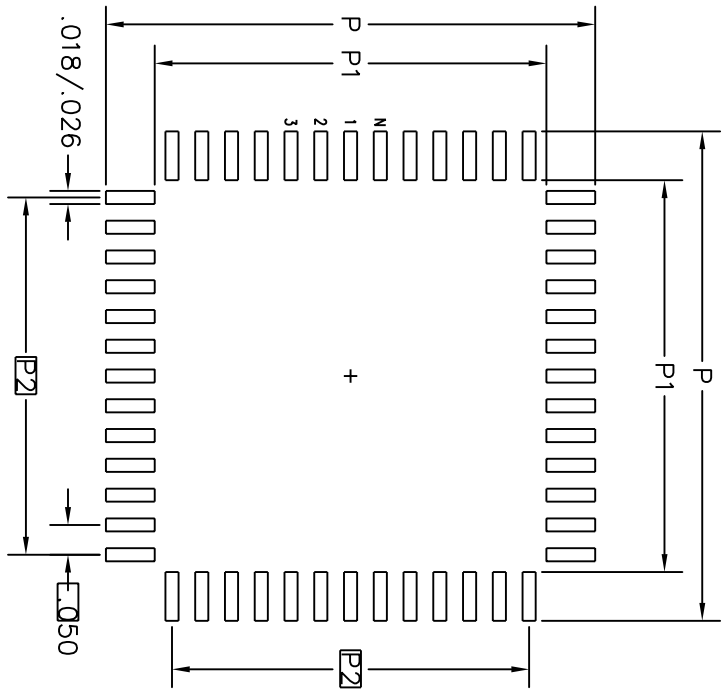
SYMBOL	JEDEC VARIATION			N D T E
	AF			
	MIN	NOM	MAX	
A	.165	.172	.180	
A1	.095	.105	.115	
A2	.059	-	.080	
D	1.185	1.190	1.195	
D1	1.150	1.154	1.156	3,4
D2	.545	.555	.565	5
E	1.185	1.190	1.195	
E1	1.150	1.154	1.156	3,4
E2	.541	.555	.569	5
H	.827 REF.			
N	84			

NOTES:


- 1 ALL DIMENSIONING AND TOLERANCING CONFORM TO ANSI Y14.5M-1982
- ▲ DATUMS [A-B] AND [-D-] TO BE DETERMINED AT DATUM PLANE [-H-]
- ▲ DIMENSIONS D1 AND E1 ARE TO BE DETERMINED AT DATUM PLANE [-H-]
- ▲ DIMENSIONS D1 AND E1 DO NOT INCLUDE MOLD PROTRUSION. ALLOWABLE MOLD PROTRUSION IS .010 PER SIDE. D1 AND E1 ARE BODY SIZE DIMENSIONS INCLUDING MOLD MISMATCH
- ▲ DIMENSIONS D2 AND E2 ARE TO BE DETERMINED AT SEATING PLANE [-C-] CONTACT POINT
- ▲ DETAIL OF PIN 1 IDENTIFIER IS OPTIONAL BUT MUST BE LOCATED WITHIN THE ZONE INDICATED
- ▲ LEAD WIDTH DIMENSION DOES NOT INCLUDE DAMBAR PROTRUSION. ALLOWABLE DAMBAR PROTRUSION IS .007 TOTAL MAXIMUM PER LEAD
- ▲ EXACT SHAPE OF EACH CORNER IS OPTIONAL
- ▲ THESE DIMENSIONS DETERMINE THE MAXIMUM ANGLE OF THE LEAD FOR SOCKET APPLICATIONS
- 10 ALL DIMENSIONS ARE IN INCHES

THIS OUTLINE CONFORMS TO JEDEC PUBLICATION 95 REGISTRATION MS-018. VARIATION AB, AC, AD, AE & AF. EXCEPTIONS: JEDEC MAXIMUM BASE METAL LEAD WIDTH IS .018

LAND PATTERN DIMENSIONS

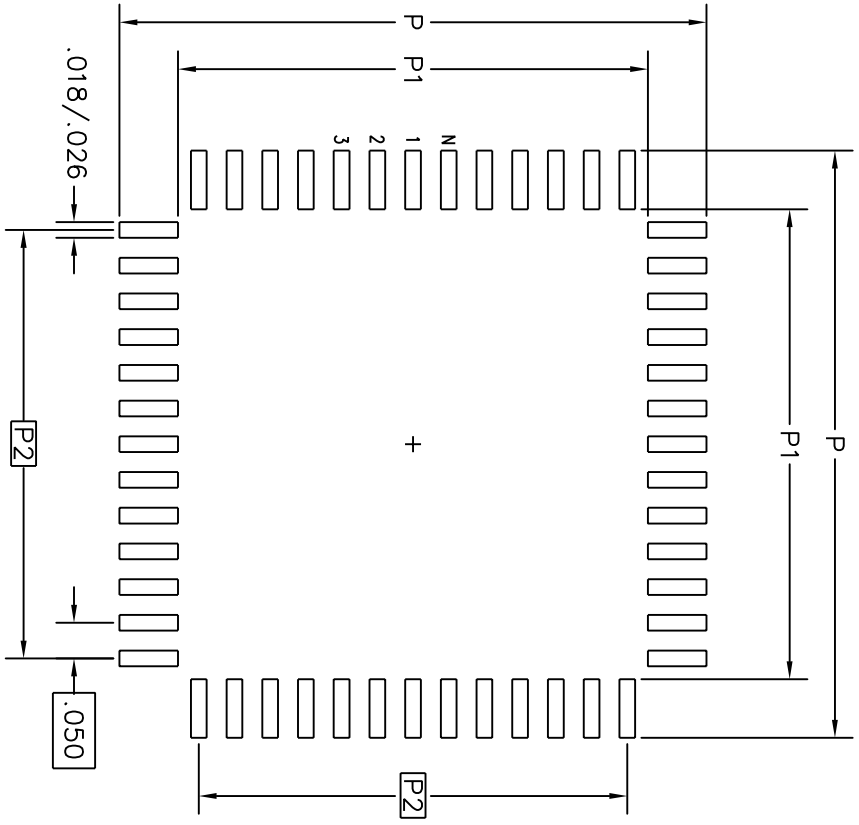


	MIN	MAX
P	1.220	1.228
P1	1.054	1.062
P2	1.000	BSC
N	84	

TOLERANCES UNLESS SPECIFIED		2975 Slender Way	
DECIMAL	ANGULAR	Santa Clara, CA 95054	
xxx±	±	PHONE: (408) 727-6116	
xxxx±		FAX: (408) 492-8674	
www.IDT.com			
APPROVALS	DATE	TITLE	
DRW: JGC	08/16/01	DL/DLG PACKAGE OUTLINE: POWERQUAD2 PLCC	
CHECKED		THERMALLY ENHANCED WITH SQUARE EXPOSED HEATSINK; .050 PITCH	
SIZE	DRAWING No.	REV	
C	PSC-4087	02	
DO NOT SCALE DRAWING		SHEET 2 OF 3	

REVISIONS				
DCN	REV	DESCRIPTION	DATE	APPROVED
	02	ADD "GREEN" DLG NOMENCLATURE	11/11/04	TU VU

LAND PATTERN DIMENSIONS



	MIN	MAX
P	1.220	1.228
P1	1.054	1.062
P2	1.000 BSC	
N	84	

TOLERANCES UNLESS SPECIFIED	
DECIMAL	ANGULAR
XXX±	±
XXXX±	
XXXX±	
APPROVALS	DATE
DRAWN <i>DLG</i>	08/16/01
CHECKED	
IDT™ 2975 Stender Way Santa Clara, CA 95054 PHONE: (408) 727-6116 FAX: (408) 492-8674 www.idt.com	
TITLE	
DL/DLG PACKAGE OUTLINE: POWERQUAD2 PLCC THERMALLY ENHANCED WITH SQUARE EXPOSED HEATSINK; .050 PITCH	
SIZE	DRAWING No.
C	PSC-4087
	REV
	02
DO NOT SCALE DRAWING	
	SHEET 3 OF 3