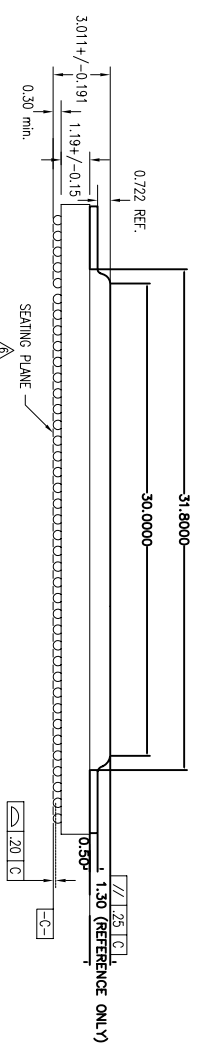
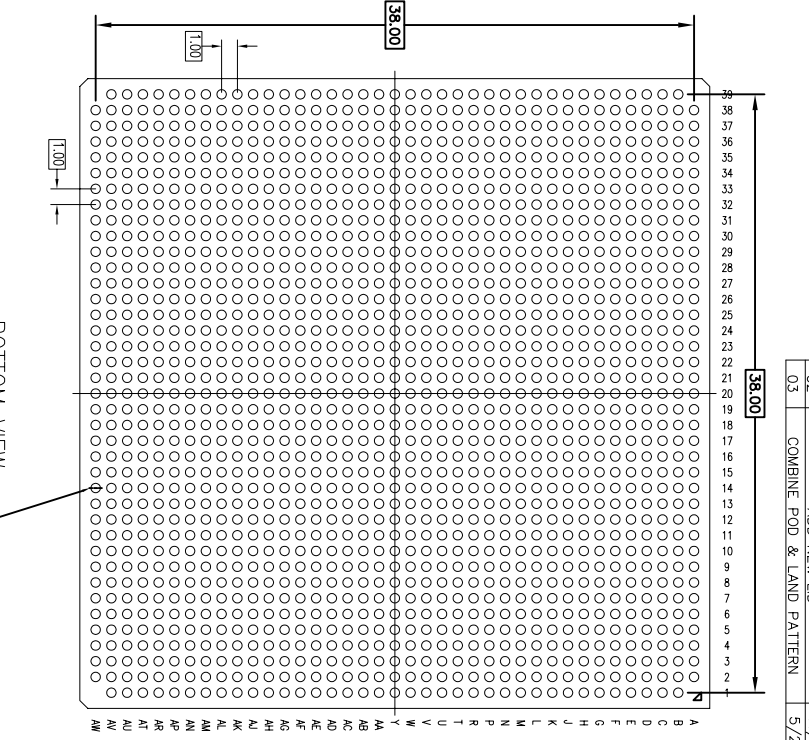
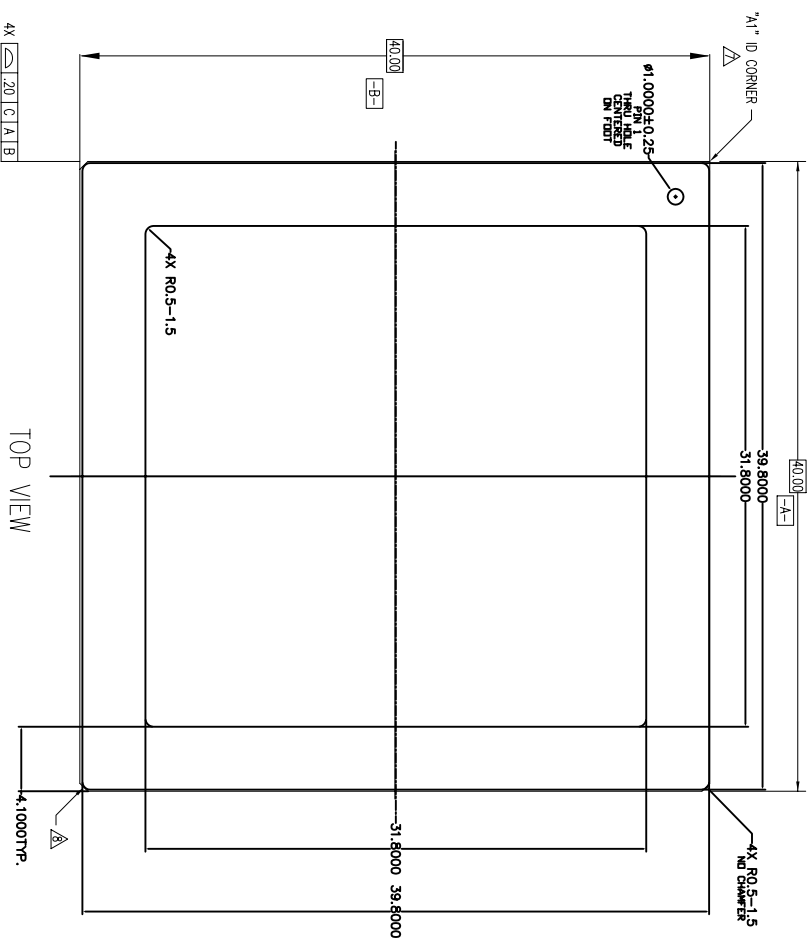


REVISIONS			
REV	DESCRIPTION	DATE	APPROVED
00	INITIAL RELEASE	8/28/11	CK
01	ADD 0.722 REF. DIMENSIONING	09/08/11	CK
02	ADD NEW LID	11/14/11	CK
03	COMBINE PAD & LAND PATTERN	5/29/13	KS

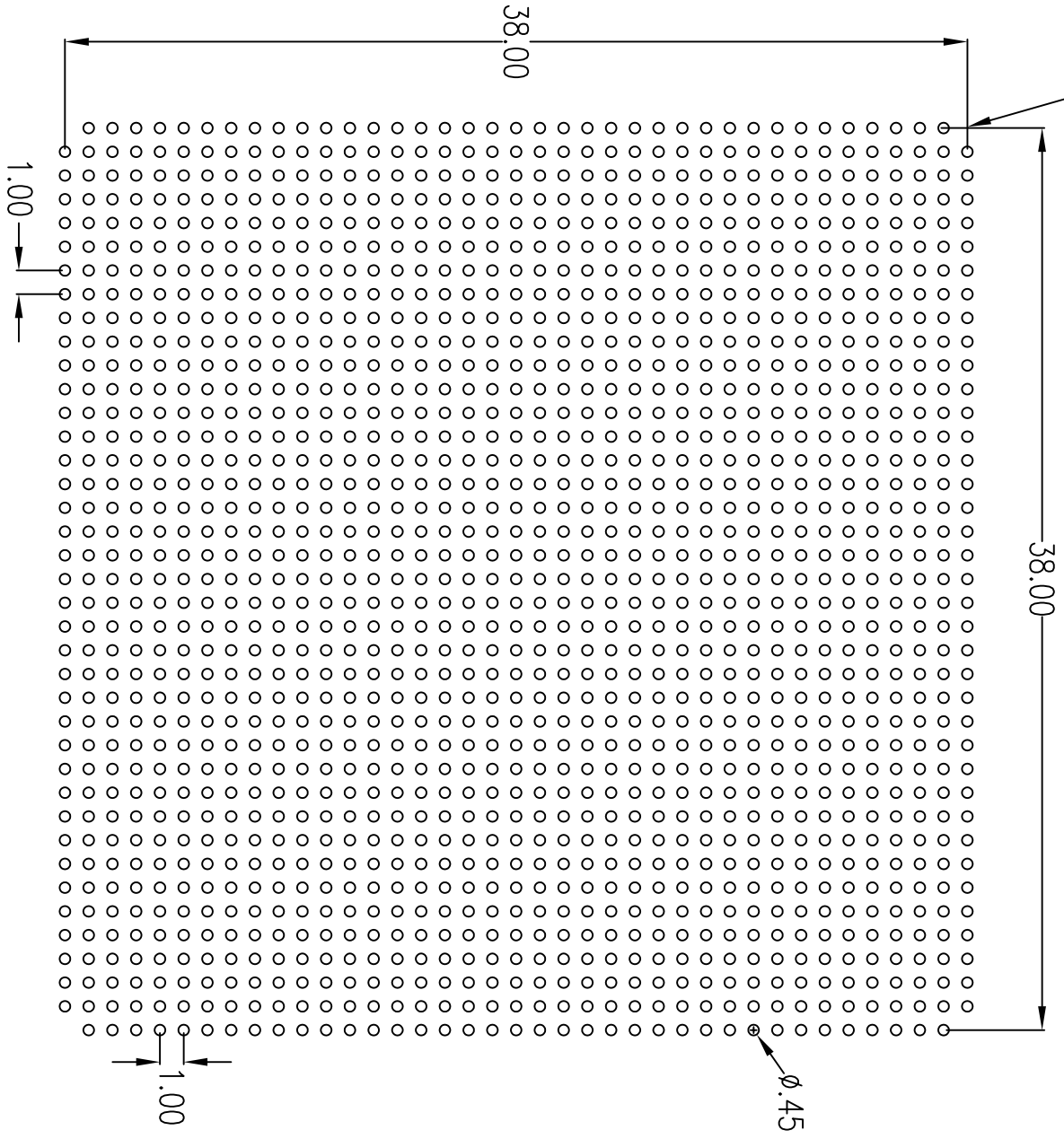


NOTES:

- 1 ALL DIMENSIONING AND TOLERANCING CONFORM TO ANSI Y14.5M-1982
- 2 "e" REPRESENTS THE BASIC SOLDER BALL GRID PITCH
- 3 "M" REPRESENTS THE MAXIMUM SOLDER BALL MATRIX SIZE
- 4 "N" REPRESENTS THE BALLCOUNT NUMBER
- 5 "A1" ID CORNER MUST BE IDENTIFIED BY CHAMFER, INK MARK, METALLIZED MARKING, INDENTATION OR OTHER FEATURE ON PACKAGE BODY
- 6 EXACT SHAPE OF EACH CORNER IS OPTIONAL
- 7 ALL DIMENSIONS ARE IN MILLIMETERS
- 8 SEATING PLANE AND PRIMARY DATUM \square ARE DEFINED BY THE SPHERICAL CROWNS OF THE SOLDER BALLS
- 9 DIMENSION "b" IS MEASURED AT THE MAXIMUM SOLDER BALL DIAMETER, PARALLEL TO PRIMARY DATUM \square


TOLERANCES UNLESS SPECIFIED	DECIMAL	ANGULAR
XXX	±	
XXXX		
XXXXX		
APPROVALS	DATE	
DRAWN: CK	08/26/11	
CHECKED		
6024 Silver Creek Valley Road San Jose, CA 95138 294-8200 294-2775 www.IDT.com		
TITLE: BLC1517 PACKAGE OUTLINE 40.0 X 40.0 mm BODY 1.0 mm BALLPITCH FCBG4		
SIZE: C	DRAWING No: PSC-4135	REV: 03
DO NOT SCALE DRAWING		

"A1" ID CORNER



RECOMMENDED LAND PATTERN DIMENSION

REVISIONS			
REV	DESCRIPTION	DATE	APPROVED
00	INITIAL RELEASE	8/26/11	CK
01	ADD 0.722 REF. DIMENSIONING	09/08/11	CK
02	ADD NEW LID	11/14/11	CK
03	COMBINE POD & LAND PATTERN	5/29/13	KS

TOLERANCES UNLESS SPECIFIED		6024 Silver Creek Valley Road	
DECIMAL	ANGULAR	San Jose, CA 95138	
±	±	284-8200	
±	±	Fax: (408) 284-2775	
APPROVALS			
DATE	TITLE	BLG1517 PACKAGE OUTLINE	
08/09/12	40.0 X 40.0 mm BODY	www.IDT.com	
CHECKED	1.0 mm BALLPITCH FCBGA	PSC-4135	
SIZE	DRAWING No.	REV	
C	PSC-4135	03	
DO NOT SCALE DRAWING		SHEET 2 OF 2	