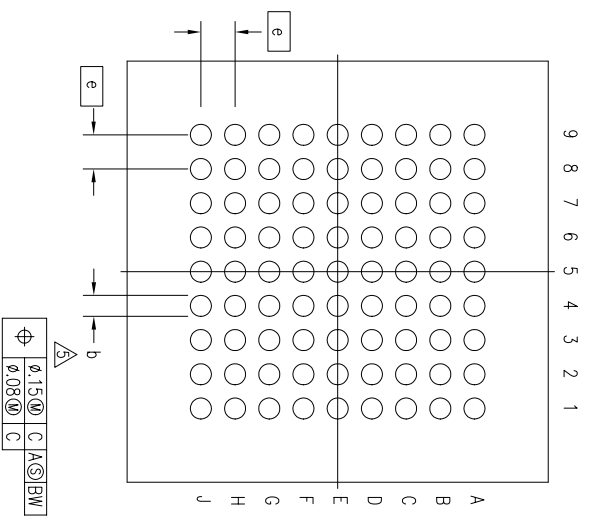
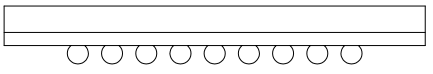
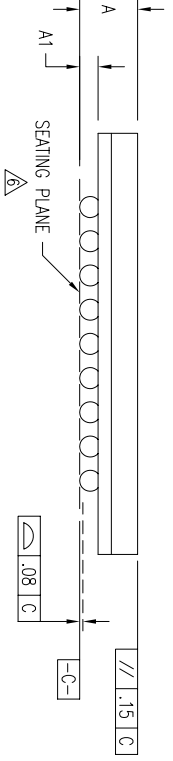
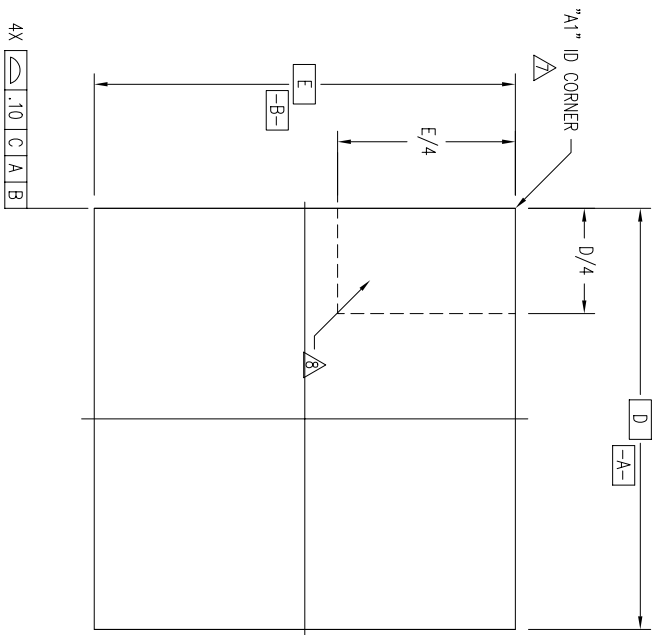
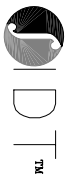


REVISIONS			DATE	APPROVED
REV	DESCRIPTION			
00	INITIAL RELEASE		3/16/10	

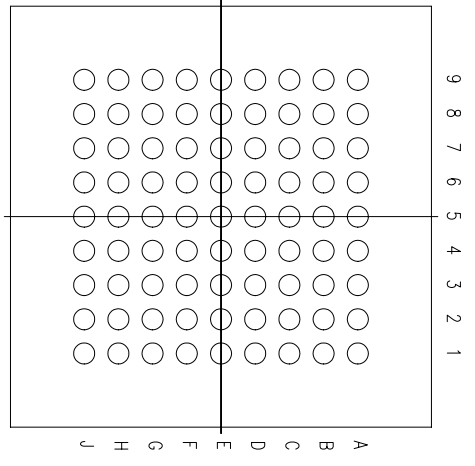


(BOTTOM VIEW)

TOLERANCES UNLESS SPECIFIED		 6024 Silver Creek Valley Road San Jose, CA 95138 PHONE: (408) 284-8200 FAX: (408) 284-8591 TWX: 910-338-2070
DECIMAL	ANGULAR	
±	±	
XXXX±	XXXX±	
APPROVALS	DATE	TITLE
DRAWN/p3xP	10/19/09	BK/BK81 PACKAGE OUTLINE
CHECKED		8.0 x 8.0 mm BODY
		FPBGA

SIZE	DRAWING No.	REV
C	PSC-4291	00
DO NOT SCALE DRAWING		SHEET 1 OF 2

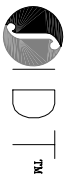
REVISIONS			
REV	DESCRIPTION	DATE	APPROVED
00	INITIAL RELEASE	3/16/10	



SYMBOL	JEDEC VARIATION			NOTE	
	NOT YET REGISTERED				
M	MIN	NOM	MAX		
B	1.00	-	1.20		
D	A1	.25	-		
L	D	8.00 BSC			
	E	8.00 BSC			
	M	9 X 9		3	
	N	81		4	
	e	.65 BSC			
	b	.35	.40	.45	5
	CENTER BALL MATRIX	N/A			

NOTES:

- 1 ALL DIMENSIONING AND TOLERANCING CONFORM TO ANSI Y14.5M-1982
- 2 "e" REPRESENTS THE BASIC SOLDER BALL GRID PITCH
- 3 "M" REPRESENTS THE MAXIMUM SOLDER BALL MATRIX SIZE
- 4 "N" REPRESENTS THE BALLCOUNT NUMBER
- 5 DIMENSION "b" IS MEASURED AT THE MAXIMUM SOLDER BALL DIAMETER, PARALLEL TO PRIMARY DATUM $\boxed{-C-}$
- 6 SEATING PLANE AND PRIMARY DATUM $\boxed{-C-}$ ARE DEFINED BY THE SPHERICAL CROWNS OF THE SOLDER BALLS
- 7 "A1" ID CORNER MUST BE IDENTIFIED BY CHAMFER, INK MARK, METALLIZED MARKING, INDENTATION OR OTHER FEATURE ON PACKAGE BODY
- 8 IF "A1" ID CORNER IS ON PACKAGE BODY, IT MUST BE LOCATED WITHIN THE ZONE INDICATED
- 9 ALL DIMENSIONS ARE IN MILLIMETERS

TOLERANCES UNLESS SPECIFIED DECIMAL ANGULAR XXX± ± XXXX± ± XXXXX± ±		 IDT ™ San Jose, CA 95138 PHONE: (408) 284-8200 FAX: (408) 4284-8591 TWX: 910-358-2070 www.IDT.com
APPROVALS DATE DRAWN $\rho 30p$ 10/19/09 CHECKED	TITLE BK/BK81 PACKAGE OUTLINE 8.0 x 8.0 mm BODY FPBGA	
SIZE C DRAWING No. PSC-4291	DO NOT SCALE DRAWING	REV 00 SHEET 2 OF 2