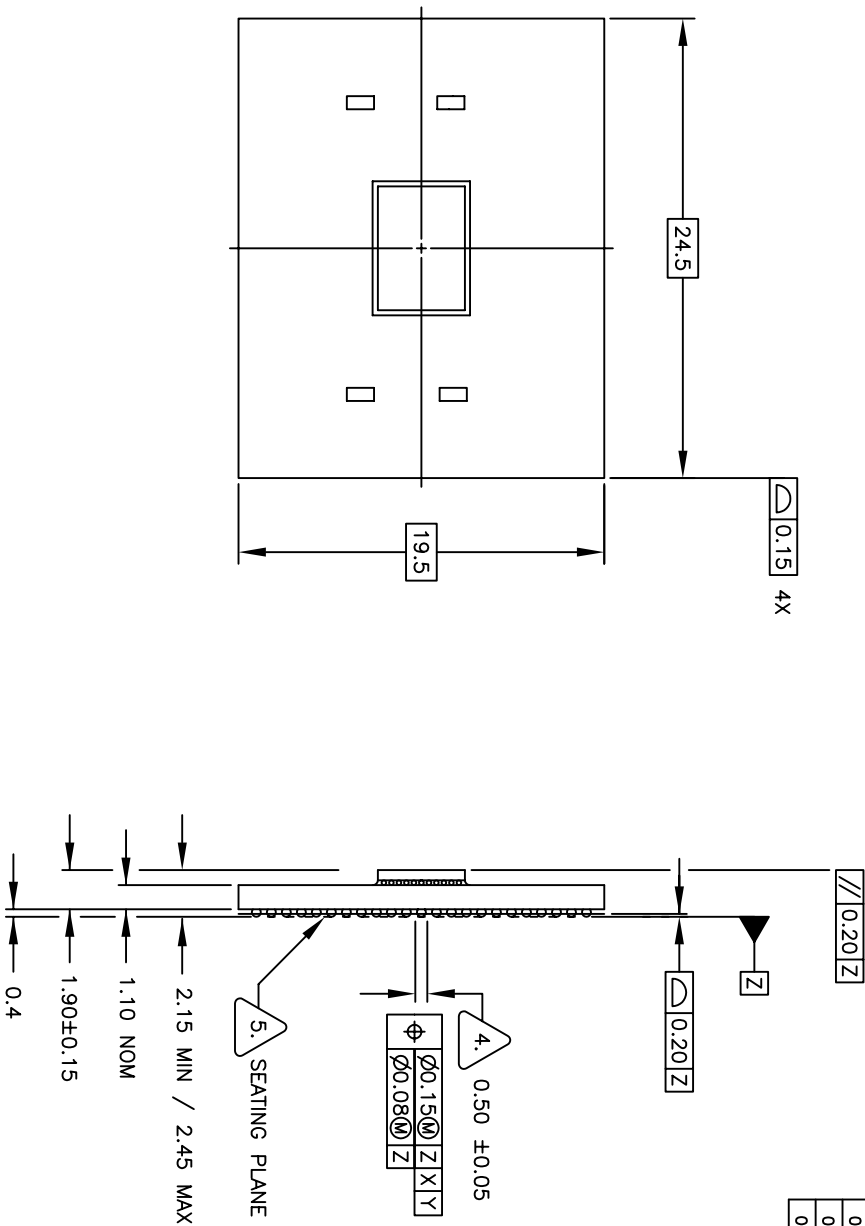


REVISIONS			
REV	DESCRIPTION	DATE	APPROVED
00	INITIAL RELEASE	09/14/04	PKP
01	CHANGED BALL DIAMETER TO 0.50 MM	12/15/05	PKP
02	ADDED CHIP CAP DIMENSIONS	11/30/06	PKP
03	ADDED MIN PKG HEIGHT DIM	02/26/07	PKP
04	COMBINE POD & LAND PATTERN	5/31/13	KS



TOP VIEW

SIDE VIEW

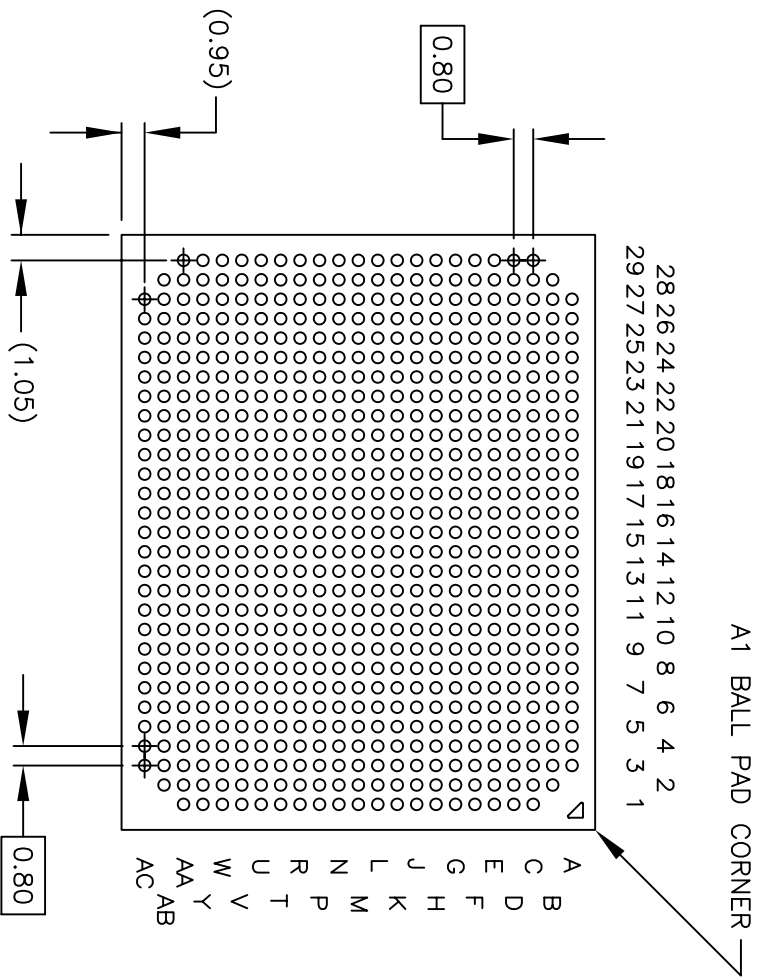
TOLERANCES UNLESS SPECIFIED		APPROVALS		DATE		TITLE	
DECIMAL	ANGULAR	DATE	DATE	TITLE			
XX ± .05	±1°	09/14/04		BJ/RJ/BIG 655 PACKAGE OUTLINE			
XXX ± .030				24.5 x 19.5 mm BODY			
				0.80 mm PITCH FBGA			
				SIZE	DRAWING NO.	REV	
				C	PSC-4137	04	
				DO NOT SCALE DRAWING			SHEET 1 OF 4



6024 Silver Creek Valley Rd
San Jose, CA 95138
PHONE: (408) 294-8200
FAX: (408) 294-5372

www.IDT.com

REVISIONS			
REV	DESCRIPTION	DATE	APPROVED
00	INITIAL RELEASE	09/14/04	PKP
01	CHANGED BALL DIAMETER TO 0.50 MM	12/15/05	PKP
02	ADDED CHIP CAP DIMENSIONS	11/30/06	PKP
03	ADDED MIN PKG HEIGHT	02/26/07	PKP
04	COMBINE POD & LAND PATTERN	5/31/13	KS



BOTTOM VIEW
(655 SOLDER BALLS)

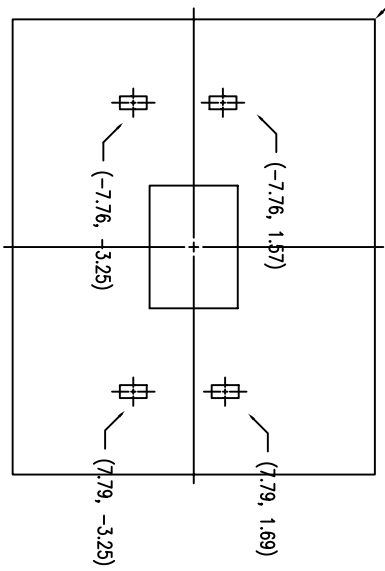
TOLERANCES UNLESS SPECIFIED		DECIMAL ANGULAR	
XX± .05		±1°	
APPROVALS	DATE	TITLE	
DRAWN	09/14/04	BJ/RJ/BJG 655 PACKAGE OUTLINE	
CHECKED		24.5 x 19.5 mm BODY	
		0.80 mm PITCH FCBGA	
SIZE	DRAWING No.	REV	
C	PSC-4137	04	
DO NOT SCALE DRAWING		SHEET 2 OF 4	



6024 Silver Creek Valley Rd
San Jose, CA 95138
PHONE: (408) 284-8200
FAX: (408) 284-3572

www.IDT.com

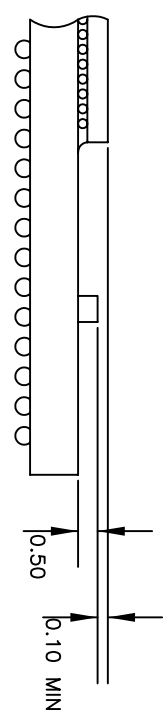
"A1" CORNER



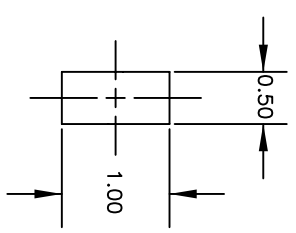
PASSIVE COMPONENT LOCATION
PACKAGE CENTER = (0,0)

NOTES: UNLESS OTHERWISE SPECIFIED

1. ALL DIMENSIONS AND TOLERANCES CONFORM TO ASME Y14.5M-1994.
2. THE MAXIMUM SOLDER BALL MATRIX SIZE IS 29 X 23.
3. THE MAXIMUM ALLOWABLE NUMBER OF SOLDER BALLS IS 667.
4. DIMENSION IS MEASURED AT THE MAXIMUM SOLDER BALL DIAMETER, PARALLEL TO PRIMARY DATUM Z.
5. PRIMARY DATUM Z AND SEATING PLANE ARE DEFINED BY THE SPHERICAL CROWNS OF THE SOLDER BALLS.



PASSIVE COMPONENT HEIGHT



PASSIVE COMPONENT
DIMENSION

REVISIONS			
REV	DESCRIPTION	DATE	APPROVED
00	INITIAL RELEASE	09/14/04	PKP
01	CHANGED BALL DIAMETER TO 0.50 MM	12/15/05	PKP
02	ADDED CHIP CAP DIMENSIONS	11/30/06	PKP
03	ADDED MIN PKG HEIGHT	02/26/07	PKP
04	COMBINE POD & LAND PATTERN	5/31/13	KS

TOLERANCES UNLESS SPECIFIED		 6024 Silver Creek Valley Rd San Jose, CA 95138 PHONE: (408) 284-8000 FAX: (408) 284-3572
DECIMAL	ANGULAR	
X.X .1	±1°	
XXX.X .030		
APPROVALS	DATE	TITLE
DRAWN: <i>gjk/p</i>	09/14/04	BJ/RJ/BJG 655 PACKAGE OUTLINE
CHECKED		24.5 x 19.5 mm BODY
		0.80 mm PITCH FCBCGA
SIZE	DRAWING No.	REV
C	PSC-4137	04
DO NOT SCALE DRAWING		SHEET 3 OF 4

