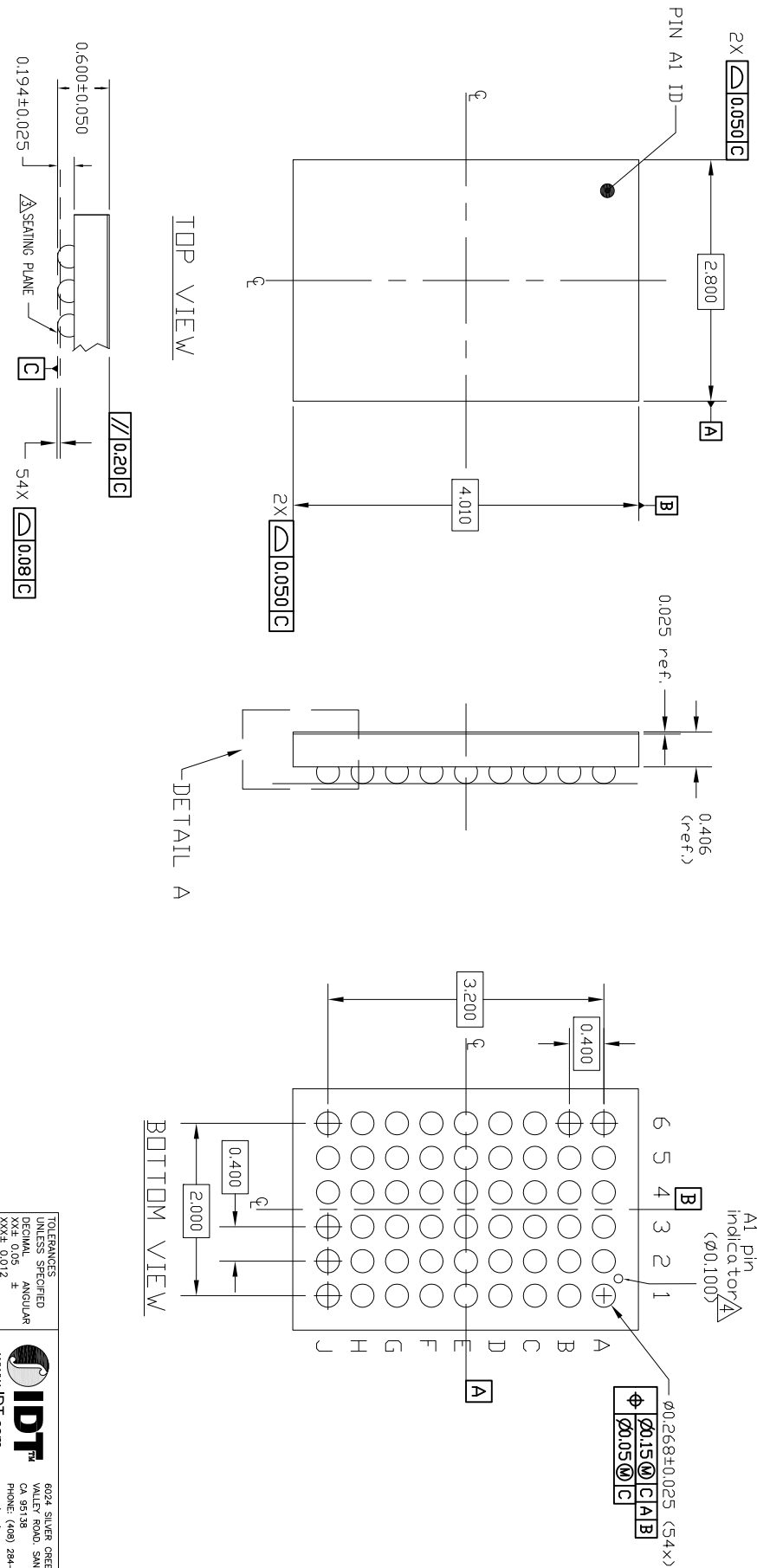


REVISIONS			
REV	DESCRIPTION	DATE	AUTHOR
00	INITIAL RELEASE	02/19/16	JH
01	CHANGE BACKSIDE COATING TO 0.25	04/13/16	JH
02	CHANGED PKG. Y-AXIS DIMENSION TO 4010UM	01/06/16	CM

NOTES:

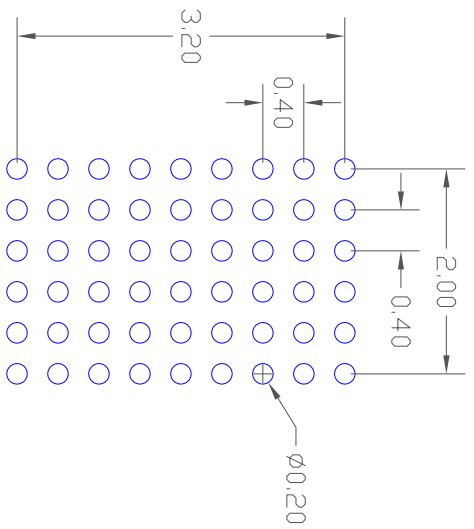
1. ALL DIMENSIONS AND TOLERANCES ARE PER ASME Y14.5M-1994.
 2. ALL DIMENSIONS ARE IN MILLIMETERS.
- SEATING PLANE AND PRIMARY DATUM -C- ARE DEFINED BY THE CONTACT POINTS OF THREE OR MORE SOLDER BALLS THAT SUPPORT THE DEVICE WHEN PLACED ON A TOP OF A PLANAR SURFACE.
 BOTTOM PIN#1 INDICATOR OPTIONAL.



DETAIL A
 (ROTATED 90 DEG CW)

TOLERANCES UNLESS SPECIFIED		6024 SILVER GREEK	
DECIMAL	ANGULAR	CALLET ROAD, SAN JOSE, CA 95128	
XX± 0.05	±	PHONE: (408) 284-4300	
XXXX± 0.012		FAX: (408) 284-4372	
APPROVALS	DATE	WWW.IDT.COM	
DRWN: D&G	02/19/16	TITLE: AHG54 PACKAGE OUTLINE	
CHECKED:		2.800x4.010mm BODY	
		0.4mm PITCH DSBGA	
SIZE: C	DRAWING No. PSC-4647	REV: 02	
DO NOT SCALE DRAWING		SHEET 1 OF 2	

REVISIONS			
REV	DESCRIPTION	DATE	AUTHOR
00	INITIAL RELEASE	02/19/16	JH
01	CHANGE BACKSIDE COATING TO 0.25	04/13/16	JH
02	CHANGED PKG. Y-AXIS DIMENSION TO 4010UM	01/08/16	CM



RECOMMENDED LAND PATTERN DIMENSION

- NOTE:
1. ALL DIMENSIONS ARE IN MM, ANGLES IN DEGREES.
 2. TOP DOWN VIEW, AS VIEW ON PCB.
 3. NSMD LAND PATTERN ASSUMED.
 4. LAND PATTERN RECOMMENDATION AS PER IPC-7351 GENERIC REQUIREMENT FOR SURFACE MOUNT DESIGN AND LAND PATTERN.

TOLERANCES UNLESS SPECIFIED		6024 SILVER GREEK	
DECIMAL	ANGULAR	VIA HOLE DIA. 50% MIN 105%	
XX± 0.05	±	P.A. 95/138	
XXX± 0.012		PHONE: (408) 284-8200	
XXXX±		FAX: (408) 284-3572	
APPROVALS	DATE	TITLE	
DRAWN /RAC	02/19/16	AHG54 PACKAGE OUTLINE	
CHECKED		2.800x4.010mm BODY	
		0.4mm PITCH DS98A	
SIZE	DRAWING No.	REV	
C	PSC-4647	02	
DO NOT SCALE DRAWING		SHEET	2 OF 2