



RX Ecosystem Partner Solution

SEGGER emWIN GRAPHIC Library



1. Solution Summary

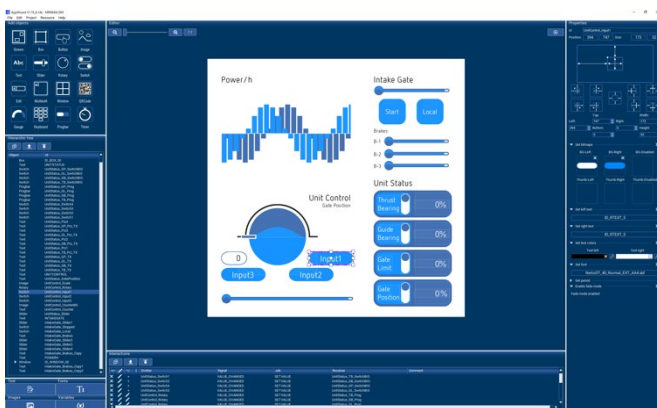
SEGGER emWin graphics library solution delivers a flexible, professional GUI platform, enabling the creation of highly efficient, high-quality, interactive graphical user interfaces for the Renesas [RA/RX](#) MCU family on any display.

2. Features/Benefits

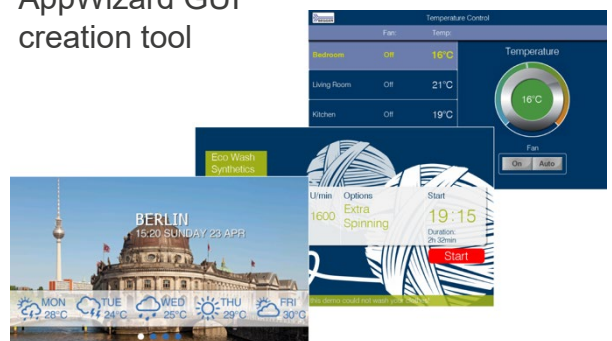
- Professional GUI library, available FOC for the RA/RX
 - Source code upgrade option available from SEGGER
- Optimized for microcontroller-based systems
- Simple to configure and integrate
- Visualization and debug tools available FOC
- Multilayer support in software and hardware
- Automatic multiple buffering support
- Supports all display types : LCD, TFT, LED, EPD
- Utilizes the RA/RX TFT LCD controller and 2D graphic engine



3. Diagrams/Graphics



AppWizard GUI creation tool



4. Target Markets and Applications

- Industrial Controls
- Smart Home/IoT
- Home Appliances
- Consumer Electronics
- Safety-critical devices
- Medical Devices

<https://www.segger.com/emwin/>



SEGGER has over 25 years of experience in Embedded Systems, producing state-of-the-art **middleware**, and offering a full set of hardware tools (for development and **production**) and **software tools**.

SILICON VALLEY
California

BOSTON
Massachusetts

HEADQUARTER
Monheim,
Germany

+ **Worldwide Distribution**

Founder
Rolf Segger

Founded
1992

Employees
> 60

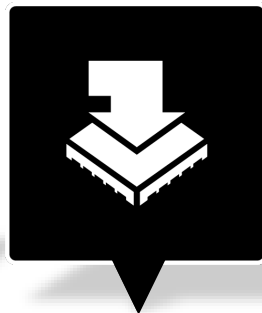
Managing Director
Ivo Geilenbrügge

CTO
Alexander Grüner



Embedded Software

For more than 25 years, SEGGER provides highly efficient software libraries that lay the groundwork for modern embedded systems. Based on this experience all components of SEGGER emPower OS are extremely reliable and can easily transferred to next generation microcontrollers



Debug Probes

The J-Link debug probes with their outstanding performance, robustness, and ease of use are the market leading debug probes today. The J-Trace PRO sets a benchmark for instruction tracing with its streaming trace function that enables unlimited tracing at full clock speed.



Software Tools

The Embedded Experts at SEGGER support developers and software engineers of embedded systems and Internet-of-Things environments with High-End software/middleware tools to develop, create, verify, test, and debug their embedded application, and target system or devices.



Production Tools

SEGGER's in-circuit flash programming solutions are ultra-fast and reliable, making them the perfect choice for mass production environments. The portfolio includes devices specialized for service environments and prototype programming.