

## RZ Ecosystem Partner Solution NSW CrackVision Light



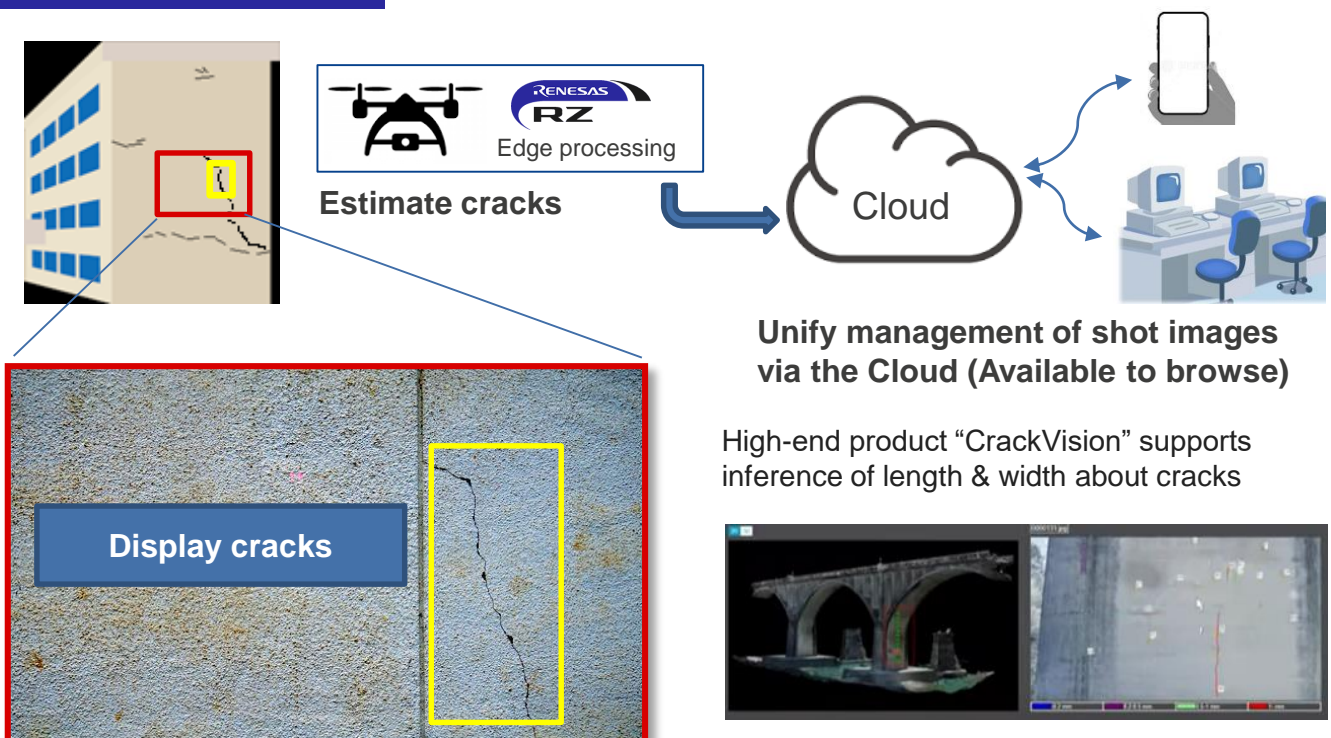
### Solution Summary

**CrackVision Light** is the solution for estimating cracks in concrete of a structural object. Low power efficiency and real-time processing are made possible by DRP-AI of [RZ/V series](#).

### Features/Benefits

- Use image data to estimate cracks in concrete, mortar, etc.
- Work on site is only shooting image, which greatly contributes to the reduction of work man-hours and the AI feature improves the accuracy of finding cracks
- DRP-AI reduces power consumption and enables development of compact design to be easily installed into edge devices

### Block Diagrams/Graphics



### Target Markets and Applications


- Inspection and maintenance for infrastructure equipment, large-scale facility made by concrete

[https://www.nsw.co.jp/english/e\\_jigyo.html](https://www.nsw.co.jp/english/e_jigyo.html)

## Corporate Profile

Name	NIPPON SYSTEMWARE CO., LTD.
Corporate Brand	NSW
Business Philosophy	Humanware By Systemware
Established	August 3, 1966
Representative	President & Representative Director Shoji Tada
Head Office	31-11, Sakuragaoka-cho, Shibuya-ku, Tokyo 150-8577, Japan
Capital	5.5 billion yen
Stock Exchange Listing	The 1st Section of the Tokyo Stock Exchange (Securities code number: 9739)
Description of Business	IT solutions, Services solutions, Product solutions
Employees	(Consolidated) 2,290 (As of March 31, 2021) (Non-consolidated) 1,817
Affiliates	<ul style="list-style-type: none"> <li>• NSW Techno Services Co., Ltd.</li> <li>• NSW China Co., Ltd.</li> <li>• NSW WITH CO., LTD.</li> </ul>

## Offices



- Osaka Office**  
 Crystal Tower 17F 1-2-27, Shiromi,  
 Chuo-ku, Osaka City, Osaka 540-6017
- Takamatsu IT Center**  
 (Data Center)
- Hiroshima Office**  
 13-11, Nobori-cho, Naka-ku, Hiroshima City,  
 Hiroshima Prefecture 730-0016
- Fukuoka Office**  
 2-17-5, Hakataekihigashi, Hakata-ku,  
 Fukuoka City, Fukuoka Prefecture  
 812-0013
- Kitakyushu Office**  
 #201 Kitakyushu Telework Center,  
 6F AIM Bldg, 3-8-1, Asano,  
 Kokurakita-ku, Kitakyushu City,  
 Fukuoka Prefecture, 802-0001
- NSW China**  
 Rm. 9, 3F, Tower B, Tian Yuan Gang Center, Dongsanhuan  
 North Road, Chaoyang District, Beijing
- Taiwan Office**  
 11F., No.209, Sec. 1, Civic Blvd., Datong Dist., Taipei City 10351, Taiwan
- Head Office**  
 31-11, Sakuragaoka-cho, Shibuya-ku,  
 Tokyo 150-8577
- Shibuya IT Core**  
 1-1, Nanpeidai-cho, Shibuya-ku,  
 Tokyo 150-0036
- Shibuya Office**  
 2-15, Nanpeidai-cho, Shibuya-ku,  
 Tokyo 150-0036
- Shibuya CI Bldg.**  
 31-10, Sakuragaoka-cho, Shibuya-ku,  
 Tokyo 150-0031
- Sakuragaoka Development Center**  
 Shibuya Infoss Annex 5F., 12-10,  
 Sakuragaoka-cho, Shibuya-ku,  
 Tokyo 150-0031
- Yamanashi IT Center**
- Nagoya Office**  
 2-14-19, Meiekiminami, Nakamura-ku,  
 Nagoya City, Aichi Prefecture 450-0003
- Data Center:Shibuya,Yamanashi,Takamatsu**