



Integrated Device Technology, Inc.  
6024 Silver Creek Valley Road, San Jose, CA 95138

## PRODUCT/PROCESS CHANGE NOTICE (PCN)

PCN #: **TB0711-01** DATE: **12/06/2007**

Product Affected: **950 mils x 950 mils PQFP 132L**  
**shipped in tray**

Date Effective: **3/06/2008**

MEANS OF DISTINGUISHING CHANGED DEVICES:

- ☐ Product Mark  
☐ Back Mark  
☐ Date Code

☒ Other Supplier part# on side of tray

Contact: Geoffrey Cortes

Title: Product Quality Assurance

Phone #: (408) 284-8321

Fax #: (408) 284-1450

E-mail: [Geoffrey.Cortes@idt.com](mailto:Geoffrey.Cortes@idt.com)

Attachment: ☒ Yes ☐ No

Samples: N/A

### DESCRIPTION AND PURPOSE OF CHANGE:

- ☐ Die Technology  
☐ Wafer Fabrication Process  
☐ Assembly Process  
☐ Equipment  
☐ Material  
☐ Testing  
☐ Manufacturing Site  
☐ Data Sheet  
☒ Other - Packing Material

This notification is to advise our customers that IDT has qualified new shipping trays for 950 mils x 950 mils PQFP 132L products.

There is no change to the number of units per tray and tray dimensions but changes to the tray withstand temperature.

Attachment I details the change.

Attachment II provides a list of affected products and tray drawings.

Attachment III provides the existing and new tray drawings.

### RELIABILITY/QUALIFICATION SUMMARY:

The new trays have passed IDT qualification. Please see Attachment I for the qualification results.

### CUSTOMER ACKNOWLEDGMENT OF RECEIPT:

IDT records indicate that you require written notification of this change. Please use the acknowledgement below or E-Mail to grant approval or request additional information. If IDT does not receive acknowledgement within 30 days of this notice it will be assumed that this change is acceptable.

IDT reserves the right to ship either version manufactured after the process change effective date until the inventory on the earlier version has been depleted.

Customer: \_\_\_\_\_

☐ *Approval for shipments prior to effective date.*

Name/Date: \_\_\_\_\_

E-Mail Address: \_\_\_\_\_

Title: \_\_\_\_\_

Phone # /Fax #: \_\_\_\_\_

CUSTOMER COMMENTS: \_\_\_\_\_

### IDT ACKNOWLEDGMENT OF RECEIPT:

RECD. BY: \_\_\_\_\_

DATE: \_\_\_\_\_



Integrated Device Technology, Inc.  
6024 Silver Creek Valley Road, San Jose, CA 95138

## PRODUCT/PROCESS CHANGE NOTICE (PCN)

### ATTACHMENT I - PCN #: TB0711-01

**PCN Type:** Packing Material

**Data Sheet Change:** None

**Detail of Change:** This notification is to advise our customers that IDT has qualified new shipping trays for 950 mils x 950 mils PQFP 132L products.

There is no change to the number of units per tray and tray dimensions but changes to the tray withstand temperature.

The new shipping trays have passed IDT's internal qualification requirements.

Customer may receive product shipped in the existing trays and new trays in one single shipment until the existing trays are depleted.

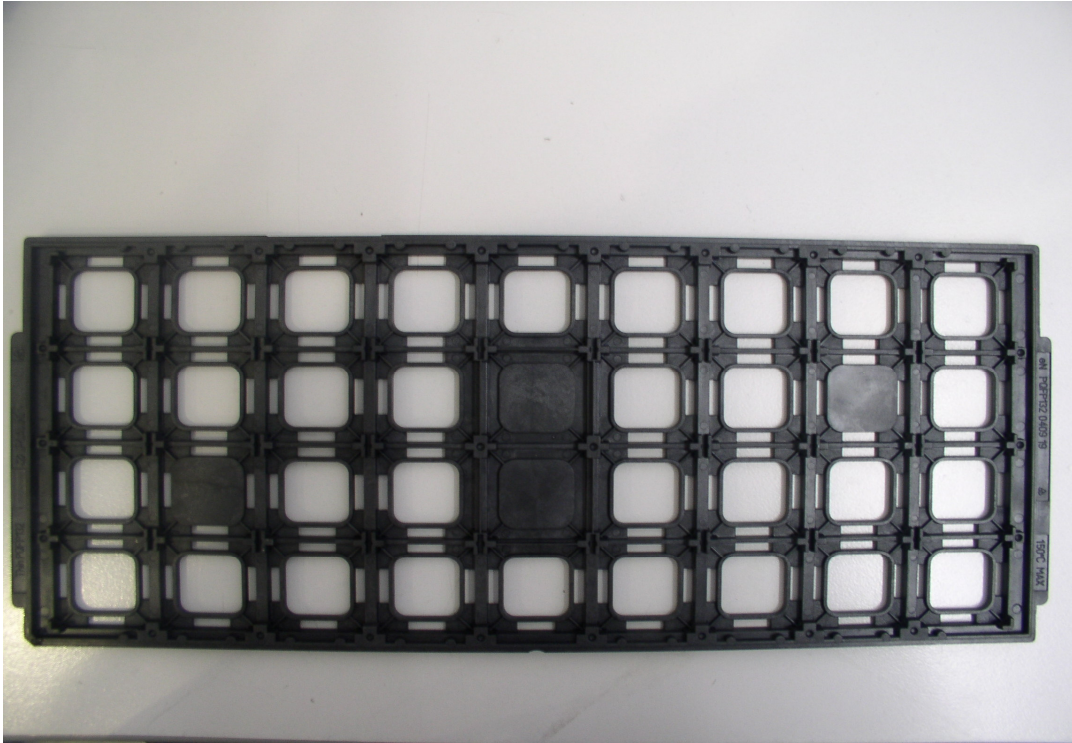
Description	Existing Shipping Tray	New Shipping Tray
Supplier	E-Pak	NK Tech
Supplier Part Number	eN PQFP 132 0409 19	TMHT-040901-01
IDT Part Number	P7-210-000	P7-227-000
Tray Matrix	4 X 9	4 X 9
Qty per Tray	36 units	36 units
Rating Temperature	150°C	135°C
Tray Material	MPPO	PPE + CF
Pocket Size (WxL)	27.84 X 27.84 +/- 0.13 mm	28.09 X 28.09 +/- 0.13 mm
Tray Drawing Number	MSC-5706	MSC-5755



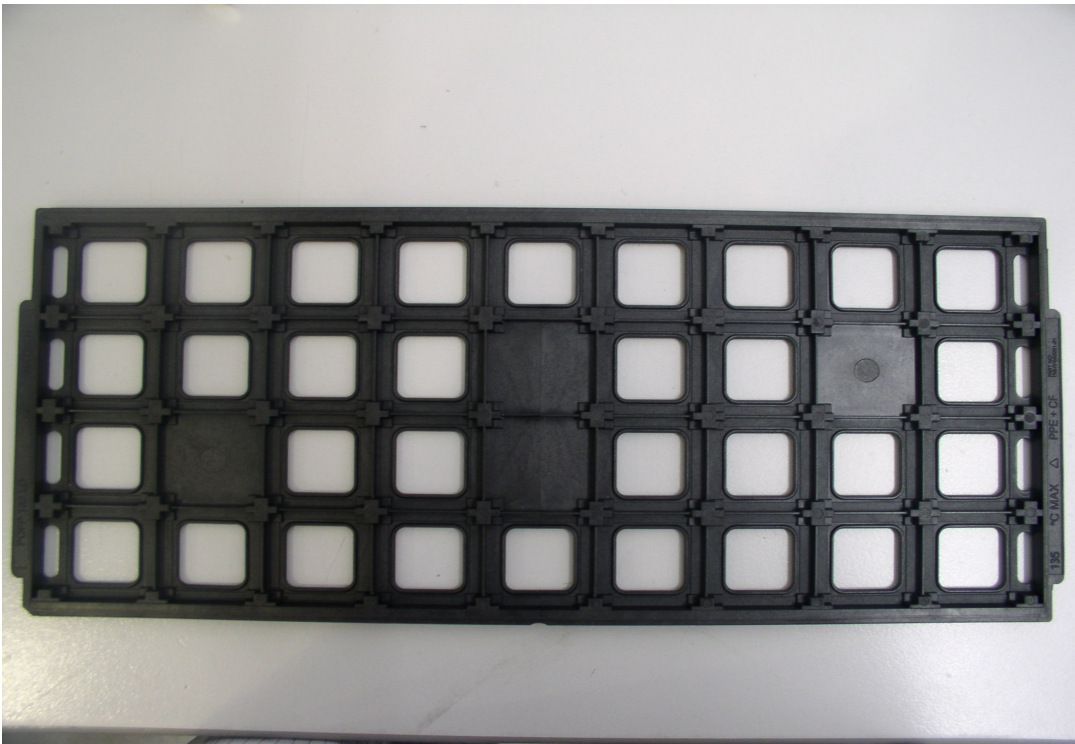
Integrated Device Technology, Inc.  
6024 Silver Creek Valley Road, San Jose, CA 95138

## PRODUCT/PROCESS CHANGE NOTICE (PCN)

### ATTACHMENT I - PCN #: TB0711-01



Existing Shipping Tray



New Shipping Tray



Integrated Device Technology, Inc.  
6024 Silver Creek Valley Road, San Jose, CA 95138

## **PRODUCT/PROCESS CHANGE NOTICE (PCN)**

### **ATTACHMENT I - PCN #: TB0711-01**

**Qualification Plan #:** BC07-07-01

**Qualification Test Plan and Result:**

<b>Qualification Test and Conditions</b>	<b>Reject / Sample Size</b>	<b>Result</b>
5 Feet Drop Test (6 drops, 1 drop per side @ standard packing)	0/4 trays (144 units)	Pass
Manufacturability (IC Fitting, Trim & Form Machine, Vision System, Test Handler)	0/5 trays	Pass
Visual/Mechanical (Chip, crack, pit, incomplete fill, contamination, burr on tray pocket)	0/5 trays	Pass
Static Electricity Test (100 volts max)	0/5 trays	Pass
Surface Resistivity Test ( $1 \times 10^5$ to $1 \times 10^{11}$ ohms per sq)	0/5 trays	Pass
Dimensional (critical dimensions based on drawing)	0/5 trays	Pass
Bake Test (135°C@24 hours, bundled and singulated methods)	0/8 trays	Pass



Integrated Device Technology, Inc.  
6024 Silver Creek Valley Road, San Jose, CA 95138

## PRODUCT/PROCESS CHANGE NOTICE (PCN)

### ATTACHMENT II - PCN #: TB0711-01

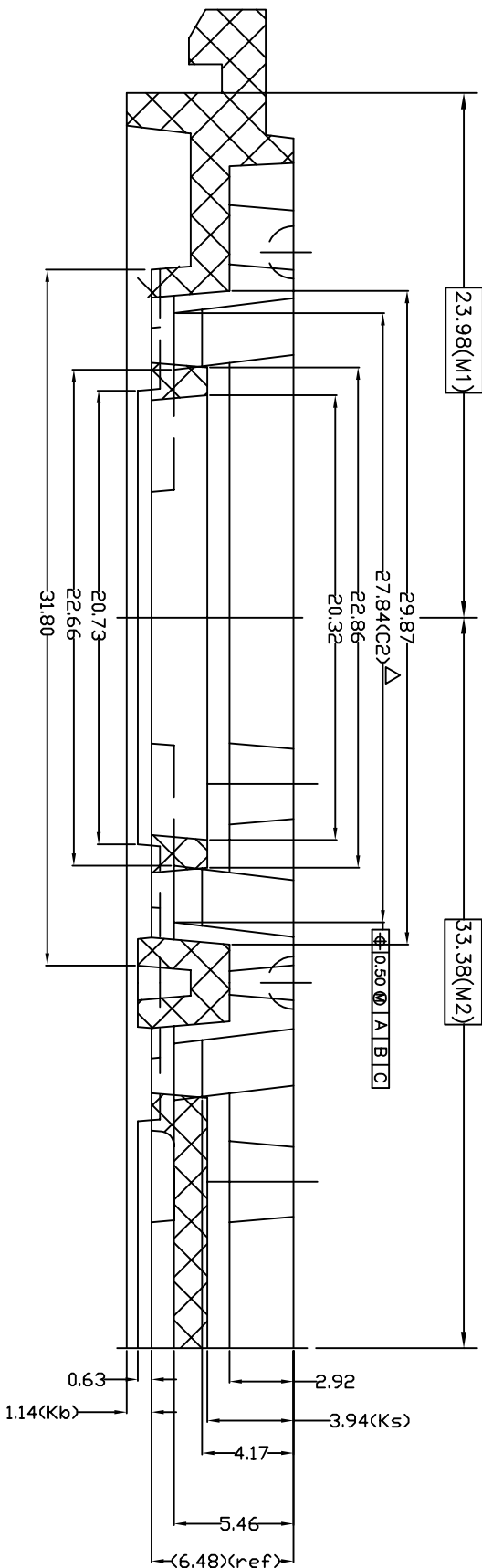
#### Affected Part Number

IDT Part Number	IDT Part Number	IDT Part Number	IDT Part Number
IDT7050L25PQF	IDT723613L15PQF	IDT723651L20PQF	IDT72V3614L15PQF
IDT7050L35PQF	IDT723613L20PQF	IDT723651L20PQFI	IDT72V3614L20PQF
IDT7050S25PQF	IDT723613L20PQFI	IDT723652L12PQF	IDT72V3622L10PQF
IDT7050S35PQF	IDT723614L15PQF	IDT723652L15PQF	IDT72V3622L15PQF
IDT7052L20PQF	IDT723614L20PQF	IDT723662L12PQF	IDT72V3631L15PQF
IDT7052L20PQFG	IDT723614L20PQFI	IDT723662L15PQF	IDT72V3631L20PQF
IDT7052L25PQF	IDT723622L12PQF	IDT723672L12PQF	IDT72V3632L10PQF
IDT7052L25PQFI	IDT723622L15PQF	IDT723672L15PQF	IDT72V3632L15PQF
IDT7052L35PQF	IDT723631L15PQF	IDT72V3611L12PQF	IDT72V3641L15PQF
IDT7052S20PQF	IDT723631L20PQF	IDT72V3611L15PQF	IDT72V3641L20PQF
IDT7052S25PQF	IDT723631L20PQFI	IDT72V3611L15PQFG	IDT72V3642L10PQF
IDT7052S35PQF	IDT723632L12PQF	IDT72V3611L20PQF	IDT72V3642L15PQF
IDT7052S35PQFI	IDT723632L15PQF	IDT72V3612L12PQF	IDT72V3651L15PQF
IDT723611L15PQF	IDT723641L15PQF	IDT72V3612L12PQFG	IDT72V3651L20PQF
IDT723611L20PQF	IDT723641L20PQF	IDT72V3612L15PQF	IDT72V3652L10PQF
IDT723611L20PQFG	IDT723641L20PQFI	IDT72V3612L15PQFG	IDT72V3652L15PQF
IDT723611L20PQFI	IDT723642L12PQF	IDT72V3612L20PQF	IDT72V3662L10PQF
IDT723612L15PQF	IDT723642L12PQFG	IDT72V3613L12PQF	IDT72V3662L15PQF
IDT723612L15PQFG	IDT723642L15PQF	IDT72V3613L15PQF	IDT72V3672L10PQF
IDT723612L20PQF	IDT723642L15PQFGI	IDT72V3613L20PQF	IDT72V3672L15PQF
IDT723612L20PQFI	IDT723651L15PQF	IDT72V3614L12PQF	IDT72V3672L15PQFI

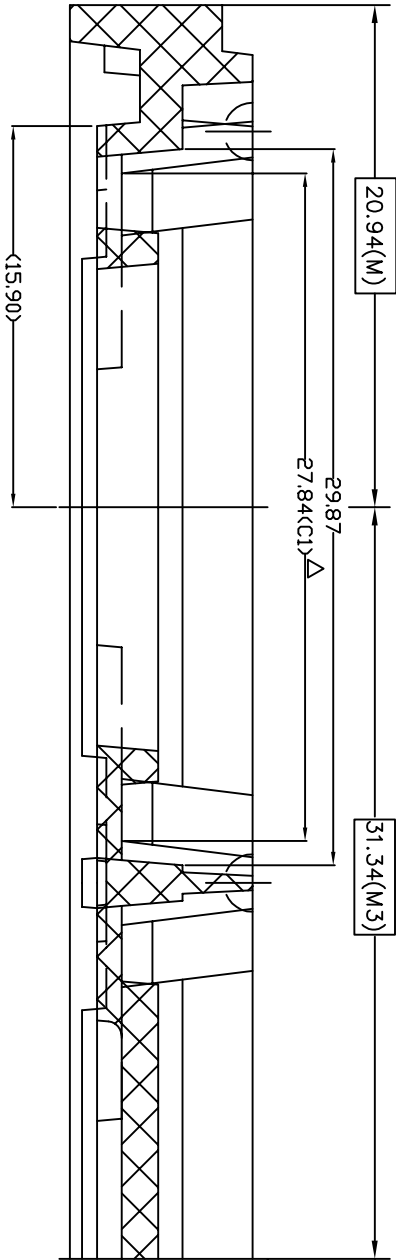




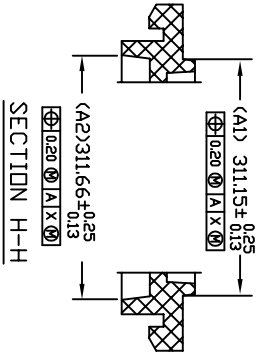
REVISIONS			
REV	DESCRIPTION	DATE	APPROVED
00	INITIAL RELEASE	07/10/06	KK Thee



SECTION A-A



SECTION B-B



SECTION J-J

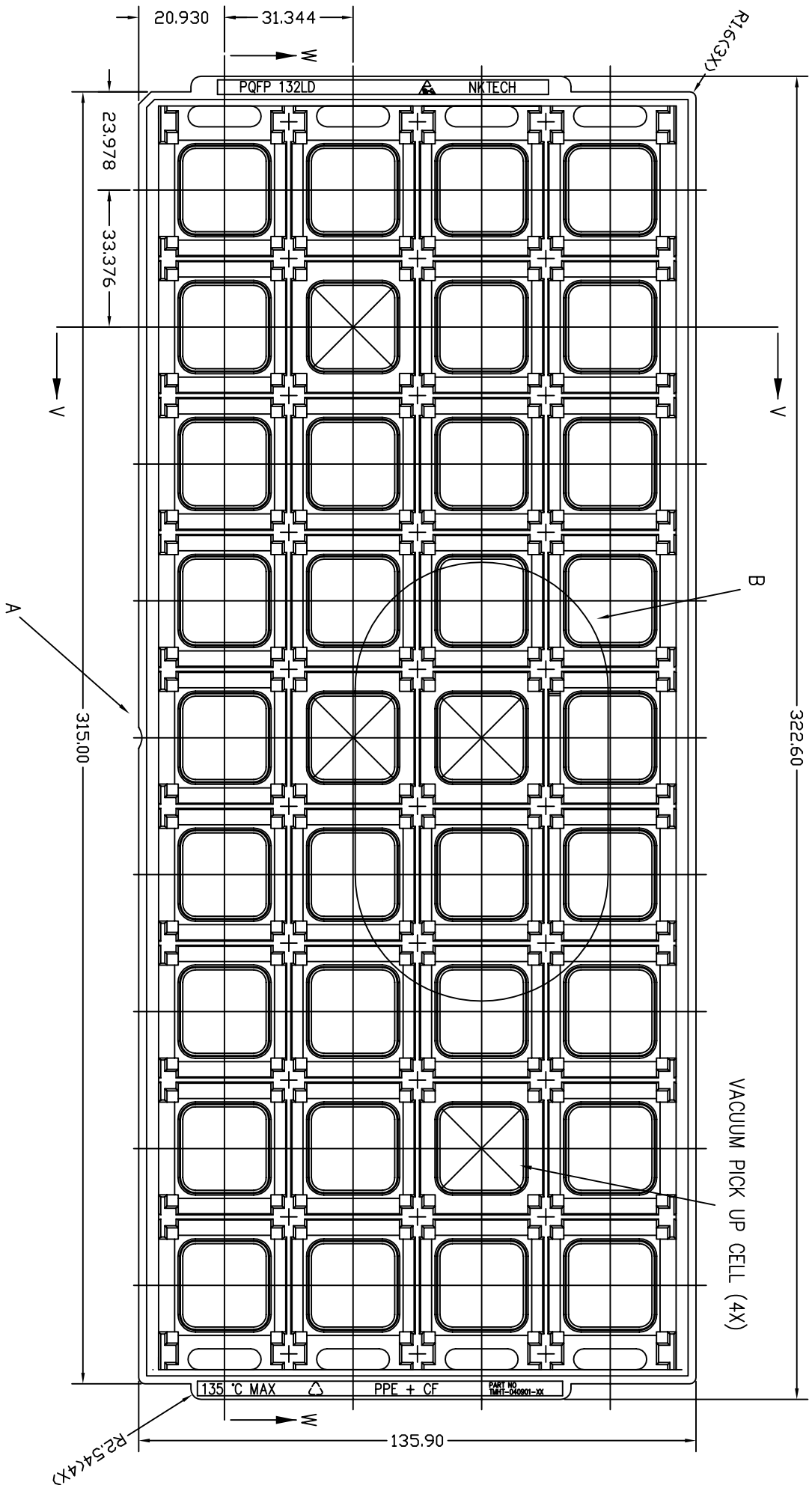
TOLERANCES UNLESS OTHERWISE SPECIFIED		DECIMAL		ANGLE	
XX ±.25		XX ±.13		XX ±.5°	
XX ±.13		XX ±.13		XX ±.13	
APPROVALS		DATE		SCALE	
DRAWN		DATE		N/A	
CHECKED		DATE		B	
TITLE: PQ/PQG 132 SHIPPING TRAY		STOCK NO. P7-210-000		DRAWING NO. MSC-5706	
DO NOT SCALE DRAWING		SHEET 2 OF 2		REV 00	



6024 Silver Creek Valley Road  
San Jose, CA 95138  
PHONE: (408) 284-8200  
FAX: (408) 284-3572

www.idt.com

REVISIONS			
REV	DESCRIPTION	DATE	APPROVED
00	INITIAL RELEASE	07/11/07	KK Thee



TOLERANCES UNLESS OTHERWISE SPECIFIED			
DECIMAL	ANGLE	XX ±.13	XXX ±.15
.XX ±.25	±.5°		
APPROVALS	DATE	DRAWN	
CHECKED		TITLE:	
		Pq/Pqg 132	
		SHIPPING TRAY	
		STOCK NO.	DRAWING NO.
		P7-227-000	MSC-5755
		DO NOT SCALE DRAWING	SHEET 1 OF 3


  
 6024 Silver Creek Valley Road,
   
 San Jose, CA 95138
   
 PHONE: (408) 284-8200
   
 FAX: (408) 284-3572

www.IDT.com

SCALE

N/A

SIZE

B

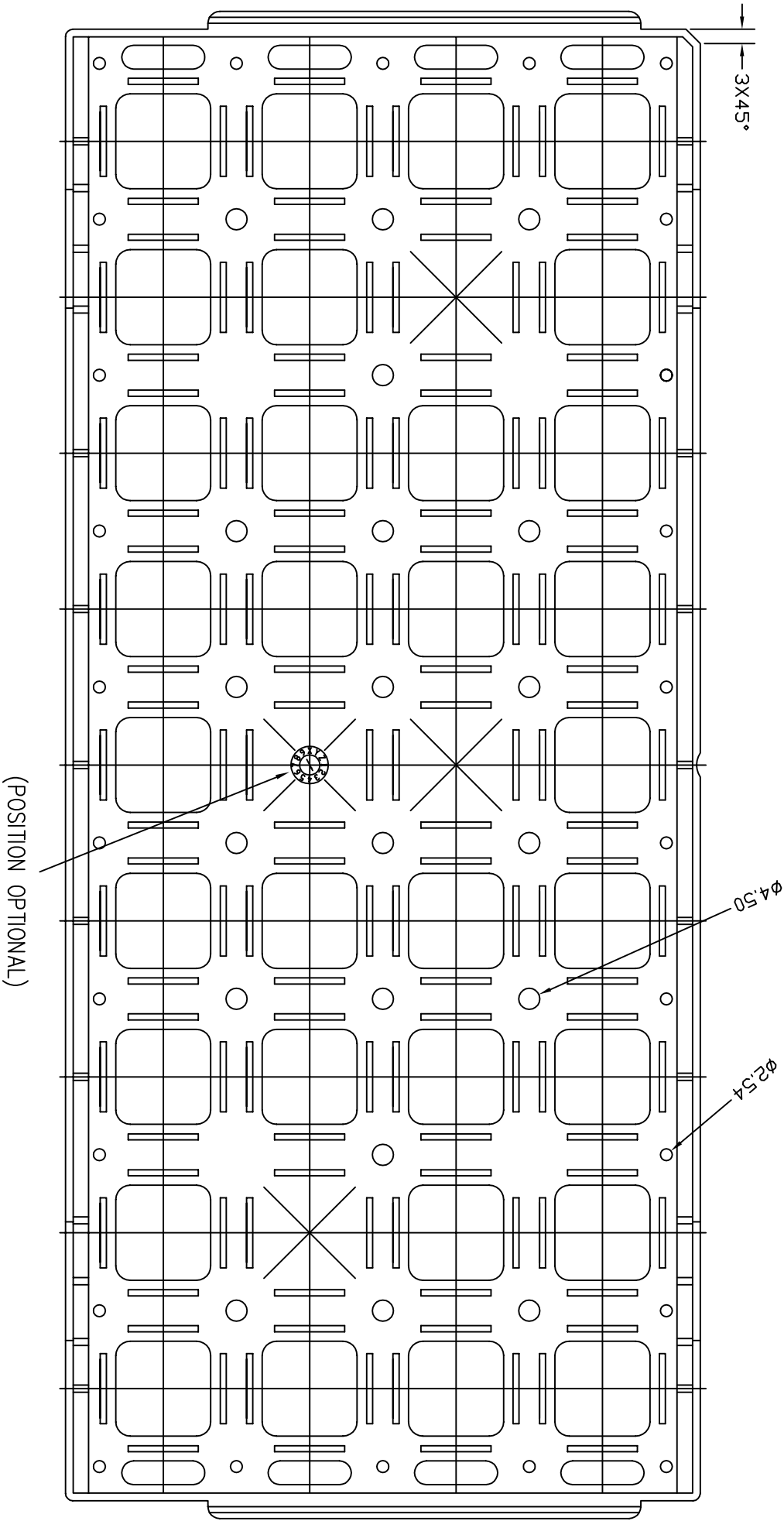
REV

00





REVISIONS			
REV	DESCRIPTION	DATE	APPROVED
00	INITIAL RELEASE	07/11./07	KK Thee



TOLERANCES UNLESS OTHERWISE SPECIFIED			
DECIMALS	25	ANGLE	± .5°
.X	± .25		
.XX	± .13		
.XXX	± .13		
APPROVALS	DATE	TITLE:	
DRAWN		Pq/PqG 132	
CHECKED		SHIPPING TRAY	
		STOCK NO.	DRAWING NO.
		P7-227-000	MSC-5755
FILE: MSC17011	DO NOT SCALE DRAWING	SHEET 3 OF 3	



6024 Silver Creek Valley Road  
San Jose, CA 95138  
PHONE: (408) 284-8200  
FAX: (408) 284-3572

www.IDT.com

SCALE  
N/A

SIZE  
B

REV  
00