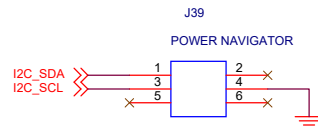
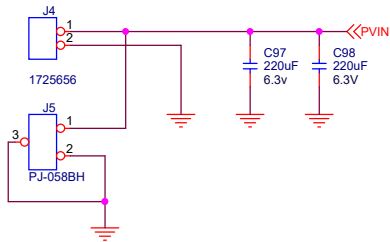
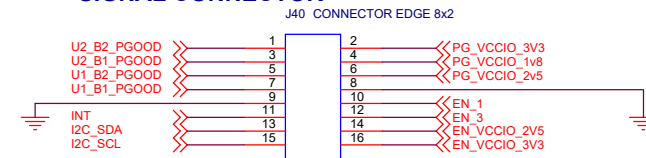


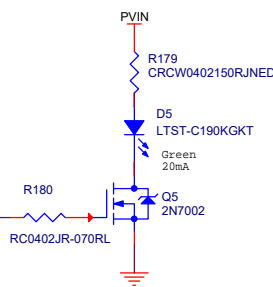
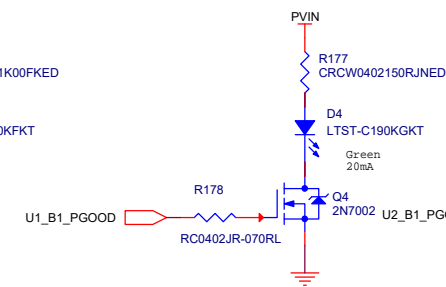
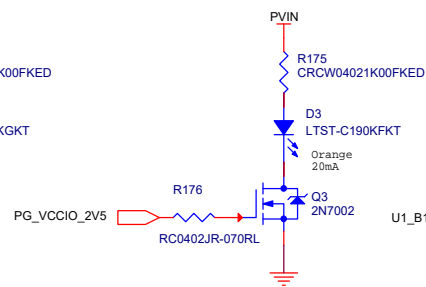
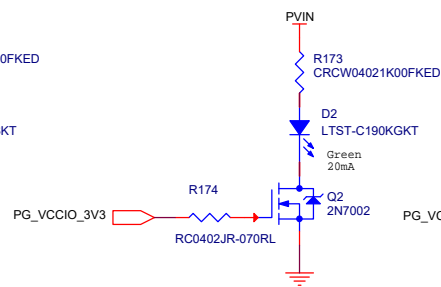
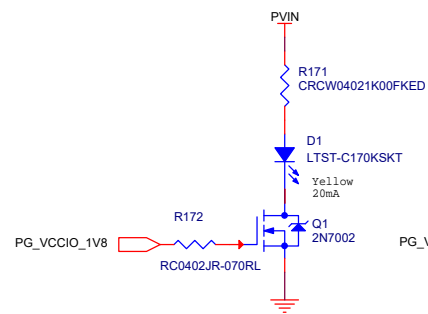
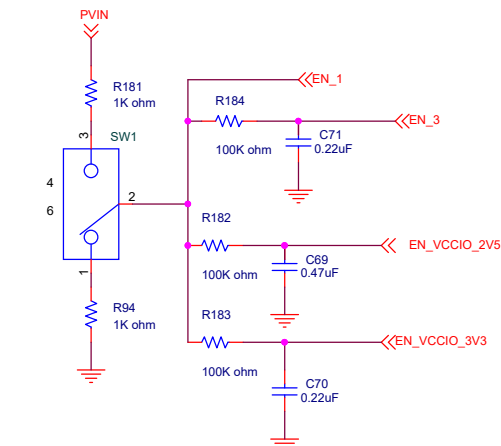
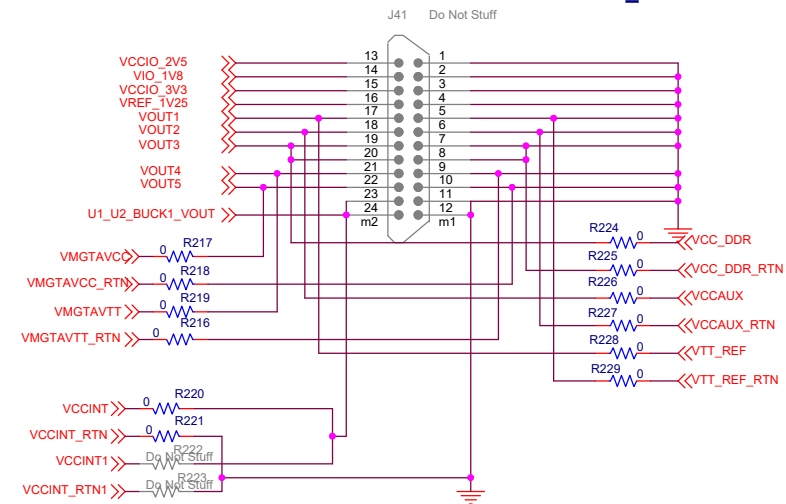
Title		
Power Tree		
Size	Document Number	Rev
B	<Doc>	A
Date:	Wednesday, February 13, 2019	Sheet 1 of 7



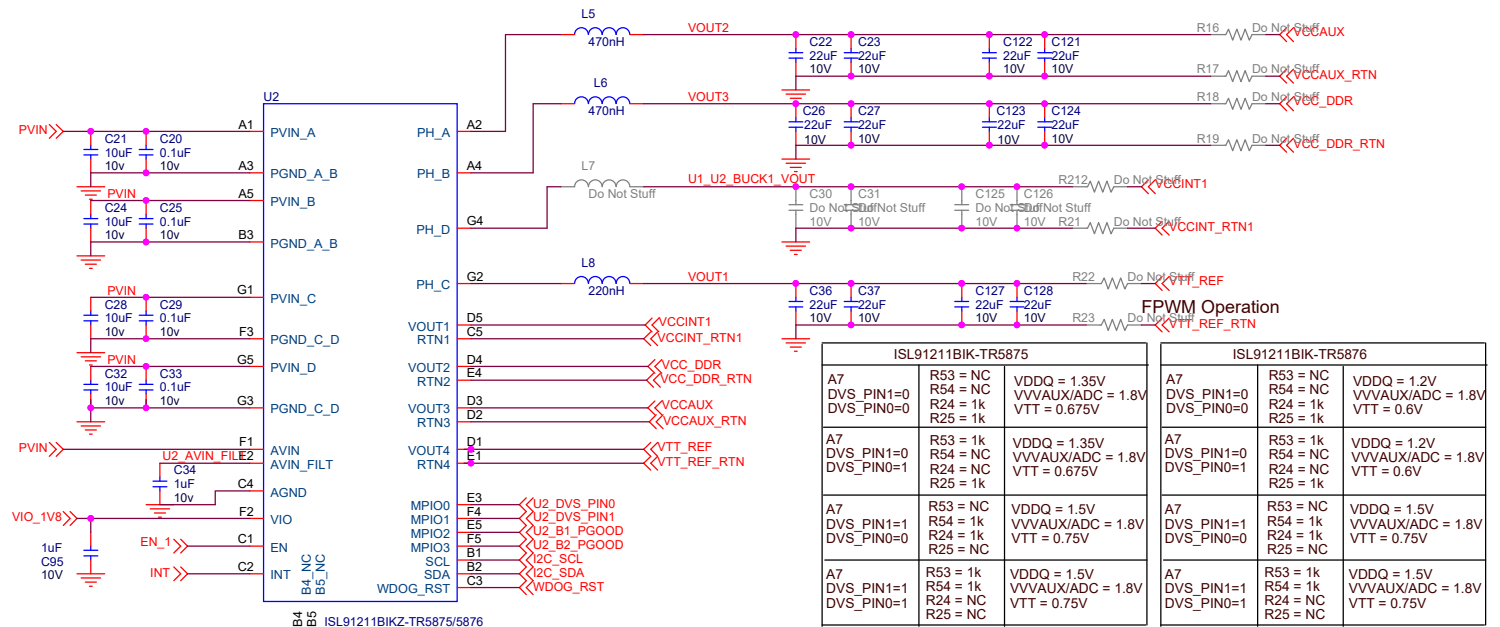
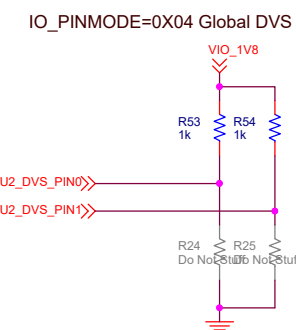
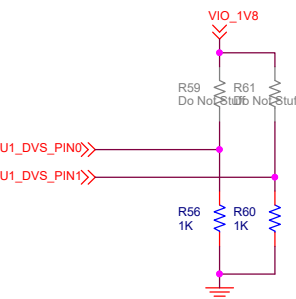
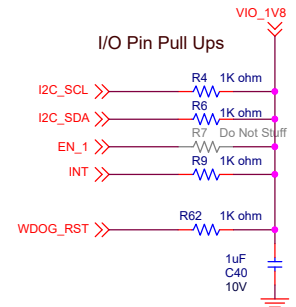
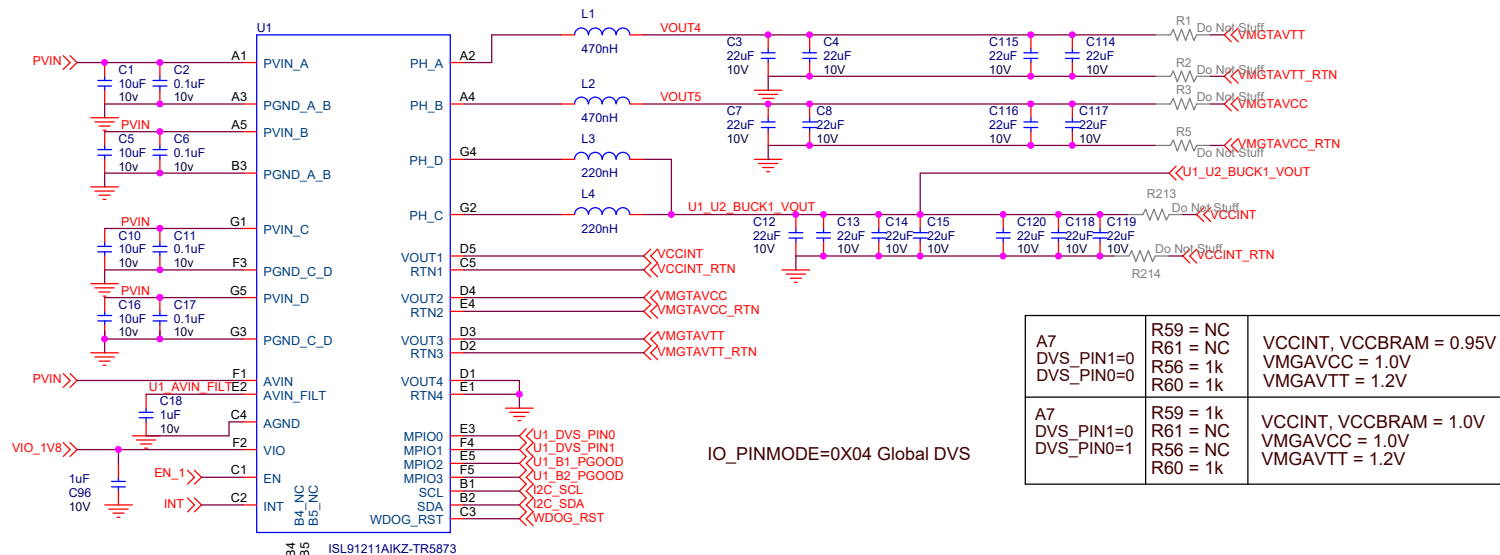
## SIGNAL CONNECTOR



## POWER CONNECTOR MOLEX PART NUMBER: 442060007\_sd

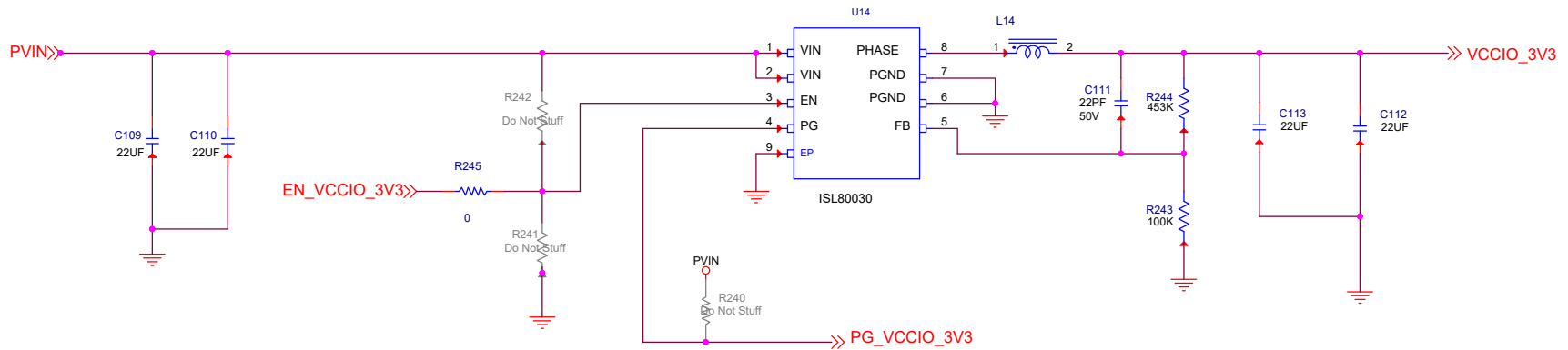


Title		
HardWare		
Size	Document Number	Rev
B	<Doc>	A
Date:	Tuesday, August 13, 2019	Sheet 2 of 7



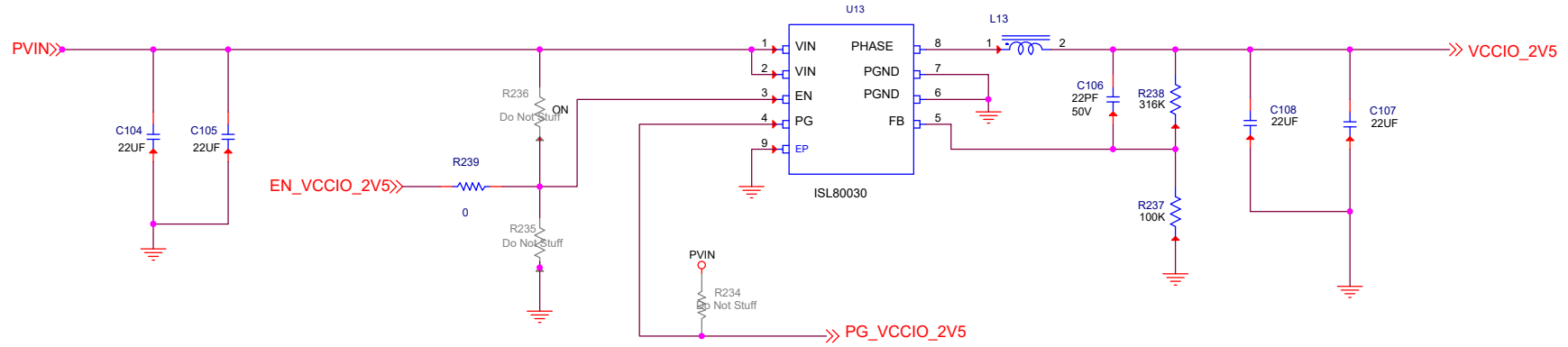
Title		
ISL91211AIKZ/BKIZ		
Size	Document Number	Rev
B	<Doc>	A
Date:	Friday, January 24, 2020	Sheet 3 of 7

# ISL80030 SINGLE OUTPUT FOR VCCIO 3.3V



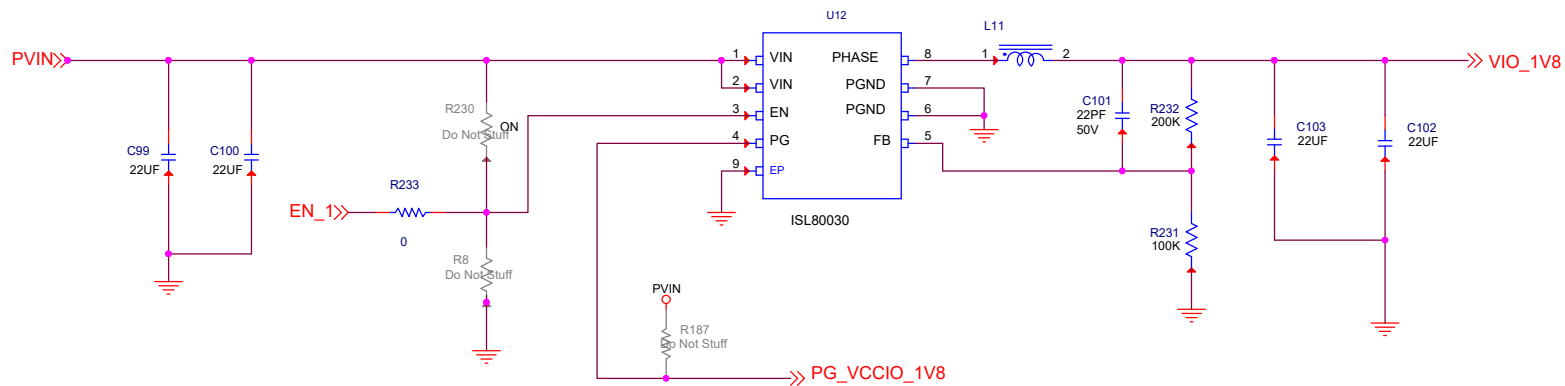
Title			<b>ISL80030-SINGLE-3.3V</b>		
Size	Document Number				Rev
B	<Doc>				<b>A</b>
Date:	Friday, January 24, 2020		Sheet	4	of 7

# ISL80030 SINGLE OUTPUT FOR VCCIO 2.5V



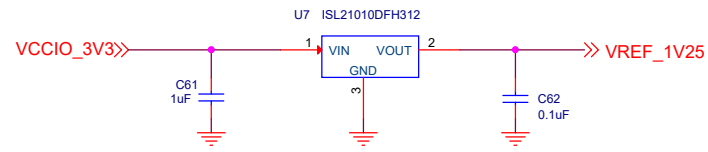
Title			<b>ISL80030-SINGLE-2.5V</b>		
Size	Document Number		<Doc>		Rev
B					<b>A</b>
Date:	Friday, January 24, 2020		Sheet	5	of 7

### ISL80030 SINGLE OUTPUT FOR VCCIO 1.8V

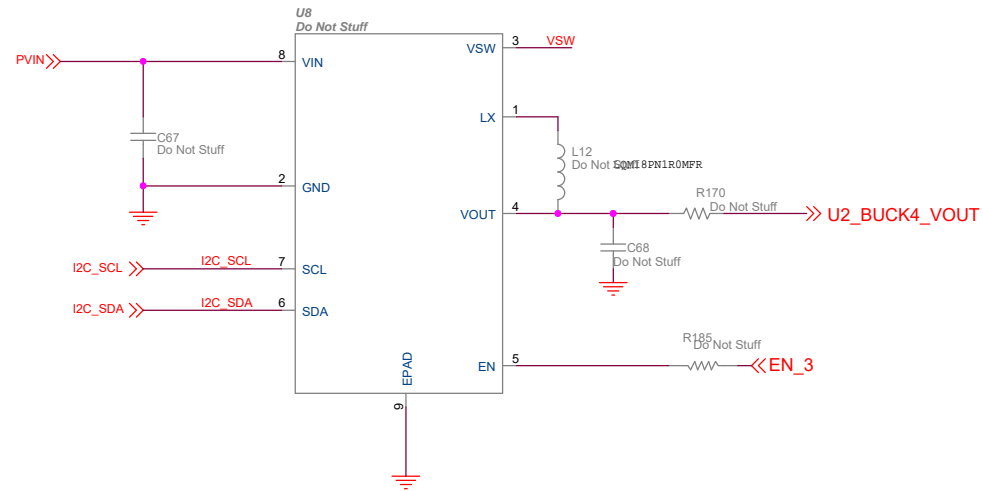


Title				
<b>ISL80030-SINGLE-1.8V</b>				
Size B	Document Number <Doc>			Rev <b>A</b>
Date:	Friday, January 24, 2020	Sheet	6	of 7

### ISL21010DFH312 for 1.25V reference to FPGA ADC



### ISL9123IRN for VTT\_REF - FPWM



Title		
ISL21010DFH312		
Size	Document Number	Rev
B	<Doc>	A
Date:	Friday, January 24, 2020	Sheet 7 of 7