

RX23T CPU Card User's Manual

R20UT3698EJ0130

Rev.1.30

User's Manual

Feb. 13, 2019

For Your Safety




Do not fail to read this manual before using the RX23T CPU card (RTK0EM0003C01202BJ) (the product).

- Follow the indications in this manual when using the product.
- Keep this manual near the product so you can refer to it whenever necessary.
- Transfer or sale of the product to third parties is prohibited without written approval.
- The product does not meet the legal requirements for general product safety (including EMC requirements) for equipment as stipulated by various countries and regions. The purchaser or importer of the product is responsible for ensuring compliance with local regulations. In addition, the customer is responsible for ensuring that the product is handled correctly and safely, in accordance with the laws of the customer's country (region).
- All information contained in this manual represents information on products at the time of publication of this manual. Please note that the product data, specification, sales offices, contents of website, address, etc., are subject to change by Renesas Electronics Corporation without notice due to product improvements or other reasons. Please confirm the latest information on Renesas Electronics website.
- The manual for the product, and specification (the documents) are the tool that was developed for the function and performance evaluation of Renesas Electronics semiconductor device (Renesas Electronics device) mounted on the product, and not guarantee the same quality, function and performance.
- By purchasing the product or downloading the documents from Renesas Electronics website, the support services provided from Renesas Electronics is not guaranteed.

Meaning of Notations

In this manual items related to the safe use of the product are indicated as described below.

The degree of injury to persons or damage to property that could result if the designated content in this manual is not followed is indicated as follows.

 Danger	Indicates content that, if not followed, could result in death or serious injury* ¹ to the user, and which is highly urgent.
 Warning	Indicates content that, if not followed, could result in death or serious injury to the user.
 Caution	Indicates content that, if not followed, could result in injury* ² to persons or physical damage.* ³

Note 1. Serious injury refers to conditions resulting in persistent after-effects and for which treatment would necessitate hospitalization or regular hospital visits, such as loss or impairment of eyesight, burns (high- or low-temperature), electric shock, bone fracture, or poisoning.

Note 2. Injury refers to conditions for which treatment would necessitate hospitalization or regular hospital visits.

Note 3. Physical damage refers to damage affecting the wider surroundings, such as the user's home or property.

Requirements related to the handling of the product are classified into the following categories.



- Marks indicating that an action is prohibited.

	<p>General Prohibition The indicated action is prohibited.</p>		<p>Example: Do Not Touch! Touching the specified location could result in injury.</p>
---	---	---	--

- Marks indicating that an action is prohibited.






	<p>General Caution Indicates a general need for caution that is not specified.</p>		<p>Example: Caution – Hot! Indicates the possibility of injury due to high temperature.</p>
---	---	---	--

- Marks directing that the specified action is required.







	<p>General Instruction The specified action is required.</p>		<p>Example: Turn Off (Disconnect) Power Supply! Instructs the user to turn off (disconnect) the power supply to the product.</p>
---	---	---	---

Warnings Regarding Use of the Product





■ Danger Items

 Danger	
  	<ul style="list-style-type: none"> • The product should be used only by persons (users) having a thorough knowledge of electrical and mechanical components and systems, a full knowledge of the risks associated with handling them, and training in inverter motor control and handling motors, or equivalent skills. Users should be limited to persons who have carefully read the Caution Items contained in this manual. • Unlike typical equipment, the product has no protective case to ensure safety, and it contains moving parts and high-temperature components that could be dangerous. Do not touch the evaluation board or cables while power is being supplied. • Carefully check to make sure that there are no pieces of conductive materials or dust adhering to the board, connectors, and cables. • There are moving parts, driven by a motor. Do not touch the motor while power is being supplied. • Ensure that the motor is insulated and placed in a stable location before supplying power.
	<p>Do Not Connect Load to Motor!</p> <ul style="list-style-type: none"> • This could cause fire, burns, or injury.

■ Warning Items

 Warning	
	<p>Caution – Rotating Parts!</p> <ul style="list-style-type: none"> The system includes a motor. Touching the rotating shaft could cause high-temperature burns or injury.
	<p>Always insert plugs, connectors, and cables securely, and confirm that they are fully inserted.</p> <ul style="list-style-type: none"> Incomplete connections could cause fire, burns, electric shock, or injury.
	<p>Use the power supply apparatus specified in the manual.</p> <ul style="list-style-type: none"> Failure to do so could cause fire, burns, electric shock, injury, or malfunction.
	<p>Disconnect the power supply and unplug all cables when the system will not be used for a period of time or when moving the system.</p> <ul style="list-style-type: none"> Failure to do so could cause fire, burns, electric shock, or malfunction. This will protect the system against damage due to lightning.
	<p>Use a mechanism (switch, outlet, etc.) located within reach to turn off (disconnect) the power supply.</p> <ul style="list-style-type: none"> In case of emergency, it may be necessary to cut off the power supply quickly.
	<p>Turn off the power supply immediately if you notice abnormal odor, smoke, abnormal sound, or overheating.</p> <ul style="list-style-type: none"> Continuing to use the system in an abnormal condition could cause fire, burns, or electric shock.
	<p>Do Not Disassemble, Modify, or Repair!</p> <ul style="list-style-type: none"> Doing so could cause fire, burns, electric shock, injury, or malfunction.
	<p>Do not use the product for any purpose other than initial evaluation of motor control in a testing room or lab. Do not integrate the product or any part of it into other equipment. Do not insert or remove cables or connectors when the product is powered on.</p> <ul style="list-style-type: none"> The product has no safety case. Failure to observe the above could cause fire, electric shock, burns, or malfunction. The product may not perform as expected if used for other than its intended purpose.

■ Caution Items

 Caution	
	<p>Caution – Hot!</p> <ul style="list-style-type: none"> The motor gets hot. Touching it could cause high-temperature burns.
	<p>Follow the procedure specified in the manual when powering the system on or off.</p> <ul style="list-style-type: none"> Failure to do so could cause overheating or malfunction.
	<p>Caution – Static Electricity</p> <ul style="list-style-type: none"> Use the antistatic band. Failure to do so could cause malfunction or unstable motion.

Overview

The RX23T CPU card (RTK0EM0003C01202BJ) is a board of the same specification as a RX23T CPU card (RTK0EM0013C01201BJ) (RX23T-CRD) that included with the 24V Motor Control Evaluation System for RX23T (RTK0EM0006S01212BJ) (Motor RSSK). An E1 emulator and equipment related to the Motor RSSK must be provided by the customer.

This user's manual describes the proper handling of the product. Content related to the product is presented in chapters 1 to 4 and 6 to 8. Content related to connection of the INV-BRD supplied with the Motor RSSK is presented in chapter 5. For details of the operation of the INV-BRD, refer to the Motor RSSK user's manual (R20UT3697EJ).

Target Device

RX23T microcontroller

Related Documents

- Schematic : R12TU0007EJ
- BOM List : R12TU0008EJ
- PWB Pattern Drawing : R12TU0006EJ
- Motor RSSK User's Manual : R20UT3697EJ

Package Contents

Refer to "RX23T CPU Card Information" included with this document.

Abbreviations

Abbreviations	Full Name	Remarks
Motor RSSK	24V Motor Control Evaluation System for RX23T	Motor control evaluation kit for RX23T Product No.: RTK0EM0006S01212BJ
INV-BRD	24V Inverter Board	Inverter board supplied with motor control evaluation kit for RX23T Product No.: RTK0EM0001B00012BJ

Contents

1. Features	6
2. Specifications	7
2.1 Specification	7
2.2 Regulatory Compliance Notices	8
2.2.1 European Union regulatory notices	8
3. Block Diagram	9
4. Layout	10
5. Usage	11
5.1 Quick Start	11
5.2 Operation	11
5.2.1 Basic Operation.....	11
5.2.2 Canceling an Error State	11
5.3 In Case of Abnormal Odor, Smoke, Abnormal Sound, Overheating, Etc.....	12
6. Functions	13
6.1 Power Supply.....	13
6.2 Connecting the E1 Emulator	13
6.3 Connecting the Inverter Board	14
6.4 Connecting the SCI	15
6.5 Hall Sensor Signal Input.....	15
6.6 Encoder Signal Input	16
6.7 Extension of Unused Pins.....	17
6.8 Reset Circuit	17
6.9 Crystal Resonator	17
6.10 LEDs	18
7. Details of RX23T CPU Card.....	19
7.1 RX23T Features	19
7.2 RX23T Pin Assignments.....	20
7.3 List of RX23T Pin Functions	22
8. Caution Items.....	23

1. Features

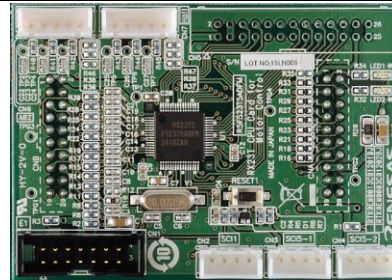
1. Populated with RX23T 32-bit microcontroller suitable for inverter control.
2. CPU card designed specifically for use with INV-BRD supplied with Motor RSK.
3. Supports writing of software to flash memory using the E1 emulator.
4. Equipped with Hall sensor input connector and encoder input connector.
5. Equipped with SCI connector.

2. Specifications

2.1 Specification

Table 2.1 Overview of RX23T CPU Card Specifications

Item	Specification
Product name	RX23T CPU card
Board product No.	RTK0EM0003C01202BJ
Supported inverter board / product No.	Supplied with 24V Motor Control Evaluation System for RX23T 24V Inverter Board / RTK0EM0001B00012BJ
Exterior view	



Note: Appearance of actual product may differ from photo.

MCU	Product group	RX23T group
	Product No.	R5F523T5ADFM
	CPU max. operating frequency	40 MHz
	Bit count	32 bits
	Package / Pin count	LFQFP / 64 pins
	ROM	128 KB
	RAM	12 KB
MCU input clock	Crystal resonator 10 MHz	
Input power supply voltage	DC 5 V Selectable among the following:	
	<ul style="list-style-type: none"> • Power supply from supported inverter board • Power supply from E1*1 	
Supported sensors	Hall sensor, encoder (through holes provided for signal monitoring test pins)	
Supported emulator	E1 emulator	
Connectors	<ul style="list-style-type: none"> • Inverter board connectors × 2 • SCI connectors × 3 • E1 connector • Hall sensor signal input connector • Encoder signal input connector 	
Switch	MCU external reset switch	
LEDs	User control LEDs × 2	
Operating temperature	Room temperature	
Operating humidity	No condensation	

Note 1. Power supply from the E1 emulator is only supported for standalone operation. Power supply from the E1 emulator is not supported when the INV-BRD is connected.

2.2 Regulatory Compliance Notices

2.2.1 European Union regulatory notices

This product complies with the following EU Directives. (These directives are only valid in the European Union.)

CE Certifications:

- Electromagnetic Compatibility (EMC) Directive 2014/30/EU
EN61326-1 : 2013 Class A

WARNING: This is a Class A product. This equipment can cause radio frequency noise when used in the residential area. In such cases, the user/operator of the equipment may be required to take appropriate countermeasures under his responsibility.

- Information for traceability
 - Authorised representative
Name: Renesas Electronics Corporation
Address: Toyosu Foresia, 3-2-24, Toyosu, Koto-ku, Tokyo 135-0061, Japan
 - Manufacturer
Name: Renesas Electronics Corporation
Address: Toyosu Foresia, 3-2-24, Toyosu, Koto-ku, Tokyo 135-0061, Japan
 - Person responsible for placing on the market
Name: Renesas Electronics Europe GmbH
Address: Arcadiastrasse 10, 40472 Dusseldorf, Germany
 - Trademark and Type name
Trademark: Renesas
Product name: RX24T CPU Card for Motor Control
Type name: RTK0EM0009C03402BJ

Environmental Compliance and Certifications:

- Waste Electrical and Electronic Equipment (WEEE) Directive 2012/19/EU

3. Block Diagram

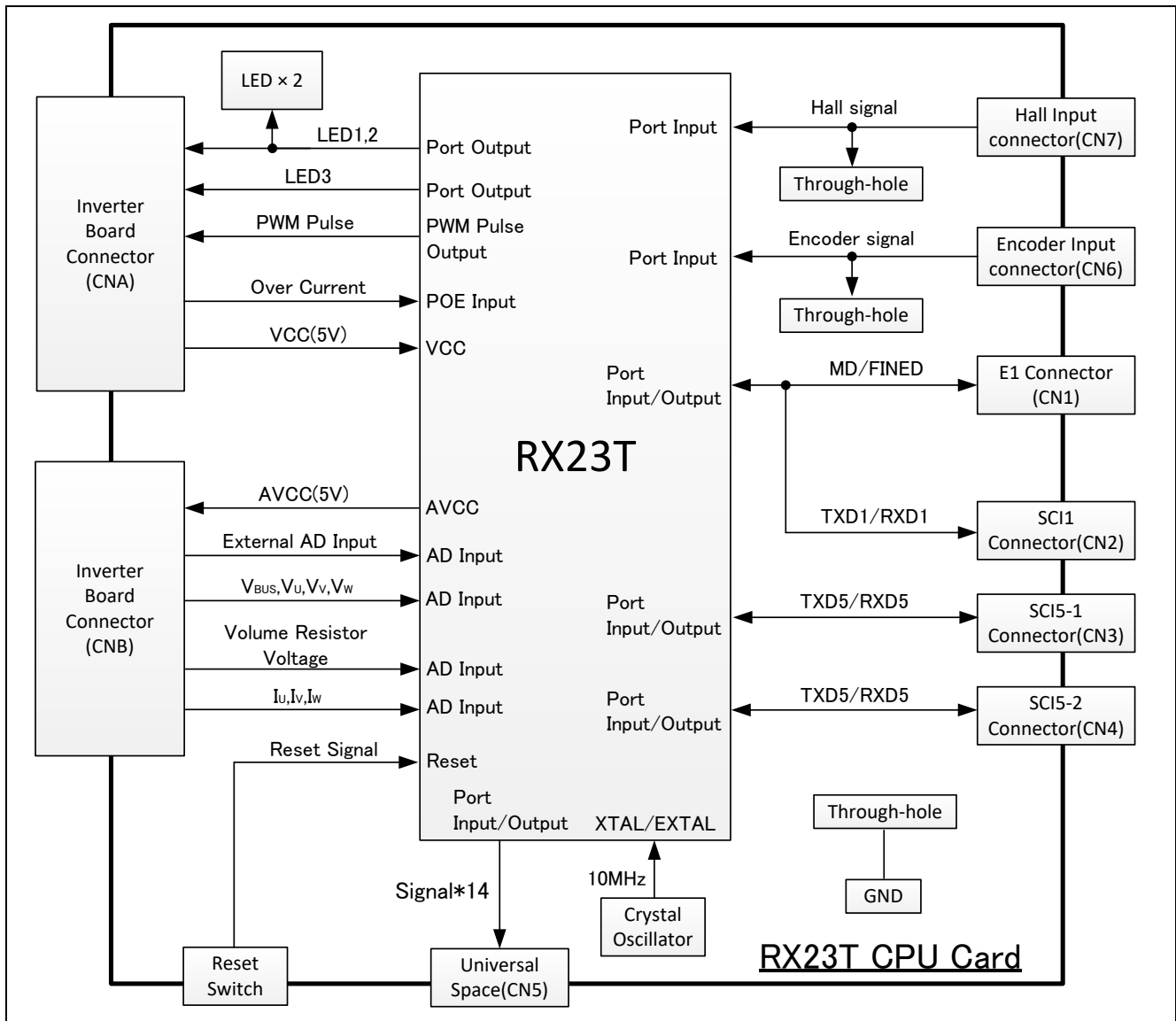


Figure 3.1 RX23T CPU Card Block Diagram

4. Layout

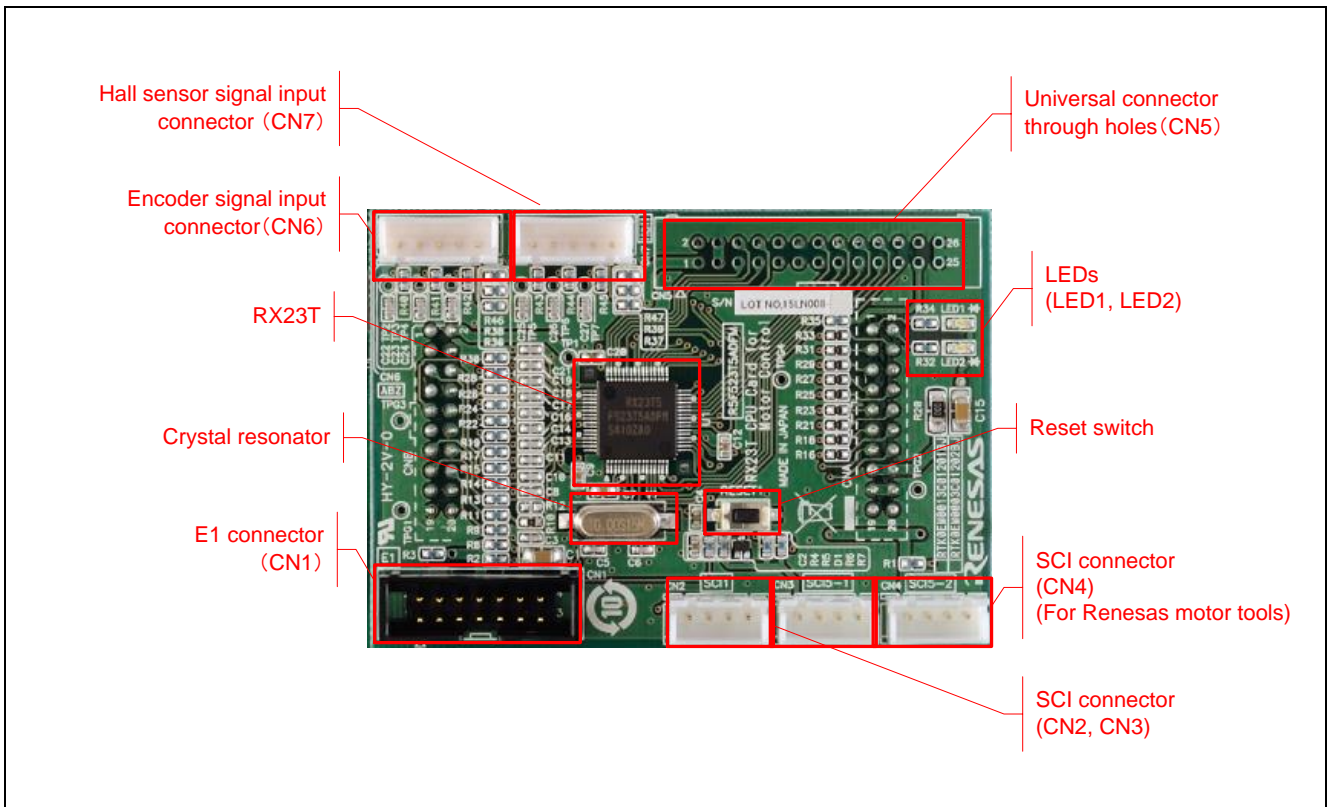


Figure 4.1 RX23T CPU Card Layout (Top View)

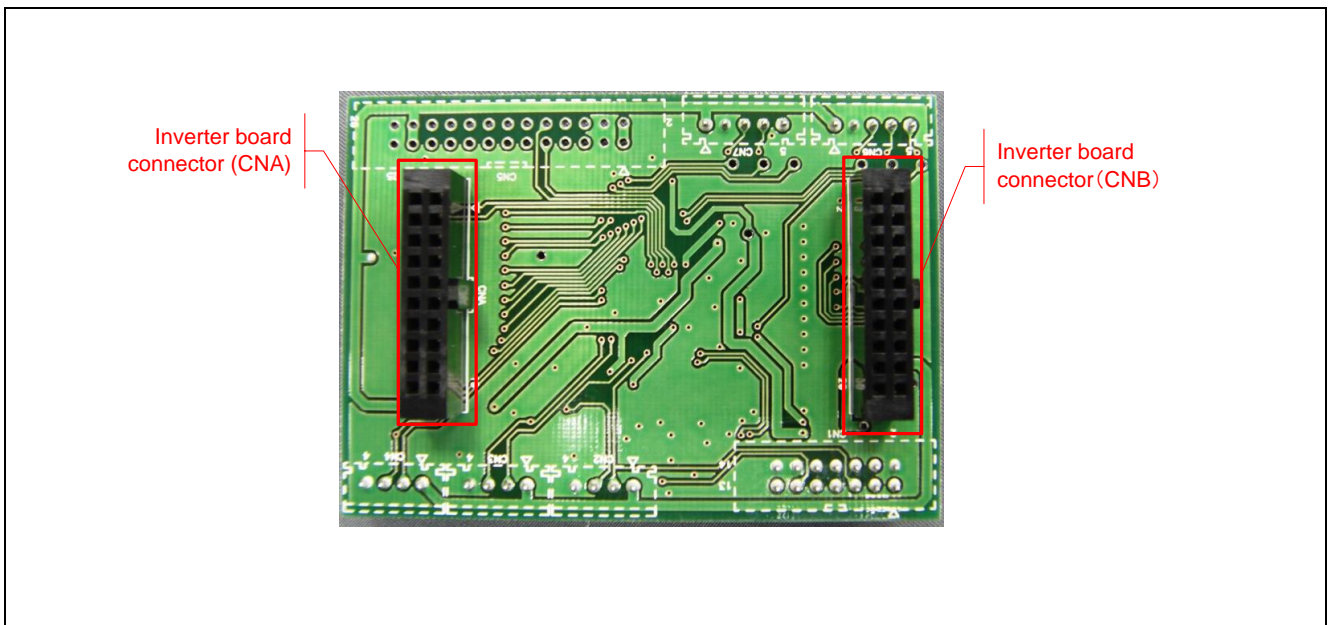


Figure 4.2 RX23T CPU Card Layout (Bottom View)

5. Usage

5.1 Quick Start

Obtain the Motor RSK, and perform the steps described in section 5.1, Quick Start, of the user's manual (R20UT3697EJ).

5.2 Operation

5.2.1 Basic Operation

Out of the box the product is programmed with sensor-less vector control software for the RX23T. Table 5.1 lists the software specifications and the basic operations when connected to the Motor RSK.

Table 5.1 Initial Software Specifications

Item	Specification
Control method	Sensor-less vector control
VR1	Clockwise turn: Motor shaft rotates clockwise. Counterclockwise turn: Motor shaft rotates counterclockwise.
SW1	ON: Motor rotation enabled OFF: Motor rotation disabled
SW2	Cancels error state: OFF → ON → OFF after an error:
LED1	ON: SW1 ON and normal state. OFF: SW1 OFF or error state.
LED2	ON: error state. OFF: normal state.

5.2.2 Canceling an Error State

If an error occurs, LED2 lights on the INV-BRD and the product, and motor rotation stops. To recover, it is necessary to turn off toggle switch SW1 and turn on toggle switch SW2 on the INV-BRD, and then turn off toggle switch SW2 again.

5.3 In Case of Abnormal Odor, Smoke, Abnormal Sound, Overheating, Etc.

The INV-BRD is equipped with a toggle switch (S1) to cut off the flow of current to the inverter. If an abnormal condition (such as abnormal odor, smoke, abnormal sound, or overheating) occurs, turn off S1 to cut off current flow to the inverter.

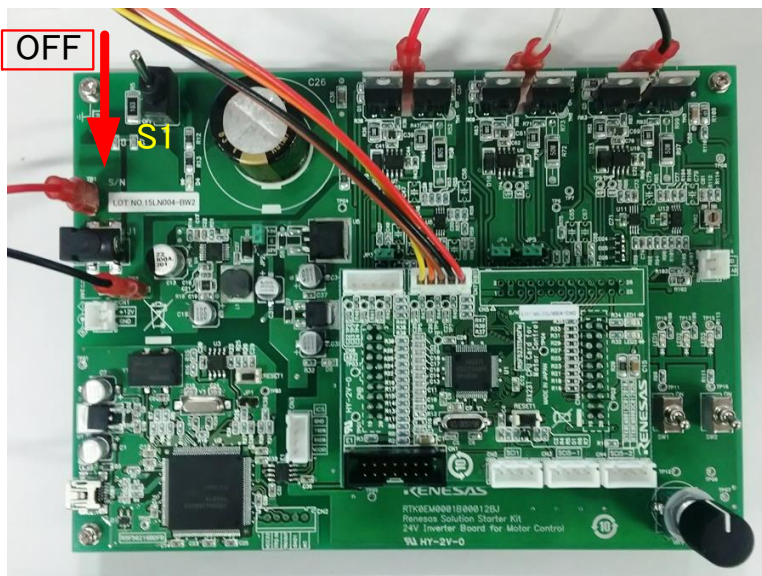


Figure 5.1 Cut off current

6. Functions

6.1 Power Supply

The product does not have a dedicated power supply connector. When connected to the INV-BRD it draws power via the connector. When not connected to the INV-BRD, it can draw power via the E1 connector. The product is not allowed to draw power via the E1 connector when it is connected to the INV-BRD.

6.2 Connecting the E1 Emulator

The E1 on-chip debugging emulator from Renesas Electronics is used to write software (program) to the flash memory of the RX23T. Software will be downloaded into the product via E1 emulator. It is also necessary to make the settings shown in Table 6.1 in the integrated development environment to enable the emulator to supply power to the product. Table 6.2 lists the pin assignments of the E1 connector.

Table 6.1 E1 Emulator Power Supply Settings

Connection to INV-BRD	Power Supply Setting
Connected	Power supply not allowed*1
Not connected	5 V power supply

Note 1. When connected to the INV-BRD, the product must draw power from the INV-BRD.

Table 6.2 Pin Assignments of E1 Connector (CN1)

Pin No.	Pin Function	RX23T Connection Pins	Pin No.	Pin Function	RX23T Connection Pins
1	NC	—	2	GND	VSS
3	NC	—	4	NC	—
5	TXD	PD3/TXD1	6	NC	—
7	MD/FINED	MD/FINED	8	VCC	VCC
9	NC	—	10	NC	—
11	RXD	PD5/RXD1	12	GND	VSS
13	RESET	RES#	14	GND	VSS

Note: See r20ut0399ej0801_e1e20_rx.pdf, a supplement to the E1/E20 emulator user's manual.

6.3 Connecting the Inverter Board

The product connects to the INV-BRD supplied with the Motor RSSK via the inverter board connectors (CNA and CNB). Table 6.3 and Table 6.4 list the pin assignments of the inverter board connectors.

Table 6.3 Pin Assignments of Inverter Board Connector (CNA)

Pin No.	Pin Function	RX23T Connection Pins	Pin No.	Pin Function	RX23T Connection Pins
1	LED1#	P00	2	LED2#	P01
3	LED3#	P31	4	NC	PB4
5	FO#	P70/POE0#	6	NC	—
7	WN	P76/MTIOC4D	8	VN	P75/MTIOC4C
9	UN	P74/MTIOC3D	10	WP	P73/MTIOC4B
11	VP	P72/MTIOC4A	12	UP	P71/MTIOC3B
13	SW1#	P91	14	SW2#	P92
15	5V	VCC	16	5V	VCC
17	GND	VSS	18	GND	VSS
19	3.3V	—	20	3.3V	—

Table 6.4 Pin Assignments of Inverter Board Connector (CNB)

Pin No.	Pin Function	RX23T Connection Pins	Pin No.	Pin Function	RX23T Connection Pins
1	AVCC	AVCC	2	AVCC	AVCC
3	NC	—	4	NC	—
5	IU	P40/AN000	6	IV	P41/AN001
7	IW	P42/AN002	8	VPN	P43/AN003
9	TEMP	P47/AN007	10	VU	P44/AN004
11	VV	P45/AN005	12	VW	P46/AN006
13	VAC	P11/AN016	14	IPFC	P10/AN017*1
15	VR	P10/AN017*1	16	NV	—
17	VCCIO	VCC	18	VCCIO	VCC
19	GND	VSS	20	GND	VSS

Note 1. P10/AN017: Selectable between IPFC and VR1 (default: VR1).

6.4 Connecting the SCI

The product communicates with the SCI via the SCI connectors. There are three SCI connectors: CN2, CN3, and CN4. Table 6.5 lists their pin assignments.

Table 6.5 Pin Assignments of SCI Connectors (CN2, CN3, CN4)

Connector No.	Pin No.	Pin Function	RX23T Connection Pins
CN2 SCI1*1	1	5V	VCC
	2	RX23T transmit side	PD3/TXD1
	3	RX23T receive side	PD5/RXD1
	4	GND	VSS
CN3 SCI5-1	1	5V	VCC
	2	RX23T transmit side	PB5/TXD5
	3	RX23T receive side	PB6/RXD5
	4	GND	VSS
CN4 SCI5-2	1	5V	VCC
	2	RX23T transmit side	PB2/TXD5
	3	RX23T receive side	PB1/RXD5
	4	GND	VSS

Note 1. The SCI1 TXD and RXD pins are also used by E1 Emulator, so it is not possible to use SCI1 when the product is connected to the E1 Emulator.

6.5 Hall Sensor Signal Input

The product is equipped with a Hall sensor signal input connector. Using this connector it is possible to input the Hall sensor signal from the motor supplied with the Motor RSSK directly to the product. The signal input to the product is pulled up to 5 V and passed through an RC filter before being input to the RX23T. Table 6.6 lists the pin assignments of the Hall sensor signal input connector, and Table 6.7 lists connector information.

Table 6.6 Pin Assignments of Hall Sensor Signal Input Connector (CN7)

Pin No.	Pin Function	RX23T Connection Pins
1	5V	VCC
2	GND	VSS
3	HU	P93/IRQ0
4	HV	P94/IRQ1
5	HW	PA2/IRQ4

Table 6.7 Hall Sensor Signal Input Connector Information

Part	Product No.	Manufacturer
Connector (CN7)	XHP-5	J.S.T. Mfg. Co. Ltd. (JST)

6.6 Encoder Signal Input

The product is equipped with an encoder signal input connector. This makes it possible to input the encoder signal to the RX23T. The signal input to the product is pulled up to 5 V and passed through an RC filter before being input to the RX23T. Table 6.8 lists the pin assignments of the signal input connector, and Table 6.9 lists connector information.

Table 6.8 Pin Assignments of Encoder Signal Input Connector (CN6)

Pin No.	Pin Function	RX23T Connection Pins
1	5V	VCC
2	GND	VSS
3	A-phase	P33/MTCLKA
4	B-phase	P32/MTCLKB
5	Z-phase	PA5

Table 6.9 Encoder Signal Input Connector Information

Part	Product No.	Manufacturer
Connector (CN6)	XHP-5	J.S.T. Mfg. Co. Ltd. (JST)

6.7 Extension of Unused Pins

To facilitate general use of the product, the unused pins of the RX23T are extended through universal connector through holes in the board. Table 6.10 lists the pin assignments of the universal connector through holes.

Table 6.10 Pin Assignments of Universal Connector Through Holes

Pin No.	RX23T Connection Pins	Pin No.	RX23T Connection Pins
1	AVCC	2	AVCC
3	GND	4	GND
5	P22	6	P23
7	P24	8	P30
9	PA4	10	P02
11	NC	12	NC
13	NC	14	PA3
15	PB0	16	PB3
17	PB7	18	PD4
19	PD6	20	PD7
21	PE2	22	NC
23	UVCC	24	UVCC
25	VSS	26	VSS

6.8 Reset Circuit

The product is equipped with a reset circuit for resetting the microcontroller at power-on reset and external reset. To apply an external reset to the microcontroller, press the pushbutton (RESET1).

6.9 Crystal Resonator

The microcontroller mounted on the product is connected to a 10 MHz crystal resonator.

6.10 LEDs

Two LEDs are mounted on the product for use in debugging programs and general system applications. Each turns on when the output on the corresponding port is low-level and turns off when the output is high-level. Table 6.11 lists the pin assignments corresponding to the LEDs.

Table 6.11 RX23T CPU Card LED Connection Pin Assignments

Corresponding RX23T Port		LED1	LED2
P00	High-level output	Off	—
	Low-level output	On	—
P01	High-level output	—	Off
	Low-level output	—	On

7. Details of RX23T CPU Card

7.1 RX23T Features

1. 32-bit microcontroller with RXv2 CPU core for motor control
2. On-chip 32-bit single-precision floating point unit (FPU)
3. Ability to output three-phase complementary PWM waveforms
4. Ability to set timer interrupt as A/D trigger
5. Three 12-bit A/D converter units with a total of 10 channels
6. Channel-dedicated sample and hold function
7. On-chip comparator
8. Timer output stop (Hi-Z) function
9. On-chip independent watchdog timer

7.2 RX23T Pin Assignments

48	1	P02/CTS1#/RTS1#/SS1#/ADST0/IRQ5	32	P91/SSLA3
47	2	P00/IRQ2	31	P92/TMC11/SSLA2
46	3	VCL	30	P93/MTIOC0B/TMRI1/SCK5/RSPCKA/IRQ0
45	4	P01/CACREF/IRQ4	29	P94/MTIOC0C/TMO1/MISOA/IRQ1
44	5	MD/FINED	28	PA2/MTIOC2B/CTS5#/RTS5#/SS5#/SSLA1/IRQ4
43	6	RES#	27	PA3/MTIOC2A/SSLA0
42	7	XTAL/P37	26	PB0/MTIOC0D/MOSIA
41	8	VSS	25	PB1/MTIOC0C/RXD5/SMISO5/SSCL5/SCL0/IRQ2
40	9	EXTAL/P36	24	PB2/MTIOC0B/ADSM0/TXD5/SMOSI5/SSDA5/SDA0
39	10	VCC	23	PB3/MTIOC0A/CACREF/SCK5/RSPCKA
38	11	PE2/POE10#/NMI	22	VSS
37	12	PD7/TMRI1/SSLA1	21	PB4/POE8#/IRQ3
36	13	PD6/TMO1/SSLA0/CTS1#/RTS1#/SS1#/ADST0/IRQ5	20	VCC
35	14	PD5/TMRI0/RXD1/SMISO1/SSCL1/IRQ3	19	PB5/TXD5/SMOSI5/SSDA5
34	15	PD4/TMC10/SCK1/IRQ2	18	PB6/RXD5/SMISO5/SSCL5/IRQ5
33	16	PD3/TMO0/TXD1/SMOSI1/SSDA1	17	PB7/SCK5

Figure 7.1 RX23T Pin Assignments (1/2)

			P22/MTIC5W/TMRI2/MISOA/COMP2/IRQ2	48	
			P23/MTIC5V/CACREF/TMO2/MOSIA/COMP1/IRQ4	47	
			P24/MTIC5U/TMC12/RSPCKA/COMP0/IRQ3	46	
			P30/MTIOC0B/MTCLKD/SSLA0	45	
			VSS	44	
			P31/MTIOC0A/MTCLKC/SSLA1	43	
			VCC	42	
			P32/MTIOC3C/MTCLKB/SSLA2	41	
			P33/MTIOC3A/MTCLKA/SSLA3	40	
			P70/POE0#/IRQ5	39	
			P71/MTIOC3B	38	
			P72/MTIOC4A	37	
			P73/MTIOC4B	36	
			P74/MTIOC3D	35	
			P75/MTIOC4C	34	
			P76/MTIOC4D	33	
				49	
	P47/AN007/CMPC12/CMPC22				32
	P46/AN006/CMPC02				31
	P45/AN005/CMPC21				30
	P44/AN004/CMPC11				29
	P43/AN003/CMPC01				28
	P42/AN002/CMPC20				27
	P41/AN001/CMPC10				26
	P40/AN000/CMPC00				25
	AVCC0				24
	VREFH0				23
	VREFL0				22
	AVSS0				21
	P11/MTIOC3A/MTCLKC/TMO3/IRQ1/AN016/CVREFC0				20
	P10/MTCLKD/TMRI3/IRQ0/AN017/CVREFC1				19
	PA5/MTIOC1A/TMC13/MISOA				18
	PA4/MTIOC1B/RSPCKA/ADTRG0#				17
		1			
		2			
		3			
		4			
		5			
		6			
		7			
		8			
		9			
		10			
		11			
		12			
		13			
		14			
		15			
		16			

Figure 7.2 RX23T Pin Assignments (2/2)

7.3 List of RX23T Pin Functions

Table 7.1 List of RX23T Pin Functions

Pin No.	RX23T Pin Functions	CPU Card Connection	INV-BRD Connection
1	P02/CTS1#/RTS1#/SS1#/ADST0/IRQ5	CN5-10pin	Not connected
2	P00/IRQ2	CNA-1pin	LED1 cathode
3	VCL	Capacitor connection	Not connected
4	P01/CACREF/IRQ4	CAN-2pin	LED2 cathode
5	MD/FINED	CN1-7pin	Not connected
6	RES#	reset	Not connected
7	XTAL/P37	Crystal resonator (10MHz)	Not connected
8	VSS	GND	GND
9	EXTAL/P36	Crystal resonator (10MHz)	Not connected
10	VCC	VCC	VCC
11	PE2/POE10#/NMI	Pull-up/ CN5-21pin	Not connected
12	PD7/TMRI1/SSLA1	CN5-20pin	Not connected
13	PD6/TMO1/SSLA0/CTS1#/RTS1#/SS1#/ADST0/IRQ5	CN5-19pin	Not connected
14	PD5/TMRI0/RXD1/SMISO1/SSCL1/IRQ3	CN2-3pin/ CN1-11pin	Not connected
15	PD4/TMCI0/SCK1/IRQ2	CN5-18pin	Not connected
16	PD3/TMO0/TXD1/SMOSI1/SSDA1	CN1-5pin/ CN2-2pin	Not connected
17	PB7/SCK5	CN5-17pin	Not connected
18	PB6/RXD5/SMISO5/SSCL5/IRQ5	CN3-3pin	Not connected
19	PB5/TXD5/SMOSI5/SSDA5	CN3-2pin	Not connected
20	VCC	VCC	VCC
21	PB4/POE8#/IRQ3	CNA-4pin	Not connected
22	VSS	VSS	VSS
23	PB3/MTIOC0A/CACREF/SCK5/RSPCKA	CN5-16pin	Not connected
24	PB2/MTIOC0B/ADSM0/TXD5/SMOSI5/SSDA5/SDA0	CN4-2pin	Not connected
25	PB1/MTIOC0C/RXD5/SMISO5/SSCL5/SCL0/IRQ2	CN4-3pin	Not connected
26	PB0/MTIOC0D/MOSIA	CN5-15pin	Not connected
27	PA3/MTIOC2A/SSLA0	CN5-14pin	Not connected
28	PA2/MTIOC2B/CTS5#/RTS5#/SS5#/SSLA1/IRQ4	CN7-5pin	Not connected
29	P94/MTIOC0C/TMO1/MISOA/IRQ1	CN7-4pin	Not connected
30	P93/MTIOC0B/TMRI1/SCK5/RSPCKA/IRQ0	CN7-3pin	Not connected
31	P92/TMCI1/SSLA2	CNA-14pin	Toggle switch (SW2)
32	P91/SSLA3	CNA-13pin	Toggle switch (SW1)
33	P76/MTIOC4D	CNA-7pin	W-phase PWM output
34	P75/MTIOC4C	CNA-8pin	V-phase PWM output
35	P74/MTIOC3D	CNA-9pin	U-phase PWM output
36	P73/MTIOC4B	CNA-10pin	W+phase PWM output

Pin No.	RX23T Pin Functions	CPU Card Connection	INV-BRD Connection
37	P72/MTIOC4A	CNA-11pin	V+phase PWM output
38	P71/MTIOC3B	CNA-12pin	U+phase PWM output
39	P70/POE0#/IRQ5	CNA-5pin	Overcurrent detection
40	P33/MTIOC3A/MTCLKA/SSLA3	CN6-3pin	Not connected
41	P32/MTIOC3C/MTCLKB/SSLA2	CN6-4pin	Not connected
42	VCC	VCC	VCC
43	P31/MTIOC0A/MTCLKC/SSLA1	CNA-3pin	LED3 cathode
44	VSS	GND	GND
45	P30/MTIOC0B/MTCLKD/SSLA0	CN5-8pin	Not connected
46	P24/MTIC5U/TMCI2/RSPCKA/COMP0/IRQ3	CN5-7pin	Not connected
47	P23/MTIC5V/CACREF/TMO2/MOSIA/COMP1/IRQ4	CN5-6pin	Not connected
48	P22/MTIC5W/TMRI2/MISOA/COMP2/IRQ2	CN5-5pin	Not connected
49	P47/AN007/CMPC12/CMPC22	CNB-9pin	External A/D input
50	P46/AN006/CMPC02	CNB-12pin	W-phase voltage detection
51	P45/AN005/CMPC21	CNB-11pin	V-phase voltage detection
52	P44/AN004/CMPC11	CNB-10pin	U-phase voltage detection
53	P43/AN003/CMPC01	CNB-8pin	Bus line voltage detection
54	P42/AN002/CMPC20	CNB-7pin	W-phase current detection
55	P41/AN001/CMPC10	CNB-6pin	V-phase current detection
56	P40/AN000/CMPC00	CNB-5pin	U-phase current detection
57	AVCC0	AVCC	AVCC
58	VREFH0	AVCC	AVCC
59	VREFL0	GND	GND
60	AVSS0	GND	GND
61	P11/MTIOC3A/MTCLKC/TMO3/IRQ1/AN016/CVREFC0	CNB-13pin	Not connected
62	P10/MTCLKD/TMRI3/IRQ0/AN017/CVREFC1	CNB-15pin	VR/switch voltage detection
63	PA5/MTIOC1A/TMCI3/MISOA	CN6-5pin	Not connected
64	PA4/MTIOC1B/RSPCKA/ADTRG0#	CN5-9pin	Not connected

8. Caution Items

Caution items related to use of the product are as follows.

The product includes some unused pins that have not been processed. For information on accurate pin processing, refer to the hardware manual of the microcontroller.

Website and Support

Renesas Electronics Website

<http://www.renesas.com/>

Inquiries

<http://www.renesas.com/contact/>

All trademarks and registered trademarks are the property of their respective owners.

Revision History

Rev.	Date	Description	
		Page	Summary
1.00	Mar. 31, 2016	—	First edition issued
1.10	Apr. 5, 2017	3	Add the item about cautions (Static Electricity)
		8	Add the information about CE Certification
1.20	Sep. 19, 2018	14	Correct Table 6.4
1.30	Feb. 13, 2019	14	Correct Table 6.4
		15	Correct Table 6.5
		22	Correct Table 7.1

Notice

1. Descriptions of circuits, software and other related information in this document are provided only to illustrate the operation of semiconductor products and application examples. You are fully responsible for the incorporation or any other use of the circuits, software, and information in the design of your product or system. Renesas Electronics disclaims any and all liability for any losses and damages incurred by you or third parties arising from the use of these circuits, software, or information.
2. Renesas Electronics hereby expressly disclaims any warranties against and liability for infringement or any other claims involving patents, copyrights, or other intellectual property rights of third parties, by or arising from the use of Renesas Electronics products or technical information described in this document, including but not limited to, the product data, drawings, charts, programs, algorithms, and application examples.
3. No license, express, implied or otherwise, is granted hereby under any patents, copyrights or other intellectual property rights of Renesas Electronics or others.
4. You shall not alter, modify, copy, or reverse engineer any Renesas Electronics product, whether in whole or in part. Renesas Electronics disclaims any and all liability for any losses or damages incurred by you or third parties arising from such alteration, modification, copying or reverse engineering.
5. Renesas Electronics products are classified according to the following two quality grades: "Standard" and "High Quality". The intended applications for each Renesas Electronics product depends on the product's quality grade, as indicated below.
"Standard": Computers; office equipment; communications equipment; test and measurement equipment; audio and visual equipment; home electronic appliances; machine tools; personal electronic equipment; industrial robots; etc.
"High Quality": Transportation equipment (automobiles, trains, ships, etc.); traffic control (traffic lights); large-scale communication equipment; key financial terminal systems; safety control equipment; etc.
Unless expressly designated as a high reliability product or a product for harsh environments in a Renesas Electronics data sheet or other Renesas Electronics document, Renesas Electronics products are not intended or authorized for use in products or systems that may pose a direct threat to human life or bodily injury (artificial life support devices or systems; surgical implantations; etc.), or may cause serious property damage (space system; undersea repeaters; nuclear power control systems; aircraft control systems; key plant systems; military equipment; etc.). Renesas Electronics disclaims any and all liability for any damages or losses incurred by you or any third parties arising from the use of any Renesas Electronics product that is inconsistent with any Renesas Electronics data sheet, user's manual or other Renesas Electronics document.
6. When using Renesas Electronics products, refer to the latest product information (data sheets, user's manuals, application notes, "General Notes for Handling and Using Semiconductor Devices" in the reliability handbook, etc.), and ensure that usage conditions are within the ranges specified by Renesas Electronics with respect to maximum ratings, operating power supply voltage range, heat dissipation characteristics, installation, etc. Renesas Electronics disclaims any and all liability for any malfunctions, failure or accident arising out of the use of Renesas Electronics products outside of such specified ranges.
7. Although Renesas Electronics endeavors to improve the quality and reliability of Renesas Electronics products, semiconductor products have specific characteristics, such as the occurrence of failure at a certain rate and malfunctions under certain use conditions. Unless designated as a high reliability product or a product for harsh environments in a Renesas Electronics data sheet or other Renesas Electronics document, Renesas Electronics products are not subject to radiation resistance design. You are responsible for implementing safety measures to guard against the possibility of bodily injury, injury or damage caused by fire, and/or danger to the public in the event of a failure or malfunction of Renesas Electronics products, such as safety design for hardware and software, including but not limited to redundancy, fire control and malfunction prevention, appropriate treatment for aging degradation or any other appropriate measures. Because the evaluation of microcomputer software alone is very difficult and impractical, you are responsible for evaluating the safety of the final products or systems manufactured by you.
8. Please contact a Renesas Electronics sales office for details as to environmental matters such as the environmental compatibility of each Renesas Electronics product. You are responsible for carefully and sufficiently investigating applicable laws and regulations that regulate the inclusion or use of controlled substances, including without limitation, the EU RoHS Directive, and using Renesas Electronics products in compliance with all these applicable laws and regulations. Renesas Electronics disclaims any and all liability for damages or losses occurring as a result of your noncompliance with applicable laws and regulations.
9. Renesas Electronics products and technologies shall not be used for or incorporated into any products or systems whose manufacture, use, or sale is prohibited under any applicable domestic or foreign laws or regulations. You shall comply with any applicable export control laws and regulations promulgated and administered by the governments of any countries asserting jurisdiction over the parties or transactions.
10. It is the responsibility of the buyer or distributor of Renesas Electronics products, or any other party who distributes, disposes of, or otherwise sells or transfers the product to a third party, to notify such third party in advance of the contents and conditions set forth in this document.
11. This document shall not be reprinted, reproduced or duplicated in any form, in whole or in part, without prior written consent of Renesas Electronics.
12. Please contact a Renesas Electronics sales office if you have any questions regarding the information contained in this document or Renesas Electronics products.
(Note 1) "Renesas Electronics" as used in this document means Renesas Electronics Corporation and also includes its directly or indirectly controlled subsidiaries.
(Note 2) "Renesas Electronics product(s)" means any product developed or manufactured by or for Renesas Electronics.

以下“注意事项”为从英语原稿翻译的中文译文，仅作为参考译文，英文版的“Notice”具有正式效力。

注意事项

1. 本文件中所记载的关于电路、软件和其他相关信息仅用于说明半导体产品的操作和应用实例。用户如在产品或系统设计中应用本文件中的电路、软件和相关信息或将此等内容用于其他目的时，请自行负责。对于用户或第三方因使用上述电路、软件或信息而遭受的任何损失和损害，瑞萨电子不承担任何责任。
2. 瑞萨电子在此明确声明，对于因使用瑞萨电子产品或本文件中所述技术信息（包括但不限于产品数据、图、表、程序、算法、应用实例）而造成的与第三方专利、版权或其他知识产权相关的侵权或任何其他索赔，瑞萨电子不作任何保证并不承担责任。
3. 本文件所记载的内容不应视为对瑞萨电子或其他人所有的专利、版权或其他知识产权作出任何明示、默示或其它方式的许可及授权。
4. 用户不得对瑞萨电子的任何产品进行全部或部分更改、修改、复制或反向工程。对于用户或第三方因上述更改、修改、复制或反向工程的行为而遭受的任何损失或损害，瑞萨电子不承担任何责任。
5. 瑞萨电子产品根据其质量等级分为两个等级：“标准等级”和“高质量等级”。每种瑞萨电子产品的预期用途均取决于产品的质量等级，如下所示：
标准等级：计算机、办公设备、通讯设备、测试和测量设备、视听设备、家用电器、机械工具、个人电子设备、工业机器人等。
高质量等级：运输设备（汽车、火车、轮船等）、交通控制系统（交通信号灯）、大型通讯设备、关键金融终端系统、安全控制设备等。
除非瑞萨电子产品数据表或其他瑞萨电子文档中明确指定为高可靠性产品或用于恶劣环境的产品，否则瑞萨电子产品不能用于、亦未授权用于可能对人类生命造成直接威胁的产品或系统及可能造成人身伤害的产品或系统（人工生命维持装置或系统、植入于体内的装置等）中，或者可能造成重大财产损失的产品或系统（太空系统、海底增音机、核能控制系统、飞机控制系统、关键装置系统、军用设备等）中。对于用户或任何第三方因使用不符合瑞萨电子产品数据表、使用说明书或其他瑞萨电子文档的瑞萨电子产品而遭受的任何损害或损失，瑞萨电子不承担任何责任。
6. 使用瑞萨电子产品时，请参阅最新产品信息（数据表、使用说明书、应用指南、可靠性手册中的“半导体元件处理和一般注意事项”等），并确保使用条件在瑞萨电子指定的最大额定值、电源工作电压范围、散热特性、安装条件等范围内使用。对于在上述指定范围之外使用瑞萨电子产品而产生的任何故障、失效或事故，瑞萨电子不承担任何责任。
7. 虽然瑞萨电子一直致力于提高瑞萨电子产品的质量和可靠性，但是，半导体产品有其自身的具体特性，如一定的故障发生率以及在某些使用条件下会发生故障等。除非瑞萨电子产品数据表或其他瑞萨电子文档中指定为高可靠性产品或用于恶劣环境的产品，否则瑞萨电子产品未进行防辐射设计。用户负责执行安全措施，以避免因瑞萨电子产品失效或发生故障而造成身体伤害、火灾导致伤害或损害和/或其他对公众构成危险事故。例如进行软硬件安全设计（包括但不限于冗余设计、防火控制以及故障预防等）、适当的老化处理或其他适当的措施等。由于对微机电软件单独进行评估非常困难且并不实际，所以请用户自行负责对最终产品或系统进行安全评估。
8. 关于环境保护方面的详细内容，例如每种瑞萨电子产品的环境兼容性等，请与瑞萨电子的营业部门联系。用户负责仔细并充分查阅对管制物质的使用或含量进行管理的所有适用法律法规（包括但不限于《欧盟RoHS指令》），并在使用瑞萨电子产品时遵守所有适用法律法规。对于因用户未遵守相应适用法律法规而导致的损害或损失，瑞萨电子不承担任何责任。
9. 不可将瑞萨电子产品和技术用于或者嵌入日本国内或海外相应的法律所禁止生产、使用及销售的任何产品或系统中。也不可将瑞萨电子产品或技术用于(1)与大规模杀伤性武器（例如核武器、化学武器、生物武器或运这些武器的导弹，包括无人机(UAV)的开发、设计、制造、使用、存储等相关的任何目的；(2)与常规武器的开发、设计、制造或使用相关的任何目的；(3)扰乱国际和平与安全的任何其他目的，并且不可向任何第三方销售、出口、租赁、转让、或让与瑞萨电子产品或技术，无论直接或间接知悉或者有理由知悉该第三方或任何其他方将从事上述活动。用户必须遵守对各方或交易行司法管辖权的任意国家和地区政府所公布和管理的任何适用出口管制法律法规。
10. 瑞萨电子产品的买方或分销商，或者分销、处置产品，或以其他方式向第三方出售或转让产品的任何其他方有责任事先向所述第三方通知本文件规定的内容和条件。
11. 在事先未得到瑞萨电子书面认可的情况下，不得以任何形式部分或全部再版、转载或复制本文件。
12. 如果对本文件所记载的信息或瑞萨电子产品有任何疑问，请向瑞萨电子的营业部门咨询。
(注1) 瑞萨电子：在本文件中指瑞萨电子株式会社及其控股子公司。
(注2) 瑞萨电子产品：指瑞萨电子开发或生产的任何产品。

(Rev.4.0-1 November 2017)



Renesas Electronics Corporation

<http://www.renesas.com>

SALES OFFICES

Refer to "<http://www.renesas.com/>" for the latest and detailed information.

Renesas Electronics Corporation

TOYOSU FORESIA, 3-2-24 Toyosu, Koto-ku, Tokyo 135-0061, Japan

Renesas Electronics America Inc.

1001 Murphy Ranch Road, Milpitas, CA 95035, U.S.A.
Tel: +1-408-432-8888, Fax: +1-408-434-5351

Renesas Electronics Canada Limited

9251 Yonge Street, Suite 8309 Richmond Hill, Ontario Canada L4C 9T3
Tel: +1-905-237-2004

Renesas Electronics Europe Limited

Dukes Meadow, Millboard Road, Bourne End, Buckinghamshire, SL8 5FH, U.K.
Tel: +44-1628-651-700

Renesas Electronics Europe GmbH

ArCADiasstrasse 10, 40472 Düsseldorf, Germany
Tel: +49-211-6503-0, Fax: +49-211-6503-1322

Renesas Electronics (China) Co., Ltd.

Room 1709 Quantum Plaza, No.27 ZhichunLu, Haidian District, Beijing, 100191 P. R. China
Tel: +86-10-8235-1155, Fax: +86-10-8235-7679

Renesas Electronics (Shanghai) Co., Ltd.

Unit 301, Tower A, Central Towers, 555 Langa Road, Putuo District, Shanghai, 200333 P. R. China
Tel: +86-21-2226-0898, Fax: +86-21-2226-0989

Renesas Electronics Hong Kong Limited

Unit 1601-1611, 16/F., Tower 2, Grand Century Place, 193 Prince Edward Road West, Mongkok, Kowloon, Hong Kong
Tel: +852-2265-6688, Fax: +852-2886-9022

Renesas Electronics Taiwan Co., Ltd.

13F, No. 363, Fu Shing North Road, Taipei 10543, Taiwan
Tel: +886-2-8175-9600, Fax: +886-2-8175-9670

Renesas Electronics Singapore Pte. Ltd.

80 Bendemeer Road, Unit #06-02 Hyflux Innovation Centre, Singapore 339949
Tel: +65-6213-0200, Fax: +65-6213-0300

Renesas Electronics Malaysia Sdn.Bhd.

Unit 1207, Block B, Menara Amcorp, Amcorp Trade Centre, No. 18, Jln Persiaran Barat, 46050 Petaling Jaya, Selangor Darul Ehsan, Malaysia
Tel: +60-3-7955-9390, Fax: +60-3-7955-9510

Renesas Electronics India Pvt. Ltd.

No.77C, 100 Feet Road, HAL 2nd Stage, Indiranagar, Bangalore 560 038, India
Tel: +91-80-67208700, Fax: +91-80-67208777

Renesas Electronics Korea Co., Ltd.

17F, KAMCO Yangjae Tower, 262, Gangnam-daero, Gangnam-gu, Seoul, 06265 Korea
Tel: +82-2-558-3737, Fax: +82-2-558-8338

© 2019 Renesas Electronics Corporation. All rights reserved.

Colophon 7.2