

To our customers,

---

## Old Company Name in Catalogs and Other Documents

---

On April 1<sup>st</sup>, 2010, NEC Electronics Corporation merged with Renesas Technology Corporation, and Renesas Electronics Corporation took over all the business of both companies. Therefore, although the old company name remains in this document, it is a valid Renesas Electronics document. We appreciate your understanding.

Renesas Electronics website: <http://www.renesas.com>

April 1<sup>st</sup>, 2010  
Renesas Electronics Corporation

Issued by: Renesas Electronics Corporation (<http://www.renesas.com>)

Send any inquiries to <http://www.renesas.com/inquiry>.

Note that the following URLs in this document are not available:

<http://www.necel.com/>

<http://www2.renesas.com/>

Please refer to the following instead:

Development Tools | <http://www.renesas.com/tools>

Download | [http://www.renesas.com/tool\\_download](http://www.renesas.com/tool_download)

For any inquiries or feedback, please contact your region.

<http://www.renesas.com/inquiry>

## Notice

1. All information included in this document is current as of the date this document is issued. Such information, however, is subject to change without any prior notice. Before purchasing or using any Renesas Electronics products listed herein, please confirm the latest product information with a Renesas Electronics sales office. Also, please pay regular and careful attention to additional and different information to be disclosed by Renesas Electronics such as that disclosed through our website.
2. Renesas Electronics does not assume any liability for infringement of patents, copyrights, or other intellectual property rights of third parties by or arising from the use of Renesas Electronics products or technical information described in this document. No license, express, implied or otherwise, is granted hereby under any patents, copyrights or other intellectual property rights of Renesas Electronics or others.
3. You should not alter, modify, copy, or otherwise misappropriate any Renesas Electronics product, whether in whole or in part.
4. Descriptions of circuits, software and other related information in this document are provided only to illustrate the operation of semiconductor products and application examples. You are fully responsible for the incorporation of these circuits, software, and information in the design of your equipment. Renesas Electronics assumes no responsibility for any losses incurred by you or third parties arising from the use of these circuits, software, or information.
5. When exporting the products or technology described in this document, you should comply with the applicable export control laws and regulations and follow the procedures required by such laws and regulations. You should not use Renesas Electronics products or the technology described in this document for any purpose relating to military applications or use by the military, including but not limited to the development of weapons of mass destruction. Renesas Electronics products and technology may not be used for or incorporated into any products or systems whose manufacture, use, or sale is prohibited under any applicable domestic or foreign laws or regulations.
6. Renesas Electronics has used reasonable care in preparing the information included in this document, but Renesas Electronics does not warrant that such information is error free. Renesas Electronics assumes no liability whatsoever for any damages incurred by you resulting from errors in or omissions from the information included herein.
7. Renesas Electronics products are classified according to the following three quality grades: “Standard”, “High Quality”, and “Specific”. The recommended applications for each Renesas Electronics product depends on the product’s quality grade, as indicated below. You must check the quality grade of each Renesas Electronics product before using it in a particular application. You may not use any Renesas Electronics product for any application categorized as “Specific” without the prior written consent of Renesas Electronics. Further, you may not use any Renesas Electronics product for any application for which it is not intended without the prior written consent of Renesas Electronics. Renesas Electronics shall not be in any way liable for any damages or losses incurred by you or third parties arising from the use of any Renesas Electronics product for an application categorized as “Specific” or for which the product is not intended where you have failed to obtain the prior written consent of Renesas Electronics. The quality grade of each Renesas Electronics product is “Standard” unless otherwise expressly specified in a Renesas Electronics data sheets or data books, etc.
  - “Standard”: Computers; office equipment; communications equipment; test and measurement equipment; audio and visual equipment; home electronic appliances; machine tools; personal electronic equipment; and industrial robots.
  - “High Quality”: Transportation equipment (automobiles, trains, ships, etc.); traffic control systems; anti-disaster systems; anti-crime systems; safety equipment; and medical equipment not specifically designed for life support.
  - “Specific”: Aircraft; aerospace equipment; submersible repeaters; nuclear reactor control systems; medical equipment or systems for life support (e.g. artificial life support devices or systems), surgical implantations, or healthcare intervention (e.g. excision, etc.), and any other applications or purposes that pose a direct threat to human life.
8. You should use the Renesas Electronics products described in this document within the range specified by Renesas Electronics, especially with respect to the maximum rating, operating supply voltage range, movement power voltage range, heat radiation characteristics, installation and other product characteristics. Renesas Electronics shall have no liability for malfunctions or damages arising out of the use of Renesas Electronics products beyond such specified ranges.
9. Although Renesas Electronics endeavors to improve the quality and reliability of its products, semiconductor products have specific characteristics such as the occurrence of failure at a certain rate and malfunctions under certain use conditions. Further, Renesas Electronics products are not subject to radiation resistance design. Please be sure to implement safety measures to guard them against the possibility of physical injury, and injury or damage caused by fire in the event of the failure of a Renesas Electronics product, such as safety design for hardware and software including but not limited to redundancy, fire control and malfunction prevention, appropriate treatment for aging degradation or any other appropriate measures. Because the evaluation of microcomputer software alone is very difficult, please evaluate the safety of the final products or system manufactured by you.
10. Please contact a Renesas Electronics sales office for details as to environmental matters such as the environmental compatibility of each Renesas Electronics product. Please use Renesas Electronics products in compliance with all applicable laws and regulations that regulate the inclusion or use of controlled substances, including without limitation, the EU RoHS Directive. Renesas Electronics assumes no liability for damages or losses occurring as a result of your noncompliance with applicable laws and regulations.
11. This document may not be reproduced or duplicated, in any form, in whole or in part, without prior written consent of Renesas Electronics.
12. Please contact a Renesas Electronics sales office if you have any questions regarding the information contained in this document or Renesas Electronics products, or if you have any other inquiries.

(Note 1) “Renesas Electronics” as used in this document means Renesas Electronics Corporation and also includes its majority-owned subsidiaries.

(Note 2) “Renesas Electronics product(s)” means any product developed or manufactured by or for Renesas Electronics.



## **User's Manual**

# **MINICUBE2 Diagnostic Tool**

## **MINICUBE<sup>®</sup> Utility**

---

**Target Development Tool**  
QB-MINI2

Document No. U18588EJ2V0UM00 (2nd edition)

Date Published October 2008 NS

© NEC Electronics Corporation 2007

Printed in Japan

[MEMO]

**MINICUBE** is a registered trademark of NEC Electronics Corporation in Japan and Germany.

**Windows** is either a registered trademark or a trademark of Microsoft Corporation in the United States and/or other countries.

The names of other companies and products are the registered trademarks or trademarks of their companies.

- The information in this document is current as of October, 2008. The information is subject to change without notice. For actual design-in, refer to the latest publications of NEC Electronics data sheets or data books, etc., for the most up-to-date specifications of NEC Electronics products. Not all products and/or types are available in every country. Please check with an NEC Electronics sales representative for availability and additional information.
- No part of this document may be copied or reproduced in any form or by any means without the prior written consent of NEC Electronics. NEC Electronics assumes no responsibility for any errors that may appear in this document.
- NEC Electronics does not assume any liability for infringement of patents, copyrights or other intellectual property rights of third parties by or arising from the use of NEC Electronics products listed in this document or any other liability arising from the use of such products. No license, express, implied or otherwise, is granted under any patents, copyrights or other intellectual property rights of NEC Electronics or others.
- Descriptions of circuits, software and other related information in this document are provided for illustrative purposes in semiconductor product operation and application examples. The incorporation of these circuits, software and information in the design of a customer's equipment shall be done under the full responsibility of the customer. NEC Electronics assumes no responsibility for any losses incurred by customers or third parties arising from the use of these circuits, software and information.
- While NEC Electronics endeavors to enhance the quality, reliability and safety of NEC Electronics products, customers agree and acknowledge that the possibility of defects thereof cannot be eliminated entirely. To minimize risks of damage to property or injury (including death) to persons arising from defects in NEC Electronics products, customers must incorporate sufficient safety measures in their design, such as redundancy, fire-containment and anti-failure features.
- NEC Electronics products are classified into the following three quality grades: "Standard", "Special" and "Specific".  
The "Specific" quality grade applies only to NEC Electronics products developed based on a customer-designated "quality assurance program" for a specific application. The recommended applications of an NEC Electronics product depend on its quality grade, as indicated below. Customers must check the quality grade of each NEC Electronics product before using it in a particular application.
  - "Standard": Computers, office equipment, communications equipment, test and measurement equipment, audio and visual equipment, home electronic appliances, machine tools, personal electronic equipment and industrial robots.
  - "Special": Transportation equipment (automobiles, trains, ships, etc.), traffic control systems, anti-disaster systems, anti-crime systems, safety equipment and medical equipment (not specifically designed for life support).
  - "Specific": Aircraft, aerospace equipment, submersible repeaters, nuclear reactor control systems, life support systems and medical equipment for life support, etc.

The quality grade of NEC Electronics products is "Standard" unless otherwise expressly specified in NEC Electronics data sheets or data books, etc. If customers wish to use NEC Electronics products in applications not intended by NEC Electronics, they must contact an NEC Electronics sales representative in advance to determine NEC Electronics' willingness to support a given application.

(Note)

- (1) "NEC Electronics" as used in this statement means NEC Electronics Corporation and also includes its majority-owned subsidiaries.
- (2) "NEC Electronics products" means any product developed or manufactured by or for NEC Electronics (as defined above).

## INTRODUCTION

**Target Readers** This manual is intended for users who use the MINICUBE2 diagnostic tool when designing and developing a system using an NEC Electronics on-chip flash memory microcontroller.

**Purpose** This manual is intended to give users an understanding of the basic specifications and correct use of the MINICUBE2 diagnostic tool.

**Organization** This manual includes the following sections.

- Overview
- Installation and startup
- Self-testing function
- Firmware download function
- Version indication
- Uninstallation

**How to Read This Manual** It is assumed that the readers of this manual have general knowledge of electricity, logic circuits, and microcontrollers. In the explanations of the operation of the applications, it is also assumed that the readers have sufficient knowledge of Windows<sup>TM</sup>. For the usage and terminology of Windows 98, Windows Me, Windows 2000, and Windows XP, refer to each Windows manual.

The mark <R> shows major revised points.

The revised points can be easily searched by copying an "<R>" in the PDF file and specifying it in the "Find what:" field.

To understand the overall operation of the MINICUBE2 diagnostic tool

→ Read this manual according to the **CONTENTS**.

<b>Conventions</b>	<b>Note:</b>	Footnote for item marked with <b>Note</b> in the text
	<b>Caution:</b>	Information requiring particular attention
	<b>Remark:</b>	Supplementary information
	Numeric representation:	Binary ... xxxx or xxxxB Decimal ... xxxx Hexadecimal ... xxxxH
	" ":	Indicates an arbitrary message or item on the screen.
	[ ]:	indicates the name of a button, command, dialog box, or area.

## Terminology

The meanings of the terms used in this manual are as follows.

Term	Meaning
MINICUBE2	Indicates QB-MINI2, an on-chip debug emulator with programming function
Debugger	Indicates NEC Electronics integrated debugger ID850QB, ID78K0-QB, ID78K0S-QB or ID78K0R-QB.
QBP	Indicates the QB-Programmer, GUI software used for flash programming.

## Related Documents

Please use the following documents in combination with this manual.

The related documents listed below may include preliminary versions. However, preliminary versions are not marked as such.

### O Documents Related to Development Tools (User's Manuals)

Document Name	Document Number
MINICUBE2 Diagnostic Tool	This manual
QB-MINI2 On-Chip Debug Emulator with Programming Function	U18371E
ID850QB Ver. 3.40 Integrated Debugger Operation	U18604E
ID78K0-QB Ver. 2.90 Integrated Debugger Operation	U17272E
ID78K0S-QB Ver. 2.90 Integrated Debugger Operation	U18247E
ID78K0R-QB Ver. 3.20 Integrated Debugger Operation	U17839E
QB-Programmer Programming GUI Operation	U18527E
MINICUBE OCD Checker	U18591E

**Caution** The related documents listed above are subject to change without notice.  
Be sure to use the latest version of each document for designing, etc.

## CONTENTS

<b>CHAPTER 1 OVERVIEW</b>	<b>7</b>
<b>1.1 MINICUBE2 Diagnostic Tool</b>	<b>7</b>
1.1.1 Self-testing function	7
1.1.2 Firmware download function	7
<b>1.2 System Configuration</b>	<b>7</b>
<b>CHAPTER 2 INSTALLATION AND STARTUP</b>	<b>8</b>
<b>2.1 When NEC Electronics Tool Is Used</b>	<b>8</b>
2.1.1 Installation	8
2.1.2 Startup	8
<b>2.2 When Tools Manufactured by Partner Companies (GHS and IAR) are Used</b>	<b>9</b>
2.2.1 Installation	9
2.2.2 Startup	9
<b>2.3 Explanation of Each Area</b>	<b>10</b>
<b>CHAPTER 3 SELF-TESTING FUNCTION</b>	<b>11</b>
<b>3.1 Explanation of Each Area</b>	<b>11</b>
<b>3.2 Cautions on Self-Testing</b>	<b>12</b>
<b>3.3 Execution of Self-Testing</b>	<b>12</b>
<b>3.4 Log File</b>	<b>16</b>
3.4.1 Specification of location for saving log file	16
3.4.2 Format of log file	17
<b>3.5 Action When NG Is Displayed</b>	<b>17</b>
3.5.1 Operation when NG is displayed	17
3.5.2 Action for error	19
<b>CHAPTER 4 FIRMWARE DOWNLOAD FUNCTION</b>	<b>21</b>
<b>4.1 Explanation of Each Area</b>	<b>21</b>
<b>4.2 Version Check Before Downloading Firmware</b>	<b>22</b>
<b>4.3 Preparation of Download File</b>	<b>22</b>
<b>4.4 Downloading Firmware</b>	<b>23</b>
<b>4.5 Version Check After Downloading Firmware</b>	<b>28</b>
<b>4.6 Failure in Firmware Download</b>	<b>29</b>
<b>CHAPTER 5 VERSION INDICATION</b>	<b>30</b>
<b>CHAPTER 6 UNINSTALLATION</b>	<b>31</b>
<b>APPENDIX A REVISION HISTORY</b>	<b>32</b>
<b>A.1 Major Revisions in This Edition</b>	<b>32</b>



## CHAPTER 1 OVERVIEW

### 1.1 MINICUBE2 Diagnostic Tool

The MINICUBE2 diagnostic tool is software used to perform self-testing of the QB-MINI2, an on-chip debug emulator with programming function (MINICUBE2), and update MINICUBE2 firmware.

Use the MINICUBE2 diagnostic tool mainly for MINICUBE2 self-testing. Note that MINICUBE2 may not operate normally if the firmware download function is used during ordinary operation.

#### 1.1.1 Self-testing function

The MINICUBE2 diagnostic tool tests the following items for abnormality in MINICUBE2.

- F/W version indication
- Voltage supplied via USB
- Internal  $V_{DD}$
- LED
- Power select switch
- Mode select switch
- Connection status of 78K0-OCD board
- Oscillator (only when 78K0-OCD board is connected)
- I/O ports

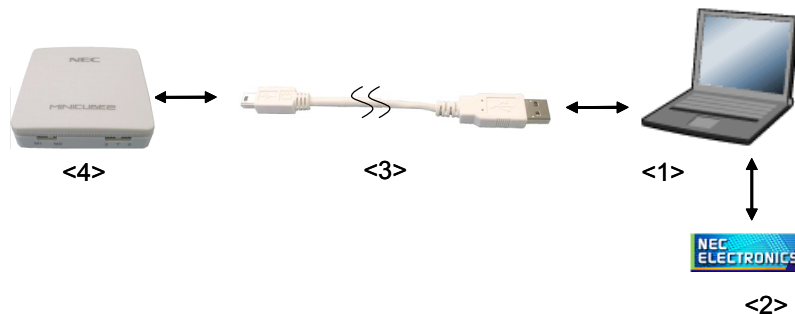
#### 1.1.2 Firmware download function

This function is used to update the firmware program (MINICUBE2 firmware) embedded into the on-chip flash memory of the control CPU in MINICUBE2.

**Caution** Do not use this function for any purpose other than updating firmware; otherwise, MINICUBE2 may be damaged.

### 1.2 System Configuration

The following figure illustrates the system configuration that includes MINICUBE2, for using the MINICUBE2 diagnostic tool.



<1> Host machine

Products with USB ports, which are compatible with the debugger and QBP

<2> Software

Includes the MINICUBE2 diagnostic tool, MINICUBE OCD Checker, debugger, and QBP.

<3> USB cable (accessory of MINICUBE2)

<4> MINICUBE2 (connection of the 78K0-OCD board can be checked by self-testing)

## CHAPTER 2 INSTALLATION AND STARTUP

This section explains how to install and start the MINICUBE2 diagnostic tool. Note that the procedure differs depending on the development tool used (Refer to **2.1 When NEC Electronics Tool Is Used** and **2.2 When Tools Manufactured by Partner Companies (GHS and IAR) are Used**).

### 2.1 When NEC Electronics Tool Is Used

#### 2.1.1 Installation

- <R>
- Select the “Emulator Utilities” check box when installing CubeSuite V1.00 or later; the MINICUBE2 diagnostic tool will then be installed automatically.
  - Select the “MINICUBE Utilities Vx.xx” check box when installing ID850QB V3.20 or later; the MINICUBE2 diagnostic tool will then be installed automatically.
  - Select the “MINICUBE Utilities Vx.xx” check box when installing ID78K0-QB V2.93 or later; the MINICUBE2 diagnostic tool will then be installed automatically.
  - Select the “MINICUBE Utilities Vx.xx” check box when installing ID78K0S-QB V2.82 or later; the MINICUBE2 diagnostic tool will then be installed automatically.
  - Select the “MINICUBE Utilities Vx.xx” check box when installing ID78K0R-QB V3.20 or later; the MINICUBE2 diagnostic tool will then be installed automatically.
  - Select the “MINICUBE Utilities Vx.xx” check box when installing QB-Programmer V1.00 or later; the MINICUBE2 diagnostic tool will then be installed automatically.

**Caution** If multiple debuggers are installed, “MINICUBE Utilities Vx.xx MINICUBE2 Diagnostic Tool” in the [Latest Version] folder is overwritten.

**Remark** The MINICUBE OCD Checker is installed when the MINICUBE2 diagnostic tool is installed.

#### <R> 2.1.2 Startup

Start the MINICUBE2 diagnostic tool using either of the following procedure.

- When using CubeSuite  
Click the Start menu of Windows, point to “Programs”, “NEC Electronics CubeSuite”, “Emulator Utilities”, “<Target Device>” and then click “MINICUBE2 Diagnostic Tool”.
- When using the ID850QB, ID78K0-QB, ID78K0S-QB, ID78K0R-QB, or QB-Programmer  
Click the Start menu of Windows, point to “Programs”, “NEC Electronics Tools”, “Latest Version”, and then click “MINICUBE Utilities Vx.xx MINICUBE2 Diagnostic Tool”.

**Caution** If the debugger, QBP, or MINICUBE OCD Checker is running, terminate it before starting the MINICUBE2 diagnostic tool.

## 2.2 When Tools Manufactured by Partner Companies (GHS and IAR) are Used

### 2.2.1 Installation

- Download MINICUBE Utilities (*MINICUBE\_Utilities\_Vxxx.lzh*) from one of the following websites.

<http://www.necel.com/micro/ghs/jpn/exec/execindex.html> (Japanese version)

<http://www.necel.com/micro/ghs/eng/exec/> (English version)

<1> Download *MINICUBE\_Utilities\_Vxxx.lzh* into an arbitrary folder from the website.

<2> Execute *MINICUBE\_Utilities\_Vxxx.lzh* in the arbitrary folder.

<3> The following folders and files will be created in the arbitrary folder.

```

MINICUBE_Utilities_Vxxx ── MINICUBE_Utilities_Vxxx
                        ── MINICUBE_Utilities_Document_Vxxx
                        ── readme_j.txt
                        ── readme_e.txt

```

<4> Install MINICUBE\_Utilities\_Vxxx main unit as follows.

- If the OS is Japanese Windows, execute *setup.exe* in the *MINICUBE\_Utilities\_Vxxx\Japanese\DISK1* folder and install the software according to the installer instructions.
- If the OS is not Japanese Windows, execute *setup.exe* in the *MINICUBE\_Utilities\_Vxxx\English\DISK1* folder and install the software according to the installer instructions.

**Caution** Specify **C:\Program Files\NEC Electronics Tools** as an installation destination folder.

**Remarks 1.** The MINICUBE2 diagnostic tool and MINICUBE OCD Checker can be installed by installing *MINICUBE Utilities Vxxx*.

- 2.** GHS: Green Hills Software, Inc  
IAR: IAR Systems AB

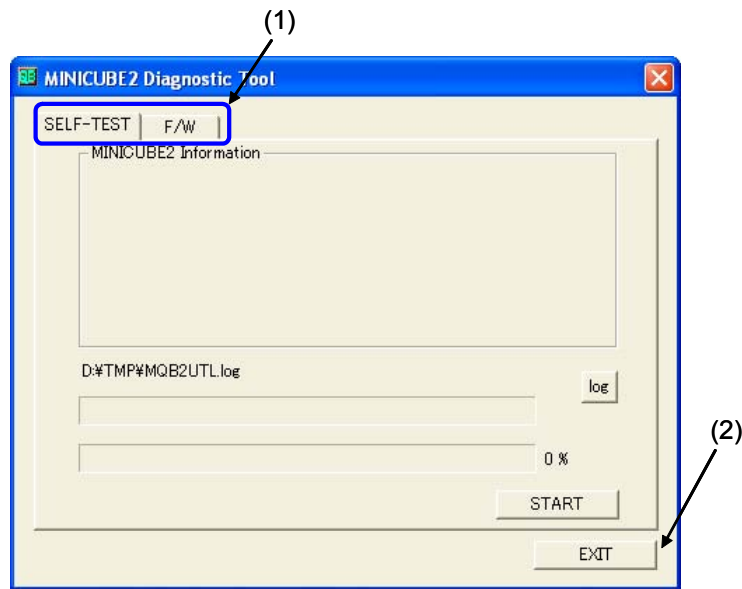
### 2.2.2 Startup

- Click the Start menu of Windows, point to “Programs”, “NEC Electronics Tools”, “Latest Version”, and then click “MINICUBE2 Utilities Vx.xx MINICUBE2 Diagnostic Tool”.

**Caution** If the debugger, QBP, or MINICUBE OCD Checker is running, terminate it before starting the MINICUBE2 diagnostic tool.

### 2.3 Explanation of Each Area

When the MINICUBE2 diagnostic tool is started, a window with two tabs for switching two functions is displayed.



**(1) [SELF-TEST] and [F/W] tabs**

The self-testing and firmware download functions can be switched.

**(2) [EXIT] button**

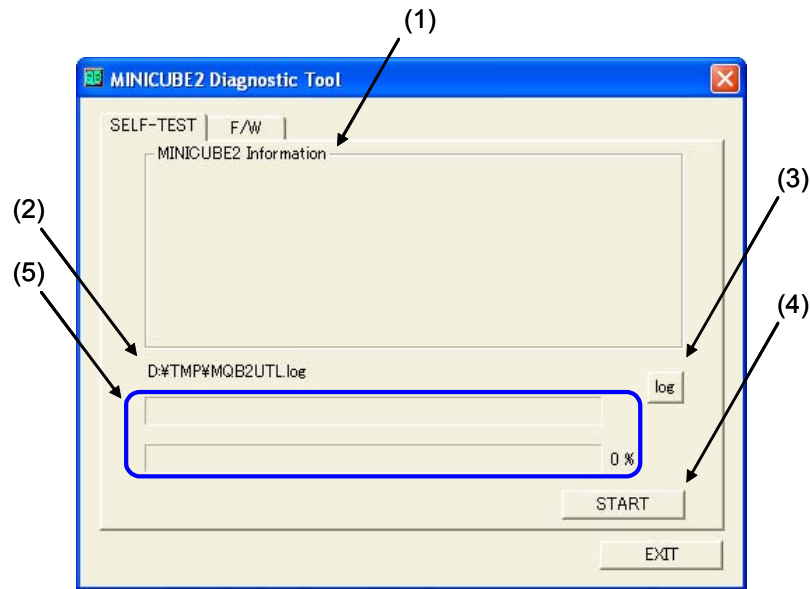
Terminates the MINICUBE2 diagnostic tool.

## CHAPTER 3 SELF-TESTING FUNCTION

This section explains how to perform self-testing of MINICUBE2.

### 3.1 Explanation of Each Area

The following window is displayed by clicking the [SELF-TEST] tab. Explanation of each area is described below.



**(1) MINICUBE2 Information window**

Displays MINICUBE2 hardware information and the firmware version.

**(2) Test status**

Displays the log file name until the path is changed or self-testing is performed. Displays the test items during self-testing. Displays the test result after self-testing is completed.

**(3) [log] button**

When this button is clicked, the path for the log file can be changed.

**(4) [START] button**

When this button is clicked, a confirmation dialog box appears and self-testing is started by clicking the [OK] button.

**(5) Progress bar**

The upper progress bar indicates the progress status of the test currently being performed. The lower progress bar indicates the status of progress for overall self-testing.

### 3.2 Cautions on Self-Testing

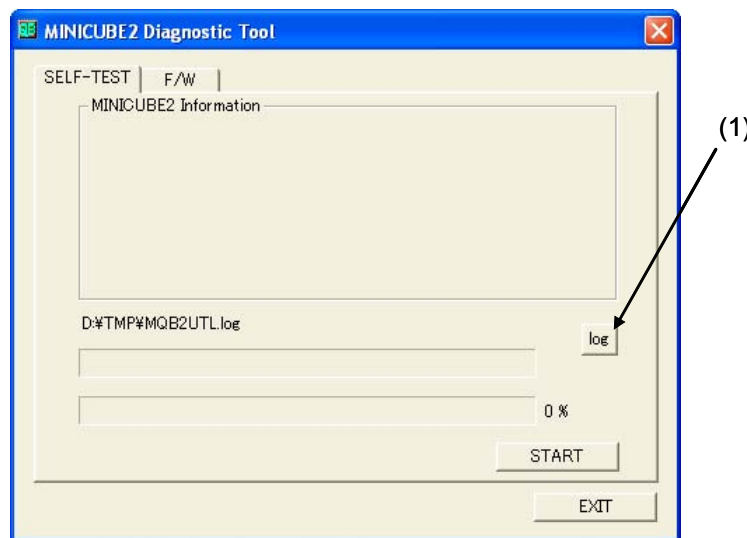
Note the following points when executing the self-testing function.

- Do not connect MINICUBE2 to the target system.
- Finish the MINICUBE2 switch setting before connecting MINICUBE2 to the host machine (power on).
  - Power select switch: This switch is set to “3” by default. Set this switch to “3” or “5”. Self-testing is aborted if this switch is set to “T”.
  - Mode select switch: This switch is set to “M2” by default. Self-testing is aborted if this switch is set to “M1” while the 78K0-OCD board is connected.
- Connection between MINICUBE2 and 78K0-OCD board
  - Set the mode select switch to “M2” if the 78K0-OCD board is connected. Self-testing is aborted if this switch is set to “M1”.
- Terminate the debugger, QBP and OCD Checker.

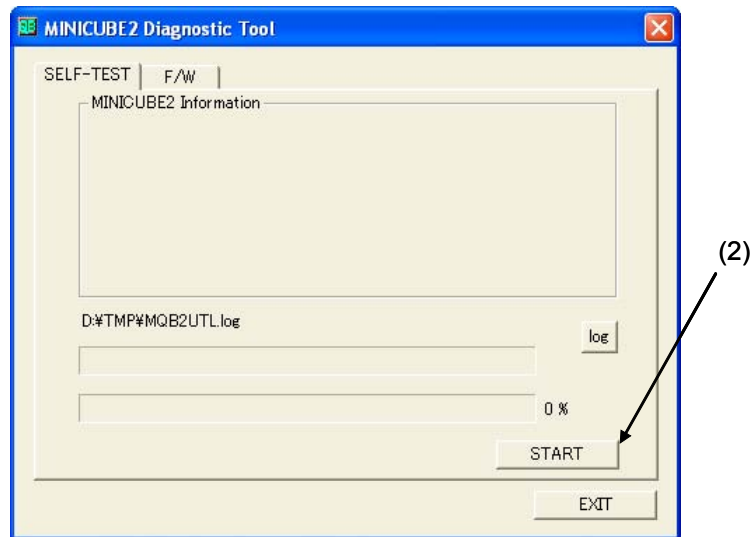
### 3.3 Execution of Self-Testing

Perform self-testing according to the following steps (1) to (9).

- (1) Specify the location in which the log file will be saved by clicking the [log] button. The self-testing result will be output to this log file. Refer to **3.4 Log File** for descriptions on the log file.

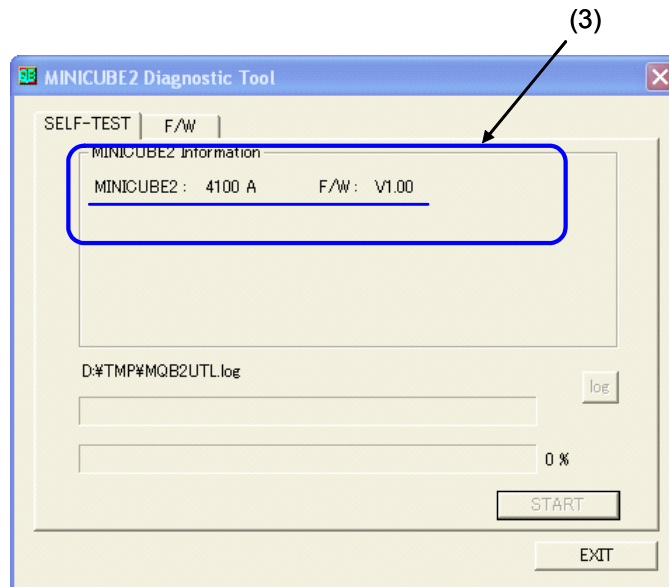


- (2) Click the [START] button.

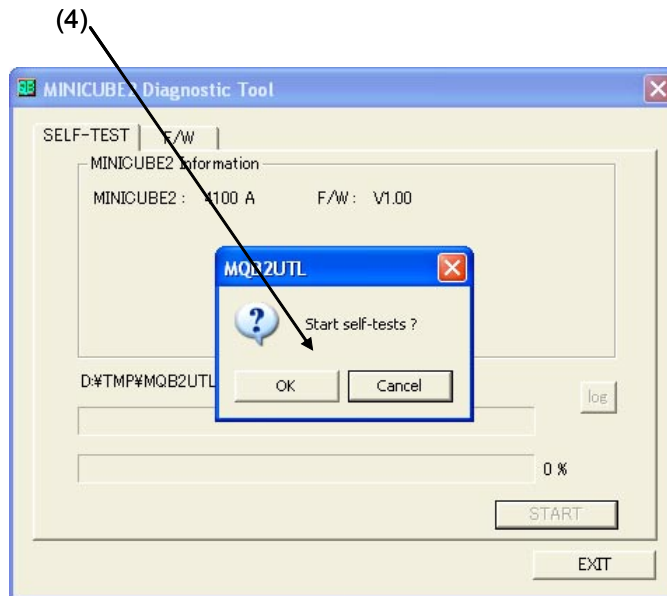


- (3) The MINICUBE2 connection status is checked and the hardware information is displayed in the MINICUBE2 Information window.

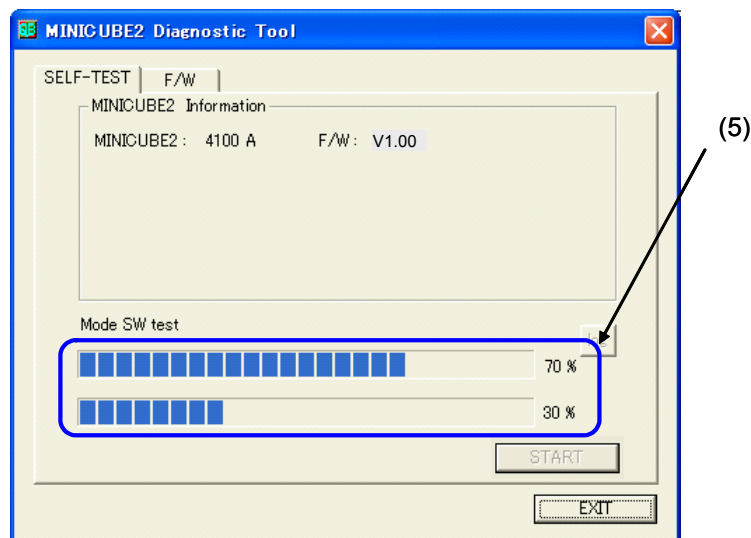
In the figure below, V1.00 described for “MINICUBE2 4100 A F/W” is the firmware version.



- (4) A dialog box to confirm whether to start self-testing appears. Self-testing is started by clicking the [OK] button. The log file is created (overwritten if the self-testing was performed before).

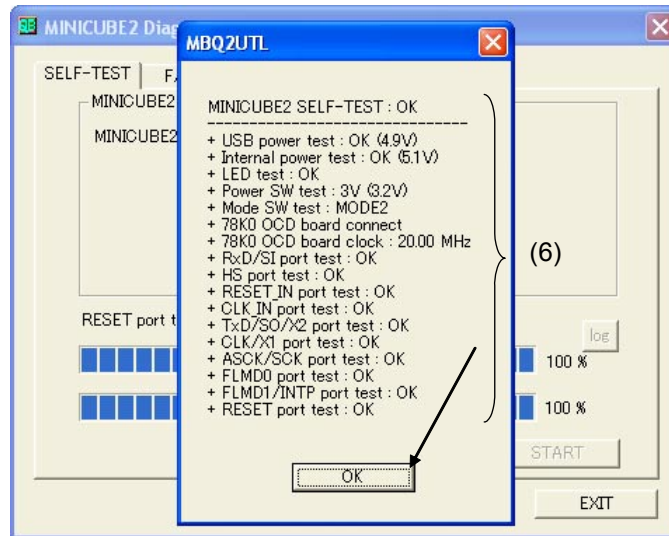


- (5) The upper progress bar indicates the progress status of the test currently being performed. The lower progress bar indicates the status of progress for overall self-testing.

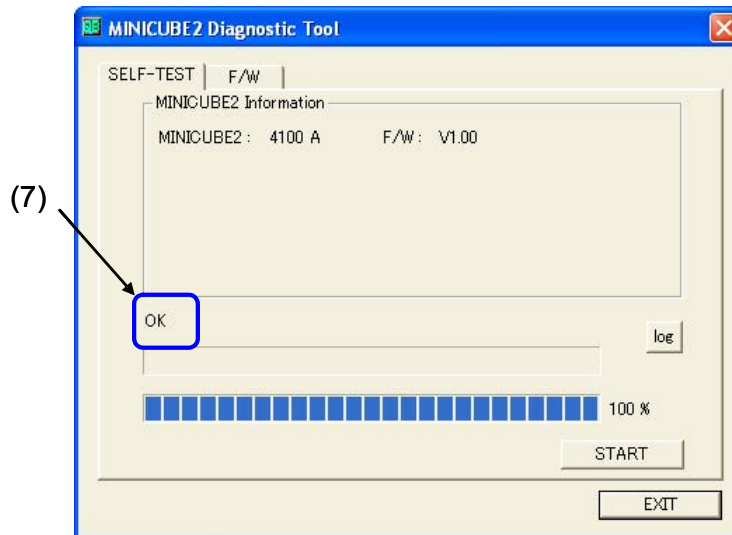




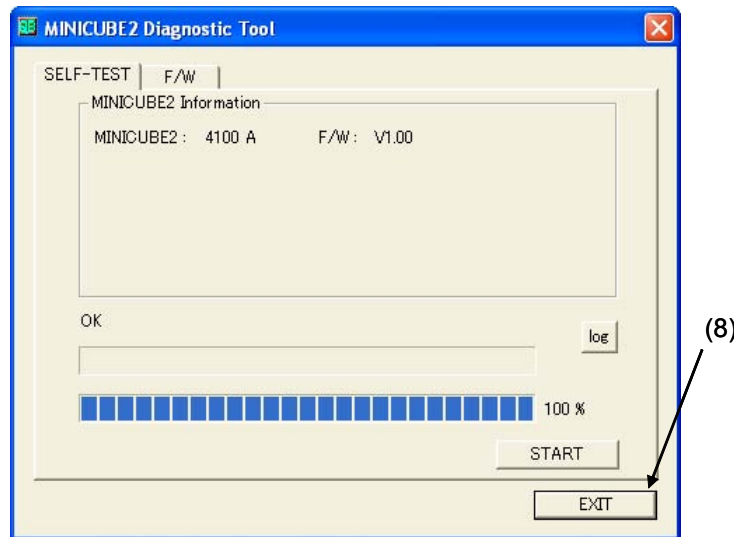
- (6) When all of the tests are complete, the final result dialog box is displayed as shown below. The contents displayed in the dialog box are saved in the log file. If an error occurs during self-testing, refer to **3.5 Action When NG Is Displayed**.  
Click the [OK] button.



- (7) "OK" is output as a final result.



(8) Click the [EXIT] button.



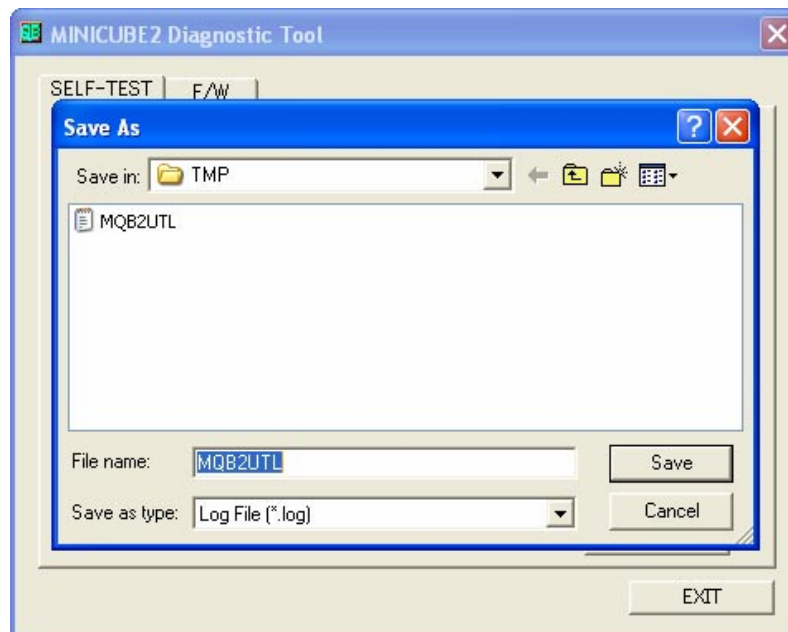
(9) Remove MINICUBE2 from the host machine.

### 3.4 Log File

After self-testing is performed, a log file is created to hold the result. The log file is overwritten each time the [OK] button is clicked in step (4) in **3.3 Execution of Self-Testing**.

#### 3.4.1 Specification of location for saving log file

The location for saving the log file can be changed by clicking the [log] button in step (1) in **3.3 Execution of Self-Testing**. The log file is created as "MQB2UTL.log" in a temporary directory by default. Normally, the temporary directory is specified in the tmp or temp environmental variable.



### 3.4.2 Format of log file

The following shows an example of the log file when the check results show “OK” statuses.

```

== mm/dd/yyyy tt:mm:ss Test start. ==

MINICUBE2 :    4100 A  F/W :   V1.00

MINICUBE2 SELF-TEST : OK
-----
+ USB power test : OK (4.8V)
+ Internal power test : OK (5.0V)
+ LED test : OK
+ Power SW test : 3V (3.2V)
+ Mode SW test : MODE2
+ 78K0S OCD board connect
+ 78K0S OCD board clock : 20.00 MHz } These items are tested only when
                                     } the 78K0-OCD board is connected.
+ RxD/SI port : OK
+ HS port : OK
+ RESET_IN port : OK
+ CLK_IN port : OK
+ TxD / SO / X2 port : OK
+ CLK / X1 port : OK
+ ASCK / SCK port : OK
+ FLMD0 port : OK
+ FLMD1 / INTP port : OK
+ RESET_OUT port : OK
OK

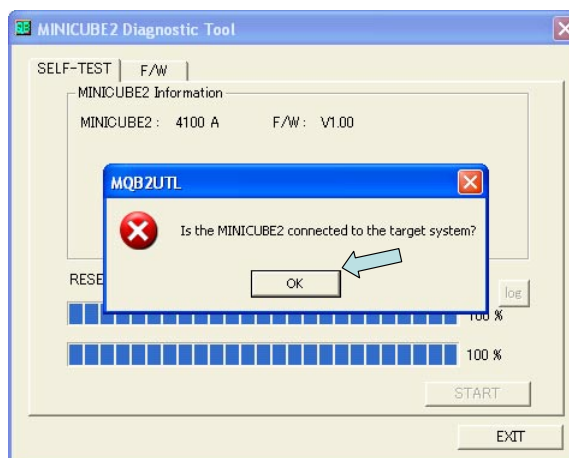
```

### 3.5 Action When NG Is Displayed

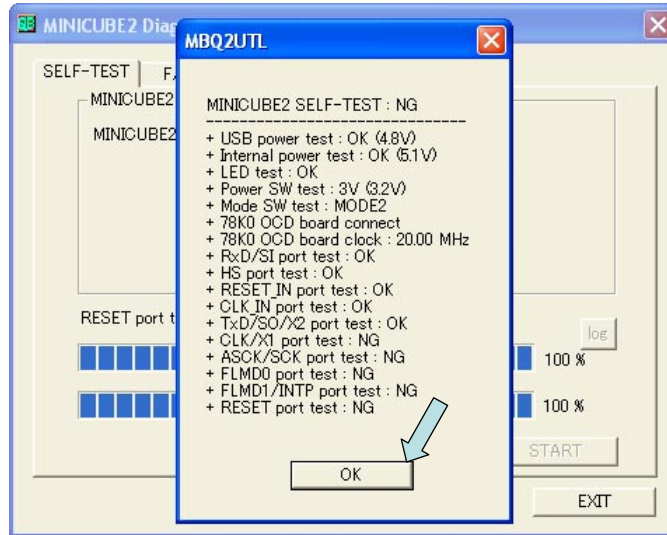
Operation when NG is displayed during self-testing (refer to **3.3 Execution of Self-Testing**) and relevant actions for coping with the errors (such as setting errors) are listed below.

#### 3.5.1 Operation when NG is displayed

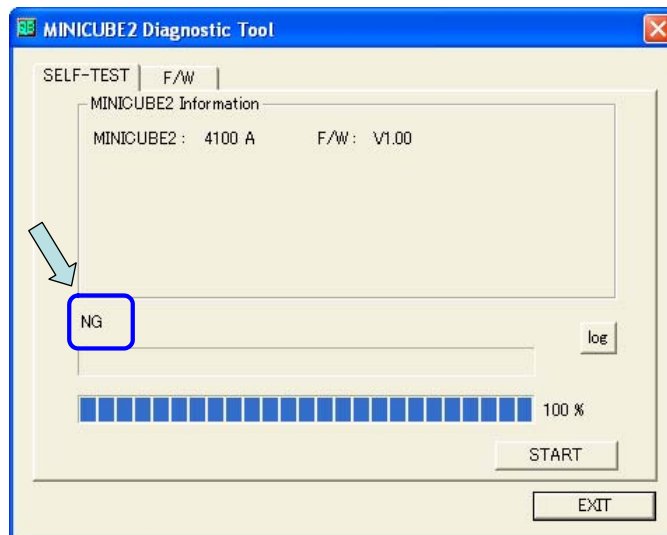
This message is displayed when an NG is displayed by the MINICUBE2 diagnostic tool for the first time. The result is not written to the log file at this stage. Click the [OK] button.



When self-testing for the second or later time, “NG” is displayed for items with which NG is detected, in the result dialog box of (6) in 3.3 Execution of Self-Testing. Click the [OK] button.



“NG” is output as a final result.



The result of “NG” is also written to the log file.

```

== mm/dd/yyyy tt:mm:ss Test start. ==

MINICUBE2 : 4100 A F/W : V1.00

MINICUBE2 SELF-TEST : NG ←
-----
+ USB power test : OK (4.8V)
+ Internal power test : OK (5.0V)
+ LED test : OK
+ Power SW test : 3V (3.2V)
+ Mode SW test : MODE2
+ 78K0S OCD board connect
+ 78K0S OCD board clock : 20.00 MHz
+ RxD/SI port test : OK
+ HS port test : OK
+ RESET_IN port test : OK
+ CLK_IN port test : OK
+ TxD/SO/X2 port test : OK
+ CLK/X1 port test : NG ←
+ ASCK/SCK port test : NG ←
+ FLMD0 port test : NG ←
+ FLMD1/INTP port test : NG ←
+ RESET_OUT port test : NG ←
NG ←

```

If the test result includes “NG” as shown above, the cause may be a defect in MINICUBE2. Refer to **3.2 Cautions on Self-Testing** and **3.5.2 Action for error**, and retry self-testing. If the same items resulted in “NG” even after the relevant action is implemented, the cause may be a defect in MINICUBE2. In such a case, consult an NEC Electronics sales representative or distributor.

### 3.5.2 Action for error

The errors that may occur during self-testing (such as setting error) and relevant actions for coping with the errors are listed below.

(1/2)

No.	Error message and action
1	Is the MINICUBE2 connected to the target system?
	MINICUBE2 may be connected to the target system. This message is displayed when an NG is displayed by the MINICUBE2 diagnostic tool for the first time. If MINICUBE2 is not connected to the target system, click the [START] button again to reexecute self-testing. If NG items are detected, the result is displayed in the result dialog box and written to the log file.
2	Self-checking is aborted. Please power-off the MINICUBE2, select either "3" or "5" of the power supply selection switch. then restart self-checking.
	This message is displayed when the power select switch is set to "T". Turn off the power to MINICUBE2, and then set the power select switch to "3" or "5".

(2/2)

No.	Error message and action
3	Self-checking is aborted. Please power-off the MINICUBE2, either remove the 78K0-OCD Board or select "M2" of the mode selection switch. then restart self-checking.
	This message is displayed when the 78K0-OCD board is connected while the mode select switch is set to "M1". Turn off the power to MINICUBE2, and then set the switch to "M2" or remove the 78K0-OCD board.
4	Communication Error. Self-checking is aborted.
	This message is displayed when a communication error occurs between the host machine and MINICUBE2 during self-testing. Check if the USB cable is disconnected.
5	MINICUBE2(USB) connect error.
	This message is displayed immediately after MINICUBE2 is connected to the host machine (before the LED glows). Possible causes are: MINICUBE2 is not connected to the host machine, the USB cable is disconnected, or the MINICUBE2 USB driver has an error. Check if the USB cable is disconnected.
6	Debugger already running. Self-checking is aborted.
	This message is displayed when the MINICUBE2 diagnostic tool and the debugger are running at the same time. Terminate the debugger.

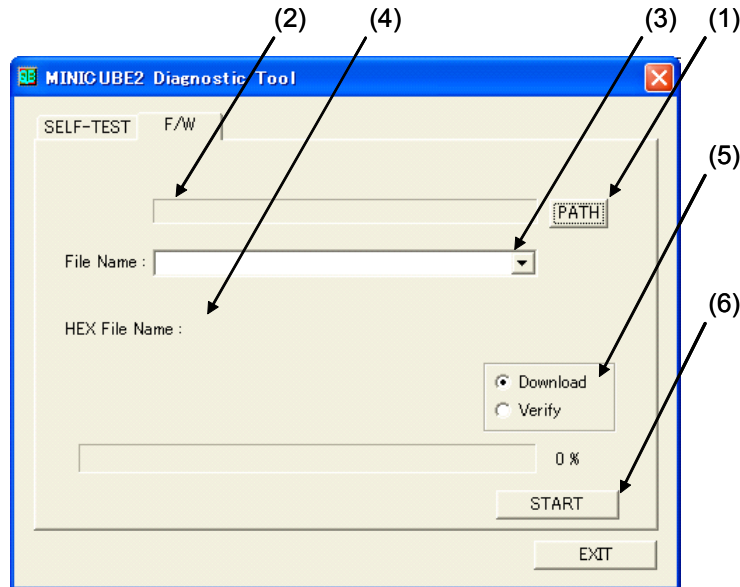
If an error message other than above is displayed, the cause may be a defect in MINICUBE2. If the same error message is displayed even after the above action is implemented, the cause may be a defect in MINICUBE2. In such a case, consult an NEC Electronics sales representative or distributor.

## CHAPTER 4 FIRMWARE DOWNLOAD FUNCTION

This section describes how to update (download) MINICUBE2 firmware embedded into the on-chip flash memory of the control CPU in MINICUBE2, and explains the window operation for verifying the downloaded firmware.

### 4.1 Explanation of Each Area

The following window is displayed by clicking the [F/W] tab. Explanation of each area is described below.



**(1) [PATH] button**

The file select dialog box is opened by clicking this button. Specify the path to the folder in which the MINICUBE2 firmware file to be downloaded is placed. The specified path is displayed in the text box.

**(2) Path indication**

The path specified by clicking the [PATH] button is displayed in this text box.

**(3) File Name drop-down list**

MINICUBE2 firmware to be downloaded is displayed. If MINICUBE2 firmware is stored where MQB2UTL.exe is stored, the file can be selected from the drop-down list.

**(4) HEX File Name**

The file name of MINICUBE2 firmware to be downloaded is displayed.

**(5) [Download] and [Verify] radio buttons**

Whether to download or verify MINICUBE2 firmware can be selected.

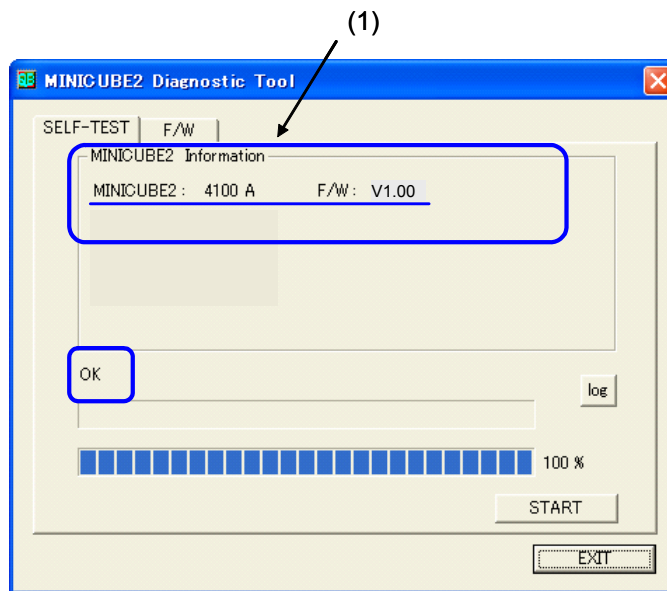
**(6) [START] button**

When this button is clicked, a confirmation dialog box appears and the downloading or verifying is started by clicking the [OK] button.

## 4.2 Version Check Before Downloading Firmware

Check the MINICUBE2 firmware version before downloading new firmware, according to the following steps (1) to (3).

- (1) Perform steps in **3.3 Execution of Self-Testing** and confirm that “OK” is displayed in step (7).  
Check the MINICUBE2 firmware version in the MINICUBE2 Information window. In the figure below, V1.00 described for “MINICUBE2 4100 A F/W” is the firmware version.



- (2) Access the following NEC Electronics websites for checking the latest version of MINICUBE2 firmware.  
Japanese version  
<http://www.necel.com/micro/ods/jpn/index.html>  
English version  
<http://www.necel.com/micro/ods/eng/index.html>  
See Version-up service → MINICUBE2\_Software.

- (3) Make sure that the version checked in step (1) differs from the version posted on the websites.  
If the version checked in step (1) is the latest version, do not execute this function.

## 4.3 Preparation of Download File

Download MINICUBE2 firmware (MINICUBE2\_Firmware\_Vxxx.hex) from the above website and save it in an arbitrary folder.



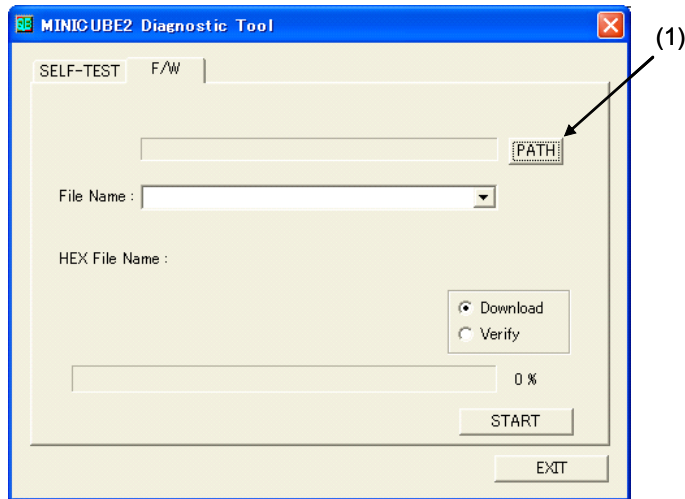
## 4.4 Downloading Firmware

Note the following points when updating MINICUBE2 firmware using the firmware download function.

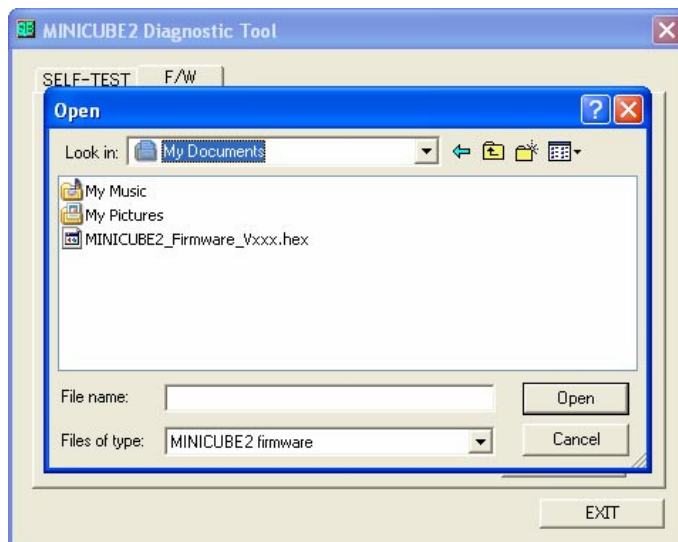
- Do not connect MINICUBE2 to the target system.
- Finish the MINICUBE2 switch setting before connecting MINICUBE2 to the host machine (power on).
  - Power select switch: Set this switch to “3” or “5”.
  - Mode select switch: Set this switch to “M1” or “M2”.
- Connection between MINICUBE2 and 78K0-OCD board
  - Whether the 78K0-OCD board is connected does not affect the operation.
- Terminate the debugger, QBP and MINICUBE OCD Checker.
- Be sure to remove MINICUBE2 from the host machine (power off) after firmware is updated.

Execute the firmware download function according to the following steps (1) to (12).

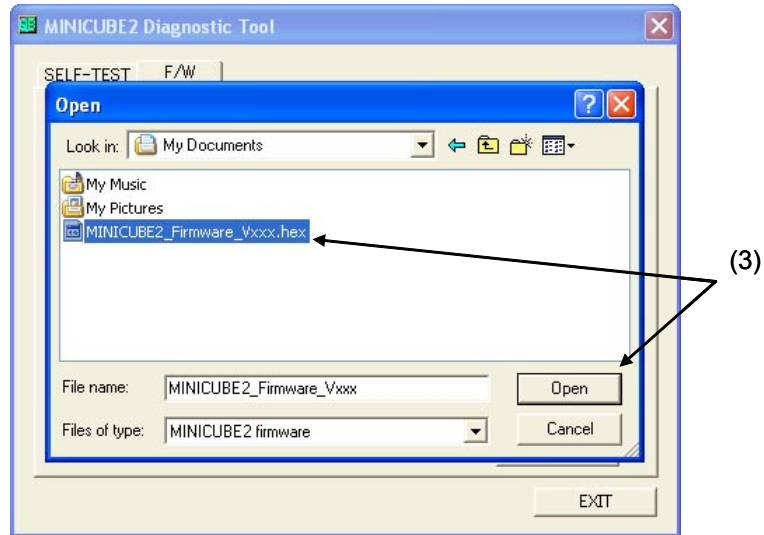
- (1) Click the [PATH] button.



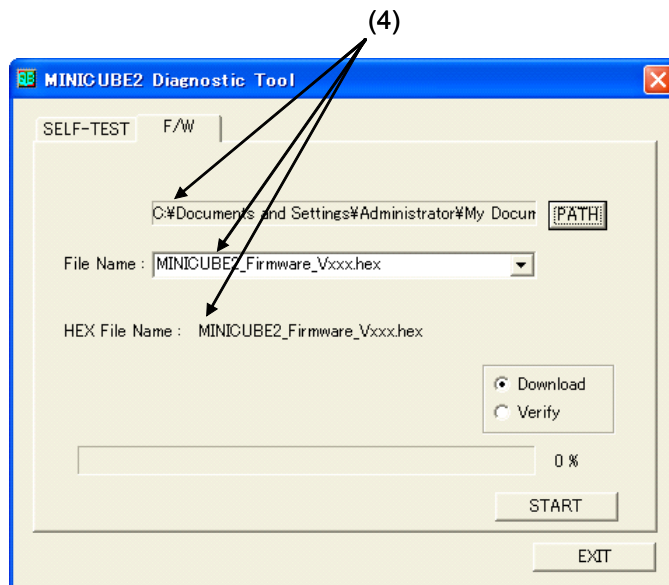
- (2) Specify the folder where MINICUBE2 firmware (MINICUBE2\_Firmware\_Vxxx.hex), which was prepared in 4.3 **Preparation of Download File**, is stored.



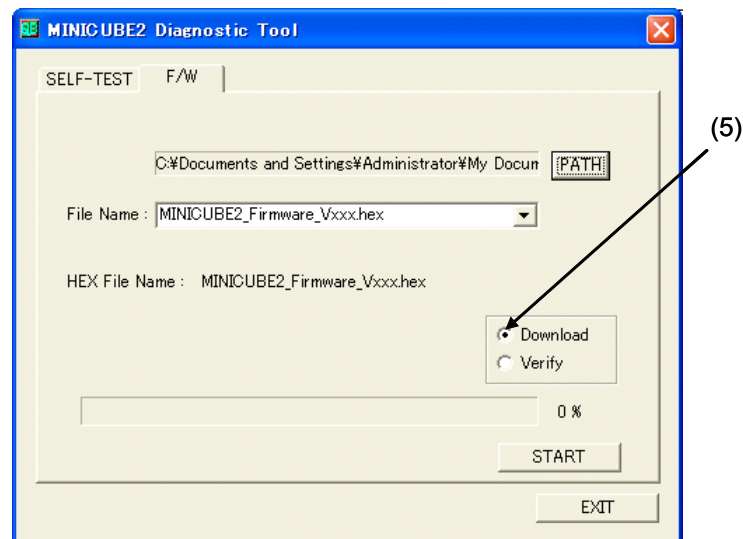
- (3) Specify MINICUBE2 firmware (MINICUBE2\_Firmware\_Vxxx.hex) from the folder, and then click the [Open] button.



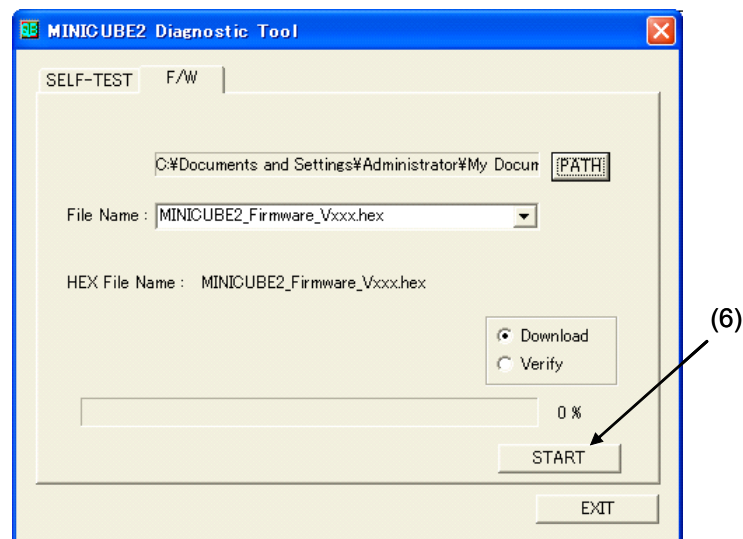
- (4) Confirm that the path to the folder where MINICUBE2 firmware is stored is displayed in the path indication area, and the specified MINICUBE2 firmware is displayed in [File Name] .



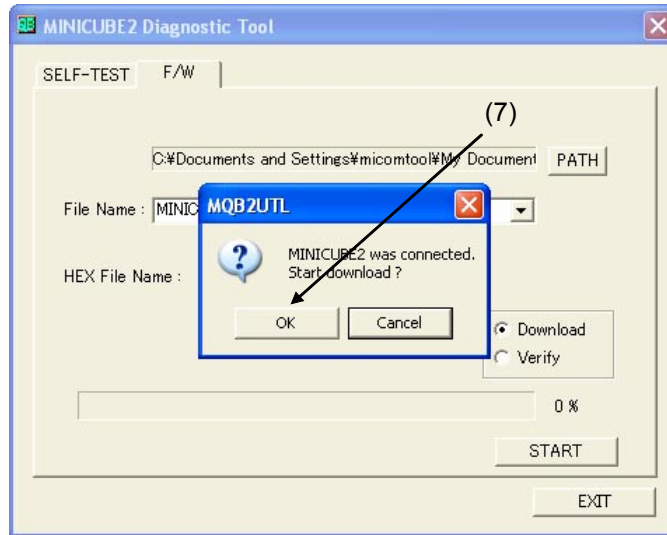
- (5) Select the [Download] radio button. [Download] is selected by default.



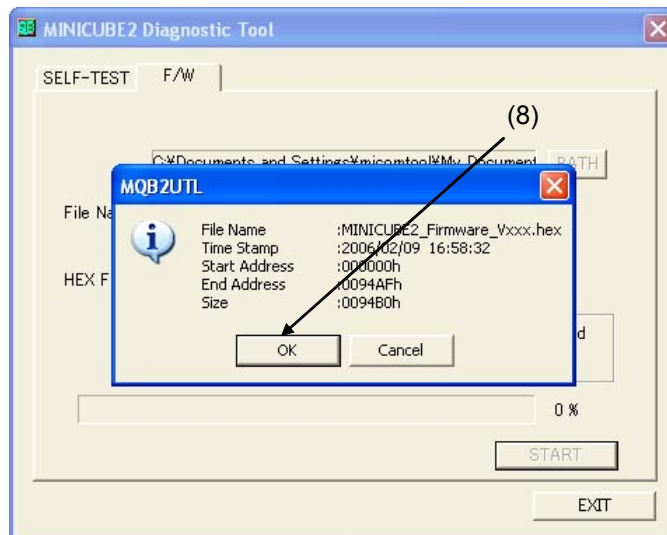
- (6) Click the [START] button.



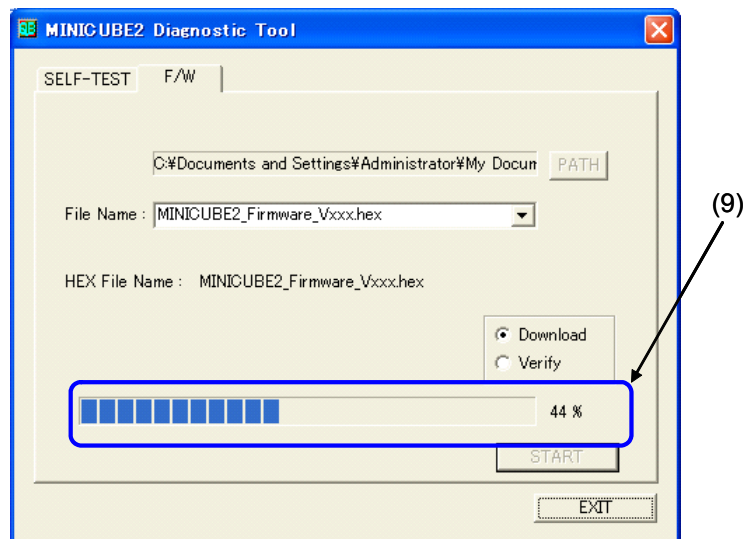
- (7) A dialog box indicating that MINICUBE2 connection was established appears and prompts the user to confirm the start of downloading. Click the [OK] button.



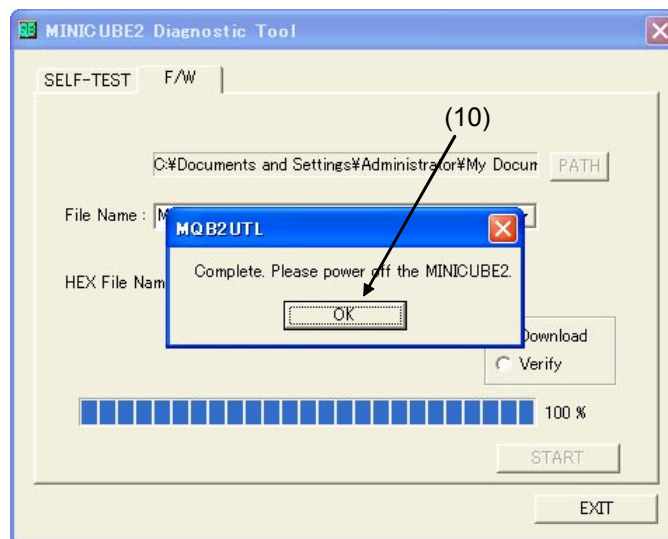
- (8) A dialog box for confirming the MINICUBE2 firmware file to be downloaded appears. Click the [OK] button.



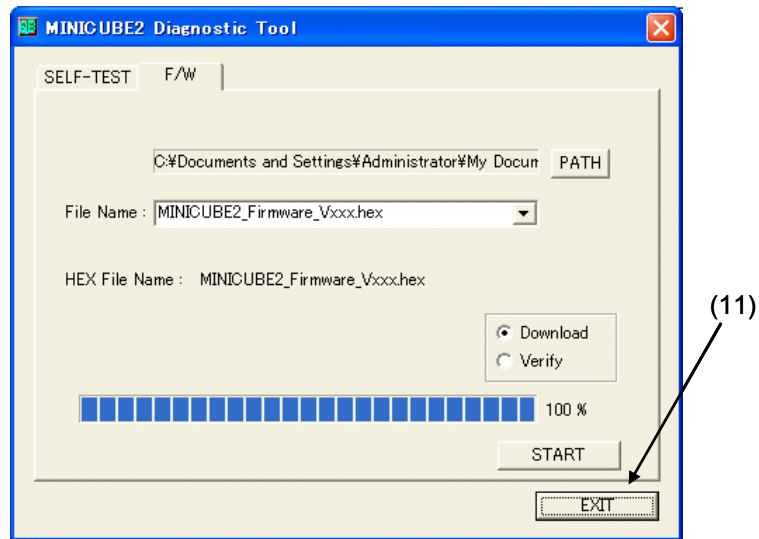
(9) The progress bar shows the status of downloading.



(10) A dialog box that informs the end of download appears. Click the [OK] button.



(11) Click the [EXIT] button.



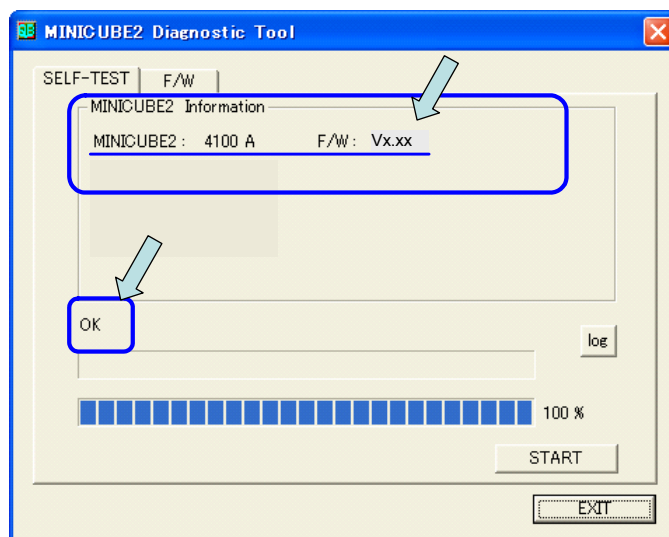
(12) Remove MINICUBE2 from the host machine.

**Caution** Be sure to remove MINICUBE2 from the host machine (power off) after the MINICUBE2 firmware update. If MINICUBE2 is run (executing the MINICUBE2 diagnostic tool, debugger, QBP or MINICUBE OCD Checker) after updating firmware, MINICUBE2 firmware is not updated completely and MINICUBE2 does not operate normally.

#### 4.5 Version Check After Downloading Firmware

Perform the steps in 3.3 **Execution of Self-Testing** and check the version of MINICUBE2 firmware. Perform the steps in 3.3 **Execution of Self-Testing** and confirm that "OK" is displayed in step (7).

Confirm that the MINICUBE2 firmware version is updated in the MINICUBE2 Information window.



## 4.6 Failure in Firmware Download

If an attempt is made to update firmware according to the descriptions in **4.4 Downloading Firmware** but the operation results in any of the following, consult an NEC Electronics sales representative or distributor.

- Firmware could not be downloaded normally.

**Example** Downloading of MINICUBE2 firmware is stopped during a step in **4.4 Downloading Firmware**, and no matter how many times the step is repeated from (1), the result is the same.

- After downloading firmware, the version could not be checked normally.

**Examples 1. 3.3 Execution of Self-Testing** results in “NG”

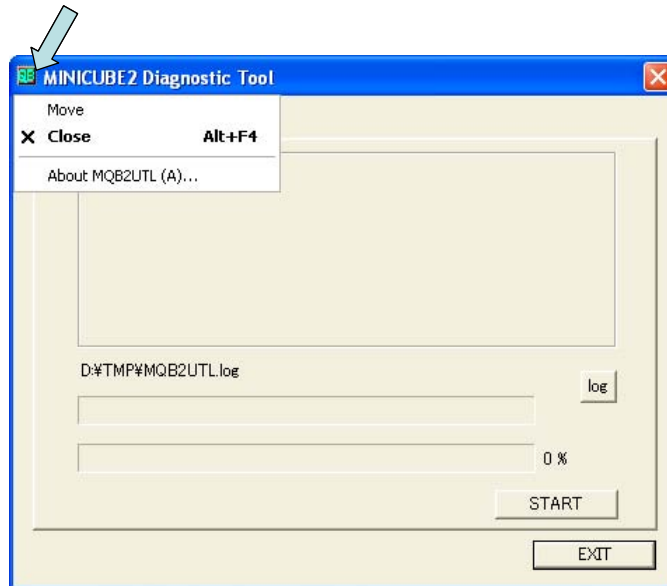
2. Version information displayed in **3.3 Execution of Self-Testing** differs from the one expected

- The debugger or QBP does not start normally.

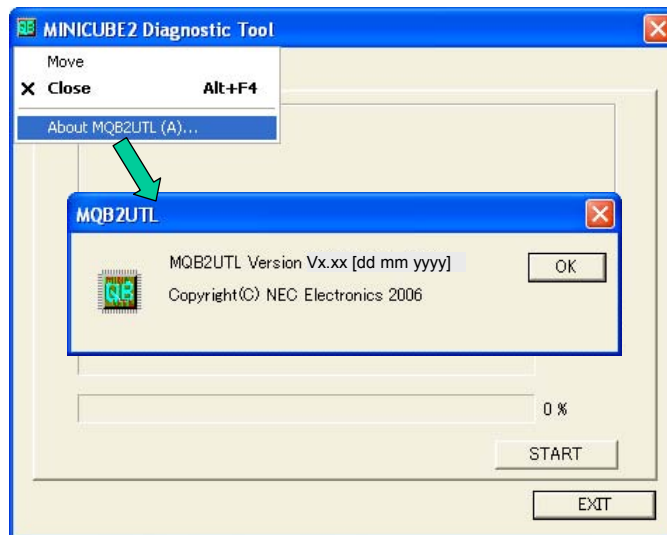
## CHAPTER 5 VERSION INDICATION

This section describes the method to check the version.

Click the icon on the title bar or right-click the title bar; the system menu is then displayed.



Click "About MQB2UTL(A)..." on the system menu; the version information window then appears.





## CHAPTER 6 UNINSTALLATION

This section explains how to uninstall the MINICUBE2 diagnostic tool.

Note the following points when uninstalling the MINICUBE2 diagnostic tool.

- The MINICUBE OCD Checker is uninstalled at the same time.
- The log files are not deleted by uninstalling the MINICUBE2 diagnostic tool.

Perform uninstallation according to the following steps (1) to (5).

- (1) Turn on power to the host machine and start Windows.
- (2) Start "Add/Remove Programs" or "Add or Remove Programs" in the Control Panel.
- (3) Select the relevant item from the list displayed on the Install/Uninstall tab, and then click the [Add/Remove...] or [Change/Remove] button.
  - To uninstall the MINICUBE2 diagnostic tool: "NEC EL MINICUBE Utilities Vx.xx"
  - To uninstall this document: "NEC EL MINICUBE Utilities Vx.xx Documents"
- (4) A dialog box for confirming deletion of files will be displayed. Click the [Yes] button, deleting the files will then be started.
- (5) When the completion message is displayed, click the [OK] button. This completes uninstalling the MINICUBE2 diagnostic tool.

**APPENDIX A REVISION HISTORY****A.1 Major Revisions in This Edition**

Page	Description
<b>CHAPTER 2 INSTALLATION AND STARTUP</b>	
p.8	Addition of description in <b>2.1.1 Installation</b>
	Addition of description in <b>2.1.2 Startup</b>
<b>APPENDIX A REVISION HISTORY</b>	
p.32	Addition of <b>APPENDIX A REVISION HISTORY</b>

[MEMO]

[MEMO]

**[MEMO]**

*For further information,  
please contact:*

**NEC Electronics Corporation**  
1753, Shimonumabe, Nakahara-ku,  
Kawasaki, Kanagawa 211-8668,  
Japan  
Tel: 044-435-5111  
<http://www.necel.com/>

**[America]**

**NEC Electronics America, Inc.**  
2880 Scott Blvd.  
Santa Clara, CA 95050-2554, U.S.A.  
Tel: 408-588-6000  
800-366-9782  
<http://www.am.necel.com/>

**[Europe]**

**NEC Electronics (Europe) GmbH**  
Arcadiastrasse 10  
40472 Düsseldorf, Germany  
Tel: 0211-65030  
<http://www.eu.necel.com/>

**Hanover Office**

Podbielskistrasse 166 B  
30177 Hannover  
Tel: 0 511 33 40 2-0

**Munich Office**

Werner-Eckert-Strasse 9  
81829 München  
Tel: 0 89 92 10 03-0

**Stuttgart Office**

Industriestrasse 3  
70565 Stuttgart  
Tel: 0 711 99 01 0-0

**United Kingdom Branch**

Cygnus House, Sunrise Parkway  
Linford Wood, Milton Keynes  
MK14 6NP, U.K.  
Tel: 01908-691-133

**Succursale Française**

9, rue Paul Dautier, B.P. 52  
78142 Velizy-Villacoublay Cédex  
France  
Tel: 01-3067-5800

**Sucursal en España**

Juan Esplandiú, 15  
28007 Madrid, Spain  
Tel: 091-504-2787

**Tyskland Filial**

Täby Centrum  
Entrance S (7th floor)  
18322 Täby, Sweden  
Tel: 08 638 72 00

**Filiale Italiana**

Via Fabio Filzi, 25/A  
20124 Milano, Italy  
Tel: 02-667541

**Branch The Netherlands**

Steijgerweg 6  
5616 HS Eindhoven  
The Netherlands  
Tel: 040 265 40 10

**[Asia & Oceania]**

**NEC Electronics (China) Co., Ltd**

7th Floor, Quantum Plaza, No. 27 ZhiChunLu Haidian  
District, Beijing 100083, P.R.China  
Tel: 010-8235-1155  
<http://www.cn.necel.com/>

**Shanghai Branch**

Room 2509-2510, Bank of China Tower,  
200 Yincheng Road Central,  
Pudong New Area, Shanghai, P.R.China P.C:200120  
Tel:021-5888-5400  
<http://www.cn.necel.com/>

**Shenzhen Branch**

Unit 01, 39/F, Excellence Times Square Building,  
No. 4068 Yi Tian Road, Futian District, Shenzhen,  
P.R.China P.C:518048  
Tel:0755-8282-9800  
<http://www.cn.necel.com/>

**NEC Electronics Hong Kong Ltd.**

Unit 1601-1613, 16/F., Tower 2, Grand Century Place,  
193 Prince Edward Road West, Mongkok, Kowloon, Hong Kong  
Tel: 2886-9318  
<http://www.hk.necel.com/>

**NEC Electronics Taiwan Ltd.**

7F, No. 363 Fu Shing North Road  
Taipei, Taiwan, R. O. C.  
Tel: 02-8175-9600  
<http://www.tw.necel.com/>

**NEC Electronics Singapore Pte. Ltd.**

238A Thomson Road,  
#12-08 Novena Square,  
Singapore 307684  
Tel: 6253-8311  
<http://www.sg.necel.com/>

**NEC Electronics Korea Ltd.**

11F., Samik Lavied'or Bldg., 720-2,  
Yeoksam-Dong, Kangnam-Ku,  
Seoul, 135-080, Korea  
Tel: 02-558-3737  
<http://www.kr.necel.com/>