

## ISL8106EVAL1Z

### Evaluation Board

AN1452  
Rev 0.00  
Feb 16, 2009

The ISL8106EVAL1Z evaluation board demonstrates the performances of the ISL8106, synchronous buck PWM controller with Intersil's Robust Ripple Regulator (R3) technology.

The ISL8106 features a 1.5ms digital soft-start and can be started into a pre-biased output voltage. The PWM switching frequency can be programmed from 200kHz to 600kHz. The ISL8106 can be configured to operate in Forced-Continuous-Conduction-Mode (FCCM) or in Diode-Emulation-Mode (DEM), which improves light-load efficiency. An audio filter prevents the PWM switching frequency from entering the audible spectrum due to extremely light load while in DEM. Refer to the ISL8106 data sheet for a more detailed operation by clicking on the following link.

<http://www.intersil.com/data/fn/fn9283.pdf>

### ISL8106EVAL1Z Reference Design

The ISL8106EVAL1Z design criteria is listed in Table 1.

**TABLE 1. ISL8106EVAL1Z DESIGN CRITERIA**

PARAMETERS	VALUE
Input Voltage	7V to 25V
Output Voltage	1.8V
Rated Output Current	25A
Switching Frequency	300kHz

### Setting Switching Frequency

The switching frequency of ISL8106EVAL1Z can be adjusted through the resistor, R<sub>5</sub>, that is connected from the FSET pin to the GND pin. Programming the approximate PWM switching frequency can be estimated from Equation 1:

$$R_{FSET} = \frac{1}{60 \cdot F_{OSC} \cdot [1 \times 10^{-12}]} \quad (\text{EQ. 1})$$

### Setting Overcurrent Protection Threshold

An overcurrent protection fault will occur when the ISEN pin has measured more than the OCP threshold current I<sub>OC</sub> (26μA, typ.), on consecutive PWM pulses, for a period exceeding 20μs. It does not matter how many PWM pulses are measured during the 20μs period. If a measurement falls below I<sub>OC</sub> before 20μs has elapsed, then the timer is reset to zero. A short circuit protection fault will occur when the ISEN pin has measured more than the short-circuit threshold current I<sub>SC</sub>, in less than 10μs, on consecutive PWM pulses.

The value of R<sub>SEN</sub> can then be calculated by Equation 2:

$$R_{SEN} = \frac{\left[ I_{FL} + \frac{I_{P-P}}{2} \right] \cdot OC_{SP} \cdot r_{DS(ON)}}{I_{OC}} \quad (\text{EQ. 2})$$

Where:

- R<sub>SEN</sub> (Ω) is the resistor used to program the overcurrent setpoint
- I<sub>OC</sub> is the I<sub>SEN</sub> threshold current value sourced from the ISEN pin that will activate the OCP circuit
- I<sub>FL</sub> is the maximum continuous DC load current
- I<sub>P-P</sub> is the inductor peak-to-peak ripple current
- OC<sub>SP</sub> is the desired overcurrent setpoint expressed as a multiplier relative to I<sub>FL</sub>

### Power and Load Connections

#### INPUT VOLTAGE

The PVIN post (J1) is connected to the drain of the upper MOSFET and the VIN pin of the IC. The post (J2) is connected to PGND.

#### OUTPUT VOLTAGE LOADING AND MONITORING

Connect the positive and negative leads of an electronic load to J3 and J4 respectively. Terminal TP4 (PGND) and TP5 (V<sub>OUT</sub>) can be used to measure the output voltage.

### Switch Descriptions

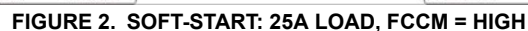
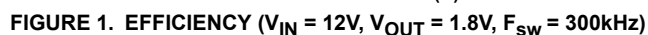
**TABLE 2. ISL8106EVAL1Z SWITCH DESCRIPTIONS**

TOGGLE SWITCHES	FUNCTION
SW1	OFF: Shorts the EN pin to GND (Disable the controller) ON: Enable the controller, EN pin is pulled to V <sub>IN</sub> and clamped by D1.
SW2	DEM: FCCM pin is pulled to GND to enable diode-emulation mode FCCM: FCCM pin is pulled to VCC to inhibits diode-emulation mode

### Test-point Descriptions

**TABLE 3. ISL8106EVAL1Z TEST POINT DESCRIPTIONS**

TEST POINTS	SIGNALS
TP1	VCC
TP2	PGND
TP3	PGOOD
TP4	PGND
TP5	VOUT
TP6	PVIN
TP6	LX



## Typical Performance Curves (Continued)

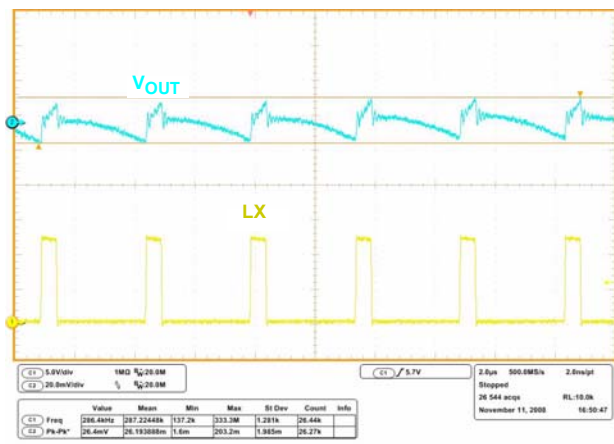


FIGURE 7. STEADY STATE: 1A LOAD (FCM)

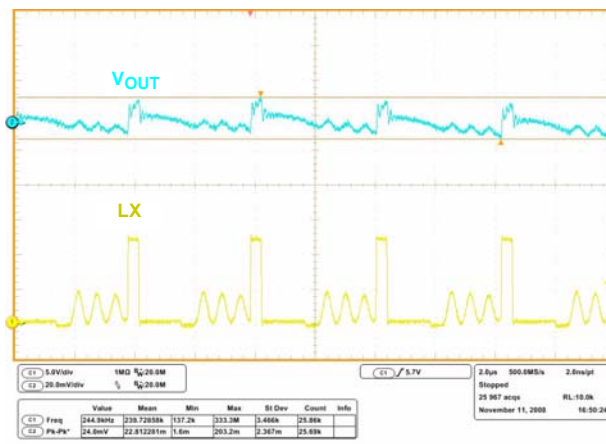


FIGURE 8. STEADY STATE: 1A LOAD (DEM)

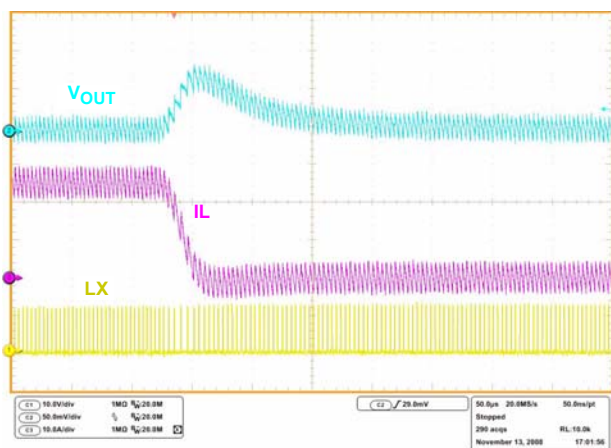


FIGURE 9. LOAD TRANSIENT: 25A TO 0A (CCM)

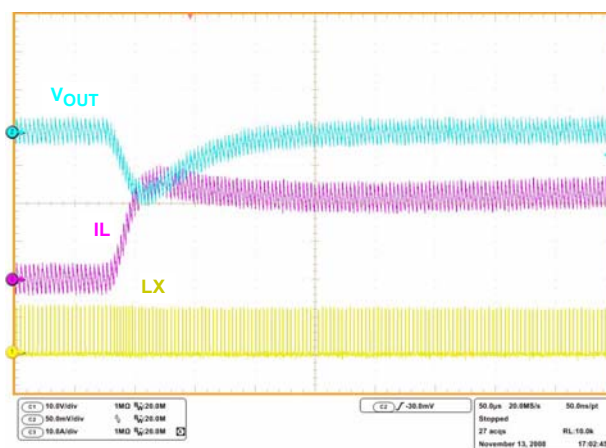


FIGURE 10. LOAD TRANSIENT: 0A TO 25A (CCM)

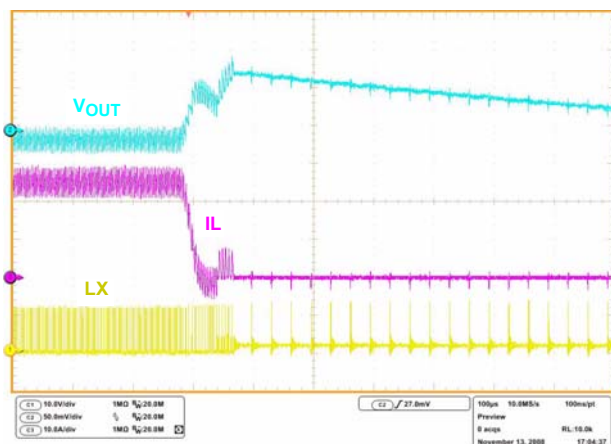


FIGURE 11. LOAD TRANSIENT: 25A TO 0A (DCM-CCM)

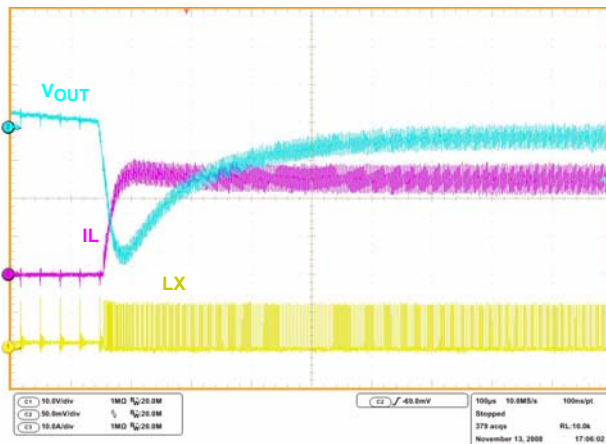


FIGURE 12. LOAD TRANSIENT: 0A TO 25A (CCM-DCM)



**ISL8106EVAL1Z Bill of Materials**

ID	REFERENCE	QTY	PART NUMBER	PART TYPE	DESCRIPTION	PACKAGE	VENDOR
1	U1	1	ISL8106IRZ	IC, Linear	IC, Single PWM Controller	16Ld QFN	Intersil
2	Q1, Q3	2	BSC059N04LS G	MOSFET, Single	N-Channel, 40V	TDSON-8	Infineon
3	Q2, Q4	2	BSC018N04LS G	MOSFET, Single	N-Channel, 40V	TDSON-8	Infineon
4	Q5	1	BSS123LT1G	MOSFET	N-Channel	SOT-23	On Semi
5	D1	1	BST52C4V7-7-F	Zener Diode	4.7V, 500mW Zener Diode	SOD-123	Diode Inc.
6	D2	1	SSL-LXA3025IGC-TR	LED	RED/GREEN SMD LED	SMD 3mmx2.5mm	Lumex
7	L1	1	IHLP-5050FD-01-R68-M01	Inductor	0.68μH Power Inductor	SMD	Vishay

**CAPACITORS**

8	C15, C16	2	EKZE350ELL561MJ25S	Capacitor, Alum. Elec.	560μF, 20%, 35V	RAD 10x25	United Chemi-con
9	C13, C14	2	C3225X7R1H335M	Capacitor, Ceramic, X7R	3.3μF, 10%, 50V	SM_1210	TDK/Generic
10	C4, C7, C8	3		Capacitor, Ceramic, X7R	1000pF, 10%, 50V	SM_0603	Generic
11	C1, C5, C9	3		Capacitor, Ceramic, X7R	0.01μF, 10%, 50V	SM_0603	Generic
12	C12, C19, C20, C21, C22	5		Capacitor, Ceramic, X7R	0.1μF, 10%, 50V	SM_0603	Generic
13	C10	1		Capacitor, Ceramic, X7R	0.22μF, 10%, 25V	SM_0603	Generic
14	C6, C11	2		Capacitor, Ceramic, X5R	4.7μF, 10%, 6.3V	SM_0603	Generic
15	C27, C28, C29, C30	4	6TPF330M9L	Capacitor, POSCAP	330μF, 20%, 6.3V, 0.009Ω	Case D3L	SANYO
16	C2	1		Capacitor, Ceramic, X5R	68pF, 10%, 50V	SM_0603	Generic
17	C17, C23, C24, C25, C26	0	Do Not Populate				

**RESISTORS**

18	R1	1		Resistor, Film	2kΩ, 1%, 1/16W	SM_0603	Panasonic/Generic
19	R2	1		Resistor, Film	15.8kΩ, 1%, 1/16W	SM_0603	Panasonic/Generic
20	R4, R6	1		Resistor, Film	1kΩ, 1%, 1/16W	SM_0603	Panasonic/Generic
21	R21, R22	0	Do Not Populate			SM_0603	
22	R5	1		Resistor, Film	54.9kΩ, 1%, 1/16W	SM_0603	Panasonic/Generic
23	R7, R16	1		Resistor, Film	4.7Ω, 1%, 1/16W	SM_0603	Panasonic/Generic
24	R8	1		Resistor, Film	10.7kΩ, 1%, 1/16W	SM_0603	Panasonic/Generic
25	R3, R12, R13, R15, R19, R20	6		Resistor, Film	0Ω, 1%, 1/16W	SM_0603	Panasonic/Generic
26	R9	1		Resistor, Film	1.69kΩ, 1%, 1/16W	SM_0603	Panasonic/Generic
27	R10, R11	2		Resistor, Film	4.7kΩ, 1%, 1/16W	SM_0603	Panasonic/Generic
28	R14	1		Resistor, Film	10Ω, 1%, 1/16W	SM_0603	Panasonic/Generic
29	R17	1		Resistor, Film	5.9kΩ, 1%, 1/16W	SM_0603	Panasonic/Generic
30	R18	1		Resistor, Film	2.2Ω, 1%, 1/16W	SM_0603	Panasonic/Generic

ISL8106EVAL1Z Bill of Materials (Continued)

ID	REFERENCE	QTY	PART NUMBER	PART TYPE	DESCRIPTION	PACKAGE	VENDOR
OTHERS							
31	SW1, SW2	2	GT11MSCKE		Toggle Switch	SMD	C&K
32	P1	1	Do Not Populate				
33	TP1-TP6	6	5002	TEST POINT vertical, white	PC test jack	PTH	Keystone
34	TP7	0	Do Not Populate				
35	J1, J2	2			Blinding Post		
36	J5	1			1X2 Header		
37	J3, J4	2	KPA8CTP		Cable Terminal		BERG/FCI

ISL8106EVAL1Z Printed Circuit Board Layers

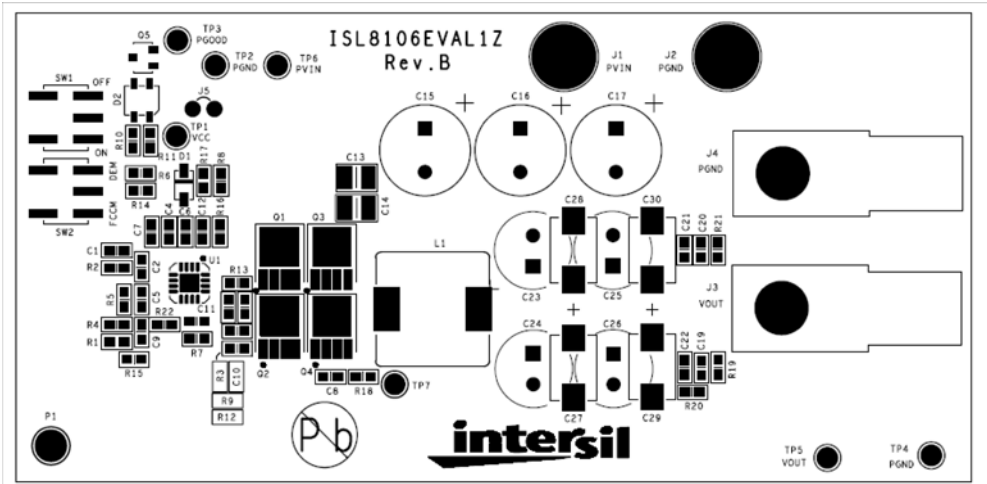


FIGURE 13. ISL8106EVAL1Z - TOP LAYER (SILKSCREEN)

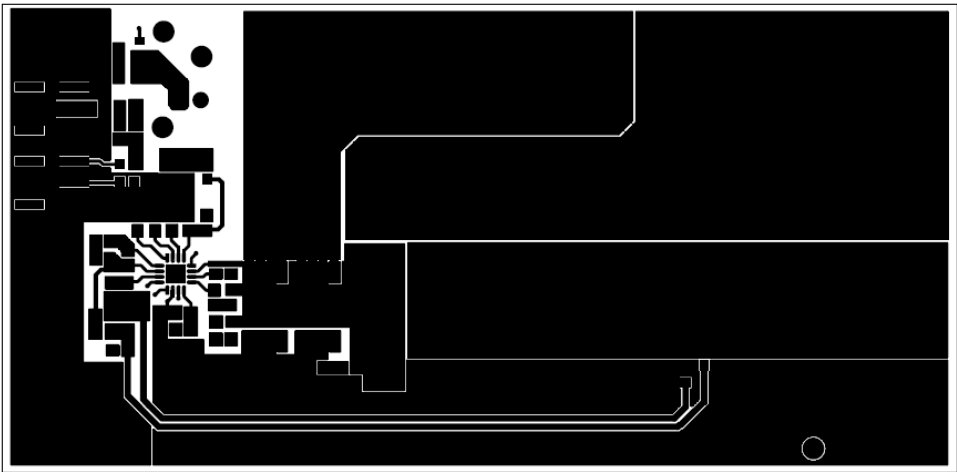


FIGURE 14. ISL8106EVAL1Z - TOP LAYER (COMPONENT SIDE)

**ISL8106EVAL1Z Printed Circuit Board Layers** (Continued)

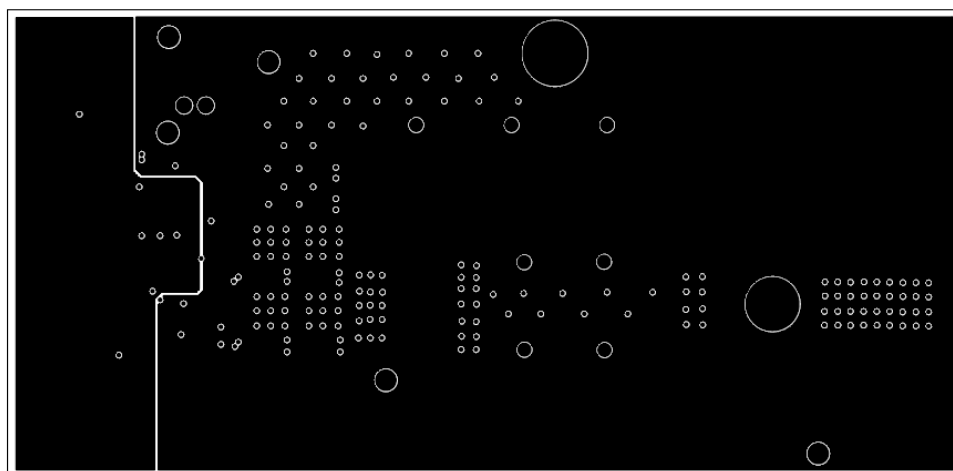


FIGURE 15. ISL8106EVAL1Z - LAYER 2

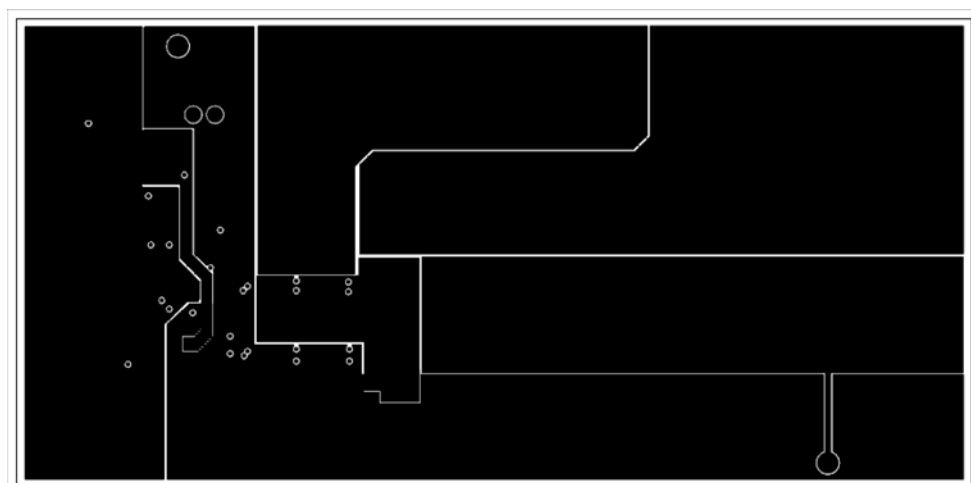


FIGURE 16. ISL8106EVAL1Z - LAYER 3



# **ISL8106EVAL1Z Printed Circuit Board Layers** (Continued)

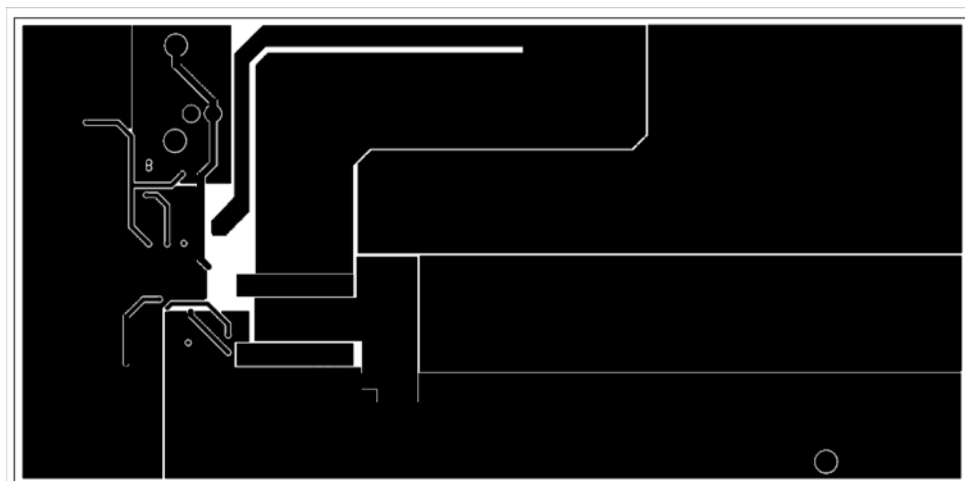


FIGURE 17. ISL8106EVAL1Z - BOTTOM LAYER (SOLDER SIDE)

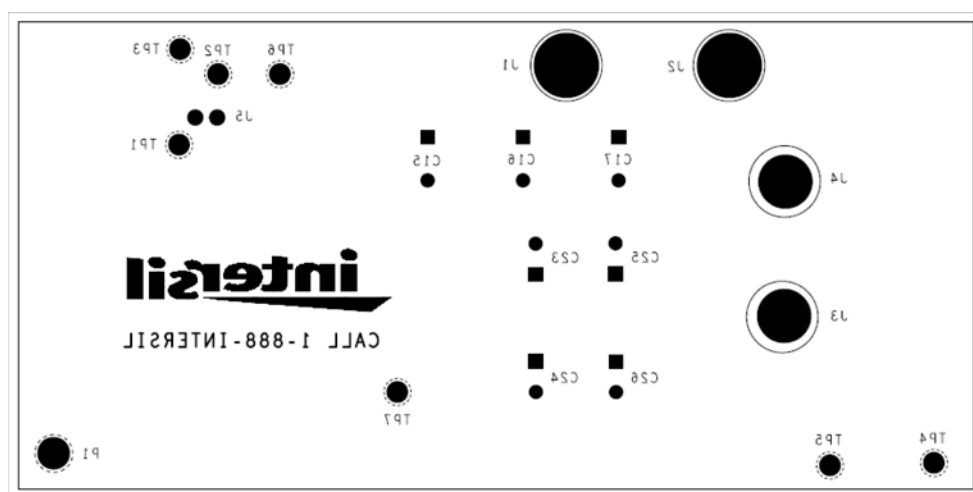


FIGURE 18. ISL8106EVAL1Z - BOTTOM LAYER (SILKSCREEN)



## Notice

1. Descriptions of circuits, software and other related information in this document are provided only to illustrate the operation of semiconductor products and application examples. You are fully responsible for the incorporation or any other use of the circuits, software, and information in the design of your product or system. Renesas Electronics disclaims any and all liability for any losses and damages incurred by you or third parties arising from the use of these circuits, software, or information.
  2. Renesas Electronics hereby expressly disclaims any warranties against and liability for infringement or any other claims involving patents, copyrights, or other intellectual property rights of third parties, by or arising from the use of Renesas Electronics products or technical information described in this document, including but not limited to, the product data, drawings, charts, programs, algorithms, and application examples.
  3. No license, express, implied or otherwise, is granted hereby under any patents, copyrights or other intellectual property rights of Renesas Electronics or others.
  4. You shall not alter, modify, copy, or reverse engineer any Renesas Electronics product, whether in whole or in part. Renesas Electronics disclaims any and all liability for any losses or damages incurred by you or third parties arising from such alteration, modification, copying or reverse engineering.
  5. Renesas Electronics products are classified according to the following two quality grades: "Standard" and "High Quality". The intended applications for each Renesas Electronics product depends on the product's quality grade, as indicated below.

"Standard": Computers; office equipment; communications equipment; test and measurement equipment; audio and visual equipment; home electronic appliances; machine tools; personal electronic equipment; industrial robots; etc.

"High Quality": Transportation equipment (automobiles, trains, ships, etc.); traffic control (traffic lights); large-scale communication equipment; key financial terminal systems; safety control equipment; etc.

Unless expressly designated as a high reliability product or a product for harsh environments in a Renesas Electronics data sheet or other Renesas Electronics document, Renesas Electronics products are not intended or authorized for use in products or systems that may pose a direct threat to human life or bodily injury (artificial life support devices or systems; surgical implantations; etc.), or may cause serious property damage (space system; undersea repeaters; nuclear power control systems; aircraft control systems; key plant systems; military equipment; etc.). Renesas Electronics disclaims any and all liability for any damages or losses incurred by you or any third parties arising from the use of any Renesas Electronics product that is inconsistent with any Renesas Electronics data sheet, user's manual or other Renesas Electronics document.
  6. When using Renesas Electronics products, refer to the latest product information (data sheets, user's manuals, application notes, "General Notes for Handling and Using Semiconductor Devices" in the reliability handbook, etc.), and ensure that usage conditions are within the ranges specified by Renesas Electronics with respect to maximum ratings, operating power supply voltage range, heat dissipation characteristics, installation, etc. Renesas Electronics disclaims any and all liability for any malfunctions, failure or accident arising out of the use of Renesas Electronics products outside of such specified ranges.
  7. Although Renesas Electronics endeavors to improve the quality and reliability of Renesas Electronics products, semiconductor products have specific characteristics, such as the occurrence of failure at a certain rate and malfunctions under certain use conditions. Unless designated as a high reliability product or a product for harsh environments in a Renesas Electronics data sheet or other Renesas Electronics document, Renesas Electronics products are not subject to radiation resistance design. You are responsible for implementing safety measures to guard against the possibility of bodily injury, injury or damage caused by fire, and/or danger to the public in the event of a failure or malfunction of Renesas Electronics products, such as safety design for hardware and software, including but not limited to redundancy, fire control and malfunction prevention, appropriate treatment for aging degradation or any other appropriate measures. Because the evaluation of microcomputer software alone is very difficult and impractical, you are responsible for evaluating the safety of the final products or systems manufactured by you.
  8. Please contact a Renesas Electronics sales office for details as to environmental matters such as the environmental compatibility of each Renesas Electronics product. You are responsible for carefully and sufficiently investigating applicable laws and regulations that regulate the inclusion or use of controlled substances, including without limitation, the EU RoHS Directive, and using Renesas Electronics products in compliance with all these applicable laws and regulations. Renesas Electronics disclaims any and all liability for damages or losses occurring as a result of your noncompliance with applicable laws and regulations.
  9. Renesas Electronics products and technologies shall not be used for or incorporated into any products or systems whose manufacture, use, or sale is prohibited under any applicable domestic or foreign laws or regulations. You shall comply with any applicable export control laws and regulations promulgated and administered by the governments of any countries asserting jurisdiction over the parties or transactions.
  10. It is the responsibility of the buyer or distributor of Renesas Electronics products, or any other party who distributes, disposes of, or otherwise sells or transfers the product to a third party, to notify such third party in advance of the contents and conditions set forth in this document.
  11. This document shall not be reprinted, reproduced or duplicated in any form, in whole or in part, without prior written consent of Renesas Electronics.
  12. Please contact a Renesas Electronics sales office if you have any questions regarding the information contained in this document or Renesas Electronics products.
- (Note 1) "Renesas Electronics" as used in this document means Renesas Electronics Corporation and also includes its directly or indirectly controlled subsidiaries.
- (Note 2) "Renesas Electronics product(s)" means any product developed or manufactured by or for Renesas Electronics.

(Rev.4.0-1 November 2017)



### SALES OFFICES

### Renesas Electronics Corporation

<http://www.renesas.com>

Refer to "<http://www.renesas.com/>" for the latest and detailed information.

**Renesas Electronics America Inc.**  
1001 Murphy Ranch Road, Milpitas, CA 95035, U.S.A.  
Tel: +1-408-432-8888, Fax: +1-408-434-5351

**Renesas Electronics Canada Limited**  
9251 Yonge Street, Suite 8309 Richmond Hill, Ontario Canada L4C 9T3  
Tel: +1-905-237-2004

**Renesas Electronics Europe Limited**  
Dukes Meadow, Millboard Road, Bourne End, Buckinghamshire, SL8 5FH, U.K  
Tel: +44-1628-651-700, Fax: +44-1628-651-804

**Renesas Electronics Europe GmbH**  
Arcadiastrasse 10, 40472 Düsseldorf, Germany  
Tel: +49-211-6503-0, Fax: +49-211-6503-1327

**Renesas Electronics (China) Co., Ltd.**  
Room 1709 Quantum Plaza, No.27 ZhichunLu, Haidian District, Beijing, 100191 P. R. China  
Tel: +86-10-8235-1155, Fax: +86-10-8235-7679

**Renesas Electronics (Shanghai) Co., Ltd.**  
Unit 301, Tower A, Central Towers, 555 Langao Road, Putuo District, Shanghai, 200333 P. R. China  
Tel: +86-21-2226-0888, Fax: +86-21-2226-0999

**Renesas Electronics Hong Kong Limited**  
Unit 1601-1611, 16/F., Tower 2, Grand Century Place, 193 Prince Edward Road West, Mongkok, Kowloon, Hong Kong  
Tel: +852-2265-6688, Fax: +852-2886-9022

**Renesas Electronics Taiwan Co., Ltd.**  
13F, No. 363, Fu Shing North Road, Taipei 10543, Taiwan  
Tel: +886-2-8175-9600, Fax: +886-2-8175-9670

**Renesas Electronics Singapore Pte. Ltd.**  
80 Bendemeer Road, Unit #06-02 Hyflux Innovation Centre, Singapore 339949  
Tel: +65-6213-0200, Fax: +65-6213-0300

**Renesas Electronics Malaysia Sdn.Bhd.**  
Unit 1207, Block B, Menara Amcorp, Amcorp Trade Centre, No. 18, Jln Persiaran Barat, 46050 Petaling Jaya, Selangor Darul Ehsan, Malaysia  
Tel: +60-3-7955-9390, Fax: +60-3-7955-9510

**Renesas Electronics India Pvt. Ltd.**  
No.777C, 100 Feet Road, HAL 2nd Stage, Indiranagar, Bangalore 560 038, India  
Tel: +91-80-67208700, Fax: +91-80-67208777

**Renesas Electronics Korea Co., Ltd.**  
17F, KAMCO Yangjae Tower, 262, Gangnam-daero, Gangnam-gu, Seoul, 06265 Korea  
Tel: +82-2-558-3737, Fax: +82-2-558-5338