

# R9A02G021

Fast Prototyping Board for R9A02G021 Microcontroller  
FPB-R9A02G021  
User's Manual

All information contained in these materials, including products and product specifications, represents information on the product at the time of publication and is subject to change by Renesas Electronics Corp. without notice. Please review the latest information published by Renesas Electronics Corp. through various means, including the Renesas Electronics Corp. website (<http://www.renesas.com>).

## Notice

1. Descriptions of circuits, software and other related information in this document are provided only to illustrate the operation of semiconductor products and application examples. You are fully responsible for the incorporation or any other use of the circuits, software, and information in the design of your product or system. Renesas Electronics disclaims any and all liability for any losses and damages incurred by you or third parties arising from the use of these circuits, software, or information.
2. Renesas Electronics hereby expressly disclaims any warranties against and liability for infringement or any other claims involving patents, copyrights, or other intellectual property rights of third parties, by or arising from the use of Renesas Electronics products or technical information described in this document, including but not limited to, the product data, drawings, charts, programs, algorithms, and application examples.
3. No license, express, implied or otherwise, is granted hereby under any patents, copyrights or other intellectual property rights of Renesas Electronics or others.
4. You shall be responsible for determining what licenses are required from any third parties, and obtaining such licenses for the lawful import, export, manufacture, sales, utilization, distribution or other disposal of any products incorporating Renesas Electronics products, if required.
5. You shall not alter, modify, copy, or reverse engineer any Renesas Electronics product, whether in whole or in part. Renesas Electronics disclaims any and all liability for any losses or damages incurred by you or third parties arising from such alteration, modification, copying or reverse engineering.
6. Renesas Electronics products are classified according to the following two quality grades: "Standard" and "High Quality". The intended applications for each Renesas Electronics product depends on the product's quality grade, as indicated below.

"Standard": Computers; office equipment; communications equipment; test and measurement equipment; audio and visual equipment; home electronic appliances; machine tools; personal electronic equipment; industrial robots; etc.

"High Quality": Transportation equipment (automobiles, trains, ships, etc.); traffic control (traffic lights); large-scale communication equipment; key financial terminal systems; safety control equipment; etc.

Unless expressly designated as a high reliability product or a product for harsh environments in a Renesas Electronics data sheet or other Renesas Electronics document, Renesas Electronics products are not intended or authorized for use in products or systems that may pose a direct threat to human life or bodily injury (artificial life support devices or systems; surgical implantations; etc.), or may cause serious property damage (space system; undersea repeaters; nuclear power control systems; aircraft control systems; key plant systems; military equipment; etc.). Renesas Electronics disclaims any and all liability for any damages or losses incurred by you or any third parties arising from the use of any Renesas Electronics product that is inconsistent with any Renesas Electronics data sheet, user's manual or other Renesas Electronics document.
7. No semiconductor product is absolutely secure. Notwithstanding any security measures or features that may be implemented in Renesas Electronics hardware or software products, Renesas Electronics shall have absolutely no liability arising out of any vulnerability or security breach, including but not limited to any unauthorized access to or use of a Renesas Electronics product or a system that uses a Renesas Electronics product. RENESAS ELECTRONICS DOES NOT WARRANT OR GUARANTEE THAT RENESAS ELECTRONICS PRODUCTS, OR ANY SYSTEMS CREATED USING RENESAS ELECTRONICS PRODUCTS WILL BE INVULNERABLE OR FREE FROM CORRUPTION, ATTACK, VIRUSES, INTERFERENCE, HACKING, DATA LOSS OR THEFT, OR OTHER SECURITY INTRUSION ("Vulnerability Issues"). RENESAS ELECTRONICS DISCLAIMS ANY AND ALL RESPONSIBILITY OR LIABILITY ARISING FROM OR RELATED TO ANY VULNERABILITY ISSUES. FURTHERMORE, TO THE EXTENT PERMITTED BY APPLICABLE LAW, RENESAS ELECTRONICS DISCLAIMS ANY AND ALL WARRANTIES, EXPRESS OR IMPLIED, WITH RESPECT TO THIS DOCUMENT AND ANY RELATED OR ACCOMPANYING SOFTWARE OR HARDWARE, INCLUDING BUT NOT LIMITED TO THE IMPLIED WARRANTIES OF MERCHANTABILITY, OR FITNESS FOR A PARTICULAR PURPOSE.
8. When using Renesas Electronics products, refer to the latest product information (data sheets, user's manuals, application notes, "General Notes for Handling and Using Semiconductor Devices" in the reliability handbook, etc.), and ensure that usage conditions are within the ranges specified by Renesas Electronics with respect to maximum ratings, operating power supply voltage range, heat dissipation characteristics, installation, etc. Renesas Electronics disclaims any and all liability for any malfunctions, failure or accident arising out of the use of Renesas Electronics products outside of such specified ranges.
9. Although Renesas Electronics endeavors to improve the quality and reliability of Renesas Electronics products, semiconductor products have specific characteristics, such as the occurrence of failure at a certain rate and malfunctions under certain use conditions. Unless designated as a high reliability product or a product for harsh environments in a Renesas Electronics data sheet or other Renesas Electronics document, Renesas Electronics products are not subject to radiation resistance design. You are responsible for implementing safety measures to guard against the possibility of bodily injury, injury or damage caused by fire, and/or danger to the public in the event of a failure or malfunction of Renesas Electronics products, such as safety design for hardware and software, including but not limited to redundancy, fire control and malfunction prevention, appropriate treatment for aging degradation or any other appropriate measures. Because the evaluation of microcomputer software alone is very difficult and impractical, you are responsible for evaluating the safety of the final products or systems manufactured by you.
10. Please contact a Renesas Electronics sales office for details as to environmental matters such as the environmental compatibility of each Renesas Electronics product. You are responsible for carefully and sufficiently investigating applicable laws and regulations that regulate the inclusion or use of controlled substances, including without limitation, the EU RoHS Directive, and using Renesas Electronics products in compliance with all these applicable laws and regulations. Renesas Electronics disclaims any and all liability for damages or losses occurring as a result of your noncompliance with applicable laws and regulations.
11. Renesas Electronics products and technologies shall not be used for or incorporated into any products or systems whose manufacture, use, or sale is prohibited under any applicable domestic or foreign laws or regulations. You shall comply with any applicable export control laws and regulations promulgated and administered by the governments of any countries asserting jurisdiction over the parties or transactions.
12. It is the responsibility of the buyer or distributor of Renesas Electronics products, or any other party who distributes, disposes of, or otherwise sells or transfers the product to a third party, to notify such third party in advance of the contents and conditions set forth in this document.
13. This document shall not be reprinted, reproduced or duplicated in any form, in whole or in part, without prior written consent of Renesas Electronics.
14. Please contact a Renesas Electronics sales office if you have any questions regarding the information contained in this document or Renesas Electronics products.

(Note1) "Renesas Electronics" as used in this document means Renesas Electronics Corporation and also includes its directly or indirectly controlled subsidiaries.

(Note2) "Renesas Electronics product(s)" means any product developed or manufactured by or for Renesas Electronics.

(Rev.5.0-1 October 2020)

## Corporate Headquarters

TOYOSU FORESIA, 3-2-24 Toyosu,  
Koto-ku, Tokyo 135-0061, Japan

[www.renesas.com](http://www.renesas.com)

## Trademarks

Renesas and the Renesas logo are trademarks of Renesas Electronics Corporation. All trademarks and registered trademarks are the property of their respective owners.

## Contact information

For further information on a product, technology, the most up-to-date version of a document, or your nearest sales office, please visit:

[www.renesas.com/contact/](http://www.renesas.com/contact/).

# General Precautions in the Handling of Microprocessing Unit and Microcontroller Unit Products

The following usage notes are applicable to all Microprocessing unit and Microcontroller unit products from Renesas. For detailed usage notes on the products covered by this document, refer to the relevant sections of the document as well as any technical updates that have been issued for the products.

- 1. Precaution against Electrostatic Discharge (ESD)**

A strong electrical field, when exposed to a CMOS device, can cause destruction of the gate oxide and ultimately degrade the device operation. Steps must be taken to stop the generation of static electricity as much as possible, and quickly dissipate it when it occurs. Environmental control must be adequate. When it is dry, a humidifier should be used. This is recommended to avoid using insulators that can easily build up static electricity. Semiconductor devices must be stored and transported in an anti-static container, static shielding bag or conductive material. All test and measurement tools including work benches and floors must be grounded. The operator must also be grounded using a wrist strap. Semiconductor devices must not be touched with bare hands. Similar precautions must be taken for printed circuit boards with mounted semiconductor devices.
- 2. Processing at power-on**

The state of the product is undefined at the time when power is supplied. The states of internal circuits in the LSI are indeterminate and the states of register settings and pins are undefined at the time when power is supplied. In a finished product where the reset signal is applied to the external reset pin, the states of pins are not guaranteed from the time when power is supplied until the reset process is completed. In a similar way, the states of pins in a product that is reset by an on-chip power-on reset function are not guaranteed from the time when power is supplied until the power reaches the level at which resetting is specified.
- 3. Input of signal during power-off state**

Do not input signals or an I/O pull-up power supply while the device is powered off. The current injection that results from input of such a signal or I/O pull-up power supply may cause malfunction and the abnormal current that passes in the device at this time may cause degradation of internal elements. Follow the guideline for input signal during power-off state as described in your product documentation.
- 4. Handling of unused pins**

Handle unused pins in accordance with the directions given under handling of unused pins in the manual. The input pins of CMOS products are generally in the high-impedance state. In operation with an unused pin in the open-circuit state, extra electromagnetic noise is induced in the vicinity of the LSI, an associated shoot-through current flows internally, and malfunctions occur due to the false recognition of the pin state as an input signal become possible.
- 5. Clock signals**

After applying a reset, only release the reset line after the operating clock signal becomes stable. When switching the clock signal during program execution, wait until the target clock signal is stabilized. When the clock signal is generated with an external resonator or from an external oscillator during a reset, ensure that the reset line is only released after full stabilization of the clock signal. Additionally, when switching to a clock signal produced with an external resonator or by an external oscillator while program execution is in progress, wait until the target clock signal is stable.
- 6. Voltage application waveform at input pin**

Waveform distortion due to input noise or a reflected wave may cause malfunction. If the input of the CMOS device stays in the area between  $V_{IL}$  (Max.) and  $V_{IH}$  (Min.) due to noise, for example, the device may malfunction. Take care to prevent chattering noise from entering the device when the input level is fixed, and also in the transition period when the input level passes through the area between  $V_{IL}$  (Max.) and  $V_{IH}$  (Min.).
- 7. Prohibition of access to reserved addresses**

Access to reserved addresses is prohibited. The reserved addresses are provided for possible future expansion of functions. Do not access these addresses as the correct operation of the LSI is not guaranteed.
- 8. Differences between products**

Before changing from one product to another, for example to a product with a different part number, confirm that the change will not lead to problems. The characteristics of a Microprocessing unit or microcontroller unit products in the same group but having a different part number might differ in terms of internal memory capacity, layout pattern, and other factors, which can affect the ranges of electrical characteristics, such as characteristic values, operating margins, immunity to noise, and amount of radiated noise. When changing to a product with a different part number, implement a system evaluation test for the given product.

## Renesas FPB-R9A02G021 Disclaimer

By using this FPB-R9A02G021, the User accepts the following terms, which are in addition to, and control in the event of disagreement, with Renesas' General Terms and Conditions available at [renesas.com/legal-notices](https://www.renesas.com/legal-notices).

The FPB-R9A02G021 is not guaranteed to be error free, and the entire risk as to the results and performance of the FPB-R9A02G021 is assumed by the User. The FPB-R9A02G021 is provided by Renesas on an "as is" basis without warranty of any kind whether express or implied, including but not limited to the implied warranties of good workmanship, fitness for a particular purpose, title, merchantability, and non-infringement of intellectual property rights. Renesas expressly disclaims any implied warranty.

Renesas does not consider the FPB-R9A02G021 to be a finished product and therefore the FPB-R9A02G021 may not comply with some requirements applicable to finished products, including, but not limited to recycling, restricted substances and electromagnetic compatibility regulations. Refer to Certifications section, for information about certifications and compliance information for the FPB-R9A02G021. It is the kit User's responsibility to make sure the kit meets any local requirements applicable to their region.

Renesas or its affiliates shall in no event be liable for any loss of profit, loss of data, loss of contract, loss of business, damage to reputation or goodwill, any economic loss, any reprogramming or recall costs (whether the foregoing losses are direct or indirect) nor shall Renesas or its affiliates be liable for any other direct or indirect special, incidental or consequential damages arising out of or in relation to the use of this FPB-R9A02G021, even if Renesas or its affiliates have been advised of the possibility of such damages.

Renesas has used reasonable care in preparing the information included in this document, but Renesas does not warrant that such information is error free nor does Renesas guarantee an exact match for every application or parameter to part numbers designated by other vendors listed herein. The information provided in this document is intended solely to enable the use of Renesas products. No express or implied license to any intellectual property right is granted by this document or in connection with the sale of Renesas products. Renesas reserves the right to make changes to specifications and product descriptions at any time without notice. Renesas assumes no liability for any damages incurred by you resulting from errors in or omissions from the information included herein. Renesas cannot verify, and assumes no liability for, the accuracy of information available on another company's website.

## Precautions

This Fast Prototyping Board is only intended for use in a laboratory environment under ambient temperature and humidity conditions. A safe separation distance should be used between this and any sensitive equipment. Its use outside the laboratory, classroom, study area, or similar such area invalidates conformity with the protection requirements of the Electromagnetic Compatibility Directive and could lead to prosecution.

The product generates, uses, and can radiate radio frequency energy and may cause harmful interference to radio communications. There is no guarantee that interference will not occur in a particular installation. If this equipment causes harmful interference to radio or television reception, which can be determined by turning the equipment off or on, you are encouraged to try to correct the interference by one or more of the following measures:

- Ensure attached cables do not lie across the equipment.
- Reorient the receiving antenna.
- Increase the distance between the equipment and the receiver.
- Connect the equipment into an outlet on a circuit different from that which the receiver is connected.
- Power down the equipment when not in use.
- Consult the dealer or an experienced radio/TV technician for help.

Note: It is recommended that wherever possible shielded interface cables are used.

The product is potentially susceptible to certain EMC phenomena. To mitigate against them it is recommended that the following measures be undertaken:

- The user is advised that mobile phones should not be used within 10 m of the product when in use.
- The user is advised to take ESD precautions when handling the equipment.

The Evaluation Kit does not represent an ideal reference design for an end product and does not fulfil the regulatory standards for an end product.

## Proprietary Notice

All text, graphics, photographs, trademarks, logos, artwork, and computer code, collectively known as content, contained in this document is owned, controlled, or licensed by or to Renesas, and is protected by trade dress, copyright, patent and trademark laws, and other intellectual property rights and unfair competition laws. Except as expressly provided herein, no part of this document or content may be copied, reproduced, republished, posted, publicly displayed, encoded, translated, transmitted, or distributed in any other medium for publication or distribution or for any commercial enterprise, without prior written consent from Renesas.

SeeedGrove® is a registered trademark of Seeed Technology Inc.

"Pmod™" is the trademark of Digilent Inc. The Pmod Interface Specification is the property of Digilent Inc. For more information on the use of the Pmod trademark, please see our [Pmod License Agreement](#) page.

Arduino® is a registered trademark of Arduino SA.

Other brands and names mentioned in this document may be the trademarks or registered trademarks of their respective holders.

# FPB-R9A02G021 User's Manual

## Contents

Glossary .....	4
1. Board Overview .....	5
1.1 Assumptions and Advisory Notes.....	6
2. Box Contents .....	7
3. Ordering Information.....	7
4. Hardware Architecture and Default Configuration .....	8
4.1 Board Architecture.....	8
4.2 Block Diagram .....	8
4.3 Component Placement Location and Dimension .....	9
4.4 Jumper Settings.....	11
4.4.1 Copper Jumpers .....	11
4.4.2 Traditional Pin Header Jumpers.....	11
4.4.3 Default Jumper Configuration.....	11
5. System Control and Ecosystem Access.....	19
5.1 Power .....	19
5.1.1 Power Supply Options.....	19
5.1.2 Power Supply Considerations .....	20
5.1.3 Power-up Behavior .....	20
5.2 Debug and Programming .....	21
5.2.1 J-Link OB debug probe .....	22
5.2.2 External debug probe .....	23
5.2.3 Settings in e <sup>2</sup> studio and Renesas Flash Programmer .....	25
5.3 Ecosystem .....	26
5.3.1 Seeed Grove® Connector .....	28
5.3.2 Digilent Pmod™ Connectors .....	29
5.3.3 Arduino® Connector.....	33
5.4 Miscellaneous.....	35
5.4.1 LED.....	35
5.4.2 User and Reset Switches .....	36
5.4.3 MCU Boot Mode .....	37
6. Special Feature Access .....	38
6.1 Remote Control Signal Receiver .....	38
7. MCU Native Pin Access.....	39

7.1	Breakout Pin Headers .....	39
7.2	MCU Current Measurement .....	39
8.	Certifications.....	40
8.1	EMC/EMI Standards.....	40
8.2	Material Selection, Waste, Recycling and Disposal Standards .....	40
8.3	Safety Standards .....	40
9.	Design and Manufacturing Information .....	41
10.	Website and Support .....	41
	Revision History .....	42

## Figures

Figure 1.	FPB-R9A02G021 Board Top Side .....	6
Figure 2.	FPB-R9A02G021 Board Bottom Side .....	6
Figure 3.	FPB-R9A02G021 Board.....	7
Figure 4.	FPB-R9A02G021 Board Block Diagram .....	8
Figure 5.	Reference number for components on the FPB-R9A02G021 board (top side).....	9
Figure 6.	Reference number for components on the FPB-R9A02G021 board (bottom side).....	9
Figure 7.	Dimensional drawing .....	10
Figure 8.	Copper Jumpers.....	11
Figure 9.	Power Supply Options.....	19
Figure 10.	FPB-R9A02G021 Debug Interface.....	21
Figure 11.	Connector for external debug probe .....	23
Figure 12.	e <sup>2</sup> Studio Settings.....	25
Figure 13.	Renesas Flash Programmer Settings .....	25
Figure 14.	Seeed Grove Connector.....	28
Figure 15.	Seeed Grove Copper Jumpers (bottom side) .....	28
Figure 16.	Pmod 1 Connector .....	29
Figure 17.	Pmod 1 Copper Jumpers (bottom side) .....	30
Figure 18.	Pmod 2 Connector .....	31
Figure 19.	Pmod 2 Copper Jumpers (bottom side) .....	32
Figure 20.	Pmod 2 INT / GPIO Selection Resistor (top side).....	32
Figure 21.	Arduino Uno Connectors .....	34
Figure 22.	Arduino Uno Copper Jumpers (bottom side).....	34
Figure 23.	User LEDs .....	35
Figure 24.	Power LED and Debug LED.....	35
Figure 25.	User LEDs Copper Jumpers (bottom side) .....	36
Figure 26.	Reset (S2) and User Switch (S1) .....	36
Figure 27.	User Switch S1 Copper Jumper (bottom side).....	37
Figure 28.	Boot Mode Jumper (J8).....	37

Figure 29. IR Receiver Module .....	38
Figure 30. Breakout Pin Headers J1 and J2.....	39
Figure 31. MCU +3.3 V Current Measurement Circuit .....	39
Figure 32. MCU +3.3 V Current Measurement Pin Header J3 and R49 .....	39

## Tables

Table 1. List of Abbreviations and Acronyms .....	4
Table 2. Board Architecture .....	8
Table 3. Default Jumper Settings for the MCU.....	12
Table 4. Default Jumper Settings for J-Link OB and external debug probe .....	13
Table 5. Default Jumper Settings for Arduino Uno .....	14
Table 6. Default Jumper Settings for Pmod 1.....	16
Table 7. Default Jumper Settings for Pmod 2.....	17
Table 8. Default Jumper Settings for Grove .....	18
Table 9. Default Jumper Settings for HMI Features .....	18
Table 10. Debug Mode .....	21
Table 11. Jumper Configuration for Debugging and Programming.....	21
Table 12. USB Debug Connector .....	22
Table 13. External debug probe Connection .....	24
Table 14. MCU and Ecosystem Connection.....	27
Table 15. Seeed Grove Connector .....	28
Table 16. Pmod 1 Connector.....	29
Table 17. Pmod 2 Connector.....	31
Table 18. Arduino Uno Connections.....	33
Table 19. FPB-FPB-R9A02G021 Board LED Functions .....	35
Table 20. FPB-R9A02G021 Board Switches .....	36
Table 21. Remote Control Signal Receiver .....	38
Table 22. FPB-R9A02G021 Board Design Package Contents .....	41

## Glossary

**Table 1. List of Abbreviations and Acronyms**

ADC	Analog to Digital Converter
BoM	Bill of Materials
CS	Chip Select
CTS	Clear to Send
EMC	Electro Magnetic Compatibility
EMI	Electro Magnetic Interference
EU	European Union
FPB	Fast Prototyping Board
GPIO	General Purpose Input Output
HWQFN	WQFN with Heat Sink
I <sup>2</sup> C (or IIC)	Inter-Integrated Circuit
IDE	Integrated Development Environment
INT	Interrupt
I/O	Input/Output
IRQ	Interrupt Request
LED	Light Emitting Diode
MCU	Micro Controller Unit
MISO	Master In Slave Out
MOSI	Master Out Slave In
NC	Not Connected
PWM	Pulse Width Modulation
QFN	Quad Flat No Lead Package
REMC	Remote Control Signal Receiver
RTC	Real Time Clock
RTS	Request to Send
RXD	Receive Data
SAU	Serial Array Unit
SCK	Serial Clock
SCL	Serial Clock Line
SDA	Serial Data Line
SMD	Surface Mount Device
SPI	Serial Peripheral Interface
SRAM	Static Random Access Memory
TAU	Timer Array Unit
TP	Test Point
TXD	Transmit Data
UART	Universal Asynchronous Receiver Transmitter
USB	Universal Serial Bus
WQFN	Very-Very thin QFN

## 1. Board Overview

The FPB-R9A02G021, a Fast Prototyping Board for the R9A02G021 MCU, enables users to seamlessly evaluate the features of the R9A02G021 MCU and develop embedded systems applications using the e<sup>2</sup> studio IDE. The on-board features along with a choice of popular ecosystem add-on modules brings user's big ideas to life.

The key features of the FPB-R9A02G021 board are categorized in three groups as follows:

### MCU Native Pin Access

- R9A02G0214CNE MCU (referred to as MCU)
- Max 48 MHz, RISC-V core
- 128 KB Code Flash, 4 KB Data Flash, 16 KB SRAM
- 48-pin, HWQFN package
- Native pin access through 2 x 24-pin male headers (not fitted)
- MCU current measurement point for precision current consumption measurement (not fitted)
- MCU internal clock
- Providing 32.768 kHz reference clock

### Special Feature Access

- Remote Control Signal Receiver (not fitted)

### System Control and Ecosystem Access

- Two +5 V input sources
  - USB
  - External power supply (using 2-pin header [not fitted])
- Built-in SEGGER J-Link OB debug probe (cJTAG: 2-wire compact JTAG)
- User LEDs and switches
  - Two User LEDs (green)
  - Power LED (green) indicating availability of regulated power
  - Debug LED (yellow) indicating the debug connection
  - One User switch
  - One Reset switch
- Three popular ecosystem expansions
  - Seeed Grove<sup>®</sup> (I<sup>2</sup>C, Analog) connector (not fitted)
  - Two Digilent Pmod<sup>™</sup> connectors
    - Pmod 1: Type-2A (expanded SPI), Type-3A (expanded UART) and Type-6A (expanded I<sup>2</sup>C)
    - Pmod 2: Type-3A (expanded UART) and Type-6A (expanded I<sup>2</sup>C)
  - Arduino<sup>®</sup> (Uno R3) connector
- MCU boot configuration jumper

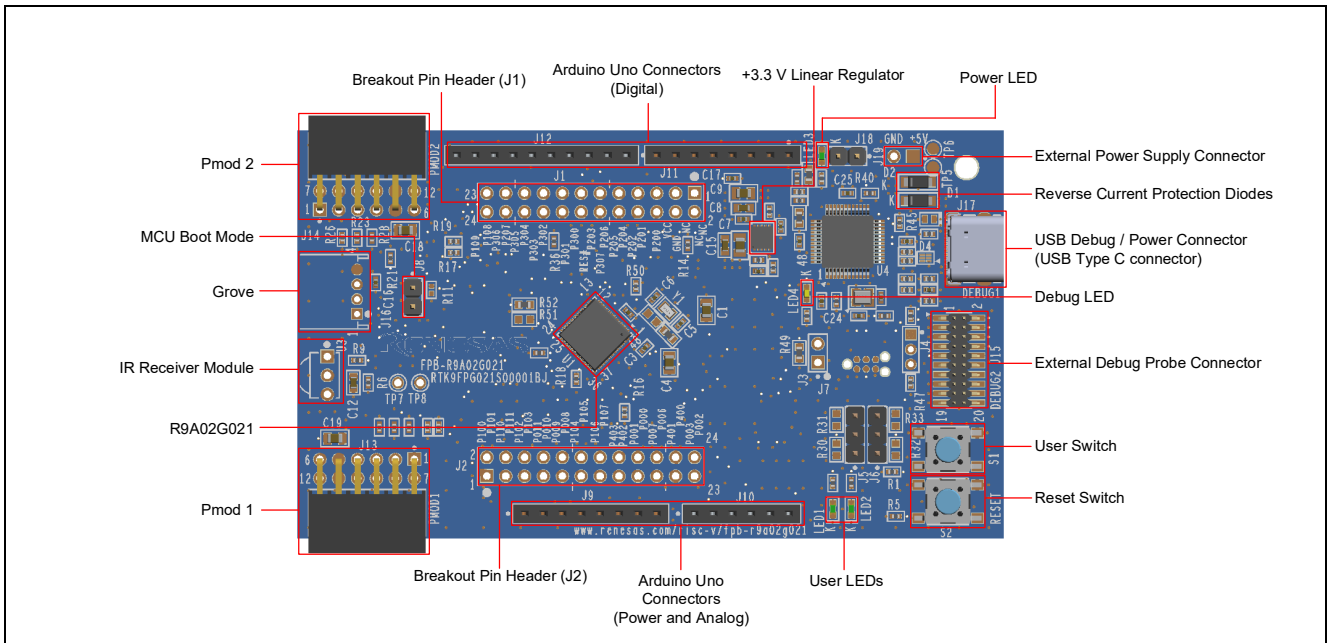


Figure 1. FPB-R9A02G021 Board Top Side

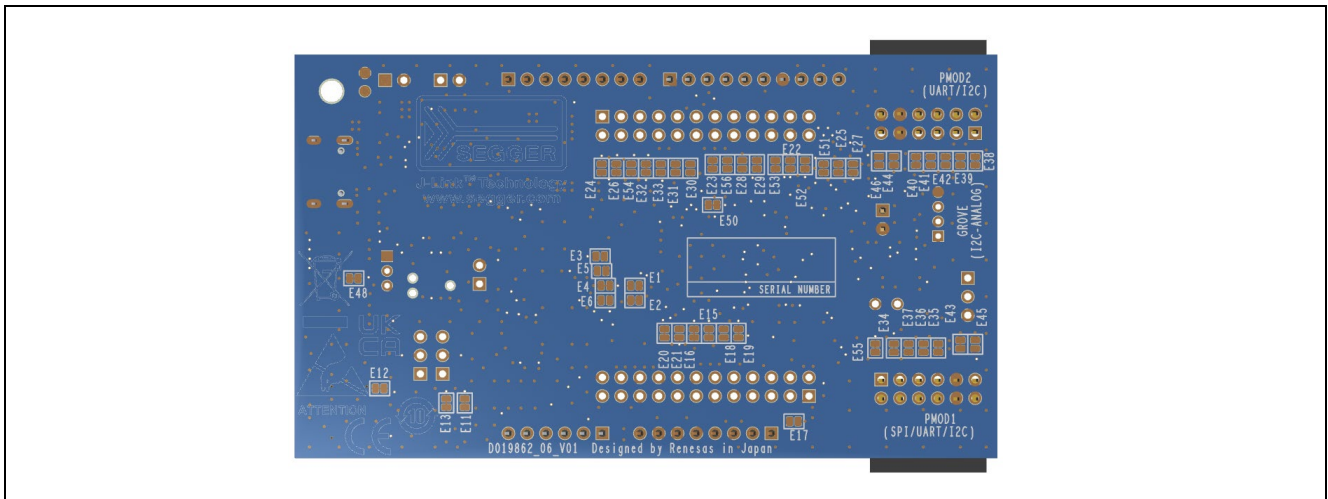


Figure 2. FPB-R9A02G021 Board Bottom Side

### 1.1 Assumptions and Advisory Notes

1. It is assumed that the user has a basic understanding of microcontrollers and embedded systems hardware.
2. An Integrated Development Environment (IDE) such as e<sup>2</sup> studio is required to develop embedded applications on FPB-R9A02G021 board.

## 2. Box Contents

The following components are included in the box:

1. FPB-R9A02G021 v1 board
2. Printed Quick Start Guide
3. Printed information for China RoHS

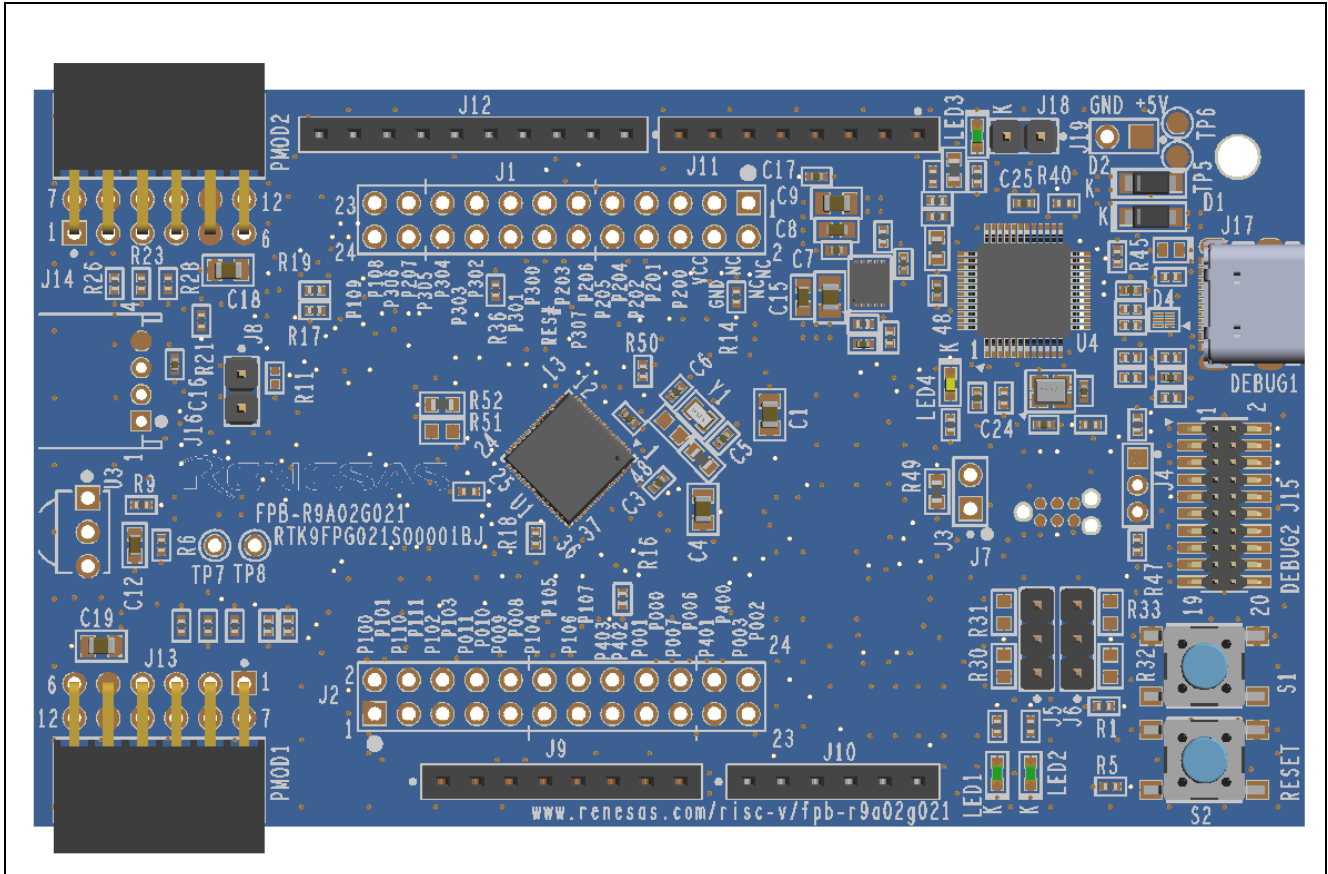


Figure 3. FPB-R9A02G021 Board

## 3. Ordering Information

- FPB-R9A02G021 v1 kit orderable part number: RTK9FPG021S00001BJ

Note: The underlined character in the orderable part number represents the kit version.

## 4. Hardware Architecture and Default Configuration

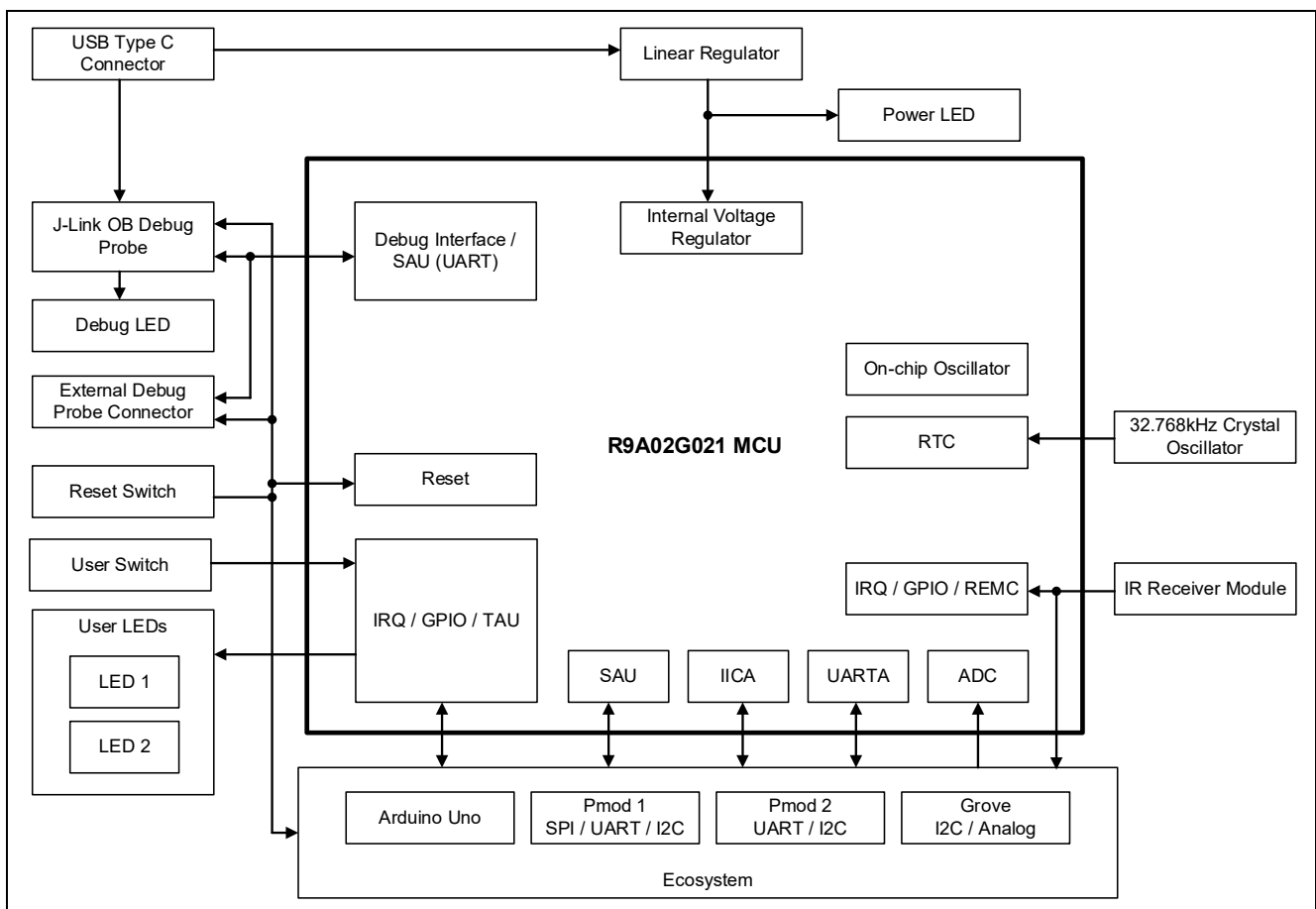
### 4.1 Board Architecture

The FPB-R9A02G021 board is designed with an architecture similar to other boards in the Renesas FPB series. Alongside the MCU there is an on-board debug probe, pin headers for access to all the pins on the MCU, a power supply regulator, some LEDs and switches, and several ecosystem I/O connectors (Grove, Pmod and Arduino).

**Table 2. Board Architecture**

Board Functionality	Features	Function present on all similar boards	Functionality is:
MCU Native Pin Access	MCU, breakout pin headers for all MCU I/O and power (not fitted), 2-pin header for MCU current measurement (not fitted)	Yes	MCU dependent
Special Feature Access	MCU special features: Remote control signal receiver (not fitted)	Optional	MCU dependent
System Control and Ecosystem Access	Power, debugger, user LEDs and switch, reset switch, ecosystem connectors, boot configuration	Yes	Same or similar across other FPB boards

### 4.2 Block Diagram



**Figure 4. FPB-R9A02G021 Board Block Diagram**

### 4.3 Component Placement Location and Dimension

Reference number for components on the FPB-R9A02G021 board is shown below.

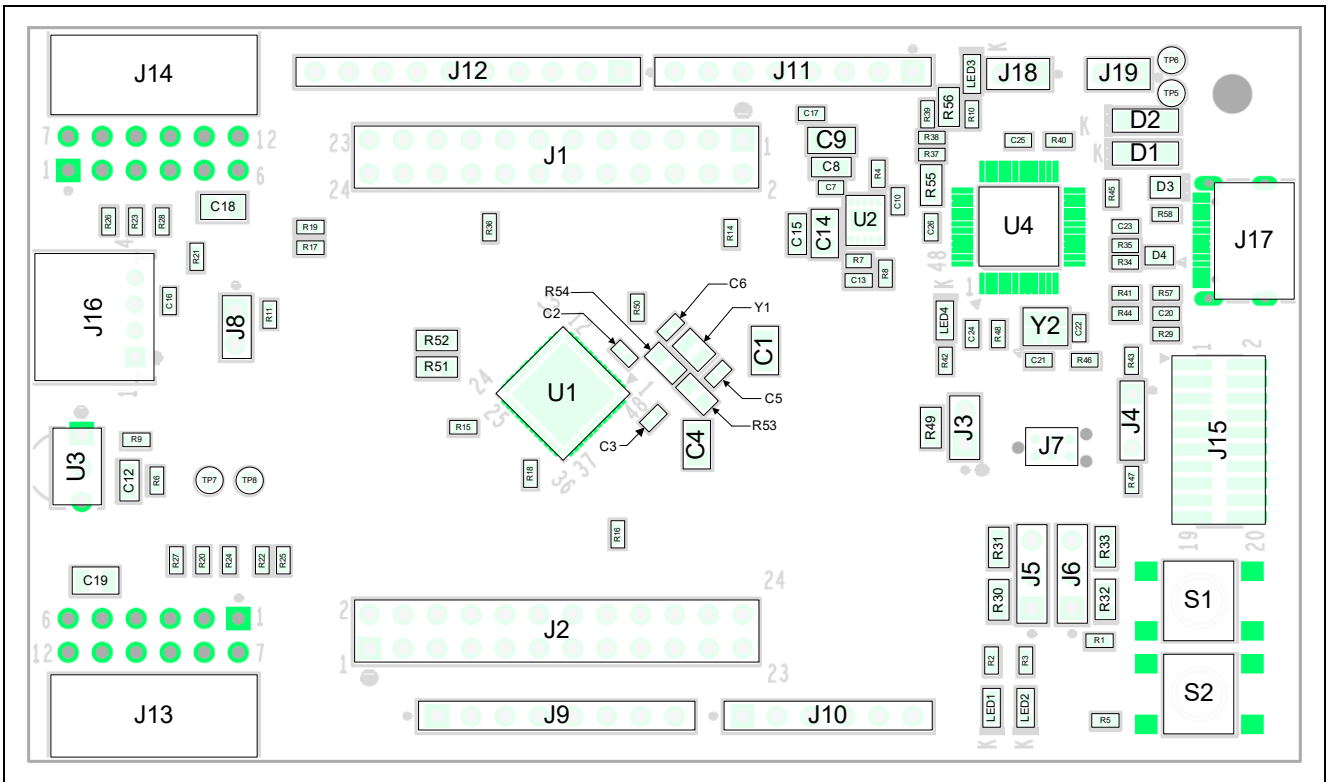


Figure 5. Reference number for components on the FPB-R9A02G021 board (top side)

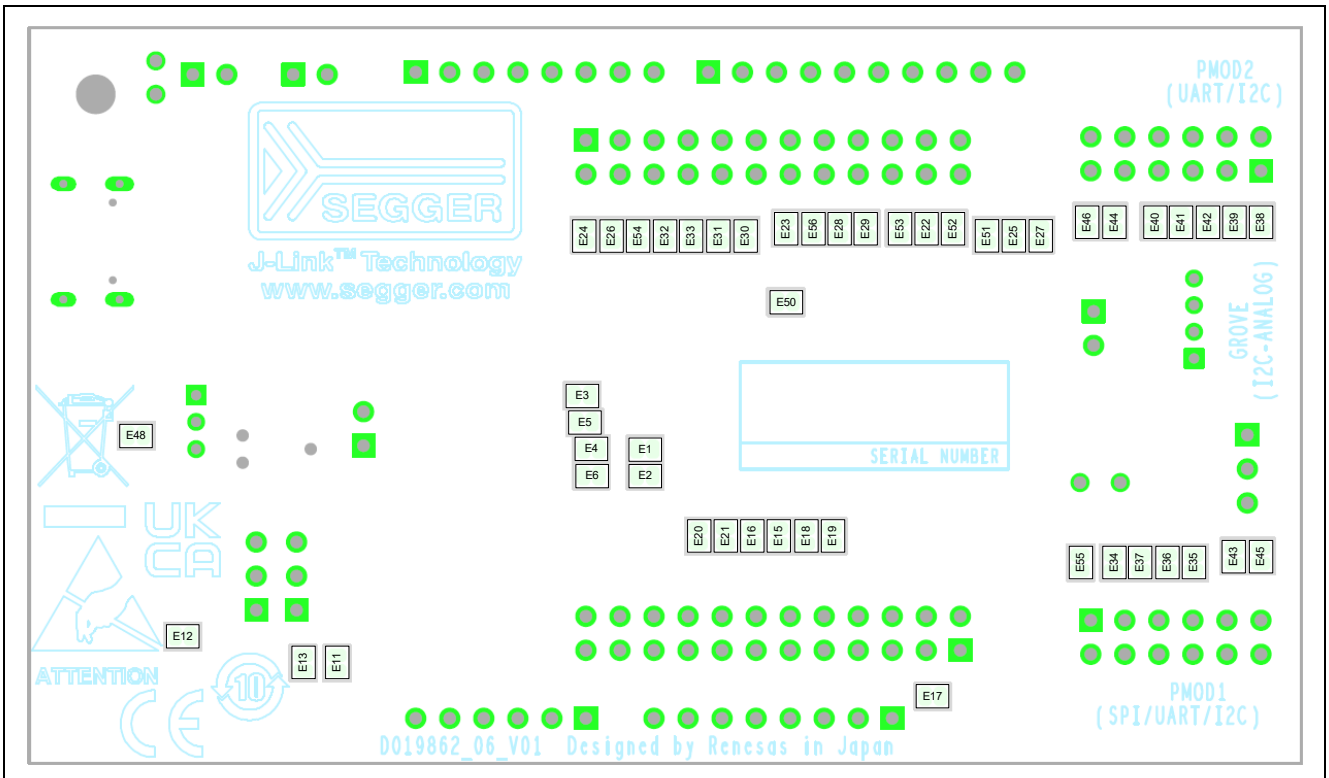


Figure 6. Reference number for components on the FPB-R9A02G021 board (bottom side)



## 4.4 Jumper Settings

Two types of jumpers are provided on the FPB-R9A02G021 board.

1. Copper jumpers (trace-cut type and solder-bridge type)
2. Traditional pin header jumpers

The following sections describe each type and their default configuration.

### 4.4.1 Copper Jumpers

Copper jumpers are of two types, designated **trace-cut** and **solder-bridge**.

A **trace-cut jumper** is provided with a narrow copper trace connecting its pads. To isolate the pads, cut the trace between pads adjacent to each pad, then remove the connecting copper foil either mechanically or with the assistance of heat. Once the etched copper trace is removed, the trace-cut jumper is turned into a solder-bridge jumper for any later changes.

A **solder-bridge** jumper is provided with two isolated pads that may be joined together by one of three methods:

- Solder may be applied to both pads to develop a bulge on each and the bulges joined by touching a soldering iron across the two pads.
- A small wire may be placed across the two pads and soldered in place.
- A SMD resistor may be placed across the two pads and soldered in place. A zero-ohm resistor shorts the pads together.

For any copper jumper, the connection is considered **closed** if there is an electrical connection between the pads (default for trace-cut jumpers.) The connection is considered **open** if there is no electrical connection between the pads (default for the solder-bridge jumpers).

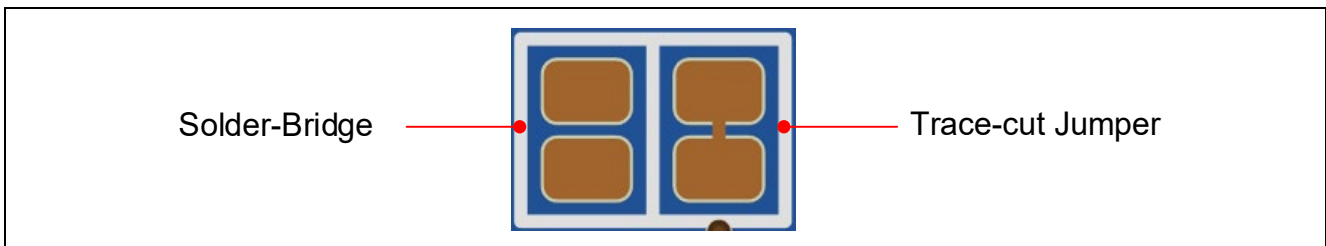


Figure 8. Copper Jumpers

### 4.4.2 Traditional Pin Header Jumpers

These jumpers are traditional small pitch jumpers that require an external shunt to open/close them. The traditional pin jumpers on the FPB-R9A02G021 board are 0.1" (2.54 mm) pitch headers and require compatible 2.54 mm shunt jumpers.

### 4.4.3 Default Jumper Configuration

The following table describes the default settings for each jumper on the FPB-R9A02G021 board. This includes copper jumpers (Ex designation) and traditional pin jumpers (Jx designation). This also includes some 0Ω resistors (Rx designation) because the resistors are used as jumper function.

The circuit group for each jumper is the designation found in the board schematic (available in the Design Package). Functional details for many of the listed jumpers may be found in sections associated with each functional area of the kits.

Table 3. Default Jumper Settings for the MCU

Location	Circuit Group	Default (Open / Closed) (Fitted / Not fitted)	Function
E1	MCU	Open	Closed: P003 (AVREFM) connects to breakout pin header J2. (Remove capacitor C3 at closed)
			Open: P003 (AVREFM) disconnects from breakout pin header J2.
E2	MCU	Closed	Closed: P003 (AVREFM) connects to GND.
			Open: P003 (AVREFM) disconnects from GND.
E3	MCU	Open	Closed: P002 (AVREFP) connects to +3V3_MCU.
			Open: P002 (AVREFP) disconnects from +3V3_MCU.
E4	MCU	Closed	Closed: P002 (AVREFP) connects to +3.3 V.
			Open: P002 (AVREFP) disconnects from +3.3 V.
E5	MCU	Open	Closed: P002 (AVREFP) connects to Arduino Uno (AREF).
			Open: P002 (AVREFP) disconnects from Arduino Uno (AREF).
E6	MCU	Open	Closed: P002 (AVREFP) connects to breakout pin header J2. (Remove capacitor C3 at closed)
			Open: P002 (AVREFP) disconnects from breakout pin header J2.
J8	MCU BOOT MODE	Open	Closed: The MCU is configured for UART boot mode.
			Open: The MCU is configured for single chip mode.
R49	MCU CURRENT MEASUREMENT	Fitted	Fitted: +3.3 V connects to the MCU.
			Not fitted: The MCU current can be measured over this jumper.

Table 4. Default Jumper Settings for J-Link OB and external debug probe

Location	Circuit Group	Default (Open / Closed) (Fitted / Not fitted)	Function
J18	J-Link OB	Open	Closed: J-Link OB debug probe is held in reset. (R9A02G021 MCU free-running operation.)
			Open: J-Link OB debug probe is enabled.
E50	External debug probe, J-Link OB	Closed	Closed: P300 (TCKC) connects to the connector for external debug probe J15 (TCKC) and J-Link OB debug probe.
			Open: P300 (TCKC) disconnects from the connector for external debug probe J15 (TCKC) and J-Link OB debug probe.
E56	External debug probe, J-Link OB	Closed	Closed: P303 (RXD0_B) connects to the connector for external debug probe J15 (RXD) and J-Link OB debug probe.
			Open: P303(TO04) can be connected to Arduino Uno (D10 / SS / PWM) by closing the copper jumper E28.
J5	External debug probe, J-Link OB	Jumper on pins 2-3	Jumper on pins 2-3: The MCU connects to a host PC by Virtual COM (VCOM).
			Jumper on pins 1-2: The external debug probe connection is selected (for Debug in or UART Boot via external debug probe mode).
J6	External debug probe, J-Link OB	Jumper on pins 2-3	Jumper on pins 2-3: The MCU connects to a host PC by Virtual COM (VCOM).
			Jumper on pins 1-2: The external debug probe connection is selected (for Debug in or UART Boot via external debug probe mode).
J4	J-Link OB	Not fitted	Do not fit and use this jumper.
E48	External Debugger	Closed	Do not open this copper jumper.

Table 5. Default Jumper Settings for Arduino Uno

Location	Circuit Group	Default (Open / Closed)	Function
E15	Arduino Uno	Closed	Closed: P105 (ANI18) connects to Arduino Uno (A4).
			Open: P105 (ANI18) disconnects from Arduino Uno (A4).
E16	Arduino Uno	Closed	Closed: P106 (ANI19) connects to Arduino Uno (A5).
			Open: P106 (ANI19) disconnects from Arduino Uno (A5).
E17	Arduino Uno	Open	Closed: +5 V connects to Arduino Uno (5V).
			Open: +5 V disconnects from Arduino Uno (5V).
E22	Arduino Uno	Closed	Closed: P102 (SI20) connects to Arduino Uno (D12 / MISO).
			Open: P102 (SI20) disconnects from Arduino Uno (D12 / MISO).
E23	Arduino Uno	Closed	Closed: P107 (TO03_A) connects to Arduino Uno (D9 / PWM).
			Open: P107 (TO03_A) disconnects from Arduino Uno (D9 / PWM).
E24	Arduino Uno	Open	Closed: +3.3V (pull-up) connects to Arduino Uno (D3 / INT / PWM).
			Open: +3.3V (pull-up) disconnects from Arduino Uno (D3 / INT / PWM).
E25	Arduino Uno	Closed	Closed: +3.3V (pull-up) connects to P011 (SCLA1) and P010 (SDAA1).
			Open: +3.3V (pull-up) disconnects from P011 (SCLA1) and P010 (SDAA1).
E26	Arduino Uno	Closed	Closed: P100 (IRQ6_C / TO05) connects to Arduino Uno (D3 / INT / PWM).
			Open: P100 (IRQ6_C / TO05) disconnects from Arduino Uno (D3 / INT / PWM).
E27	Arduino Uno	Open	Closed: +5 V (pull-up) connects to P011 (SCLA1) and P010 (SDAA1).
			Open: +5 V (pull-up) disconnects from P011 (SCLA1) and P010 (SDAA1).

Location	Circuit Group	Default (Open / Closed)	Function
E28	Arduino Uno	Open	Closed: P303 (TO04) connects to Arduino Uno (D10 / SS / PWM).
			Open: P303 (TO04) disconnects from Arduino Uno (D10 / SS / PWM).
E29	Arduino Uno	Closed	Closed: P009 connects to Arduino Uno (D10 / SS / PWM).
			Open: P009 disconnects from Arduino Uno (D10 / SS / PWM).
E30	Arduino Uno	Open	Closed: P011 (TO07_B) connects to Arduino Uno (D6 / PWM).
			Open: P011 (TO07_B) disconnects from Arduino Uno (D6 / PWM).
E31	Arduino Uno	Closed	Closed: P104 connects to Arduino Uno (D6 / PWM).
			Open: P104 disconnects from Arduino Uno (D6 / PWM).
E32	Arduino Uno	Closed	Closed: P402 connects to Arduino Uno (D5 / PWM).
			Open: P402 disconnects from Arduino Uno (D5 / PWM).
E33	Arduino Uno	Open	Closed: P102 (TO01) connects to Arduino Uno (D5 / PWM).
			Open: P102 (TO01) disconnects from Arduino Uno (D5 / PWM).
E51	Arduino Uno	Closed	Closed: P011 (SCLA1) connects to Arduino Uno (SCL).
			Open: P011 (SCLA1) disconnects from Arduino Uno (SCL).
E52	Arduino Uno	Closed	Closed: P101 (SCK20) connects to Arduino Uno (D13 / SCK).
			Open: P101 (SCK20) disconnects from Arduino Uno (D13 / SCK).
E53	Arduino Uno	Closed	Closed: P103 (SO20 / TO02_A) connects to Arduino Uno (D11 / MOSI / PWM).
			Open: P103 (SO20 / TO02_A) disconnects from Arduino Uno (D11 / MOSI / PWM).
E54	Arduino Uno	Open	Closed: P207 connects to Arduino Uno (D4).
			Open: P207 disconnects from Arduino Uno (D4).

Table 6. Default Jumper Settings for Pmod 1

Location	Circuit Group	Default (Open / Closed) (Fitted / Not fitted)	Function
E34	Pmod 1	Closed	Closed: P102 (RXD2 / SI20) connects to Pmod 1 (RXD / MISO / SCL).
			Open: P102 (RXD2 / SI20) disconnects from Pmod 1 (RXD / MISO / SCL).
E35	Pmod 1	Closed	Closed: P101 (SCK20) connects to Pmod 1 (RTS / SCK / SDA).
			Open: P101 (SCK20) disconnects from Pmod 1 (RTS / SCK / SDA).
E36	Pmod 1	Open	Closed: P010 (SDAA1) connects to Pmod 1 (RTS / SCK / SDA).
			Open: P010 (SDAA1) disconnects from Pmod 1 (RTS / SCK / SDA).
E37	Pmod 1	Open	Closed: P011 (SCLA1) connects to Pmod 1 (RXD / MISO / SCL).
			Open: P011 (SCLA1) disconnects from Pmod 1 (RXD / MISO / SCL).
E43	Pmod 1	Closed	Closed: +3.3 V connects to Pmod 1 (VCC).
			Open: +3.3 V disconnects from Pmod 1 (VCC).
E45	Pmod 1	Open	Closed: +5 V connects to Pmod 1 (VCC).
			Open: +5 V disconnects from Pmod 1 (VCC).
E55	Pmod 1	Closed	Closed: P103 (TXD2 / SO20) connects to Pmod 1 (TXD / MOSI).
			Open: P103 (TXD2 / SO20) disconnects from Pmod 1 (TXD / MOSI).

Table 7. Default Jumper Settings for Pmod 2

Location	Circuit Group	Default (Open / Closed) (Fitted / Not fitted)	Function
E38	Pmod 2	Closed	Closed: P108 (IRQ4_B) connects to Pmod 2 (CTS / INT).
			Open: P108 (IRQ4_B) disconnects from Pmod 2 (CTS / INT).
E39	Pmod 2	Closed	Closed: P000 (RXD1) connects to Pmod 2 (RXD / SCL).
			Open: P000 (RXD1) disconnects from Pmod 2 (RXD / SCL).
E40	Pmod 2	Closed	Closed: P207 connects to Pmod 2 (RTS / SDA).
			Open: P207 disconnects from Pmod 2 (RTS / SDA).
E41	Pmod 2	Open	Closed: P010 (SDAA1) connects to Pmod 2 (RTS / SDA).
			Open: P010 (SDAA1) disconnects from Pmod 2 (RTS / SDA).
E42	Pmod 2	Open	Closed: P011 (SCLA1) connects to Pmod 2 (RXD / SCL).
			Open: P011 (SCLA1) disconnects from Pmod 2 (RXD / SCL).
E44	Pmod 2	Closed	Closed: +3.3 V connects to Pmod 2 (VCC).
			Open: +3.3 V disconnects from Pmod 2 (VCC).
E46	Pmod 2	Open	Closed: +5 V connects to Pmod 2 (VCC).
			Open: +5 V disconnects from Pmod 2 (VCC).
R52	Pmod 2	Fitted	Fitted: P202 (IRQ2_C / RIN0) connects to Pmod 2 (INT).
			Not fitted: P202 (IRQ2_C / RIN0) disconnects from Pmod 2 (INT).

Table 8. Default Jumper Settings for Grove

Location	Circuit Group	Default (Open / Closed)	Function
E18	Grove	Open	Closed: P105 (ANI18) connects to Grove (SCL / AN).
			Open: P105 (ANI18) disconnects from Grove (SCL / AN).
E19	Grove	Closed	Closed: P011 (SCLA1) connects to Grove (SCL / AN).
			Open: P011 (SCLA1) disconnects from Grove (SCL / AN).
E20	Grove	Closed	Closed: P010 (SDAA1) connects to Grove (SDA / AN).
			Open: P010 (SDAA1) disconnects from Grove (SDA / AN).
E21	Grove	Open	Closed: P106 (ANI19) connects to Grove (SDA / AN).
			Open: P106 (ANI19) disconnects from Grove (SDA / AN).

Table 9. Default Jumper Settings for HMI Features

Location	Circuit Group	Default (Open / Closed) (Fitted / Not fitted)	Function
E11	USER LEDES	Closed	Closed: P107 (TO03_A) connects to LED1.
			Open: P107 (TO03_A) disconnects from LED1.
E13	USER LEDES	Closed	Closed: P100 (TO05) connects to LED2.
			Open: P100 (TO05) disconnects from LED2.
E12	USER PUSH-SWITCH	Closed	Closed: P108 (IRQ4_B) connects to user switch S1.
			Open: P108 (IRQ4_B) disconnects from user switch S1.
R51	IR RECEIVER	Not fitted	Fitted: P202 (IRQ2_C / RIN0) connects to OUT pin of IR Receiver Module (U3).
			Not fitted: P202 (IRQ2_C / RIN0) disconnects from OUT pin of IR Receiver Module (U3).

## 5. System Control and Ecosystem Access

The FPB-R9A02G021 provides a power supply regulator, an on-board debug probe, simple I/O (switches and LEDs), and popular I/O ecosystem connectors. These are all described in detail below.

### 5.1 Power

The FPB-R9A02G021 board is designed for +5 V operation. An on-board Linear Regulator is used to convert the +5 V supply to a +3.3 V supply. The +3.3 V supply is used to power the MCU and other peripheral features.

**Note: Power to the FPB-R9A02G021 board can't be supplied by an external debug probe. An USB cable or external power supply must be used to power the board.**

#### 5.1.1 Power Supply Options

This section describes the different ways in which FPB-R9A02G021 board can be powered.

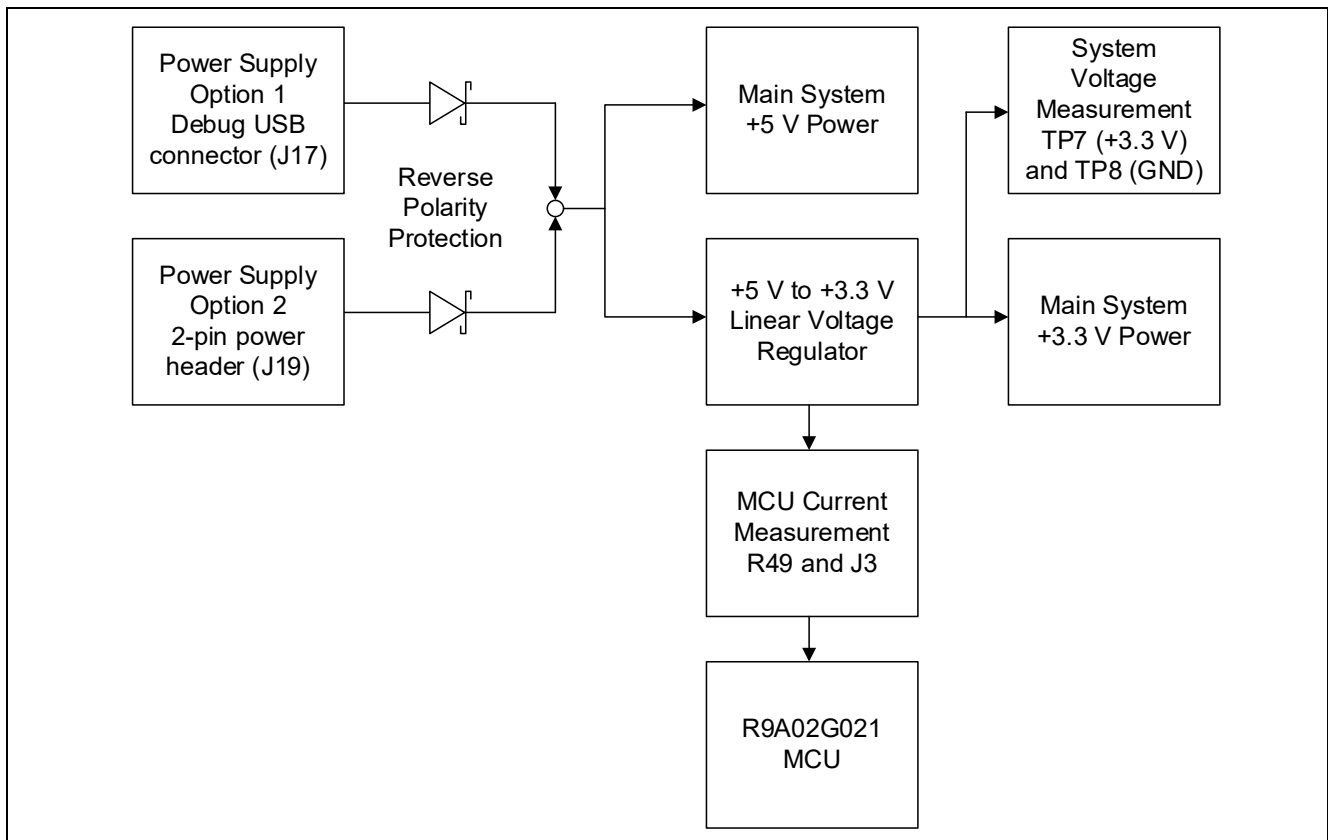


Figure 9. Power Supply Options

##### 5.1.1.1 Option 1: USB

+5 V may be supplied from a host PC to the USB Type C connector (J17) labelled DEBUG1 on the board. Power from this source is connected to the main system +5 V power. Reverse current protection is provided between this connector and the main system +5 V power.

##### 5.1.1.2 Option 2: Header Connector J19

+5 V may be supplied from an external power supply to connector J19. J19 can be fitted with a standard 2-pin header on a 0.1" (2.54 mm) pitch. Pin 1 is +5 V, and pin 2 is GND. Power from this source is connected to the main system +5 V power. Reverse current protection is provided between J19 and the main system +5 V power.

### 5.1.2 Power Supply Considerations

Voltage of Main System +5 V Power will be lower than the power supply voltage because of the forward voltage (max 0.55V@1A) of the reverse current protection diode. Please note the voltage drop, because Main System +5 V Power is +5 V power source which supplies to external devices connected to Arduino, Pmod 1 and Pmod 2.

Note: The maximum current that could be supplied to the FPB-R9A02G021 board is 1 A. Please be aware that the larger the current is, the higher the temperature of reverse current protection diode and +3.3V linear regulator will be.

### 5.1.3 Power-up Behavior

When powered, the green LED labelled LED3 will light up.

## 5.2 Debug and Programming

The FPB-R9A02G021 board can be debugged using the built-in J-Link OB debug probe (Debug on-board mode) and an external debug probe (Debug in mode).

**Table 10. Debug Mode**

Debug Mode	Debug MCU (the device that connects to the IDE on PC)	Target MCU (the device that is being debugged)	Debugging Interface / Protocol	Connector used
Debug on-board	J-Link OB debug probe	R9A02G021 (on-board)	cJTAG	USB DEBUG1 Connector (J17)
Debug in	External debug probe	R9A02G021 (on-board)	cJTAG	20-pin 1.27mm pitch SMD Connector

Notes:

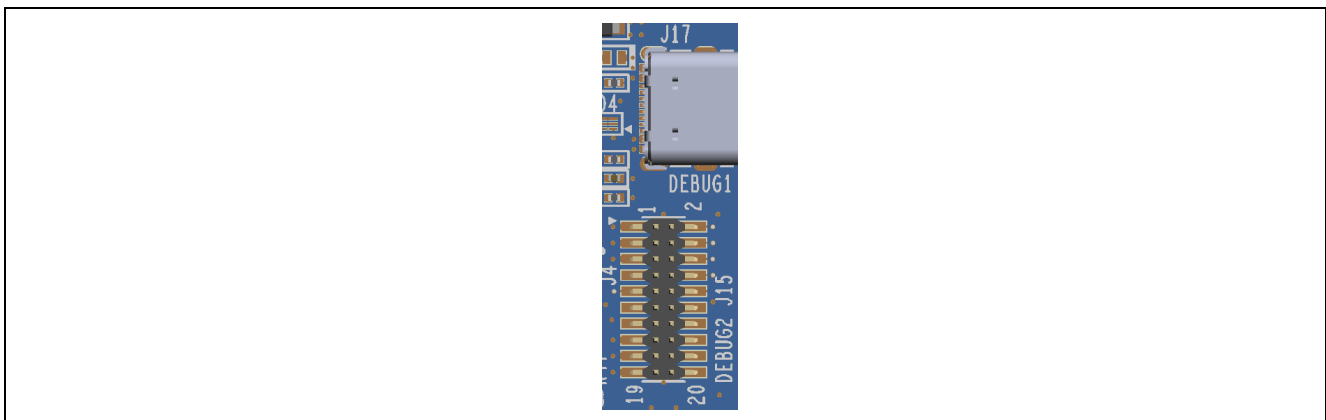
- See Table 12 for the USB DEBUG1 connector pin definition.
- See Table 13 for the 20-pin 1.27 mm pitch SMD connector pin definition.

The built-in J-Link OB debug probe or an external debug probe can be used also for programming to the FPB-R9A02G021 board. The FPB-R9A02G021 board can be programmed using VCOM of the built-in J-Link OB debug probe (UART Boot via VCOM mode) or an external debug probe (UART Boot via external debug probe mode).

The following table summarizes the jumper configuration for debugging and programming.

**Table 11. Jumper Configuration for Debugging and Programming**

Debugging / Programming Mode	Debugging / Programming Interface	VCOM	J5 & J6	J8	J18
Debug on-board	cJTAG	Available	Jumper on pins 2-3	Open	Open
Debug in	cJTAG	Not available	Jumper on pins 1-2	Open	Closed
UART Boot via VCOM	UART Boot	Available as UART Boot resource	Jumper on pins 2-3	Closed	Open
UART Boot via external debug probe	UART Boot	Not available	Jumper on pins 1-2	Closed	Closed



**Figure 10. FPB-R9A02G021 Debug Interface**

### 5.2.1 J-Link OB debug probe

USB DEBUG1 (Type C) connector (J17) connects the J-Link OB debug probe to a host PC, allowing re-programming and debugging of the MCU firmware.

The J-Link OB debug probe connects to the MCU using the cJTAG interface. Please note that connecting the same host PC to multiple FPB-R9A02G021 boards is not possible.

**Table 12. USB Debug Connector**

USB Debug Connector		FPB-R9A02G021
Pin	Description	Signal / Bus
J17-A4_B9	VBUS [0]	+5V_USB_DBG
J17-B4_A9	VBUS [1]	+5V_USB_DBG
J17-A5	CC1	5.1kΩ Pull-down
J17-B5	CC2	5.1kΩ Pull-down
J17-A6	DP1	USB_JLOB_DP
J17-B6	DP2	USB_JLOB_DP
J17-A7	DN1	USB_JLOB_DM
J17-B7	DN2	USB_JLOB_DM
J17-A8	SBU1	NC
J17-B8	SBU2	NC
J17-A1_B12	GND [0]	GND
J17-B1_A12	GND [1]	GND

The yellow LED4, shows the visual status of the debug interface. When the FPB-R9A02G021 board is powered on, and LED4 is blinking, it indicates that the J-Link OB debug probe is not connected to a host PC. When LED4 stays on, it indicates that it is connected to a host PC.

### 5.2.2 External debug probe

The 20-pin 1.27 mm pitch SMD connector at J15 supports cJTAG interface and UART boot. This connector may be used for external debug of the MCU.

The cable that comes with your emulator may have a pin stopper on pin7. In that case, remove the pin stopper from the socket.

The connector J15 doesn't have reverse insertion prevention mechanism. Match pin 1 of the cable to be connected with Pin 1 of connector J15, and be careful not to connect reversely.

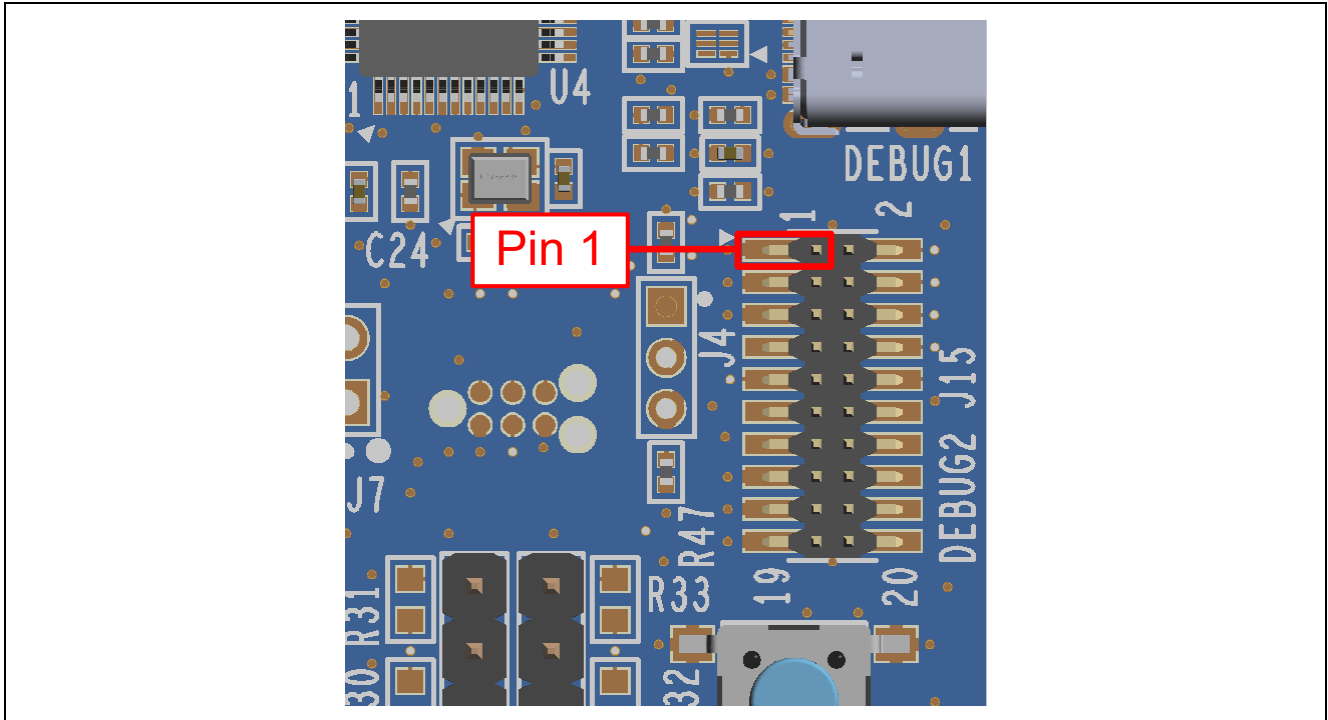


Figure 11. Connector for external debug probe

Table 13. External debug probe Connection

Pin	External Debugger Connection		FPB-R9A02G021
	cJTAG Pin Name	UART Boot Pin Name	Signal / Bus
J15-1	VTref		+3.3 V
J15-2	TMSC	Not used	P301 (TMSC)
J15-3	GND		GND
J15-4	TCKC	Not used	P300 (TCKC)
J15-5	GND		GND
J15-6	Not used	TXD	P302 (TXD0_B)
J15-7	Not used		NC
J15-8	Not used	RXD	P303 (RXD0_B)
J15-9	GNDDetect		GND (cut E48 to open)
J15-10	RESET		RES#
J15-11	5V-Supply		NC
J15-12	NC		NC
J15-13	5V-Supply		NC
J15-14	NC		NC
J15-15	GND		GND
J15-16	NC		NC
J15-17	GND		GND
J15-18	NC		NC
J15-19	GND		GND
J15-20	NC		NC

### 5.2.3 Settings in e<sup>2</sup> studio and Renesas Flash Programmer

FPB-R9A02G021 needs to be configured in Debug on-board shown in Table 11 when the MCU is debugged or re-programmed at Debug on-board mode with e<sup>2</sup> studio. Figure 12 shows the settings for e<sup>2</sup> studio when creating a new project for the FPB-R9A02G021 board.

[Debug hardware]: Select [J-Link RISC-V]

[Target Device]: Select [R9A02G021]

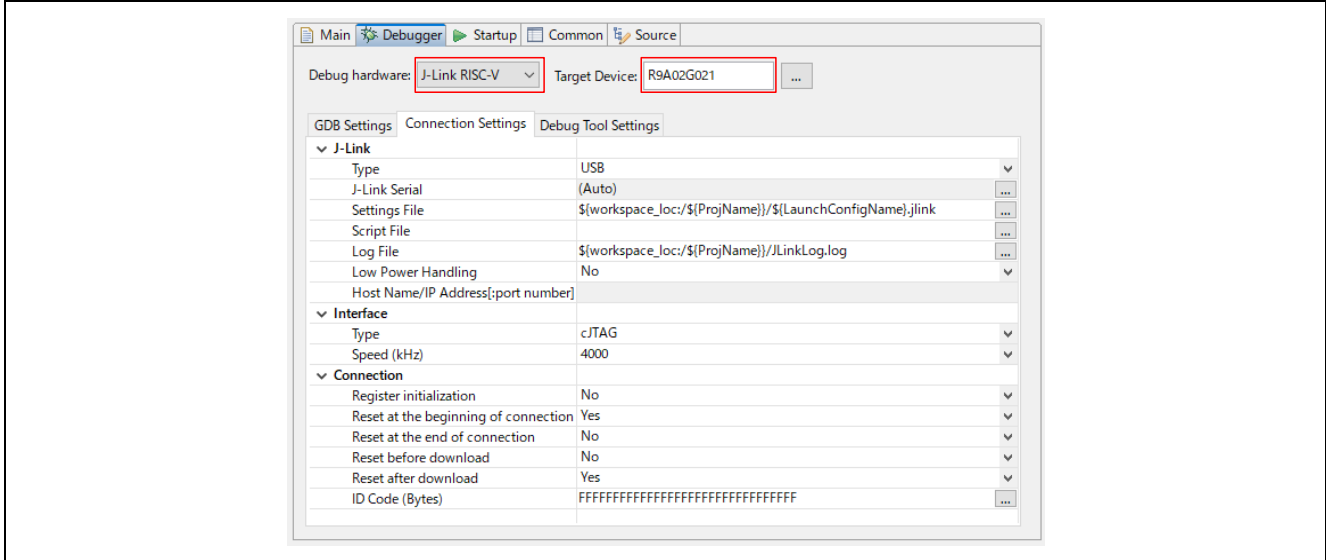


Figure 12. e<sup>2</sup> Studio Settings

FPB-R9A02G021 needs to be configured in UART Boot via VCOM shown in Table 11 when the MCU is re-programmed at UART Boot via VCOM mode with Renesas Flash Programmer. Figure 13 shows the settings for Renesas Flash Programmer when creating a new project for the FPB-R9A02G021 board.

Connect an USB cable between the FPB-R9A02G021 and a host PC and create a new project.

[Microcontroller]: Select [RISC-V MCU]

[Project Name]: Define project name

[Project Name]: Select project folder location

[Tool]: Select [COM port]

[Tool Details]: Select COM port which shows JLink CDC UART Port

The MCU doesn't enter into UART (SAU) boot mode by Power-on reset. Therefore, the user needs to push the reset switch on the FPB-R9A02G021 board and then click on Connect button.

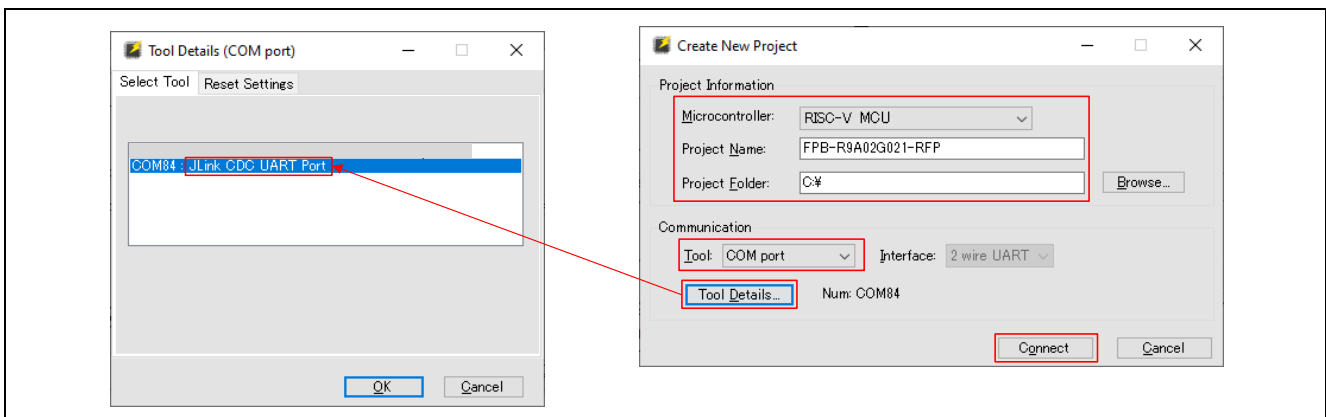


Figure 13. Renesas Flash Programmer Settings

### 5.3 Ecosystem

The Ecosystem connectors provide users the option to connect several third party add-on modules compatible with three popular ecosystems using the following connectors:

1. Seeed Grove® connector (not fitted)
2. Two Digilent Pmod™ connectors  
Pmod 1: Type-2A (expanded SPI), Type-3A (expanded UART) and Type-6A (expanded I<sup>2</sup>C)  
Pmod 2: Type-3A (expanded UART) and Type-6A (expanded I<sup>2</sup>C)
3. Arduino® (Uno R3) connectors

**Note.1: We do not guarantee connection to all types of third party add-on modules. Confirm the specifications of this product against any third party add-on modules you intend to use.**

**Note.2: Third party add-on modules may not be able to connect the FPB-R9A02G021 board simultaneously because the MCU pins which are connected to third party add-on modules are multiplexed. Confirm the specifications of this product and R9A02G021 User's Manual: Hardware.**

Table 14 summarizes connection between the MCU and the ecosystem connectors. The cells filled in green indicate that the signals are connected by default, and the cells filled in yellow indicate that the signals can be optionally connected by jumpers setting and resistors fitting. The blank cells indicate no connection between the MCU and the ecosystem connectors.

Due to port limitation of the MCU, one port may be connected to several ecosystem connectors. Please configure the jumpers and the resistors according to user's ecosystem configuration by referring Table 14.

#### ■ I<sup>2</sup>C

I<sup>2</sup>C is connected to Pmod 1, Pmod 2, Grove and Arduino. The I<sup>2</sup>C channel in the MPU is same module, so that I<sup>2</sup>C slave devices are needed to select by slave address.

The I<sup>2</sup>C can be configured either +3.3 V or +5 V pull-up by solder jumper E25 and E27.

P011 (SCLA1 / TO07\_B) of the I<sup>2</sup>C is shared with a PWM signal of Arduino. I<sup>2</sup>C is unavailable when P011 port is configured to PWM function.

#### ■ SPI

SPI is connected to Pmod 1 and Arduino. The SPI channel in the MPU is same module, so that SPI slave devices are needed to select by chip select signal when both Pmod 1 and Arduino are connected to SPI slave devices.

P102 (SI20 / TO01) of the SPI is shared with a PWM signal of Arduino. SPI is unavailable when P102 port is configured to PWM function.

The P102 (SI20 / RXD2) and P103 (SO20 / TXD2) of the SPI are multiplexed with UART, and the UART is assigned to Pmod 1. SPI is unavailable when the ports are configured to the UART.

#### ■ UART

UARTs are connected to Pmod 1, Pmod 2 and Arduino. The UART channels connected to Pmod 2 and Arduino is independent, so that devices that connected to Pmod 2 and Arduino can be used simultaneously.

The UART (RXD and TXD) connected to Pmod 1 is multiplexed MISO and MOSI of the SPI. UART for Pmod 1 is unavailable when configured to SPI.

#### ■ Miscellaneous

The signals connected to ecosystem connectors are also shared with IR receiver, user LEDs and user switch. Please select the function you intend to use by jumper setting and resistor fitting.

Table 14. MCU and Ecosystem Connection

MCU	Ecosystem					
	I/O Port	Pmod 1	Pmod 2	Grove	Arduino	Misc. (LED, Switch, IR Receiver)
P201	INT					
P202		INT				IR Receiver Module
P204	RESET					
P205	GPIO					
P206	GPIO					
P307		GPIO				
P303					PWM	
P304					D7	
P305					D8	
P207		RTS			D4	
P306		GPIO				
P108		CTS / INT				User Switch S1
P109	CTS / CS / INT					
P100					D3 / INT / PWM	User LED2
P101	RTS / SCK				D13 / SCK	
P110					D2 / INT	
P111		RESET				
P102	RXD / MISO				D12 / MISO	
					PWM	
P103	TXD / MOSI				D11 / MOSI / PWM	
P011	SCL	SCL	SCL	SCL	SCL	
					PWM	
P010	SDA	SDA	SDA	SDA	SDA	
P009					D10 / SS	
P008					D0 / RX	
P104					D6	
P105			AN	AN	A4	
P106			AN	AN	A5	
P107					D9 / PWM	User LED1
P403					D1 / TX	
P402					D5	
P001		TXD				
P000		RXD				
P007					A3	
P006					A2	
P401					A1	
P400					A0	

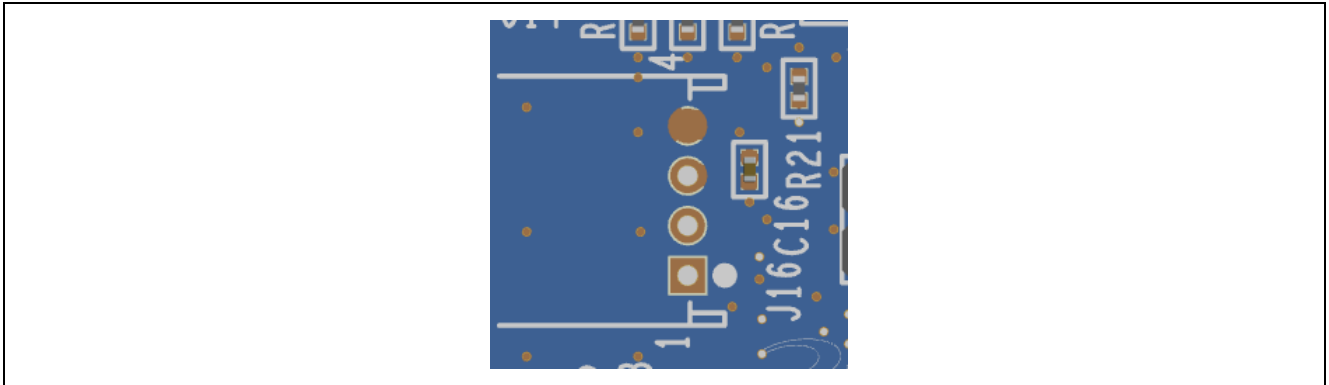
### 5.3.1 Seed Grove® Connector

A Seed Grove I<sup>2</sup>C / Analog connector is provided at J16 (not fitted). The MCU acts as a two-wire serial master, and a connected module acts as a two-wire serial slave. Alternatively, this port can be configured to support two analog (ADC) inputs.

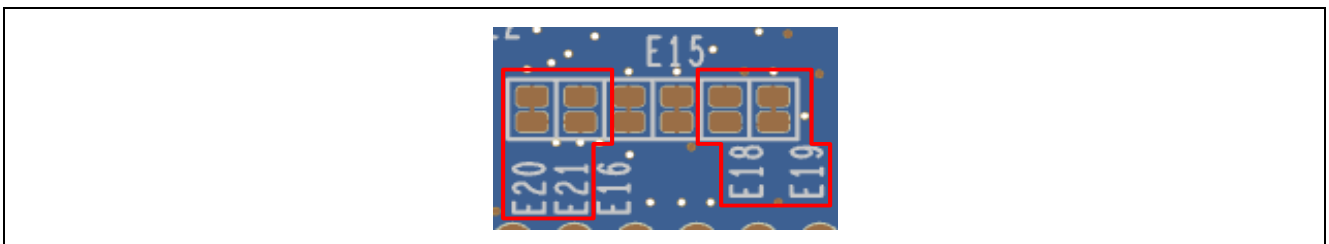
The signals connected to Grove connector are shared with other ecosystem connectors. See Table 14 and FPB-R9A02G021 board schematic in detail.

**Table 15. Seed Grove Connector**

Seed Grove Connector		FPB-R9A02G021	Seed Grove Configuration	
Pin	Description	Signal / Bus	Close	Open
J16-1	SCL / AN	P011 (SCLA1)	E19	E18
		P105 (ANI18)	E18	E19
J16-2	SDA / AN	P010 (SDAA1)	E20	E21
		P106 (ANI19)	E21	E20
J16-3	VCC	+3.3 V		
J16-4	GND	GND		



**Figure 14. Seed Grove Connector**



**Figure 15. Seed Grove Copper Jumpers (bottom side)**

## 5.3.2 Digilent Pmod™ Connectors

### 5.3.2.1 Pmod 1

A 12-pin Pmod Type-2A (expanded SPI), Type-3A (expanded UART) and Type-6A (expanded I<sup>2</sup>C) connector is provided at connector J13 labelled PMOD1. At Type-2A, the MCU acts as the SPI master, and the connected module acts as a SPI slave device. At Type-6A, the MCU acts as a two-wire serial master, and a connected module acts as a two-wire serial slave.

Table 16. Pmod 1 Connector

Pmod1 Connector			FPB-R9A02G021	Pmod 1 Configuration	
Pin	Description Type-2A, 3A	Option Type-6A	Signal / Bus	Close	Open
J13-1	CS / CTS / GPIO	INT	P109 (IRQ5_B)		
J13-2	MOSI / TXD	RESET	P103 (TXD2 / SO20) <sup>*1</sup>	E55	
J13-3	MISO / RXD		P102 (RXD2 / SI20) <sup>*1</sup>	E34	E37
		SCL	P011 (SCLA1) <sup>*1</sup>	E37	E34
J13-4	SCK / RTS / GPIO		P101 (SCK20) <sup>*1</sup>	E35	E36
		SDA	P010 (SDAA1) <sup>*1</sup>	E36	E35
J13-5	GND		GND		
J13-6	VCC		+3.3 V	E43	E45
			+5 V	E45	E43
J13-7	GPIO / INT (slave to master)		P201 (IRQ3_C)		
J13-8	GPIO / RESET (master to slave)		P204		
J13-9	GPIO / CS2		P205		
J13-10	GPIO / CS3		P206		
J13-11	GND		GND		
J13-12	VCC		+3.3 V	E43	E45
			+5 V	E45	E43

\*1: The signals are shared with other ecosystem connectors. See Table 14 and FPB-R9A02G021 board schematic in detail.

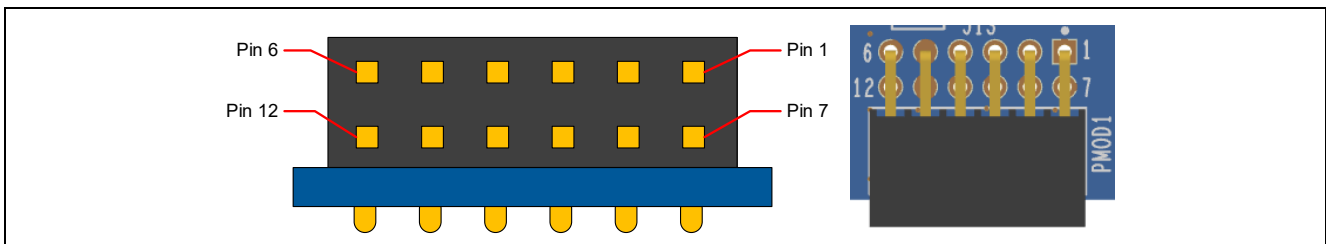


Figure 16. Pmod 1 Connector

The default setting of the Pmod 1 interface supports +3.3 V devices. Please ensure that any Pmod device installed is compatible with a +3.3 V supply.

### Pmod Type-6A Operation

Pmod 1 can be configured to support Pmod Type-6A connector specification supporting I<sup>2</sup>C connections. There is also an alternative +5 V power source option. In order to configure Pmod 1 for Type-6A operation, modify the copper jumpers as described in Table 16. The copper jumpers are shown in Figure 17.

**Note: Exercise caution while modifying power source trace jumpers, E43 and E45. Permanent damage to the FPB-R9A02G021 board and/or connected modules may result.**

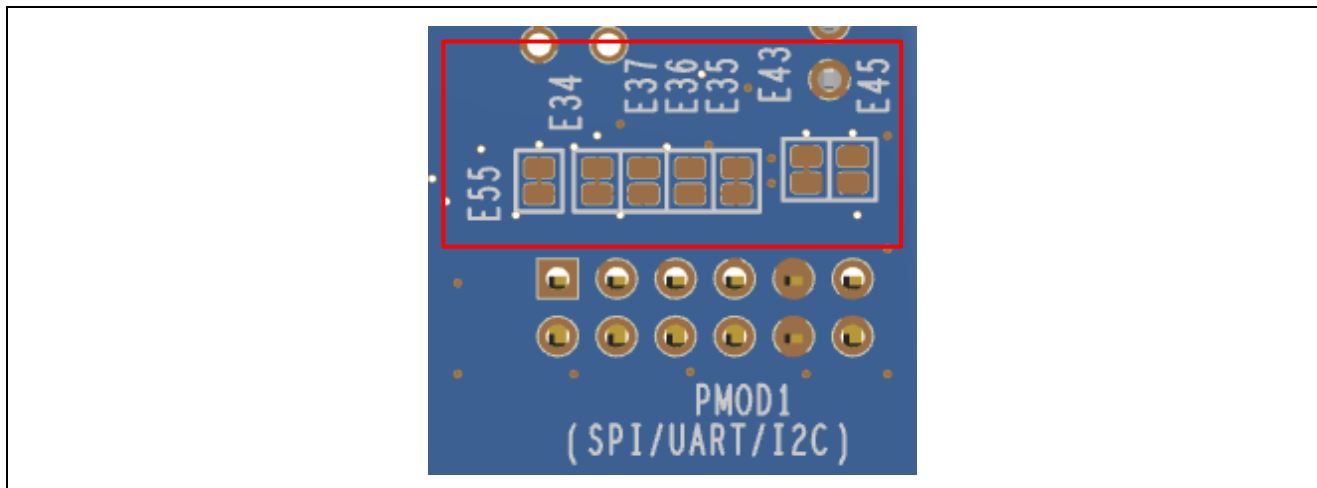


Figure 17. Pmod 1 Copper Jumpers (bottom side)

### 5.3.2.2 Pmod 2

A 12-pin Pmod Type-3A (expanded UART) and Type-6A (expanded I<sup>2</sup>C) connector is provided at connector J14 labelled PMOD2. At Type-6A, the MCU acts as a two-wire serial master, and a connected module acts as a two-wire serial slave.

Table 17. Pmod 2 Connector

Pmod2 Connector			FPB-R9A02G021	Pmod 2 Configuration	
Pin	Description Type-3A	Option Type-6A	Signal / Bus	Close	Open
J14-1	CTS / GPIO	INT	P108 (IRQ4_B) <sup>*1</sup>	E38	
J14-2	TXD	RESET	P001 (TXD1)		
J14-3	RXD		P000 (RXD1)	E39	E42
		SCL	P011 (SCLA1) <sup>*1</sup>	E42	E39
J14-4	RTS / GPIO		P207 <sup>*1</sup>	E40	E41
		SDA	P010 (SDAA1) <sup>*1</sup>	E41	E40
J14-5	GND		GND		
J14-6	VCC		+3.3 V	E44	E46
			+5 V	E46	E44
J14-7	GPIO / INT (slave to master)		P202 (IRQ2_C) <sup>*1</sup>	R52	R51
J14-8	GPIO / RESET (master to slave)		P111		
J14-9	GPIO		P307		
J14-10	GPIO		P306		
J14-11	GND		GND		
J14-12	VCC		+3.3 V	E44	E46
			+5 V	E46	E44

\*1: The signals are shared with other ecosystem connectors, user switches and IR receiver module. See Table 14 and FPB-R9A02G021 board schematic in detail.

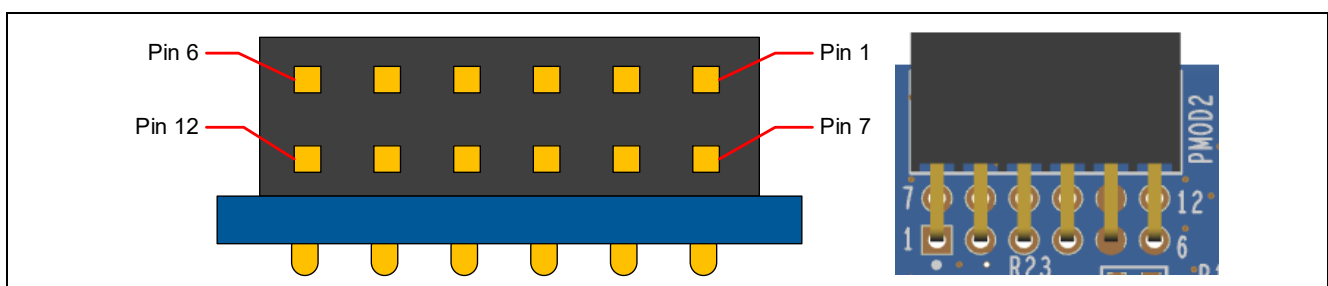


Figure 18. Pmod 2 Connector

The default setting of the Pmod 2 interface supports +3.3 V devices. Please ensure that any Pmod device installed is compatible with a +3.3 V supply.

### Pmod Type-6A Operation

Pmod 2 can be configured to support Pmod Type-6A connector specification supporting I<sup>2</sup>C connections. There is also an alternative +5 V power source option. In order to configure Pmod 2 for Type-6A operation, modify the copper jumpers as described in Table 17. The copper jumpers are shown in Figure 19.

**Note: Exercise caution while modifying power source trace jumpers, E44 and E46. Permanent damage to the FPB-R9A02G021 board and/or connected modules may result.**

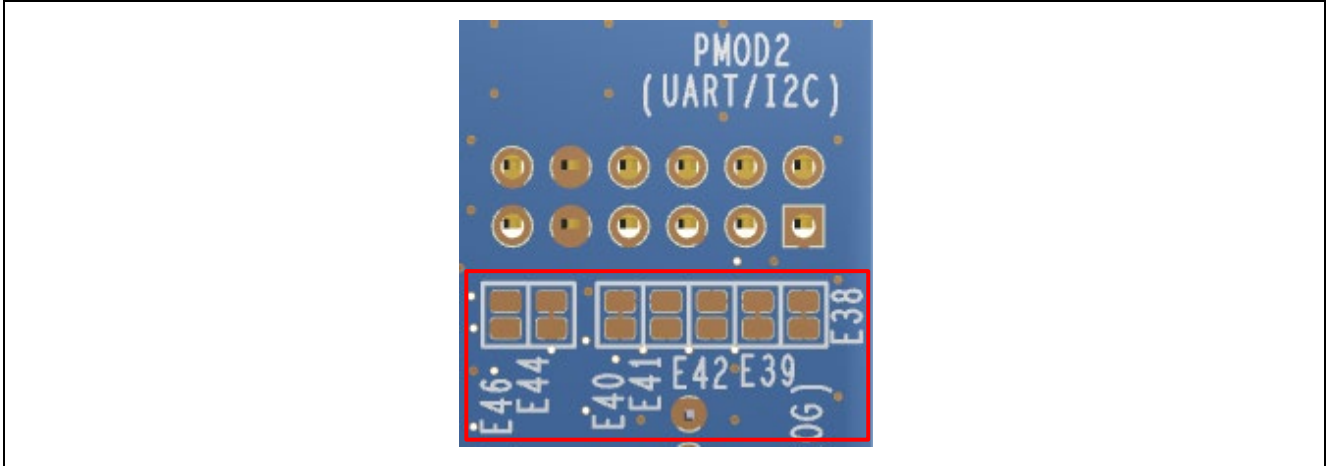


Figure 19. Pmod 2 Copper Jumpers (bottom side)

P202 (IRQ2\_C / RIN0) of the MCU can be connected to OUT pin of the IR receiver module and Pmod 2 INT / GPIO (J14-Pin7). P202 (IRQ2\_C / RIN0) is not connected to OUT pin of the IR receiver module but connected to Pmod 2 INT / GPIO (J14-Pin7) at shipping. It is needed to remove 0Ω resistor (SMD 0603) from R52 and fit 0Ω resistor (SMD 0603) to R51 for using the IR receiver module.

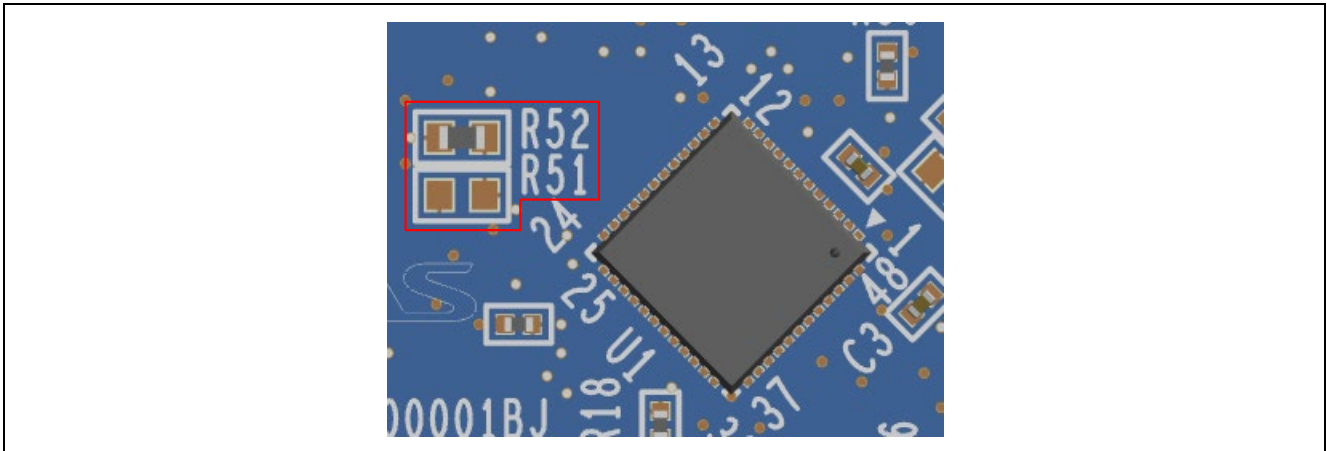


Figure 20. Pmod 2 INT / GPIO Selection Resistor (top side)

### 5.3.3 Arduino® Connector

Arduino Uno R3 compatible connector interface is provided at connector J9, J10, J11 and J12.

**Table 18. Arduino Uno Connections**

Arduino Compatible Connector		FPB-R9A02G021	Arduino Configuration	
Pin	Description	Signal / Bus	Close	Open
J9-1	NC	NC		
J9-2	IOREF	+3.3 V		
J9-3	RESET	RES#		
J9-4	3.3V	+3.3 V		
J9-5	5 V	+5 V	E17	
J9-6	GND	GND		
J9-7	GND	GND		
J9-8	VIN	NC		
J10-1	A0	P400 (ANI2)		
J10-2	A1	P401 (ANI3)		
J10-3	A2	P006 (ANI4)		
J10-4	A3	P007 (ANI5)		
J10-5	A4	P105 (ANI18) <sup>*1</sup>	E15	
J10-6	A5	P106 (ANI19) <sup>*1</sup>	E16	
J11-1	D0 / RX	P008 (RXDA1)		
J11-2	D1 / TX	P403 (TXDA1)		
J11-3	D2 / INT0	P110 (IRQ7_B)		
J11-4	D3 / INT1 / PWM	P100 (IRQ6_C / TO05) <sup>*1</sup>	E24 <sup>*3</sup> , E26	
J11-5	D4	P207 <sup>*1</sup>	E54	
J11-6	D5 / PWM	P402	E32	E33
		P102 (TO01) <sup>*1</sup>	E33	E32
J11-7	D6 / PWM	P104	E31	E30
		P011 (TO07_B) <sup>*1</sup>	E30	E31
J11-8	D7	P304		
J12-1	D8	P305		
J12-2	D9 / PWM	P107 (TO03_A) <sup>*1</sup>	E23	
J12-3	D10 / SS / PWM	P009	E29	E28
		P303 (TO04) <sup>*1*2</sup>	E28	E29
J12-4	D11 / MOSI / PWM	P103 (SO20 / TO02_A) <sup>*1</sup>	E53	
J12-5	D12 / MISO	P102 (SI20) <sup>*1</sup>	E22	
J12-6	D13 / SCK	P101 (SCK20) <sup>*1</sup>	E52	
J12-7	GND	GND		
J12-8	AREF	AVREFP	E5	E3, E4, E6
J12-9	SDA	P010 (SDAA1) <sup>*1</sup>		
J12-10	SCL	P011 (SCLA1) <sup>*1</sup>	E51	

\*1: The signals are shared with other ecosystem connectors, user switches and LEDs. See Table 14 and FPB-R9A02G021 board schematic in detail.

\*2: The signal is shared with VCOM (RXD0\_B).

\*3: By shorting the copper jumper connects J11-Pin4 to +3.3 V through 10kΩ. The copper jumper may be shorted when P100 is assigned to IRQ6\_C.

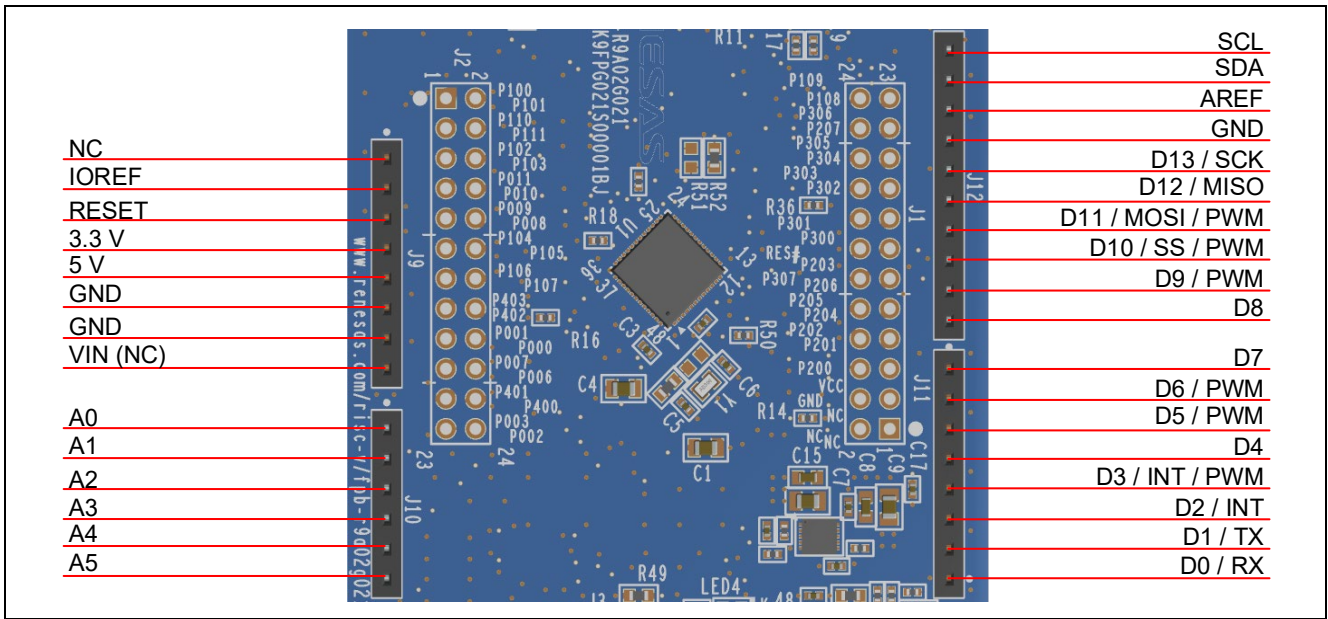


Figure 21. Arduino Uno Connectors

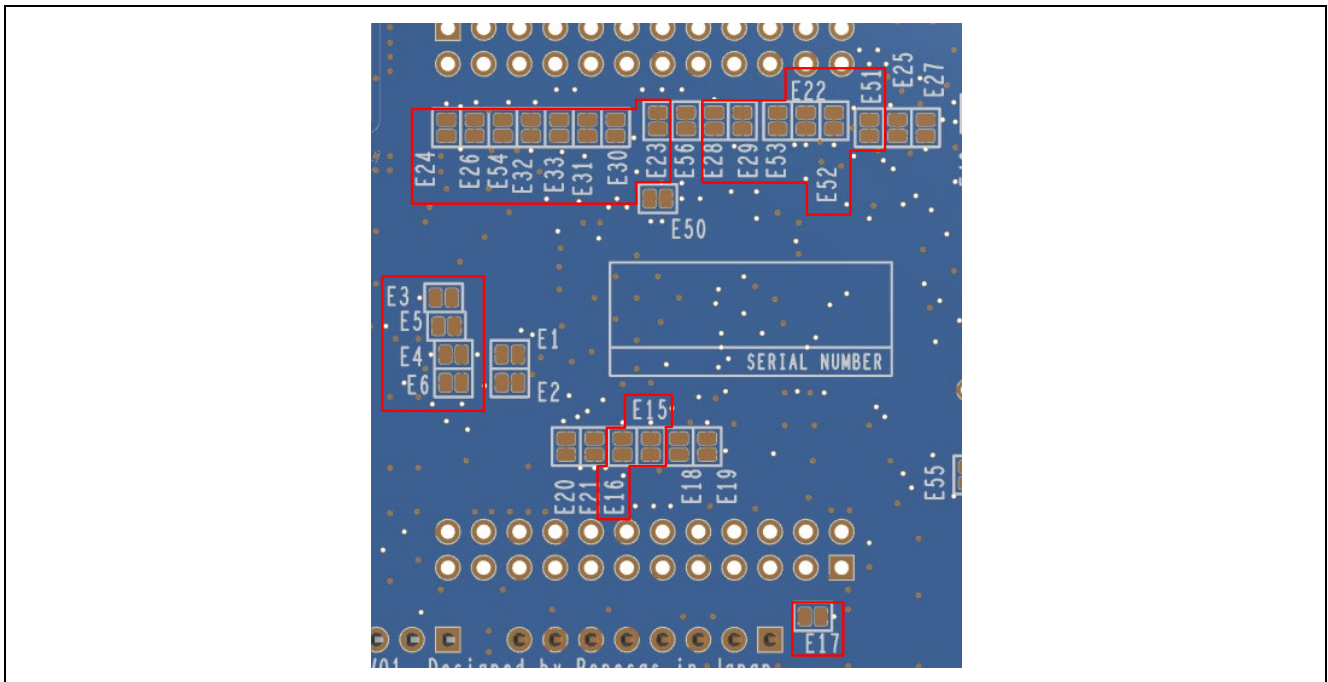


Figure 22. Arduino Uno Copper Jumpers (bottom side)

## 5.4 Miscellaneous

### 5.4.1 LED

Four LEDs are provided on the FPB-R9A02G021 board.

Functions of the LEDs on the FPB-R9A02G021 board is described in the following table.

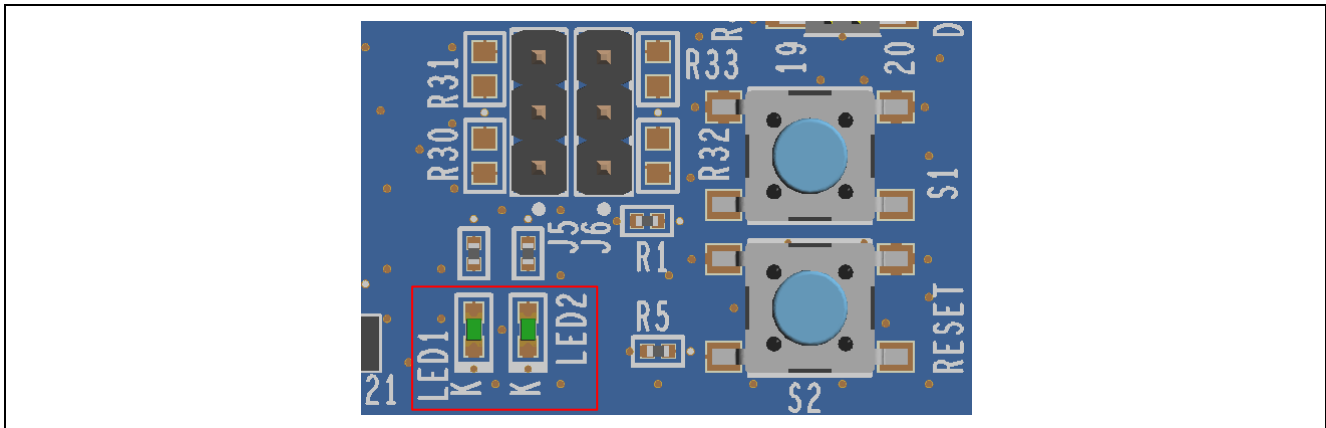
**Table 19. FPB-FPB-R9A02G021 Board LED Functions**

Reference number	Color	Function	MCU Control Port
LED1	Green	User LED	P107 (TO03_A) <sup>*1</sup>
LED2	Green	User LED	P100 (TO05) <sup>*2</sup>
LED3	Green	Power on indicator	+3.3 V
LED4	Yellow	Debug LED	J-Link OB debug probe MCU

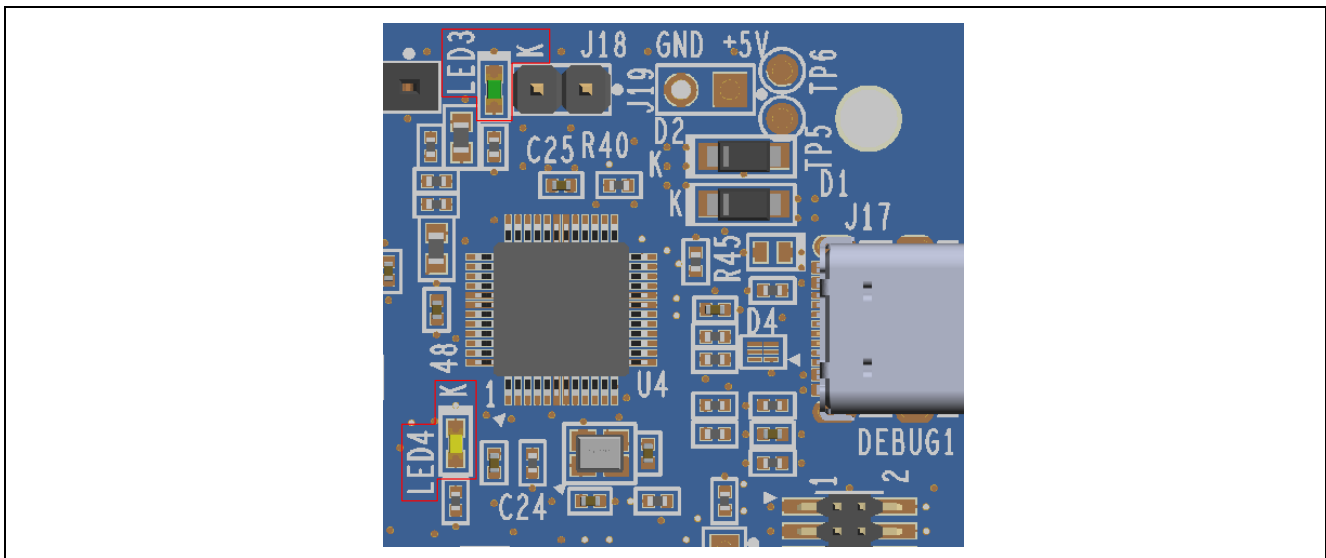
\*1: The signal is shared with Arduino (D9 / PWM).

\*2: The signal is shared with Arduino (D3 / INT / PWM).

The User LEDs may be disconnected from the MCU so that the associated ports can be used for other purposes. To disconnect LED1 from P107, copper jumper E11 must be open. To disconnect LED2 from P100, copper jumper E13 must be open.



**Figure 23. User LEDs**



**Figure 24. Power LED and Debug LED**

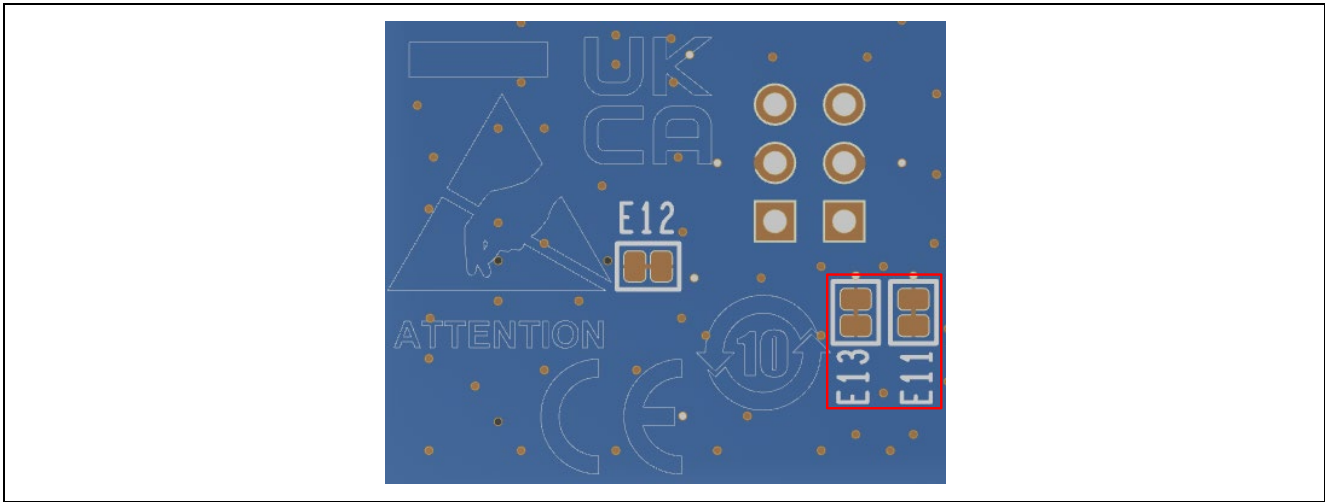


Figure 25. User LEDs Copper Jumpers (bottom side)

### 5.4.2 User and Reset Switches

Two miniature, momentary, mechanical push-button type SMD switches are mounted on the FPB-R9A02G021 board.

Pressing the reset switch (S2) generates a reset signal to restart the MCU.

Table 20. FPB-R9A02G021 Board Switches

Reference number	Function	MCU Control Port
S1	User Switch	P108 (IRQ4_B) <sup>*1</sup>
S2	MCU Reset Switch	RES#

\*1: The signal is shared with Pmod 2 (CTS / INT).

The User Switch S1 may be isolated from the MCU, so that the associated port can be used for other purposes. To disconnect S1 from P108, trace cut jumper E12 must be open.

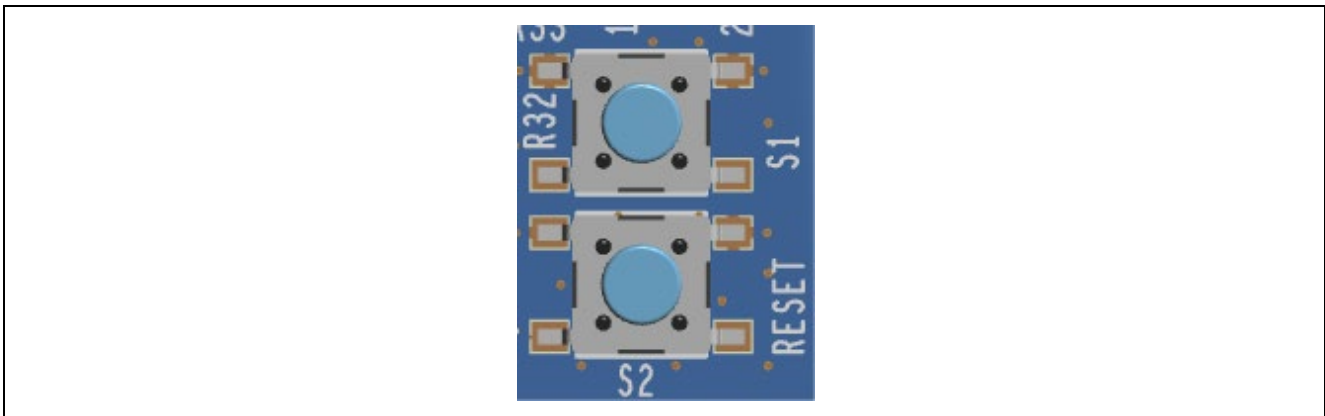


Figure 26. Reset (S2) and User Switch (S1)

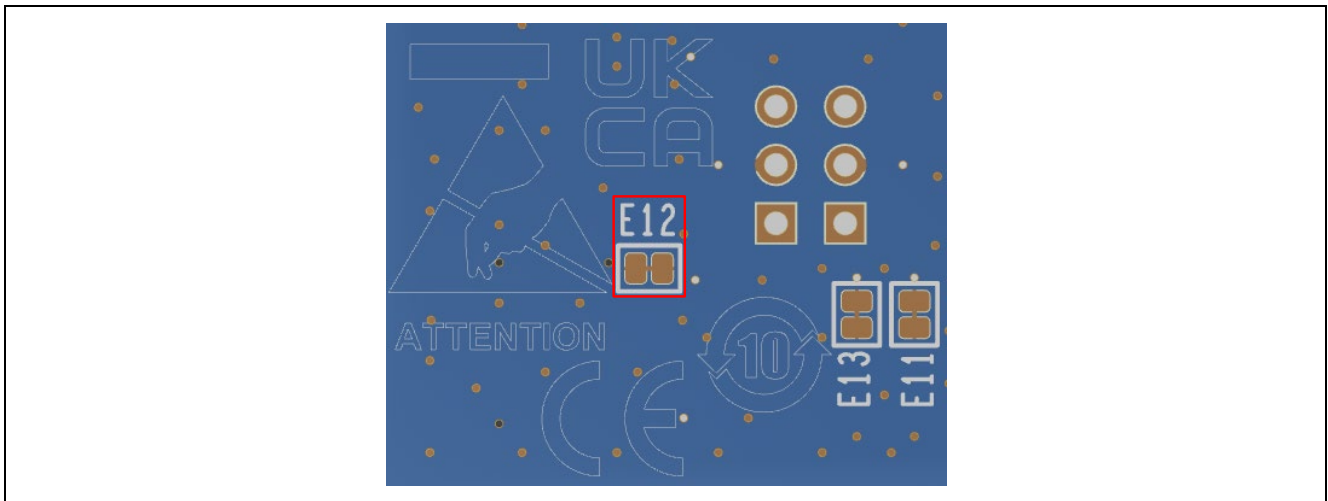


Figure 27. User Switch S1 Copper Jumper (bottom side)

#### 5.4.3 MCU Boot Mode

A two-pin header (J8) can be fitted to select the boot mode (P203) of the MCU. For normal operation (single-chip mode), leave J8 open. To enable UART boot mode, place a shunt jumper on J8.

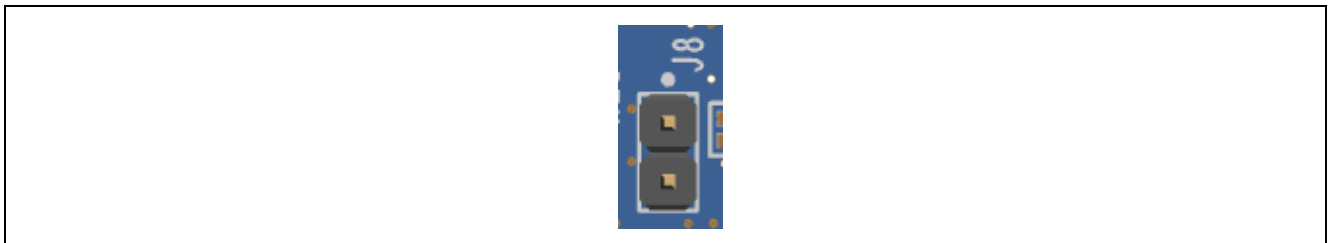


Figure 28. Boot Mode Jumper (J8)

## 6. Special Feature Access

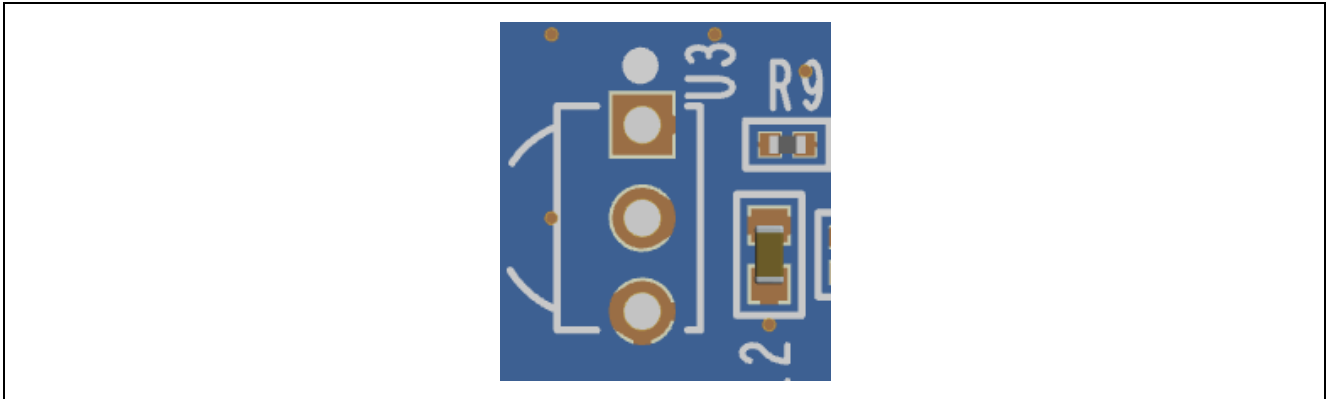
### 6.1 Remote Control Signal Receiver

The FPB-R9A02G021 Board can be equipped with IR Receiver Module for remote control receive function. TSOP32438 (VISHAY) might be used for the FPB-R9A02G021 board. Refer to the manufacturer website for specification of the IR Receiver Module.

P202 (IRQ2\_C / RIN0) of the MCU is connected to OUT pin of the IR receiver module and Pmod 2 INT / GPIO (J14-Pin7). It is needed to fit 0Ω resistor (SMD 0603) to R51 and remove 0Ω resistor (SMD 0603) from R52 when using the remote control receive function. Refer to Figure 20 regarding to location for R51 and R52.

**Table 21. Remote Control Signal Receiver**

IR Receiver Module		FPB-R9A02G021
Pin	Description	Signal / Bus
U3-1	OUT	P202 (IRQ2_C / RIN0)
U3-2	VS	+3.3 V
U3-3	GND	GND



**Figure 29. IR Receiver Module**

## 7. MCU Native Pin Access

### 7.1 Breakout Pin Headers

The FPB-R9A02G021 board pin headers (not fitted), J1 and J2, provide access to all MCU interface signals, and to voltage of the MCU power port. Each header pin is labelled with the voltage or port connected to that pin. Refer to the R9A02G021 MCU User's Manual: Hardware for details of each port function, and the FPB-R9A02G021 board schematic for pin header port assignments.

The placement of the breakout pin headers allows for a standard 2.54 mm (0.100") breadboard to be placed on both pin headers simultaneously. This can be used for prototyping and testing of custom circuitry for use with the MCU.

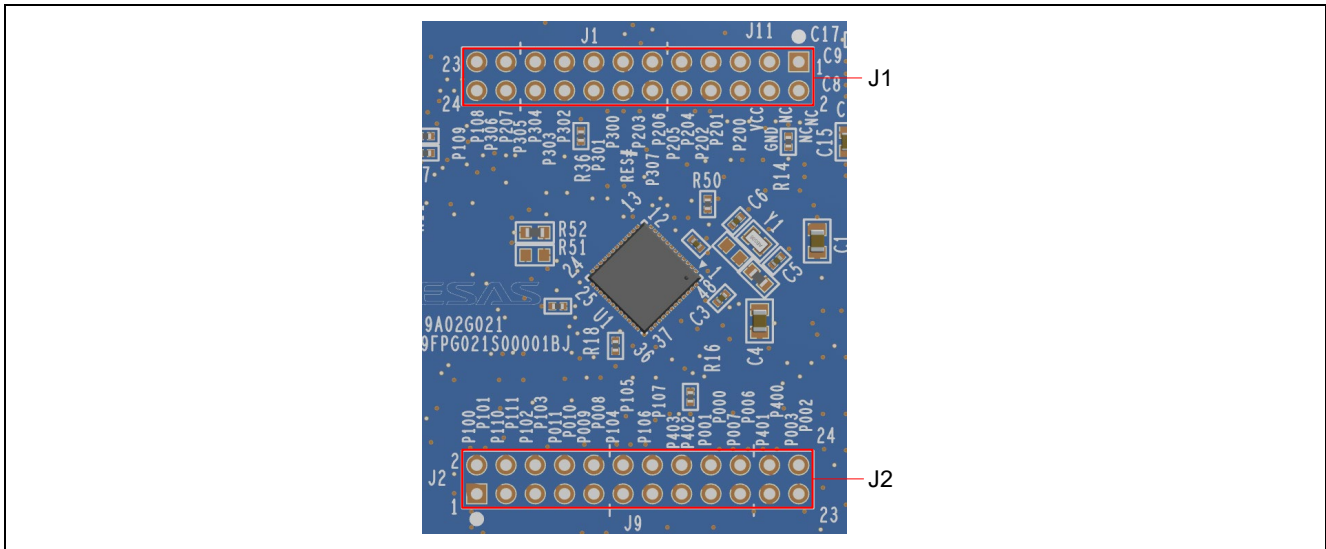


Figure 30. Breakout Pin Headers J1 and J2

### 7.2 MCU Current Measurement

Two pin header J3 (not fitted) is provided on the FPB-R9A02G021 board to measure the MCU current.

Resistor R49 is 0Ω (SMD 0603) as supplied. It should be removed in order to measure the current consumption using an ammeter connected between the pin header pins.

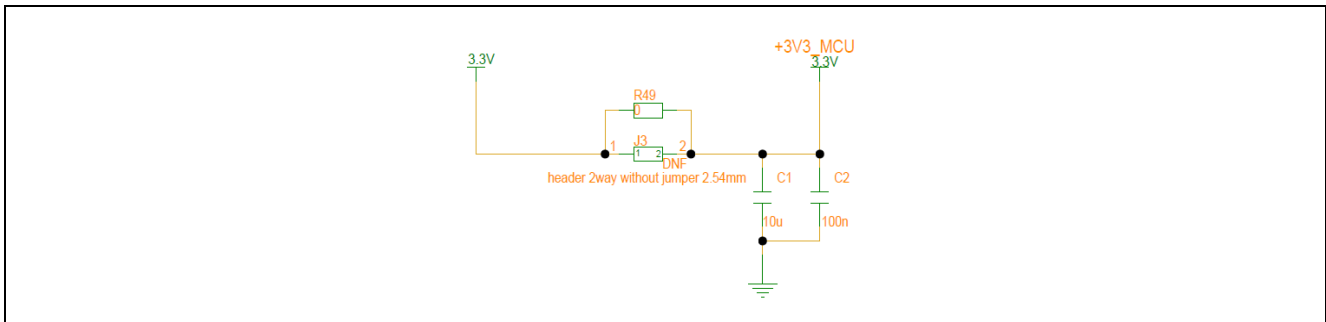


Figure 31. MCU +3.3 V Current Measurement Circuit

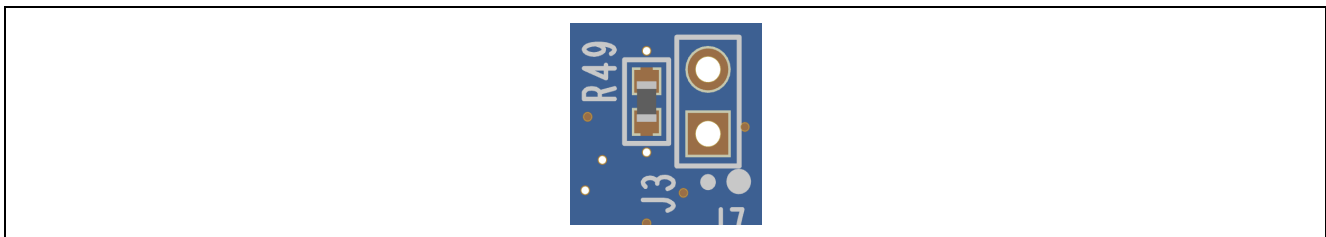


Figure 32. MCU +3.3 V Current Measurement Pin Header J3 and R49

## 8. Certifications

The FPB-R9A02G021 board meets the following certifications/standards. See page 4 of this user's manual for the disclaimer and precautions.

### 8.1 EMC/EMI Standards

- Innovation, Science and Economic Development Canada ICES-003 Compliance:

CAN ICES-3 (A)/NMB-3(A)

- CE Class A (EMC)



This product is herewith confirmed to comply with the requirements set out in the Council Directives on the Approximation of the laws of the Member States relating to Electromagnetic Compatibility Directive 2014/30/EU.

**Warning** – This is a Class A product. In a domestic environment this product may cause radio interference in which case the user may be required to take adequate measures to correct this interference.

- UKCA Class A (EMC)



This product is in conformity with the following relevant UK Statutory Instrument(s) (and its amendments): 2016 No. 1091 Electromagnetic Compatibility Regulations 2016.

**Warning** – This is a Class A product. In a domestic environment this product may cause radio interference in which case the user may be required to take adequate measures to correct this interference.

- Taiwan: Chinese National Standard 13438, C6357 compliance, Class A limits
- Australia/New Zealand AS/NZS CISPR 32:2015, Class A

### 8.2 Material Selection, Waste, Recycling and Disposal Standards

- EU RoHS
- China SJ/T 113642014, 10-year environmental protection use period.
- WEEE Directive (2012/19/EU) & The Waste Electrical and Electronic Equipment Regulations 2013

The WEEE (Waste Electrical and Electronic Equipment) regulations put responsibilities on producers for the collection and recycling or disposal of electrical and electronic waste. Return of WEEE under these regulations is applicable in the UK and European Union.



This equipment (including all accessories) is not intended for household use. After use the equipment cannot be disposed of as household waste, and the WEEE must be treated, recycled and disposed of in an environmentally sound manner.

Renesas Electronics Europe GmbH can take back end of life equipment. Register for this service at: <https://www.renesas.com/eu/en/support/regional-customer-support/weee>

### 8.3 Safety Standards

- UL 94V-0

## 9. Design and Manufacturing Information

The design and manufacturing information for the FPB-R9A02G021 kit is available in the “FPB-R9A02G021 Design Package” available on [renesas.com/risc-v/fpb-r9a02g021](https://renesas.com/risc-v/fpb-r9a02g021).

- Design package file name: fpb-r9a02g021-v1-designpackage.zip
- Design package contents

**Table 22. FPB-R9A02G021 Board Design Package Contents**

File Type	Content	File / Folder Name
File (PDF)	Schematics	fpb-r9a02g021-v1-schematics
File (PDF)	Mechanical Drawing	fpb-r9a02g021-v1-mechdwg
File (PDF)	3D Drawing	fpb-r9a02g021-v1-3d
File (PDF)	BoM	fpb-r9a02g021-v1-bom
Folder	Manufacturing Files	Manufacturing Files
Folder	Design Files	Design Files-Cadence Allegro

## 10. Website and Support

Visit the following URLs to learn about the kit and the RISC-V microcontrollers, download tools and documentation, and get support.

FPB-R9A02G021 Resources  
 RISC-V Product Information  
 RISC-V Videos  
 Renesas Support

[renesas.com/risc-v/fpb-r9a02g021](https://renesas.com/risc-v/fpb-r9a02g021)  
[renesas.com/risc-v](https://renesas.com/risc-v)  
[renesas.com/risc-v/videos](https://renesas.com/risc-v/videos)  
[renesas.com/support](https://renesas.com/support)

**Revision History**

Rev.	Date	Description	
		Page	Summary
1.00	Oct.31.23	—	Initial release
2.00	Apr.15.24	Disclaimer	Change the link to renesas.com/legal-notice
		4	Added a page for Glossary
		6, 7, 10, 35	Figure 1, 3, 7, 23 and 24 Modified to the figure, which is fitted J5, J6, J15 and J18, which is not fitted R31 and R33
		13	Table 4 Modified the description of J18
		13	Table 4 Deleted the description of R30, R31, R32 and R33
		13	Table 4 Added the description of J5 and J6
		21	Table 11 Modified to the table, which is deleted R30, R31, R32 and R33, which is added J5 and J6
		21	Figure 10 Modified to the figure which is fitted J15
		23	Section 5.2.2 Deleted the description that J15 is not fitted
		23	Section 5.2.2 Added notice for use about J15
		23	Figure 11 Newly added
		24	Table 13 Changed Pin Name of J15-7 to Not used
		35	Section 5.4.1 Modified typo of the port name of the LED1
		38	Table 21 Modified typo of the U3 pin assignment
		40	Section 8.1 Added UKCA
40	Section 8.2 Added WEEE Directive (2012/19/EU) & The Waste Electrical and Electronic Equipment Regulations 2013		

---

FPB-R9A02G021 User's Manual

Publication Date: Oct.31.23    Rev.1.00  
Apr.15.24    Rev.2.00

Published by:    Renesas Electronics Corporation

---

# FPB-R9A02G021 User's Manual