

To our customers,

---

## Old Company Name in Catalogs and Other Documents

---

On April 1<sup>st</sup>, 2010, NEC Electronics Corporation merged with Renesas Technology Corporation, and Renesas Electronics Corporation took over all the business of both companies. Therefore, although the old company name remains in this document, it is a valid Renesas Electronics document. We appreciate your understanding.

Renesas Electronics website: <http://www.renesas.com>

April 1<sup>st</sup>, 2010  
Renesas Electronics Corporation

Issued by: Renesas Electronics Corporation (<http://www.renesas.com>)

Send any inquiries to <http://www.renesas.com/inquiry>.

## Notice

1. All information included in this document is current as of the date this document is issued. Such information, however, is subject to change without any prior notice. Before purchasing or using any Renesas Electronics products listed herein, please confirm the latest product information with a Renesas Electronics sales office. Also, please pay regular and careful attention to additional and different information to be disclosed by Renesas Electronics such as that disclosed through our website.
2. Renesas Electronics does not assume any liability for infringement of patents, copyrights, or other intellectual property rights of third parties by or arising from the use of Renesas Electronics products or technical information described in this document. No license, express, implied or otherwise, is granted hereby under any patents, copyrights or other intellectual property rights of Renesas Electronics or others.
3. You should not alter, modify, copy, or otherwise misappropriate any Renesas Electronics product, whether in whole or in part.
4. Descriptions of circuits, software and other related information in this document are provided only to illustrate the operation of semiconductor products and application examples. You are fully responsible for the incorporation of these circuits, software, and information in the design of your equipment. Renesas Electronics assumes no responsibility for any losses incurred by you or third parties arising from the use of these circuits, software, or information.
5. When exporting the products or technology described in this document, you should comply with the applicable export control laws and regulations and follow the procedures required by such laws and regulations. You should not use Renesas Electronics products or the technology described in this document for any purpose relating to military applications or use by the military, including but not limited to the development of weapons of mass destruction. Renesas Electronics products and technology may not be used for or incorporated into any products or systems whose manufacture, use, or sale is prohibited under any applicable domestic or foreign laws or regulations.
6. Renesas Electronics has used reasonable care in preparing the information included in this document, but Renesas Electronics does not warrant that such information is error free. Renesas Electronics assumes no liability whatsoever for any damages incurred by you resulting from errors in or omissions from the information included herein.
7. Renesas Electronics products are classified according to the following three quality grades: “Standard”, “High Quality”, and “Specific”. The recommended applications for each Renesas Electronics product depends on the product’s quality grade, as indicated below. You must check the quality grade of each Renesas Electronics product before using it in a particular application. You may not use any Renesas Electronics product for any application categorized as “Specific” without the prior written consent of Renesas Electronics. Further, you may not use any Renesas Electronics product for any application for which it is not intended without the prior written consent of Renesas Electronics. Renesas Electronics shall not be in any way liable for any damages or losses incurred by you or third parties arising from the use of any Renesas Electronics product for an application categorized as “Specific” or for which the product is not intended where you have failed to obtain the prior written consent of Renesas Electronics. The quality grade of each Renesas Electronics product is “Standard” unless otherwise expressly specified in a Renesas Electronics data sheets or data books, etc.
  - “Standard”: Computers; office equipment; communications equipment; test and measurement equipment; audio and visual equipment; home electronic appliances; machine tools; personal electronic equipment; and industrial robots.
  - “High Quality”: Transportation equipment (automobiles, trains, ships, etc.); traffic control systems; anti-disaster systems; anti-crime systems; safety equipment; and medical equipment not specifically designed for life support.
  - “Specific”: Aircraft; aerospace equipment; submersible repeaters; nuclear reactor control systems; medical equipment or systems for life support (e.g. artificial life support devices or systems), surgical implantations, or healthcare intervention (e.g. excision, etc.), and any other applications or purposes that pose a direct threat to human life.
8. You should use the Renesas Electronics products described in this document within the range specified by Renesas Electronics, especially with respect to the maximum rating, operating supply voltage range, movement power voltage range, heat radiation characteristics, installation and other product characteristics. Renesas Electronics shall have no liability for malfunctions or damages arising out of the use of Renesas Electronics products beyond such specified ranges.
9. Although Renesas Electronics endeavors to improve the quality and reliability of its products, semiconductor products have specific characteristics such as the occurrence of failure at a certain rate and malfunctions under certain use conditions. Further, Renesas Electronics products are not subject to radiation resistance design. Please be sure to implement safety measures to guard them against the possibility of physical injury, and injury or damage caused by fire in the event of the failure of a Renesas Electronics product, such as safety design for hardware and software including but not limited to redundancy, fire control and malfunction prevention, appropriate treatment for aging degradation or any other appropriate measures. Because the evaluation of microcomputer software alone is very difficult, please evaluate the safety of the final products or system manufactured by you.
10. Please contact a Renesas Electronics sales office for details as to environmental matters such as the environmental compatibility of each Renesas Electronics product. Please use Renesas Electronics products in compliance with all applicable laws and regulations that regulate the inclusion or use of controlled substances, including without limitation, the EU RoHS Directive. Renesas Electronics assumes no liability for damages or losses occurring as a result of your noncompliance with applicable laws and regulations.
11. This document may not be reproduced or duplicated, in any form, in whole or in part, without prior written consent of Renesas Electronics.
12. Please contact a Renesas Electronics sales office if you have any questions regarding the information contained in this document or Renesas Electronics products, or if you have any other inquiries.

(Note 1) “Renesas Electronics” as used in this document means Renesas Electronics Corporation and also includes its majority-owned subsidiaries.

(Note 2) “Renesas Electronics product(s)” means any product developed or manufactured by or for Renesas Electronics.

# 78K0S/KY1+ Flash Programming Manual (Basic) MINICUBE2 version

## STEP 1 Check the Programming Environment

- 78K0S/KY1+ microcontroller with on-chip flash memory (μPD78F921x)
- Programming code (Intel or Motorola hexadecimal format)
- QB-Programmer
- Parameter file (78F921x.PRM (included in PRM78F9234) )
- PC (Windows 98/Me/2000/XP, compliant with USB V1.1 or V2.0)
- USB driver

Off-board programming: Programming environment using adapter board plugged into socket

On-board programming: Programming environment on user board

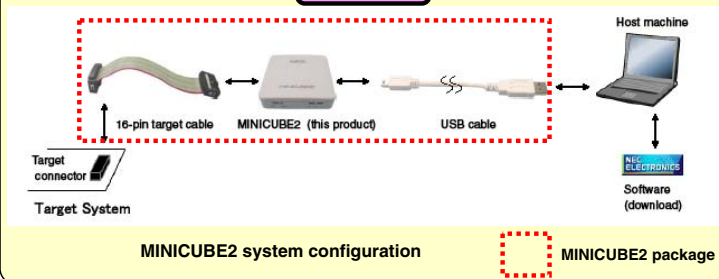
\* For off-board programming, be sure to use an FA adapter (manufactured by NAITO DENSEI MACHIDA MFG. CO., LTD.).

If software has not been installed,

Go to **STEP 2**.

If software is installed and hardware is ready,

Go to **STEP 4**.

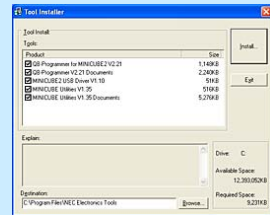


(Mountain fold)

## STEP 2 MINICUBE2 Setup 1

### <1> Set up the MINICUBE2 software

To install QB-Programmer (GUI), launch the executable file downloaded from following NEC Electronics Microcontrollers and Microprocessors Websites.



### NEC Electronics Microcontrollers and Microprocessors Website

#### MINICUBE2

<http://www.necel.com/micro/en/development/asia/minicube2/minicube2.html> (English site)  
Download necessary softwares from "Software download".

#### Software Download

In order to operate the MINICUBE2, special software is required.  
Download the software from the Version-up Service.

Application	Necessary Software
Debug	Debugger Device file
Flash Memory Programming	Programming GUI Parameter file

#### Development Tools Download

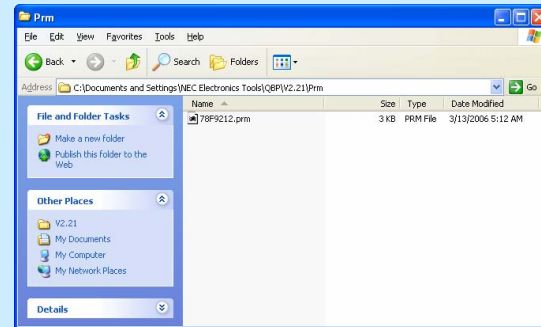
<http://www.necel.com/micro/ods/eng/index.html> (English site)  
Click "Version-up service".



## STEP 2 MINICUBE2 Setup 2

### <2> Set up the parameter file

Download the parameter file from either websites as shown <1>. Run the downloaded self-extracting file. Copy the decompressed parameterfile (78F921x.PRM) to an arbitrary folder.



### <3> Connect your PC

Connect your PC to the MINICUBE2 via a USB interface.

The USB driver is loaded by the Plug & Play operation.

\* Select the "Install the software automatically [recommended]" wizard.

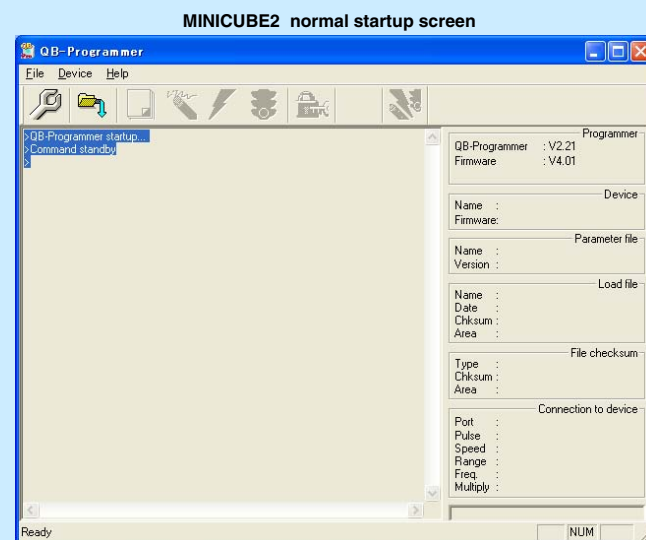


(Valley fold)

## STEP 2 MINICUBE2 Setup 3

### <4> Confirm startup of MINICUBE2

After a normal startup according to the settings in step <3>, the following window is opened.



If a normal startup is confirmed, the software setup is finished.

Select [File] → [Quit] to terminate the software, then disconnect the USB cable from the MINICUBE2.

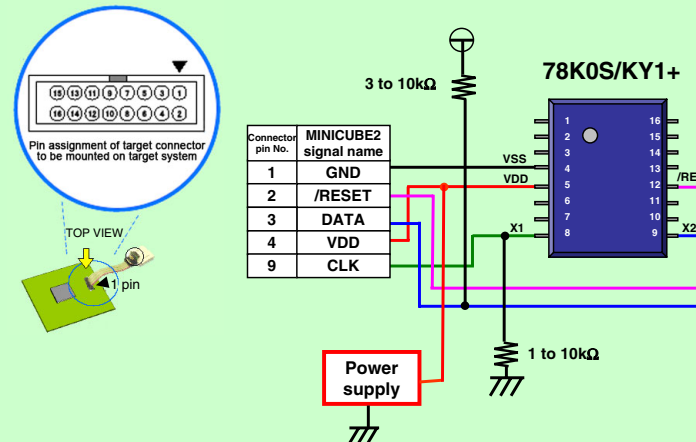
If a normal startup isn't confirmed, see the **Troubleshooting** section.

Go to STEP 3

## STEP 3 On-board Programming (via UART Communication)

Be sure to note the following caution points regarding board design for on-board programming.

- With the MINICUBE2, perform the pin connection on the target board as below figure.
- Even when VDD is being supplied from the target board, the VDD pin should be connected to the MINICUBE2.
- If the signals used during on-board programming are also used during device communication in normal mode, be sure to check whether any circuits need to be isolated.



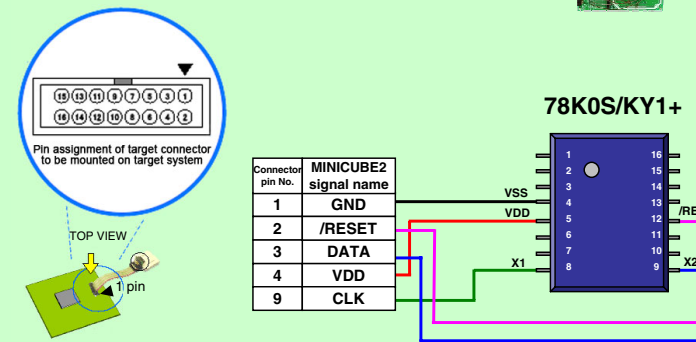
- Remarks
- The clock must be supplied from MINICUBE2 (8MHz).  
If the oscillator is connected to the target board, disconnect it for now before writing.
  - In case of on-board programming, set the power select switch to "T".  
(Power supply of the target system is used.)  
When VDD is supplied from the MINICUBE2, do not exceed the maximum supply current of 100 mA.

Go to STEP 4

(Mountain fold)

## STEP 3 Off-board Programming (via UART Communication)

Wire as follows for off-board programming, then connect to the target cable via the conversion connector.



Remark The clock must be supplied from the MINICUBE2 (8MHz).  
The power can be supplied from it, too. In this case, set Power select switch to "3" or "5".  
For details, refer to **STEP 4**.

### Wiring when using FA-78F9212GR-JJG-RX

FA-78F9212GR-JJG-RX has already been wired. So it is not necessary to wire.

### Other Case

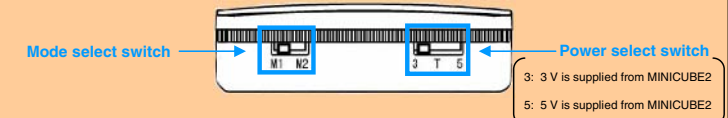
Refer to the above figure for wiring.

Go to STEP 4

## STEP 4 Hardware connection (power supply from MINICUBE2)

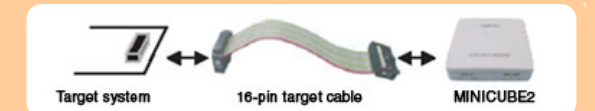
<1> Set the Mode select switch to "M1".

<2> In case of power supply from the MINICUBE2, set the Power select switch to "3" or "5".

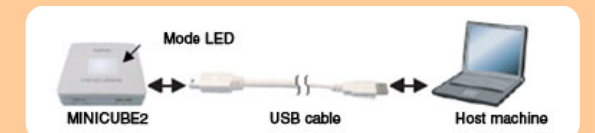


Caution Do not change the switch settings while the USB cable is connected.

<3> Confirm that the target system is not turned on, and then connect the MINICUBE2 to the target system via a target cable.



<4> Connect the MINICUBE2 with the host machine, via a USB cable.  
(The mode LED glows white after connection.)



The power is always supplied after the MINICUBE2 is connected to the host machine.

Caution Be sure to connect according to steps <1> to <4>, in that order. Otherwise, the MINICUBE2 or the target system may be damaged.

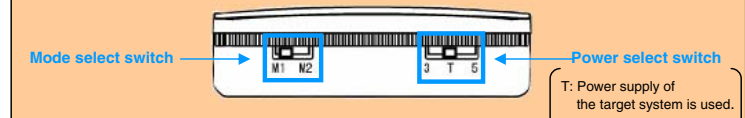
Go to STEP 5

(Valley fold)

## STEP 4 Hardware connection (power supply on a target system)

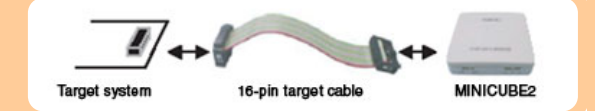
<1> Set the mode select switch to "M1".

<2> In case of power supply from the MINICUBE2, set the Power select switch to "T".

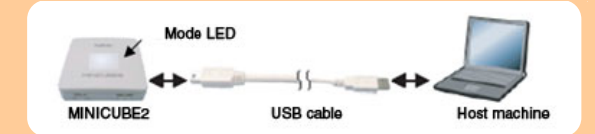


Caution Do not change the switch setting while the USB cable is connected.

<3> Confirm that the target system is not turned on, and then connect the MINICUBE2 to the target system via a target cable.



<4> Connect the MINICUBE2 with the host machine, via a USB cable.  
(The mode LED flashes white after connection.)



<5> Turn on power to the target system.  
(The mode LED glows white after connection.)

Caution Be sure to connect according to steps <1> to <5>, in that order. Otherwise, the MINICUBE2 or the target system may be damaged.

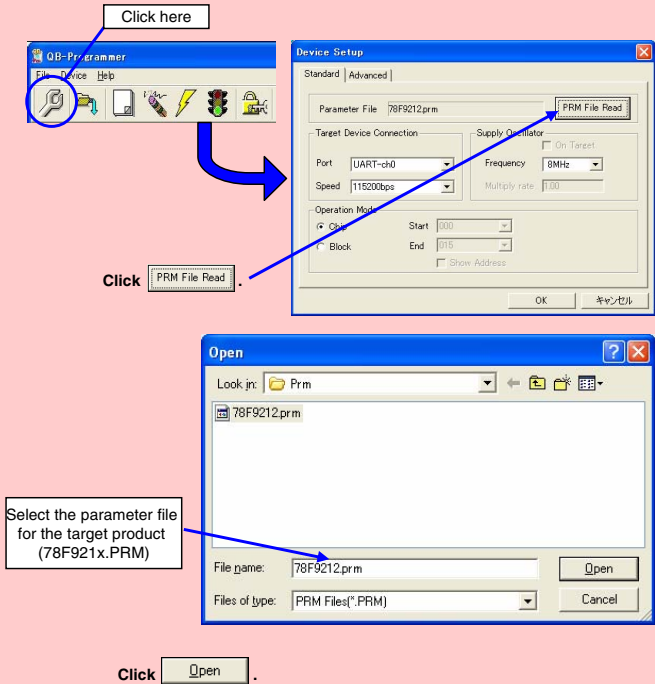
Go to STEP 5



## STEP 5 Software setting 1

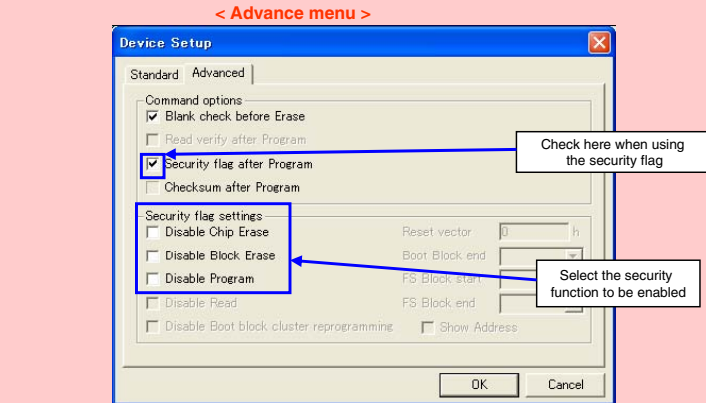
<1> Startup MINICUBE2 software "QB-Programmer" (GUI).

<2> Click the  icon (or select [Device] → [Setup] menu), then select a parameter file.



## STEP 5 Software setting 3

<4> Specify the following security flag settings when using the security flag.



### Description of security flag

**Disable Chip Erase:** This disables deletion of the entire flash memory area.  
**Disable Block Erase:** This disables deletion of blocks in the flash memory area.  
**Disable Program:** This disables the flash memory write operation as well as deletion of blocks in the flash memory area.


The relationship between the security flag enable/disable settings and the corresponding commands is shown below.

	Chip Erase Command	Block Erase Command	Program Command
Disable Chip Erase	Disable	Disable	Enable Note
Disable Block Erase	Enable	Disable	Enable
Disable Program	Enable	Disable	Disable

**Note** Since the Erase command is disabled, previously written data cannot be overwritten.

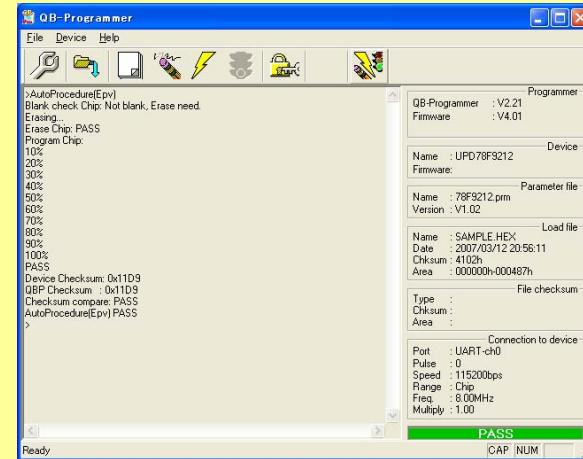
**Remark** [Disable Chip Erase] security function can not be cleared.  
[Disable Program] or [Disable Block Erase] security function can be cleared if the Chip Erase command is executed.

## STEP 6 Ready for Programming!

<6> Click the  icon to run Autoprocedure (EPV).

If "Blank check before Erase" is checked during <3> in **STEP5**, the writing will be executed after automatic blank check.

The mode LED on the MINICUBE2 flashes yellow during execution. When the command execution is completed normally, the mode LED glows green and the following window appears.



## Programming is completed!

If an error occurs, communication with the target device may have failed.

See **Troubleshooting**.

## Trouble During Operation

● Communication with the target device is not possible.

Cause 1: The driver may not be correctly installed.

Action 1: Check the following in the Device Manager of the "System Properties" window.  
• "NEC Electronics IE-PC Interface [MINICUBE2 USB]" is displayed.  
• Alternatively, the "I" or "x" is not prefixed.  
If not, see the **Trouble During Setup**.

Cause 2: There may be an incorrect connection between the target cable and target system.

Action 2: Check if the connections are correct.  
• DATA pin of the MINICUBE2 → X2 pin of the target device.  
• CLK pin of the MINICUBE2 → X1 pin of the target device.

Cause 3: The power may not be correctly supplied to the target device.

Action 3: Check that the power is supplied in the target system.  
If the power is supplied from the MINICUBE2, check if the setting of the Mode select switch and Power select switch are correct.

Cause 4: The PRM file selected in the "Device Setup" window may be incorrect.

Action 4: Download the latest PRM file (78F921x.prm) from the following site.  
Next, select it by clicking on [PRM File Read] in the "Device Setup" window.

NEC Electronics Microcontrollers and Microprocessors Website  
• MINICUBE2  
<http://www.necel.com/micro/en/development/asia/minicube2/minicube2.html>  
• "Development Tools Download" Version-up service  
<http://www.necel.com/micro/ods/eng/index.html>

Cause 5: A security setting may have been made for the programming device.

Action 5: A security setting may have been made for the programming device.  
For details, refer to **Description of security flag** in STEP5.

Cause 6: The power supply capacity of the USB port of the PC may be low (when the Power select switch is set to "3" or "5").

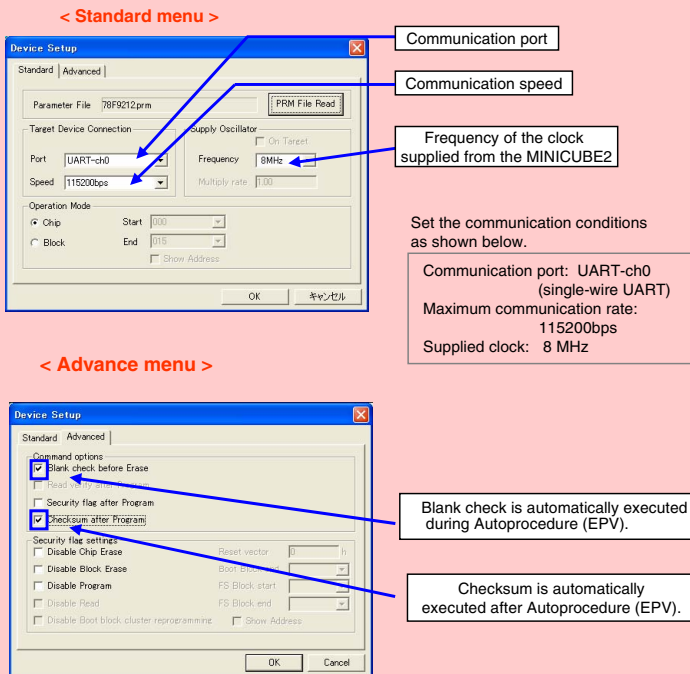
Action 6: If the power select switch is set to "3" or "5", the power supply is 100 mA max., so a power shortage may occur. In such a case, set the power select switch to "T" and then supply power from the target system.

If problems are not solved by any of the above, the flash memory unit itself or the MINICUBE2 may be damaged.


## STEP 5 Software setting 2

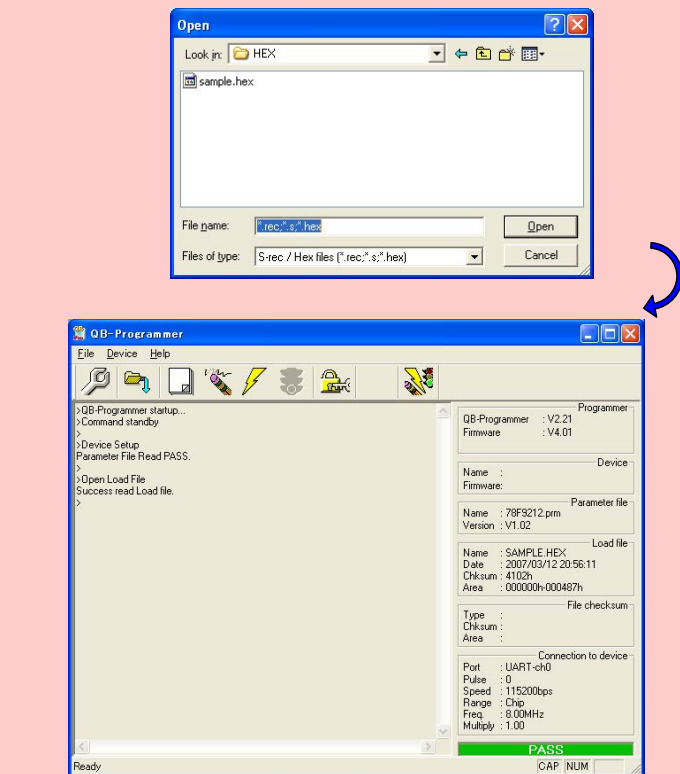
<3> Check the communication conditions and command options to be used.

Click the Standard and Advance tabs to confirm these setting.



## STEP 5 Software setting 4

<5> Click the  icon, then select a writing code (HEX file) to download to the MINICUBE2.



## Troubleshooting

### Trouble During Setup

● When the MINICUBE2 is connected to the host machine via a USB interface, the driver is not recognized by Plug and Play.

Cause: The USB connector may not be inserted properly into the USB port of the host machine.

Action: Check that the USB connector is fully inserted into the USB port of the PC.  
Alternatively, disconnect the USB connector, then insert the USB connector again later.

● The USB driver file cannot be found at a specified location.

Cause: The USB driver may not have been installed normally.

Action: Refer to CHAPTER 2 SOFTWARE INSTALLATION in QB-Programmer Operation User's Manual (U18527E) and reinstall the USB driver.  
If the file is requested by Plug and Play, specify the following path for the USB driver.

C:\Program Files\NEC Electronics Tools\MQB2ALL

● The MINICUBE2 is connected to the host machine but the Power LED on the MINICUBE2 is not turned on.

Cause: The USB port of the MINICUBE2 or the host machine may have a defect.

Action: Check a defect of the MINICUBE2 using the MINICUBE2 diagnostic tool. If a defect is found, consider repair. If there is no defect, try connecting the MINICUBE2 to another machine.

● The "Add New Hardware Wizard" screen is displayed when the MINICUBE2 is connected to a PC.

Cause: If the USB connector of the MINICUBE2 is not inserted into the USB port during installation but into another USB port, the MINICUBE2 may be recognized as a new hardware item.

Action: Select "Install the software automatically [recommended]" and install the USB driver.

For further information, please contact:

NEC Electronics Corporation  
1753, Shimonumabe, Nakahara-ku,  
Kawasaki, Kanagawa 211-8668,  
Japan  
Tel: 044-435-5111  
<http://www.necel.com/>

[America]

NEC Electronics America, Inc.  
2880 Scott Blvd.  
Santa Clara, CA 95050-2554, U.S.A.  
Tel: 408-588-6000  
800-366-9782  
<http://www.am.necel.com/>

[Europe]

NEC Electronics (Europe) GmbH  
Arcadiastrasse 10  
40472 Düsseldorf, Germany  
Tel: 0211-65030  
<http://www.eu.necel.com/>

Hanover Office

Podbielskistrasse 166 B  
30177 Hannover  
Tel: 0511 33 40 2-0

Munich Office

Werner-Eckert-Strasse 9  
81829 München  
Tel: 0 89 92 10 03-0

Stuttgart Office

Industriestrasse 3  
70565 Stuttgart  
Tel: 0 711 99 01 0-0

United Kingdom Branch

Cygnus House, Sunrise Parkway  
Lindford Wood, Milton Keynes  
MK14 6NP, U.K.  
Tel: 01908-691-133

Succursale Française

9, rue Paul Daufier, B.P. 52  
78142 Velizy-Villacoublay Cedex  
France  
Tel: 01-3067-5800

Succursale en España

Juan Esplandiu, 15  
28007 Madrid, Spain  
Tel: 091-504-2787

Tyskland Filial

Täby Centrum  
Entrance S (7th floor)  
18322 Täby, Sweden  
Tel: 08 638 72 00

Filiale Italiana

Via Fabio Filzi, 25/A  
20124 Milano, Italy  
Tel: 02-667541

Branch The Netherlands

Steigerweg 6  
5616 HS Eindhoven  
The Netherlands  
Tel: 040 285 40 10

[Asia & Oceania]

NEC Electronics (China) Co., Ltd.  
7th Floor, Quantum Plaza, No. 27 ZhichunLu Haidian  
District, Beijing 100083, P.R.China  
Tel: 010-8235-1155  
<http://www.cn.necel.com/>

Shanghai Branch

Room 2509-2510, Bank of China Tower,  
200 Yincheng Road Central,  
Pudong New Area, Shanghai, P.R.China P.C.200120  
Tel: 021-6888-5400  
<http://www.cn.necel.com/>

Shenzhen Branch

Unit 01, 39/F, Excellence Times Square Building,  
No. 4068 Yi Tian Road, Futian District, Shenzhen,  
P.R.China P.C.518048  
Tel: 0755-8282-9800  
<http://www.cn.necel.com/>

NEC Electronics Hong Kong Ltd.

Unit 1601-1613, 16/F, Tower 2, Grand Century Place,  
193 Prince Edward Road West, Mongkok, Kowloon, Hong Kong  
Tel: 2886-9318  
<http://www.hk.necel.com/>

NEC Electronics Taiwan Ltd.

7F, No. 363 Fu Shing North Road  
Taipei, Taiwan, R. O. C.  
Tel: 02-8175-9600  
<http://www.tw.necel.com/>

NEC Electronics Singapore Pte. Ltd.

238A, Thomson Road,  
Singapore 307684  
Tel: 6253-8311  
<http://www.sg.necel.com/>

NEC Electronics Korea Ltd.

11F, Samik Laved or Bldg., 720-2,  
Yoksam-Dong, Kangnam-Ku,  
Seoul, 135-080, Korea  
Tel: 02-558-3737  
<http://www.kr.necel.com/>

Document No. U19226EJ1V01F00 (1st edition)

Date Published August 2008 NS

© NEC Electronics Corporation 2008