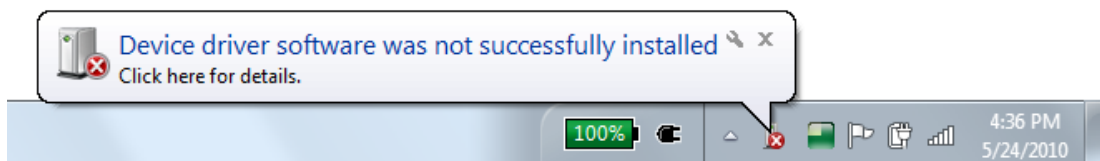


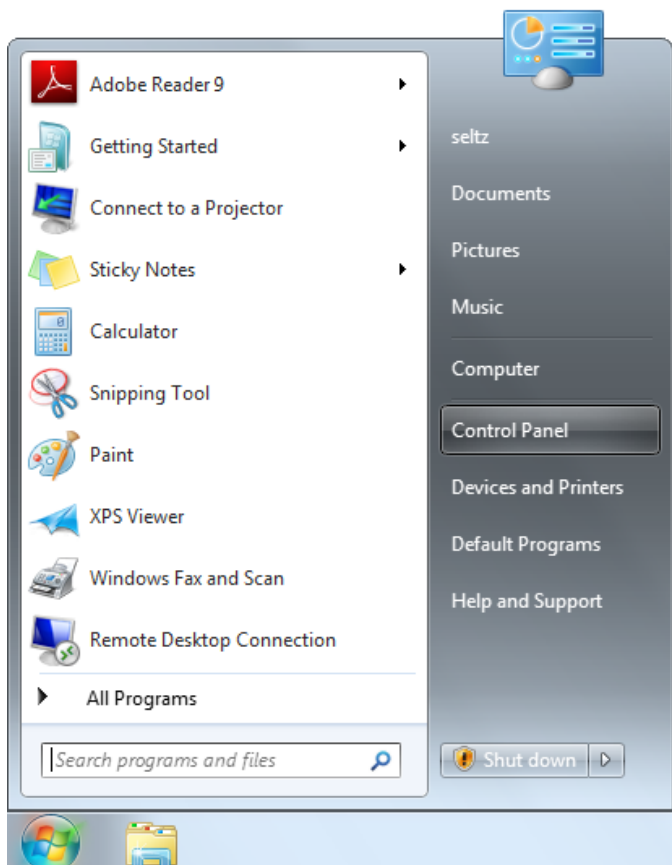
# Intersil PMBus Interface Installation Directions (Windows 7 x86 and x64):

- 1) Before proceeding, locate the “PMBus Interface Install Guide - Win7 x86 and x64” on Intersil's website: [intersil.com/powernavigator](http://intersil.com/powernavigator).
- 2) Plug the USB Dongle into the computer. You should see the green led on the dongle light up.
- 3) You may see a popup from the system tray that looks like this:

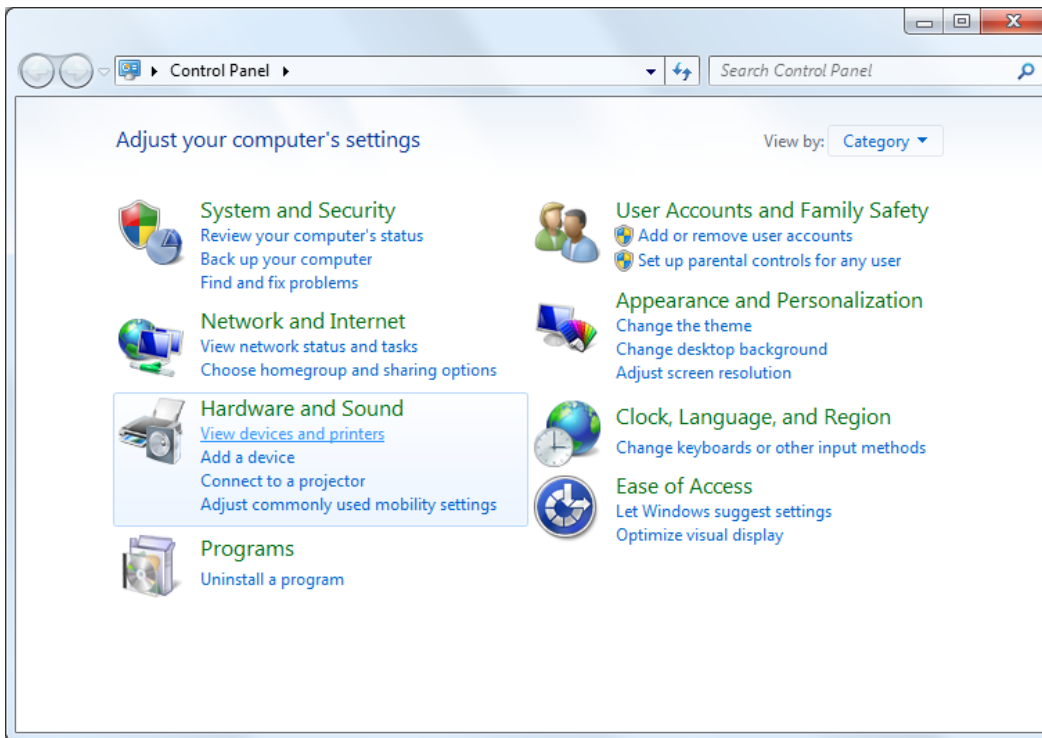


Ignore this error, we will resolve it by manually installing the device driver.

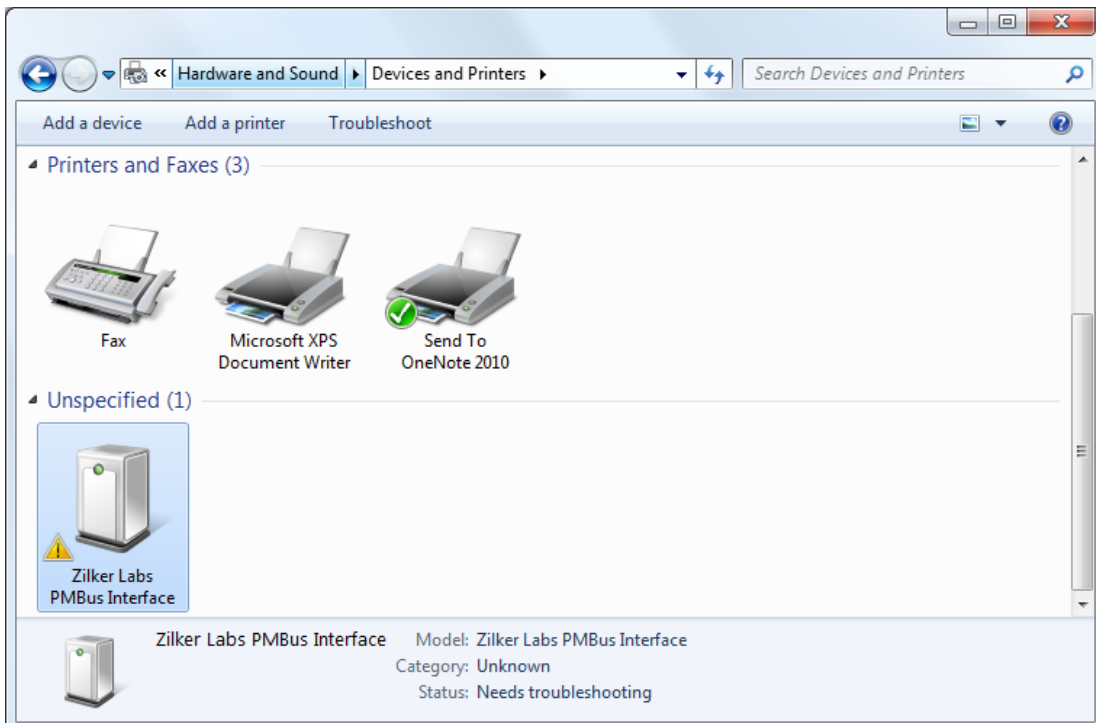
- 4) Go to the Start Menu, click on Control Panel



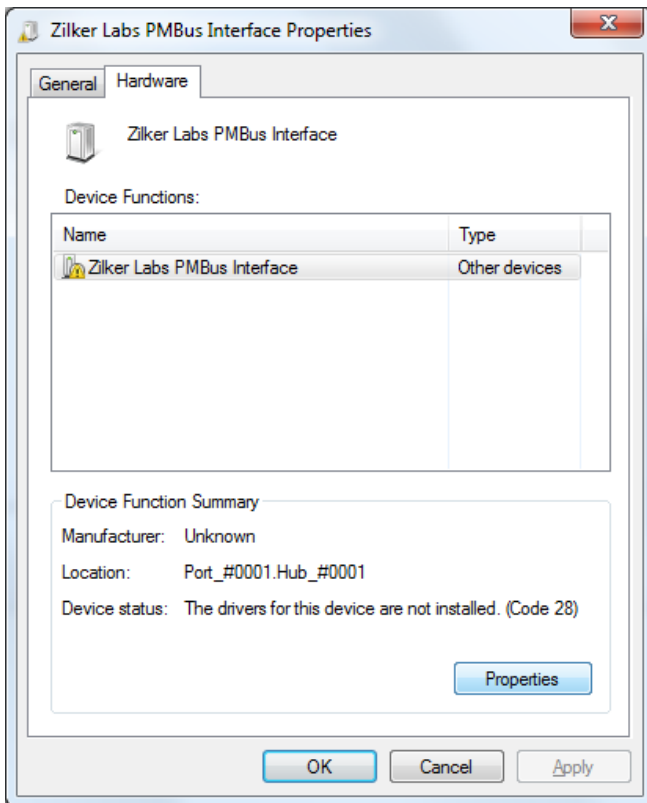
## 5) In Control Panel, click on “View devices and printers”



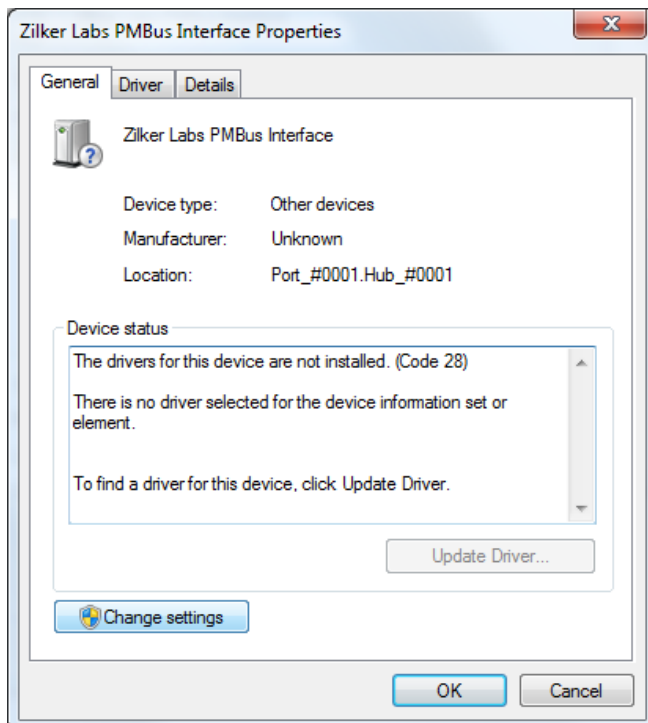
## 6) Scroll down the list of devices to find the Intersil Zilker Labs PMBus Interface. Double click on its icon.



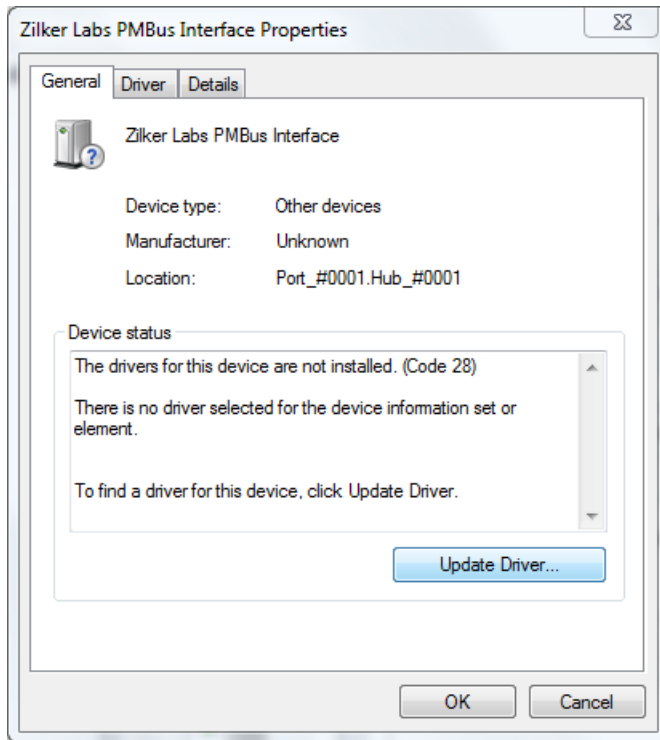
7) In the Device information menu, click Properties:



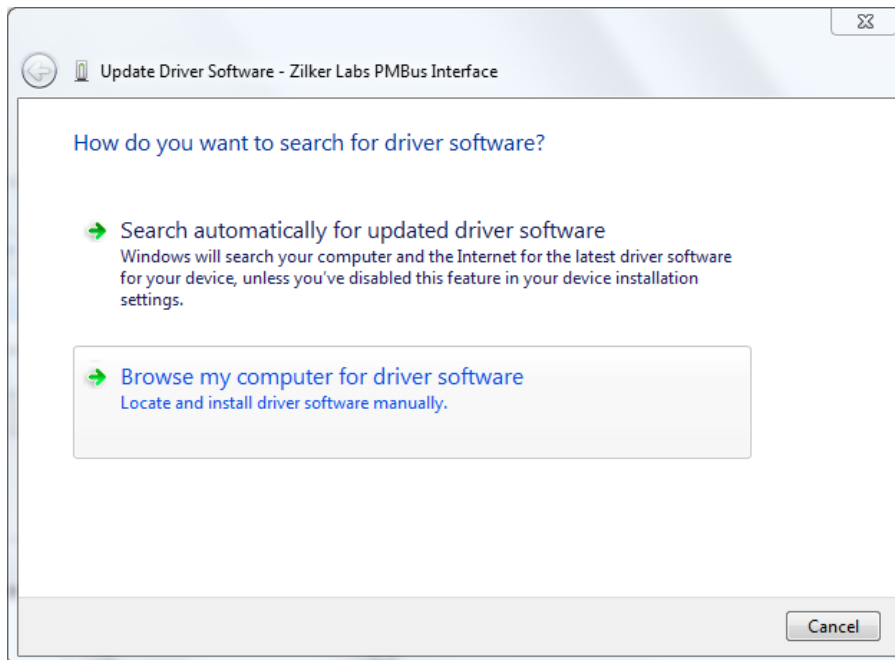
8) In the Properties menu, you may need to click the “Change Settings” menu. Click this.



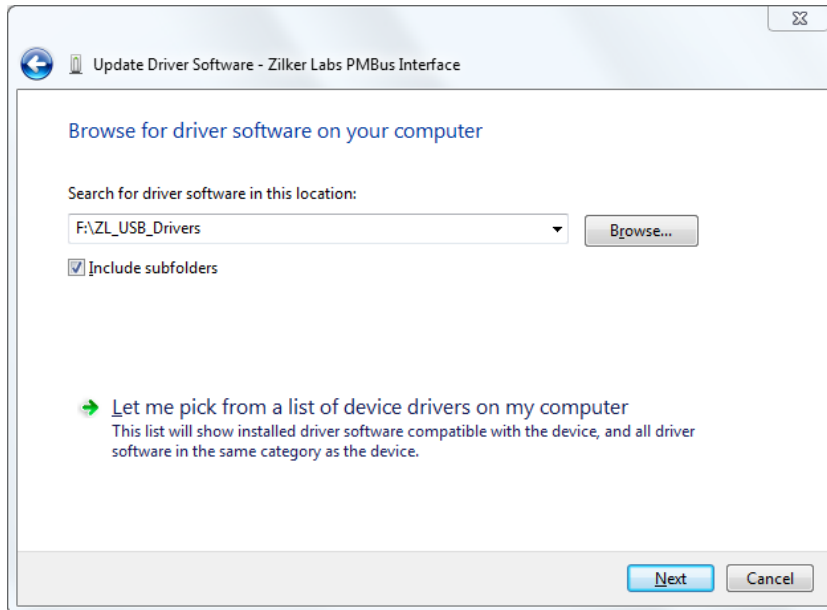
9) You should now see the “Update Driver...” button available.  
Click it.



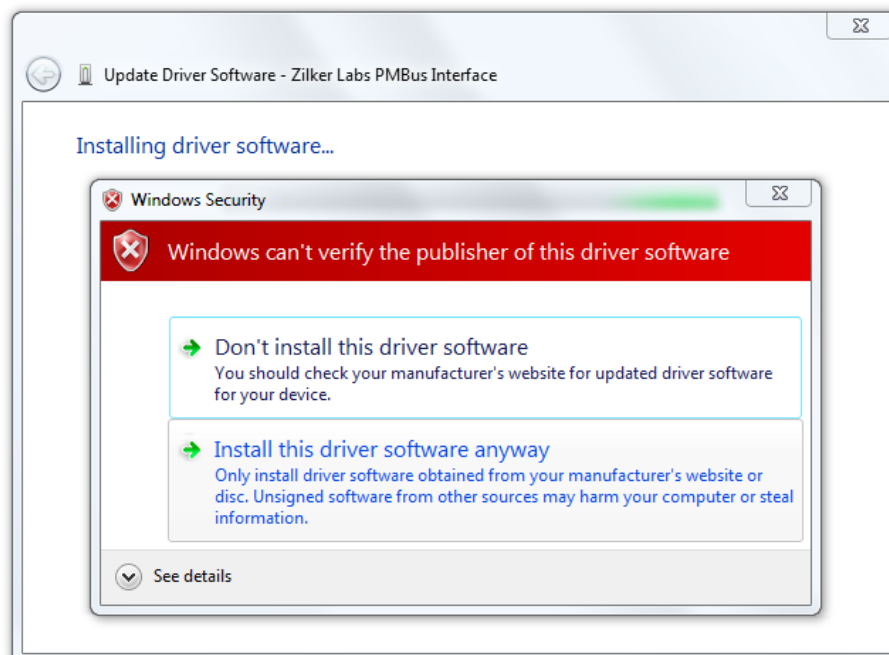
10) You will see two options for driver installation. Select “Browse my computer for driver software”



**11) Browse to the ZL\_USB\_Drivers directory, and click Next to install the drivers.**



**12) You will see a security warning about the driver installation. This is because we use a renamed version of a WHQL-certified driver. Click "Install this driver software anyway" to continue.**



**13) Installation should now be complete. You may now connect the usb dongle to your Intersil Zilker Labs devices and run**

