

Test Report

No. : KA/2020/90831

Date : 2020/09/16

Page: 1 of 12

SUMITOMO BAKELITE (TAIWAN) CO., LTD.

NO. 1, HWA SYI RD., TA FA INDUSTRIAL DISTRICT, TA LIAO, KAOHSIUNG, TAIWAN

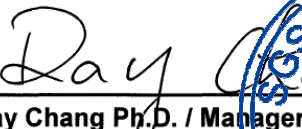

The following sample(s) was/were submitted and identified by/on behalf of the applicant as :

Sample Submitted By : SUMITOMO BAKELITE (TAIWAN) CO., LTD.
Sample Description : EPOXY MOLDING COMPOUND
Style/Item No. : EME-G700L SERIES
Sample Receiving Date : 2020/09/10
Testing Period : 2020/09/10 to 2020/09/16

=====
Test Requested : (1) As specified by client, with reference to RoHS 2011/65/EU Annex II and amending Directive (EU) 2015/863 to determine Cadmium, Lead, Mercury, Cr(VI), PBBs, PBDEs, DBP, BBP, DEHP, DIBP contents in the submitted sample(s).
(2) Please refer to next pages for the other item(s).

Test Result(s) : Please refer to next page(s).

Conclusion : (1) Based on the performed tests on submitted sample(s), the test results of Cadmium, Lead, Mercury, Cr(VI), PBBs, PBDEs, DBP, BBP, DEHP, DIBP comply with the limits as set by RoHS Directive (EU) 2015/863 amending Annex II to Directive 2011/65/EU.


Ray Chang Ph.D. / Manager
Signed for and on behalf of
SGS Taiwan Limited
Chemical Laboratory-Kaohsiung




PIN CODE: 3CB24B3A

This document is issued by the Company subject to its General Conditions of Service printed overleaf, available on request or accessible at <https://www.sgs.com.tw/terms-of-service> and, for electronic format documents, subject to Terms and Conditions for Electronic Documents at <https://www.sgs.com.tw/terms-of-service>. Attention is drawn to the limitation of liability, indemnification and jurisdiction issues defined therein. Any holder of this document is advised that information contained hereon reflects the Company's findings at the time of its intervention only and within the limits of client's instruction, if any. The Company's sole responsibility is to its Client and this document does not exonerate parties to a transaction from exercising all their rights and obligations under the transaction documents. This document cannot be reproduced, except in full, without prior written approval of the Company. Any unauthorized alteration, forgery or falsification of the content or appearance of this document is unlawful and offenders may be prosecuted to the fullest extent of the law. Unless otherwise stated the results shown in this test report refer only to the sample(s) tested.

Test Report

No. : KA/2020/90831

Date : 2020/09/16

Page: 2 of 12

SUMITOMO BAKELITE (TAIWAN) CO., LTD.

NO. 1, HWA SYI RD., TA FA INDUSTRIAL DISTRICT, TA LIAO, KAOHSIUNG, TAIWAN

Test Result(s)

PART NAME NO.1 : BLACK EPOXY MOLDING COMPOUND

Test Item (s)	Unit	Method	MDL	Result	Limit	
				No.1		
Cadmium (Cd)	mg/kg	With reference to IEC 62321-5: 2013 and performed by ICP-OES.	2	n.d.	100	
Lead (Pb)	mg/kg	With reference to IEC 62321-5: 2013 and performed by ICP-OES.	2	n.d.	1000	
Mercury (Hg)	mg/kg	With reference to IEC 62321-4:2013+ AMD1:2017 and performed by ICP-OES.	2	n.d.	1000	
Hexavalent Chromium Cr(VI)	mg/kg	With reference to IEC 62321-7-2:2017 and performed by UV-VIS.	8	n.d.	1000	
Sum of PBBs	mg/kg	With reference to IEC 62321-6:2015 and performed by GC/MS.	-	n.d.	1000	
Monobromobiphenyl	mg/kg		5	n.d.	-	
Dibromobiphenyl	mg/kg		5	n.d.	-	
Tribromobiphenyl	mg/kg		5	n.d.	-	
Tetrabromobiphenyl	mg/kg		5	n.d.	-	
Pentabromobiphenyl	mg/kg		5	n.d.	-	
Hexabromobiphenyl	mg/kg		5	n.d.	-	
Heptabromobiphenyl	mg/kg		5	n.d.	-	
Octabromobiphenyl	mg/kg		5	n.d.	-	
Nonabromobiphenyl	mg/kg		5	n.d.	-	
Decabromobiphenyl	mg/kg		5	n.d.	-	
Sum of PBDEs	mg/kg		With reference to IEC 62321-6:2015 and performed by GC/MS.	-	n.d.	1000
Monobromodiphenyl ether	mg/kg			5	n.d.	-
Dibromodiphenyl ether	mg/kg	5		n.d.	-	
Tribromodiphenyl ether	mg/kg	5		n.d.	-	
Tetrabromodiphenyl ether	mg/kg	5		n.d.	-	
Pentabromodiphenyl ether	mg/kg	5		n.d.	-	
Hexabromodiphenyl ether	mg/kg	5		n.d.	-	
Heptabromodiphenyl ether	mg/kg	5		n.d.	-	
Octabromodiphenyl ether	mg/kg	5		n.d.	-	
Nonabromodiphenyl ether	mg/kg	5		n.d.	-	
Decabromodiphenyl ether	mg/kg	5	n.d.	-		

This document is issued by the Company subject to its General Conditions of Service printed overleaf, available on request or accessible at <https://www.sgs.com.tw/terms-of-service> and, for electronic format documents, subject to Terms and Conditions for Electronic Documents at <https://www.sgs.com.tw/terms-of-service>. Attention is drawn to the limitation of liability, indemnification and jurisdiction issues defined therein. Any holder of this document is advised that information contained hereon reflects the Company's findings at the time of its intervention only and within the limits of client's instruction, if any. The Company's sole responsibility is to its Client and this document does not exonerate parties to a transaction from exercising all their rights and obligations under the transaction documents. This document cannot be reproduced, except in full, without prior written approval of the Company. Any unauthorized alteration, forgery or falsification of the content or appearance of this document is unlawful and offenders may be prosecuted to the fullest extent of the law. Unless otherwise stated the results shown in this test report refer only to the sample(s) tested.

Test Report

No. : KA/2020/90831

Date : 2020/09/16

Page: 3 of 12

SUMITOMO BAKELITE (TAIWAN) CO., LTD.

NO. 1, HWA SYI RD., TA FA INDUSTRIAL DISTRICT, TA LIAO, KAOHSIUNG, TAIWAN

Test Item (s)	Unit	Method	MDL	Result	Limit
				No.1	
Antimony (Sb)	mg/kg	With reference to US EPA 3052: 1996. Analysis was performed by ICP-OES.	2	n.d.	-
Beryllium (Be)	mg/kg	With reference to US EPA 3052: 1996. Analysis was performed by ICP-OES.	2	n.d.	-
Hexabromocyclododecane (HBCDD) and all major diastereoisomers identified (α -HBCDD, β -HBCDD, γ -HBCDD) (CAS No.: 25637-99-4 and 3194-55-6 (134237-51-7, 134237-50-6, 134237-52-8))	mg/kg	With reference to IEC 62321: 2008. Analysis was performed by GC/MS.	5	n.d.	-
PFOA and its salts (CAS No.: 335-67-1 and its salts)	mg/kg	With reference to CEN/TS 15968 (2010). Analysis was performed by LC/MSMS.	0.01	n.d.	-
PFOS and its salts (CAS No.: 1763-23-1 and its salts)	mg/kg	With reference to CEN/TS 15968 (2010). Analysis was performed by LC/MSMS.	0.01	n.d.	-
Halogen					
Halogen-Fluorine (F) (CAS No.: 14762-94-8)	mg/kg	With reference to BS EN 14582:2016. Analysis was performed by IC.	50	n.d.	-
Halogen-Chlorine (Cl) (CAS No.: 22537-15-1)	mg/kg	With reference to BS EN 14582:2016. Analysis was performed by IC.	50	n.d.	-
Halogen-Bromine (Br) (CAS No.: 10097-32-2)	mg/kg	With reference to BS EN 14582:2016. Analysis was performed by IC.	50	n.d.	-
Halogen-Iodine (I) (CAS No.: 14362-44-8)	mg/kg	With reference to BS EN 14582:2016. Analysis was performed by IC.	50	n.d.	-
Phthalates					
DBP (Dibutyl phthalate) (CAS No.: 84-74-2)	mg/kg	With reference to IEC 62321-8:2017. Analysis was performed by GC/MS.	50	n.d.	1000
DEHP (Di- (2-ethylhexyl) phthalate) (CAS No.: 117-81-7)	mg/kg	With reference to IEC 62321-8:2017. Analysis was performed by GC/MS.	50	n.d.	1000
DIBP (Di-isobutyl phthalate) (CAS No.: 84-69-5)	mg/kg	With reference to IEC 62321-8:2017. Analysis was performed by GC/MS.	50	n.d.	1000
BBP (Butyl Benzyl phthalate) (CAS No.: 85-68-7)	mg/kg	With reference to IEC 62321-8:2017. Analysis was performed by GC/MS.	50	n.d.	1000
DIPP (Diisopentyl Phthalat) (CAS No.: 605-50-5)	mg/kg	With reference to IEC 62321-8:2017. Analysis was performed by GC/MS.	50	n.d.	-
DINP (Di-isononyl phthalate) (CAS No.: 28553-12-0, 68515-48-0)	mg/kg	With reference to IEC 62321-8:2017. Analysis was performed by GC/MS.	50	n.d.	-

This document is issued by the Company subject to its General Conditions of Service printed overleaf, available on request or accessible at <https://www.sgs.com.tw/terms-of-service> and, for electronic format documents, subject to Terms and Conditions for Electronic Documents at <https://www.sgs.com.tw/terms-of-service>. Attention is drawn to the limitation of liability, indemnification and jurisdiction issues defined therein. Any holder of this document is advised that information contained hereon reflects the Company's findings at the time of its intervention only and within the limits of client's instruction, if any. The Company's sole responsibility is to its Client and this document does not exonerate parties to a transaction from exercising all their rights and obligations under the transaction documents. This document cannot be reproduced, except in full, without prior written approval of the Company. Any unauthorized alteration, forgery or falsification of the content or appearance of this document is unlawful and offenders may be prosecuted to the fullest extent of the law. Unless otherwise stated the results shown in this test report refer only to the sample(s) tested.

Test Report

No. : KA/2020/90831

Date : 2020/09/16

Page: 4 of 12

SUMITOMO BAKELITE (TAIWAN) CO., LTD.

NO. 1, HWA SYI RD., TA FA INDUSTRIAL DISTRICT, TA LIAO, KAOHSIUNG, TAIWAN

Test Item (s)	Unit	Method	MDL	Result	Limit
				No.1	
DNOP (Di-n-octyl phthalate) (CAS No.: 117-84-0)	mg/kg	With reference to IEC 62321-8:2017. Analysis was performed by GC/MS.	50	n.d.	-
DNHP (Di-n-hexyl phthalate) (CAS No.: 84-75-3)	mg/kg	With reference to IEC 62321-8:2017. Analysis was performed by GC/MS.	50	n.d.	-
DMEP (Bis (2-methoxyethyl) phthalate) (CAS No.: 117-82-8)	mg/kg	With reference to IEC 62321-8:2017. Analysis was performed by GC/MS.	50	n.d.	-
DPP (Di-pentyl phthalate) (CAS No.: 131-18-0)	mg/kg	With reference to IEC 62321-8:2017. Analysis was performed by GC/MS.	50	n.d.	-
DIHP (1,2-Benzenedicarboxylic acid, di-C6-8-branched alkyl esters, C7-rich) (CAS No.: 71888-89-6)	mg/kg	With reference to IEC 62321-8:2017. Analysis was performed by GC/MS.	50	n.d.	-
DHNUP (1,2-Benzenedicarboxylic acid, di-C7-11-branched and linear alkyl esters) (CAS No.: 68515-42-4)	mg/kg	With reference to IEC 62321-8:2017. Analysis was performed by GC/MS.	50	n.d.	-
DIDP (Di-isodecyl phthalate) (CAS No.: 26761-40-0; 68515-49-1)	mg/kg	With reference to IEC 62321-8:2017. Analysis was performed by GC/MS.	50	n.d.	-

Note :

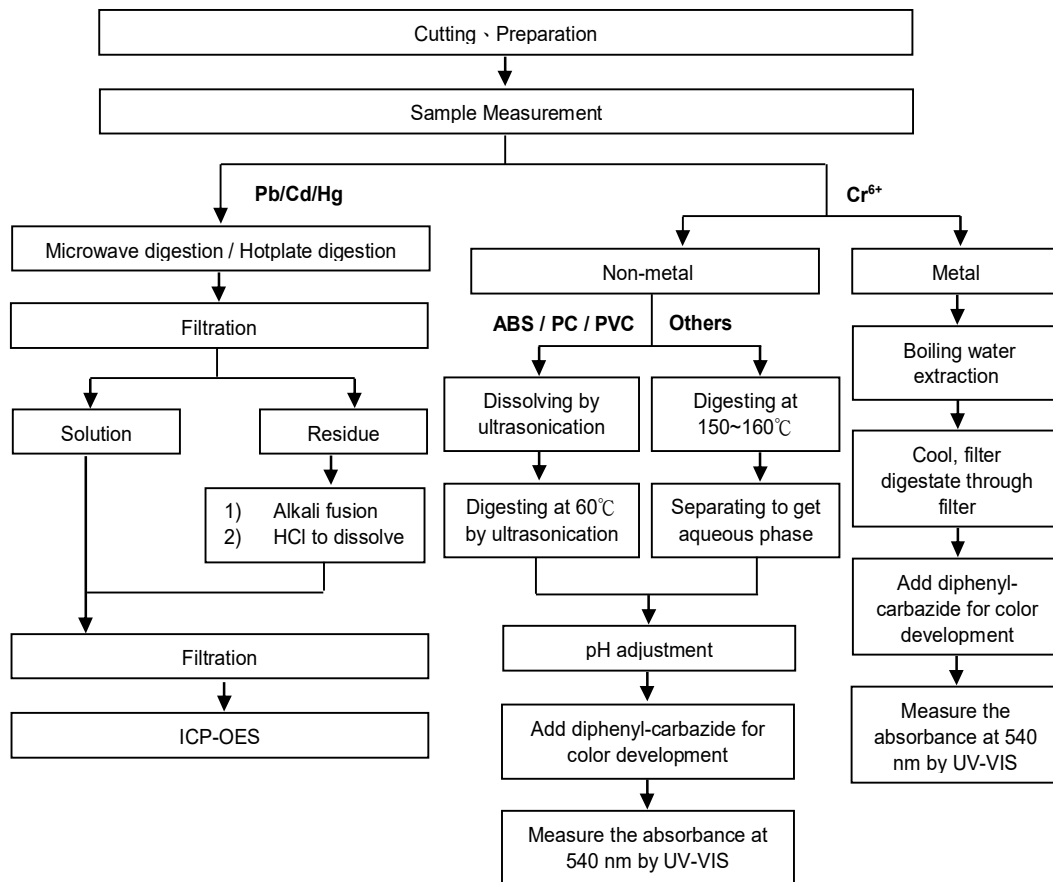
1. mg/kg = ppm ; 0.1wt% = 1000ppm
2. n.d. = Not Detected
3. MDL = Method Detection Limit
4. " - " = Not Regulated
5. PFOS and its salts including CAS No.: 29081-56-9, 2795-39-3, 29457-72-5, 70225-14-8, 56773-42-3, 251099-16-8, 307-35-7.
6. PFOA and its salts including CAS No.: 3825-26-1, 335-95-5, 2395-00-8, 335-93-3, 335-66-0.
7. The statement of compliance conformity is based on comparison of testing results and limits.

SUMITOMO BAKELITE (TAIWAN) CO., LTD.

NO. 1, HWA SYI RD., TA FA INDUSTRIAL DISTRICT, TA LIAO, KAOHSIUNG, TAIWAN

Analytical flow chart of Heavy Metal

These samples were dissolved totally by pre-conditioning method according to below flow chart. (Cr⁶⁺ test method excluded)



This document is issued by the Company subject to its General Conditions of Service printed overleaf, available on request or accessible at <https://www.sgs.com.tw/terms-of-service> and, for electronic format documents, subject to Terms and Conditions for Electronic Documents at <https://www.sgs.com.tw/terms-of-service>. Attention is drawn to the limitation of liability, indemnification and jurisdiction issues defined therein. Any holder of this document is advised that information contained hereon reflects the Company's findings at the time of its intervention only and within the limits of client's instruction, if any. The Company's sole responsibility is to its Client and this document does not exonerate parties to a transaction from exercising all their rights and obligations under the transaction documents. This document cannot be reproduced, except in full, without prior written approval of the Company. Any unauthorized alteration, forgery or falsification of the content or appearance of this document is unlawful and offenders may be prosecuted to the fullest extent of the law. Unless otherwise stated the results shown in this test report refer only to the sample(s) tested.

Test Report

No. : KA/2020/90831

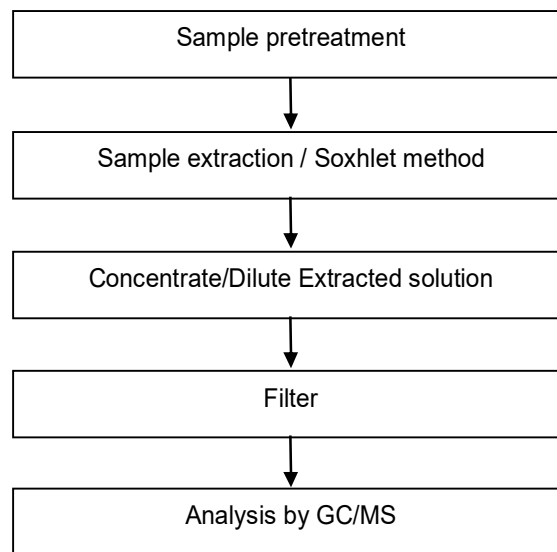
Date : 2020/09/16

Page: 6 of 12

SUMITOMO BAKELITE (TAIWAN) CO., LTD.

NO. 1, HWA SYI RD., TA FA INDUSTRIAL DISTRICT, TA LIAO, KAOHSIUNG, TAIWAN

PBB/PBDE analytical FLOW CHART



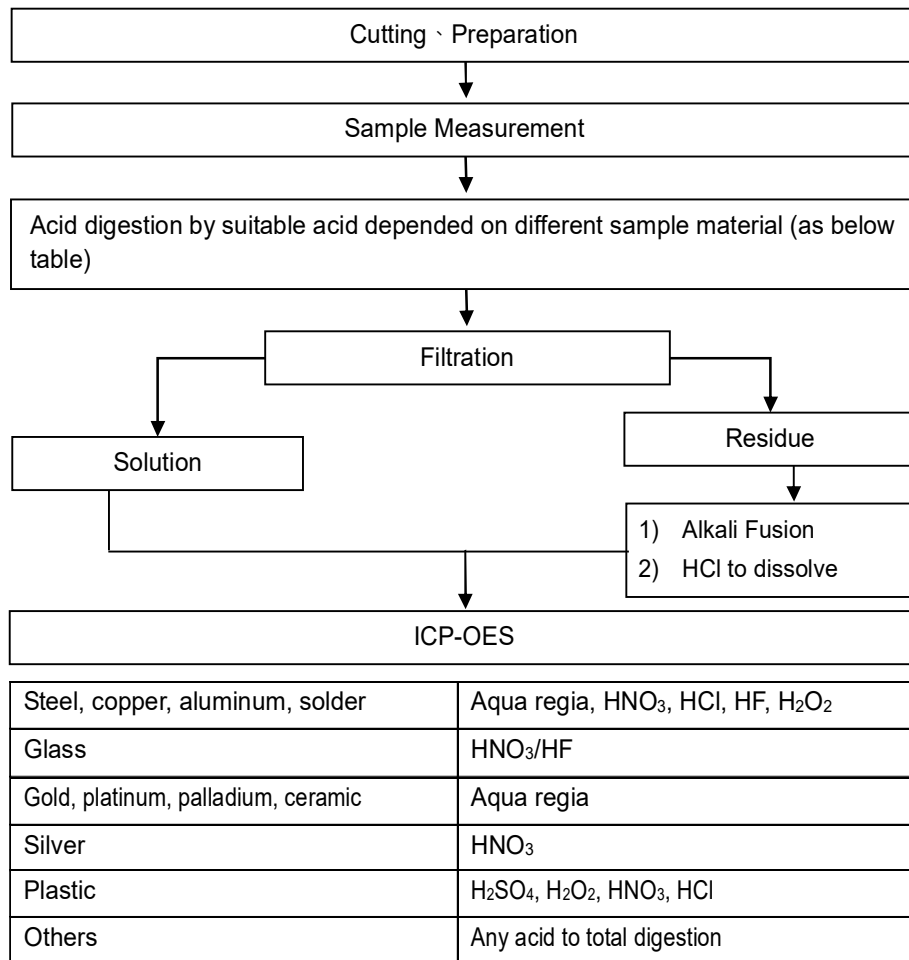
This document is issued by the Company subject to its General Conditions of Service printed overleaf, available on request or accessible at <https://www.sgs.com.tw/terms-of-service> and, for electronic format documents, subject to Terms and Conditions for Electronic Documents at <https://www.sgs.com.tw/terms-of-service>. Attention is drawn to the limitation of liability, indemnification and jurisdiction issues defined therein. Any holder of this document is advised that information contained hereon reflects the Company's findings at the time of its intervention only and within the limits of client's instruction, if any. The Company's sole responsibility is to its Client and this document does not exonerate parties to a transaction from exercising all their rights and obligations under the transaction documents. This document cannot be reproduced, except in full, without prior written approval of the Company. Any unauthorized alteration, forgery or falsification of the content or appearance of this document is unlawful and offenders may be prosecuted to the fullest extent of the law. Unless otherwise stated the results shown in this test report refer only to the sample(s) tested.

SUMITOMO BAKELITE (TAIWAN) CO., LTD.

NO. 1, HWA SYI RD., TA FA INDUSTRIAL DISTRICT, TA LIAO, KAOHSIUNG, TAIWAN

Flow Chart of digestion for the elements analysis performed by ICP-OES

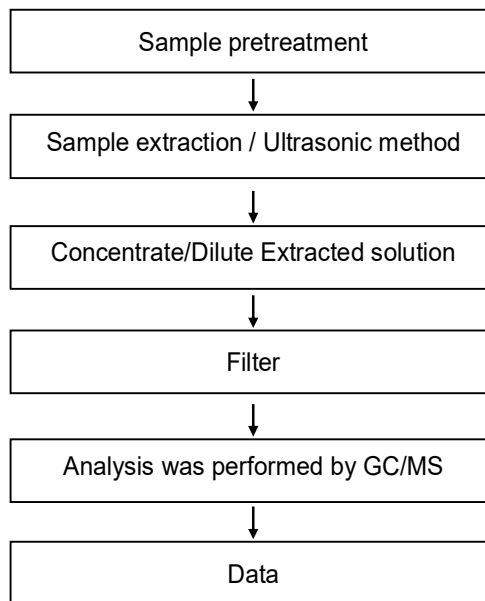
These samples were dissolved totally by pre-conditioning method according to below flow chart.



SUMITOMO BAKELITE (TAIWAN) CO., LTD.

NO. 1, HWA SYI RD., TA FA INDUSTRIAL DISTRICT, TA LIAO, KAOHSIUNG, TAIWAN

HBCDD analytical flow chart



This document is issued by the Company subject to its General Conditions of Service printed overleaf, available on request or accessible at <https://www.sgs.com.tw/terms-of-service> and, for electronic format documents, subject to Terms and Conditions for Electronic Documents at <https://www.sgs.com.tw/terms-of-service>. Attention is drawn to the limitation of liability, indemnification and jurisdiction issues defined therein. Any holder of this document is advised that information contained hereon reflects the Company's findings at the time of its intervention only and within the limits of client's instruction, if any. The Company's sole responsibility is to its Client and this document does not exonerate parties to a transaction from exercising all their rights and obligations under the transaction documents. This document cannot be reproduced, except in full, without prior written approval of the Company. Any unauthorized alteration, forgery or falsification of the content or appearance of this document is unlawful and offenders may be prosecuted to the fullest extent of the law. Unless otherwise stated the results shown in this test report refer only to the sample(s) tested.

Test Report

No. : KA/2020/90831

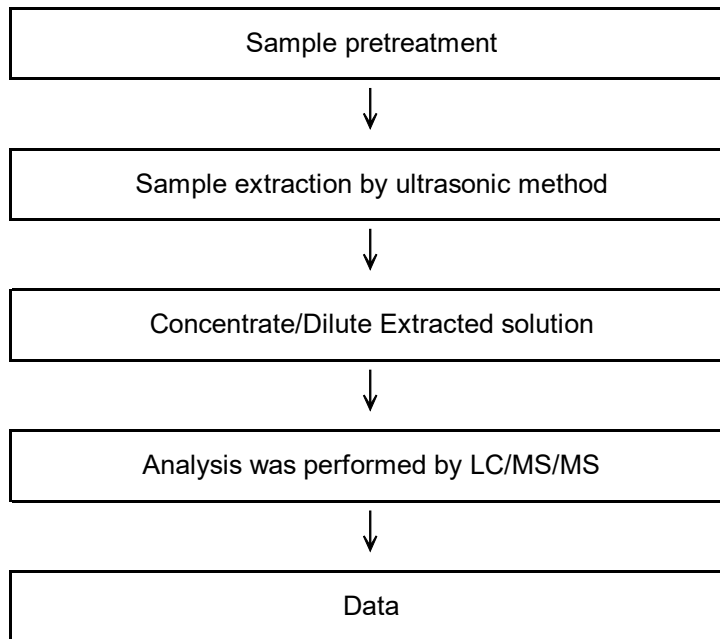
Date : 2020/09/16

Page: 9 of 12

SUMITOMO BAKELITE (TAIWAN) CO., LTD.

NO. 1, HWA SYI RD., TA FA INDUSTRIAL DISTRICT, TA LIAO, KAOHSIUNG, TAIWAN

Analytical flow chart of PFOA/PFOS

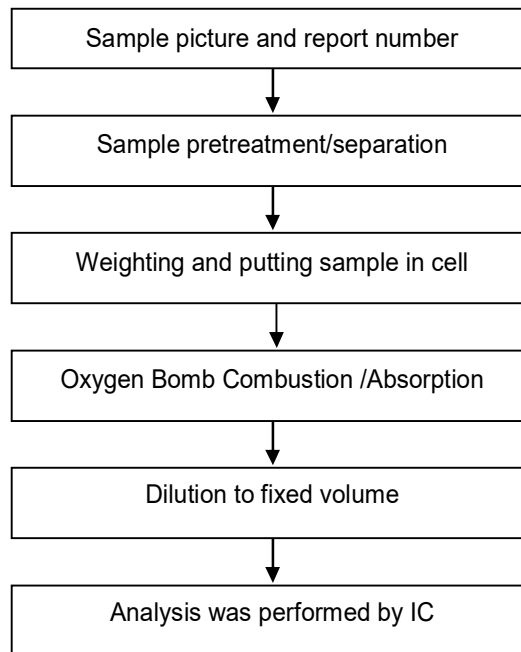


This document is issued by the Company subject to its General Conditions of Service printed overleaf, available on request or accessible at <https://www.sgs.com.tw/terms-of-service> and, for electronic format documents, subject to Terms and Conditions for Electronic Documents at <https://www.sgs.com.tw/terms-of-service>. Attention is drawn to the limitation of liability, indemnification and jurisdiction issues defined therein. Any holder of this document is advised that information contained hereon reflects the Company's findings at the time of its intervention only and within the limits of client's instruction, if any. The Company's sole responsibility is to its Client and this document does not exonerate parties to a transaction from exercising all their rights and obligations under the transaction documents. This document cannot be reproduced, except in full, without prior written approval of the Company. Any unauthorized alteration, forgery or falsification of the content or appearance of this document is unlawful and offenders may be prosecuted to the fullest extent of the law. Unless otherwise stated the results shown in this test report refer only to the sample(s) tested.

SUMITOMO BAKELITE (TAIWAN) CO., LTD.

NO. 1, HWA SYI RD., TA FA INDUSTRIAL DISTRICT, TA LIAO, KAOHSIUNG, TAIWAN

Analytical flow chart of Halogen



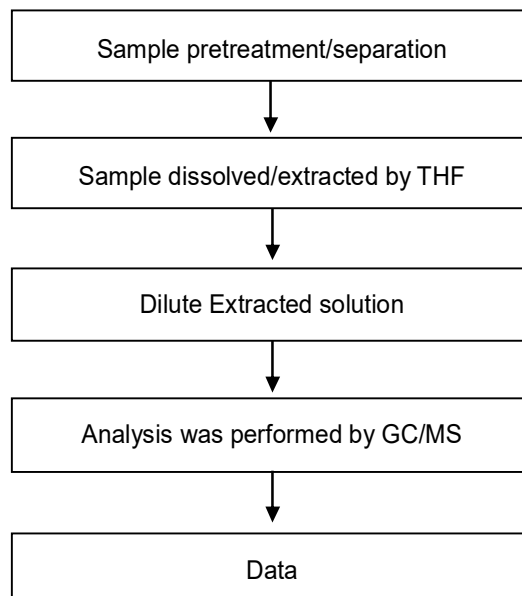
This document is issued by the Company subject to its General Conditions of Service printed overleaf, available on request or accessible at <https://www.sgs.com.tw/terms-of-service> and, for electronic format documents, subject to Terms and Conditions for Electronic Documents at <https://www.sgs.com.tw/terms-of-service>. Attention is drawn to the limitation of liability, indemnification and jurisdiction issues defined therein. Any holder of this document is advised that information contained hereon reflects the Company's findings at the time of its intervention only and within the limits of client's instruction, if any. The Company's sole responsibility is to its Client and this document does not exonerate parties to a transaction from exercising all their rights and obligations under the transaction documents. This document cannot be reproduced, except in full, without prior written approval of the Company. Any unauthorized alteration, forgery or falsification of the content or appearance of this document is unlawful and offenders may be prosecuted to the fullest extent of the law. Unless otherwise stated the results shown in this test report refer only to the sample(s) tested.

SUMITOMO BAKELITE (TAIWAN) CO., LTD.

NO. 1, HWA SYI RD., TA FA INDUSTRIAL DISTRICT, TA LIAO, KAOHSIUNG, TAIWAN

Analytical flow chart of phthalate content

【Test method: IEC 62321-8】



This document is issued by the Company subject to its General Conditions of Service printed overleaf, available on request or accessible at <https://www.sgs.com.tw/terms-of-service> and, for electronic format documents, subject to Terms and Conditions for Electronic Documents at <https://www.sgs.com.tw/terms-of-service>. Attention is drawn to the limitation of liability, indemnification and jurisdiction issues defined therein. Any holder of this document is advised that information contained hereon reflects the Company's findings at the time of its intervention only and within the limits of client's instruction, if any. The Company's sole responsibility is to its Client and this document does not exonerate parties to a transaction from exercising all their rights and obligations under the transaction documents. This document cannot be reproduced, except in full, without prior written approval of the Company. Any unauthorized alteration, forgery or falsification of the content or appearance of this document is unlawful and offenders may be prosecuted to the fullest extent of the law. Unless otherwise stated the results shown in this test report refer only to the sample(s) tested.

Test Report

No. : KA/2020/90831

Date : 2020/09/16

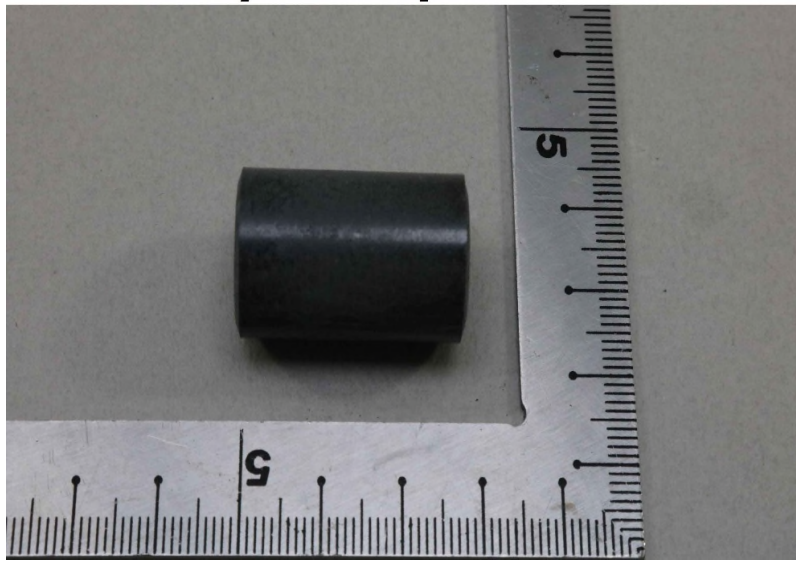
Page: 12 of 12

SUMITOMO BAKELITE (TAIWAN) CO., LTD.

NO. 1, HWA SYI RD., TA FA INDUSTRIAL DISTRICT, TA LIAO, KAOHSIUNG, TAIWAN

* The tested sample / part is marked by an arrow if it's shown on the photo. *

KA/2020/90831



** End of Report **