

# RZ/G2L Group Board Support Package Version 1.3

R01US0471EJ0105  
Rev. 1.05  
Nov 19, 2021

## Release Note update1

### Introduction

This release note describes the contents, building procedures and important points of the RZ/G2L Group Board Support Package (hereinafter referred to as “BSP”).

This release note is the update version of “RZ/G2L Group Board Support Package Version 1.3 Release Note (Document Number: R01US0471EJ0104)”. Please confirm Appendix in the page 13 to check the update points.

### Contents

1. Release Items .....	2
2. Build environment.....	4
3. Building Instructions of a BSP .....	6
3.1 Building images to run on the board .....	6
3.2 Building SDK .....	9
4. Components .....	10
5. Restrictions .....	11
6. Notes .....	12
7. Appendix.....	13

## 1. Release Items

- **Name and version**

RZ/G2L Group Board Support Package

Version 1.3 update1 (hereinafter referred to as “BSP v1.3-update1”)

- **Distribution method**

Please visit the site below and create an account to download the packages. Basic packages of BSP v1.3-update1 which are listed in **Table 1** can be downloaded.

RZ/G2L product page:

<https://www.renesas.com/RZG2L>

RZ/G2LC product page:

<https://www.renesas.com/RZG2LC>

RZ/G2L Group Board Support Package:

<https://www.renesas.com/products/microcontrollers-microprocessors/rz-arm-based-high-end-32-64-bit-mpus/rzg2l-board-support-package-419-cip>

- **Target board**

RZ/G2L Evaluation Board Kit PMIC version (\*1):

- RZG2L SMARC Module Board v2.1
- RZ SMARC Series Carrier Board v4.0

RZ/G2LC Evaluation Board Kit (\*2):

- RZG2LC SMARC Module Board v1.0
- RZ SMARC Series Carrier Board v4.0

(\*1) “RZ/G2L Evaluation Board Kit” and “RZG2L Evaluation Board Kit PMIC version” includes the RZG2L SMARC Module Board and the RZ SMARC Series Carrier Board.

(\*2) “RZG2LC Evaluation Board Kit” includes the RZ/G2LC SMARC Module Board and the RZ SMARC Series Carrier Board. This board is supported in this release, but it is preliminary and provided AS IS with no warranty. In next release, this board is going to be supported officially and verified.

- **Functions**

Linux BSP

- Linux Kernel
- Device Drivers

- **File contents**

BSP v1.3-update1 is delivered by the files listed in **Table 1**.

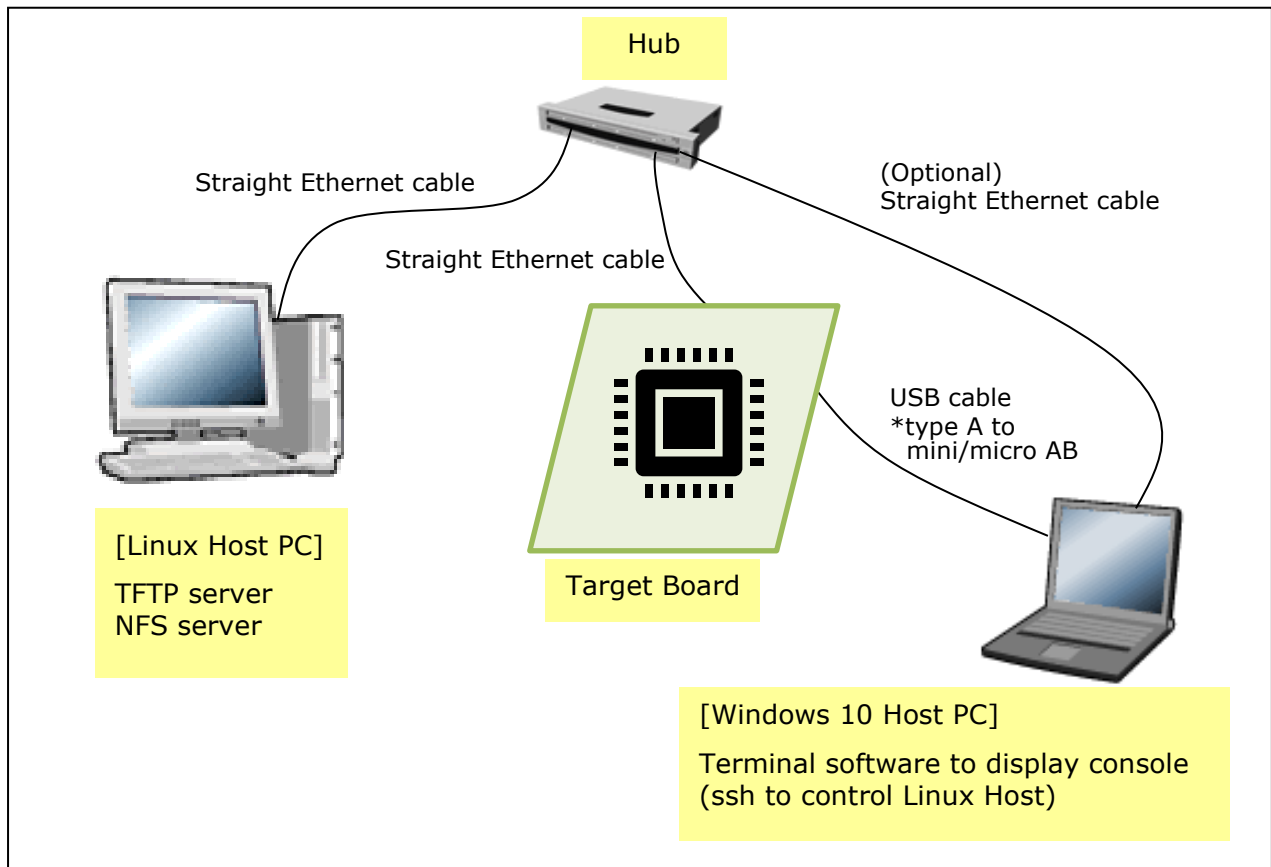
**Table 1. RZ/G2L Board Support Package**  
Basic packages

File	Description
RTK0EF0045Z0019AZJ-v1.3update1.zip	RZ/G2L Group Board Support Package. This file includes the <a href="#">Yocto recipe packages</a> and the necessary documents.
rzg2l_bsp_v1.3.tar.gz	<a href="#">Yocto recipe packages</a>
r01us0471ej0105-rz-g.pdf	This document
r01us0472ej0103-rz-g.pdf	Component list
r01tu0338ej0102-rz-g.pdf	Documents describing booting method and the required settings of bootloader
RTK0EF0045Z13001ZJ-v0.8_JP.zip RTK0EF0045Z13001ZJ-v0.8_EN.zip	RZ/G2L Mali Graphic Library Evaluation Version V0.8. This is the graphic package which corresponds to BSP v1.3-update1.
RTK0EF0045Z15001ZJ-v0.51_JP.zip RTK0EF0045Z15001ZJ-v0.51_EN.zip	RZ/G2L Codec Library Evaluation Version V0.51. This is the codec package which corresponds to BSP v1.3-update1.
v1.3-to-v1.3update1.patch.tar.gz	Update package. Please confirm <b>7. Appendix</b> for details.

BSP is provided “AS IS” with no warranty and the license which is described in the source code. Please check the contents of the license, then consider the applicability to the product carefully.

## 2. Build environment

**Figure. 1** shows the recommended environment of BSP. This environment uses the equipment and the software listed in **Table 2**. Please refer to “RZ/G2L and RZ/G2LC SMARC EVK Start-up Guide” for details about setting up the environment.



**Figure. 1 Recommended Environment**

**Table 2. Equipment and Software Necessary for Developing Environments of RZ/G2L Linux Platform**

Equipment	Description
Linux Host PC	Used as build/debug environment
OS	<b>Ubuntu 20.04 LTS (recommended)</b> 64 bit OS must be used.
NFS server	(Optional) Used for mounting rootfs via NFS
Windows Host PC	Used as debug environment, controlling with terminal software
OS	Windows 10
Terminal software	Used for controlling serial console of the target board Tera Term (latest version) is recommended Available at <a href="https://tssh2.osdn.jp/index.html.en">https://tssh2.osdn.jp/index.html.en</a>
VCP Driver	Virtual COM Port driver which enables to communicate Windows Host PC and the target board via USB which is virtually used as serial port. Available at: ● <a href="http://www.ftdichip.com/Drivers/VCP.htm">http://www.ftdichip.com/Drivers/VCP.htm</a>

### 3. Building Instructions of a BSP

#### 3.1 Building images to run on the board

This section describes the instructions to build the BSP. Before starting the build, run the command below on the Linux Host PC to install packages used for building the BSP.

```
$ sudo apt-get update
$ sudo apt-get install gawk wget git-core diffstat unzip texinfo gcc-multilib \
build-essential chrpath socat cpio python3 python3-pip python3-pexpect xz-utils \
debianutils iputils-ping python3-git python3-jinja2 libegl1-mesa libsdl1.2-dev \
pylint3 xterm
```

Please refer to the URL below for detailed information:

- <https://docs.yoctoproject.org/3.1.5/brief-yoctoprojectqs/brief-yoctoprojectqs.html>

Run the commands below and set the user name and email address before starting the build procedure. **⚠ Without this setting, an error occurs when building procedure runs git command to apply patches.**

```
$ git config --global user.email "you@example.com"
$ git config --global user.name "Your Name"
```

#### (1) Create a working directory (rzg2l\_bsp\_v1.3) at your home directory, and decompress Yocto recipe package

Run the commands below. Copy the compressed Yocto recipe package file (rzg2l\_bsp\_v1.3.tar.gz) into your home directory prior to this step.

```
$ mkdir ~/rzg2l_bsp_v1.3
$ cd ~/rzg2l_bsp_v1.3
$ tar zxvf ~/rzg2l_bsp_v1.3.tar.gz
```

**⚠ Note)** When you use the early version of the RZ/G2L LSI, please refer to the Section 6 Notes - (1) and apply the patches before the step (5) in the section 3.1. Please also confirm how to check which version you use.

#### (2) Enable GPU and Video Codec

The BSP can build the 2 types of the images: core-image-weston and core-image-minimal.

If you enable the GPU on RZ/G2L and RZ/G2LC with **core-image-weston**, please copy the Graphic package (RTK0EF0045Z13001ZJ-v0.8\_EN.zip or RTK0EF0045Z13001ZJ-v0.8\_JP.zip) to working directory and run the commands below. If you build core-image-minimal, please ignore this step.

```
$ cd ~/rzg2l_bsp_v1.3
$ unzip RTK0EF0045Z13001ZJ-v0.8_EN.zip
$ tar zxvf RTK0EF0045Z13001ZJ-v0.8_EN/meta-rz-features.tar.gz
```

If you enable the video codec on RZ/G2L with **core-image-weston** or **core-image-minimal**, please copy the video codec package (RTK0EF0045Z15001ZJ-v0.51\_EN.zip or RTK0EF0045Z15001ZJ-v0.51\_JP.zip) to working directory and run the commands below.

```
$ cd ~/rzg2l_bsp_v1.3
$ unzip RTK0EF0045Z15001ZJ-v0.51_EN.zip
$ tar zxvf RTK0EF0045Z15001ZJ-v0.51_EN/meta-rz-features.tar.gz
```

Note) When you enable both of GPU and video codec, please run all commands above.

⚠ Note) The Graphic package and the video codec package are under development. These are released ASIS with no warranty

### (3) Setup a build environment

Run the commands below. The environment to build is set by the source command.

```
$ cd ~/rzg2l_bsp_v1.3
$ source poky/oe-init-build-env
```

### (4) Prepare the default configuration files for the target board

Run the commands below. Please replace “*board*” by the name below:

RZ/G2L Evaluation Board Kit:	smarc-rzg2l
RZ/G2L Evaluation Board Kit PMIC version:	smarc-rzg2l
RZ/G2LC Evaluation Board Kit:	smarc-rzg2lc

```
$ cd ~/rzg2l_bsp_v1.3/build
$ cp ../meta-rzg2/docs/template/conf/board/*.conf ./conf/
```

Note) By default, GPLv3 packages are not permitted to be included in the BSP build. If you want to use GPLv3 packages in your system, please refer to the Section 6 Notes - (2).

### (5) Start a build

Run the commands below to start a build. Please connect the Linux Host PC to the network when building. Building an image can take up to a few hours depending on the user’s host system performance.

The BSP can build the 2 types of images like below. Please refer to the “Component list” for details about components of each images.

```
$ bitbake core-image-minimal
```

Or

```
$ bitbake core-image-weston
```

After the build is successfully completed, a similar output will be seen, and the command prompt will return.

```
NOTE: Tasks Summary: Attempted 7427 tasks of which 16 didn't need to be rerun and all succeeded.
```

All necessary files listed in **Table 3** will be generated by the bitbake command and will be located in the **build/tmp/deploy/images** directory.

Table 3. Image files

<b>RZ/G2L</b>	<b>Linux kernel</b>	Image-smarc-rzg2l.bin
	<b>Device tree file</b>	r9a07g044l2-smarc.dtb
	<b>root filesystem</b>	<image name>-smarc-rzg2l.tar.bz2
	<b>Boot loader</b>	<ul style="list-style-type: none"> <li>• bl2_bp-smarc-rzg2l.srec</li> <li>• fip-smarc-rzg2l.srec</li> </ul>
	<b>Flash Writer</b>	Flash_Writer_SCIF_RZG2L_SMARC_DDR4_2GB.mot
<b>RZ/G2L PMIC ver</b>	<b>Linux kernel</b>	Image-smarc-rzg2l.bin
	<b>Device tree file</b>	r9a07g044l2-smarc.dtb
	<b>root filesystem</b>	<image name>-smarc-rzg2l.tar.bz2
	<b>Boot loader</b>	<ul style="list-style-type: none"> <li>• bl2_bp-smarc-rzg2l_pmic.srec</li> <li>• fip-smarc-rzg2l_pmic.srec</li> </ul>
	<b>Flash Writer</b>	Flash_Writer_SCIF_RZG2L_SMARC_PMIC_DDR4_2GB_1PCS.mot
<b>RZ/G2LC</b>	<b>Linux kernel</b>	Image-smarc-rzg2lc.bin
	<b>Device tree file</b>	r9a07g044c2-smarc.dtb
	<b>root filesystem</b>	<image name>-smarc-rzg2lc.tar.bz2
	<b>Boot loader</b>	<ul style="list-style-type: none"> <li>• bl2_bp-smarc-rzg2lc.srec</li> <li>• fip-smarc-rzg2lc.srec</li> </ul>
	<b>Flash Writer</b>	• Flash_Writer_SCIF_RZG2LC_SMARC_DDR4_1GB_1PCS.mot

<image name> will be the name used in the step (5).

For the booting method and the required settings, please refer to the “RZ/G2L and RZ/G2LC SMARC EVK Start-up Guide”.



## 3.2 Building SDK

To build Software Development Kit (SDK), run the commands below after the steps (1) – (5) of the section 3.1 are finished.

The SDK allows you to build custom applications outside of the Yocto environment, even on a completely different PC. The results of the commands below are ‘installer’ that you will use to install the SDK on the same PC, or a completely different PC.

For building general applications:

```
$ cd ~/rzg2l_bsp_v1.3/build
$ bitbake core-image-weston -c populate_sdk
```

The resulting SDK installer will be located in **build/tmp/deploy/sdk/**

The SDK installer will have the extension .sh

To run the installer, you would execute the following command:

```
$ sudo sh poky-glibc-x86_64-core-image-weston-aarch64-smarc-rzg2l-toolchain-\
3.1.5.sh
```

## 4. Components

The components which are commonly used in this release are listed in Table 4. Please also refer to the “Component list” for details.

**Table 4. Versions of commonly used components**

<b>Components</b>	<b>BSP v1.1</b>	<b>BSP v1.3</b>	<b>BSP v1.3-update1</b>
Linux kernel	4.19.140-cip33	4.19.140-cip41	4.19.140-cip41
GCC	8.3.0 (Arm GCC 8.3-2019.03)	8.3.0 (Arm GCC 8.3-2019.03)	8.3.0 (Arm GCC 8.3-2019.03)
glibc	2.28	2.28	2.28
busybox	1.31.1	1.31.1	1.31.1
openssl	1.1.1d	1.1.1d	1.1.1d

## 5. Restrictions

### (1) Driver

In this release, the below drivers can be used but are not fully tested.

- CPG
- GPIO
- MIPI DSI
- Interrupt Controller
- Direct Memory Access Controller
- MTU3a
- GTM
- WDT
- SPI
- SPI Multi I/O Bus Controller
- I<sup>2</sup>C
- A/D Converter
- USB
- LCDC

### (2) RZ/G2LC Evaluation Board Kit

RZ/G2LC Evaluation Board Kit is supported in this release, but it is preliminary and provided AS IS with no warranty.

## 6. Notes

### (1) Early version of RZ/G2L Evaluation Board Kit

When you use the **early** version of the RZ/G2L LSI, please run the commands below to apply the patches before the step (5) in the section 3.1.

```
$ cd ~/rzg2l_bsp_v1.3/meta-rzg2
$ patch -p1 < ../extra/0001-trusted-firmware-a-add-rd-wr-64-bit-reg-workaround\
.patch
$ patch -p1 < ../extra/0002-linux-renesas-add-workaround-patch-for-gicv3.patch
```

Note) If you want to know which version of the RZ/G2L LSI you use, please check the LSI on the board. When “2050KC002” is printed on the LSI, you use the early version.

### (2) GPLv3 packages

In this release, the GPLv3 packages are disabled as default in *build/conf/local.conf* file:

```
INCOMPATIBLE_LICENSE = "GPLv3 GPLv3+"
```

If you want to use GPLv3, just hide this line:

```
#INCOMPATIBLE_LICENSE = "GPLv3 GPLv3+"
```

### (3) Disable libraries of GPU and video codec

When you want to disable the functions of the GPU and the video codec, please add lines in *build/conf/local.conf* file:

- Disable OpenGL ES library in the graphics package (\*1)

```
USE_RENESAS_GLES = "0"
```

- Disable OpenCL library in the graphics package (\*1)

```
USE_RENESAS_OPENCL = "0"
```

- Disable OpenMAX library for decode in the video codec package (\*2)

```
USE_CODEC_DEC = "0"
```

- Disable OpenMAX library for encode in the video codec package (\*2)

```
USE_CODEC_ENC = "0"
```

(\*1) This library is included in RTK0EF0045Z13001ZJ-v0.8\_EN.zip and RTK0EF0045Z13001ZJ-v0.8\_JP.zip

(\*2) This library is included in RTK0EF0045Z15001ZJ-v0.51\_EN.zip and RTK0EF0045Z15001ZJ-v0.51\_JP.zip

## 7. Appendix

- **Update patch for BSP v1.3**

Renesas released BSP v1.3 in the end of September 2021. After that, patches were released to update BSP v1.3. Please use the patches if you want to update the BSP v1.3.

### Update points of BSPv1.3-update1

- Support RZ/G2LC SMARC EVK board.
- Update/fix issues in ISU driver (VSPM module).
- Add position and scale setting for waylandsink
- Add some basic multimedia package in minimal image's rootfs
- Remove LGPLv3 package in QT5 when building QT.

**Copy the update package file (v1.3-to-v1.3update1.patch.tar.gz) obtained from Renesas into your home directory prior to the steps below.**

- **How to use the update package file**

Please run the commands below to create the patches. Then the patches are created in the `rzg2l_bsp_v1.3/extra/v1.3update1_patches/` directory.

```
$ cd ~/rzg2l_bsp_v1.3
$ tar zxvf ../v1.3-to-v1.3update1.patch.tar.gz
$ patch -p1 < ../v1.3-to-v1.3update1.patch
```

After that, select and apply the patches.

- **How to apply the patche**

Please run the commands below to apply the patch **before the step (5) in the section 3.1.**

```
$ cd ~/rzg2l_bsp_v1.3/meta-rzg2
$ for i in ../extra/v1.3update1_patches/*.patch; do patch -p1 < $i; done
```

After that, run the step (5) in the section 3.1.

## Website and Support

Renesas Electronics Website

<http://www.renesas.com/>

Inquiries

<http://www.renesas.com/contact/>

All trademarks and registered trademarks are the property of their respective owners.