



**Integrated Device Technology**

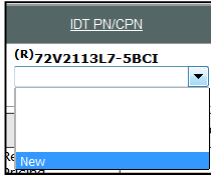
---

The Analog and Digital Company™

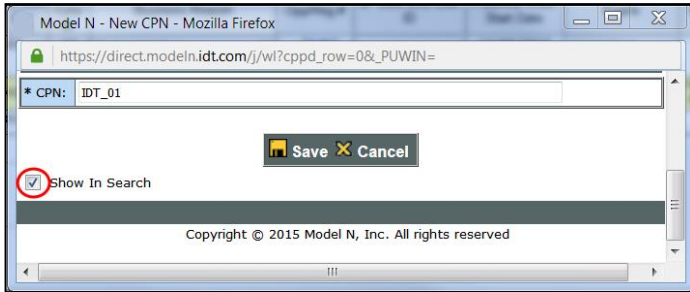
## **Quote related FAQ**

**Q: How to create a new CPN**

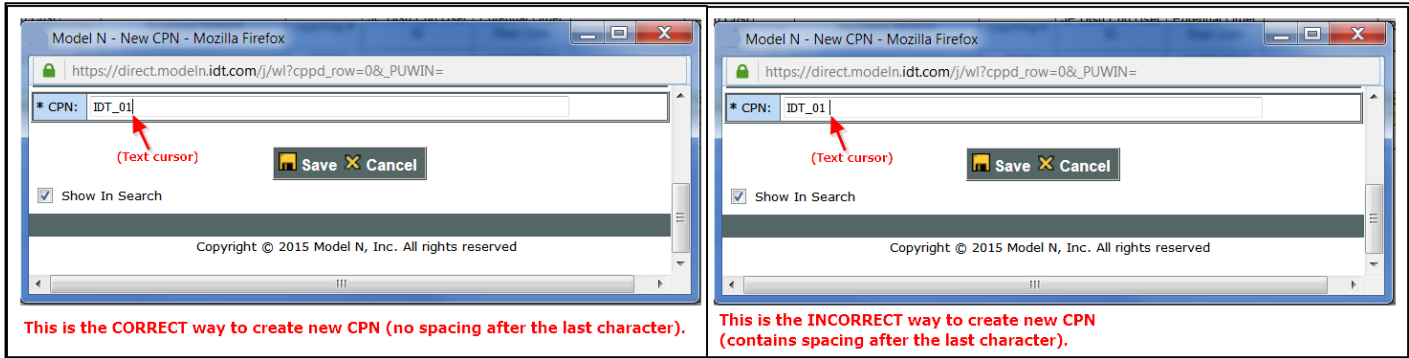
Select "New" in the drop-down menu in "IDT PN/CPN" field.



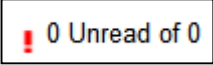
In the New CPN window, enter the CPN in "CPN" field, check the "Show In Search" check box and click the "Save" button.



Special note: please ensure that the CPN contains "no spacing" after the last character of the CPN.

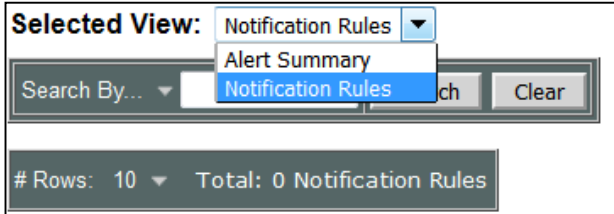


**Q: How to set Alert in ModelN**

In IDT Home page, click on the  on the top right of the page.



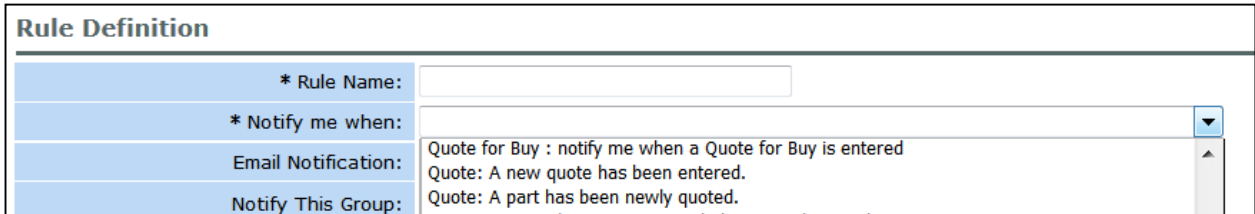
In “Selected View” drop-down menu, select “Notification Rules”.



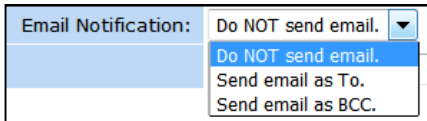
Click the “New” button.



Enter a Rule Name in the “Rule Name” field, and select the relevant criteria from the “Notify me when” drop-down.



You can also choose if an email notification is required under the “Email Notification” drop-down.



Click the “Save” button to complete the alert setting.

