



Integrated Device Technology, Inc.

6024 Silver Creek Valley Road

San Jose, CA 95138 USA

Manufacturing Bulletin

Date: 8th May, 2012

Subject: Tube Shipment Inner Packing improvement

Integrated Device Technology, Inc. would like to notify our customers that IDT is improving the tube shipment inner packing material to provide additional protection during shipment.

The changes in packing material will not have any impact on the product quality, MSL level, barcode layout and contents.

Please refer to the attachment I for details. Customer can expect shipments from IDT Penang, Malaysia facility from 28th May 2012 onwards.

If you need any additional information, please contact your local sales representative.

Yours sincerely,

LS Koay

A handwritten signature in black ink, appearing to read 'LS Koay', is written over the printed name.

Manager, Product Assurance

Integrated Device Technology (Malaysia) Sdn Bhd.

lskoay@idt.com

Tel. # (604) 613-2283 (Malaysia)



Integrated Device Technology, Inc.

6024 Silver Creek Valley Road
San Jose, CA 95138 USA

Manufacturing Bulletin

Evaluation Data :

To compare the potential of tube bent for shipment pack with Pink foam Vs Bubble bag packing under hot condition/environment using IDT tube for Non dry packing and also Dry packing condition.

Baking condition: Temperature= 55c

(PVC material heat distortion temperature ~54 deg c) ,

Duration= 3 hours and 8 hours

Results :



Current:



Proposed:

Packed with Pink Foam:

3 hours = Tube bent (156mils)

8 hours = Tube bent (330mils)

Packed with Bubble Bag:

3 hours = Tube bent (15mils)

8 hours = Tube bent (36mils)

Note: Tube warpage limit control per spec is 50mils



Integrated Device Technology, Inc.

6024 Silver Creek Valley Road
San Jose, CA 95138 USA

Manufacturing Bulletin

Attachment I

Subject: Tube Shipment Inner Packing improvement

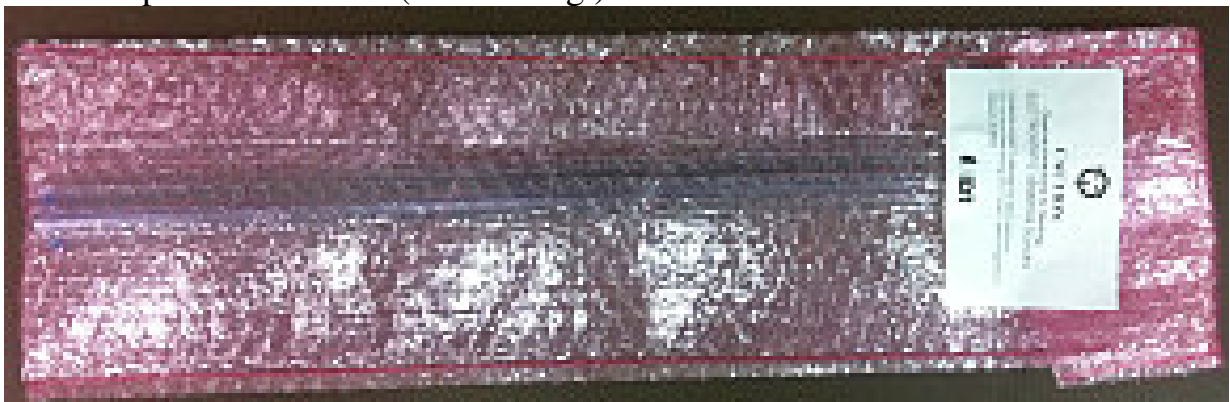
Date: 3th May, 2012

(1.) Inner Packing Material

Current Material Used (pink foam)



Improved Material (bubble bag)



Notes:

The changes at inner packing material will not have any impact on the product quality, MSL level, barcode layout and contents.