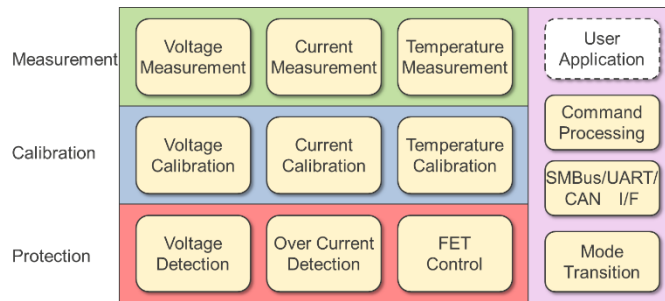


# RAJ240080 Starter Kit

## Easy-to-use RAJ240080 evaluation platform

Includes BASIC sample source code with the following functions enabling user customization:

- Current, voltage and temperature measurement.
- Calculate remaining capacity and relative state-of-charge.
- Capacity correction by cell voltage
- Battery status monitor.
- Operating mode transition.
- Initial calibration.
- SMBus communication.



### Typical battery applications

Power tool, Gardening tool, Cleaner, Drone, UPS

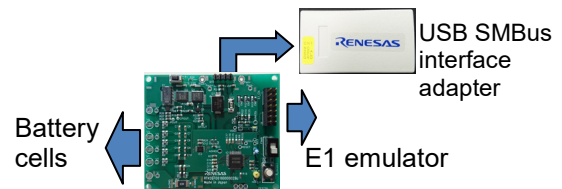
### Development environment

RAJ240080 Starter kit helps users to start their Li-ion multi-cell battery system development.

#### Components

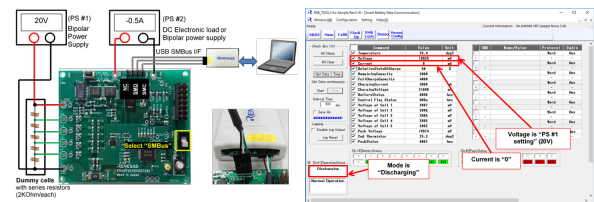
##### Evaluation module (EVM)

- 3-5 cells Li-ion battery pack supported.
- 4 layers PCB board design.
- High Current design: maximum current 30A.
- SCP protection (2nd protection control)
- Interface: SMBus, E1 emulator.
- Board dimension: 60mm x 60mm



##### Documents

- Starter kit user's manual.
- Step by step quick start guide.
- Board instruction manual.
- Sample program specification
- Specification of windows application(RSB\_TOOL2) for sample code
- RAJ240080 datasheet.



##### Easy-to-use evaluation setup

- USB SMBus interface adapter
- GUI based application software (RSB\_TOOL2) Status monitor and data logging. Parameter configuration. Board level calibration SMBus command read/write. Supports windows7/8/10.

