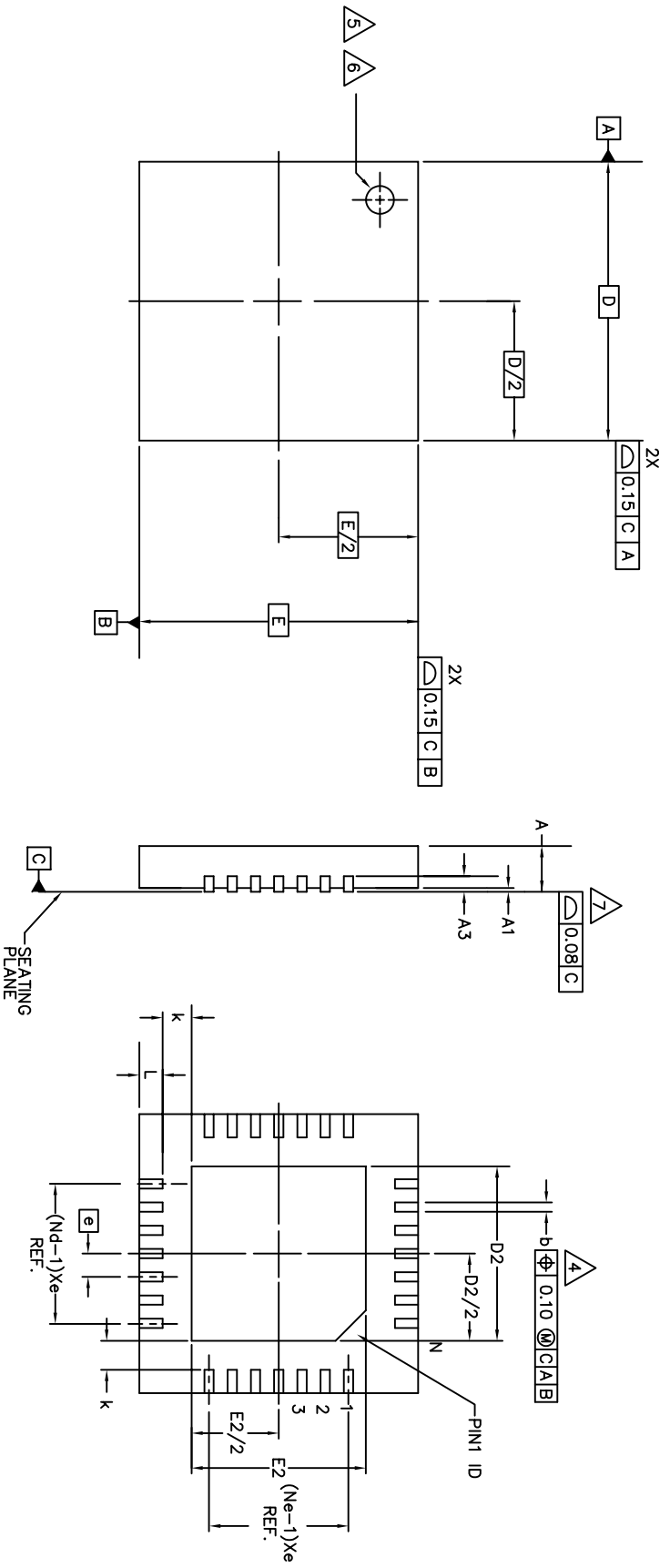


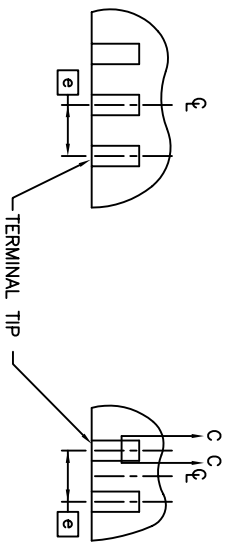
REVISIONS			
REV	DESCRIPTION	DATE	APPROVED
00	INITIAL RELEASE	11/7/12	RC



TOP VIEW

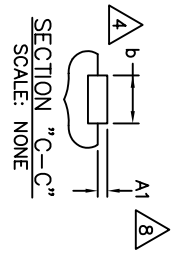
SIDE VIEW

BOTTOM VIEW



FOR ODD TERMINAL/SIDE

FOR EVEN TERMINAL/SIDE



TOLERANCES UNLESS SPECIFIED	
DECIMAL	±
ANGULAR	±
XXX±	
XXXX±	
XXXX±	
APPROVALS	DATE
DRAWN <i>DP/p</i>	05/28/02
CHECKED	
SIZE	DRAWING No.
C	PSC-4447
DO NOT SCALE DRAWING	SHEET 1 OF 2

IDT 2975 Slender Way
Santa Clara, CA 95054
PHONE: (408) 727-6116
FAX: (408) 492-8674

www.IDT.com

TITLE: NI/NIC28 PACKAGE OUTLINE
6.0 X 6.0 mm BODY
4.8 X 4.8 mm EPAD VFQFP-N


REVISIONS			
REV	DESCRIPTION	DATE	APPROVED
00	INITIAL RELEASE	11/7/12	RC

SYMBOL	JEDEC VARIATION VJUC-3			N _O T _E
	MIN.	NOM.	MAX.	
Ⓜ	0.65	BSC		2
N	28			2
ND	7			2
Ne	7			2
b	0.25	0.30	0.35	4
D2	4.8			10
E2	4.8			10

SYMBOL	COMMON DIMENSIONS			N _O T _E
	MIN.	NOM.	MAX.	
A	—	0.90	1.00	
AT	0.00	0.02	0.05	7
A3	0.20 REF.			
D	6.00 BSC			
E	6.00 BSC			
K	0.20	—	—	
L	0.35	0.40	0.45	

NOTES:

1. DIMENSIONING & TOLERANCING CONFORM TO ASME Y14.5M. – 1994.
2. N IS THE NUMBER OF TERMINALS.
ND IS THE NUMBER OF TERMINALS IN X-DIRECTION &
Ne IS THE NUMBER OF TERMINALS IN Y-DIRECTION.
3. ALL DIMENSIONS ARE IN MILLIMETERS.
4. DIMENSION b APPLIES TO PLATED TERMINAL AND IS MEASURED BETWEEN 0.20 AND 0.30mm FROM TERMINAL TIP.
5. THE PIN #1 IDENTIFIER MUST EXIST ON THE TOP SURFACE OF THE PACKAGE BY USING INDENTATION MARK OR OTHER FEATURE OF PACKAGE BODY.
6. EXACT SHAPE AND SIZE OF THIS FEATURE IS OPTIONAL.
7. APPLIED TO EXPOSED PAD AND TERMINALS. EXCLUDE EMBEDDED PART OF EXPOSED PAD FROM MEASURING.
8. APPLIED ONLY FOR TERMINALS.
9. THIS OUTLINES CONFORMS TO JEDEC PUBLICATION 95 REGISTRATION MO-220, VARIATION VJUC-3 & VJUD-5 WITH THE EXCEPTION OF D2 & E2.

TOLERANCES UNLESS SPECIFIED		 2975 Slender Way Santa Clara, CA 95054 PHONE: (408) 727-6116 FAX: (408) 492-8674
ANGULAR ±		
APPROVALS	DATE	TITLE
DRAWN <i>gyp/p</i>	06/28/02	NL/NL628 PACKAGE OUTLINE
CHECKED		6.0 X 6.0 mm BODY 4.8 x 4.8 mm EPAD VQFP-N
SIZE	DRAWING No.	REV
C	PSC-4447	00
DO NOT SCALE DRAWING		SHEET 2 OF 2