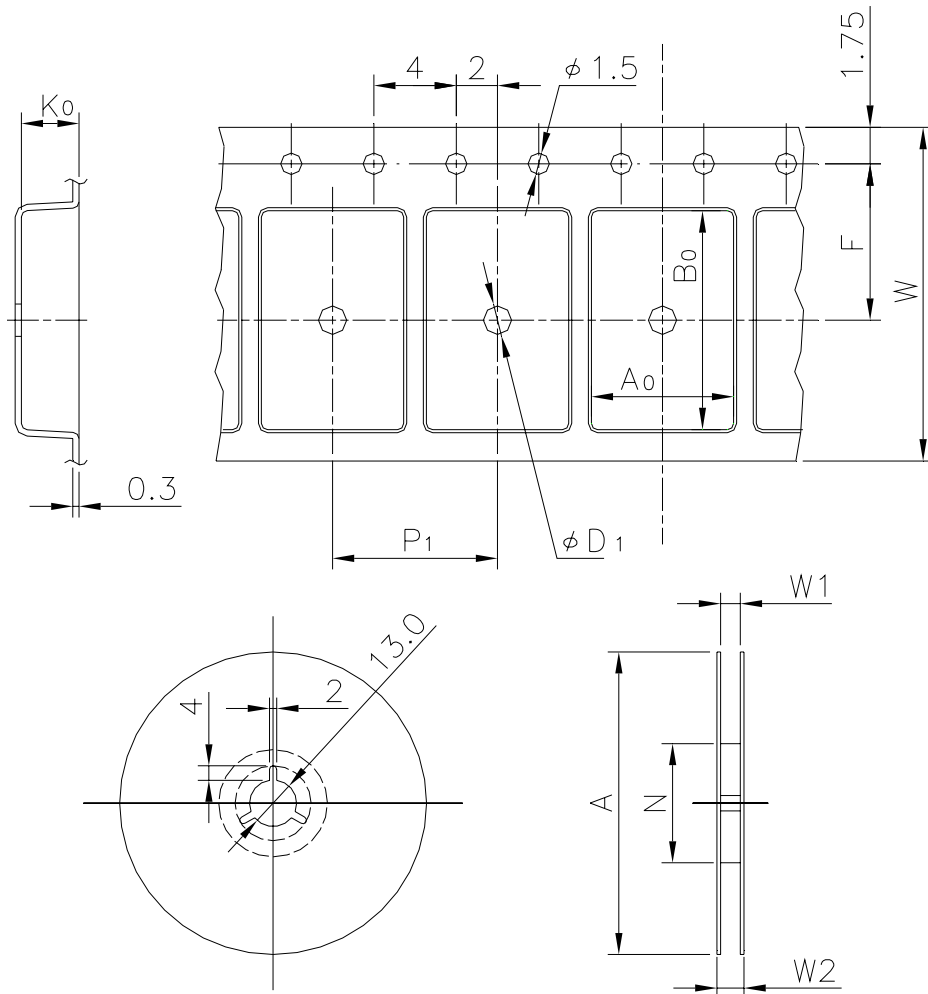


# EMBOSSED TAPE

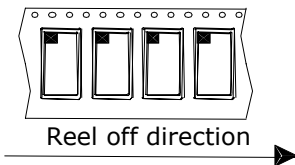
| Taping Code      | RENESAS Code | Previous Code |
|------------------|--------------|---------------|
| MTE2424H-64P6N-A | PRQP0064GA-A | 64P6N-A       |
|                  | PRQP0080JA-A | 80P6S-A       |



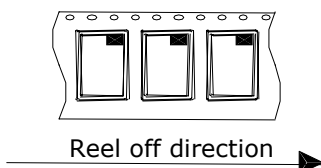
Unit:mm

## Standard Orientation of Package

The pin 1 is located in the hatching portion.



The pin 1 may also be located in the following portion for reverse bent packages and some QFPs.



|                             |       |   |
|-----------------------------|-------|---|
| Tape Dimensions<br>(mm)     | W     | 24  |
|                             | $P_1$ | 24  |
|                             | $A_0$ | 17.85   |
|                             | $B_0$ | 17.85   |
|                             | $K_0$ | 3.1   |
|                             | F     | 11.5  |
|                             | $D_1$ | 2   |
| Reel Dimensions<br>(mm)     | A     | 330   |
|                             | N     | 100   |
|                             | W1    | 25.4  |
|                             | W2    | 29.4  |
| Maximum storage No. IC/Reel |       | 500   |
| Material                    |       | Carbon PS                                     |
| Surface resistance          |       | Less than $1 \times 10^{11} \Omega / \square$ |
| Packing form                |       | Dry pack                                      |