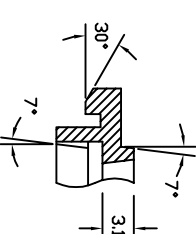
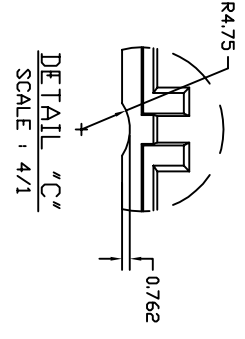


SECTION "X-X"
TRAY STACKING DETAIL
SCALE : 3/1

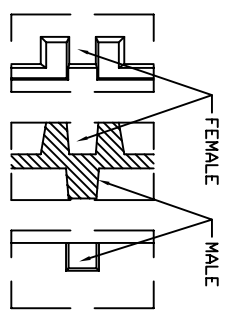
SECTION "Y-Y"



DETAIL "H"
SCALE : 4/1



DETAIL "C"
SCALE : 4/1



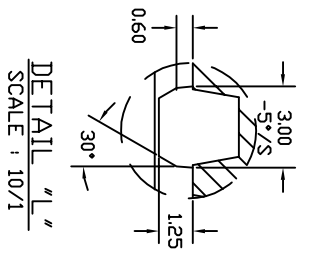
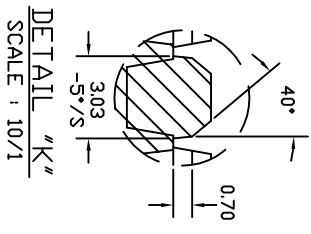
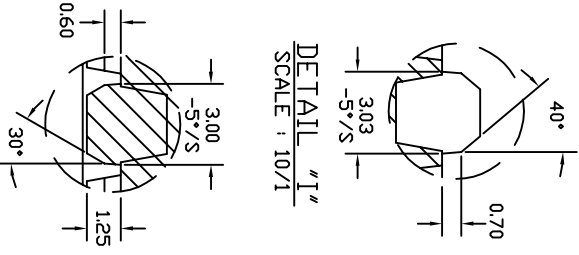
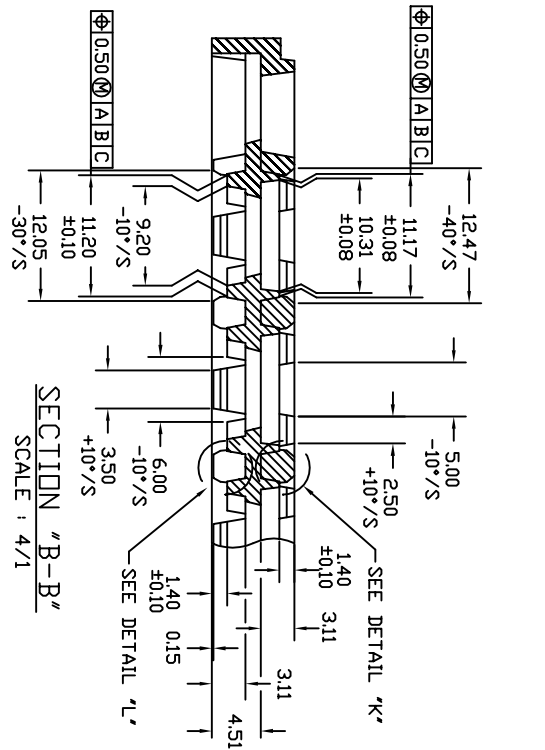
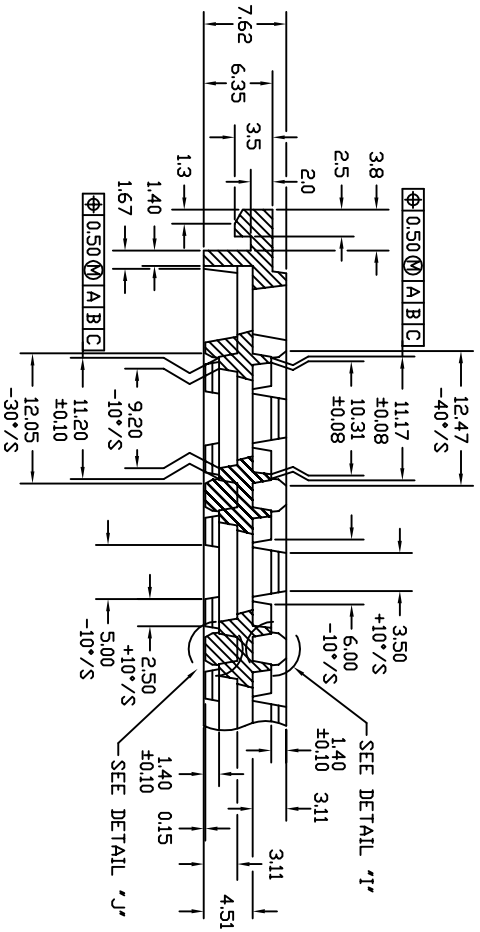
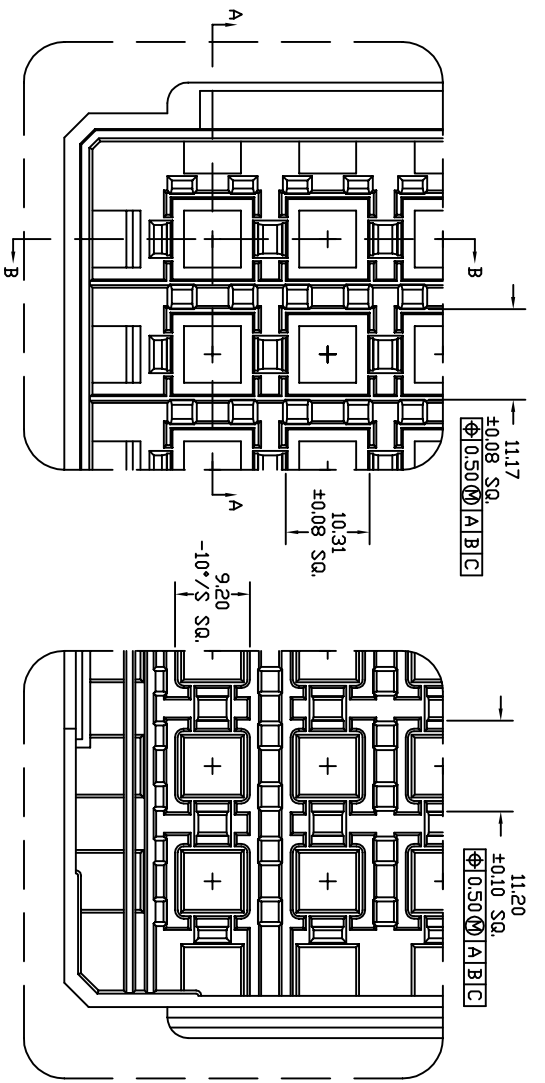
SLIP-LOCK DETAILS
DETAIL "D"
SCALE : 4/1

NOTES : (UNLESS OTHERWISE SPECIFIED)
1. NUMBER OF POCKET : 8 X 21 = 168 POCKETS

TOLERANCES UNLESS OTHERWISE SPECIFIED
DECIMAL :
.X ±.25
.XX ±.13
.XXX ±.13
ANGLE : 35°
ANGULAR : ±

IDT
www.IDT.com
6024 Silver Creek Valley Road,
San Jose, CA 95138
PHONE: (408) 284-8200
FAX: (408) 284-3572

TITLE: AC/ACG100 & BC/BCG100 SHIPPING TRAY		SCALE N/A	
STOCK NO. N/A	DRAWING NO. MSC-1702-A	REV 00	SCALE N/A
DO NOT SCALE DRAWING		SHEET 1 OF 2	



TOLERANCES UNLESS OTHERWISE SPECIFIED
 DECIMAL : X ±.25
 .XX ±.13
 .XXX ±.13
 ANGLE : ±5°
 ANGULAR : ±



6024 Silver Creek Valley Road,
 San Jose, CA 95138
 PHONE: (408) 284-8200
 FAX: (408) 284-3572

TITLE: AC/ACG100 & BC/BCG100 SHIPPING TRAY		SCALE N/A	
STOCK NO. N/A	DRAWING NO. MSC-1702-A	REV N/A	00
DO NOT SCALE DRAWING		SHEET 2 OF 2	