

## Contents

1	Content and Basics .....	3
2	USB Driver Installation for a WIN7 Operating Systems .....	4
2.1.	Installing the Basic USB Driver .....	4
2.2.	Installing the Virtual Com Port USB Driver .....	9
2.3.	Checking USB Port Operation .....	11
3	USB Driver Installation for a WIN XP Operating Systems .....	12
3.1.	Installing the Basic USB Driver .....	12
3.2.	Installing the Virtual Com Port USB Driver .....	14
3.3.	Checking USB Port Operation .....	14
4	Changing the Product ID of the SSC Communication Board V3.3 .....	15
4.1.	FT_Prog Tool for Changing the PID .....	15
4.2.	Procedure for Changing the PID .....	16
5	Related Documents .....	19
6	Glossary .....	19
7	Document Revision History .....	19

## List of Figures

Figure 1.1	Product ID for SSC Communication Board V3.3 using IDT's Default Product ID .....	3
Figure 2.1	Hardware and Software Used for USB Driver Installation .....	4
Figure 2.2	"New Hardware Found" Message .....	4
Figure 2.3	"Installation Failed" Message .....	5
Figure 2.4	Control Panel .....	5
Figure 2.5	"Hardware and Sound" Menu .....	5
Figure 2.6	Device Manager .....	6
Figure 2.7	"Update Driver Software" .....	6
Figure 2.8	Search for Driver .....	7
Figure 2.9	Browse for IDT's USB Driver .....	7
Figure 2.10	Windows® Security Message .....	8
Figure 2.11	Successful Hardware Installation .....	8
Figure 2.12	"Update Driver Software" .....	9
Figure 2.13	Search for the Driver .....	9
Figure 2.14	Windows Security Message .....	10
Figure 2.15	Successful Hardware Installation .....	10
Figure 2.16	Contents of the Device Manager after Successful Installation .....	11
Figure 3.1	Found New Hardware Wizard – Welcome Window .....	12
Figure 3.2	Select USB Driver .....	12
Figure 3.3	Search for USB Driver .....	13
Figure 3.4	Windows® XP – Logo Test .....	13
Figure 3.5	Successful Hardware Installation .....	13
Figure 3.6	Successful Hardware Installation .....	14
Figure 4.1	Location of FT_Prog_v1.10.zip on the SSC Evaluation Software DVD .....	15
Figure 4.2	Main Window of FT_PROG Revision 1.10 .....	16

Figure 4.3    Searching for the Connected SSC Communication Board ..... 17

Figure 4.4    SSC Communication Board with IDT Product ID Detected ..... 17

Figure 4.5    Changes Required for 64-Bit OS ..... 17

Figure 4.6    “Program Devices” Button..... 18

Figure 4.7    Start Programming Procedure ..... 18

Figure 4.8    Programming Finished ..... 18

# 1 Content and Basics

This application note provides a step-by-step example for USB driver installation for IDT's SSC Communication Board (CB) using the latest USB driver from the IDT website or SSC Evaluation Software DVD and a Win7 64-bit Operating System (OS) or WinXP OS. Instructions are also included for creating a virtual COM port on the user's USB port by installing the second part of the USBdriver. Both these drivers are needed when using the CB.

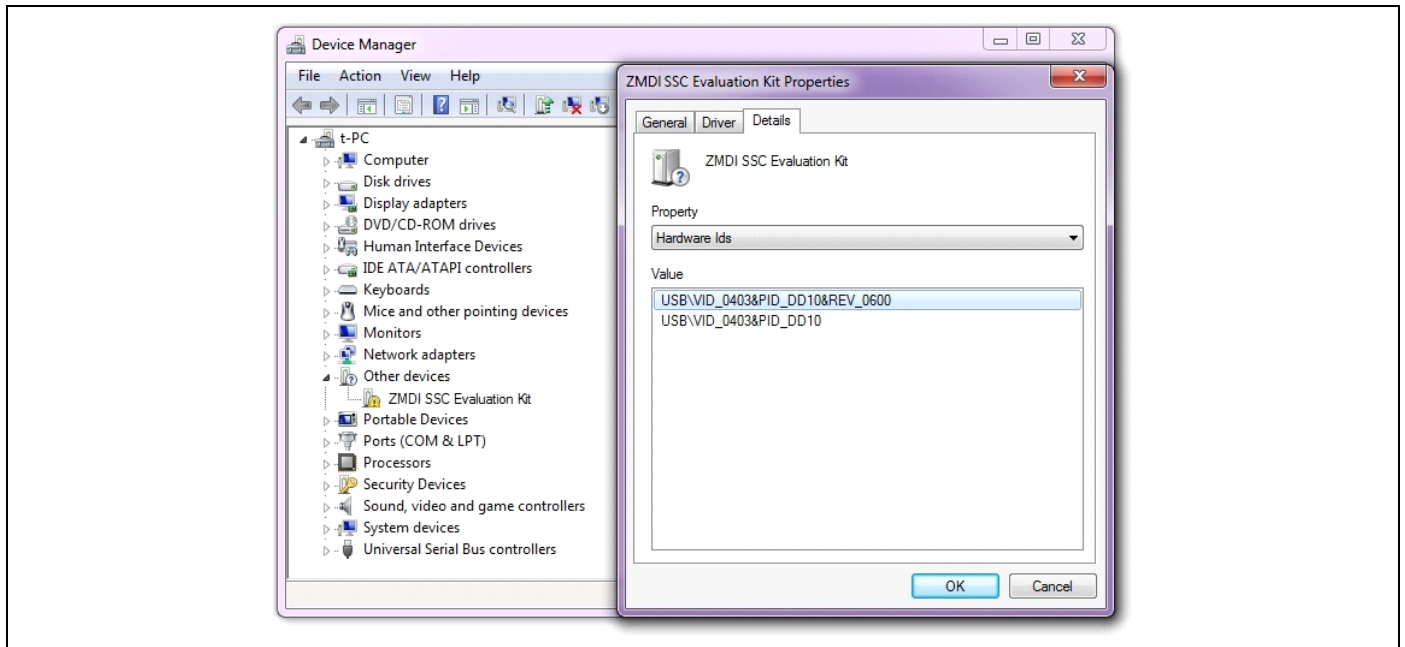
Since Microsoft Windows® Vista and Microsoft Windows® Server 2008, the kernel at the core of the OS has been improved by some substantial enhancements.<sup>1</sup> One of the improvements in the kernel is the option to install hardware in the OS. Therefore a certification process must be completed. Because the USB device identification of the SSC Communication Board is not certified by Microsoft®, a change of the Product ID (PID) can be used to suppress error messages during the installation process and use FTDI's certified driver. This is needed if the security requirements of the user's IT department do not allow using non-WHQL-certified drivers.

For USB communication, the CB uses an integrated circuit from FTDI. The second part of the procedure in this application note describes how to reprogram IDT's CB's PID 0xDD10 to FTDI's default PID 0x6001 in order to use the approved FTDI driver.<sup>2</sup>

To detect which kind of PID the CB uses, the Windows® Device Manager can be used. The following steps are recommended.<sup>3</sup>

- Open the Device Manager tool on the user's PC.
- Select the SSC CB. Note: The location for the CB ("ZMDI SSC Evaluation Kit") depends on successful installation of the driver (either "Other devices" or "Ports (COM & LPT)").
- Right-click on "ZMDI SSC Evaluation Kit" → select "Properties."
- Go to the "Details" tab and select "Hardware Ids" in the "Property" pull-down menu.

**Figure 1.1 Product ID for SSC Communication Board V3.3 using IDT's Default Product ID**



<sup>1</sup> Please refer to articles on the Microsoft™ website for further information (<http://www.microsoft.com/whdc/system/vista/kernel-en.mspx>).

<sup>2</sup> Note: The procedures for changing the PID require Microsoft .NET Framework 2.0 (see section 4.1).

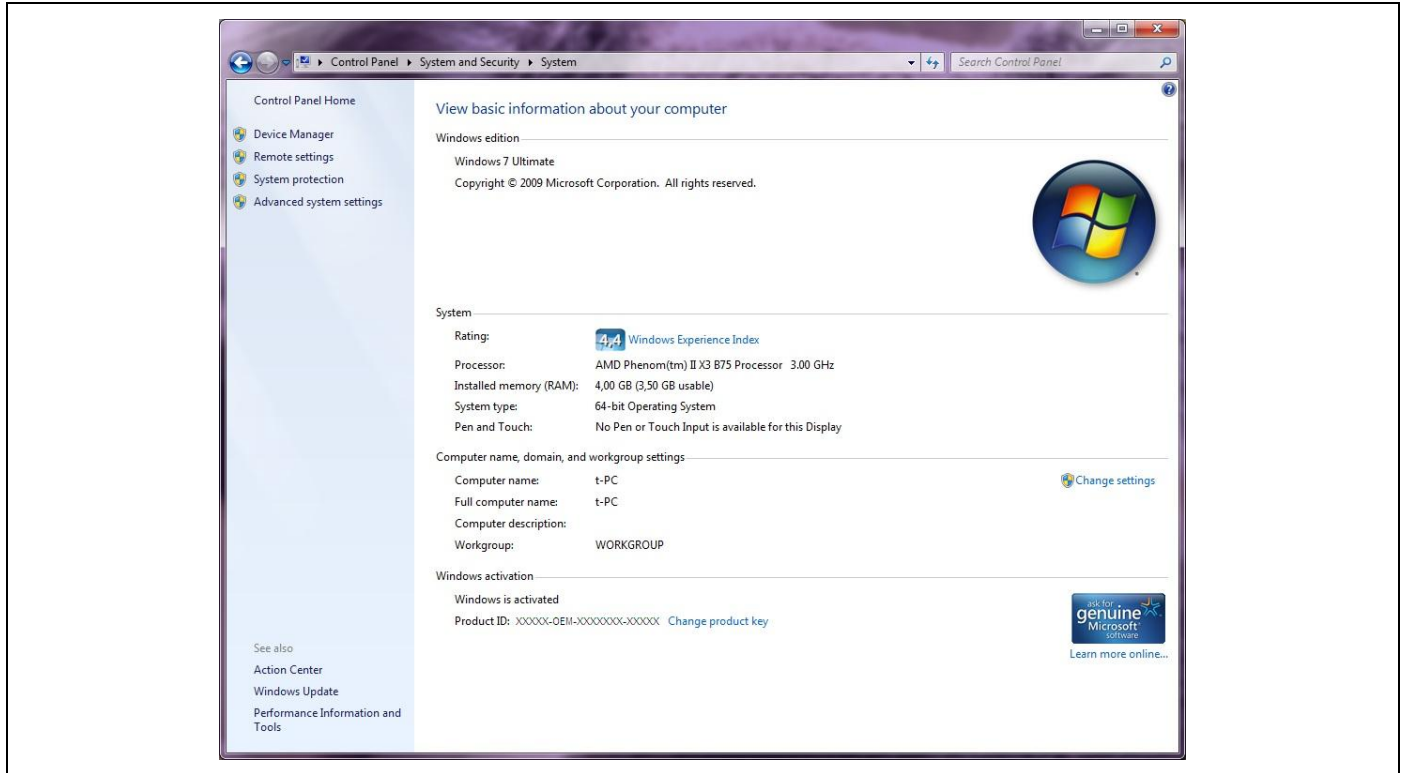
<sup>3</sup> These steps are related to Win 7 OS. With other operating systems, these steps might vary.

## 2 USB Driver Installation for a WIN7 Operating Systems

This section describes the procedure for USB driver installation using IDT's USB driver from IDT's website or the SSC Evaluation Software DVD and an example PC system with 64-bit WIN7 OS as shown in Figure 2.1. The installation procedure for a 32-bit WIN7 OS is identical. Before starting the installation procedure, check IDT's website for the latest USB driver version.<sup>1</sup>

**Important:** System administrator rights are required to install the USB driver on your PC!

**Figure 2.1 Hardware and Software Used for USB Driver Installation**



### 2.1. Installing the Basic USB Driver

Use the following steps to install the USB driver:

- Step 1: Close all programs currently running and disconnect all FTDI parts connected via USB.
- Step 2: Connect the CB using the USB cable included with the IDT Evaluation Kit.

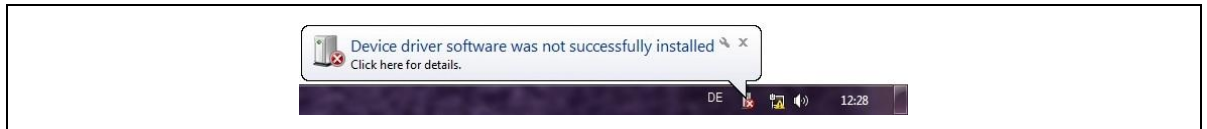
**Figure 2.2 "New Hardware Found" Message**



<sup>1</sup> <http://www.idt.com/SSC-COMM-BD>

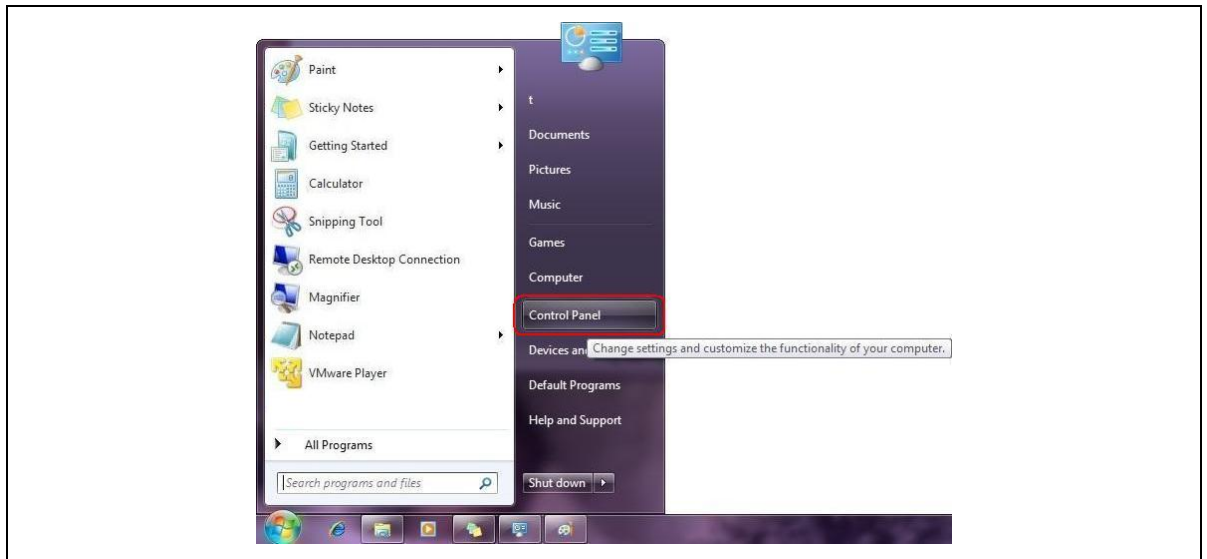
Step 3: Because IDT's USB driver is not WHQL-certified, Windows will not be able to detect the device automatically.

**Figure 2.3** "Installation Failed" Message



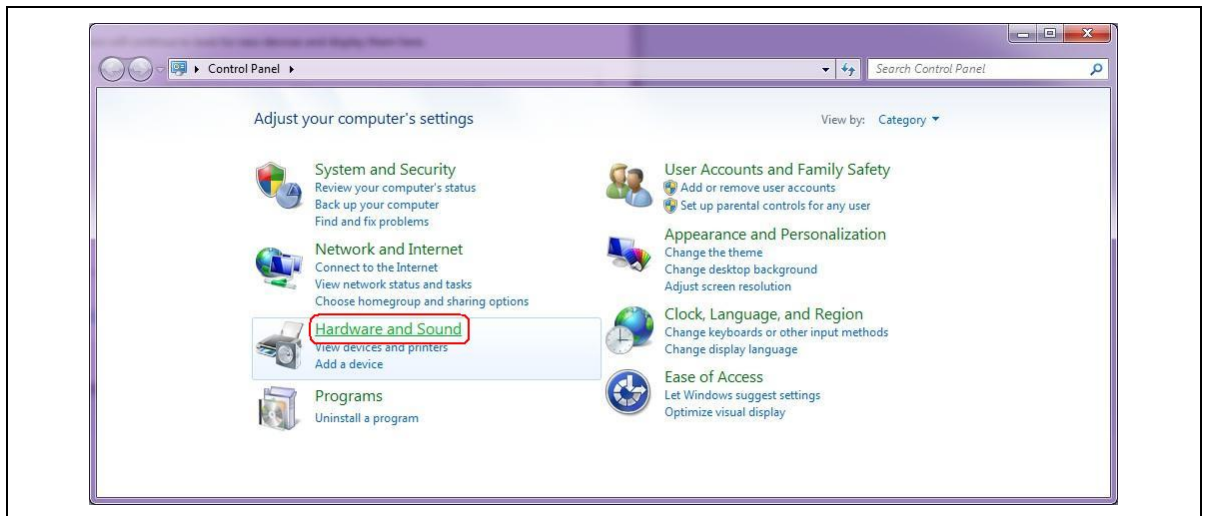
Step 4: Open the "Control Panel" menu.

**Figure 2.4** Control Panel



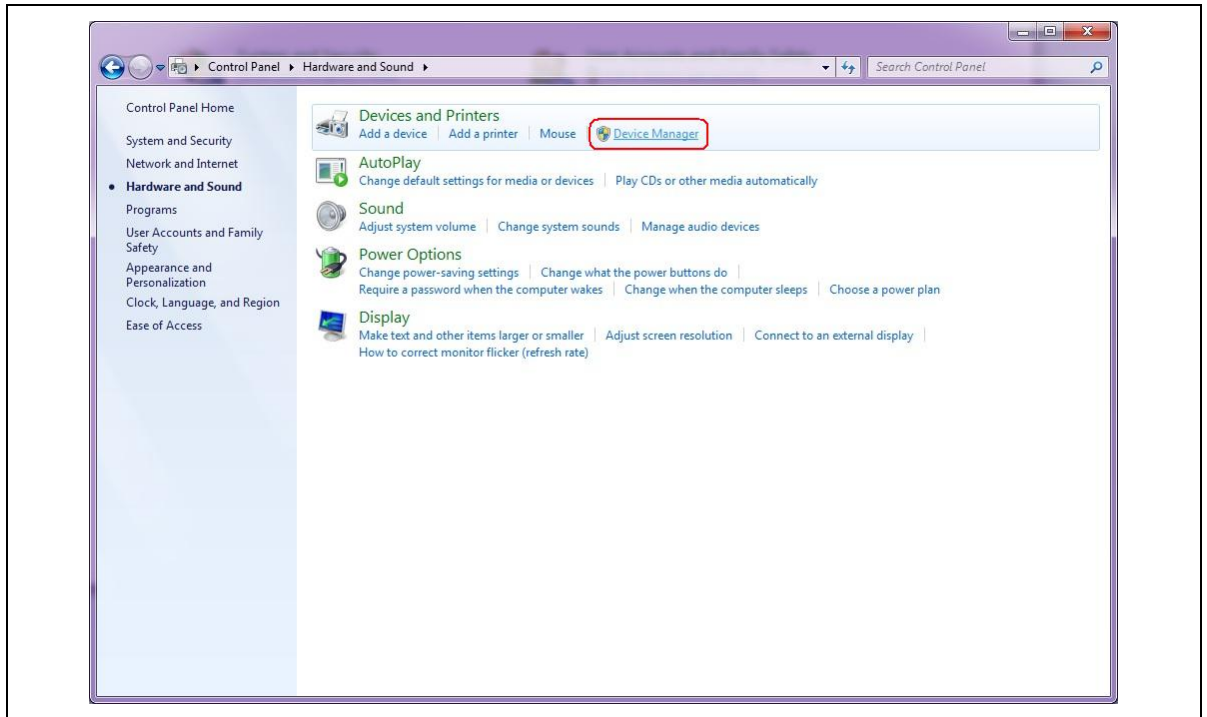
Step 5: Open the "Hardware and Sound" menu.

**Figure 2.5** "Hardware and Sound" Menu



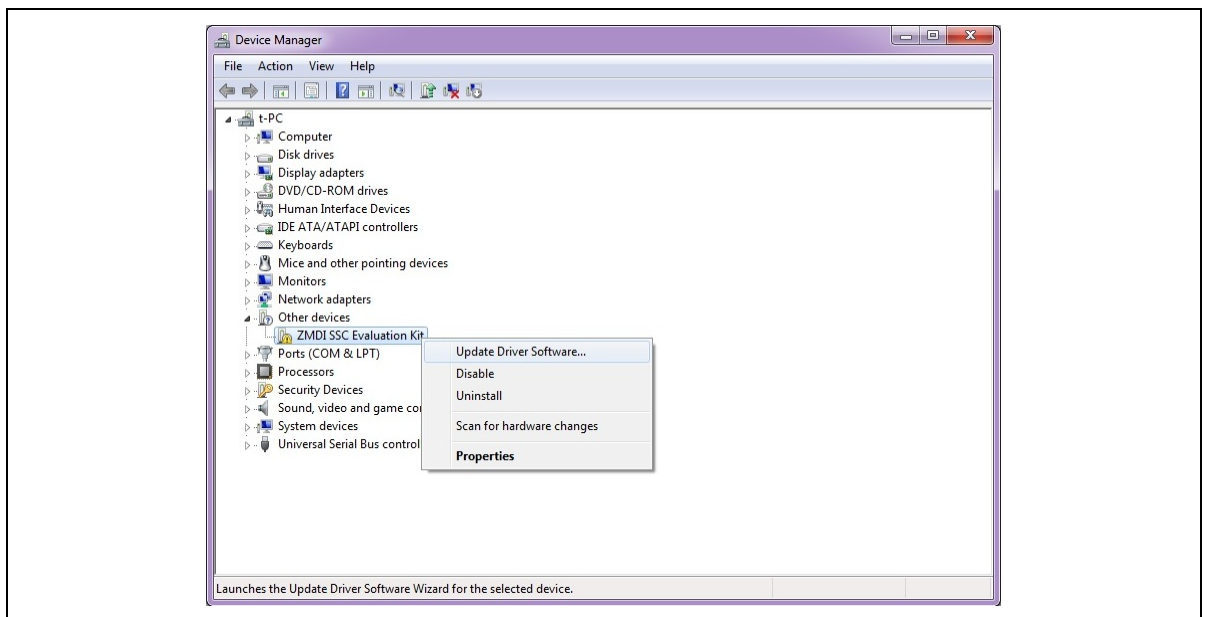
Step 6: Open the “Device Manager” menu.

**Figure 2.6** *Device Manager*



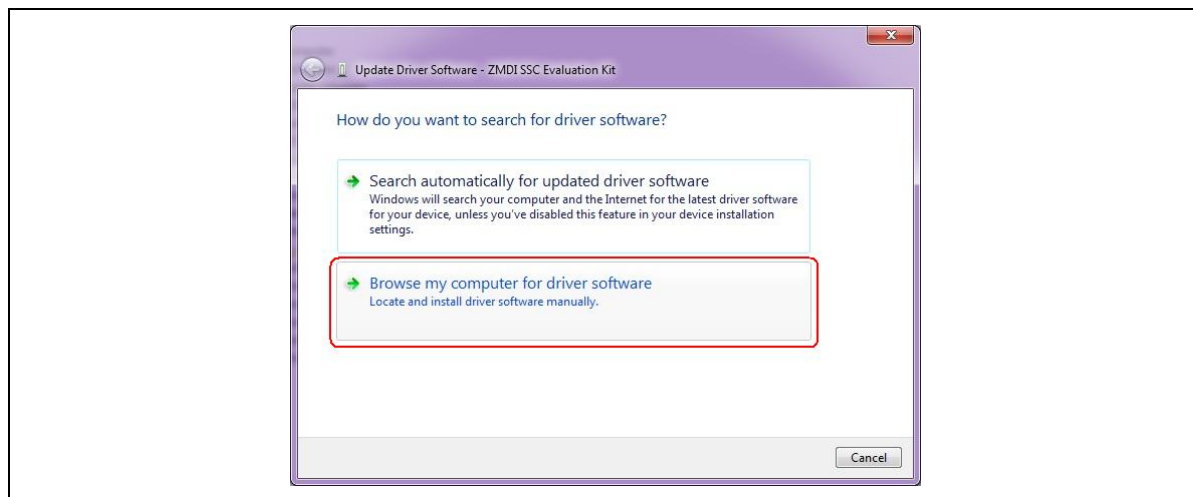
Step 7: Open “Other devices,” which will include the “ZMDI SSC Evaluation Kit.” Right-click on “ZMDI SSC Evaluation Kit” to open the context menu and select “Update Driver Software.”

**Figure 2.7** *“Update Driver Software”*



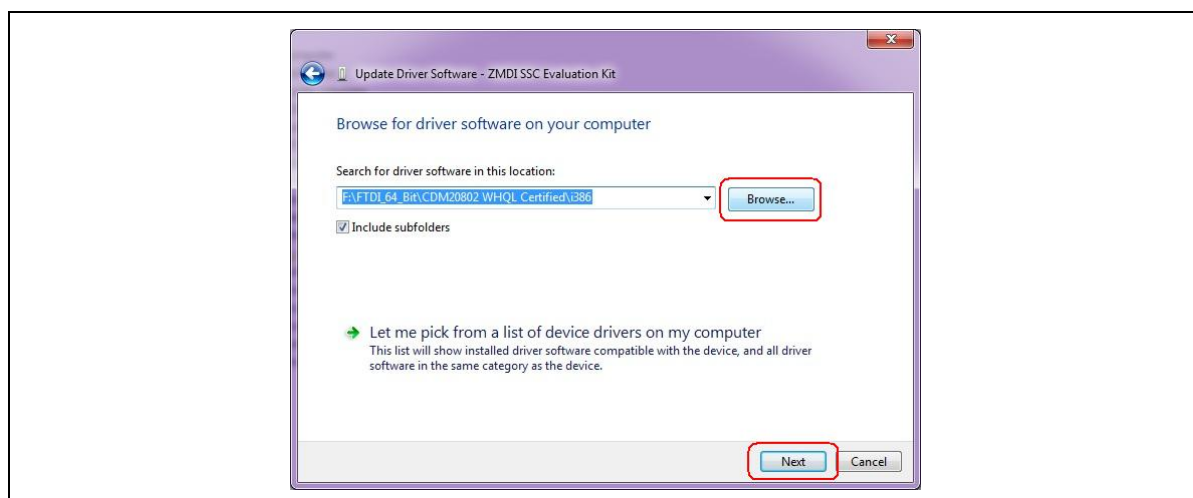
Step 8: Select “Browse my computer for driver software” in the next menu.

**Figure 2.8 Search for Driver**



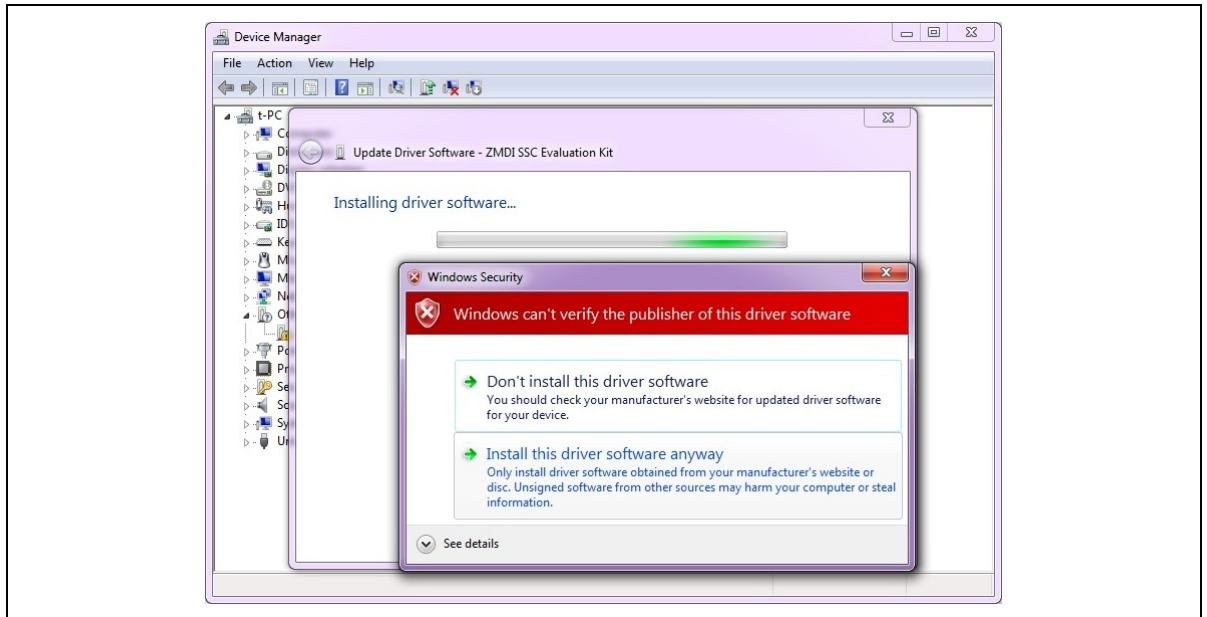
Step 9: Select the location where IDT's driver has been stored, browsing as needed to select either the DVD drive or the directory where the USB driver from IDT's website was stored. When the correct driver is selected, click “Next.”

**Figure 2.9 Browse for IDT's USB Driver**



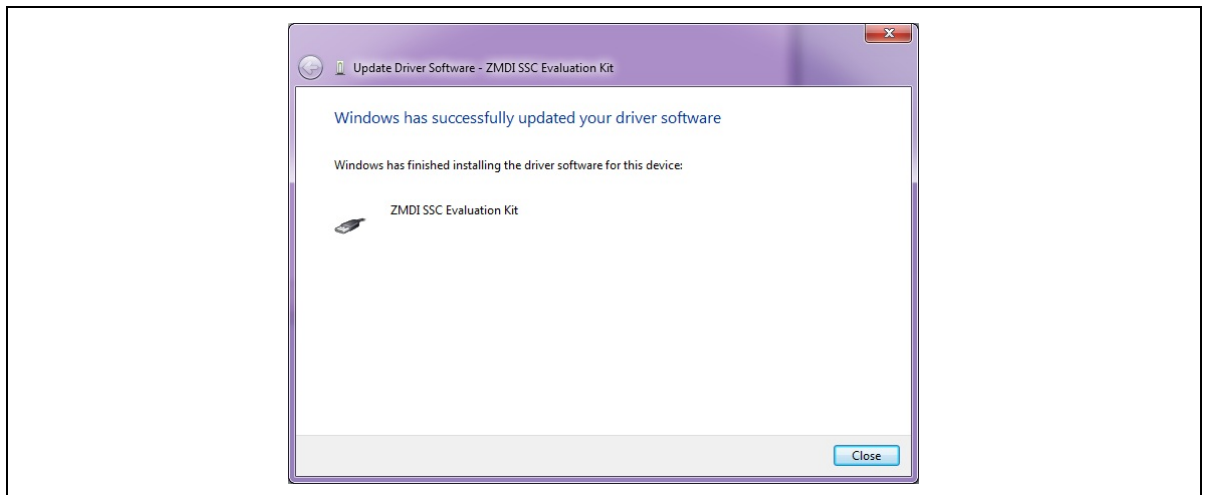
Step 10: Because IDT's USB driver is not WHQL-certified, a Windows® security message will occur. Select "Install this driver software anyway," and the driver installation process will move on.

**Figure 2.10 Windows® Security Message**



Step 11: The first part of the driver installation has been successfully completed if the message shown in Figure 2.11 appears. The next steps explain the steps for installation of the virtual COM port that is used for communication. This window can be closed.

**Figure 2.11 Successful Hardware Installation**





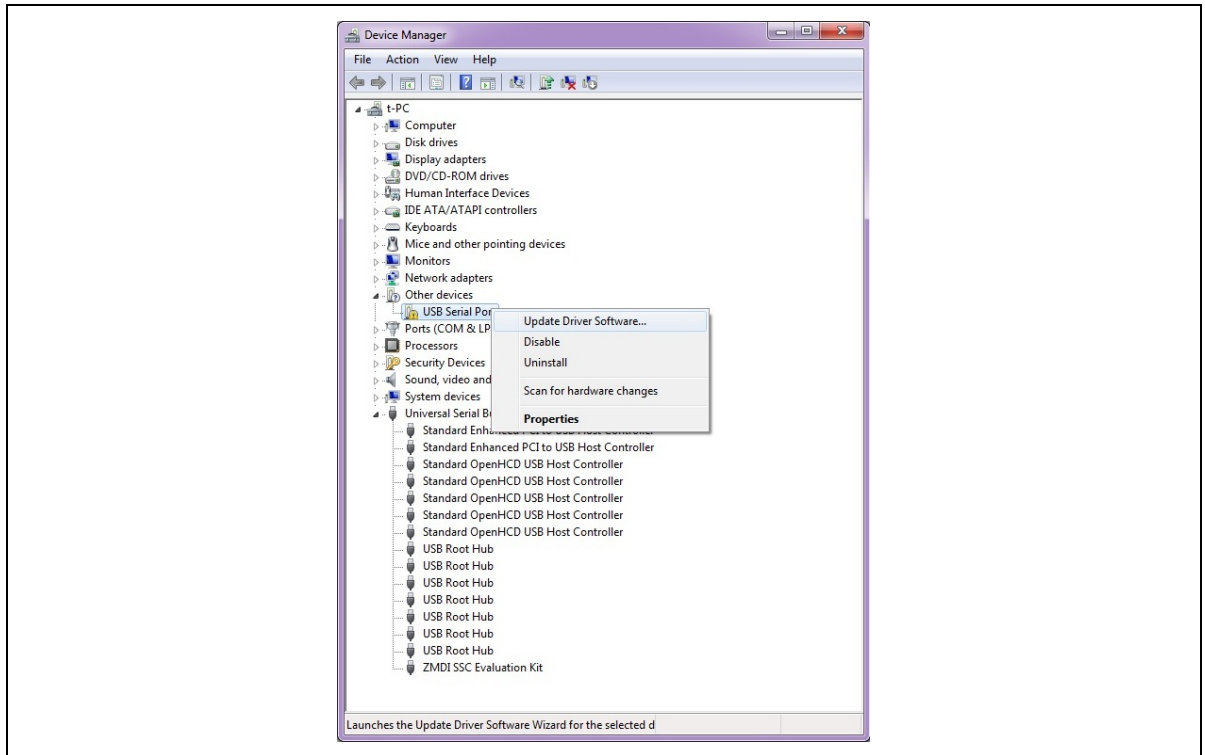
## 2.2. Installing the Virtual Com Port USB Driver

The following steps are needed to install the second part of the USB driver that will establish communication between the PC and the CB using the virtual COM port. The USB driver will cause the USB device to appear to the system as a virtual COM port. The steps are similar to them under Installing the Basic USB Driver.

**Use the following steps to install the USB driver:**

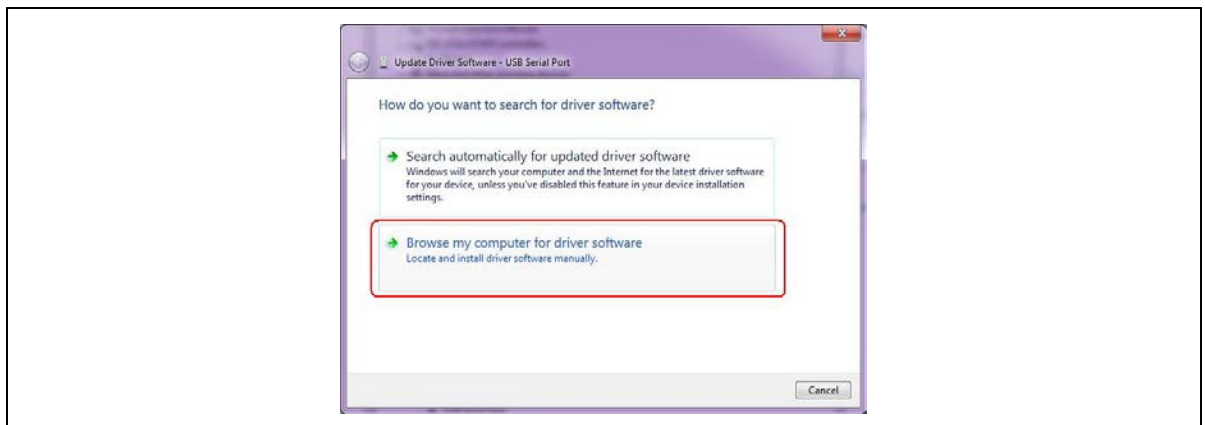
- Step 1: The following steps are needed to establish communication between the PC and the CB using the virtual COM port. The Device Manager will have changed because the “ZMDI SSC Evaluation Kit” will now be listed under “Universal Serial Bus.” Under “Other devices,” locate “USB Serial Port.” Right-click on “USB Serial Port” and open the “Update Driver Software” menu.

**Figure 2.12 “Update Driver Software”**



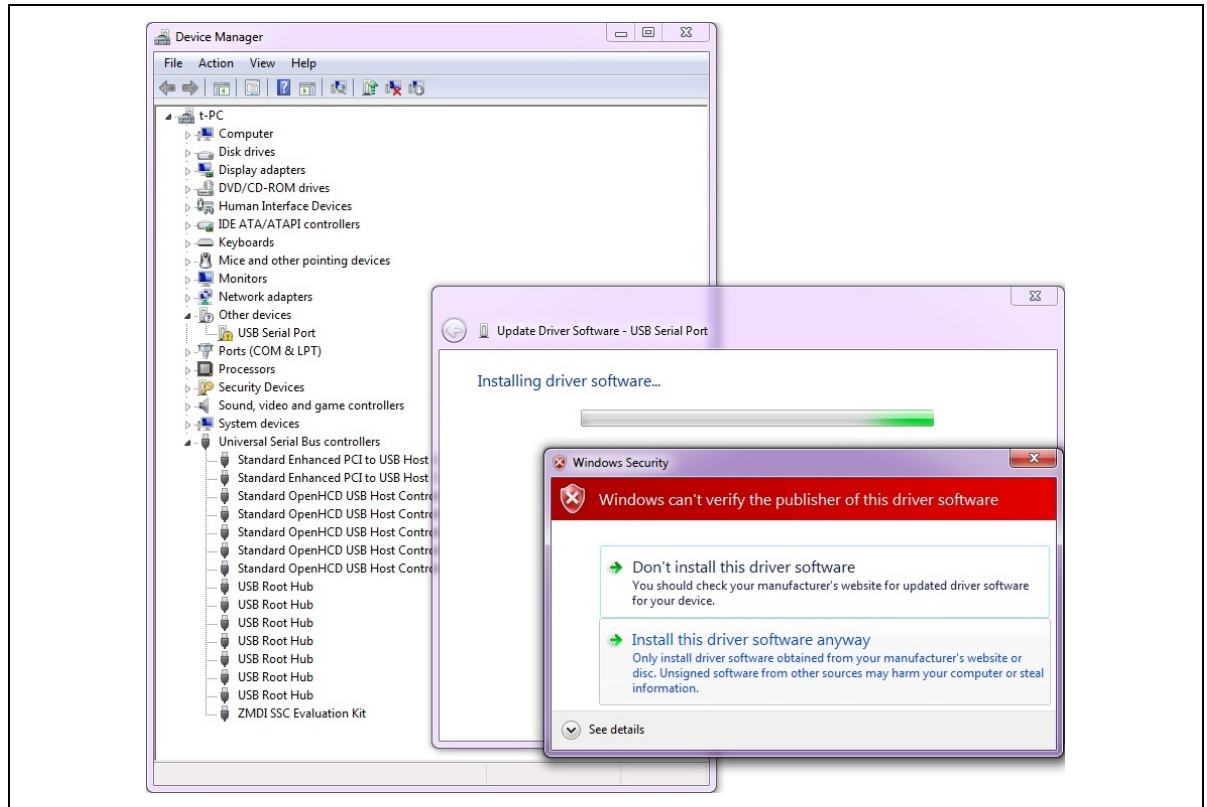
- Step 2: Select “Browse my computer for driver software” in the next menu.

**Figure 2.13 Search for the Driver**



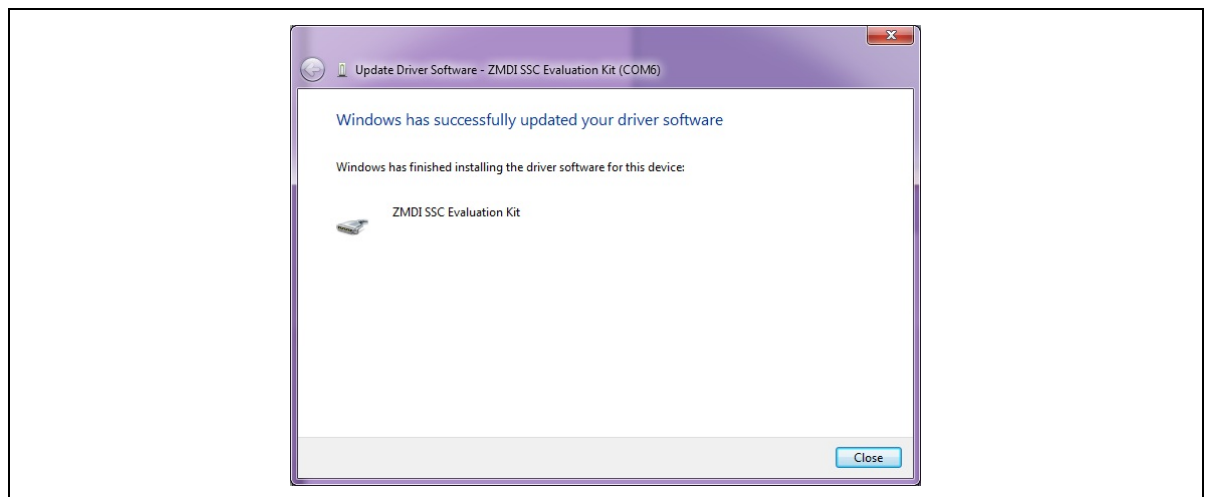
Step 3: Because this part of IDT's USB driver is also not WHQL-certified, a Windows® security message will occur again. Select "Install this driver software anyway," and the driver installation process will move on.

**Figure 2.14 Windows Security Message**



Step 4: The second part of the USB driver installation has been successfully completed if the message shown in Figure 2.15 appears. This window can be closed.

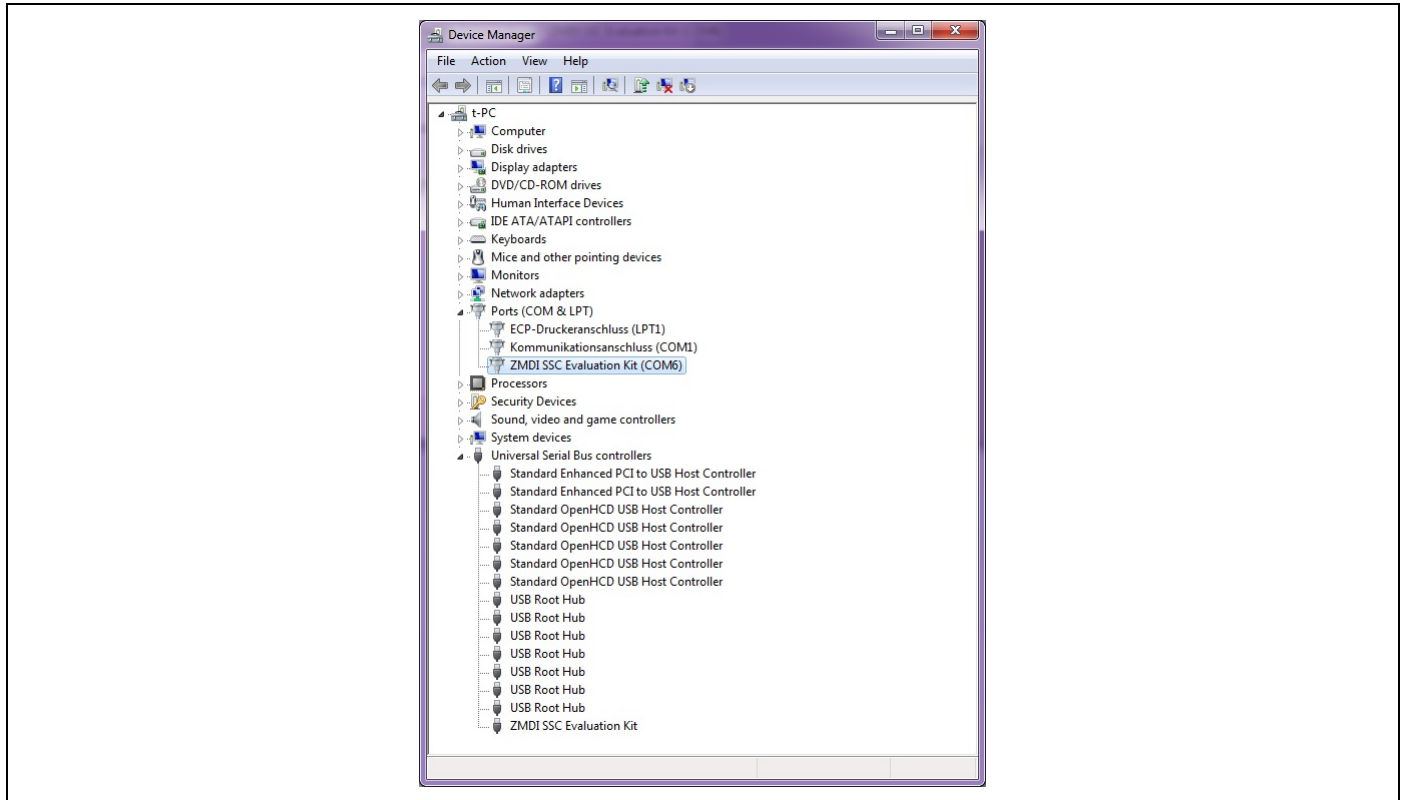
**Figure 2.15 Successful Hardware Installation**



### 2.3. Checking USB Port Operation

The Device Manager will have changed again because both drivers are successfully installed. The Device Manager can be used to detect the number of the virtual COM port used for communication between the PC and SSC CB.

**Figure 2.16 Contents of the Device Manager after Successful Installation**



The successful installation of both IDT's and FTDI's default USB driver is necessary to run any IDT SSC Evaluation Software or establish communication with the CB. Using a virtual COM port from 1 to 8 is recommended because it is guaranteed that all IDT software will be able to detect the CB in this range.

### 3 USB Driver Installation for a WIN XP Operating Systems

This section describes the procedure for USB driver installation using IDT's USB driver from IDT's website or the SSC Evaluation Software DVD and a PC system with WIN XP OS. Before starting the installation procedure, check IDT's website for the latest USB driver version.<sup>1</sup>

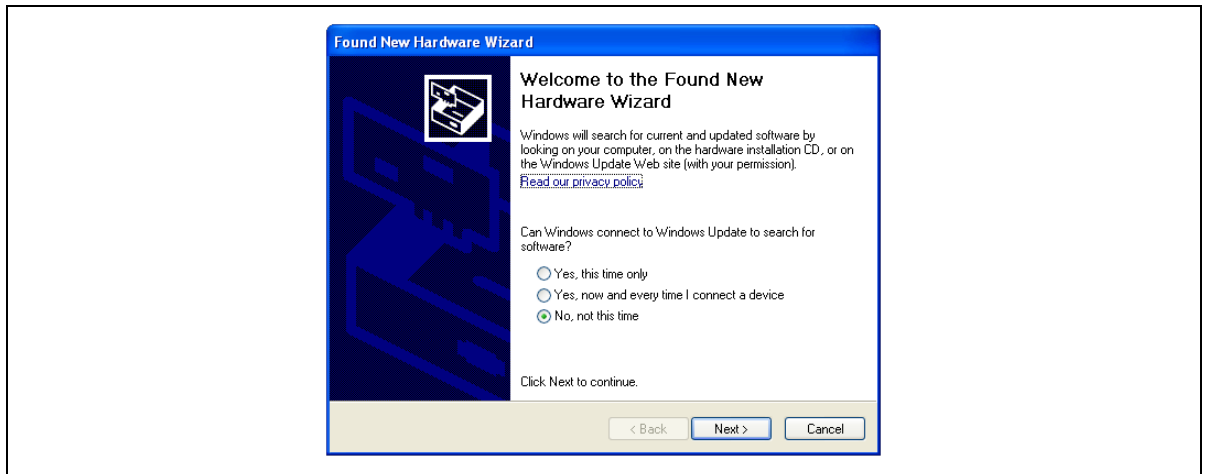
**Important:** System administrator rights are required to install the USB driver on your PC!

#### 3.1. Installing the Basic USB Driver

Use the following steps to install the USB driver:

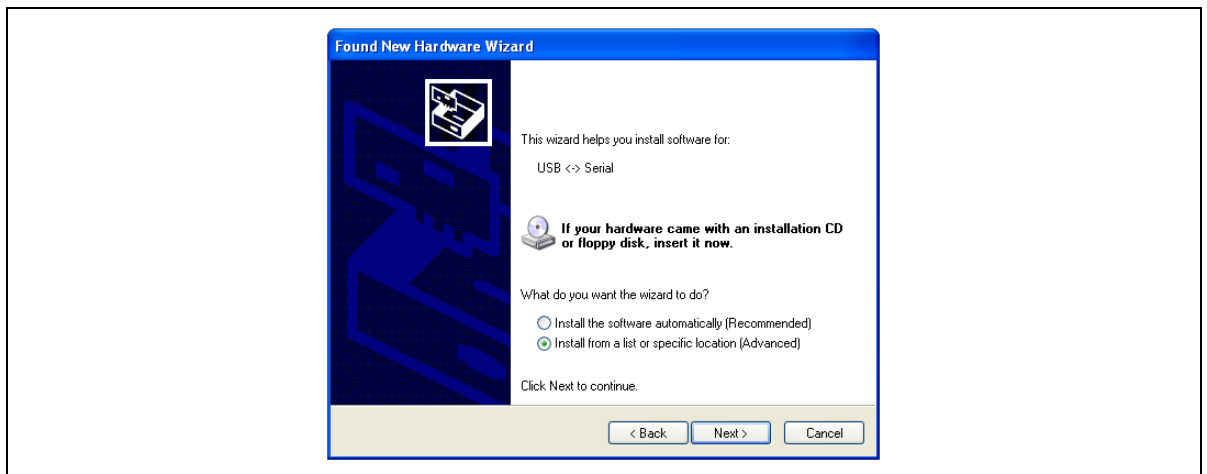
- Step 1: Close all programs currently running and disconnect all FTDI parts connected via USB.
- Step 2: The "Found New Hardware" wizard launches and brings up the following dialog box. Select "No, not this time," and click "Next."

**Figure 3.1 Found New Hardware Wizard – Welcome Window**



- Step 3: Select "Install from a list or specific location (Advanced)." Click "Next."

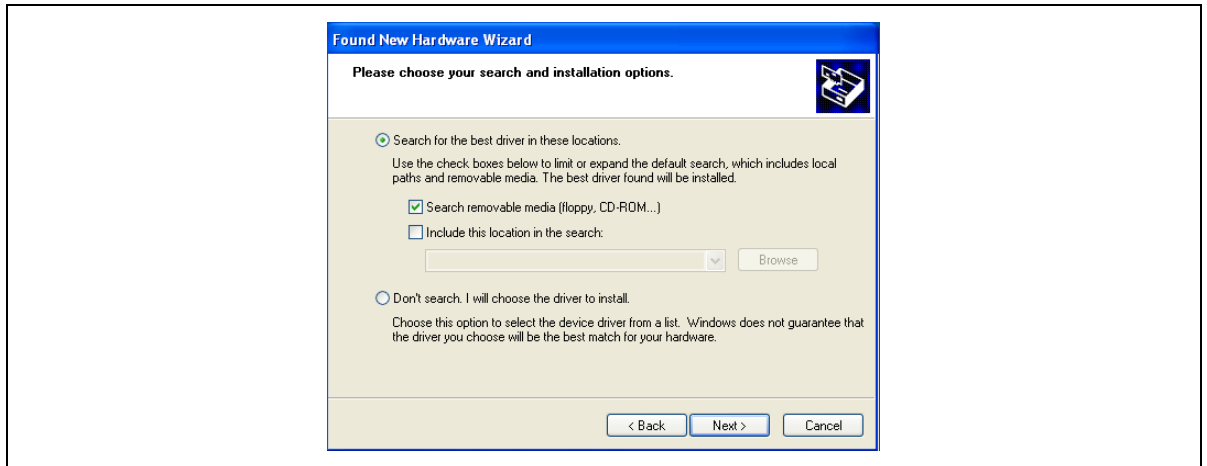
**Figure 3.2 Select USB Driver**



<sup>1</sup> <http://www.idt.com/SSC-COMM-BD>

Step 4: Select “Search removable media (floppy, CD-ROM),” and click “Next.”

**Figure 3.3 Search for USB Driver**



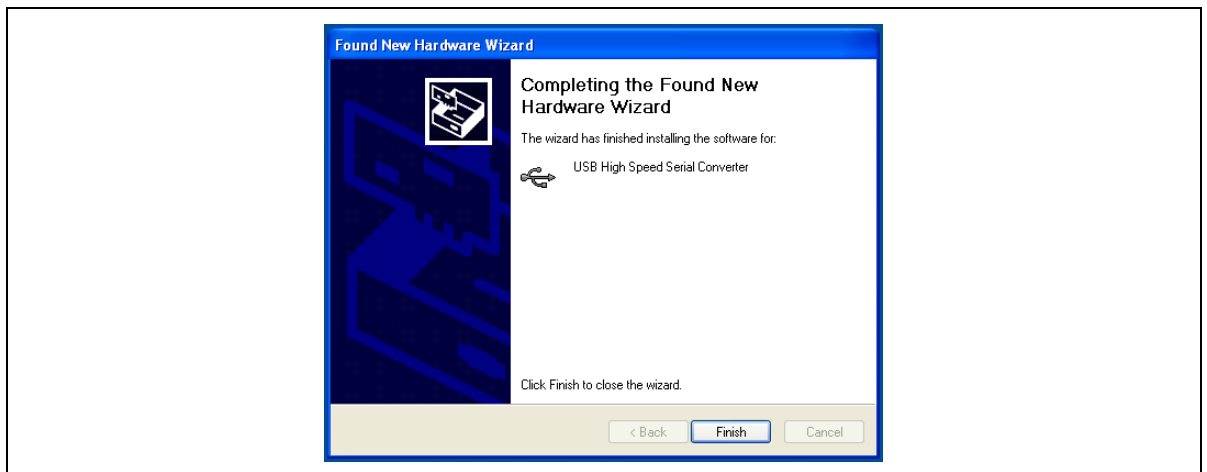
Step 5: When the warning about failing logo testing appears, click “Continue Anyway” because this concern is not applicable.

**Figure 3.4 Windows® XP – Logo Test**



Step 6: Finish the driver installation by clicking “Finish.”

**Figure 3.5 Successful Hardware Installation**

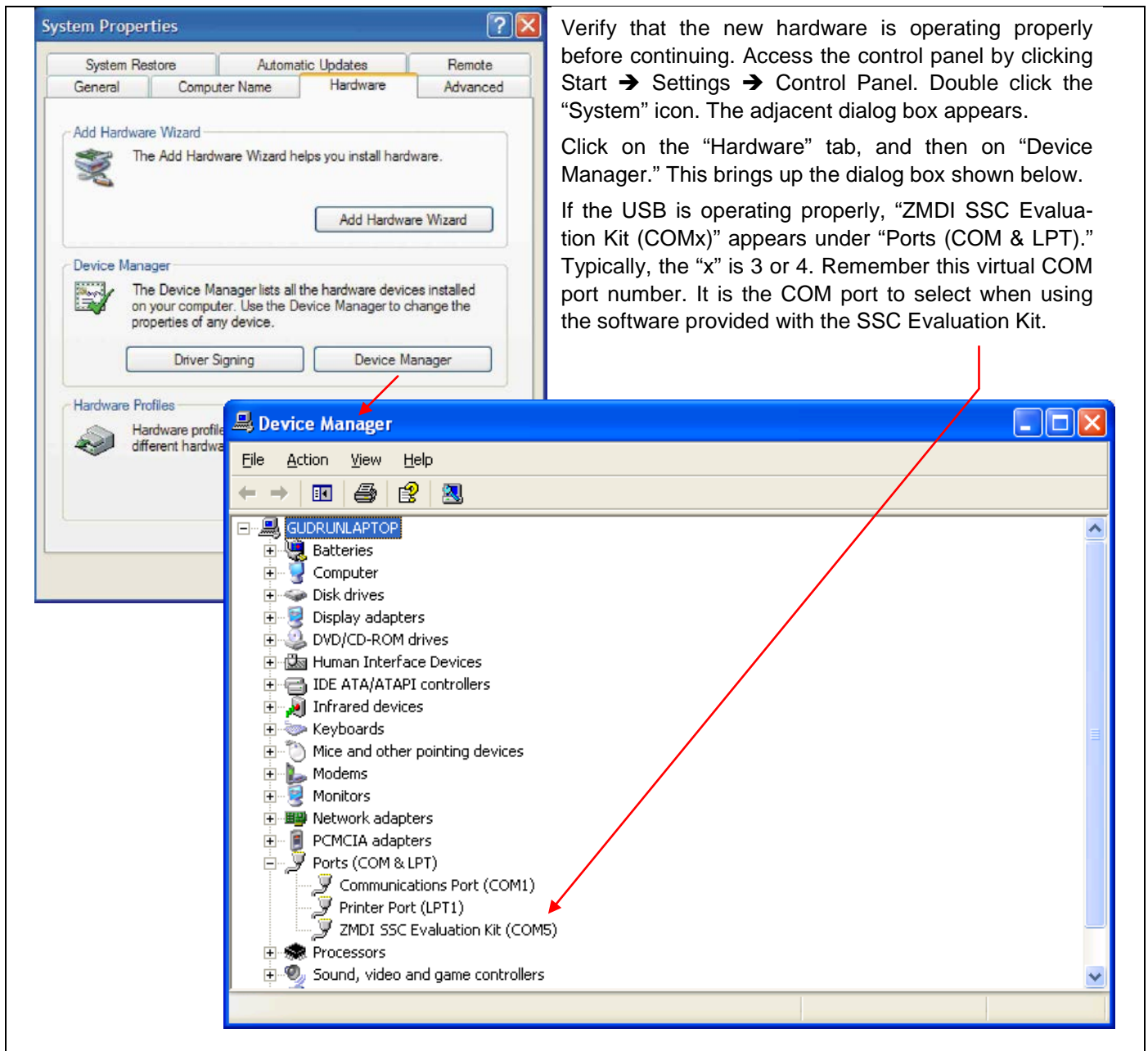


### 3.2. Installing the Virtual Com Port USB Driver

The second required USB driver causes the USB device to appear to the system as a virtual COM port. Follow the same steps as outlined under Installing the Basic USB Driver above to complete this second driver installation.

### 3.3. Checking USB Port Operation

**Figure 3.6** Successful Hardware Installation



## 4 Changing the Product ID of the SSC Communication Board V3.3

This section describes the procedure for changing the Product ID (PID) of the CB. This is only needed if the message shown in Figure 2.10 and Figure 2.14 should be prevented and the default FTDI driver should be used. This can be the case if the security requirements of the user's IT department do not allow using non-WHQL-certified drivers.

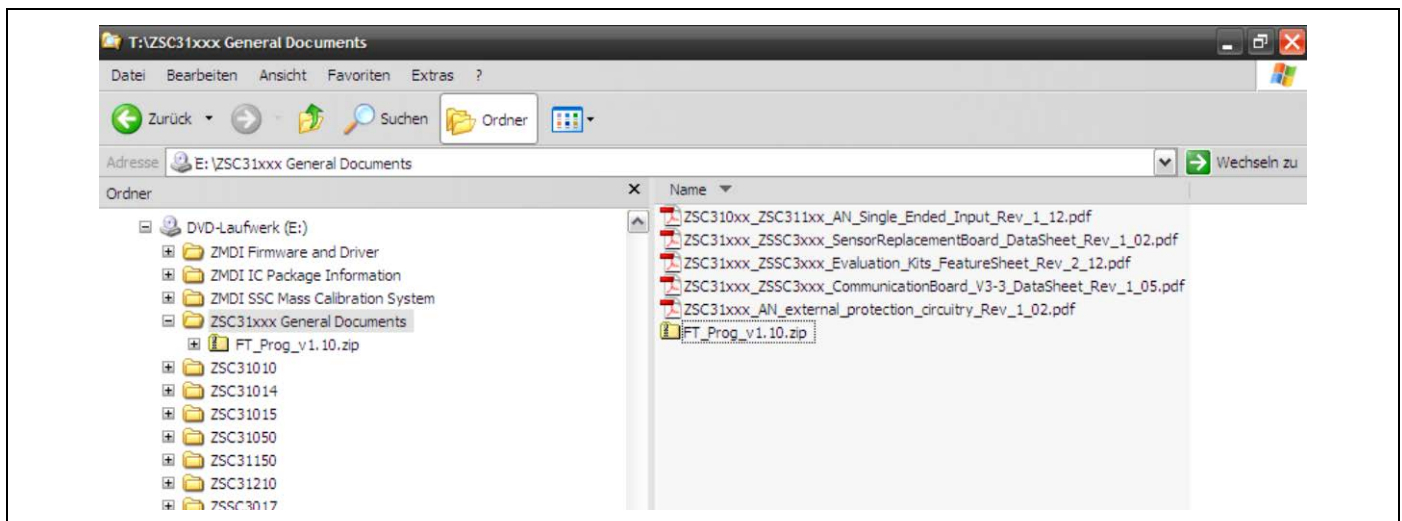
### 4.1. FT\_Prog Tool for Changing the PID

FT\_PROG, a tool from FTDI, can be used to change the PID of the CB. Version 1.10 of this tool can be downloaded from FTDI's website <sup>1</sup> or found on the DVD of IDT's SSC Evaluation Kit or Mass Calibration System. This tool does not require an installation process, and it is only necessary to unzip the file.

**Note:** Reprogramming the PID requires an installed USB driver. Otherwise the FT\_PROG tool is not able to detect the SSC CB!

**Note:** FT\_PROG requires Microsoft .NET Framework 2.0 installed on the user's system. <sup>2</sup>

**Figure 4.1** Location of FT\_Prog\_v1.10.zip on the SSC Evaluation Software DVD



<sup>1</sup> <http://www.ftdichip.com/Support/Utilities.htm> (Use the search function of the browser and look for FT\_PROG.)

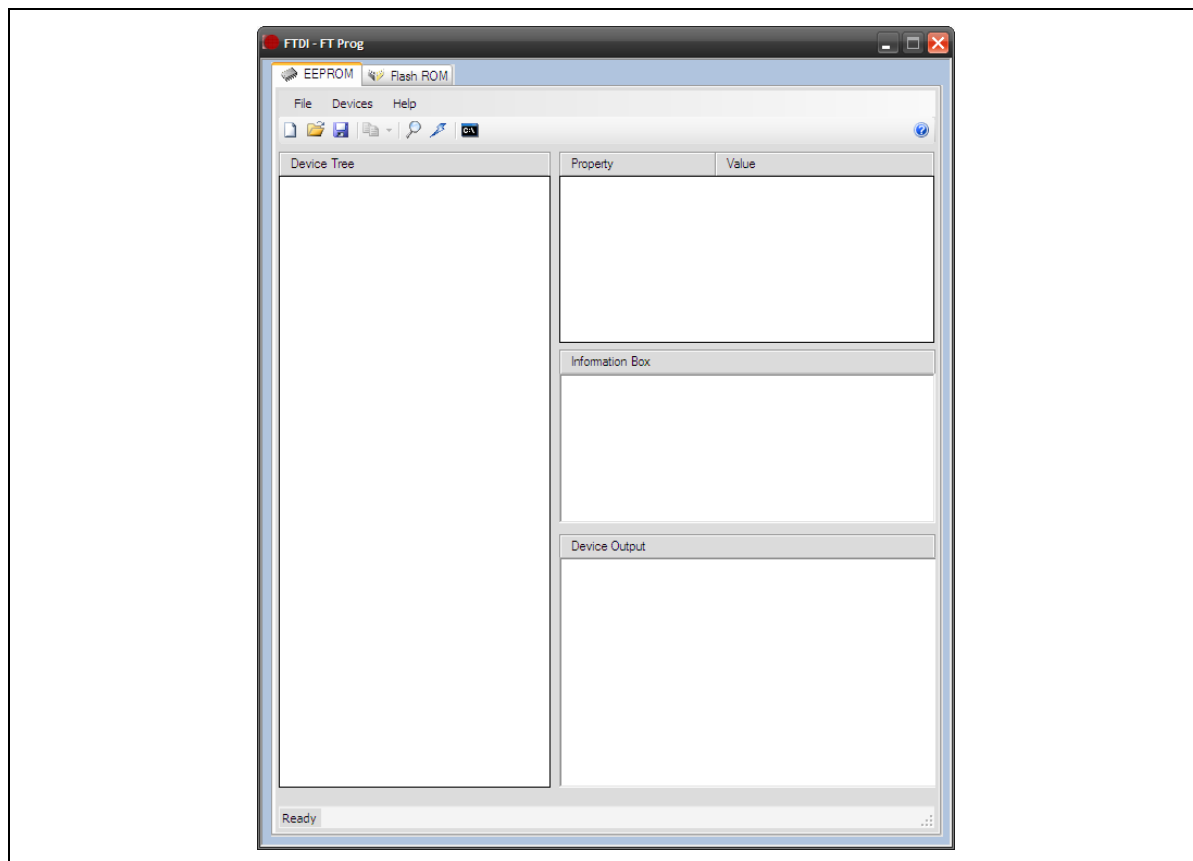
<sup>2</sup> Microsoft .NET Framework 2.0 can be downloaded from the Microsoft website:  
<http://www.microsoft.com/downloads/details.aspx?FamilyID=0856EACB-4362-4B0D-8EDD-AAB15C5E04F5&displaylang=en>

## 4.2. Procedure for Changing the PID

Use the following steps for reprogramming the PID. (Screenshots were recorded with Windows XP 32 bit.)

- Step 1: Unzip *FT\_Prog\_v1.10.zip* from the SSC Evaluation Kit or Mass Calibration System DVD (or the file from FTDI's website).
- Step 2: Disconnect the CB (and all other USB devices) from the PC.
- Step 3: Start *FT\_PROG.exe*.<sup>1</sup>

**Figure 4.2 Main Window of FT\_PROG Revision 1.10**



- Step 4: Connect the CB and PC via the USB cable included with the IDT Evaluation Kit.
- Step 5: Find the connected CB by clicking the "Scan and Parse" button (magnifying glass icon), which should be marked with a red outline.

<sup>1</sup> It can happen that the main window of the program does not show up very quickly. Please check the Task Manager before starting the program multiple times!



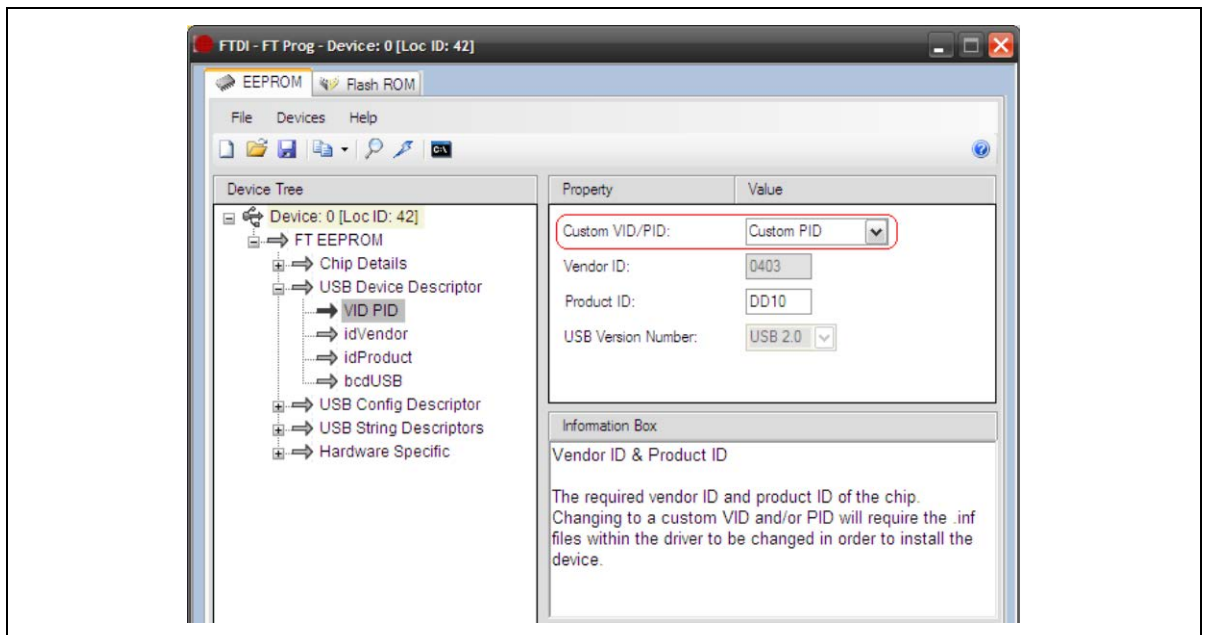
**Figure 4.3 Searching for the Connected SSC Communication Board**



Step 6: Extend “USB Device Descriptor” and select “VID PID.”

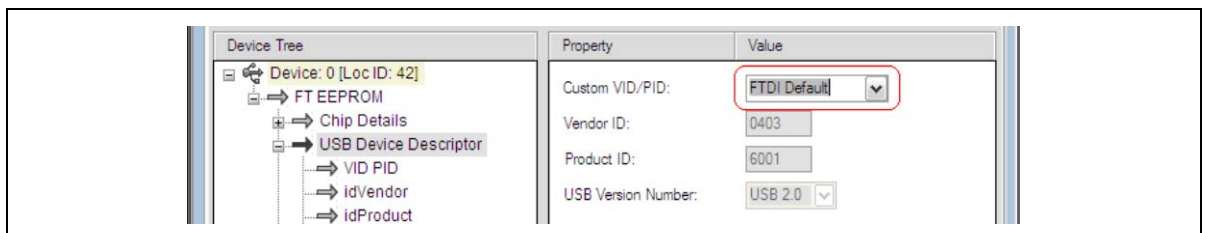
**Note:** If the user’s device uses “FTDI default” as the value for “Custom VID PID,” it is not necessary to change settings at the FTDI device and the SSC is ready to use FTDI’s certified USB driver.<sup>1</sup>

**Figure 4.4 SSC Communication Board with IDT Product ID Detected**



Step 7: Change the value for “Custom VID/PID” to “FTDI default.” The input boxes for “Vendor ID” and “Product ID” are disabled.

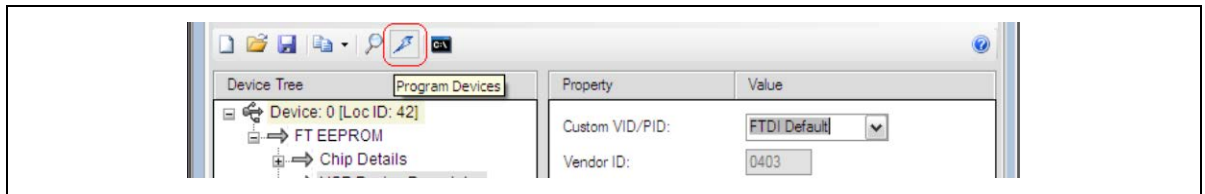
**Figure 4.5 Changes Required for 64-Bit OS**



Step 8: Click on the “Program Devices” button to open the programming menu.

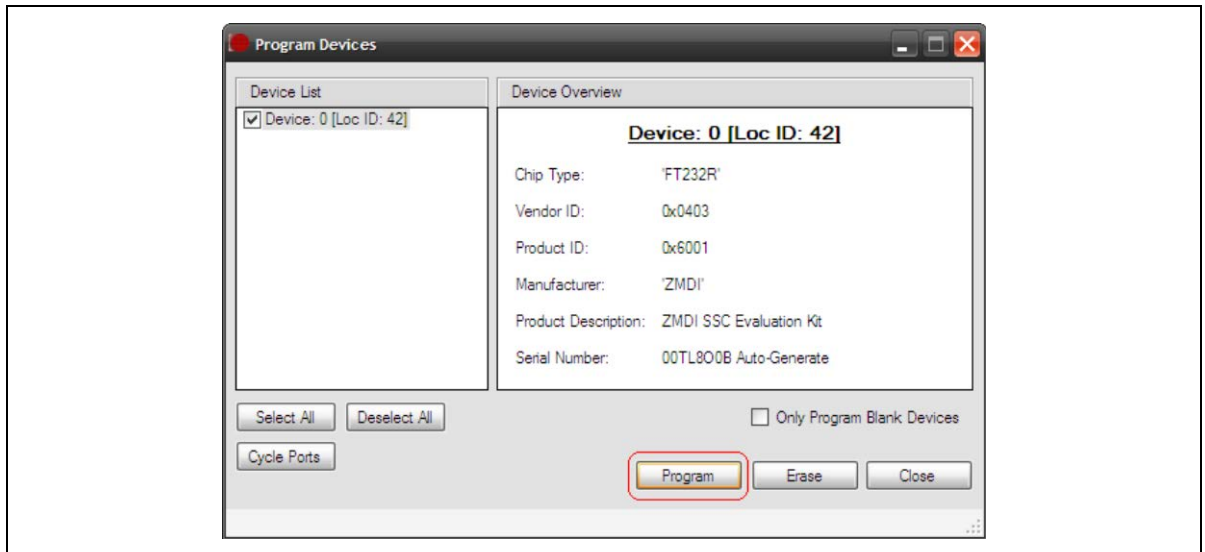
<sup>1</sup> Since no settings need to be changed, the program can be closed without any change on FTDI’s device.

**Figure 4.6 “Program Devices” Button**



Step 9: Start the programming procedure by clicking on the “Program” button.

**Figure 4.7 Start Programming Procedure**



Step 10: Reprogramming is complete when “Finished Programming” appears.

**Figure 4.8 Programming Finished**



Now the SSC Communication Board V3.3 is ready to use the original WHQL-certified USB driver from FTDI and FT\_Program can be closed. Disconnect and then reconnect the CB to the PC so that Windows® will use the new PID.

## 5 Related Documents

Document
SSC Communication Board Datasheet

Visit IDT's website <http://www.idt.com/SSC-COMM-BD> or contact your nearest sales office for the latest version of these documents.

## 6 Glossary

Term	Description
CB	Communication Board
OS	Operating System
PID	Product ID
SSC	Sensor Signal Conditioner
VID	Vendor ID
WHQL	Microsoft's Windows Hardware Quality Labs

## 7 Document Revision History

Revision	Date	Description
1.00	November 18, 2010	First release of document.
1.01	November 25, 2010	Add section "USB Driver Installation" Remove all hints related to 64bit OS in "PID description" rename AN to "Installation of USB driver" because the AN describes complete characteristics of ZMDI's USB driver (previous name: "Change PID")
1.02	June 8, 2011	Revision of company name references from ZMD to ZMDI. Minor edits. Add section "USB Driver Installation for a WIN XP Operating Systems"
	April 20, 2016	Changed to IDT branding.



## IMPORTANT NOTICE AND DISCLAIMER

RENESAS ELECTRONICS CORPORATION AND ITS SUBSIDIARIES ("RENESAS") PROVIDES TECHNICAL SPECIFICATIONS AND RELIABILITY DATA (INCLUDING DATASHEETS), DESIGN RESOURCES (INCLUDING REFERENCE DESIGNS), APPLICATION OR OTHER DESIGN ADVICE, WEB TOOLS, SAFETY INFORMATION, AND OTHER RESOURCES "AS IS" AND WITH ALL FAULTS, AND DISCLAIMS ALL WARRANTIES, EXPRESS OR IMPLIED, INCLUDING, WITHOUT LIMITATION, ANY IMPLIED WARRANTIES OF MERCHANTABILITY, FITNESS FOR A PARTICULAR PURPOSE, OR NON-INFRINGEMENT OF THIRD-PARTY INTELLECTUAL PROPERTY RIGHTS.

These resources are intended for developers who are designing with Renesas products. You are solely responsible for (1) selecting the appropriate products for your application, (2) designing, validating, and testing your application, and (3) ensuring your application meets applicable standards, and any other safety, security, or other requirements. These resources are subject to change without notice. Renesas grants you permission to use these resources only to develop an application that uses Renesas products. Other reproduction or use of these resources is strictly prohibited. No license is granted to any other Renesas intellectual property or to any third-party intellectual property. Renesas disclaims responsibility for, and you will fully indemnify Renesas and its representatives against, any claims, damages, costs, losses, or liabilities arising from your use of these resources. Renesas' products are provided only subject to Renesas' Terms and Conditions of Sale or other applicable terms agreed to in writing. No use of any Renesas resources expands or otherwise alters any applicable warranties or warranty disclaimers for these products.

(Disclaimer Rev.1.01)

### Corporate Headquarters

TOYOSU FORESIA, 3-2-24 Toyosu,  
Koto-ku, Tokyo 135-0061, Japan  
[www.renesas.com](http://www.renesas.com)

### Contact Information

For further information on a product, technology, the most up-to-date version of a document, or your nearest sales office, please visit [www.renesas.com/contact-us/](http://www.renesas.com/contact-us/).

### Trademarks

Renesas and the Renesas logo are trademarks of Renesas Electronics Corporation. All trademarks and registered trademarks are the property of their respective owners.