

RL78/G13

R01AN2762EJ0100

Low-power Consumption Operation (CSI in SNOOZE Mode)

Rev. 1.00

Apr.16.2015

CC-RL

Introduction

This application note explains how to make low-power consumption settings for CSI slave reception in SNOOZE mode. The sample application covered in this application note uses the SNOOZE mode to receive data through the CSI communication without starting the CPU. It compares the receive data with a preset expected value and displays the result on an LED.

Target Device

RL78/G13

When applying the sample program covered in this application note to another microcomputer, modify the program according to the specifications for the target microcomputer and conduct an extensive evaluation of the modified program.

Contents

1.	Specifications	4
2.	Operation Check Conditions	7
3.	Related Application Notes	7
4.	Description of the Hardware	8
4.1	Hardware Configuration Example	8
4.2	List of Pins to be Used	9
5.	Software Description.....	10
5.1	Operation Outline	10
5.2	File Configuration.....	12
5.3	List of Option Byte Settings.....	13
5.4	List of Constants.....	13
5.5	List of Variables	14
5.6	List of Functions.....	15
5.7	Function Specifications	16
5.8	Flowcharts	21
5.8.1	Initialization Function.....	22
5.8.2	System Initialization function.....	23
5.8.3	I/O Port Setup	24
5.8.4	CPU Clock Setup.....	26
5.8.5	SAU0 Setup	27
5.8.6	CSI00 Initialization.....	30
5.8.7	Interval Timer Setup.....	37
5.8.8	External Interrupt Input Setup	38
5.8.9	Main Processing	39
5.8.10	Enabling the CSI00 in SNOOZE Mode.....	41
5.8.11	Disabling the CSI00 in SNOOZE Mode.....	43
5.8.12	Starting CSI00 Reception	44
5.8.13	Stopping CSI00 Reception	45
5.8.14	Setting up the CSI00 Receive Buffer.....	46
5.8.15	CSI00 Communication End Interrupts.....	47
5.8.16	Callback Function for CSI00 Communication End Interrupts.....	48
5.8.17	Getting Receive End Flag.....	49
5.8.18	Clearing the Receive End Flag	50
5.8.19	Starting INTP0 Operation.....	51
5.8.20	Stopping INTP0	52
5.8.21	INTP0 Interrupt	53
5.8.22	Starting Interval Timer	54
5.8.23	Stopping Interval Timer.....	55
5.8.24	Interval Timer Interrupt	56
5.8.25	Getting the Switch State	57
5.8.26	Clearing the Switch State.....	58
5.8.27	Getting the Interval Timer Interrupt Occurrence Flag	59
5.8.28	Clearing the Interval Timer Interrupt Occurrence Flag	60
6.	Sample Code	61
7.	Documents for Reference	61

Revision Record 62

General Precautions in the Handling of MPU/MCU Products 63

1. Specifications

This application note explains how to make low-power consumption settings for CSI slave reception in SNOOZE mode. The sample application covered in this application note sets up the serial array unit (SAU) for CSI reception, enables the SNOOZE mode, then sets the BUSY signal to 0. Subsequently, it executes the STOP instruction. When an input is detected at the SCK pin in STOP mode, the application starts data reception in SNOOZE mode. It compares the data received via CSI with the predefined data. Then, it turns on an LED if a match is found and turns off the LED otherwise.

The BUSY signal is used to indicate the busy state of the slave device. “0” indicates that the device is ready for communication. “1” indicates that the device is not ready for communication. The master device checks that the other device is not busy (handshakes) before sending its data.

Caution: The SNOOZE mode can be enabled only when the high-speed on-chip oscillator clock is selected as the CPU/peripheral hardware clock (f_{CLK}).

Table 1.1 lists the peripheral functions to be used for low-power consumption operation and their uses. Figure 1.1 shows the outline of the operation.

Table 1.1 Peripheral Functions to be Used and their Uses

Peripheral Function	Use
Channel 0 of serial array unit 0	Used for slave mode reception via CSI00.
External interrupt input (INTP0)	Switch input and start of CSI00 reception.
Interval timer	Generates a wait state till the switch state is set.
Port I/O	<ul style="list-style-type: none"> • LED1 lighting control Turns on the LED1 with a switch input in HALT mode. • LED2 lighting control Turns on the LED2 when the receive data matches the expected value. • BUSY signal output 0: Ready for communication, 1: Not ready for communication

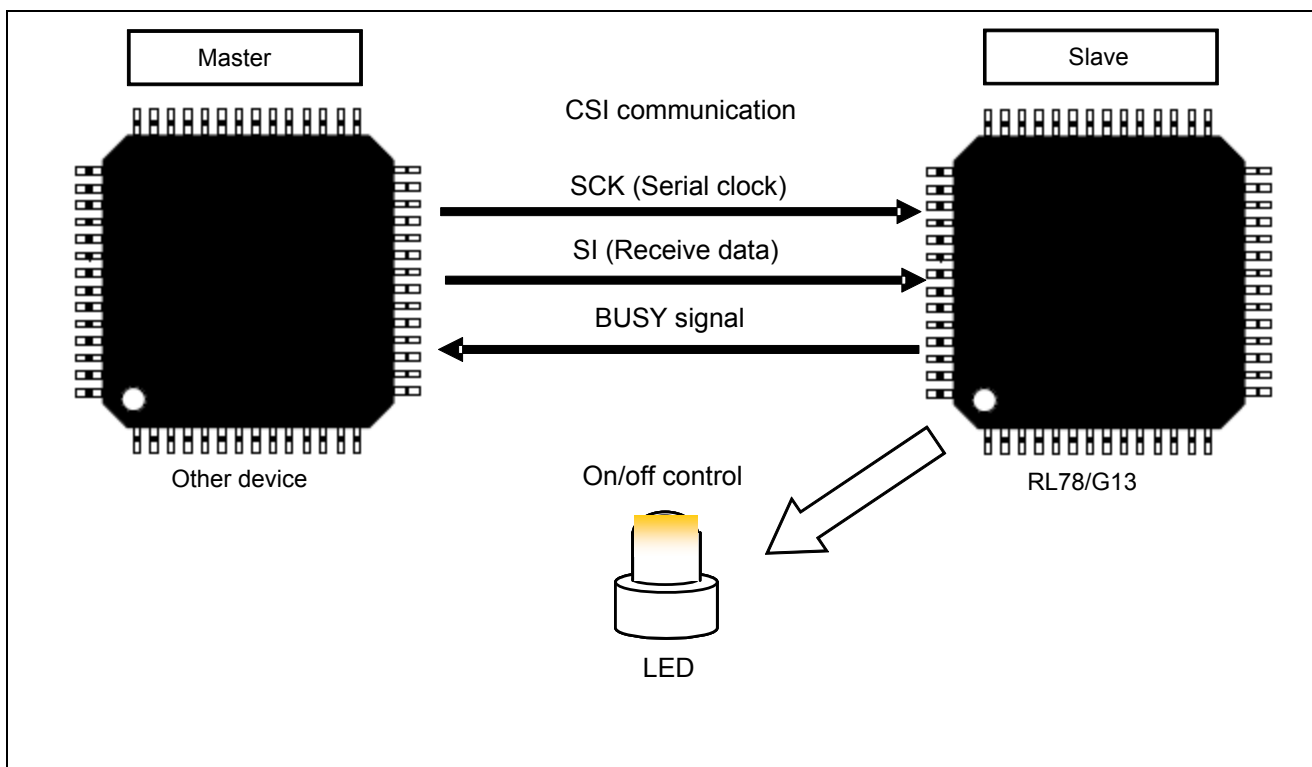


Figure 1.1 Outline of the Operation

Figure 1.2 shows the outline of CSI slave reception in SNOOZE mode. The HALT mode is generally used to receive data via CSI. When a device which supports the SNOOZE mode is to be used, the STOP mode, which provides lower operating current than that in the HALT mode, is available in addition to the HALT mode. During CSI reception in STOP mode, the application switches from STOP mode to SNOOZE mode upon detection of the falling edge of the SCK signal and then receives data via CSI without starting the CPU. The SNOOZE mode can be set only when the high-speed on-chip oscillator clock is selected as the CPU/peripheral hardware clock (f_{CLK}).

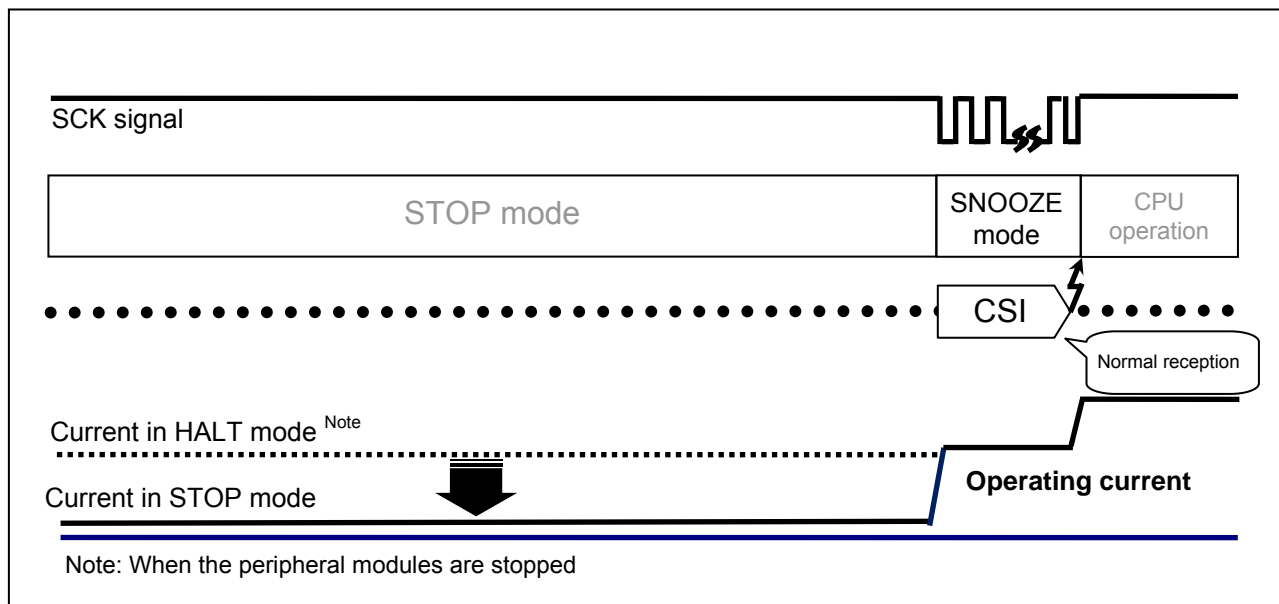


Figure 1.2 Outline of CSI Slave Reception in SNOOZE Mode

Figure 1.3 shows the timing chart for the operation in the SNOOZE mode.

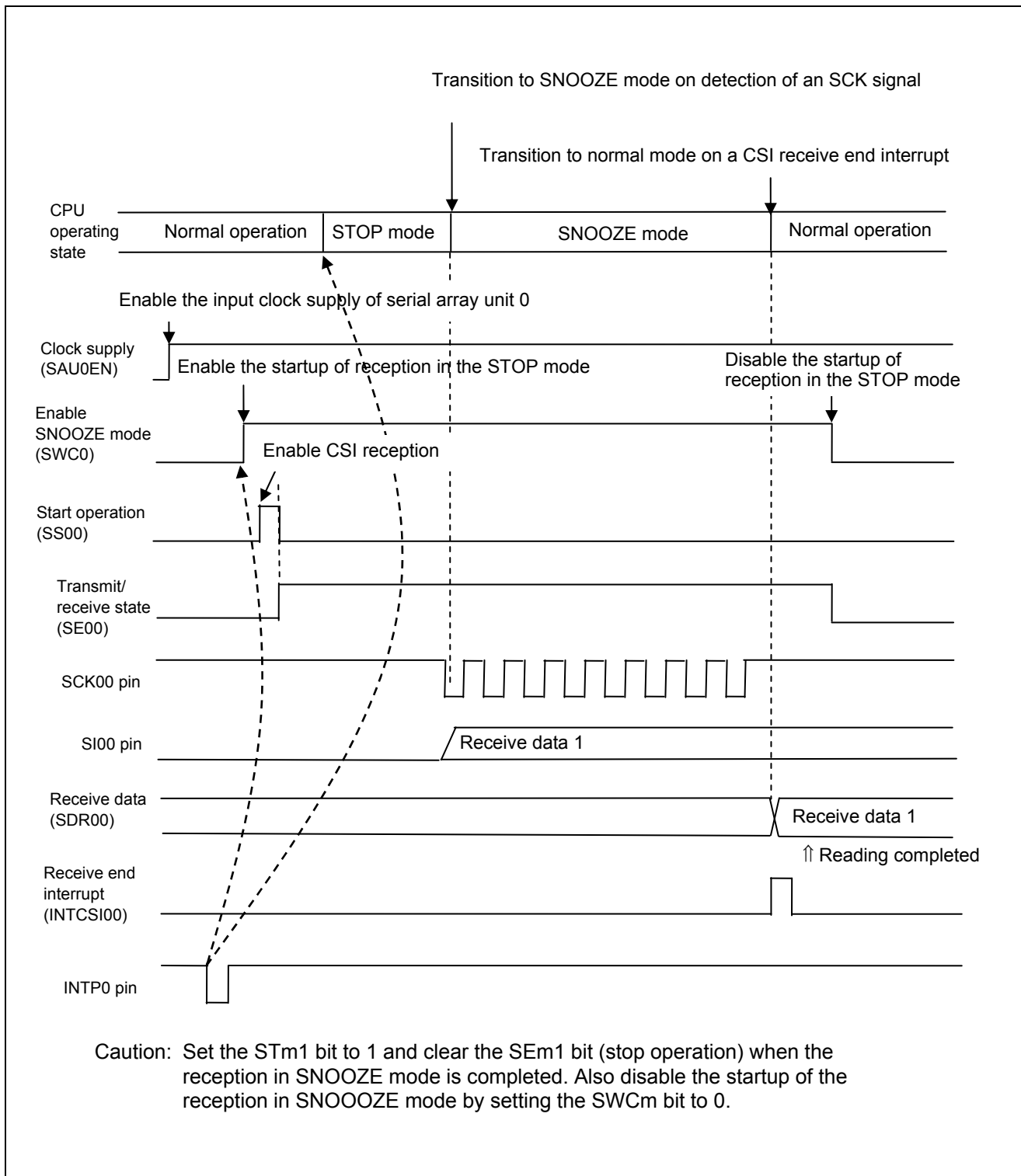


Figure 1.3 Timing Chart of SNOOZE Mode

2. Operation Check Conditions

The sample code described in this application note has been checked under the conditions listed in the table below.

Table 2.1 Operation Check Conditions

Item	Description
Microcontroller used	RL78/G13 (R5F100LEA)
Operating frequency	<ul style="list-style-type: none"> High-speed on-chip oscillator (HOCO) clock: 32 MHz CPU/peripheral hardware module clock: 32 MHz
Operating voltage	5.0V (Operation is possible at 2.9 V to 5.5 V.) LVD operation (V_{LVD}): Reset mode 2.81 V (2.76 V to 2.87 V)
Integrated development environment (CS+)	CS+ V3.01.00 from Renesas Electronics Corp.
C compiler (CS+)	CC-RL V1.01.00 from Renesas Electronics Corp.
Integrated development environment (e ² studio)	e ² studio V4.0.0.26 from Renesas Electronics Corp.
C compiler (e ² studio)	CC-RL V1.01.00 from Renesas Electronics Corp.
Board used	RL78/G13 target board (QB-R5F100LE-TB)

3. Related Application Notes

The application notes that are related to this application note are listed below for reference.

RL78/G13 Initialization (R01AN2575E) Application Note

RL78/G13 Serial Array Unit for 3-Wire Serial I/O (Master Transmission/Reception) (R01AN2547E) Application Note

RL78/G13 Serial Array Unit for 3-Wire Serial I/O (Slave Transmission/Reception) (R01AN2711E) Application Note

4. Description of the Hardware

4.1 Hardware Configuration Example

Figure 4.1 shows an example of hardware configuration that is used for this application note.

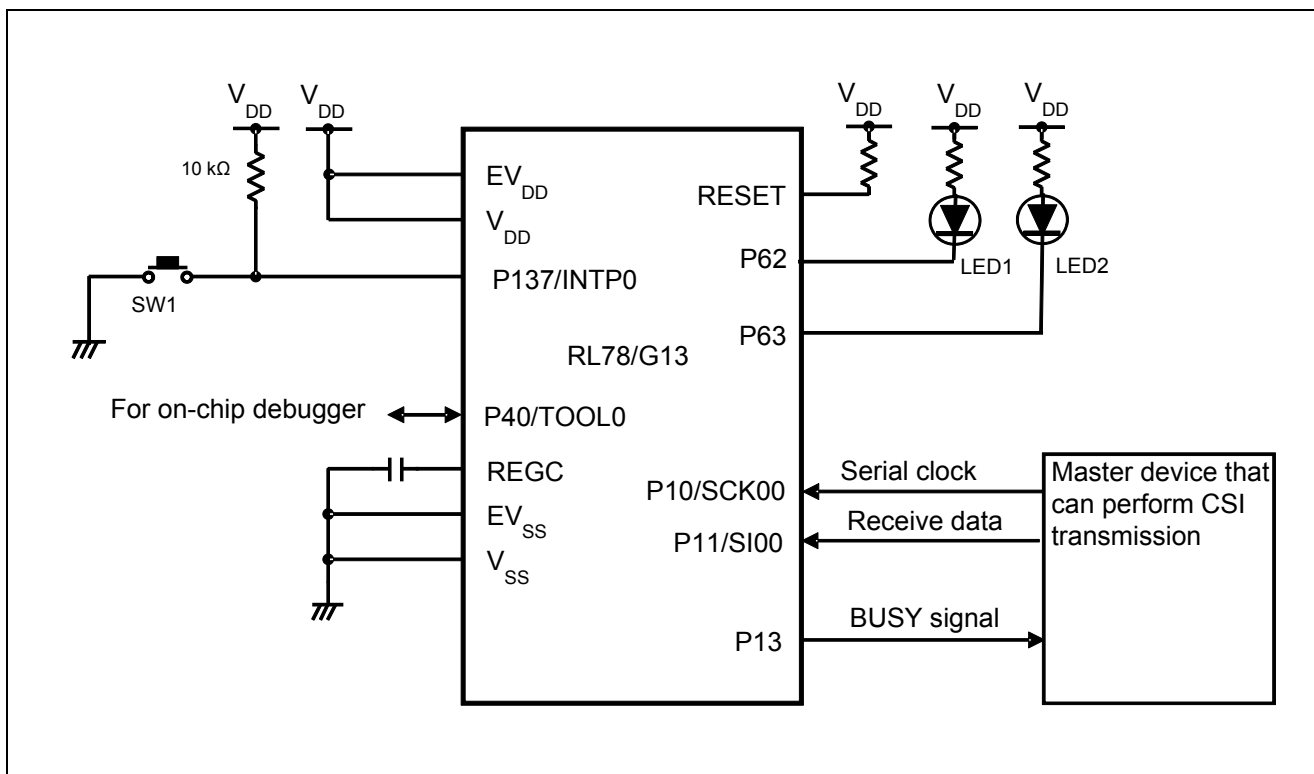


Figure 4.1 Hardware Configuration

- Cautions:
1. The purpose of this circuit is only to provide the connection outline and the circuit is simplified accordingly. When designing and implementing an actual circuit, provide proper pin treatment and make sure that the hardware's electrical specifications are met (connect the input-only ports separately to V_{DD} or V_{SS} via a resistor).
 2. Connect any pins whose name begins with EV_{SS} to V_{SS} and any pins whose name begins with EV_{DD} to V_{DD} , respectively.
 3. V_{DD} must be held at not lower than the reset release voltage (V_{LVD}) that is specified as LVD.

4.2 List of Pins to be Used

Table 4.1 lists the pins to be used and their functions.

Table 4.1 Pins to be Used and their Functions

Pin Name	I/O	Description
P10/SCK00	Input	CSI00 serial clock input pin
P11/SI00	Input	CSI00 serial data receive pin
P13	Output	BUSY signal output pin 0: Ready for communication 1: Not ready for communication
P137/INTP0	Input	Switch input/CSI00 reception start trigger Pressing the switch when LED1 is on causes the CPU to switch into STOP mode and starts CSI slave reception.
P62	Output	LED1 lighting control port Turns on when the CSI is in the switch input wait state in HALT mode.
P63	Output	LED2 lighting control port Turns on when the receive data matches the expected value.

5. Software Description

5.1 Operation Outline

The sample application covered in this application note receives data via a CSI slave in SNOOZE mode, compares the receive data with the predefined data value, and turns on an LED when these data are matched.

The application turns on LED1, switches to HALT mode, and waits for a switch input. When a switch input is detected, the application turns off LED1 and LED2, sets CSI reception and SNOOZE mode, then transitions to the STOP mode.

The CPU is restored to the normal operation mode on a CSI slave receive end interrupt. After being restored into the normal operation mode, the application turns on LED2 if the receive data matches the expected value.

(1) Initialize the SAU0.

<Conditions for setting>

- Use channel 0 of SAU0 as the CSI.
- Set the serial clock to the input clock from the SCK00 pin (slave).
- Use single transfer mode as operation mode.
- Select type 1 as the phase between data and clock signals.
- Set the data transfer order to the MSB first.
- Set the length of data to 8 bits.
- Make sure that a serial transfer end interrupt (INTCSI00) should occur in single transfer mode.
- Set the priority level of the INTCSI00 interrupt to level 0.
- Use the P10/SCK00 pin for clock input.
- Use the P11/SI00 pin for data input.

(2) Setting up I/O ports

<Conditions for setting>

- LED lighting control port (LED1-LED2): Set ports P62 and P63 to output ports.
- CSI00 reception start switch: Set the P137/INTP0 pin for INTP0 interrupts in falling edge detection mode (using an external pull-up resistor).

(3) Take the following actions before switching into HALT mode (waiting for a switch input):

- Turn on LED1.
- Clear the INTP0 interrupt request flag.
- Enable the INTP0 interrupts.

(4) Transition to HALT mode and wait for a switch input.

(5) On detection of a switch input, the application exits the HALT mode and takes the following actions:

- To prevent chattering, take actions (A) through (E) below.
 - A) Using the interrupt handler for INTP0 interrupts, set the RINTE bit of the interval timer control register (ITMC) to 1 to start counting.
 - B) Wait until an interval timer interrupt occurs.
 - C) Check the switch status with the interval timer interrupt handler. That is, check the P137 status.
 - D) If this status is 1, determine that the switch has not been depressed. Then, return to step (4).
 - E) If it is 0, determine that the switch has been depressed. Perform the operations below.

- Disable the INTP0 interrupts.
- Clear the INTP0 interrupt request flag.
- Set the SWC0 bit in the serial standby control register 0 (SSC0) to 1 to enable reception to be started in STOP mode.
- Clear the INTCSI00 interrupt request flag.
- Enable the INTCSI00 interrupts.
- Set the SS00 bit in the serial channel start register 0 (SS0) to 1 to transition to the communication wait state.
- Turn off LED1 and LED2.
- Set the BUSY signal to 0.

(6) Transition to STOP mode and wait for SCK input.

In STOP mode, CSI reception is performed by hardware. When a serial clock is detected (SCK00 pin input), the CPU transitions to SNOOZE mode and starts CSI reception. When the reception ends successfully, the CPU exits the SNOOZE mode and enters the normal operation mode.

(7) After the transition to normal operation mode, the application reads the receive data.

- Set the BUSY signal to 1 after reading the receive data.

(8) Stop the CSI operation and disable transition to SNOOZE mode.

- Set the ST00 bit in the serial channel stop register (ST0) to 1 to stop communication.
- Disable the INTCSI00 interrupts.
- Clear the INTCSI00 interrupt request flag.
- Set the SWC0 bit in the serial standby control register 0 (SSC0) to 0 to disable reception in STOP mode.

(9) Check the receive data and turn on LED2 if it matches the expected value. Subsequently, repeat steps (3) through (9).

Caution: For information about the precautions in using the device, refer to RL78/G13 User's Manual: Hardware.

5.2 File Configuration

Table 5.1 lists the files that are used in this sample code. This table excludes files which are automatically generated by the integrated development environment.

Table 5.1 File Configuration

File name	Overview	Remarks
r_cg_serial_user.c	SAU module CSI00 receive end interrupt	Additional functions: R_CSI00_Get_ReceiveEndFlag R_CSI00_Clear_ReceiveEndFlag
r_cg_it_user.c	Interval timer module Interval timer interrupt	Additional functions: R_IT_Get_INTIT_Flag R_IT_Clear_INTIT_Flag

5.3 List of Option Byte Settings

Table 5.2 summarizes the settings of the option bytes.

Table 5.2 Option Byte Settings

Address	Value	Description
000C0H/010C0H	11101111B	Disables the watchdog timer. (Stops counting after the release from the reset status.)
000C1H/010C1H	01111111B	LVD reset mode, 2.81 V (2.76 V to 2.87 V)
000C2H/010C2H	11101000B	HS mode HOCO: 32 MHz
000C3H/010C3H	10000100B	Enables the on-chip debugger. Erases the data in the flash memory when on-chip debugging security ID authentication fails.

5.4 List of Constants

Table 5.3 lists the constants that are used in this sample program.

Table 5.3 Constants for the Sample Program

Constant	Setting	Description
_0001_SAU_CH0_START_TRG_ON	0x0001	Serial channel enable status register 0 (SE0) value for enabling communication
_0001_SAU_CH0_STOP_TRG_ON	0x0001	Serial channel stop register 0 (ST0) value for stopping communication
_0001_SAU_CH0_SNOOZE_ON	0x0001	Serial standby control register 0 (SSC0) value for enabling reception in STOP mode
LED1_NOMAL	P6_bit.no2	LED1 lighting control port
LED2_RCV_OK	P6_bit.no3	LED2 lighting control port
BUSY_SIGNAL	P1_bit.no3	BUSY signal output port
RECEIVE_OK_DATA	0x5B	Expected value of receive data

5.5 List of Variables

Table 5.4 lists the global variables. Table 5.5 lists the static variables.

Table 5.4 Global Variable

Type	Variable Name	Contents	Function Used
volatile uint16_t	g_csi00_rx_count	Number of CSI data bytes received	R_CSI00_Receive r_csi00_interrupt
volatile uint16_t	g_csi00_rx_length	Number of CSI data bytes to receive	R_CSI00_Receive r_csi00_interrupt
volatile uint8_t*	gp_csi00_rx_address	Address of location for storing the next CSI receive data	R_CSI00_Receive r_csi00_interrupt

Table 5.5 Static Variables

Type	Variable Name	Contents	Function Used
uint8_t	g_ReceiveEndFlag	CSI00 receive end flag	r_csi00_callback_receiveend, R_CSI00_Get_ReceiveEndFlag, R_CSI00_Clear_ReceiveEndFlag
uint8_t	g_sw_status	Switch state	r_it_interrupt, R_IT_Get_Switch_Status, R_IT_Clear_Switch_Status
uint8_t	g_intit_flag	Interval timer interrupt occurrence flag	r_it_interrupt, R_IT_Get_INTIT_Flag, R_IT_Clear_INTIT_Flag

5.6 List of Functions

Table 5.6 lists the functions that are used in this sample program.

Table 5.6 Functions

Function Name	Outline
R_SAU0_Set_SnoozeOn	Enables CSI00 in SNOOZE mode.
R_SAU0_Set_SnoozeOff	Disables CSI00 in SNOOZE mode.
R_CSI00_Start	Starts CSI00 reception.
R_CSI00_Stop	Stops CSI00 reception.
R_CSI00_Receive	Sets up CSI00 receive buffer.
r_csi00_interrupt	Processes CSI00 communication end interrupt.
r_csi00_callback_receiveend	Callback function for CSI00 communication end interrupts
R_CSI00_Get_ReceiveEndFlag	Gets CSI00 receive end flag.
R_CSI00_Clear_ReceiveEndFlag	Clears CSI00 receive end flag.
R_INTC0_Start	Starts INTP0 operation.
R_INTC0_Stop	Stops INTP0 operation.
r_intc0_interrupt	INTP0 interrupt
R_IT_Start	Starts the interval timer.
R_IT_Stop	Stops the interval timer operation.
r_it_interrupt	Interval timer interrupt
R_IT_Get_Switch_Status	Gets switch state.
R_IT_Clear_Switch_Status	Clears switch state.
R_IT_Get_INTIT_Flag	Obtains the interval timer interrupt occurrence flag.
R_IT_Clear_INTIT_Flag	Clears the interval timer interrupt occurrence flag.

5.7 Function Specifications

This section describes the specifications for the functions that are used in this sample program.

[Function Name] R_SAU0_Set_SnoozeOn

Synopsis	Enables CSI00 in SNOOZE mode.
Header	r_cg_macrodriver.h r_cg_serial.h r_cg_userdefine.h
Declaration	void R_SAU0_SnoozeOn(void)
Explanation	Enables operation in SNOOZE mode (SWC0 = 1).
Arguments	None
Return value	None
Remarks	None

[Function Name] R_SAU0_Set_SnoozeOff

Synopsis	Disables CSI00 in SNOOZE mode.
Header	r_cg_macrodriver.h r_cg_serial.h r_cg_userdefine.h
Declaration	void R_SAU0_SnoozeOff(void)
Explanation	Disables operation in SNOOZE mode (SWC0 = 0).
Arguments	None
Return value	None
Remarks	None

[Function Name] R_CSI00_Start

Synopsis	Starts CSI00 reception.
Header	r_cg_macrodriver.h r_cg_serial.h r_cg_userdefine.h
Declaration	void R_CSI00_Start(void)
Explanation	Masks off CSI00 receive interrupts to enable CSI00 reception.
Arguments	None
Return value	None
Remarks	None

[Function Name] R_CSI00_Stop

Synopsis	Stops CSI00 reception.
Header	r_cg_macrodriver.h r_cg_serial.h r_cg_userdefine.h
Declaration	void R_CSI00_Stop(void)
Explanation	Masks on CSI00 receive interrupts to disable CSI00 reception.
Arguments	None
Return value	None
Remarks	None

[Function Name] R_CSI00_Receive

Synopsis	Sets up CSI00 receive buffer.	
Header	r_cg_macrodriver.h r_cg_serial.h r_cg_userdefine.h	
Declaration	MD_STATUS R_CSI00_Receive(uint8_t* const rx_buf, uint16_t rx_num)	
Explanation	Sets up the CSI00 receive buffer address and the number of data bytes to receive. An argument error is returned if the receive data count is set to not more than 1.	
Arguments	rx_buf	Address of receive data buffer
	rx_num	Number of data bytes to receive
Return value	[MD_OK]: Setup completed [MD_ARGERROR]: Argument error	
Remarks	None	

[Function Name] r_csi00_interrupt

Synopsis	Processes CSI00 communication end interrupt.	
Header	r_cg_macrodriver.h r_cg_serial.h r_cg_userdefine.h	
Declaration	static void __near r_csi00_interrupt(void)	
Explanation	Reads the receive data. The function calls the callback function for CSI00 communication end interrupts.	
Arguments	None	
Return value	None	
Remarks	None	

[Function Name] r_csi00_callback_receiveend

Synopsis	Callback function for CSI00 communication end interrupts	
Header	r_cg_macrodriver.h r_cg_serial.h r_cg_userdefine.h	
Declaration	static void r_csi00_callback_receiveend(void)	
Explanation	Sets the CSI00 receive end flag (g_ReceiveEndFlag) to 1.	
Arguments	None	
Return value	None	
Remarks	None	

[Function Name] R_CSI00_Get_ReceiveEndFlag

Synopsis	Gets receive end flag.	
Header	r_cg_macrodriver.h r_cg_serial.h r_cg_userdefine.h	
Declaration	uint8_t R_CSI00_Get_ReceiveEndFlag(void)	
Explanation	Gets the CSI00 receive end flag (g_ReceiveEndFlag).	
Arguments	None	
Return value	<ul style="list-style-type: none"> When reception is not ended: 0x00 When reception is ended: 0x01 	
Remarks	None	

[Function Name] R_CSI00_Clear_ReceiveEndFlag

Synopsis	Clears receive end flag.
Header	r_cg_macrodriver.h r_cg_serial.h r_cg_userdefine.h
Declaration	void R_CSI00_Clear_ReceiveEndFlag(void)
Explanation	Clears the CSI receive end flag (g_ReceiveEndFlag) to 0.
Arguments	None
Return value	None
Remarks	None

[Function Name] R_INTC0_Start

Synopsis	Resets INTP0 interrupt mask.
Header	r_cg_macrodriver.h r_cg_intc.h r_cg_userdefine.h
Declaration	void R_INTC0_Start(void)
Explanation	Masks off INTP0 interrupts.
Arguments	None
Return value	None
Remarks	None

[Function Name] R_INTC0_Stop

Synopsis	Sets INTP0 interrupt mask.
Header	r_cg_macrodriver.h r_cg_intc.h r_cg_userdefine.h
Declaration	void R_INTC0_Stop(void)
Explanation	Masks on INTP0 interrupts.
Arguments	None
Return value	None
Remarks	None

[Function Name] r_intc0_interrupt

Synopsis	Processes INTP0 interrupt.
Header	r_cg_macrodriver.h r_cg_intc.h r_cg_it.h r_cg_userdefine.h
Declaration	static void __near r_intc0_interrupt(void)
Explanation	Starts the interval timer.
Arguments	None
Return value	None
Remarks	None

[Function Name] R_IT_Start

Synopsis	Starts the interval timer.
Header	r_cg_macrodriver.h r_cg_it.h r_cg_userdefine.h
Declaration	void R_IT_Start(void)
Explanation	This function starts the interval timer and masks off interval timer interrupts.
Arguments	None
Return value	None
Remarks	None

[Function Name] R_IT_Stop

Synopsis	Stops the interval timer.
Header	r_cg_macrodriver.h r_cg_it.h r_cg_userdefine.h
Declaration	void R_IT_Stop(void)
Explanation	This function masks on interval timer interrupts and stops the interval timer.
Arguments	None
Return value	None
Remarks	None

[Function Name] r_it_interrupt

Synopsis	Interval timer interrupt
Header	r_cg_macrodriver.h r_cg_it.h r_cg_userdefine.h
Declaration	static void __near r_it_interrupt(void)
Explanation	Sets the switch state (g_sw_status) to 1 if P137 carries a 0. It sets the interval timer interrupt occurrence flag (g_intit_flag) to 1.
Arguments	None
Return value	None
Remarks	None

[Function Name] R_IT_Get_Switch_Status

Synopsis	Gets switch state.
Header	r_cg_macrodriver.h r_cg_it.h r_cg_userdefine.h
Declaration	uint8_t R_IT_Get_Switch_Status (void)
Explanation	Gets the switch state (g_sw_status).
Arguments	None
Return value	<ul style="list-style-type: none"> • When the switch is not pressed: 0x00 • When the switch is pressed: 0x01
Remarks	None

[Function Name] R_IT_Clear_Switch_Status

Synopsis	Clears switch state.
Header	r_cg_macrodriver.h r_cg_it.h r_cg_userdefine.h
Declaration	void R_IT_Clear_Switch_Status(void)
Explanation	Clears the switch state (g_sw_status) to 0.
Arguments	None
Return value	None
Remarks	None

[Function Name] R_IT_Get_INTIT_Flag

Synopsis	Obtains the interval timer interrupt occurrence flag.
Header	r_cg_macrodriver.h r_cg_it.h r_cg_userdefine.h
Declaration	uint8_t R_IT_Get_INTIT_Flag(void)
Explanation	This function obtains the interval timer interrupt occurrence flag (g_intit_flag).
Arguments	None
Return value	<ul style="list-style-type: none"> • When an interval timer interrupt has not occurred: 0x00 • When an interval timer interrupt has occurred: 0x01
Remarks	None

[Function Name] R_IT_Clear_INTIT_Flag

Synopsis	Clears the interval timer interrupt occurrence flag.
Header	r_cg_macrodriver.h r_cg_it.h r_cg_userdefine.h
Declaration	uint8_t R_IT_Clear_INTIT_Flag(void)
Explanation	This function clears the interval timer interrupt occurrence flag. (g_intit_flag) to 0.
Arguments	None
Return value	None
Remarks	None

5.8 Flowcharts

Figure 5.1 shows the overall flow of the sample program described in this application note.

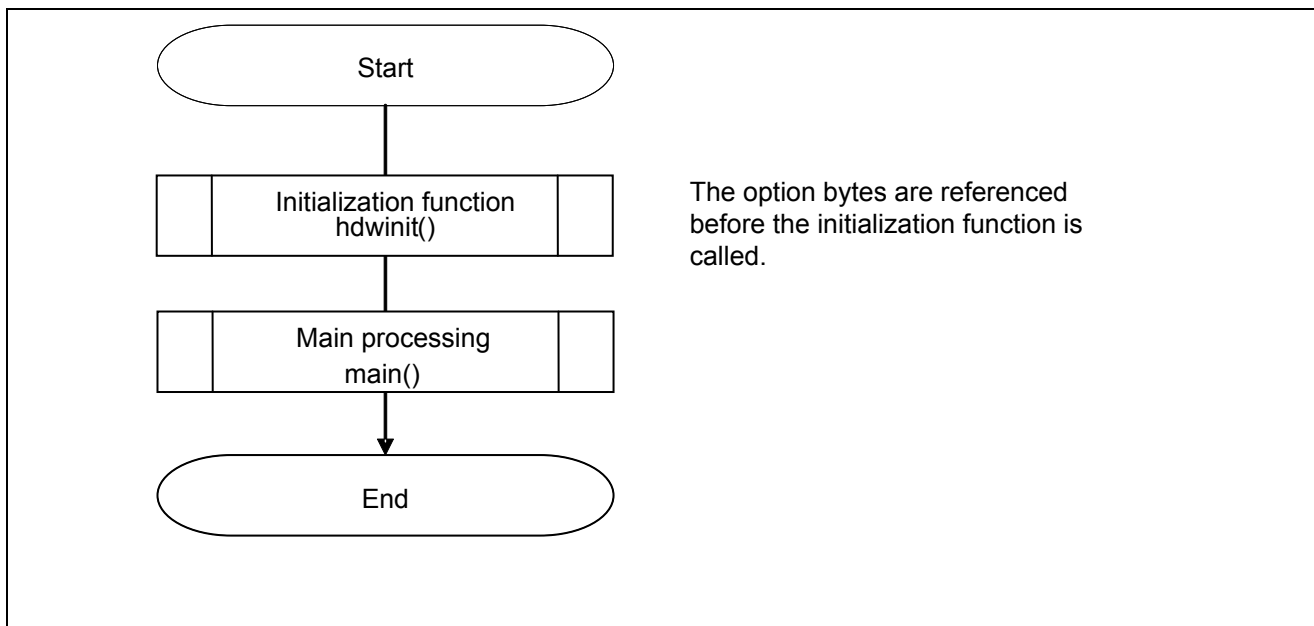


Figure 5.1 Overall Flow

5.8.1 Initialization Function

Figure 5.2 shows the flowchart for the initialization function.

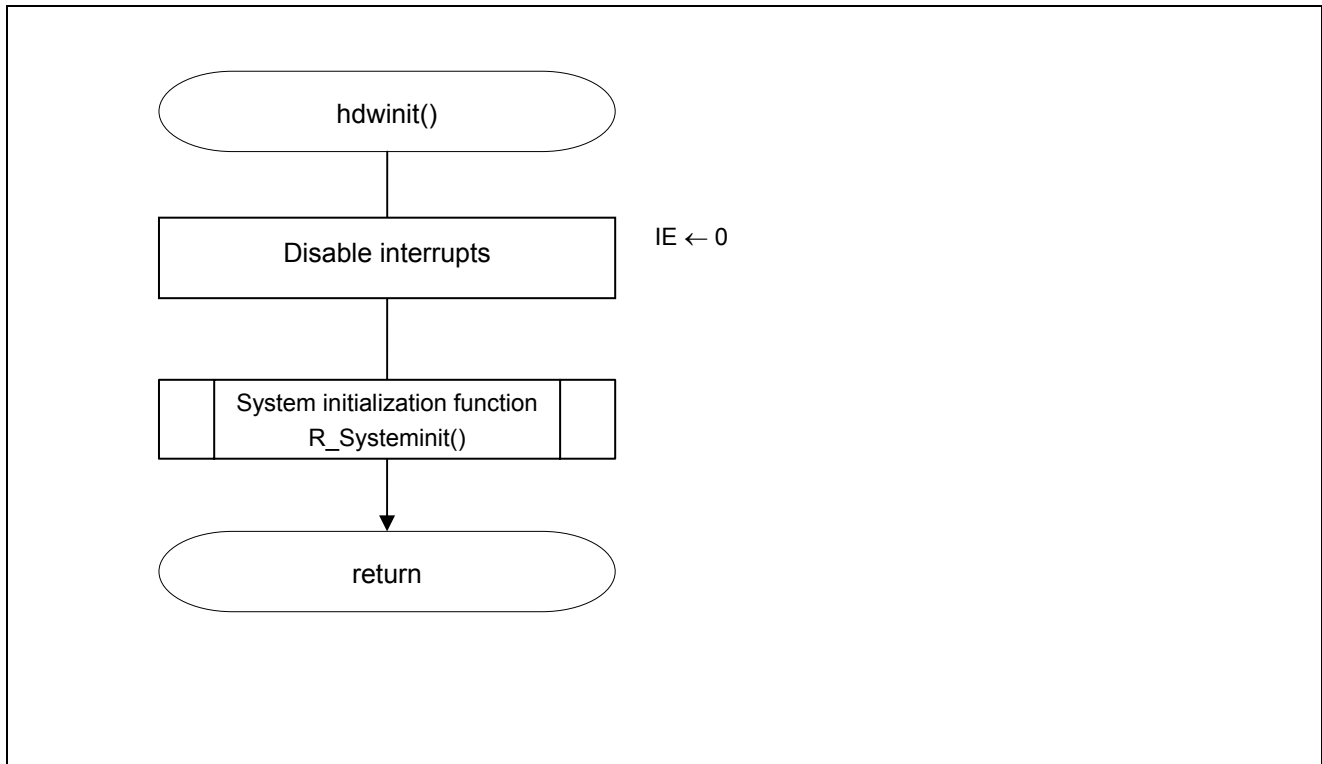


Figure 5.2 Initialization Function

5.8.2 System Initialization function

Figure 5.3 shows the flowchart for the system initialization function.

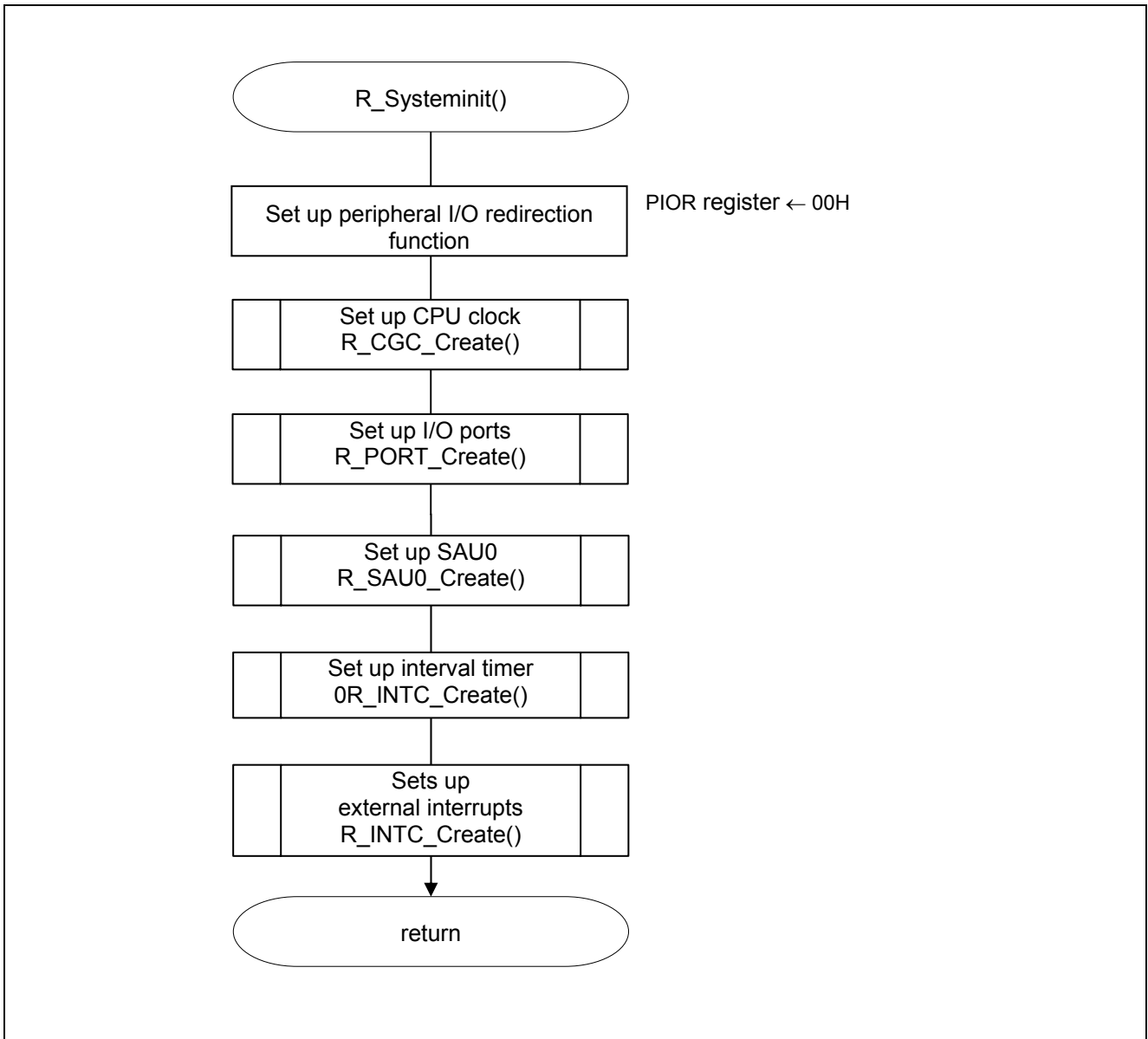


Figure 5.3 System Initialization Function

5.8.3 I/O Port Setup

Figure 5.4 shows the flowchart for I/O port setup.

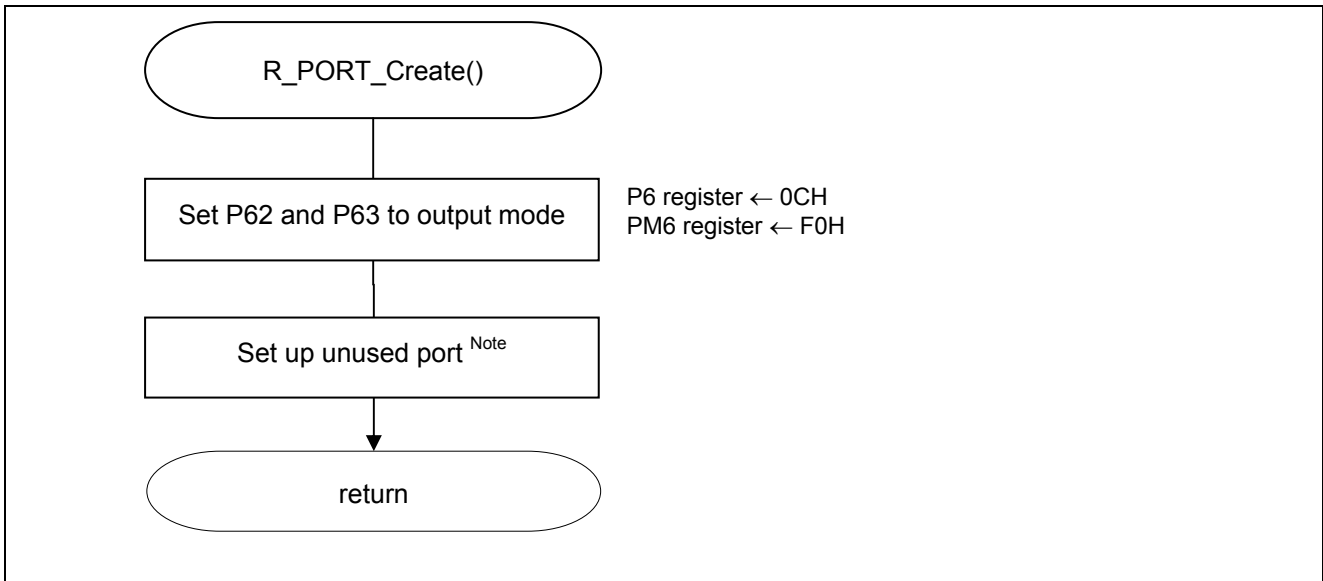


Figure 5.4 I/O Port Setup

Note: Refer to the section entitled "Flowcharts" in RL78/G13 Initialization Application Note (R01AN2575E) for the configuration of the unused ports.

Caution: Provide proper treatment for unused pins so that their electrical specifications are met. Connect each of any unused input-only ports to V_{DD} or V_{SS} via a separate resistor.

Make settings for turning off LEDs

- Port register 0 (P6)
 - Port mode register 6 (PM6)
- Select I/O mode and output latch of LED lighting control port

Symbol: P6

7	6	5	4	3	2	1	0
—	—	—	—	P63	P62	P61	P60
x	x	x	x	1	1	x	x

Bits 3 and 2

P62, P63	P62 and P63 output selection
0	Output low level (LED on)
1	Output high level (LED off)

Symbol: PM6

7	6	5	4	3	2	1	0
—	—	—	—	PM03	PM02	PM01	PM00
x	x	x	x	0	0	x	x

Bits 3 and 2

PM62, PM63	PM62 and PM63 I/O mode selection
0	Output mode (output buffer on)
1	Input mode (output buffer off)

Caution: For details on the register setup procedures, refer to RL78/G13 User's Manual: Hardware.

5.8.4 CPU Clock Setup

Figure 5.5 shows the flowchart for setting up the CPU clock.

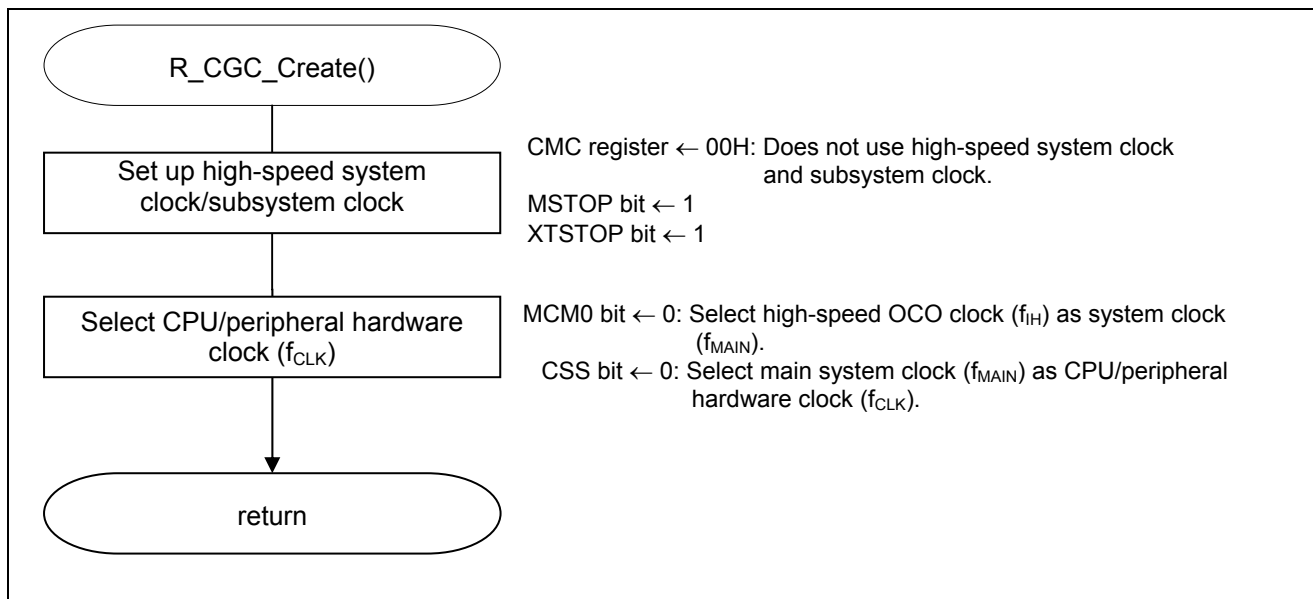


Figure 5.5 CPU Clock Setup

Caution: For details on the procedure for setting up the CPU clock (R_CGC_Create ()), refer to the section entitled "Flowcharts" in RL78/G13 Initialization Application Note (R01AN2575E).

5.8.5 SAU0 Setup

Figure 5.6 shows the flowchart for setting up the SAU0.

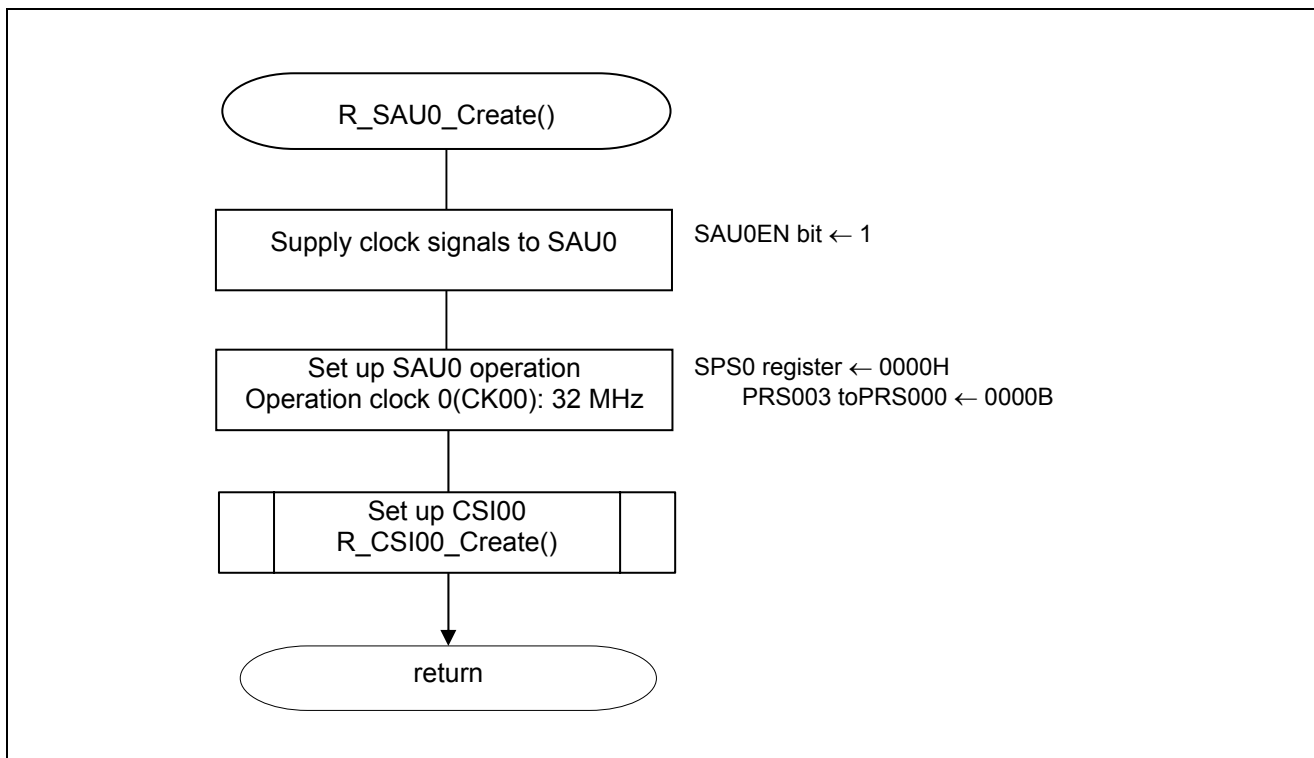


Figure 5.6 SAU0 Setup

Start supplying clock to the Serial Array Unit0

- Peripheral enable register 0 (PER0)
Start supplying clock signals to Serial Array Unit 0.

Symbol: PER0

7	6	5	4	3	2	1	0
RTCEN	IICA1EN	ADCEN	IICA0EN	SAU1EN	SAU0EN	TAU1EN	TAU0EN
x	x	x	x	x	1	x	x

Bit 2

SAU0EN	Control of serial array unit 0 input clock supply
0	Stops supply of input clock.
1	Enables input clock supply.

Caution: For details on the register setup procedures, refer to RL78/G13 User's Manual: Hardware.

Make settings for serial clock

- Serial clock select register (SPS0)
Operation clock (CK00 = 32 MHz).

Symbol: SPS0

15	14	13	12	11	10	9	8	7	6	5	4	3	2	1	0
0	0	0	0	0	0	0	0	PRS 013	PRS 012	PRS 011	PRS 010	PRS 003	PRS 002	PRS 001	PRS 000
0	0	0	0	0	0	0	0	0	0	0	0	0	0	0	0

Bits 3 to 0

PRS003	PRS002	PRS001	PRS000	Selection of operation clock (CK00)					
				f_{CLK}	$f_{CLK} =$ 2 MHz	$f_{CLK} =$ 5 MHz	$f_{CLK} =$ 10 MHz	$f_{CLK} =$ 20 MHz	$f_{CLK} =$ 32 MHz
0	0	0	0	f_{CLK}	2 MHz	5 MHz	10 MHz	20 MHz	32 MHz
0	0	0	1	$f_{CLK}/2$	1 MHz	2.5 MHz	5 MHz	10 MHz	16 MHz
0	0	1	0	$f_{CLK}/22$	500 kHz	1.25 MHz	2.5 MHz	5 MHz	8 MHz
0	0	1	1	$f_{CLK}/23$	250 kHz	625 kHz	1.25 MHz	2.5 MHz	4 MHz
0	1	0	0	$f_{CLK}/24$	125 kHz	313 kHz	625 kHz	1.25 MHz	2 MHz
0	1	0	1	$f_{CLK}/25$	62.5 kHz	156 kHz	313 kHz	625 kHz	1 MHz
0	1	1	0	$f_{CLK}/26$	31.3 kHz	78.1 kHz	156 kHz	313 kHz	500 kHz
0	1	1	1	$f_{CLK}/27$	15.6 kHz	39.1 kHz	78.1 kHz	156 kHz	250 kHz
1	0	0	0	$f_{CLK}/28$	7.81 kHz	19.5 kHz	39.1 kHz	78.1 kHz	125 kHz
1	0	0	1	$f_{CLK}/29$	3.91 kHz	9.77 kHz	19.5 kHz	39.1 kHz	62.5 kHz
1	0	1	0	$f_{CLK}/210$	1.95 kHz	4.88 kHz	9.77 kHz	19.5 kHz	31.3 kHz
1	0	1	1	$f_{CLK}/211$	977 Hz	2.44 kHz	4.88 kHz	9.77 kHz	15.6 kHz
1	1	0	0	$f_{CLK}/212$	488 Hz	1.22 kHz	2.44 kHz	4.88 kHz	7.81 kHz
1	1	0	1	$f_{CLK}/213$	244 Hz	610 Hz	1.22 kHz	2.44 kHz	3.91 kHz
1	1	1	0	$f_{CLK}/214$	122 Hz	305 Hz	610 Hz	1.22 kHz	1.95 kHz
1	1	1	1	$f_{CLK}/215$	61 Hz	153 Hz	305 Hz	610 Hz	977 Hz

Caution: For details on the register setup procedures, refer to RL78/G13 User's Manual: Hardware.

5.8.6 CSI00 Initialization

Figure 5.7 shows the flowchart for initializing the CSI00.

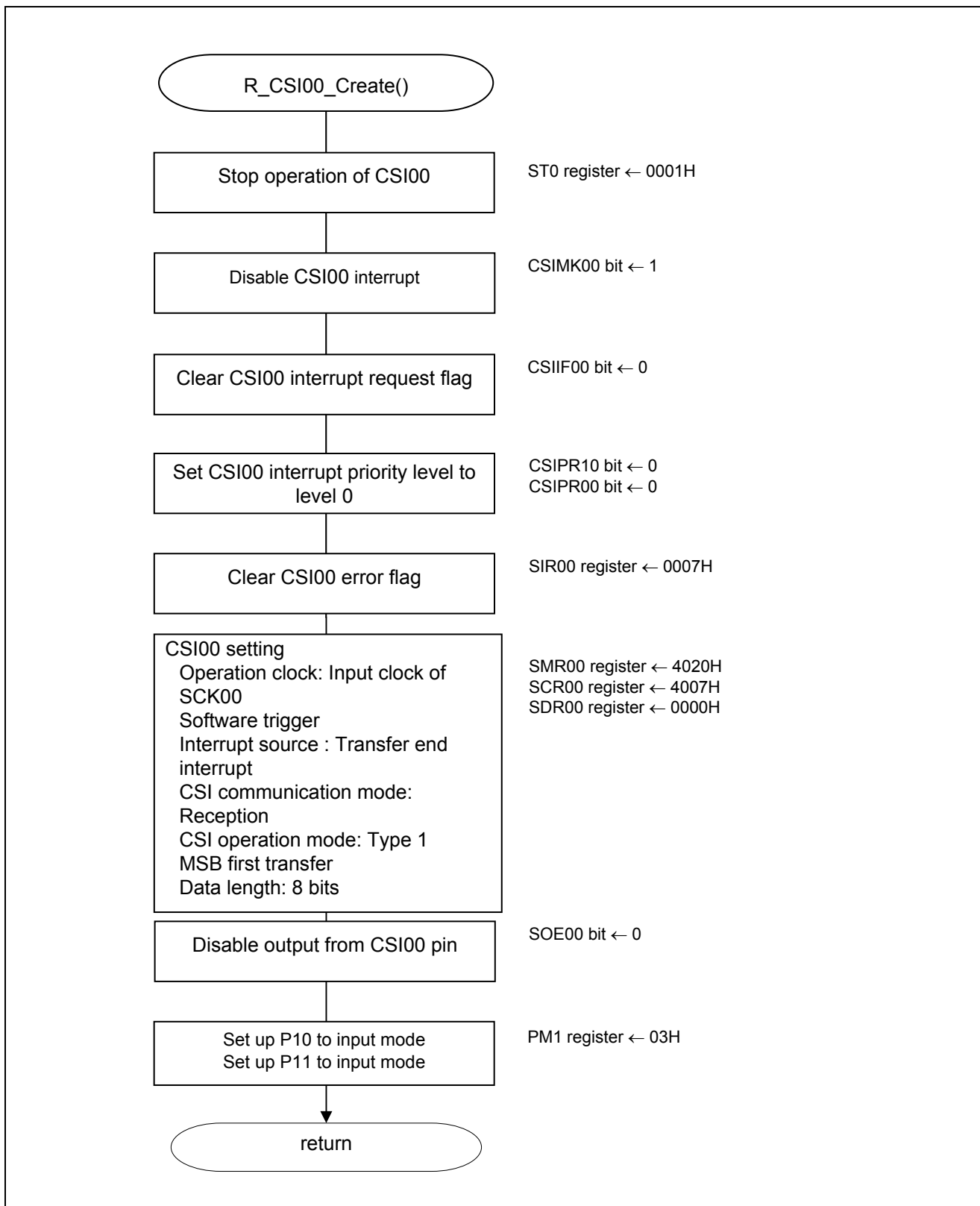


Figure 5.7 CSI00 Initialization

Deactivating serial channel 0

- Serial channel stop register 0 (ST0)
Stop serial channel 0 communication operation.

Symbol: ST0

15	14	13	12	11	10	9	8	7	6	5	4	3	2	1	0
0	0	0	0	0	0	0	0	0	0	0	0	ST03	ST02	ST01	ST00
0	0	0	0	0	0	0	0	0	0	0	0	0	0	0	1

Bits 3 to 0

ST00	Operation stop trigger of channel
0	Disables triggering.
1	Clears SE00 bit to 0 to stop communication.

Caution: For details on the register setup procedures, refer to RL78/G13 User's Manual: Hardware.

Setting up operation mode

- Serial mode register 00 (SMR00)

Operation clock (f_{MCK}): Operation clock CK00 designated by SPS0 register

Transfer clock (f_{TCLK}): Clock input f_{SCK} from SCK00 pin(slave transfer in CSI mode)

Operation mode: Select CSI.

Interrupt source: Select transfer end interrupt.

Symbol: SMR00

15	14	13	12	11	10	9	8	7	6	5	4	3	2	1	0
CKS00	CCS00	0	0	0	0	0	0	0	0	1	0	0	MD002	MD001	MD000
0	1	0	0	0	0	0	0	0	0	1	0	0	0	0	0

Bit 15

CKS00	Selection of operation clock (f_{MCK}) of channel 0
0	Operation clock CK00 set by the SPS0 register
1	Operation clock CK01 set by SPS0 register

Bit 14

CCS00	Selection of transfer clock (f_{TCLK}) of channel 0
0	Frequency-divided clock of operation clock f_{MCK} designated by CKS00 bit
1	Clock input f_{SCK} from SCK00 pin(slave transfer in CSI mode)

Bits 2 and 1

MD002	MD001	Setting of operation mode of channel 0
0	0	CSI mode
0	1	UART mode
1	0	Simplified I ² C mode
1	1	Setting prohibited

Bit 0

MD000	Selection of interrupt source of channel 0
0	Transfer end interrupt
1	Buffer empty interrupt (Occurs when data is transferred from the SDR00 register to the shift register.)

Caution: For details on the register setup procedures, refer to RL78/G13 User's Manual: Hardware.

Setting up communication format

- Serial communication operation setting register 00 (SCR00)
- Operation mode: Reception only
- CSI mode data clock and phase select: Type 1
- Data transfer sequence: MSB first
- Data length: 8 bits

Symbol: SCR00

15	14	13	12	11	10	9	8	7	6	5	4	3	2	1	0
TXE 00	RXE 00	DAP 00	CKP 00	0	EOC 00	PTC 001	PTC 000	DIR00	0	SLC 001	SLC 000	0	1	DLS 001	DLS 000
0	1	0	0	0	0	0	0	0	0	0	0	0	1	1	1

Bits 15 and 14

TXE00	RXE00	Setting of operation mode of channel 0
0	0	Disable communication.
0	1	Reception only
1	0	Transmission only
1	1	Transmission/reception

Bits 13 and 12

DAP00	CKP00	Selection of data and clock phase in CSI mode
0	0	Type 1
0	1	Type 2
1	0	Type 3
1	1	Type 4

Set DAP00 and CKP00 to 0 in the UART or simplified I2C mode.

Bit 10

EOC00	Selection of masking of error interrupt signal (INTSRE0)
0	Masks error interrupt INTSRE0 (INTSR0 is not masked).
1	Enables generation of error interrupt INTSRE0 (INTSR0 is masked if an error occurs).

Set EOC00 to 1 during UART reception.

Caution: For details on the register setup procedures, refer to RL78/G13 User's Manual: Hardware.

Bits 9 and 8

PTC001	PTC000	Setting of parity bit in UART mode	
		Transmission	Reception
0	0	Does not output the parity bit.	Receives without parity.
0	1	Outputs 0 parity.	No parity judgement
1	0	Outputs even parity.	Judged as even parity.
1	1	Outputs odd parity.	Judged as odd parity.

Bit 7

DIR00	Selection of data transfer sequence in CSI and UART modes
0	Inputs/outputs data with MSB first.
1	Inputs/outputs data with LSB first.

Bits 5 and 4

SLC001	SLC000	Setting of stop bit in UART mode
0	0	No stop bit
0	1	Stop bit length = 1 bit
1	0	Setting prohibited
1	1	Setting prohibited

Set 1 bit (SLC001 = 0, SLC000 = 1) during UART reception mode and in the simplified I²C mode.

Bits 1 and 0

DLS001	DLS000	Setting of data length in CSI and UART modes
0	1	9-bit data length (stored in bits 0 to 8 of the SDR01 register) (Selectable only in UART mode)
1	0	7-bit data length (stored in bits 0 to 6 of the SDR01 register)
1	1	8-bit data length (stored in bits 0 to 7 of the SDR01 register)
Others		Setting prohibited

Caution: For details on the register setup procedures, refer to RL78/G13 User's Manual: Hardware.

- Serial data register 00 (SDR00)
Bits 15 to 9 must be set to 0 for slave receive mode.

Symbol: SDR00

15	14	13	12	11	10	9	8	7	6	5	4	3	2	1	0
0	0	0	0	0	0	0	0	0	0	0	0	0	0	0	0

Bits 15 to 9

SDR00[15:9]							Setting of transfer clock based on frequency division ratio of operation clock (f_{MCK})
0	0	0	0	0	0	0	$f_{MCK}/2$
0	0	0	0	0	0	1	$f_{MCK}/4$
0	0	0	0	0	1	0	$f_{MCK}/6$
0	0	0	0	0	1	1	$f_{MCK}/8$
•	•	•	•	•	•	•	•
•	•	•	•	•	•	•	•
•	•	•	•	•	•	•	•
1	1	1	1	1	1	0	$f_{MCK}/254$
1	1	1	1	1	1	1	$f_{MCK}/256$

For slave mode reception, set all of the transfer clock bits 15 to 9 in SDR00 to 0.

Bits 8 to 0

Bits 8 to 0 serve as a transmit/receive buffer register.

Caution: For details on the register setup procedures, refer to RL78/G13 User's Manual: Hardware.

Enabling/disabling data output through target channel

- Serial output enable register 0 (SOE0)
Disable output.

Symbol: SOE0

15	14	13	12	11	10	9	8	7	6	5	4	3	2	1	0
0	0	0	0	0	0	0	0	0	0	0	0	SOE 03	SOE 02	SOE 01	SOE 00
0	0	0	0	0	0	0	0	0	0	0	0	x	x	x	0

Bit 0

SOE00	Serial output enable/stop of channel 0
0	Stops output by serial communication operation.
1	Enables output by serial communication operation.

Caution: For details on the register setup procedures, refer to RL78/G13 User's Manual: Hardware.

CSI SI00 and SCK00 pin settings

- Port mode register 1 (PM1)
Select I/O mode of SI00 and SCK00 pins.

Symbol: PM1

7	6	5	4	3	2	1	0
PM17	PM16	PM15	PM14	PM13	PM12	PM11	PM10
x	x	x	x	x	x	1	1

Bits 1 and 0

PM11, PM10	PM11 and PM10 I/O mode selection
0	Output mode (output buffer on)
1	Input mode (output buffer off)

Caution: For details on the register setup procedures, refer to RL78/G13 User's Manual: Hardware.

5.8.7 Interval Timer Setup

Figure 5.8 shows the flowchart for setting up the interval timer.

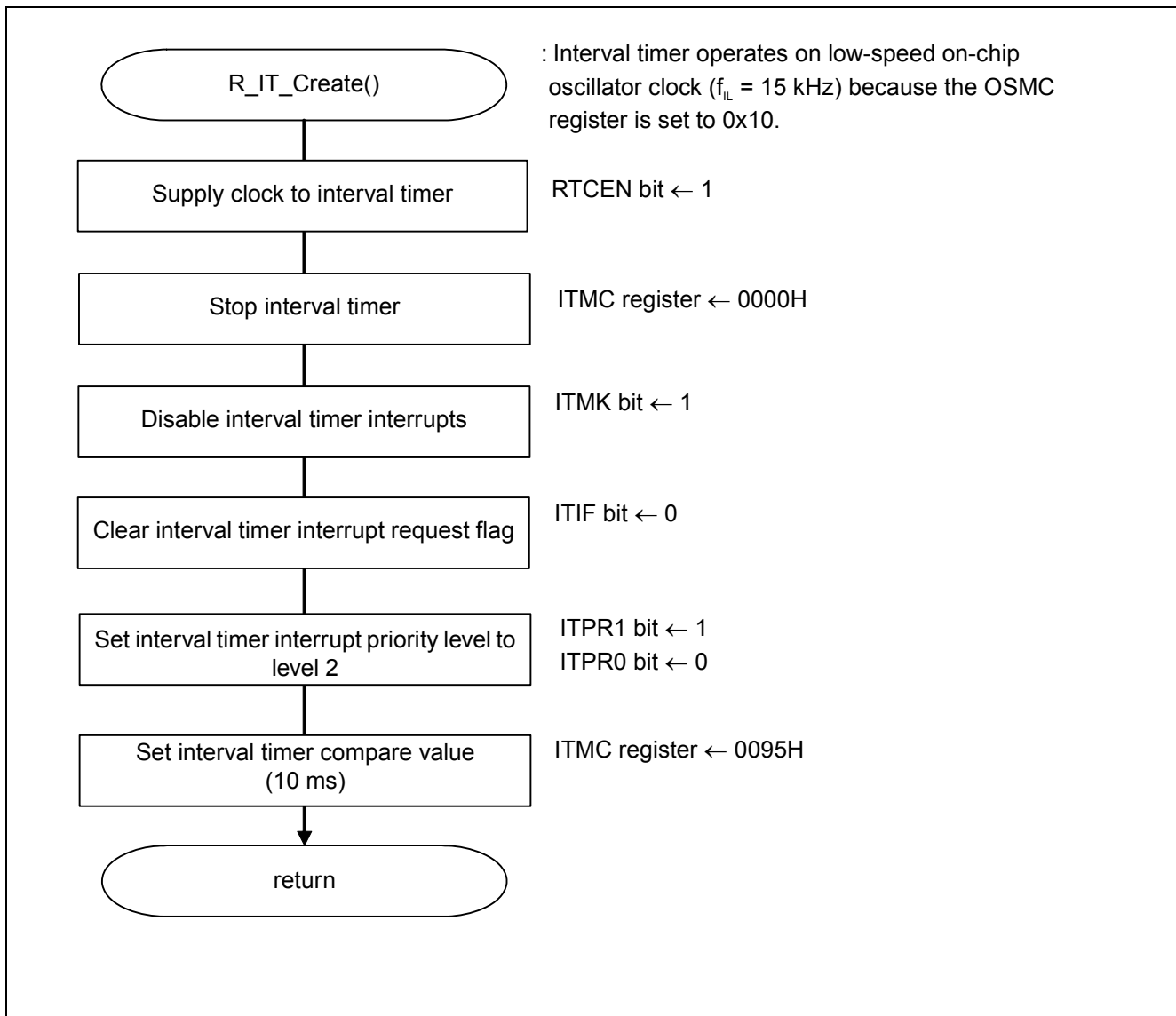


Figure 5.8 Interval Timer Setup

5.8.8 External Interrupt Input Setup

Figure 5.9 shows the flowchart for setting up the external interrupt input.

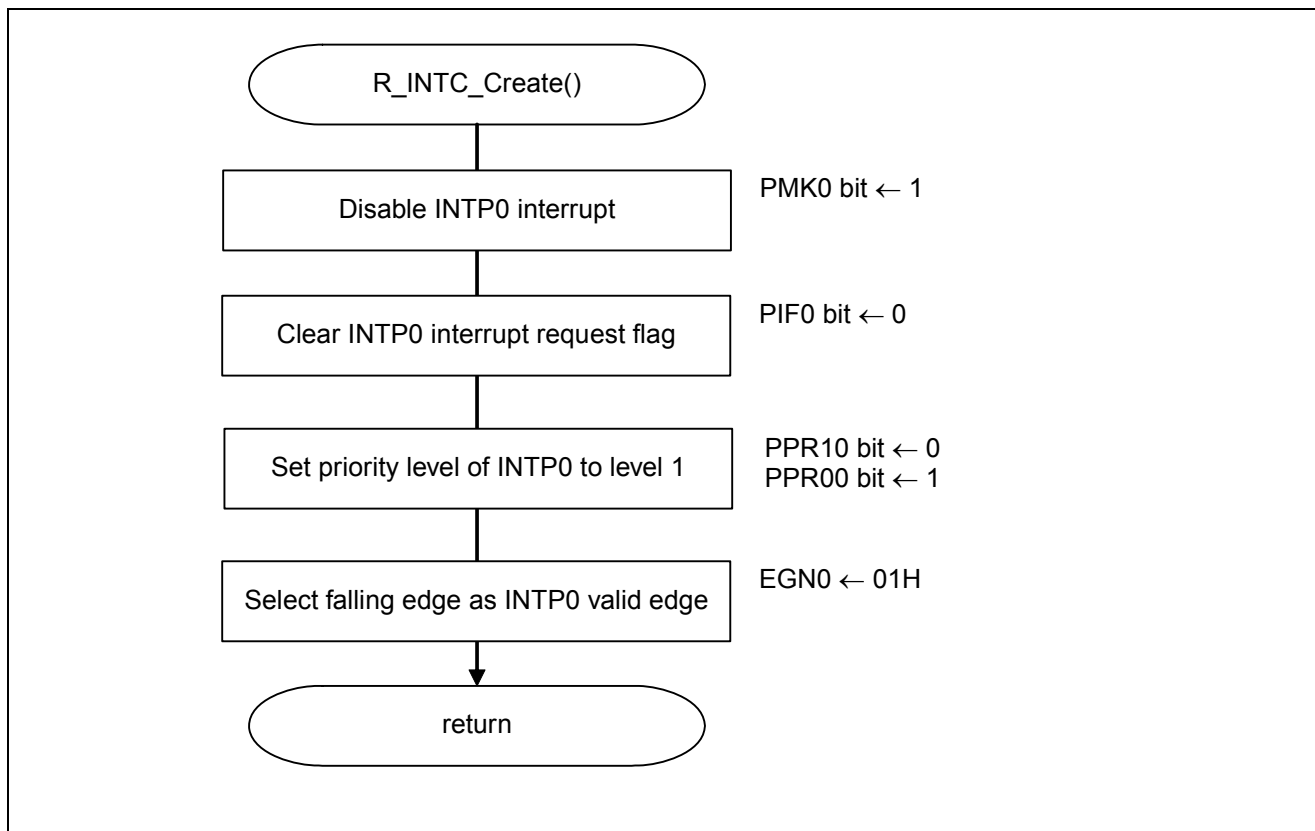


Figure 5.9 External Interrupt Input Setup

5.8.9 Main Processing

Figure 5.10 shows the flowcharts for the main processing (1/2).

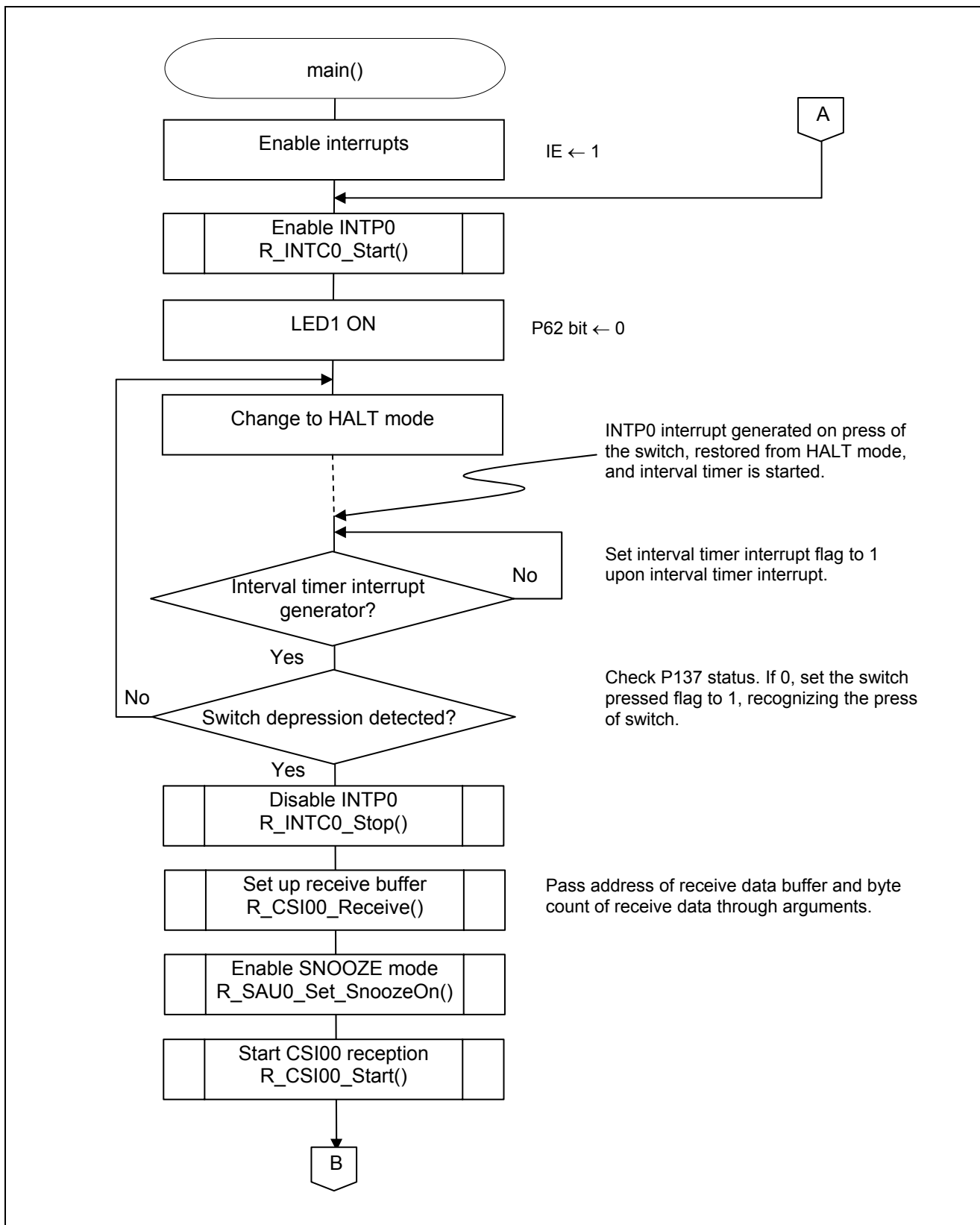


Figure 5.10 Main Processing (1/2)

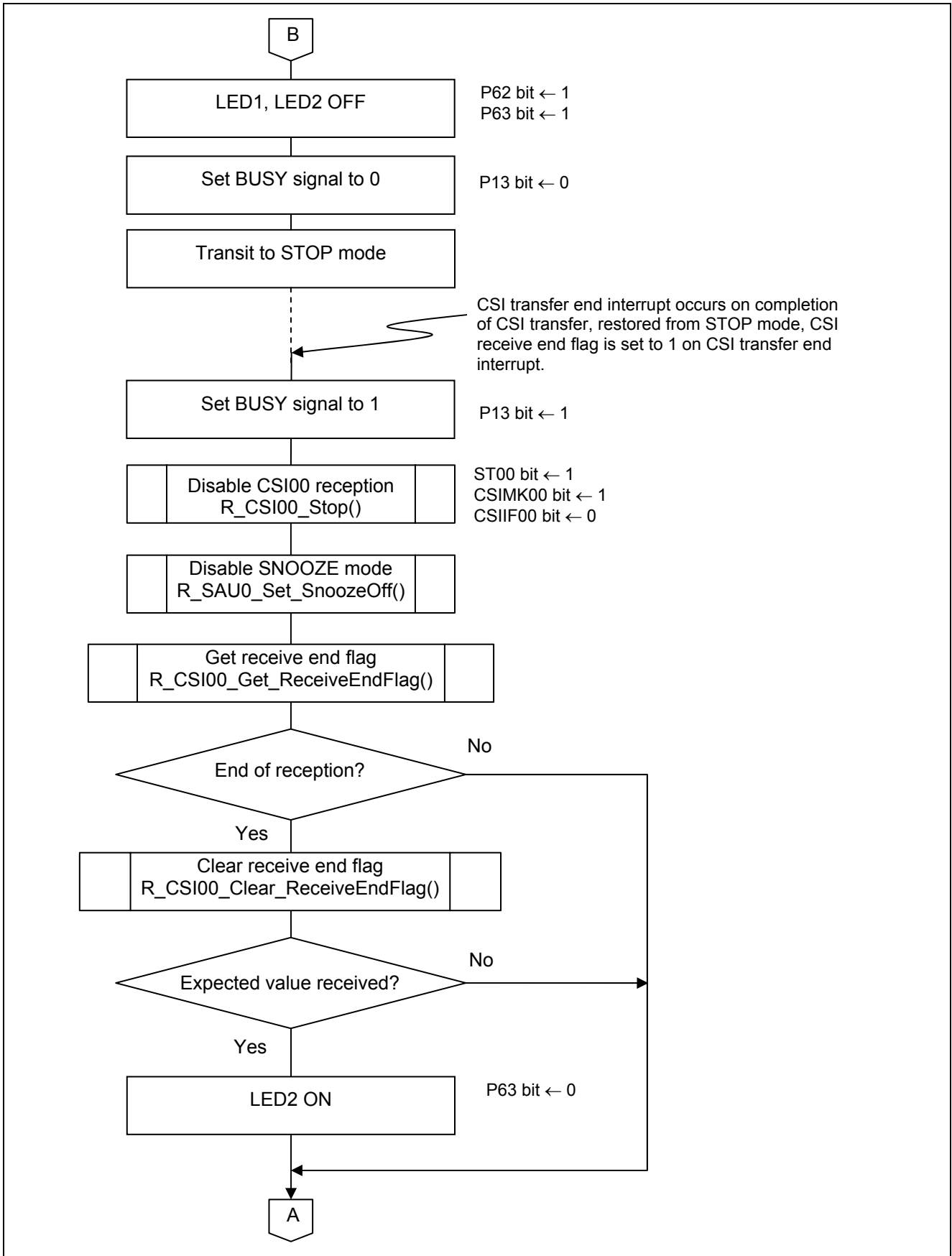


Figure 5.11 Main Processing (2/2)

5.8.10 Enabling the CSI00 in SNOOZE Mode

Figure 5.12 shows the flowchart for enabling the CSI00 in SNOOZE mode.

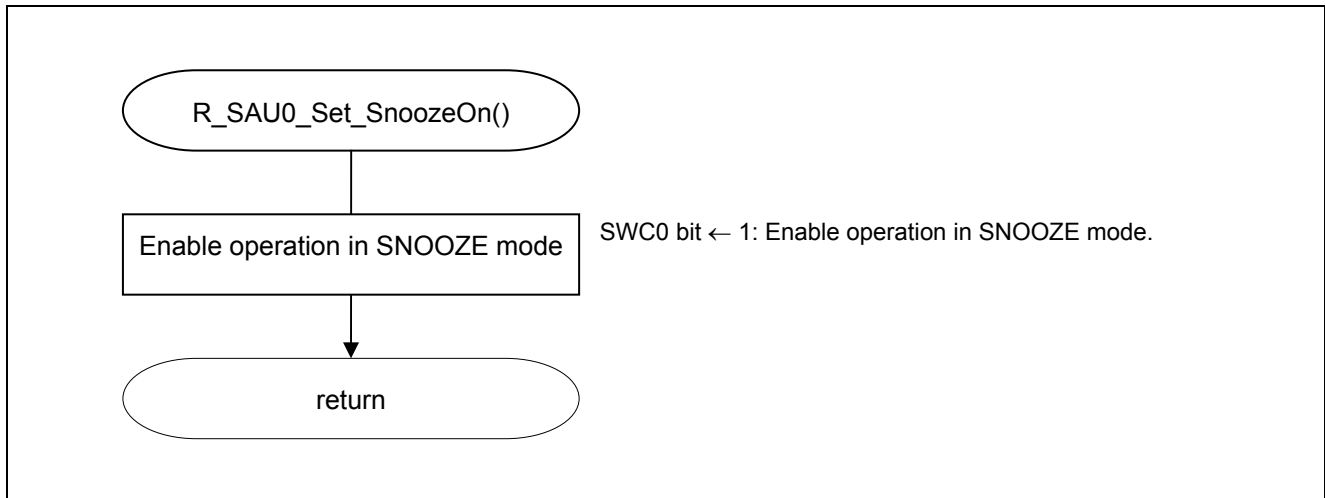


Figure 5.12 Enabling CSI00 in SNOOZE Mode

Controlling the SNOOZE mode

- Serial standby control register 0 (SSC0)
Disable error interrupts (INTSRE0/INTSRE2).
Enable starting reception in STOP mode.

Symbol: SSC0

15	14	13	12	11	10	9	8	7	6	5	4	3	2	1	0
0	0	0	0	0	0	0	0	0	0	0	0	0	0	SSEC 0	SWC0
0	0	0	0	0	0	0	0	0	0	0	0	0	0	0	1

Bit 1

SSEC0	Selection of whether to enable or stop the generation of transfer end interrupts
0	<p>Enable the generation of error interrupts (INTSRE0/INTSRE2).</p> <p>In the following cases, the clock request signal (an internal signal) to the clock generator is also cleared:</p> <ul style="list-style-type: none"> When the SWC0 bit is cleared to 0 When the UART reception start bit is mistakenly detected
1	<p>Stop the generation of error interrupts (INTSRE0/INTSRE2).</p> <p>In the following cases, the clock request signal (an internal signal) to the clock generator is also cleared:</p> <ul style="list-style-type: none"> When the SWC0 bit is cleared to 0 When the UART reception start bit is mistakenly detected When the transfer end interrupt generation timing is based on a parity error or framing error

Bit 0

SWC0	Selection of whether to enable or stop the startup of CSI00 or UART0 reception while in the STOP mode
0	Stop the startup of reception while in the STOP mode.
1	<p>Enable the startup of reception while in the STOP mode.</p> <p>(During asynchronous CSI00/CSI20 reception or UART0/UART2 reception, the baud rate adjustment function is enabled.)</p>

Caution: For details on the register setup procedures, refer to RL78/G13 User's Manual: Hardware.

5.8.11 Disabling the CSI00 in SNOOZE Mode

Figure 5.13 shows the flowchart for disabling the CSI00 in SNOOZE mode.

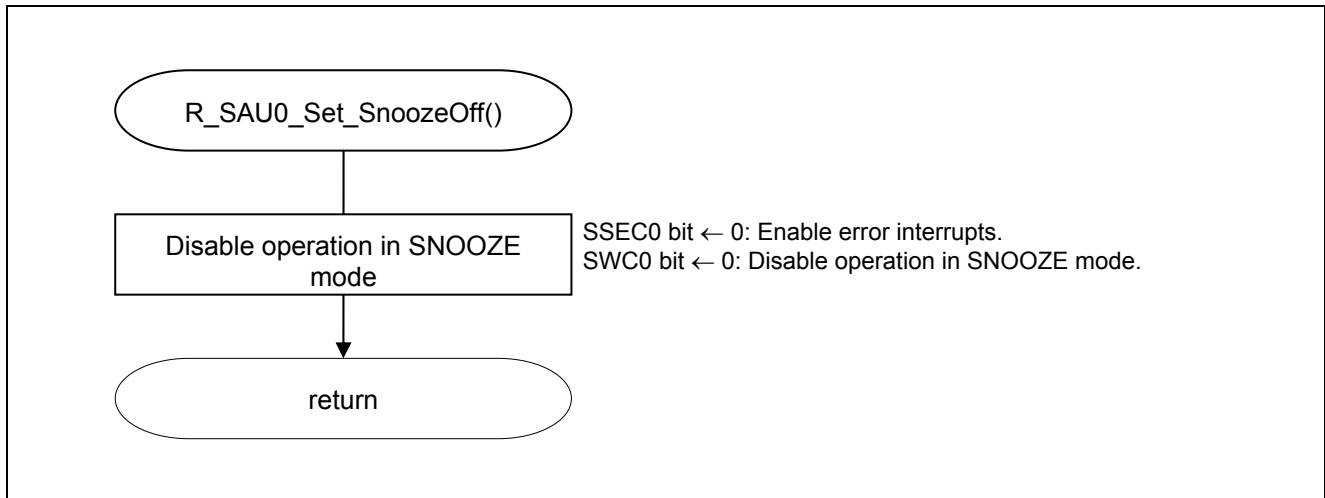


Figure 5.13 Disabling the CSI00 in SNOOZE Mode

5.8.12 Starting CSI00 Reception

Figure 5.14 shows the flowchart for starting CSI00 reception.

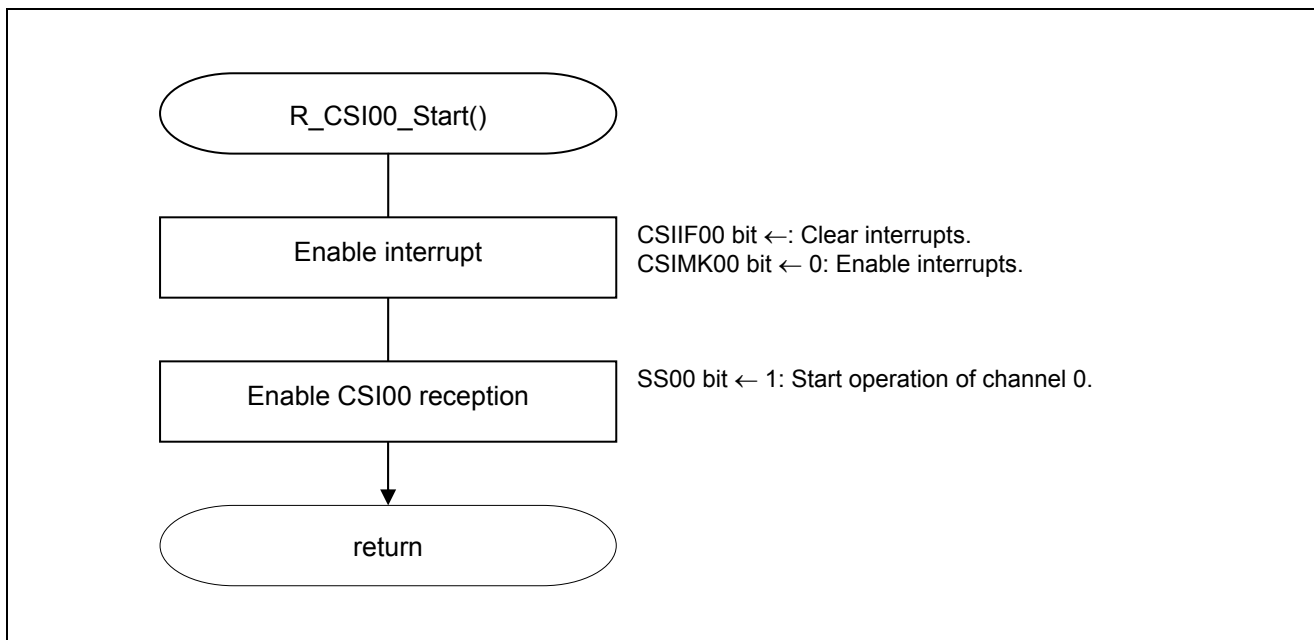


Figure 5.14 Starting CSI00 Reception

Making settings for awaiting the startup of CSI00 reception operation

- Serial channel start register 0 (SS0)
 Switch channel 0 to communication wait state.

Symbol: SS0

15	14	13	12	11	10	9	8	7	6	5	4	3	2	1	0
0	0	0	0	0	0	0	0	0	0	0	0	SS03	SS02	SS01	SS00
0	0	0	0	0	0	0	0	0	0	0	0	0	0	0	1

Bit 0

SS00	Operation start trigger of channel 0
0	No trigger operation
1	Sets the SE00 bit to 1 and enters the communication wait status.

Caution: For details on the register setup procedures, refer to RL78/G13 User's Manual: Hardware.

5.8.13 Stopping CSI00 Reception

Figure 5.15 shows the flowchart for stopping CSI00 reception.

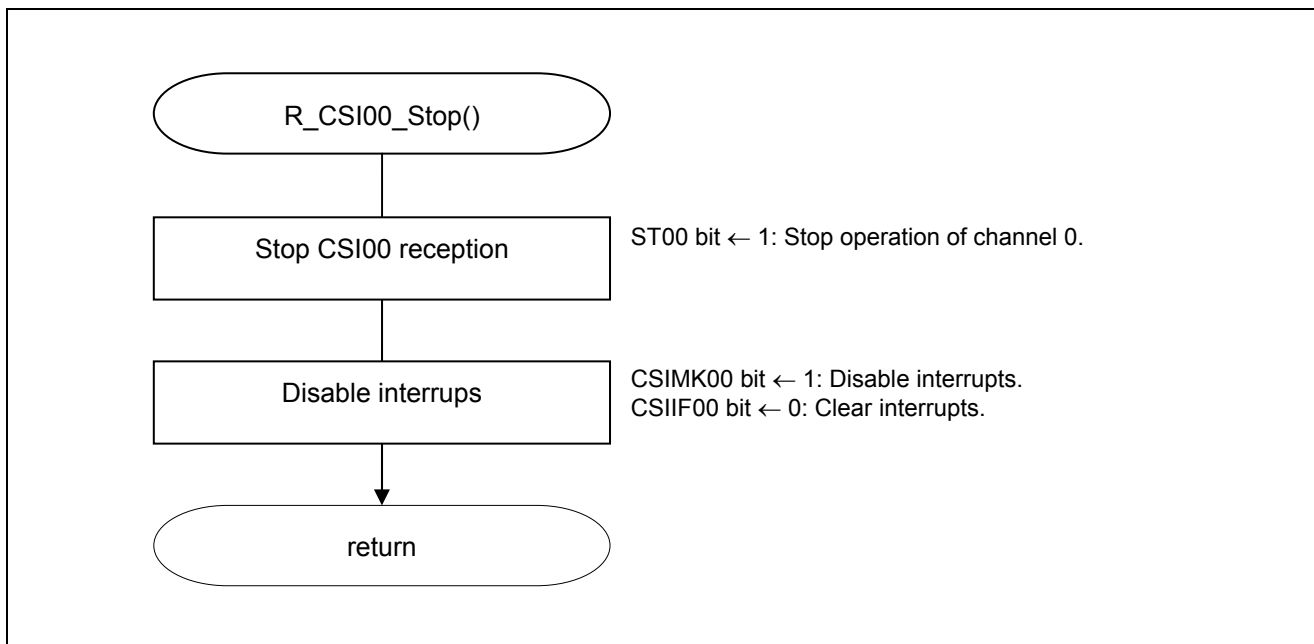


Figure 5.15 Stopping CSI00 Reception

Making settings for stopping CSI00 reception operation.

- Serial channel stop register 0 (ST0)
Enable stopping channel 0 communication.

Symbol: ST0

15	14	13	12	11	10	9	8	7	6	5	4	3	2	1	0
0	0	0	0	0	0	0	0	0	0	0	0	ST03	ST02	ST01	ST00
0	0	0	0	0	0	0	0	0	0	0	0	0	0	0	1

Bit 0

ST00	Operation stop trigger of channel 0
0	No trigger operation
1	Clears SE00 bit to 0 and stops communication ^{Note.}

Note: Communication stops while holding the value of the control register and shift register, and the status of the serial clock I/O pin, serial data output pin, and the error flags (FEFmn: framing error flag, PEFmn: parity error flag, and OVFmn: overrun error flag).

Caution: For details on the register setup procedures, refer to RL78/G13 User's Manual: Hardware.

5.8.14 Setting up the CSI00 Receive Buffer

Figure 5.16 shows the flowchart for setting up the CSI00 receive buffer.

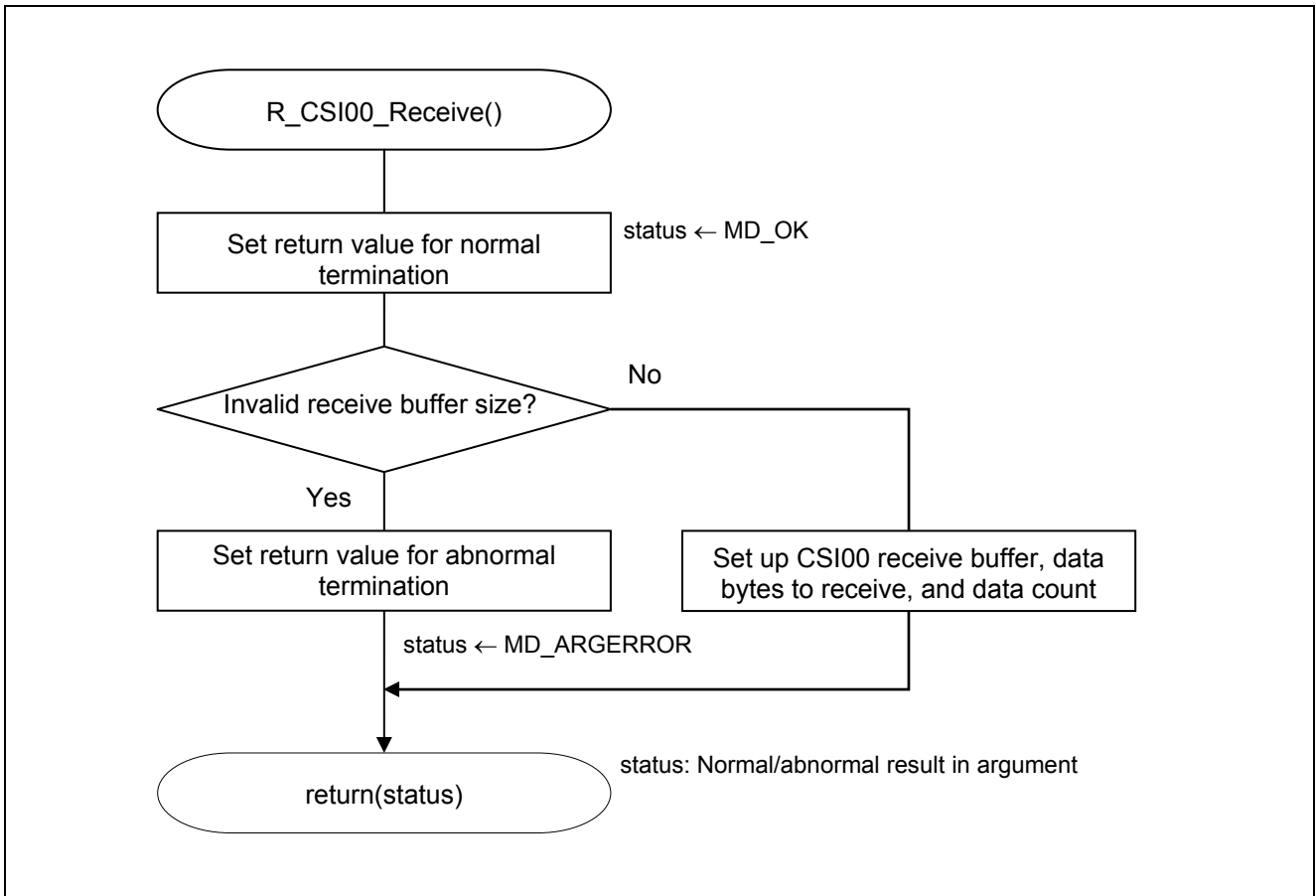


Figure 5.16 Setting up the CSI00 Receive Buffer

5.8.15 CSI00 Communication End Interrupts

Figure 5.17 shows the flowchart for CSI00 communication end interrupts.

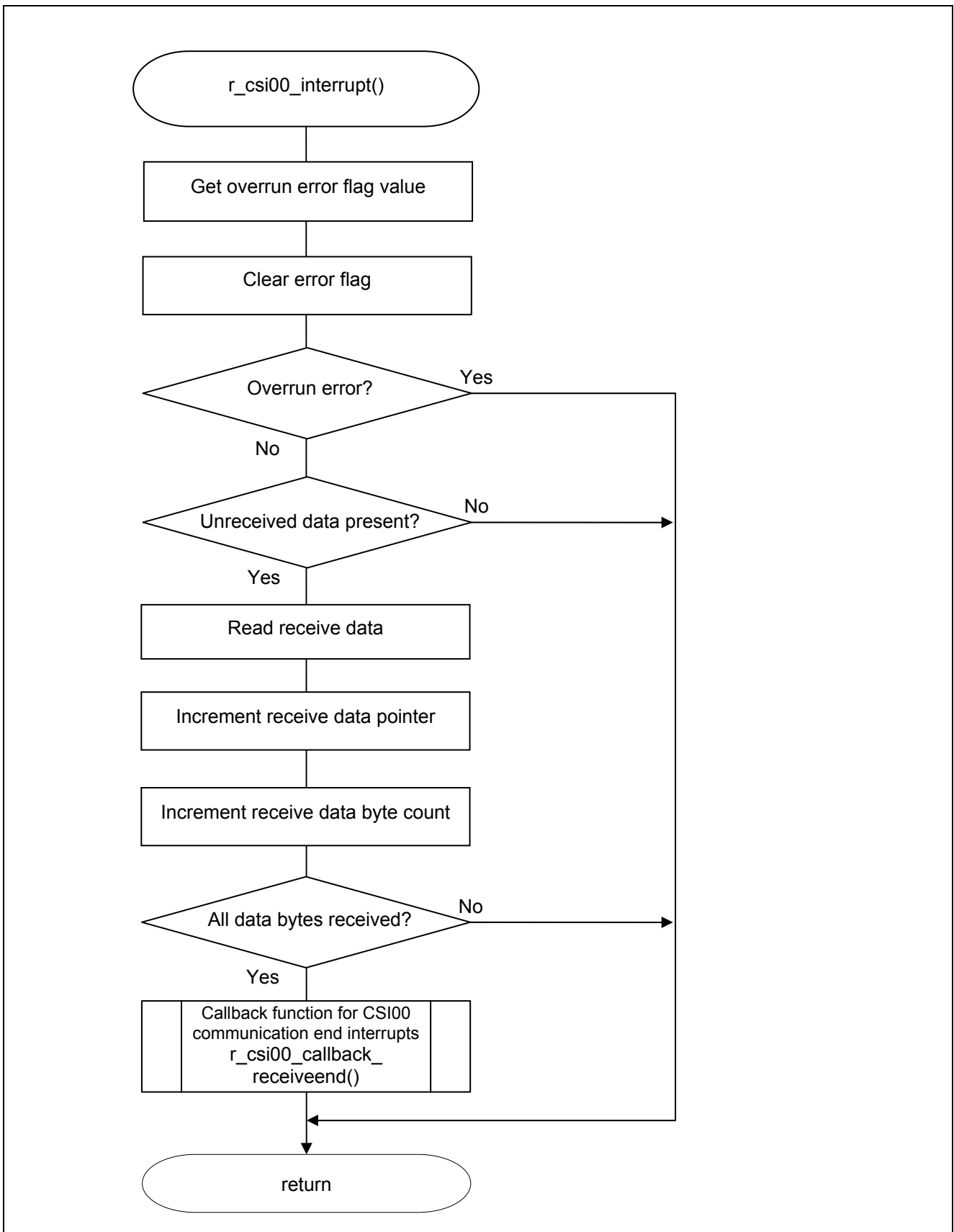


Figure 5.17 CSI00 Communication End Interrupt

5.8.16 Callback Function for CSI00 Communication End Interrupts

Figure 5.18 shows the flowchart for the callback function for CSI00 communication end interrupts.

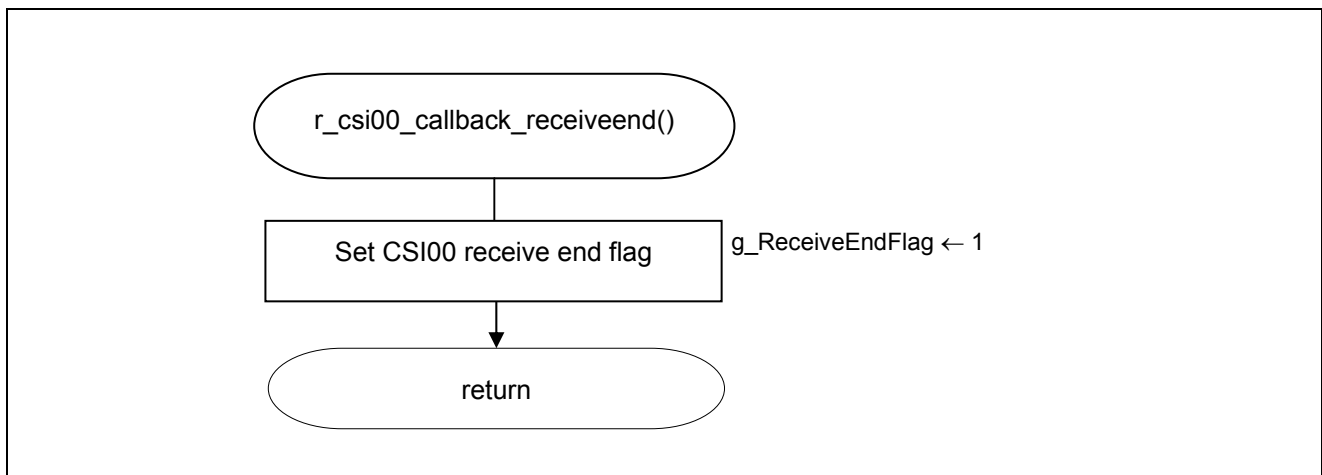


Figure 5.18 Callback Function for SI00 Communication End Interrupts

5.8.17 Getting Receive End Flag

Figure 5.19 shows the flowchart for getting the receive end flag. This function does nothing but returns global variable `g_ReceiveEndFlag` as a return value.



Figure 5.19 Getting the Receive End Flag

5.8.18 Clearing the Receive End Flag

Figure 5.20 shows the flowchart for clearing the receive end flag.

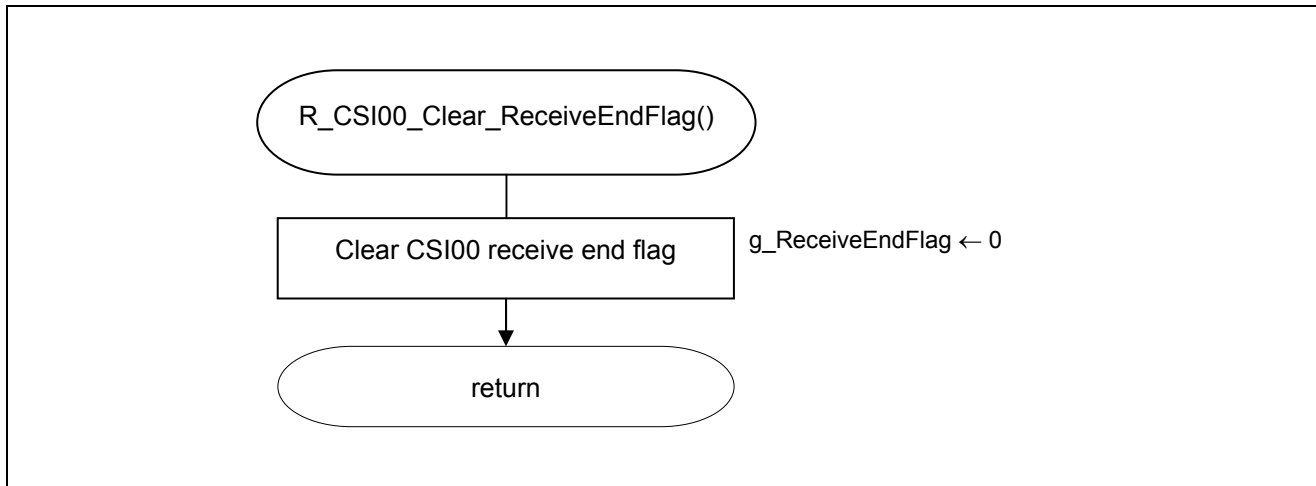


Figure 5.20 Clearing the Receive End Flag

5.8.19 Starting INTP0 Operation

Figure 5.21 shows the flowchart for starting INTP0 operation.

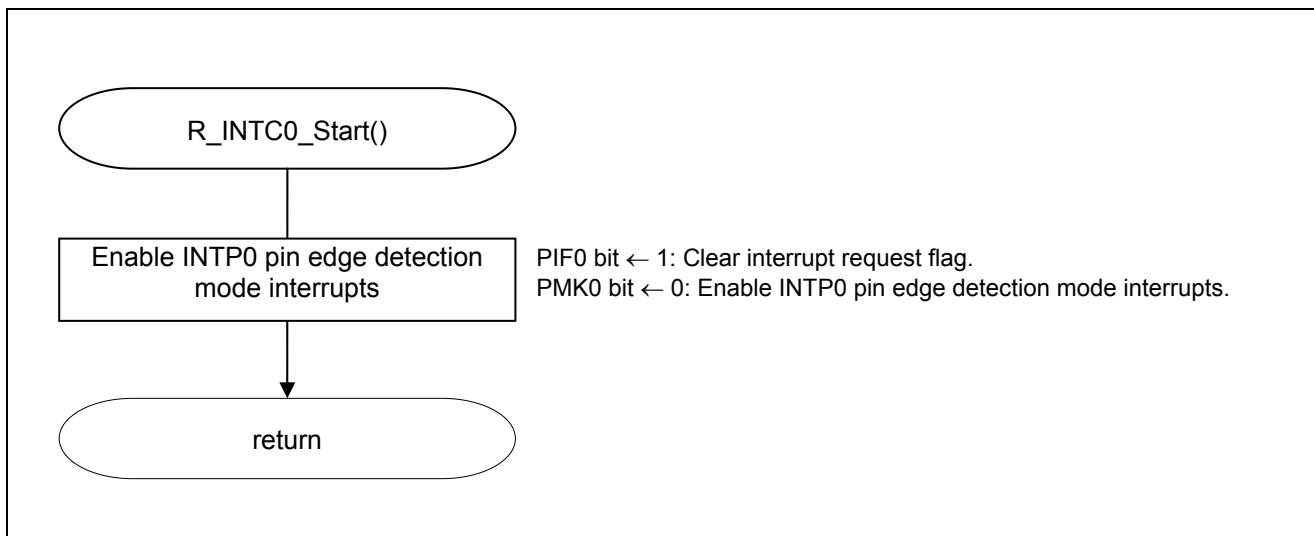


Figure 5.21 Starting INTP0 Operation

Setting up the INTP0 interrupt

- Interrupt request flag register (IF0L)
Clear interrupt request flag.
- Interrupt mask flag register (MK0L)
Clear interrupt mask.

Symbol: IF0L

7	6	5	4	3	2	1	0
PIF5	PIF4	PIF3	PIF2	PIF1	PIF0	LVIIF	WDTIIF
x	x	x	x	x	0	x	x

Bit 2

PIF0	Interrupt request flag
0	No interrupt request signal is generated
1	Interrupt request is generated, interrupt request status

Symbol: MK0L

7	6	5	4	3	2	1	0
PMK5	PMK4	PMK3	PMK2	PMK1	PMK0	LVIMK	WDTIMK
x	x	x	x	x	0	x	x

Bit 2

PMK0	Interrupt processing control
0	Interrupt processing enabled
1	Interrupt processing disabled

Caution: For details on the register setup procedures, refer to RL78/G13 User's Manual: Hardware.

5.8.20 Stopping INTP0

Figure 5.22 shows the flowchart for stopping INTP0.

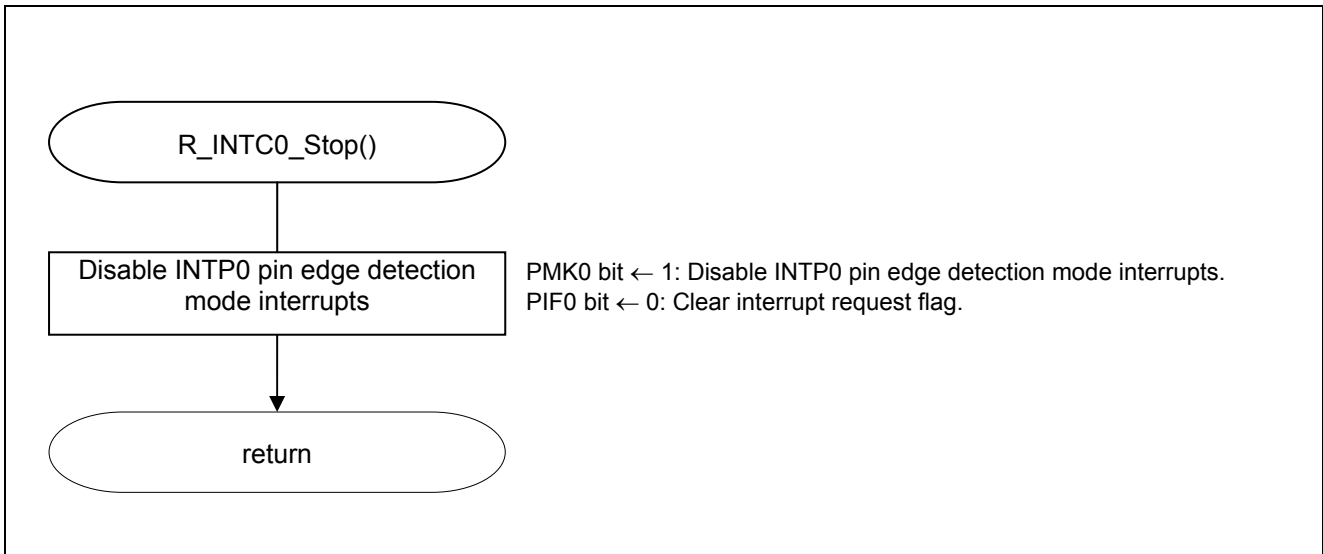


Figure 5.22 Stopping INTP0 Operation

5.8.21 INTP0 Interrupt

Figure 5.23 shows the flowchart for an INTP0 interrupt.

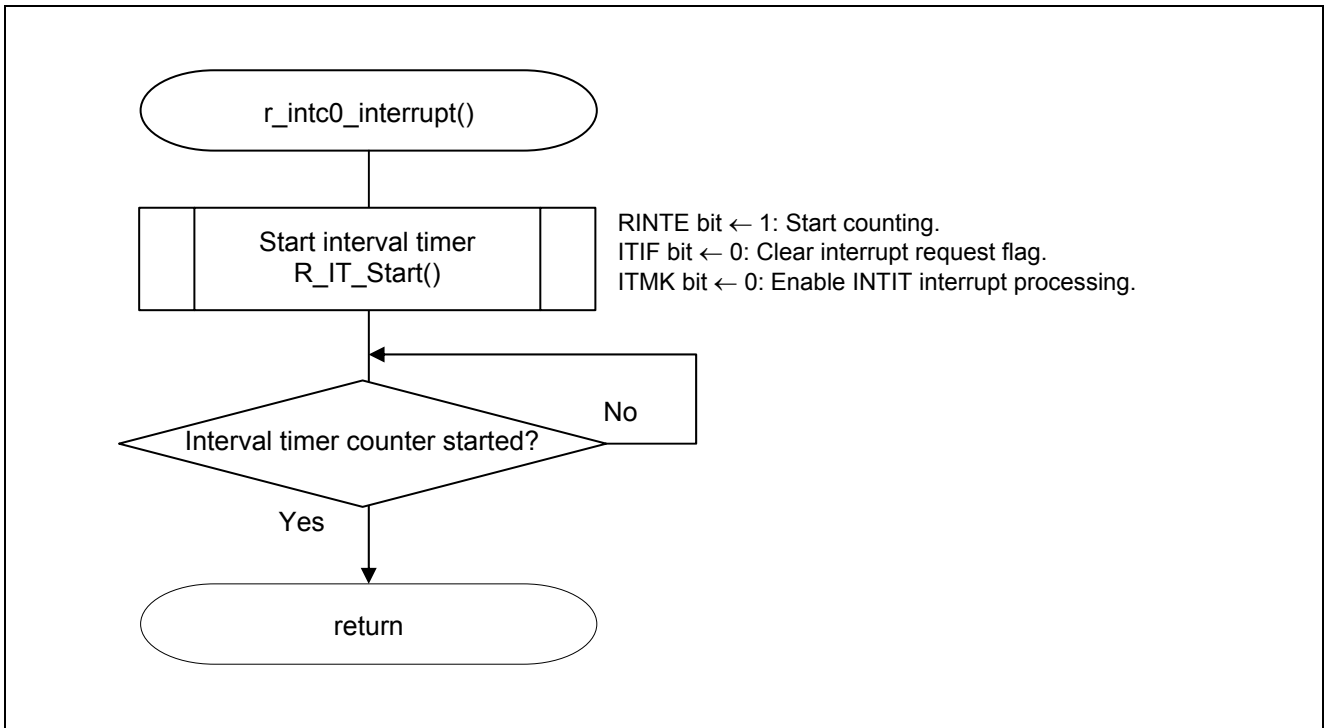


Figure 5.23 INTP0 Interrupt

5.8.22 Starting Interval Timer

Figure 5.24 shows the flowchart for starting the interval timer.

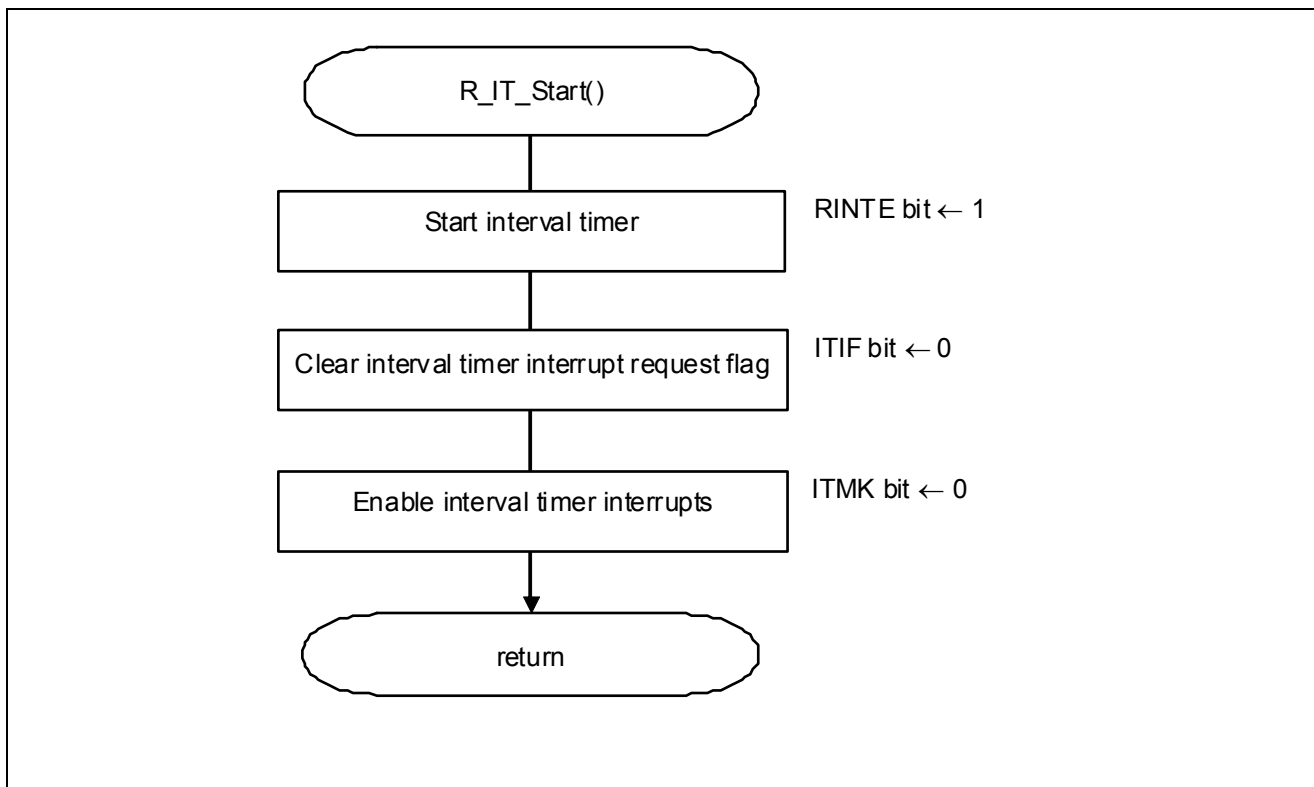


Figure 5.24 Starting Interval Timer

5.8.23 Stopping Interval Timer

Figure 5.25 shows the flowchart for stopping the interval timer.

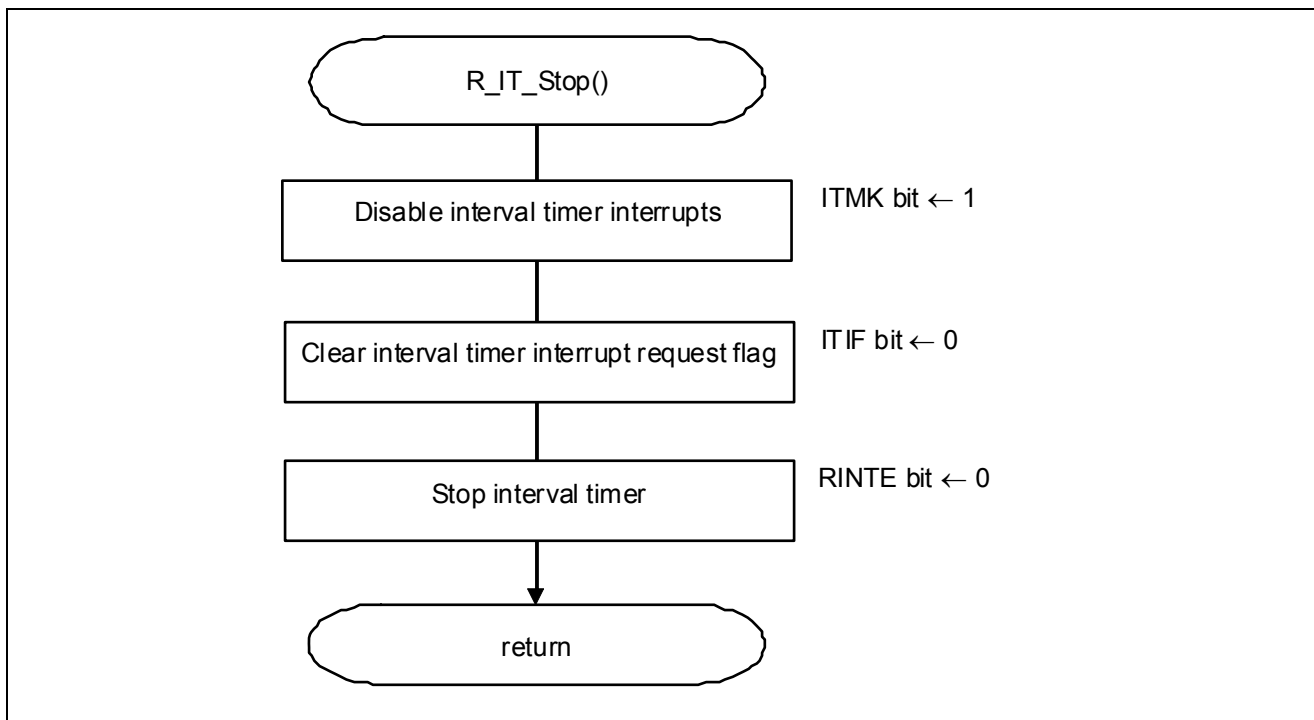


Figure 5.25 Stopping Interval Timer

5.8.24 Interval Timer Interrupt

Figure 5.26 shows the flowchart for an interval timer interrupt.

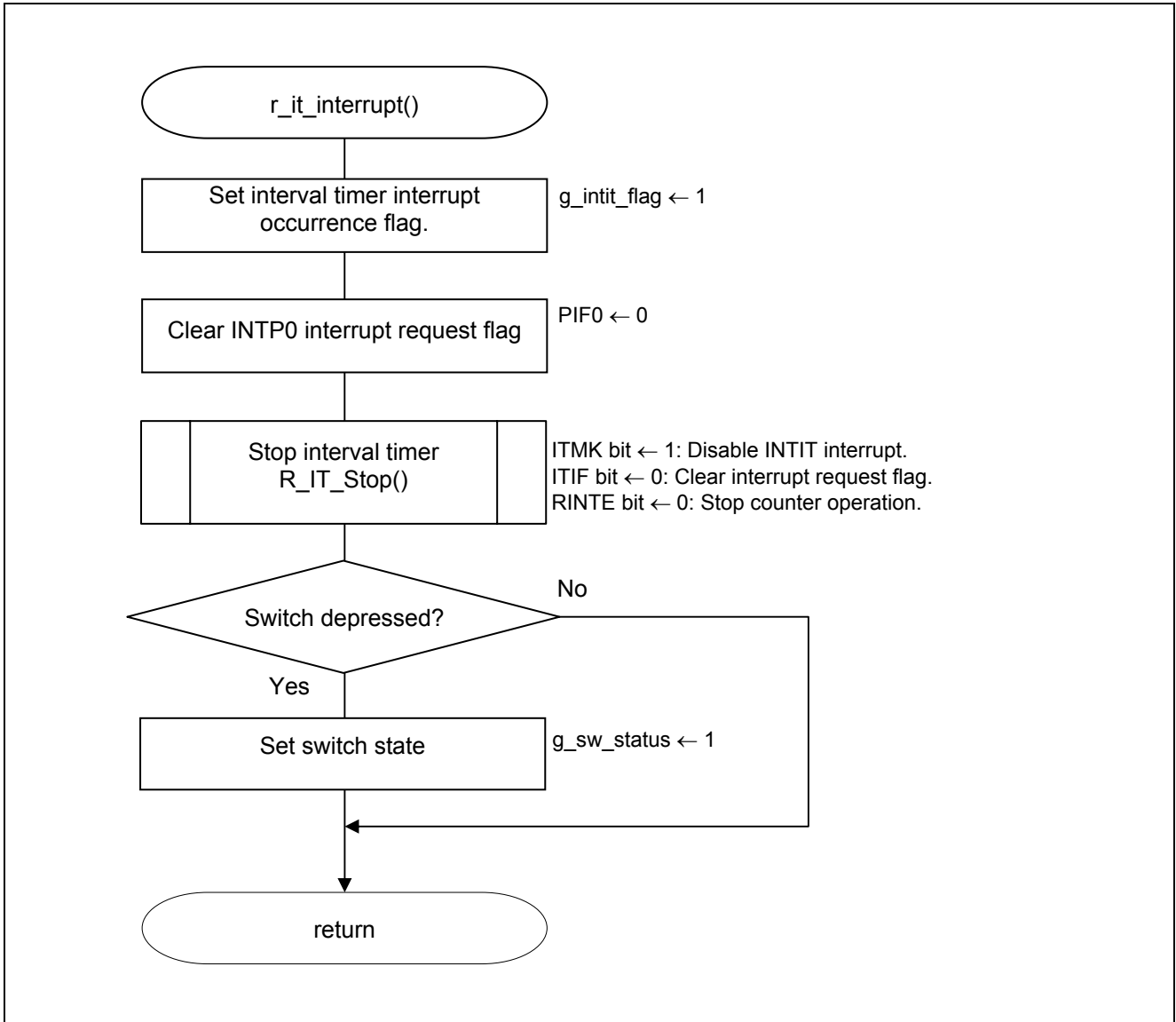


Figure 5.26 Interval Timer Interrupt

5.8.25 Getting the Switch State

Figure 5.27 shows the flowchart for getting the switch state. This function does nothing but returns global variable `g_sw_status` as a return value.

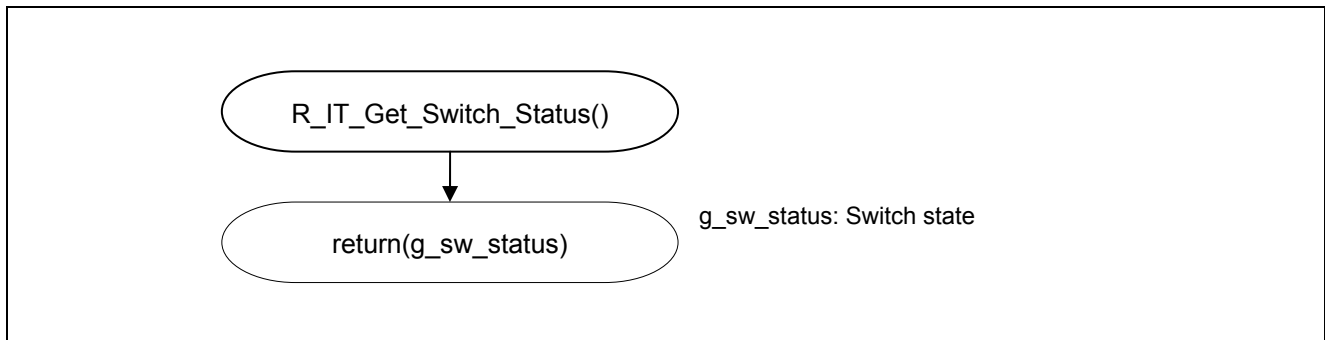


Figure 5.27 Getting the Switch State

5.8.26 Clearing the Switch State

Figure 5.28 shows the flowchart for clearing the switch state.

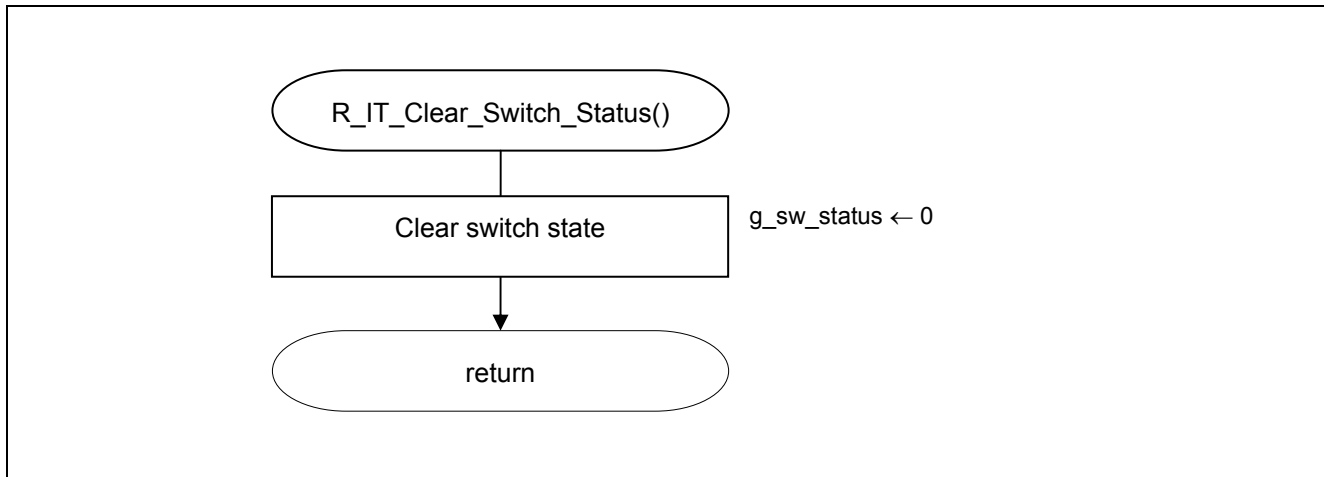


Figure 5.28 Clearing the Switch State

5.8.27 Getting the Interval Timer Interrupt Occurrence Flag

Figure 5.29 shows the flowchart for getting the interval timer interrupt occurrence flag. This function does nothing but returns global variable `g_intit_flag` as a return value.

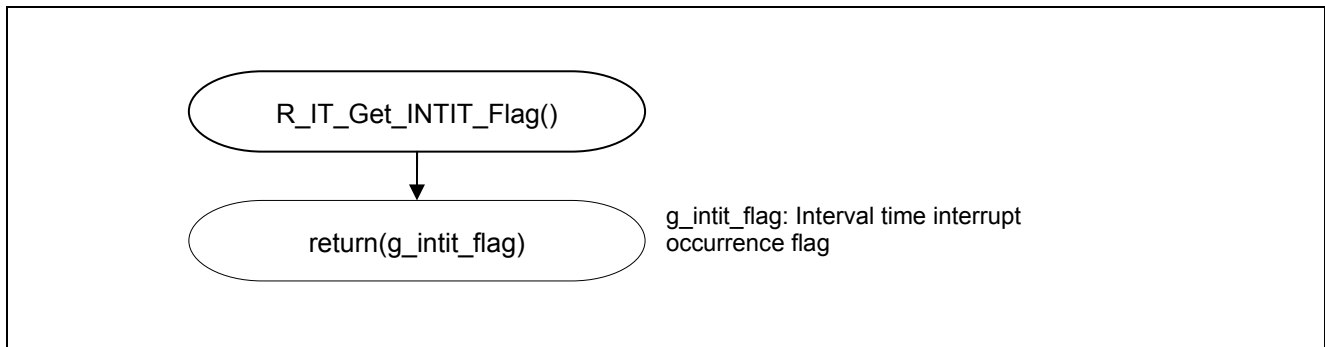


Figure 5.29 Getting the Interval Timer Interrupt Occurrence Flag

5.8.28 Clearing the Interval Timer Interrupt Occurrence Flag

Figure 5.30 shows the flowchart for clearing the interval timer interrupt occurrence flag.

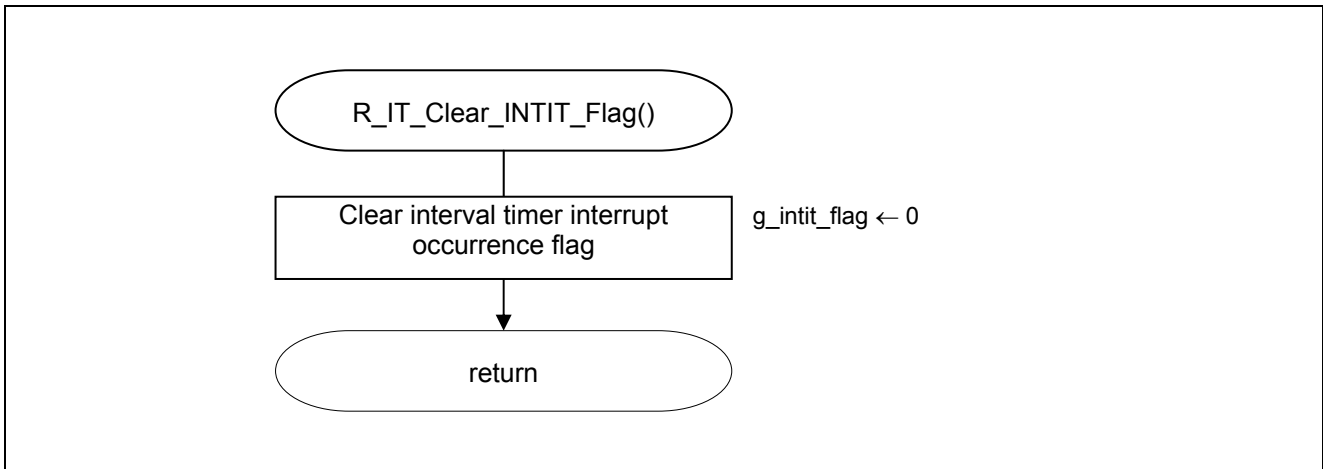


Figure 5.30 Clearing the Interval Timer Interrupt Occurrence Flag

6. Sample Code

The sample code is available on the Renesas Electronics Website.

7. Documents for Reference

RL78/G13 User's Manual: Hardware (R01UH0146E)

RL78 Family User's Manual: Software (R01US0015E)

(The latest versions of the documents are available on the Renesas Electronics Website.)

Technical Updates/Technical Brochures

(The latest versions of the documents are available on the Renesas Electronics Website.)

Website and Support

Renesas Electronics Website

- <http://www.renesas.com/index.jsp>

Inquiries

- <http://www.renesas.com/contact/>

Revision Record	RL78/G13 Low-power Consumption Operation (CSI in SNOOZE Mode)
-----------------	---

Rev.	Date	Description	
		Page	Summary
1.00	Apr. 16, 2015	—	First edition issued

All trademarks and registered trademarks are the property of their respective owners.

General Precautions in the Handling of MPU/MCU Products

The following usage notes are applicable to all MPU/MCU products from Renesas. For detailed usage notes on the products covered by this document, refer to the relevant sections of the document as well as any technical updates that have been issued for the products.

1. Handling of Unused Pins

Handle unused pins in accordance with the directions given under Handling of Unused Pins in the manual.

- The input pins of CMOS products are generally in the high-impedance state. In operation with an unused pin in the open-circuit state, extra electromagnetic noise is induced in the vicinity of LSI, an associated shoot-through current flows internally, and malfunctions occur due to the false recognition of the pin state as an input signal become possible. Unused pins should be handled as described under Handling of Unused Pins in the manual.

2. Processing at Power-on

The state of the product is undefined at the moment when power is supplied.

- The states of internal circuits in the LSI are indeterminate and the states of register settings and pins are undefined at the moment when power is supplied.

In a finished product where the reset signal is applied to the external reset pin, the states of pins are not guaranteed from the moment when power is supplied until the reset process is completed. In a similar way, the states of pins in a product that is reset by an on-chip power-on reset function are not guaranteed from the moment when power is supplied until the power reaches the level at which resetting has been specified.

3. Prohibition of Access to Reserved Addresses

Access to reserved addresses is prohibited.

- The reserved addresses are provided for the possible future expansion of functions. Do not access these addresses; the correct operation of LSI is not guaranteed if they are accessed.

4. Clock Signals

After applying a reset, only release the reset line after the operating clock signal has become stable. When switching the clock signal during program execution, wait until the target clock signal has stabilized.

- When the clock signal is generated with an external resonator (or from an external oscillator) during a reset, ensure that the reset line is only released after full stabilization of the clock signal. Moreover, when switching to a clock signal produced with an external resonator (or by an external oscillator) while program execution is in progress, wait until the target clock signal is stable.

5. Differences between Products

Before changing from one product to another, i.e. to a product with a different part number, confirm that the change will not lead to problems.

- The characteristics of an MPU or MCU in the same group but having a different part number may differ in terms of the internal memory capacity, layout pattern, and other factors, which can affect the ranges of electrical characteristics, such as characteristic values, operating margins, immunity to noise, and amount of radiated noise. When changing to a product with a different part number, implement a system-evaluation test for the given product.

Notice

1. Descriptions of circuits, software and other related information in this document are provided only to illustrate the operation of semiconductor products and application examples. You are fully responsible for the incorporation of these circuits, software, and information in the design of your equipment. Renesas Electronics assumes no responsibility for any losses incurred by you or third parties arising from the use of these circuits, software, or information.
2. Renesas Electronics has used reasonable care in preparing the information included in this document, but Renesas Electronics does not warrant that such information is error free. Renesas Electronics assumes no liability whatsoever for any damages incurred by you resulting from errors in or omissions from the information included herein.
3. Renesas Electronics does not assume any liability for infringement of patents, copyrights, or other intellectual property rights of third parties by or arising from the use of Renesas Electronics products or technical information described in this document. No license, express, implied or otherwise, is granted hereby under any patents, copyrights or other intellectual property rights of Renesas Electronics or others.
4. You should not alter, modify, copy, or otherwise misappropriate any Renesas Electronics product, whether in whole or in part. Renesas Electronics assumes no responsibility for any losses incurred by you or third parties arising from such alteration, modification, copy or otherwise misappropriation of Renesas Electronics product.
5. Renesas Electronics products are classified according to the following two quality grades: "Standard" and "High Quality". The recommended applications for each Renesas Electronics product depends on the product's quality grade, as indicated below.
"Standard": Computers; office equipment; communications equipment; test and measurement equipment; audio and visual equipment; home electronic appliances; machine tools; personal electronic equipment; and industrial robots etc.
"High Quality": Transportation equipment (automobiles, trains, ships, etc.); traffic control systems; anti-disaster systems; anti-crime systems; and safety equipment etc.
Renesas Electronics products are neither intended nor authorized for use in products or systems that may pose a direct threat to human life or bodily injury (artificial life support devices or systems, surgical implantations etc.), or may cause serious property damages (nuclear reactor control systems, military equipment etc.). You must check the quality grade of each Renesas Electronics product before using it in a particular application. You may not use any Renesas Electronics product for any application for which it is not intended. Renesas Electronics shall not be in any way liable for any damages or losses incurred by you or third parties arising from the use of any Renesas Electronics product for which the product is not intended by Renesas Electronics.
6. You should use the Renesas Electronics products described in this document within the range specified by Renesas Electronics, especially with respect to the maximum rating, operating supply voltage range, movement power voltage range, heat radiation characteristics, installation and other product characteristics. Renesas Electronics shall have no liability for malfunctions or damages arising out of the use of Renesas Electronics products beyond such specified ranges.
7. Although Renesas Electronics endeavors to improve the quality and reliability of its products, semiconductor products have specific characteristics such as the occurrence of failure at a certain rate and malfunctions under certain use conditions. Further, Renesas Electronics products are not subject to radiation resistance design. Please be sure to implement safety measures to guard them against the possibility of physical injury, and injury or damage caused by fire in the event of the failure of a Renesas Electronics product, such as safety design for hardware and software including but not limited to redundancy, fire control and malfunction prevention, appropriate treatment for aging degradation or any other appropriate measures. Because the evaluation of microcomputer software alone is very difficult, please evaluate the safety of the final products or systems manufactured by you.
8. Please contact a Renesas Electronics sales office for details as to environmental matters such as the environmental compatibility of each Renesas Electronics product. Please use Renesas Electronics products in compliance with all applicable laws and regulations that regulate the inclusion or use of controlled substances, including without limitation, the EU RoHS Directive. Renesas Electronics assumes no liability for damages or losses occurring as a result of your noncompliance with applicable laws and regulations.
9. Renesas Electronics products and technology may not be used for or incorporated into any products or systems whose manufacture, use, or sale is prohibited under any applicable domestic or foreign laws or regulations. You should not use Renesas Electronics products or technology described in this document for any purpose relating to military applications or use by the military, including but not limited to the development of weapons of mass destruction. When exporting the Renesas Electronics products or technology described in this document, you should comply with the applicable export control laws and regulations and follow the procedures required by such laws and regulations.
10. It is the responsibility of the buyer or distributor of Renesas Electronics products, who distributes, disposes of, or otherwise places the product with a third party, to notify such third party in advance of the contents and conditions set forth in this document, Renesas Electronics assumes no responsibility for any losses incurred by you or third parties as a result of unauthorized use of Renesas Electronics products.
11. This document may not be reproduced or duplicated in any form, in whole or in part, without prior written consent of Renesas Electronics.
12. Please contact a Renesas Electronics sales office if you have any questions regarding the information contained in this document or Renesas Electronics products, or if you have any other inquiries.

(Note 1) "Renesas Electronics" as used in this document means Renesas Electronics Corporation and also includes its majority-owned subsidiaries.

(Note 2) "Renesas Electronics product(s)" means any product developed or manufactured by or for Renesas Electronics.



SALES OFFICES

Renesas Electronics Corporation

<http://www.renesas.com>

Refer to "<http://www.renesas.com/>" for the latest and detailed information.

Renesas Electronics America Inc.
2801 Scott Boulevard Santa Clara, CA 95050-2549, U.S.A.
Tel: +1-408-588-6000, Fax: +1-408-588-6130

Renesas Electronics Canada Limited
9251 Yonge Street, Suite 8309 Richmond Hill, Ontario Canada L4C 9T3
Tel: +1-905-237-2004

Renesas Electronics Europe Limited
Dukes Meadow, Millboard Road, Bourne End, Buckinghamshire, SL8 5FH, U.K
Tel: +44-1628-585-100, Fax: +44-1628-585-900

Renesas Electronics Europe GmbH
Arcadiastrasse 10, 40472 Düsseldorf, Germany
Tel: +49-211-6503-0, Fax: +49-211-6503-1327

Renesas Electronics (China) Co., Ltd.
Room 1709, Quantum Plaza, No.27 ZhichunLu Haidian District, Beijing 100191, P.R.China
Tel: +86-10-8235-1155, Fax: +86-10-8235-7679

Renesas Electronics (Shanghai) Co., Ltd.
Unit 301, Tower A, Central Towers, 555 Langao Road, Putuo District, Shanghai, P. R. China 200333
Tel: +86-21-2226-0888, Fax: +86-21-2226-0899

Renesas Electronics Hong Kong Limited
Unit 1601-1611, 16/F., Tower 2, Grand Century Place, 193 Prince Edward Road West, Mongkok, Kowloon, Hong Kong
Tel: +852-2265-8688, Fax: +852-2886-9022

Renesas Electronics Taiwan Co., Ltd.
13F, No. 363, Fu Shing North Road, Taipei 10543, Taiwan
Tel: +886-2-8175-9600, Fax: +886-2-8175-9670

Renesas Electronics Singapore Pte. Ltd.
80 Bendemeer Road, Unit #06-02 Hyflux Innovation Centre, Singapore 339949
Tel: +65-6213-0200, Fax: +65-6213-0300

Renesas Electronics Malaysia Sdn.Bhd.
Unit 1207, Block B, Menara Amcorp, Amcorp Trade Centre, No. 18, Jin Persiaran Barat, 46050 Petaling Jaya, Selangor Darul Ehsan, Malaysia
Tel: +60-3-7955-9390, Fax: +60-3-7955-9510

Renesas Electronics India Pvt. Ltd.
No.777C, 100 Feet Road, HAL II Stage, Indiranagar, Bangalore, India
Tel: +91-80-67208700, Fax: +91-80-67208777

Renesas Electronics Korea Co., Ltd.
12F., 234 Teheran-ro, Gangnam-Gu, Seoul, 135-080, Korea
Tel: +82-2-558-3737, Fax: +82-2-558-5141