

ClockMatrix

Programming the 24FC1025 EEPROM with the Total Phase EEPROM Board

Abstract

This document explains how to program the 24FC1025 EEPROM for use with Renesas 8A340xx devices. The procedure describes how to use the Total Phase Aardvark card, an EEPROM board, and a loose EEPROM. However, the same process can be used by connecting the Aardvark card directly to header interface wired to an EEPROM mounted on a PCB board.

Contents

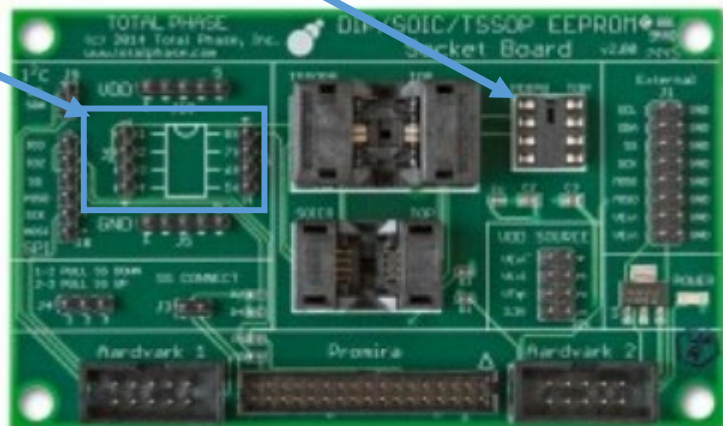
1. Hardware/Software Setup	1
2. Total Phase EEPROM Board Setup.....	1
3. Software.....	2
4. Revision History	8

1. Hardware/Software Setup

- Hardware: <https://www.totalphase.com/products/eeprom-devkit/>
- EEPROM Device: <https://www.digikey.com/product-detail/en/microchip-technology/24FC1025-I-P/24FC1025-I-P-ND/957537>
- Software: <https://www.totalphase.com/products/flash-center/>

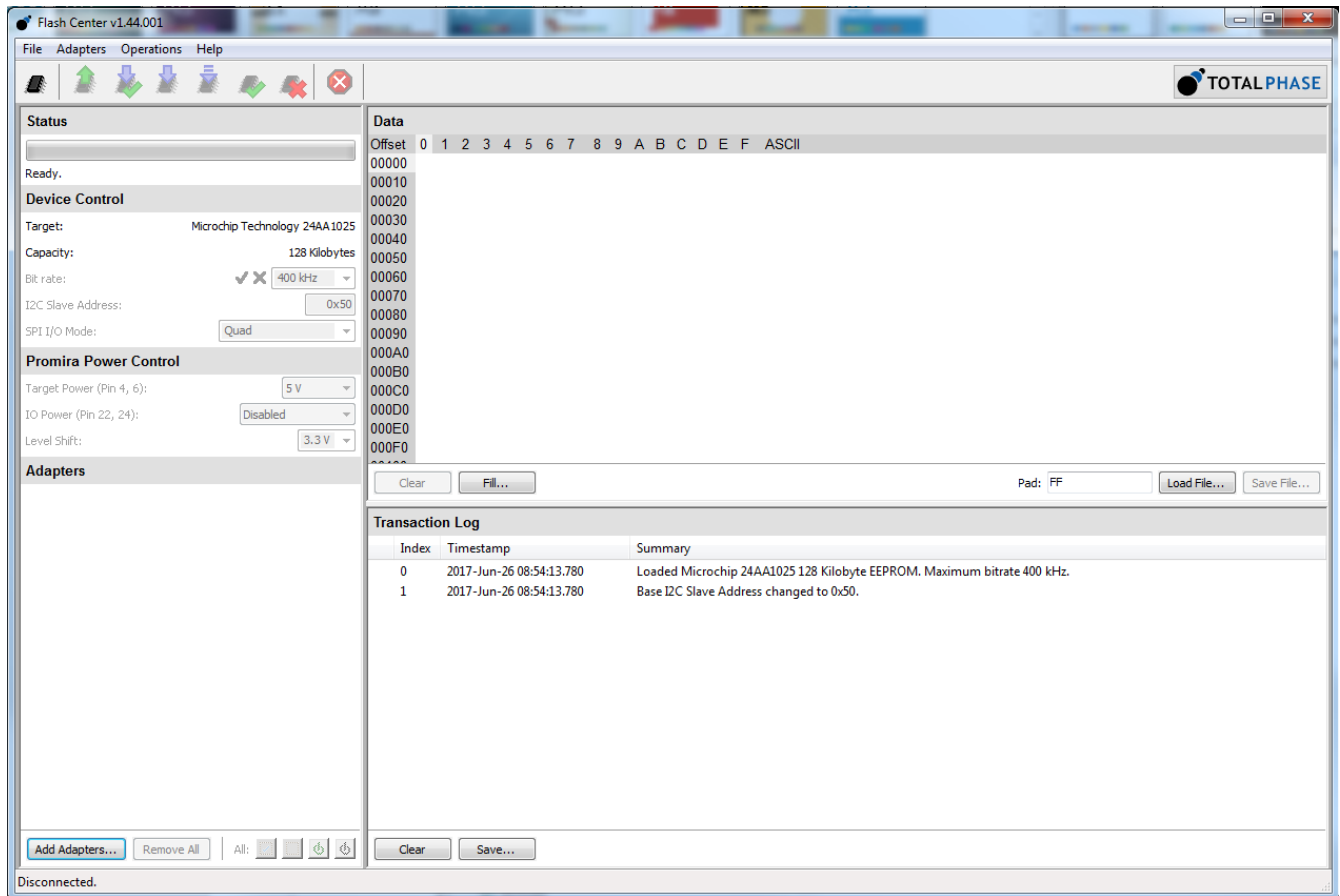
2. Total Phase EEPROM Board Setup

- Place EEPROM in PDIP8 Socket
- J4 place jumper on position 1-2
- J3 populate jumper
- VDD Source: set jumper to 3.3V
- Wire J6 as follows:
 - Pin 1 = Open
 - Pin 2 = Open
 - **Pin 3 = VDD**
 - Pin 4 = GND
 - Pin 5 = SDA
 - Pin 6 = SCLK
 - Pin 7 = GND
 - Pin 8 = VDD

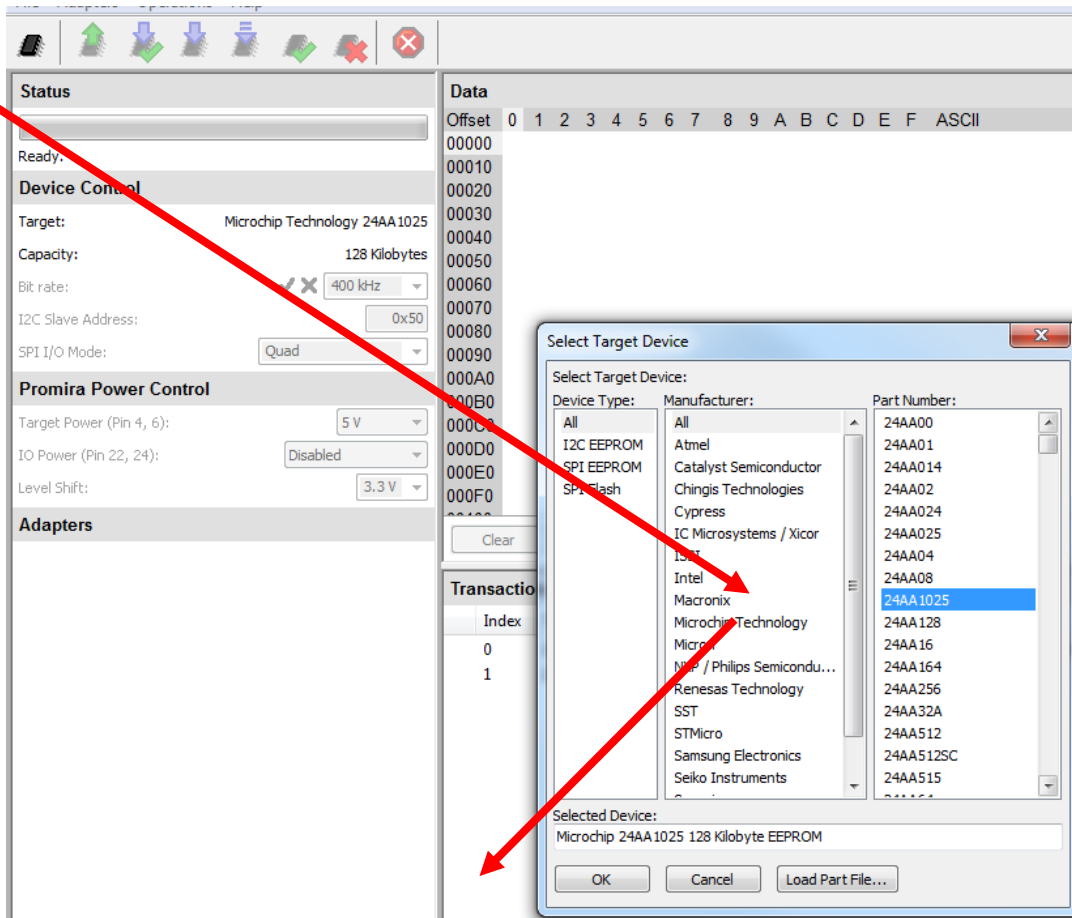


3. Software

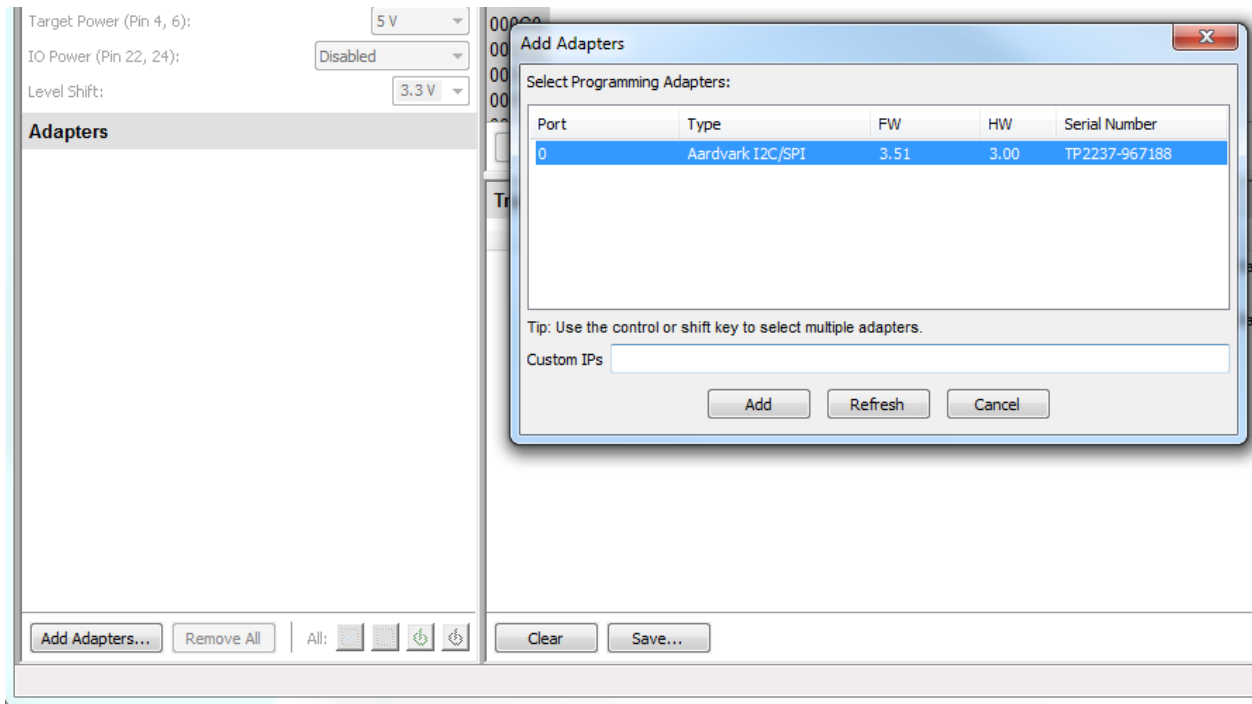
1. Start up the Flash Center GUI.



2. Select device 24AA1025 and press "OK".



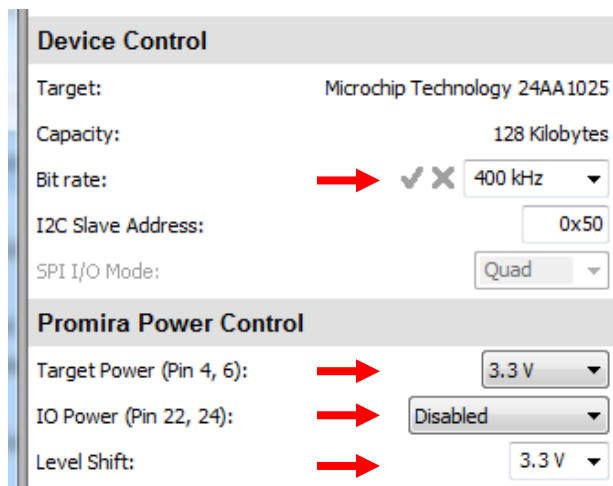
3. Press “Add Adapters”.
4. Select the Adapter.
5. Press “Add”.



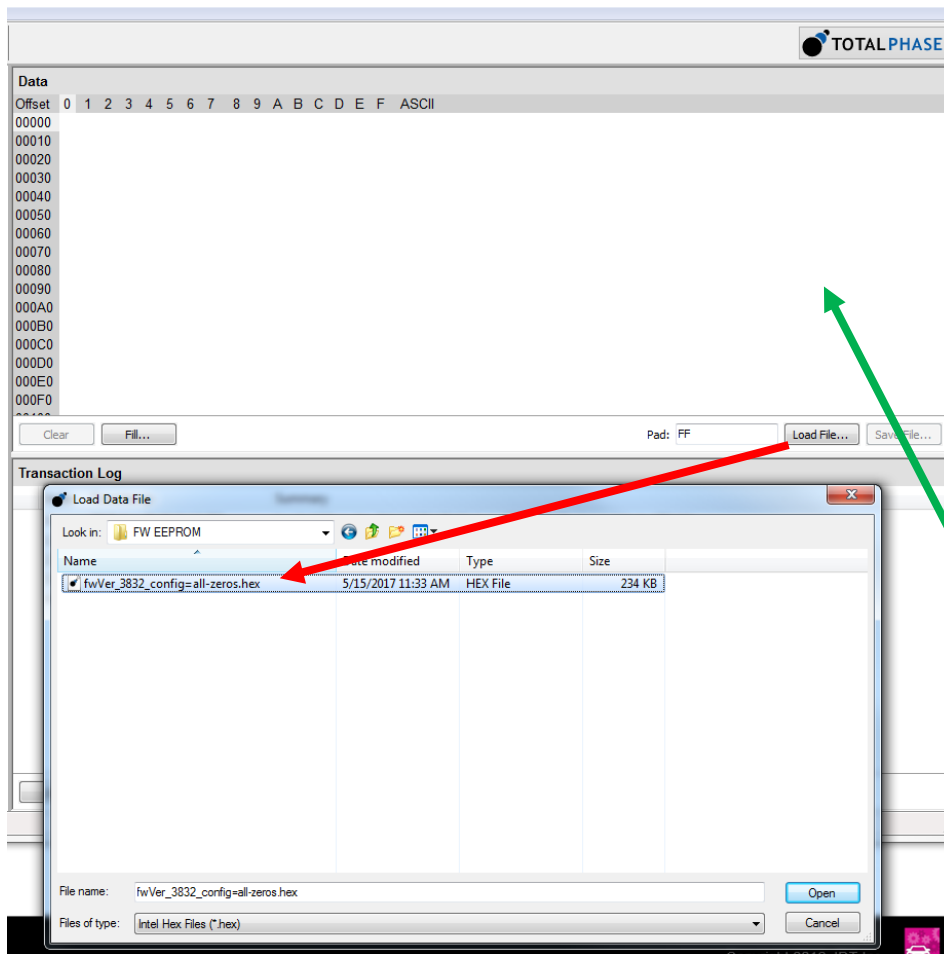
The transaction log should reflect the update: →

Index	Timestamp	Summary
0	2017-Jun-26 08:54:13.780	Loaded Microchip 24AA1025 128 Kilobyte EEPROM. Maximum bitrate 400 kHz.
1	2017-Jun-26 08:54:13.780	Base I2C Slave Address changed to 0x50.
2	2017-Jun-26 08:56:35.420	Loaded Microchip 24AA1025 128 Kilobyte EEPROM. Maximum bitrate 400 kHz.
3	2017-Jun-26 08:58:54.948	Connected to Aardvark I2C/SPI at index 1 TP2237-967188 (USB 1.1).
4	2017-Jun-26 08:58:54.974	Supported Features: I2C, SPI(Standard)

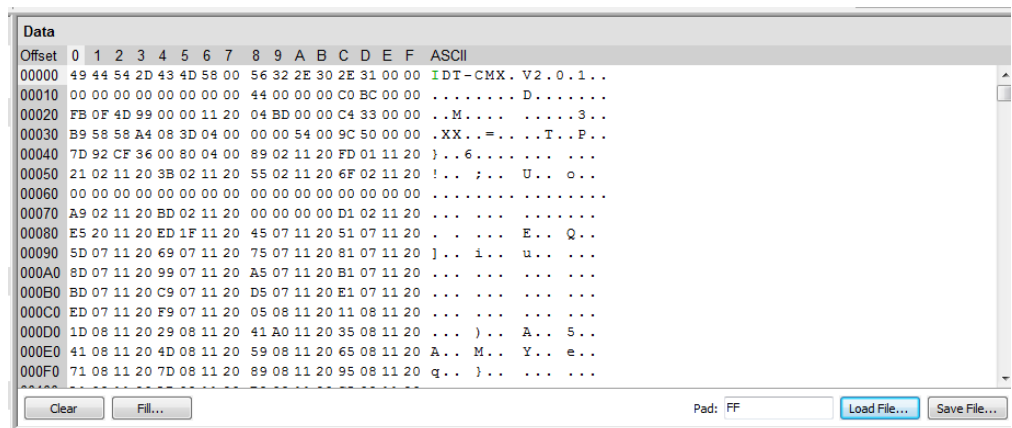
6. Set “Bit rate” = 400kHz.
7. Set “Target Power” = 3.3V.
8. Set “IO Power” = Disabled.
9. Set “Level Shift” = 3.3V.



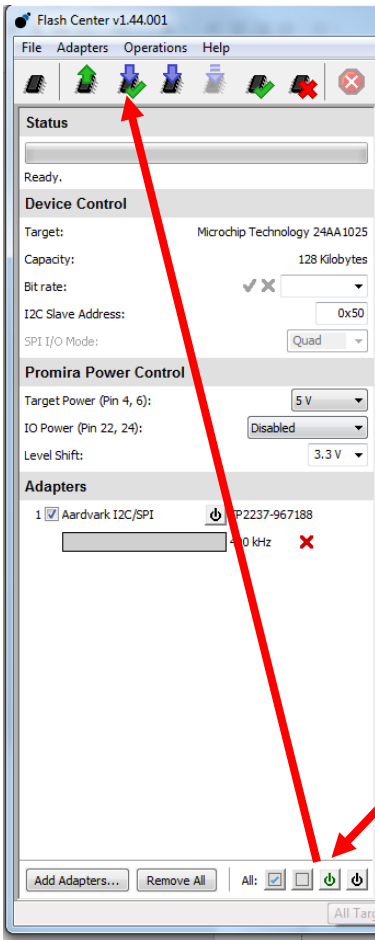
10. Press “Load File”, browse and locate the EEPROM hex image, then press “Open”.



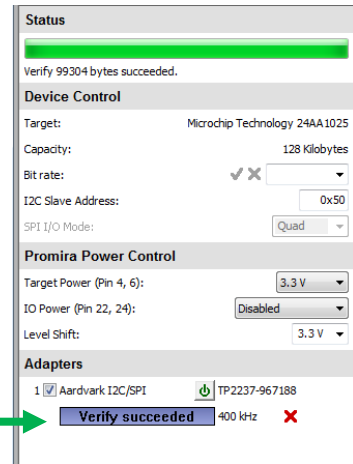
The “Data” field should now be populated.



11. Press the “Power On” button and then “Program and Verify”.

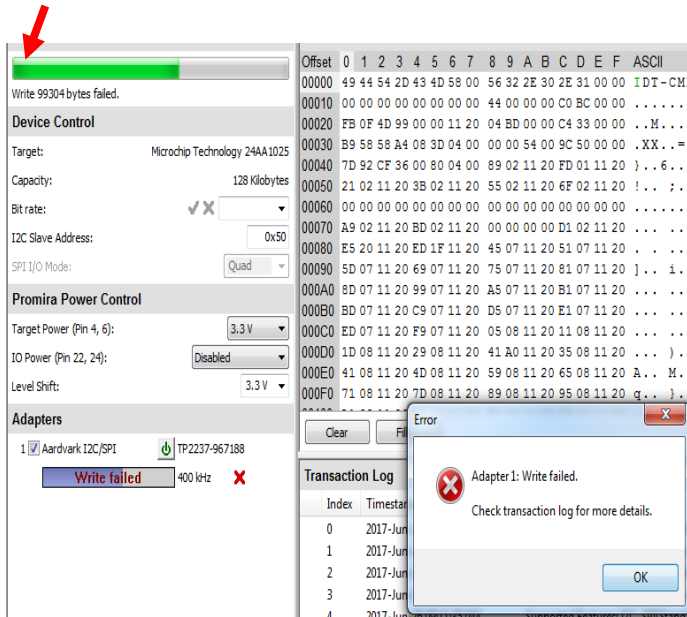


A successful write will result in the “Verify succeeded” message.

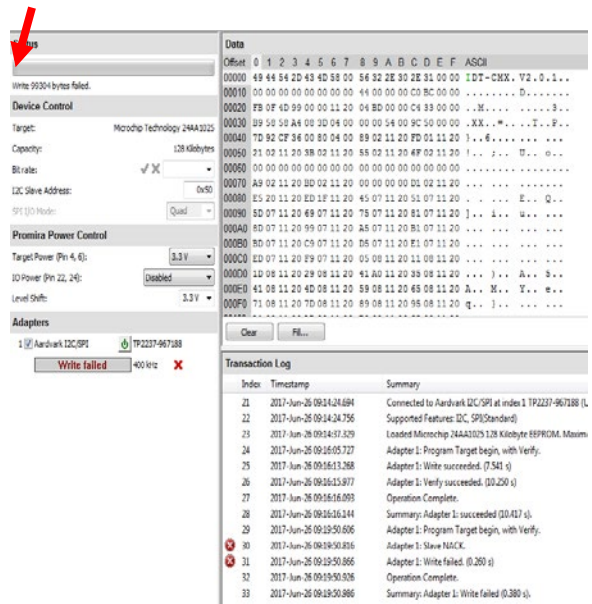


Often an “Adapter Write failed” message will appear.

If a partial write was successful, then attempt the programming again.



If none of the write was successful after a few attempts, then check the setup.



“Adapter Write failed” message.

If repeated attempts to program the device still fail, then set the <writeTime> parameter in your microchip_i2c_eeprom.xml XML file (located in the “flash-center-windows-i686-v1.43\parts” directory) to 10000 or greater as shown below:

```
<writeTime>10000 </writeTime>
```

```
<device version="1.0">
  <deviceName> 24AA1025 </deviceName>
  <deviceDescription>
    Microchip 24AA1025 128 Kilobyte EEPROM
  </deviceDescription>
  <capacity> 128*1024 </capacity>
  <writeSize> 128 </writeSize>
  <writeTime>10000 </writeTime>
  <pageShift> 2 </pageShift>
</device>
```

4. Revision History

Revision	Date	Description
1.0	Dec.16.20	Initial release.

IMPORTANT NOTICE AND DISCLAIMER

RENESAS ELECTRONICS CORPORATION AND ITS SUBSIDIARIES (“RENESAS”) PROVIDES TECHNICAL SPECIFICATIONS AND RELIABILITY DATA (INCLUDING DATASHEETS), DESIGN RESOURCES (INCLUDING REFERENCE DESIGNS), APPLICATION OR OTHER DESIGN ADVICE, WEB TOOLS, SAFETY INFORMATION, AND OTHER RESOURCES “AS IS” AND WITH ALL FAULTS, AND DISCLAIMS ALL WARRANTIES, EXPRESS OR IMPLIED, INCLUDING, WITHOUT LIMITATION, ANY IMPLIED WARRANTIES OF MERCHANTABILITY, FITNESS FOR A PARTICULAR PURPOSE, OR NON-INFRINGEMENT OF THIRD PARTY INTELLECTUAL PROPERTY RIGHTS.

These resources are intended for developers skilled in the art designing with Renesas products. You are solely responsible for (1) selecting the appropriate products for your application, (2) designing, validating, and testing your application, and (3) ensuring your application meets applicable standards, and any other safety, security, or other requirements. These resources are subject to change without notice. Renesas grants you permission to use these resources only for development of an application that uses Renesas products. Other reproduction or use of these resources is strictly prohibited. No license is granted to any other Renesas intellectual property or to any third party intellectual property. Renesas disclaims responsibility for, and you will fully indemnify Renesas and its representatives against, any claims, damages, costs, losses, or liabilities arising out of your use of these resources. Renesas' products are provided only subject to Renesas' Terms and Conditions of Sale or other applicable terms agreed to in writing. No use of any Renesas resources expands or otherwise alters any applicable warranties or warranty disclaimers for these products.

(Rev.1.0 Mar 2020)

Corporate Headquarters

TOYOSU FORESIA, 3-2-24 Toyosu,
Koto-ku, Tokyo 135-0061, Japan
www.renesas.com

Contact Information

For further information on a product, technology, the most up-to-date version of a document, or your nearest sales office, please visit:
www.renesas.com/contact/

Trademarks

Renesas and the Renesas logo are trademarks of Renesas Electronics Corporation. All trademarks and registered trademarks are the property of their respective owners.